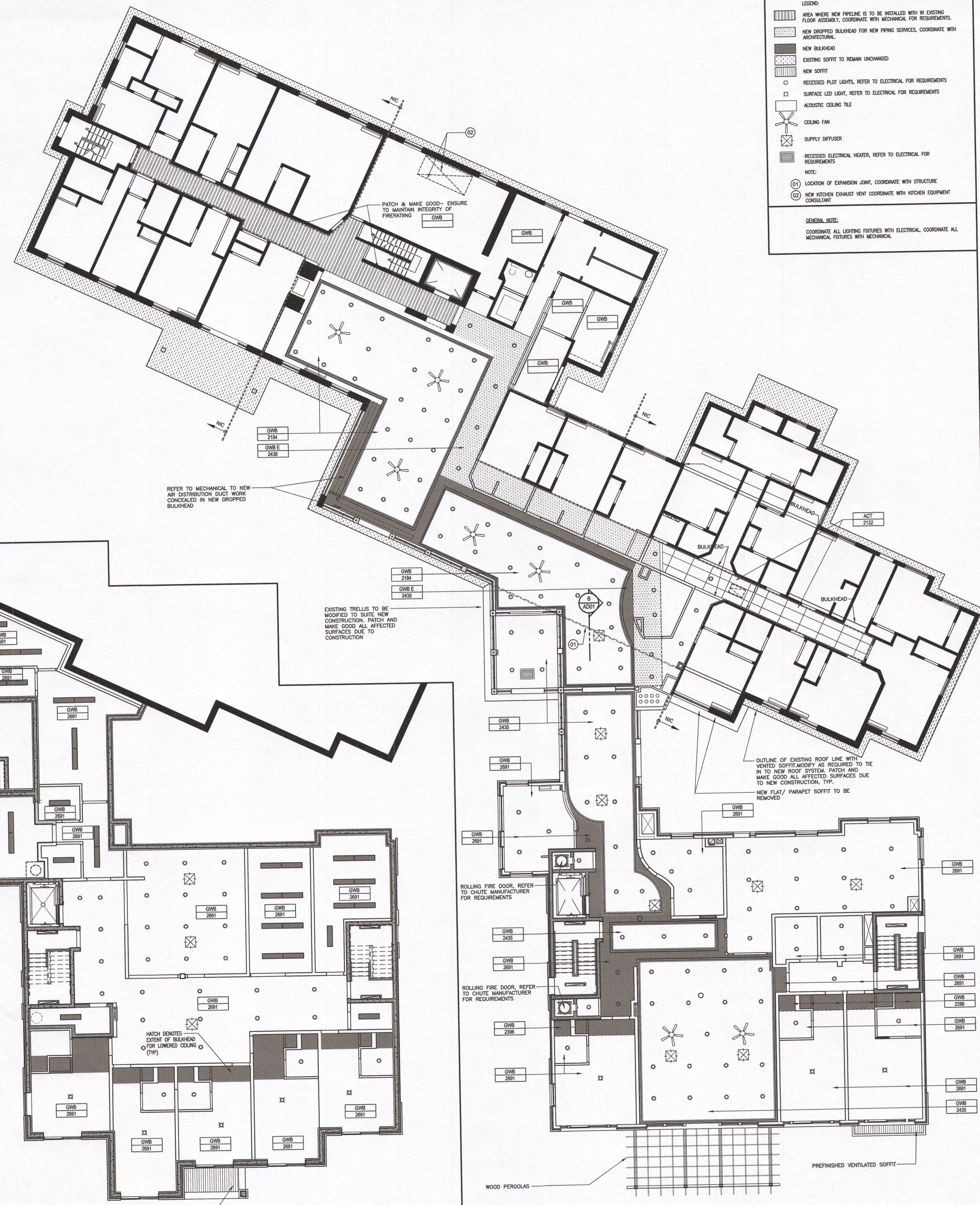
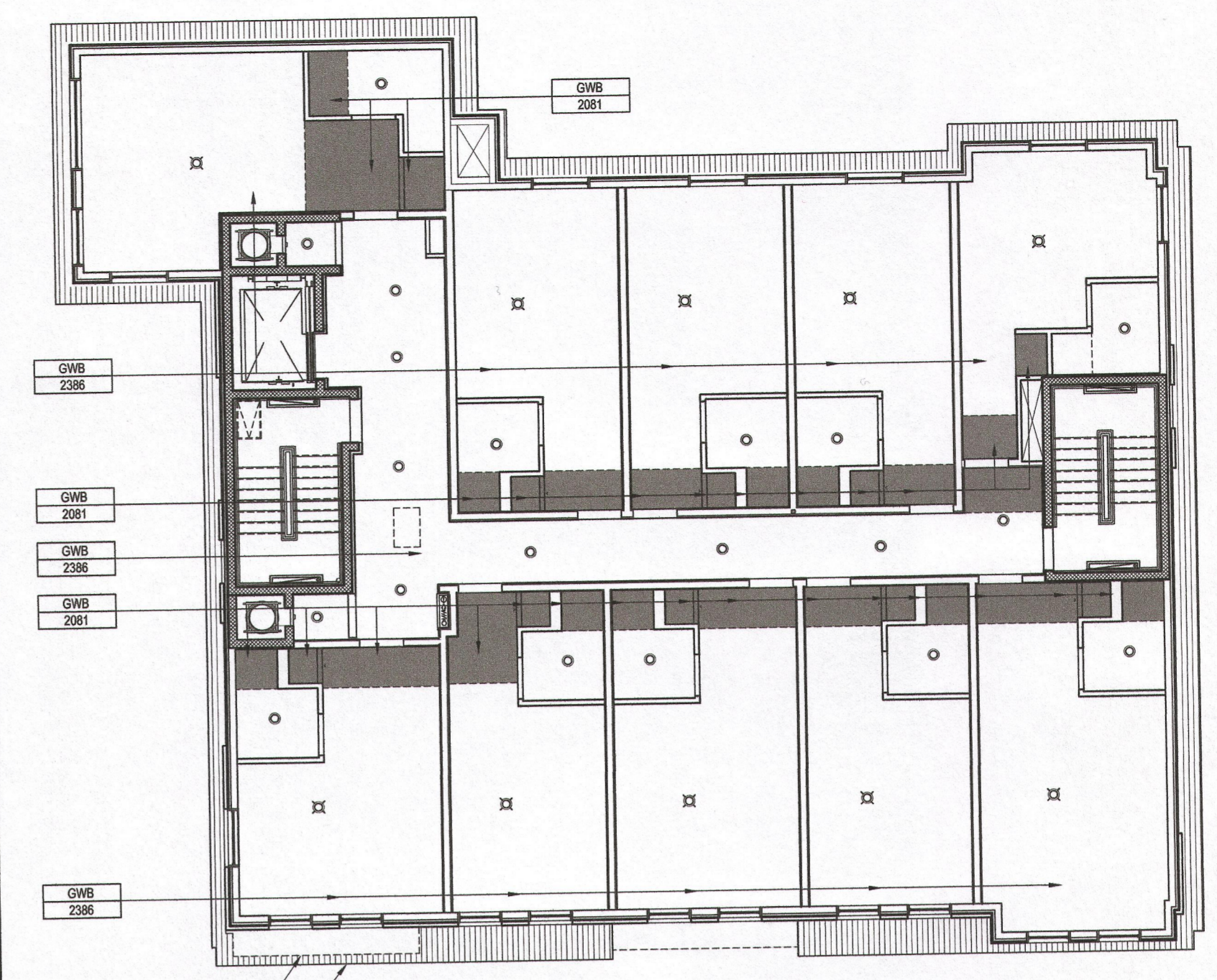


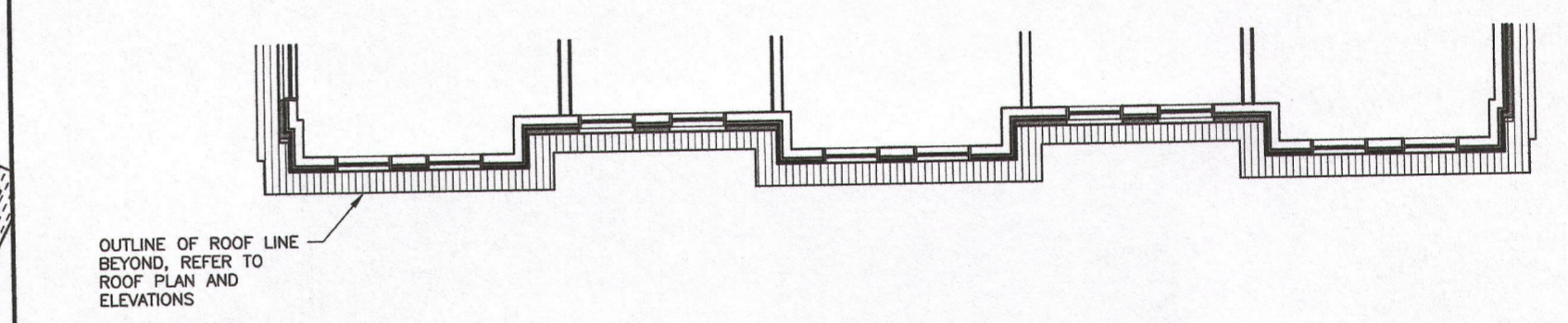
- LEGEND:
- AREA WHERE NEW PIPELINE IS TO BE INSTALLED WITH IN EXISTING FLOOR ASSEMBLY, COORDINATE WITH MECHANICAL FOR REQUIREMENTS
 - NEW DROPPED BULKHEAD FOR NEW PIPING SERVICES, COORDINATE WITH ARCHITECTURAL
 - NEW BULKHEAD
 - EXISTING SOFFIT TO REMAIN UNCHANGED
 - NEW SOFFIT
 - RECESSED PLOT LIGHTS, REFER TO ELECTRICAL FOR REQUIREMENTS
 - SURFACE LED LIGHT, REFER TO ELECTRICAL FOR REQUIREMENTS
 - ACOUSTIC CEILING TILE
 - CEILING FAN
 - SUPPLY DIFFUSER
 - RECESSED ELECTRICAL HEATER, REFER TO ELECTRICAL FOR REQUIREMENTS
- NOTE:
- (01) LOCATION OF EXPANSION JOINT, COORDINATE WITH STRUCTURE
 - (02) NEW KITCHEN EXHAUST VENT COORDINATE WITH KITCHEN EQUIPMENT CONSULTANT
- GENERAL NOTE:
COORDINATE ALL LIGHTING FEATURES WITH ELECTRICAL, COORDINATE ALL MECHANICAL FEATURES WITH MECHANICAL



2 GROUND LEVEL REFLECTED CEILING PLAN SCALE=1:100



3 SECOND LEVEL REFLECTED CEILING PLAN (TYPICAL FLOOR NEW) SCALE=1:100



4 PARTIAL FOURTH LEVEL REFLECTED CEILING PLAN SCALE=1:100

1 LOWER LEVEL REFLECTED CEILING PLAN SCALE=1:100

ALL CONTRACTORS TO VERIFY ALL DIMENSIONS ON SITE AND TO REPORT ALL ERRORS AND/OR OMISSIONS TO THE ARCHITECT.
ALL CONTRACTORS MUST COMPLY WITH ALL CODES AND BYLAWS AND OTHER AUTHORITIES HAVING JURISDICTION OVER THE WORK.
DO NOT SCALE DRAWINGS.
THIS DRAWING MAY NOT BE USED FOR CONSTRUCTION UNTIL SIGNED BY THE ARCHITECT.
COPYRIGHT RESERVED.

19		
18		
17		
16		
15		
14		
13		
12		
11		
10		
09	ISSUED FOR FINAL COORDINATION	13/11/15
08	ISSUED FOR COST CONSULTANT REVIEW	14/09/15
07	ISSUED FOR TENDER	05/08/15
06	ISSUED FOR COORDINATION	04/08/15
05	ISSUED FOR REVIEW/COORDINATION	25/03/15
04	ISSUED FOR COORDINATION	02/12/15
03	ISSUED FOR BUILDING PERMIT	12/23/14
02	ISSUED FOR COORDINATION	12/09/14
01	ISSUED FOR COORDINATION	11/28/14
NO.	REVISION	MM/DD/YYYY DATE

WOODMAN ARCHITECT
ARCHITECTS

4 BEECHWOOD, SUITE 201, OTTAWA, ONTARIO, CANADA K1L 8L9
TEL: 613 228 9850 FAX: 613 228 9848 mailbox@woodmanarchitect.com

CONSULTANTS:
STRUCTURAL - WSP
MECHANICAL - BGA
ELECTRICAL - BGA

PROJECT
**LONG SAULT VILLA
PROPOSED
NEW LINKED BUILDING**

DRAWING:
**REFLECTED
CEILING PLAN**

DATE	DECEMBER 23 2014	JOB NO.	1428
SCALE	1:50	DRAWING NO.	
DRAWN BY	S.S.		AP.10
REVIEWED BY			