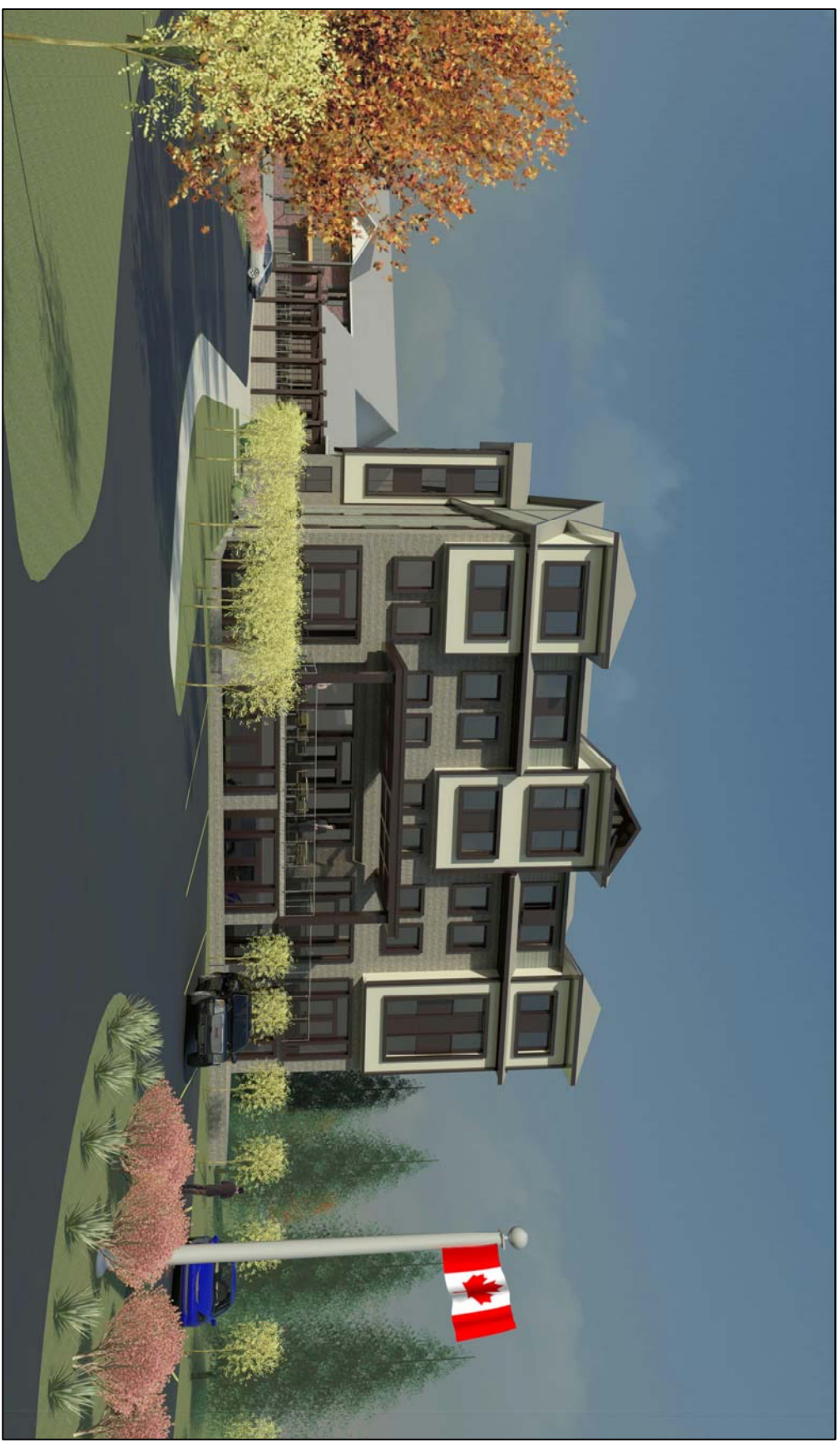
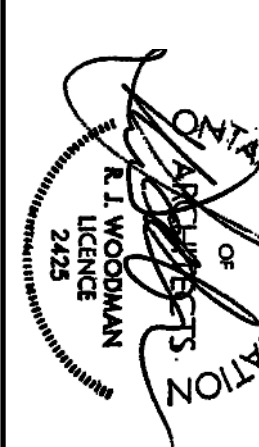


- MATERIALS LEGEND**
- ARCHITECTURAL CONCRETE
  - RE-FINISHED METAL FLASHING
  - ASPHALT SINGLES
  - ARCHITECTURAL PANEL
  - BRICK, TYPE/COLOUR
  - CEMENT RENDERING
  - FIRE CEMENT BOARD, TYPE/COLOUR
  - RINSED GROUT
  - FIRE CEMENT SAW BOARD, TYPE/COLOUR
  - RE-FINISHED METAL FLASHING
  - RE-FINISHED METAL ROOFING
  - PRE-FINISHED METAL VENTED SOFFIT
  - PRECAST CONCRETE, TYPE
  - REBAR - SIZE - LAP/SPICE WHERE SPEC - SEE DETAIL NOTES
  - REBAR - SIZE - LAP/SPICE WHERE SPEC - SEE DETAIL NOTES
  - REBAR - SIZE - LAP/SPICE WHERE SPEC - SEE DETAIL NOTES



ALL CONTRACTORS TO VERIFY ALL DIMENSIONS ON SITE AND TO REPORT ALL ERRORS AND/OR OMISSIONS TO THE ARCHITECT.  
 ALL CONTRACTORS MUST COMPLY WITH ALL CODES AND STANDARDS AND OTHER AUTHORITIES HAVING JURISDICTION OVER THE WORK.  
 DO NOT SCALE DRAWINGS.  
 THIS DRAWING MAY NOT BE USED FOR CONSTRUCTION UNLESS SIGNED BY THE ARCHITECT. COPYRIGHT RESERVED.

19		
18		
17	RE-ISSUED FOR CONSTRUCTION	08/12/15
16	ISSUED FOR CONSTRUCTION	19/11/15
15	ISSUED FOR CONSTRUCTION	13/11/15
14	ISSUED FOR FINAL COORDINATION	14/09/15
13	REVIEW	21/08/15
12	ISSUED FOR VALUE ENGINEERING	05/08/15
11	ISSUED FOR TENDER	04/16/15
10	ISSUED FOR COORDINATION	04/08/15
09	ISSUED FOR COORDINATION	25/03/15
08	ISSUED FOR COORDINATION	11/02/15
07	ISSUED FOR BUILDING PERMIT	12/23/14
06	ISSUED FOR COORDINATION	12/09/14
05	ISSUED FOR COORDINATION	11/28/14
04	ISSUED FOR COORDINATION	10/28/14
03	ISSUED FOR SITE PLAN CONTROL	09/22/14
02	ISSUED FOR COORDINATION	08/22/14
01	REVISION	MM/00/YY DATE



**WOODMAN ARCHITECT**  
 ASSOCIATES LTD.  
 4 BEECHWOOD, SUITE 201, OTTAWA, ONTARIO, CANADA K1L 6L9  
 TEL: 613 281 8800 FAX: 613 281 8844 MAILBOX@WOODMANARCHITECT.COM

**CONSULTANTS:**  
 STRUCTURAL - WSP  
 MECHANICAL - BGA  
 ELECTRICAL - BGA

**PROJECT:**  
**LONG SAULT VILLA**  
**NEW LINKED BUILDING**

**DRAWING:**  
**BUILDING ELEVATIONS**

DATE: DECEMBER 23, 2014  
 SCALE: 1/100  
 DRAWN BY: S.S.  
 CHECKED BY: R.L.M.

JOB NO.: 1426  
 DRAWING NO.: AE.01