

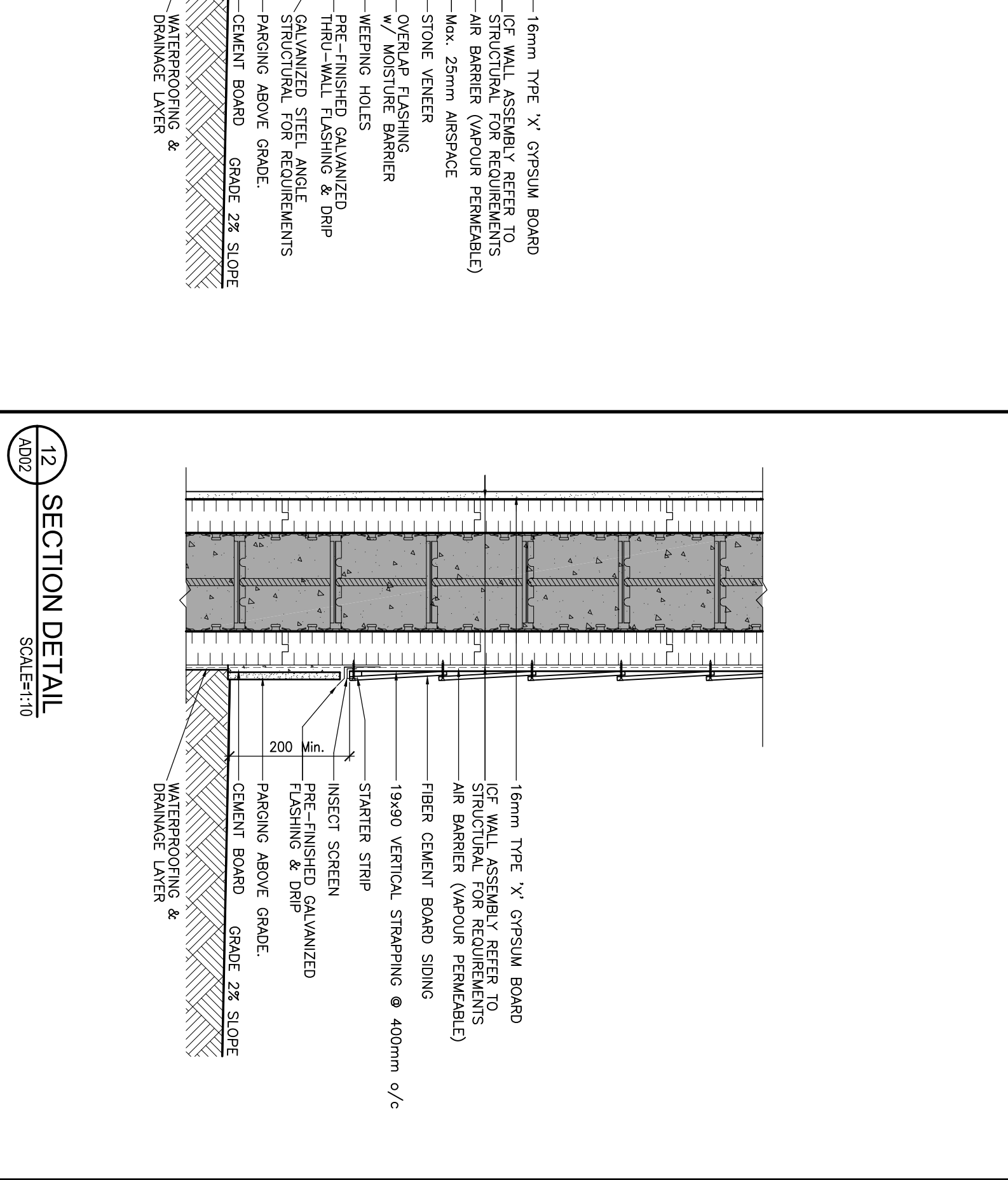
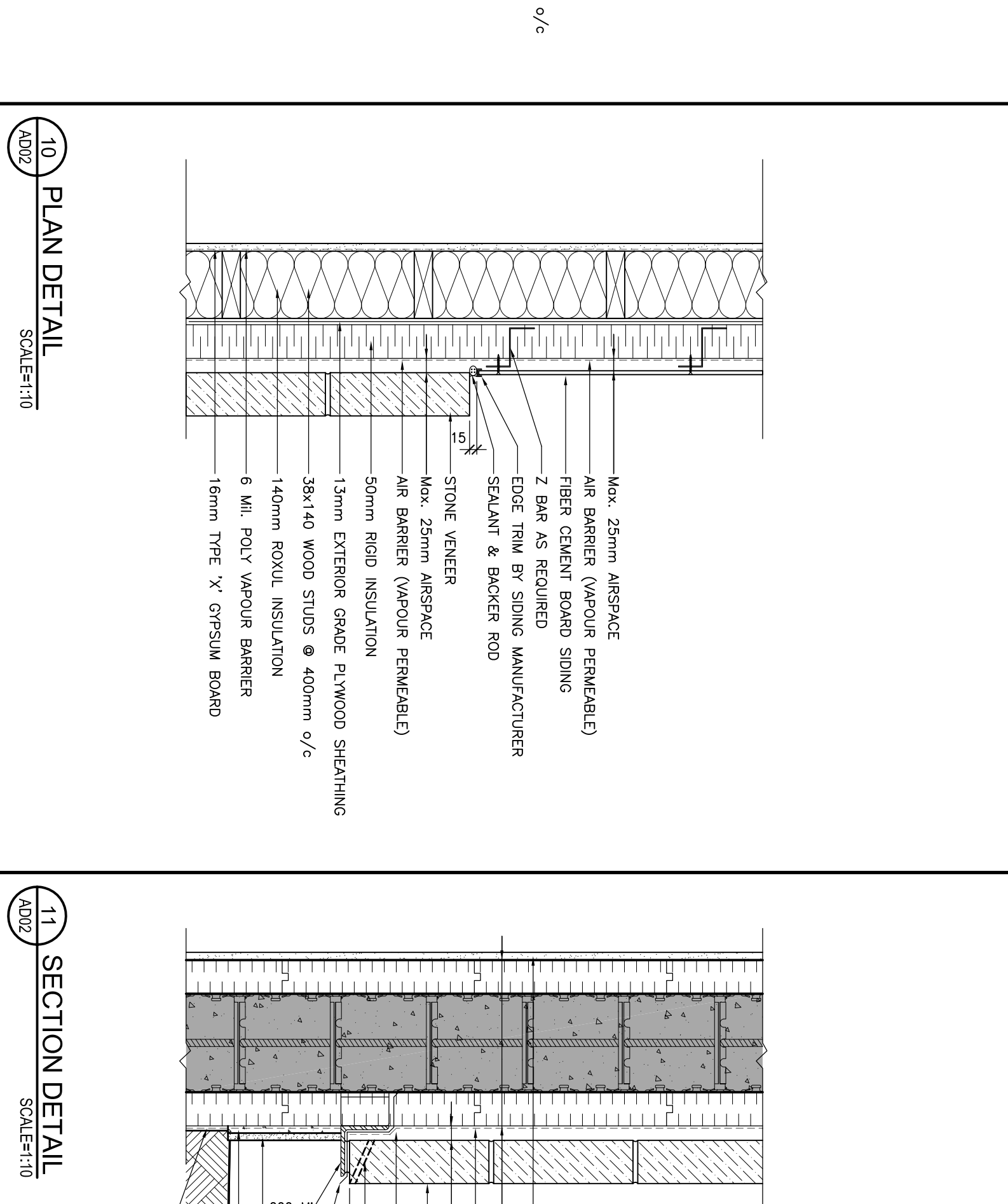
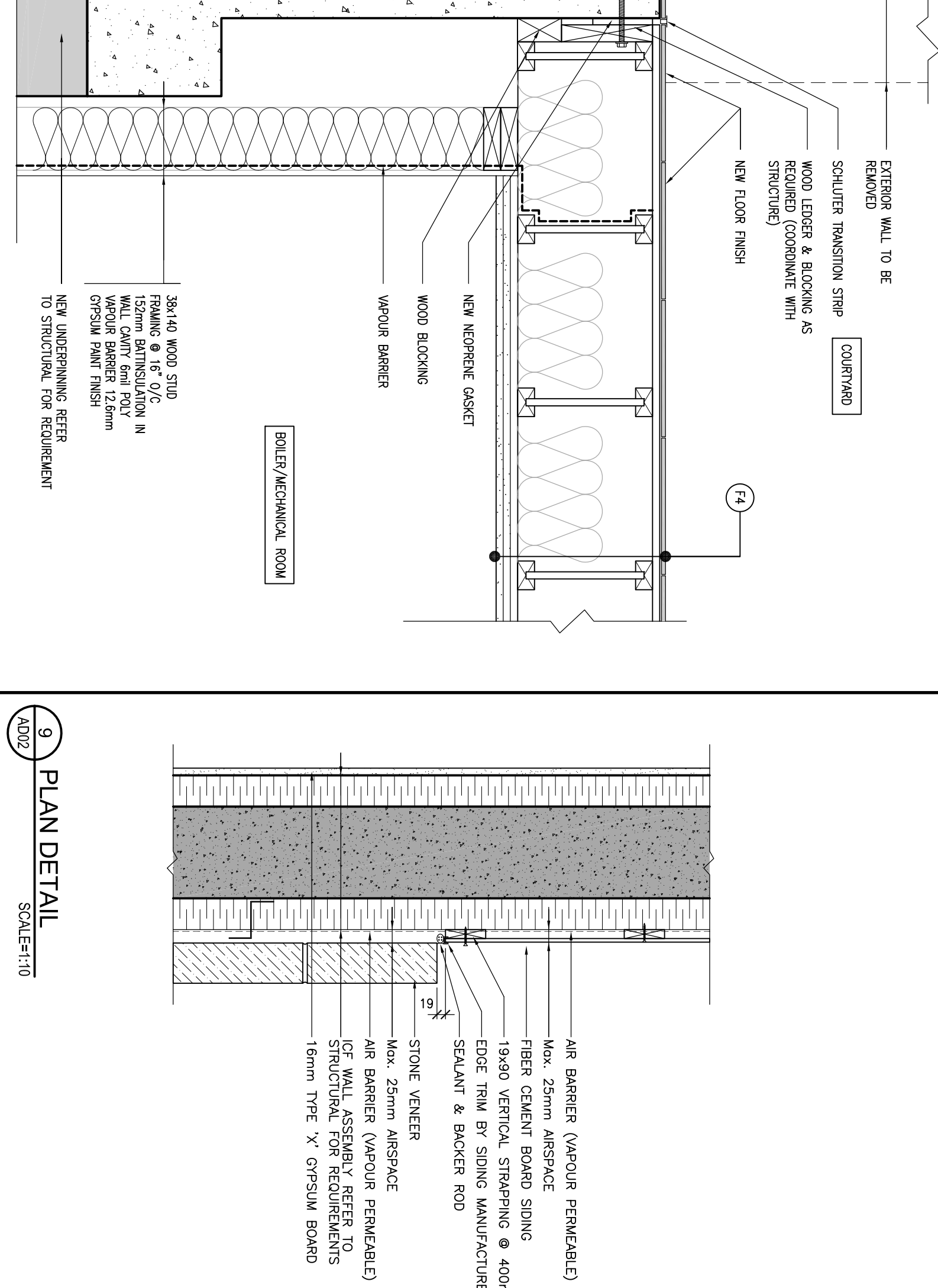
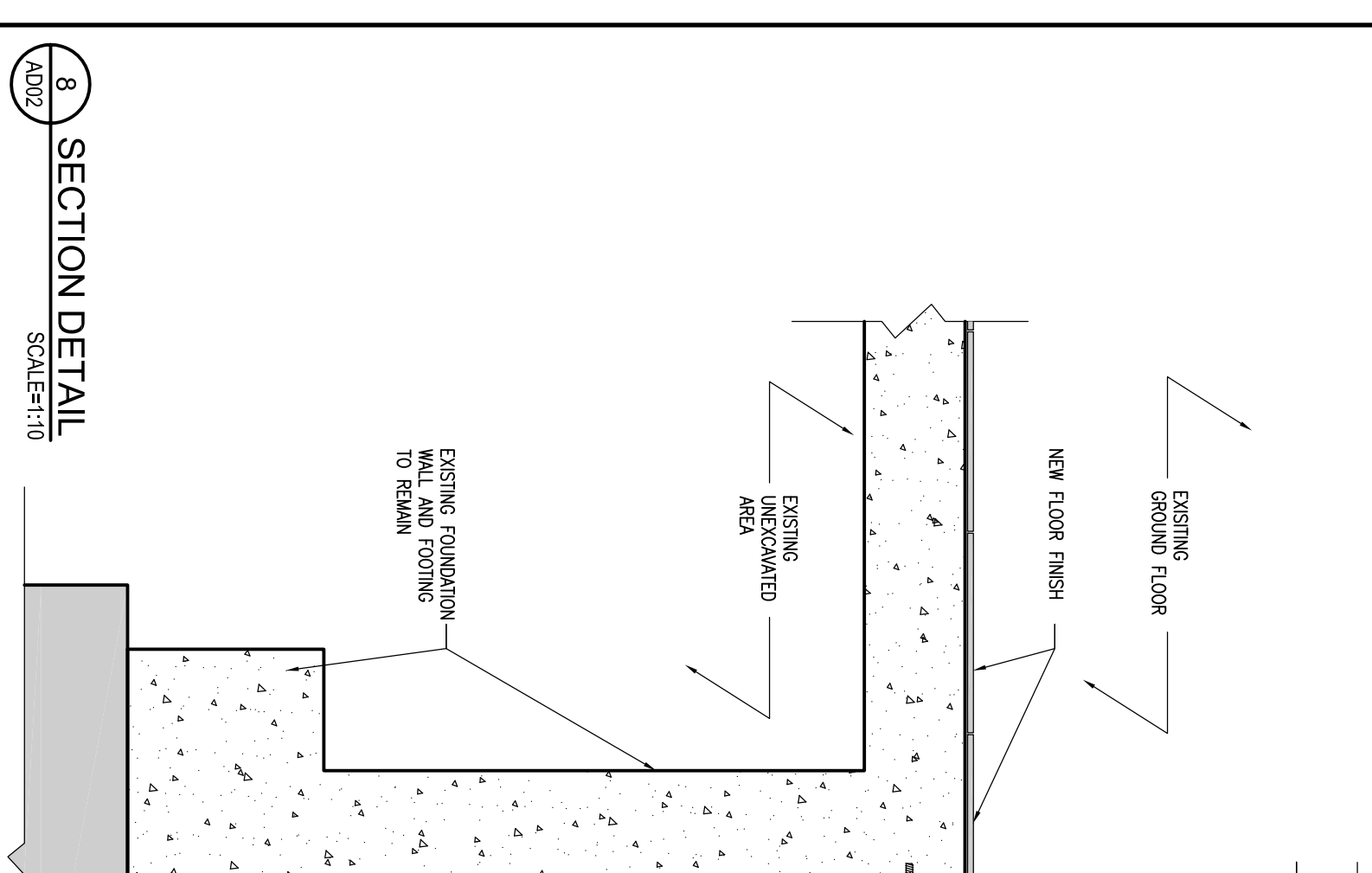
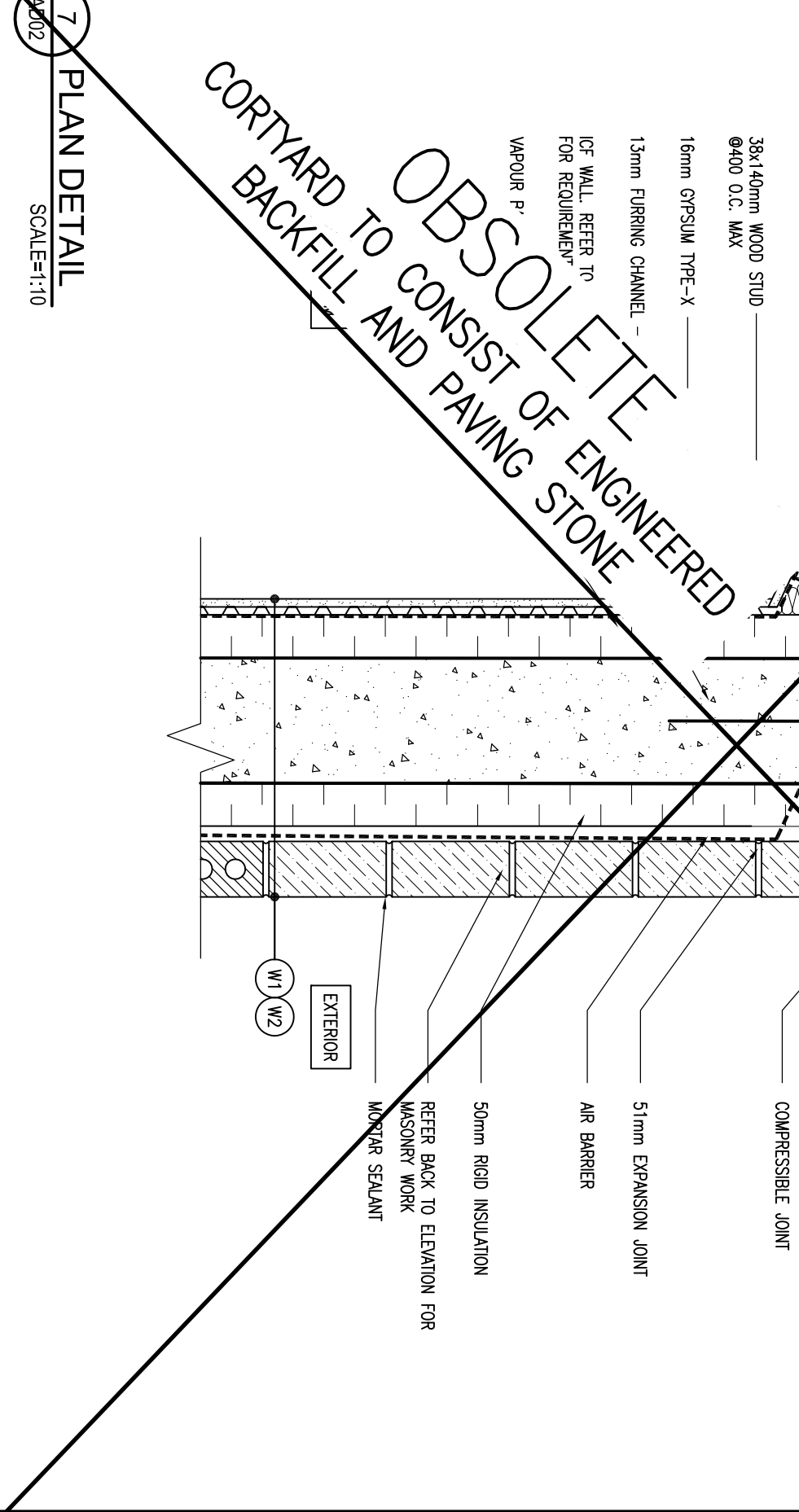
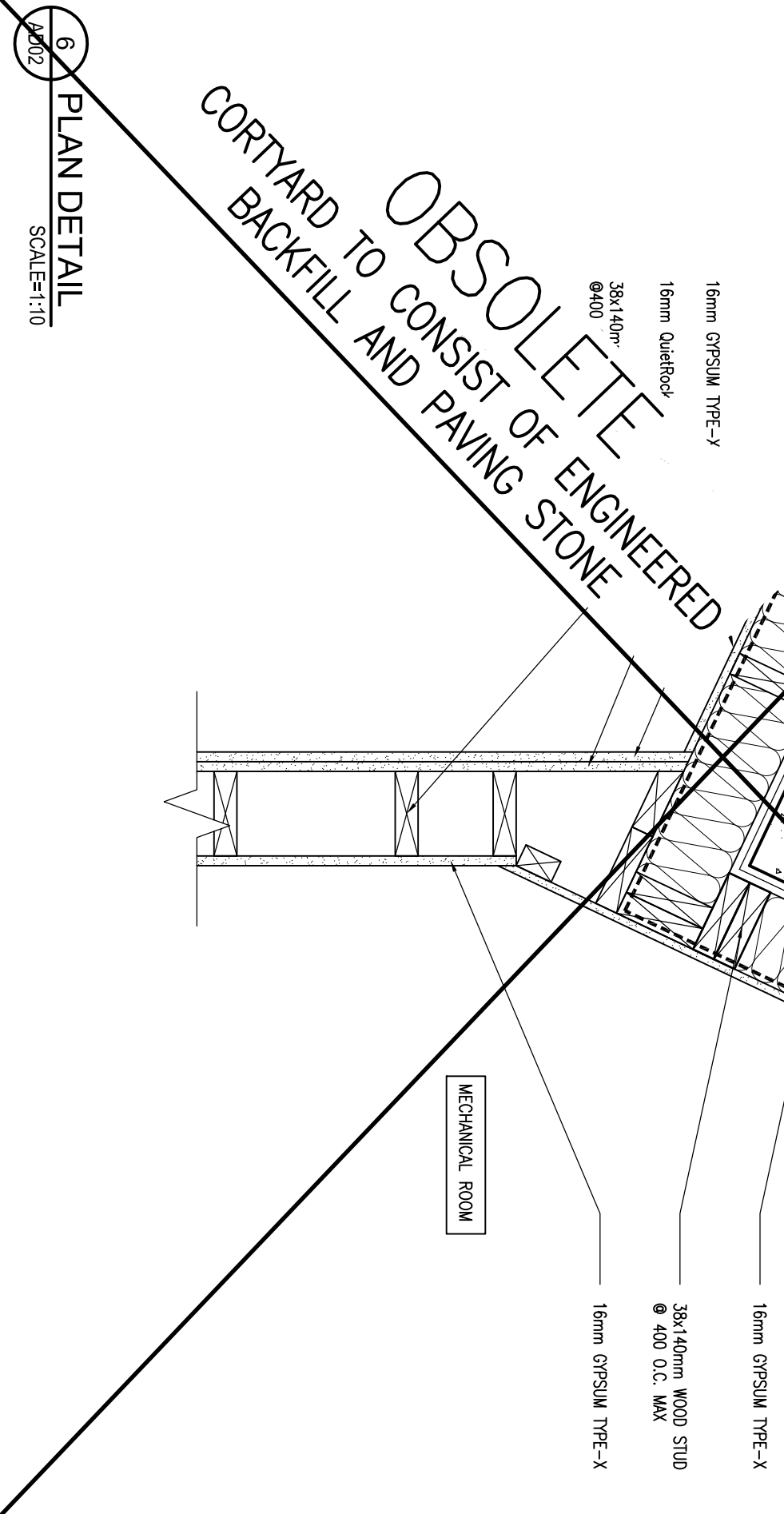
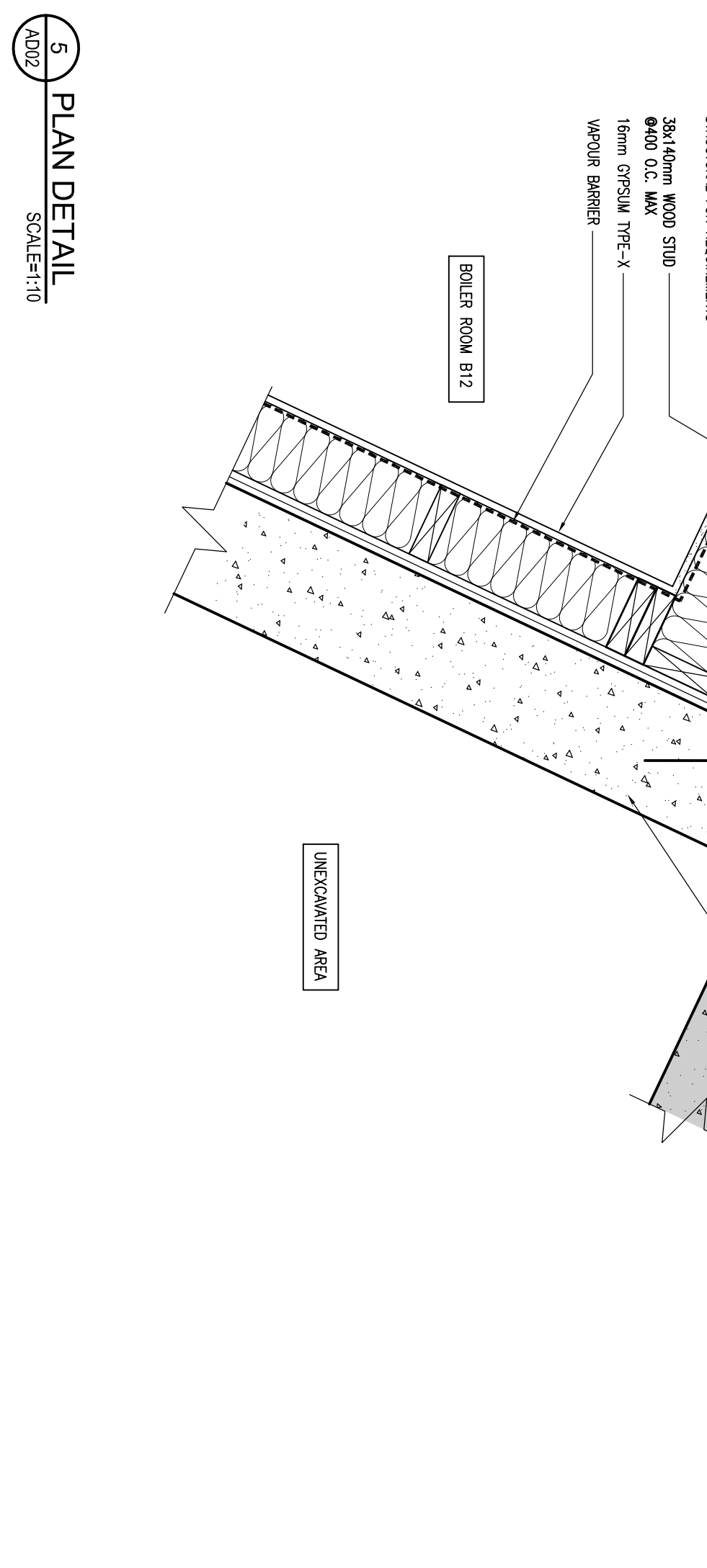
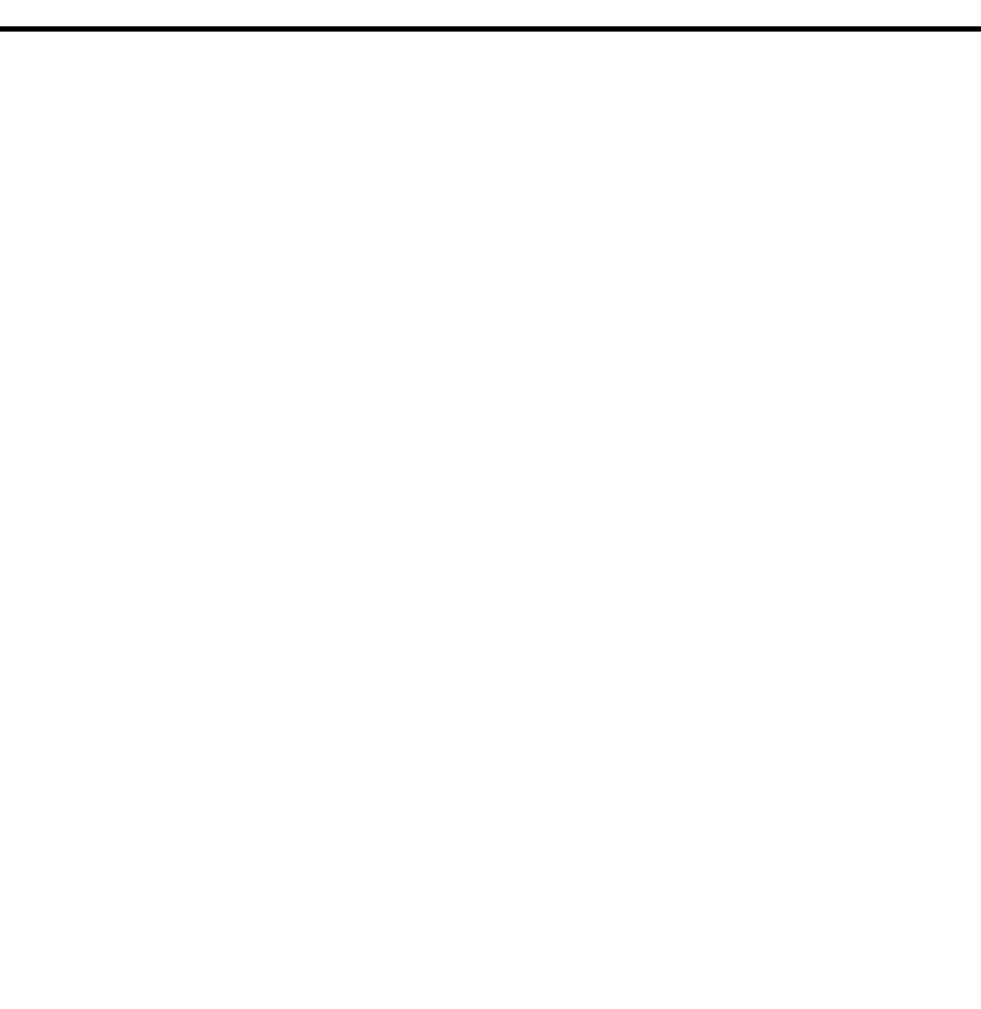
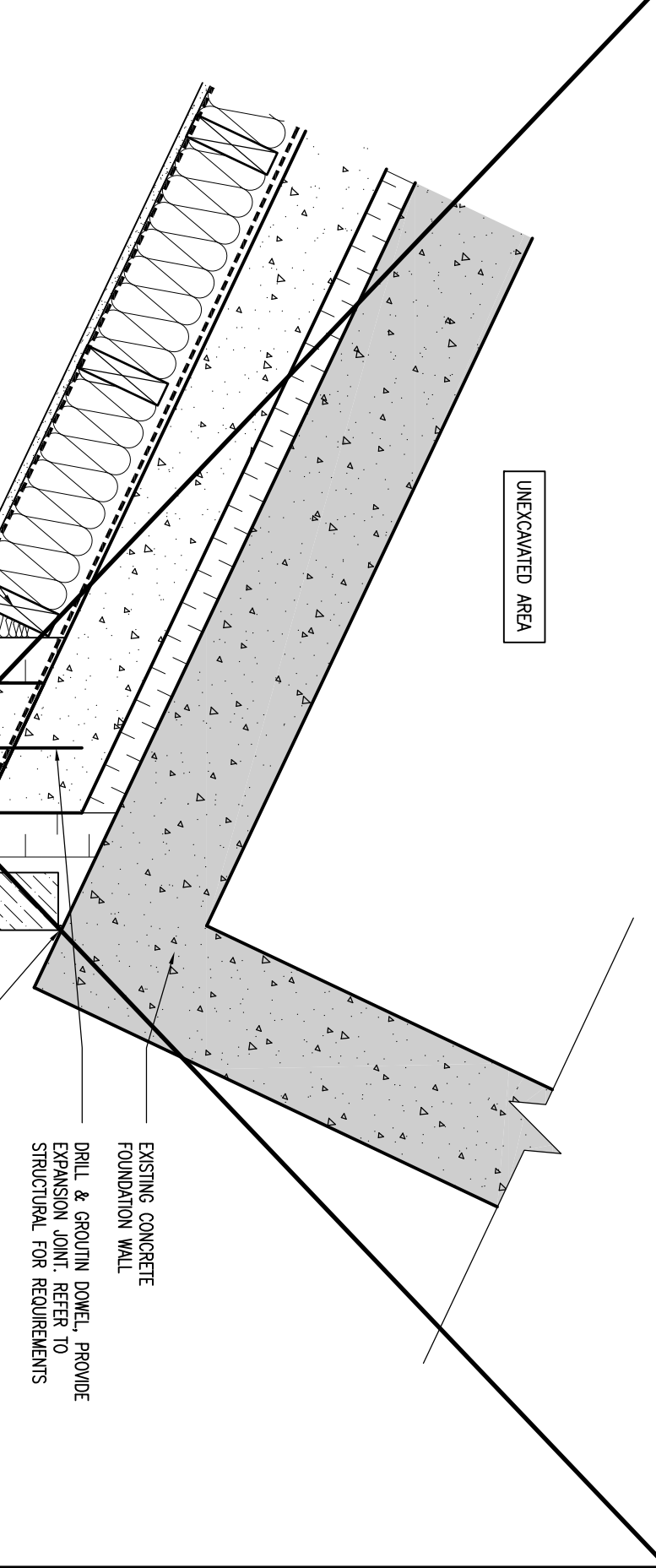
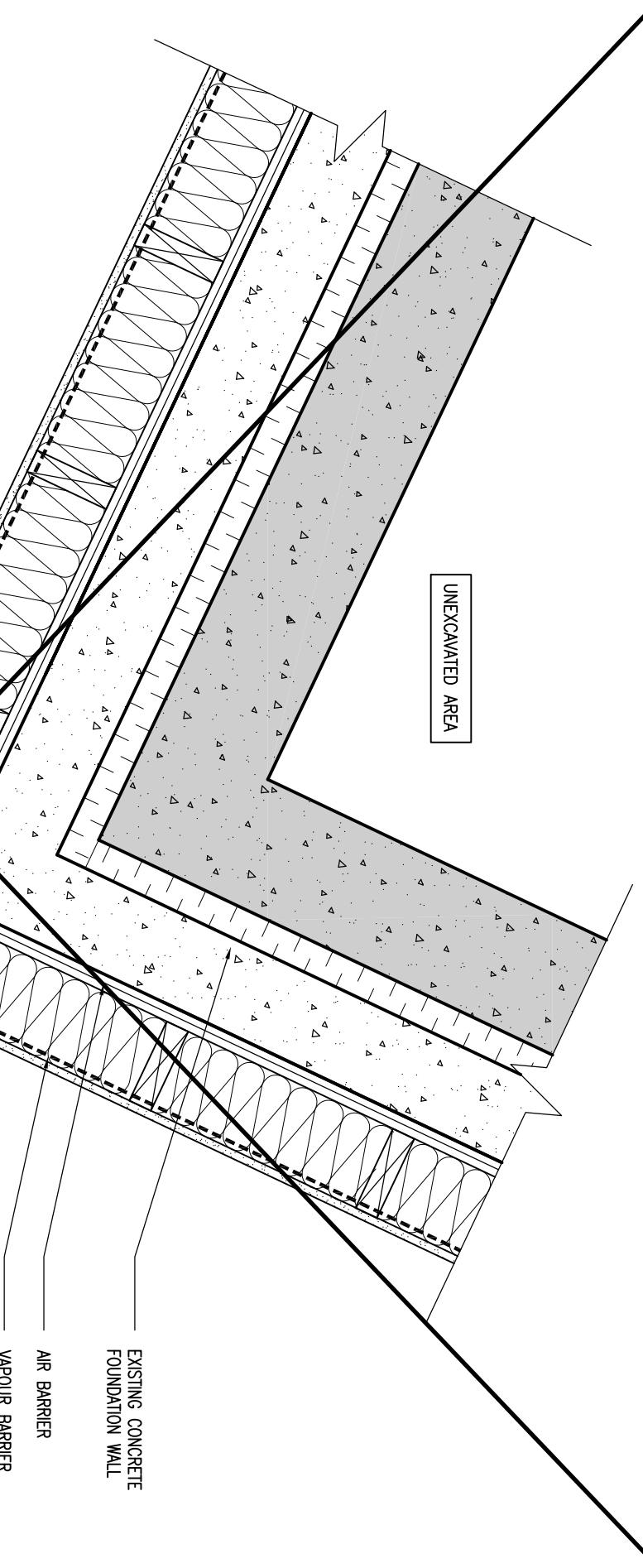
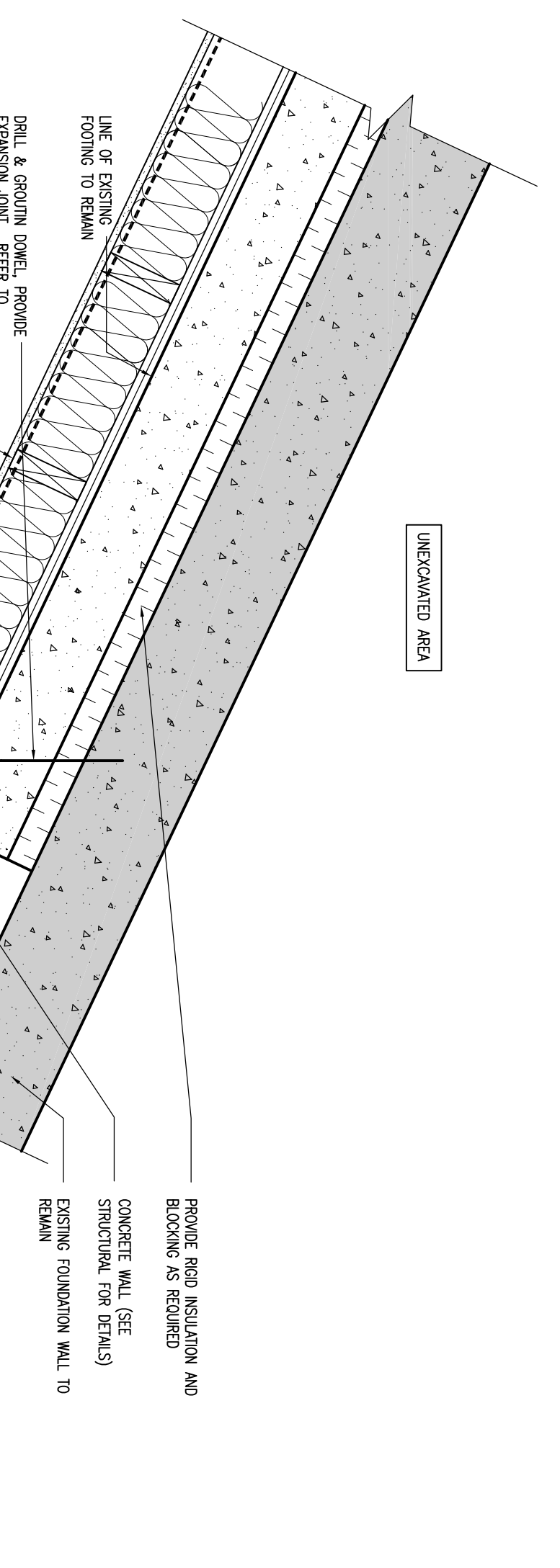
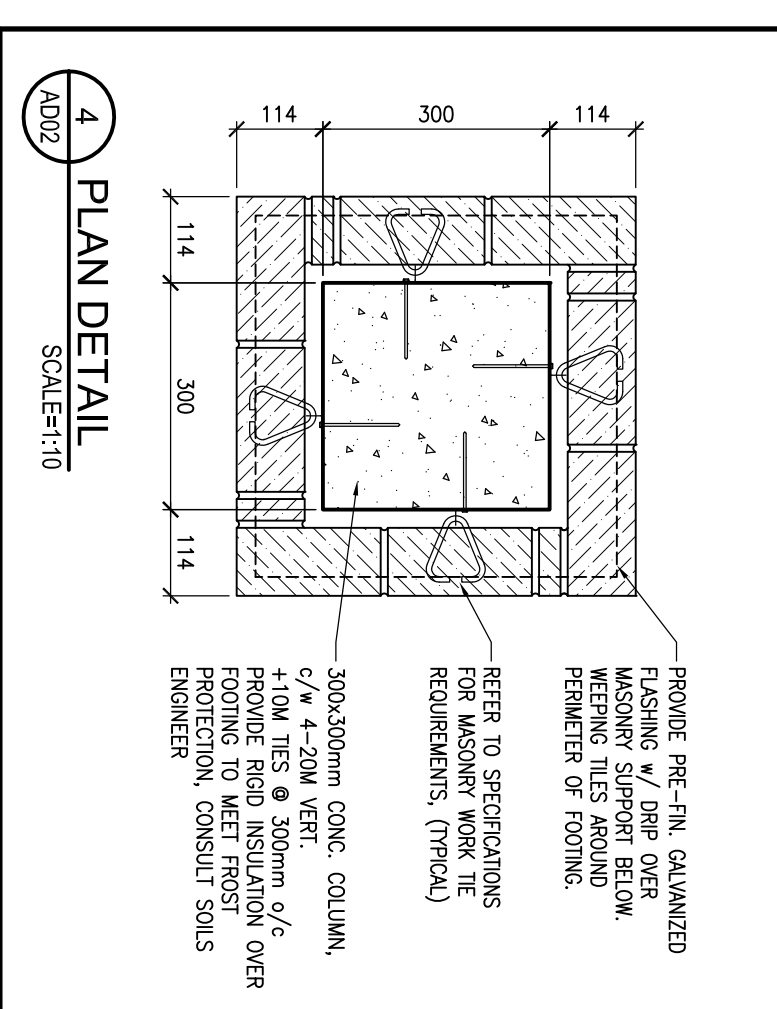
GENERAL NOTES:
 ALL WINDOWS ARE TO BE SECURED AT THE JAMB ONLY. USE OF SHIMS IS TO BE ADDED SO NO PRESSURE POINTS ARE CREATED.

EXTERIOR
 19mm STONE VENEER
 AIR BARRIER (VARIOUS PENETRABLE)
 50mm EXT. GRADE PLYWOOD SHEATHING
 13mm EXT. GRADE PLYWOOD SHEATHING
 38x140 WOOD STUDS @ 400mm o/c
 150mm ROCK WOOL INSULATION
 150mm POLY VAPOUR BARRIER
 150mm TYPE 'X' GYPSUM BOARD
 Z BAR AS REQUIRED

INTERIOR
 150mm CONCRETE COLUMN TO BE REINFORCED WITH 4 #4 BARS @ 200mm o/c
 100mm CONCRETE SLAB
 100mm CONCRETE BASE
 REFER TO MECHANICAL FOR MORE DETAILS

MECHANICAL ROOM
 150mm CONCRETE COLUMN TO BE REINFORCED WITH 4 #4 BARS @ 200mm o/c
 100mm CONCRETE SLAB
 100mm CONCRETE BASE
 REFER TO MECHANICAL FOR MORE DETAILS

BOILER ROOM #12
 150mm CONCRETE COLUMN TO BE REINFORCED WITH 4 #4 BARS @ 200mm o/c
 100mm CONCRETE SLAB
 100mm CONCRETE BASE
 REFER TO MECHANICAL FOR MORE DETAILS



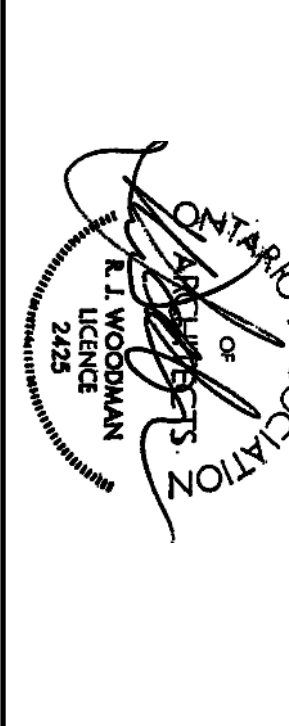
WOODMAN ARCHITECT ASSOCIATES LTD.
 4 BEECHWOOD SUITE 201 OTTAWA ONTARIO CANADA K1L 6L9
 TEL: 613 228 8650 FAX: 613 228 8644
 CONSULTANTS:
 STRUCTURAL - WSP
 MECHANICAL - BGA
 ELECTRICAL - BGA

PROJECT:
 LONG SAULT VILLA
 PROPOSED
 NEW LINKED BUILDING

DRAWING:
 PLAN AND SECTION DETAILS

DATE: DECEMBER 23, 2014
SCALE: AS NOTED
DRAWN BY: S.S.
CHECKED BY: R.L.M.

REV: 02
 14/09/15
 05/09/15
 01/09/15



NO.	REVISION	DATE
01	ISSUED FOR TENDER	05/09/15
02	ISSUED FOR COST CONSULTANT	14/09/15
03	ISSUED FOR CONSTRUCTION	19/11/15
04	ISSUED FOR FINAL CONSULTANT	13/11/15
05	RE-ISSUED FOR CONSTRUCTION	08/12/15
06		
07		
08		
09		
10		
11		
12		
13		
14		
15		
16		
17		
18		
19		