

- NOTES:
- 1) ALL WORK TO BE IN COMPLIANCE WITH LOCAL BUILDING CODES, REGULATIONS AND BYLAWS.
 - 2) ADDITIONAL DRAWINGS MAY BE ISSUED FOR CLARIFICATION TO ASSIST PROPER EXECUTION OF WORK. SUCH DRAWINGS WILL HAVE THE SAME MEANING AND INTENT AS IF THEY WERE INCLUDED WITH PLANS IN CONTRACT DOCUMENTS.
 - 3) DO NOT SCALE DRAWINGS.
 - 4) ALL SUB-CONTRACTORS TO TAKE THEIR OWN ON-SITE MEASUREMENTS AND BE RESPONSIBLE FOR THEIR ACCURACY. THESE DRAWINGS ARE ONLY A GRAPHIC REPRESENTATION OF WHAT THE FINAL COMPLETED WORK SHALL LOOK LIKE.
 - 5) NOTIFY SHAWN J. LAWRENCE ARCHITECT FOR ANY ERRORS AND/OR OMISSIONS PRIOR TO START OF WORK.

LEGEND

— 2 Hr. FIRE SEPARATION

- - - 1 Hr. FIRE SEPARATION

NO.	DATE	REVISION
1	JAN 24 14	PRELIMINARY REVIEW
2	JUL 15 14	SITE PLAN SUBMISSION
3	DEC 18 14	PERMIT SUBMISSION
4	JAN 24 15	REVISIONS TO PLANS
5	FEB 10 15	REVISION TO CEILING
6	APRIL 15 15	PERMIT REVISION SUBMISSION
7	JULY 16 15	GENERAL PLAN REVISIONS
8	NOV 20 15	GENERAL PLAN REVISIONS
9	MAY 9 16	GENERAL PLAN REVISIONS

NO.	DATE	REVISION
1	JAN 24 14	PRELIMINARY REVIEW
2	JUL 15 14	SITE PLAN SUBMISSION
3	DEC 18 14	PERMIT SUBMISSION
4	JAN 24 15	REVISIONS TO PLANS
5	FEB 10 15	REVISION TO CEILING
6	APRIL 15 15	PERMIT REVISION SUBMISSION
7	JULY 16 15	GENERAL PLAN REVISIONS
8	NOV 20 15	GENERAL PLAN REVISIONS
9	MAY 9 16	GENERAL PLAN REVISIONS

NO.	DATE	REVISION
1	JAN 24 14	PRELIMINARY REVIEW
2	JUL 15 14	SITE PLAN SUBMISSION
3	DEC 18 14	PERMIT SUBMISSION
4	JAN 24 15	REVISIONS TO PLANS
5	FEB 10 15	REVISION TO CEILING
6	APRIL 15 15	PERMIT REVISION SUBMISSION
7	JULY 16 15	GENERAL PLAN REVISIONS
8	NOV 20 15	GENERAL PLAN REVISIONS
9	MAY 9 16	GENERAL PLAN REVISIONS

SJL

S. J. LAWRENCE ARCHITECT INCORPORATED

18 BRADLEE RD., SUITE 300, OMAHA, NE, 68138-9877
 TEL: 402.739.7771 FAX: 402.739.7383
 EMAIL: sjl@sjlarch.com

THIS DRAWING IS THE SOLE PROPERTY OF SHAWN J. LAWRENCE ARCHITECT INC. REPRODUCTION IS NOT PERMITTED.

DRAWN BY: MG & JB	DESIGNED BY: S.J.L.
DATE: MAR '14	CHECKED BY: S.J.L. & JB
SCALE: AS INDICATED	PLOT DATE: JULY 16, 2015

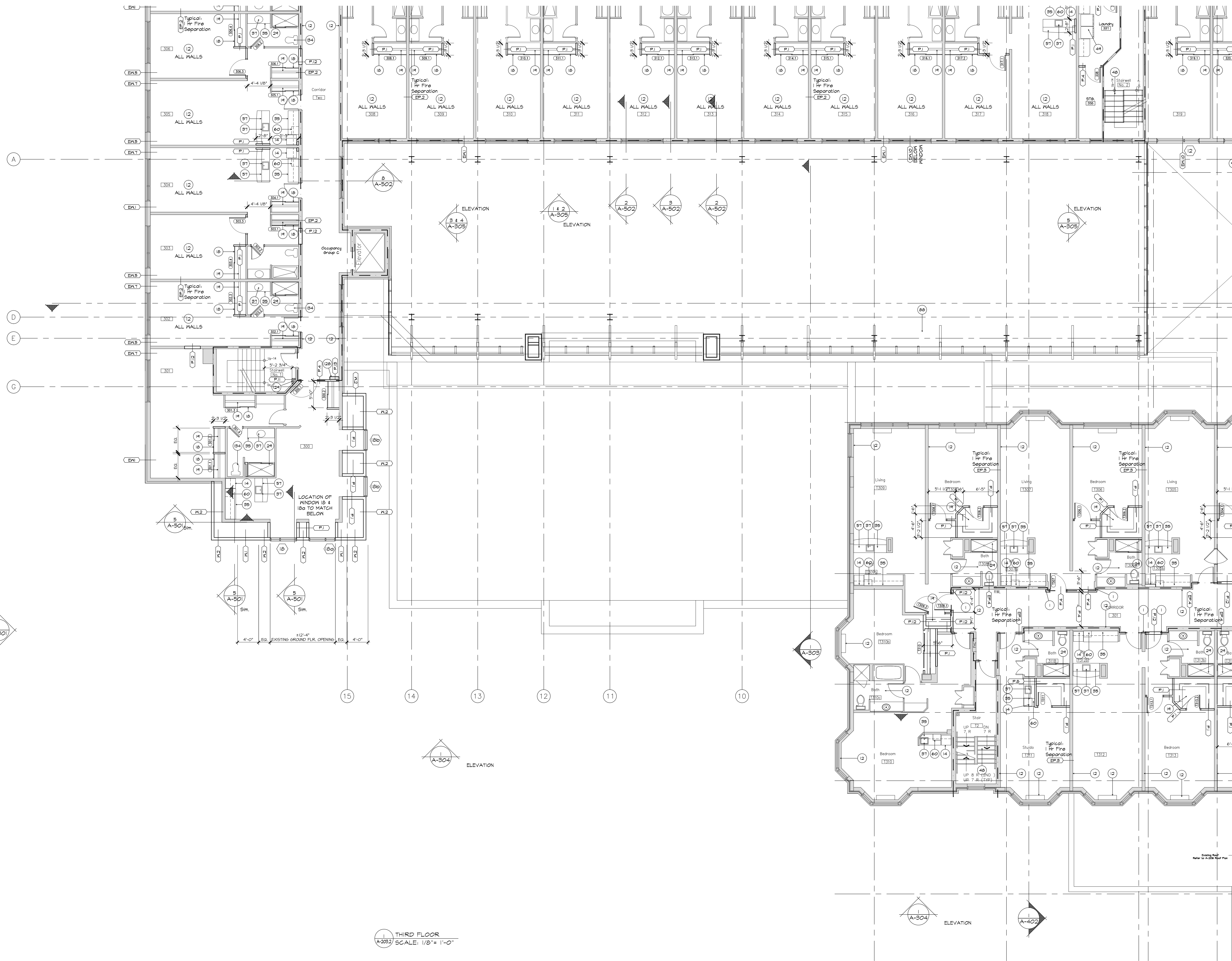
PROJECT: **SOUTHWAY INN RETRO-FIT RETIREMENT HOME**

JOB NO.: SL-697-13

ISSUE NO.: **2**

DATE: 2016/03 4:25 PM

SHEET: **A-203.2**



THIRD FLOOR
 A-203.2 SCALE: 1/8" = 1'-0"