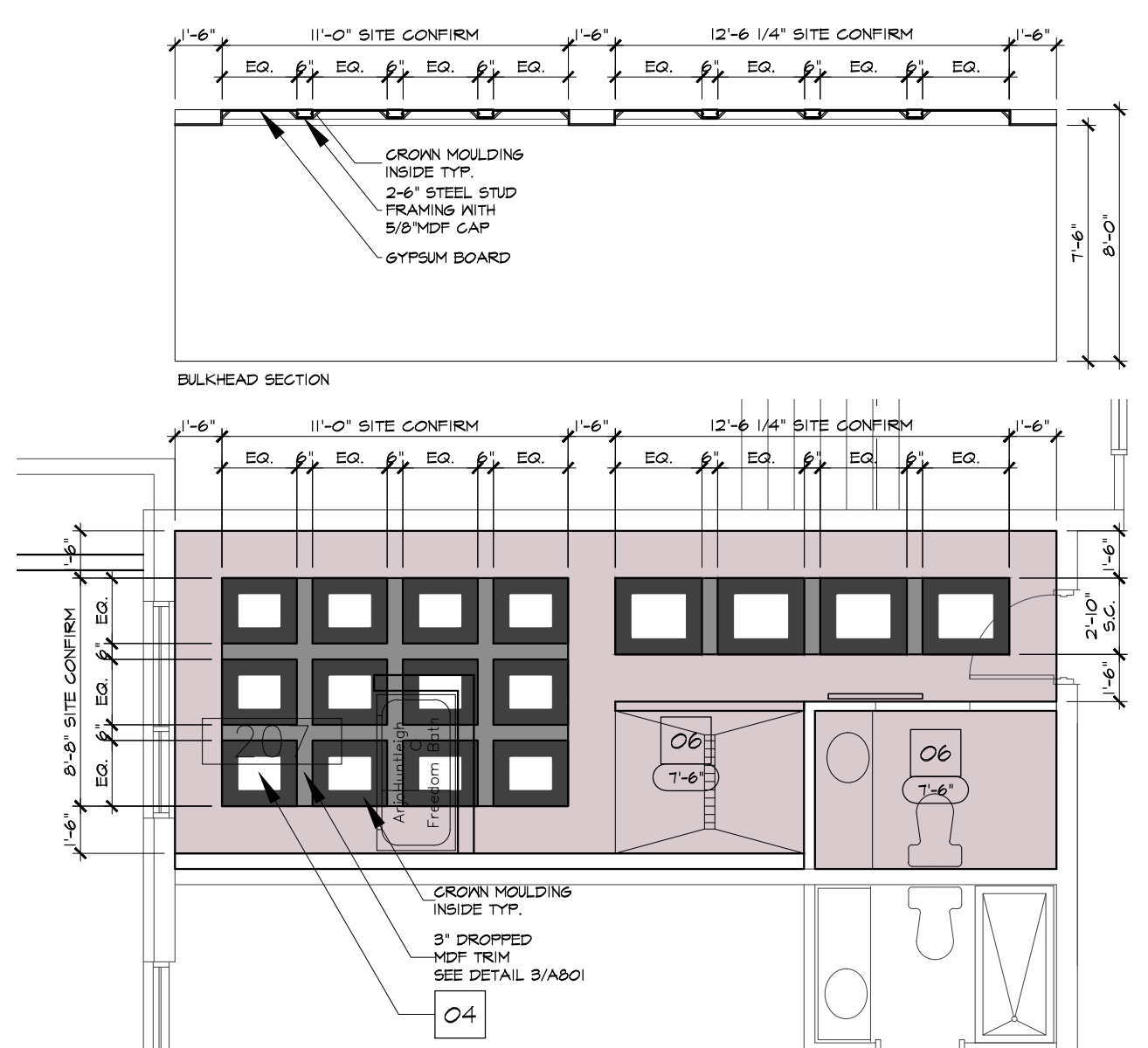
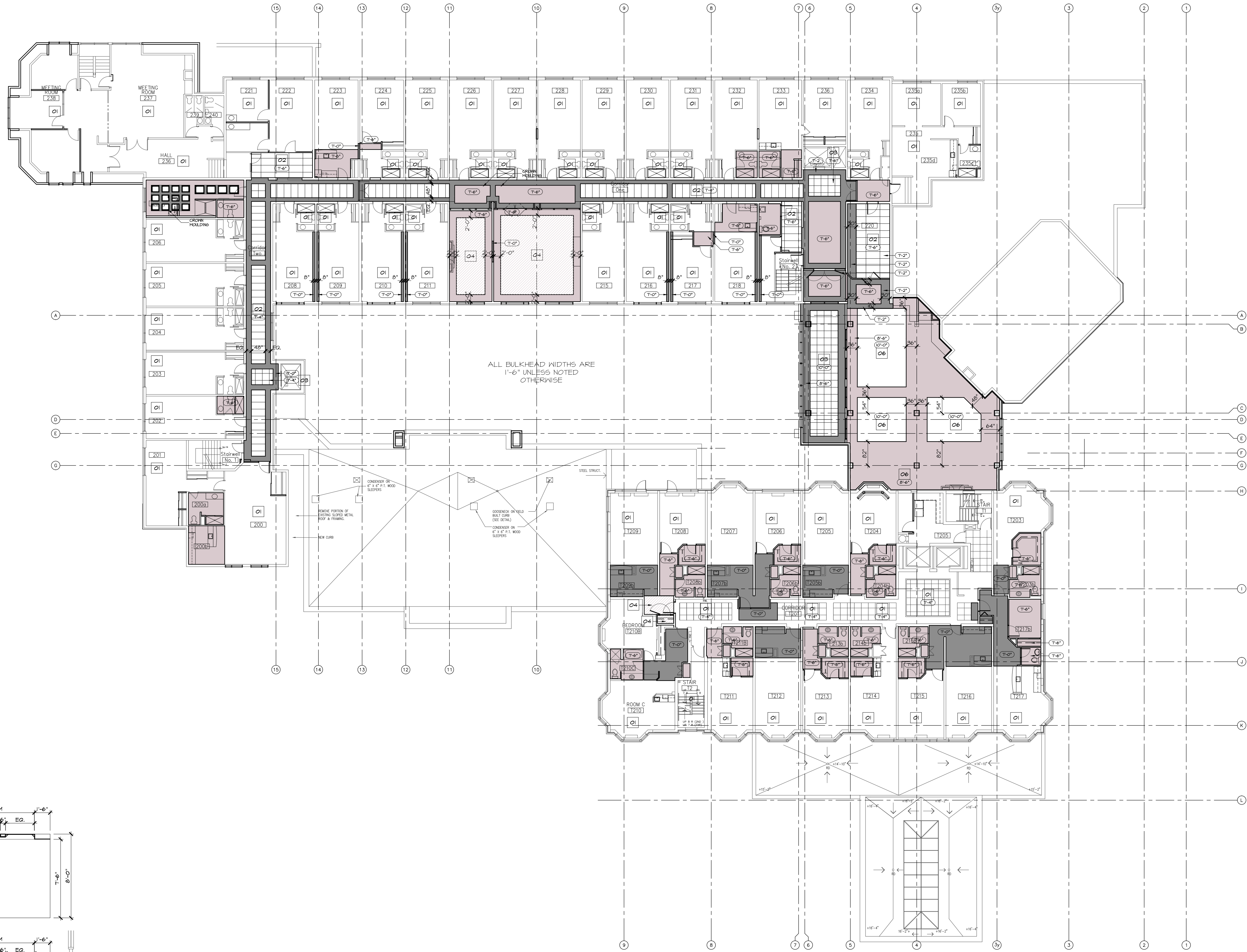


- NEW GYPSUM BOARD BULKHEAD/CEILING AT ELEVATION INDICATED
- NEW GYPSUM BOARD BULKHEAD/CEILING AT ELEVATION INDICATED
- NEW GYPSUM BOARD BULKHEAD/CEILING AT ELEVATION INDICATED
- NEW 2'x4" LAY-IN TILE CEILING AT ELEVATION INDICATED
- NEW 2'x2" LAY-IN TILE CEILING AT ELEVATION INDICATED
- NEW GYPSUM BOARD BULKHEAD/CEILING AT UPS OF STRUCTURE
- NEW GYPSUM BOARD BULKHEAD / COVE C/W LIGHTING AT ELEVATION INDICATED
- NEW GYPSUM BOARD BULKHEAD/CEILING AT ELEVATION INDICATED
- NEW FIRE RATED GYPSUM BOARD BULKHEAD / CEILING AT UPS OF STRUCTURE
- NEW GYPSUM BOARD BULKHEAD/CEILING AT ELEVATION TO MATCH EXISTING
- RESERVED
- RESERVED

VERIFY EXISTING CONDITIONS ON SITE. COORDINATE WITH EXISTING CEILING MOUNTED EQUIPMENT, MECHANICAL SYSTEMS AND DUCT WORK.

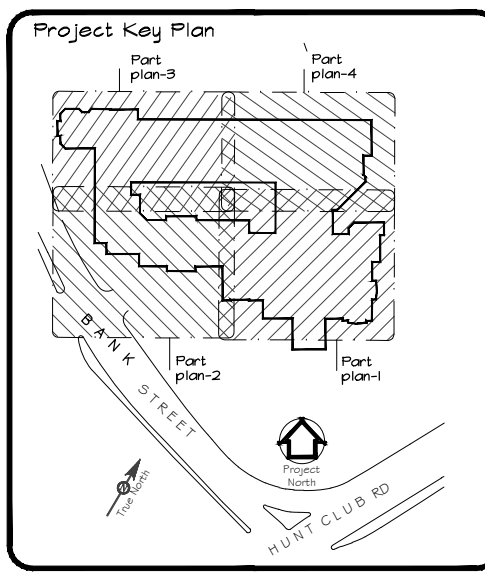
WHERE EXISTING CEILING CONSTRUCTION IS INCORPORATED INTO WORK, MATCH EXISTING CEILING HEIGHTS.

COORDINATE HEIGHTS AND DIMENSIONS WITH ARCHITECT.



2 TUB ROOM 201 RCP & BULKHEAD SECTION
A-802 SCALE: 3/16" = 1'-0"

1 SECOND FLOOR REFLECTED CEILING PLAN
A-802 SCALE: 1/16" = 1'-0"



- NOTES:
- 1) ALL WORK TO BE IN COMPLIANCE WITH LOCAL BUILDING CODES, REGULATIONS AND BYLAWS.
 - 2) ADDITIONAL DRAWINGS MAY BE ISSUED FOR CLARIFICATION TO ASSIST PROPER EXECUTION OF WORK. SUCH DRAWINGS WILL HAVE THE SAME MEANING AND INTENT AS IF THEY WERE INCLUDED WITH PLANS IN CONTRACT DOCUMENTS.
 - 3) DO NOT SCALE DRAWINGS.
 - 4) ALL SUB-CONTRACTORS TO TAKE THEIR OWN ON-SITE MEASUREMENTS AND BE RESPONSIBLE FOR THEIR ACCURACY. THESE DRAWINGS ARE ONLY A GRAPHIC REPRESENTATION OF WHAT THE FINAL COMPLETED WORK SHALL LOOK LIKE.
 - 5) NOTIFY SHAWN J. LAWRENCE ARCHITECT FOR ANY ERRORS AND/OR OMISSIONS PRIOR TO START OF WORK.

NO.	DATE	REVISION

NO.	DATE	REVISION

NO.	DATE	REVISION
8	MAY 9, 16	GENERAL PLAN REVISIONS
8	NOV 20, 15	GENERAL PLAN REVISIONS
7	JULY 16, 15	GENERAL PLAN REVISIONS
6	APRIL 15, 15	PERMIT REVISION SUBMISSION
5	FEB 10, 15	REVISION TO CEILINGS
4	JAN 24, 15	REVISIONS TO PLANS
3	DEC 18, 14	PERMIT SUBMISSION
2	JULY 15, 14	SITE PLAN SUBMISSION
1	JAN 24, 14	PRELIMINARY REVIEW

SJL

S. J. LAWRENCE
ARCHITECT INCORPORATED

18 BRIDLE LN., SUITE 200, OWASCO, NY, 13329-9887
TEL: 413-739-7774 FAX: 413-739-7383
EMAIL: sjl@sjlarchitect.com

THIS DRAWING IS THE SOLE PROPERTY OF SHAWN J. LAWRENCE ARCHITECT INC. REPRODUCTION IS NOT PERMITTED.

DRAWN BY: MG & JB	DESIGNED BY: S.J.L.
DATE: MAR '14	CHECKED BY: S.J.L. & JB
SCALE: AS INDICATED	PLOT DATE: JULY 16, 2015

PROJECT:
SOUTHWAY INN
RETRO-FIT
RETIREMENT HOME

JOB NO.: 5L-697-13

DRAWING NAME:
PROPOSED
SECOND FLOOR
REFLECTED CEILING
PLAN

ISSUE: 2 SHEET: A-802
DATE: 2016/5/3 5:02 PM