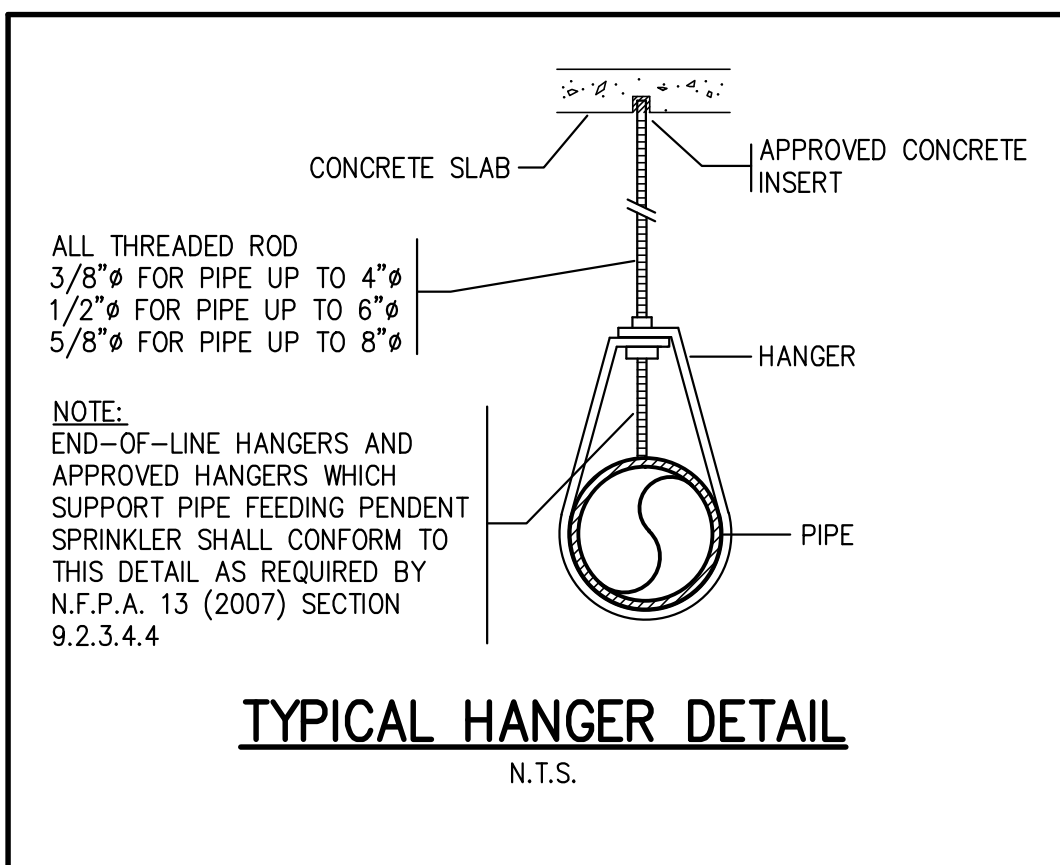
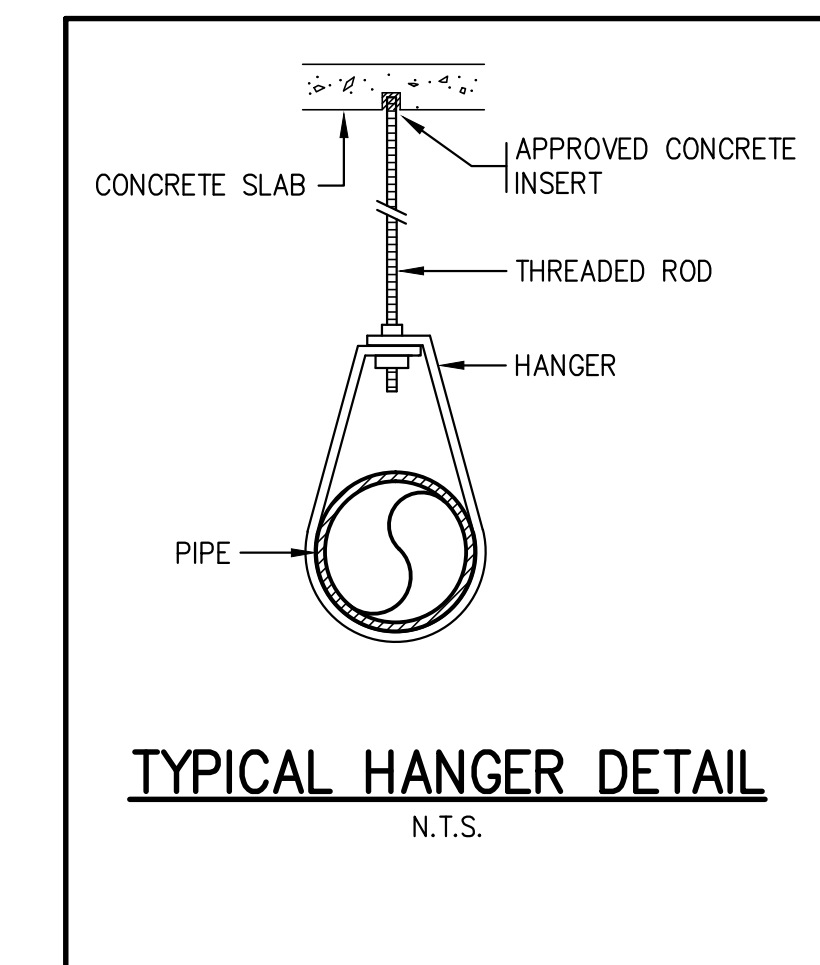


SOUTHGATE ROAD

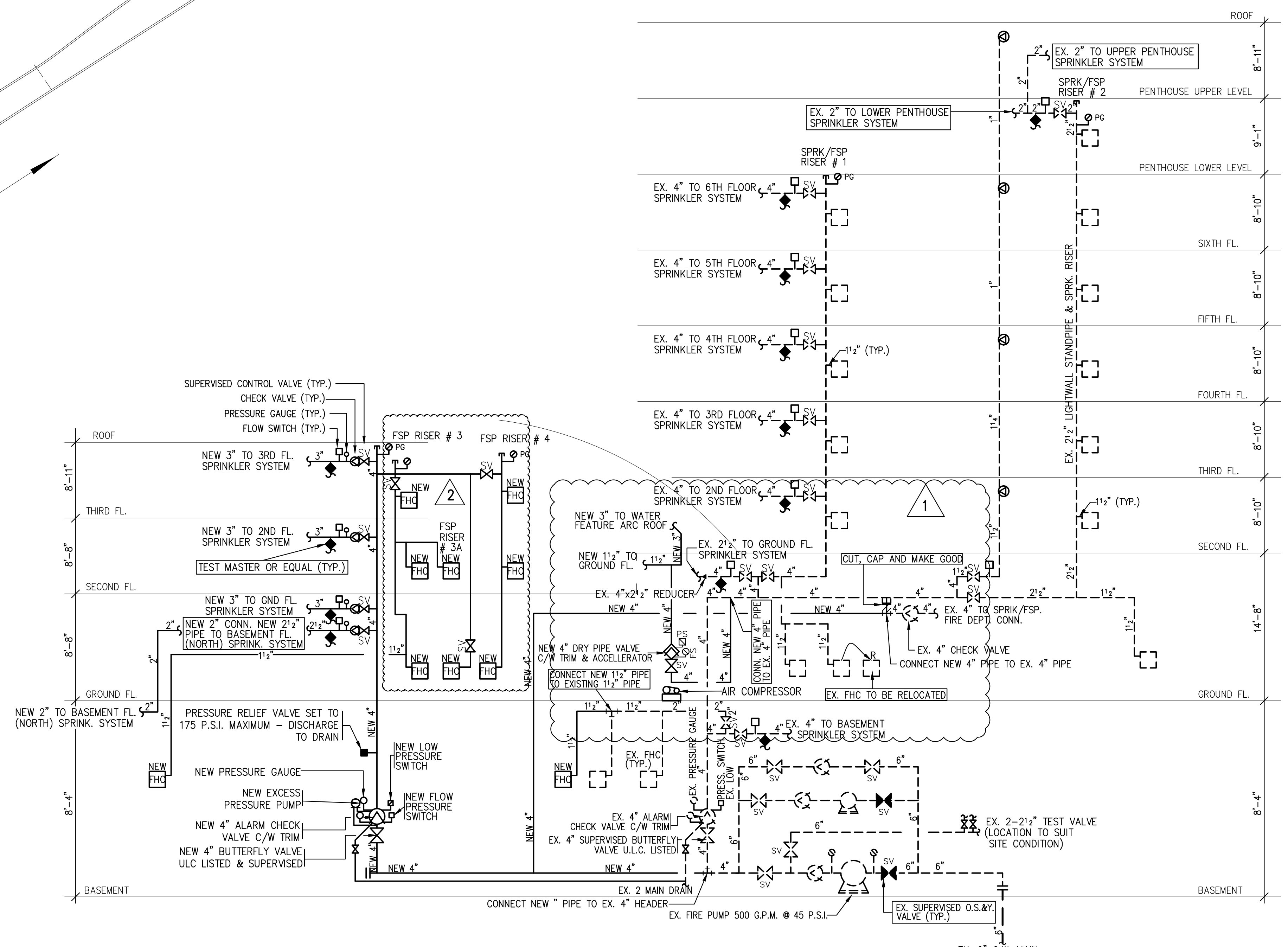
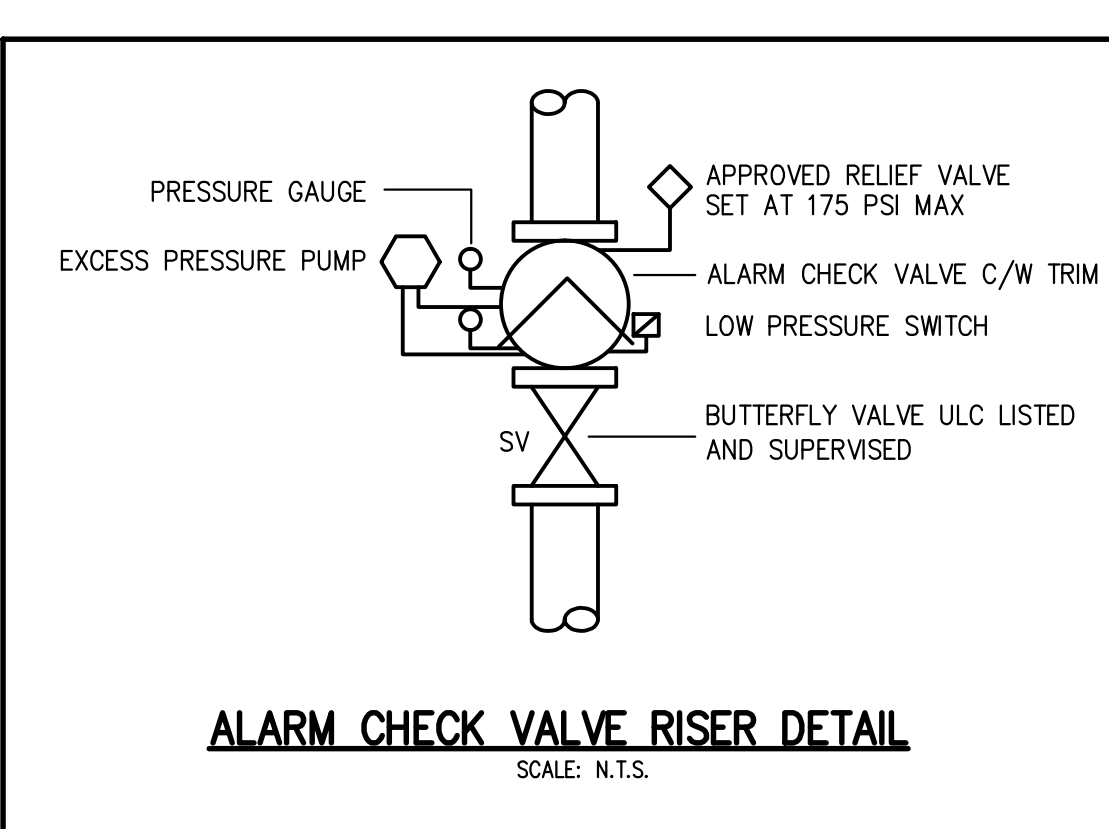
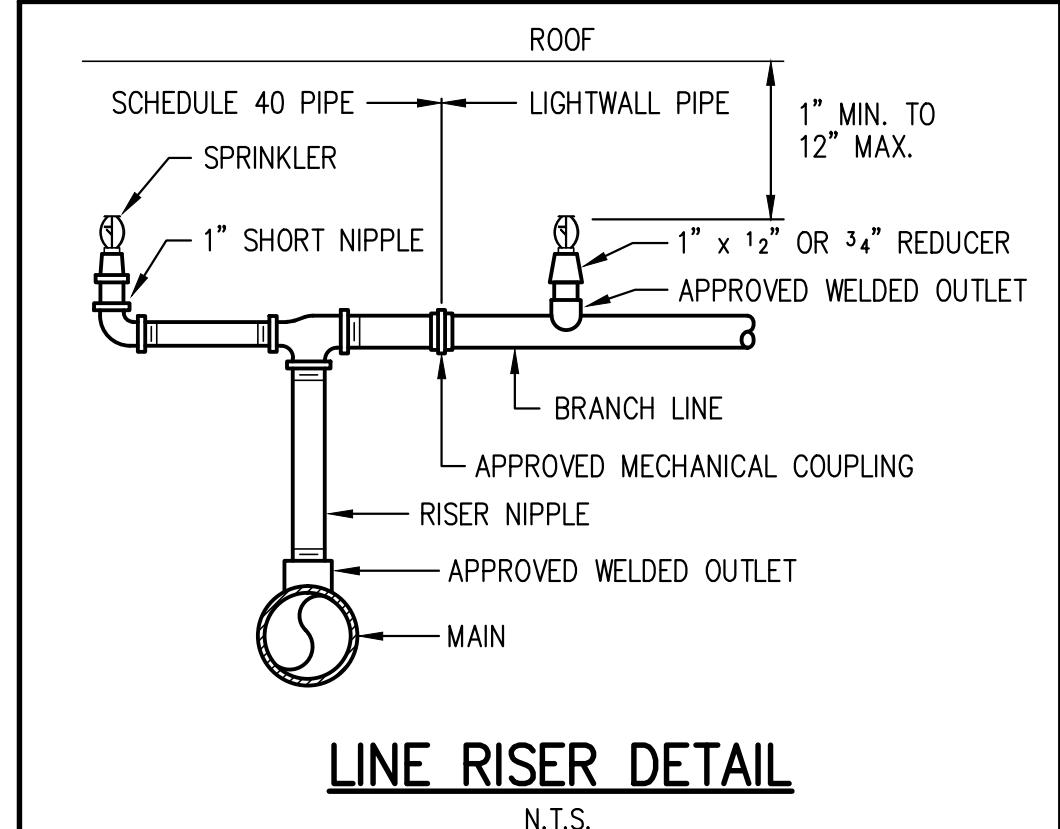
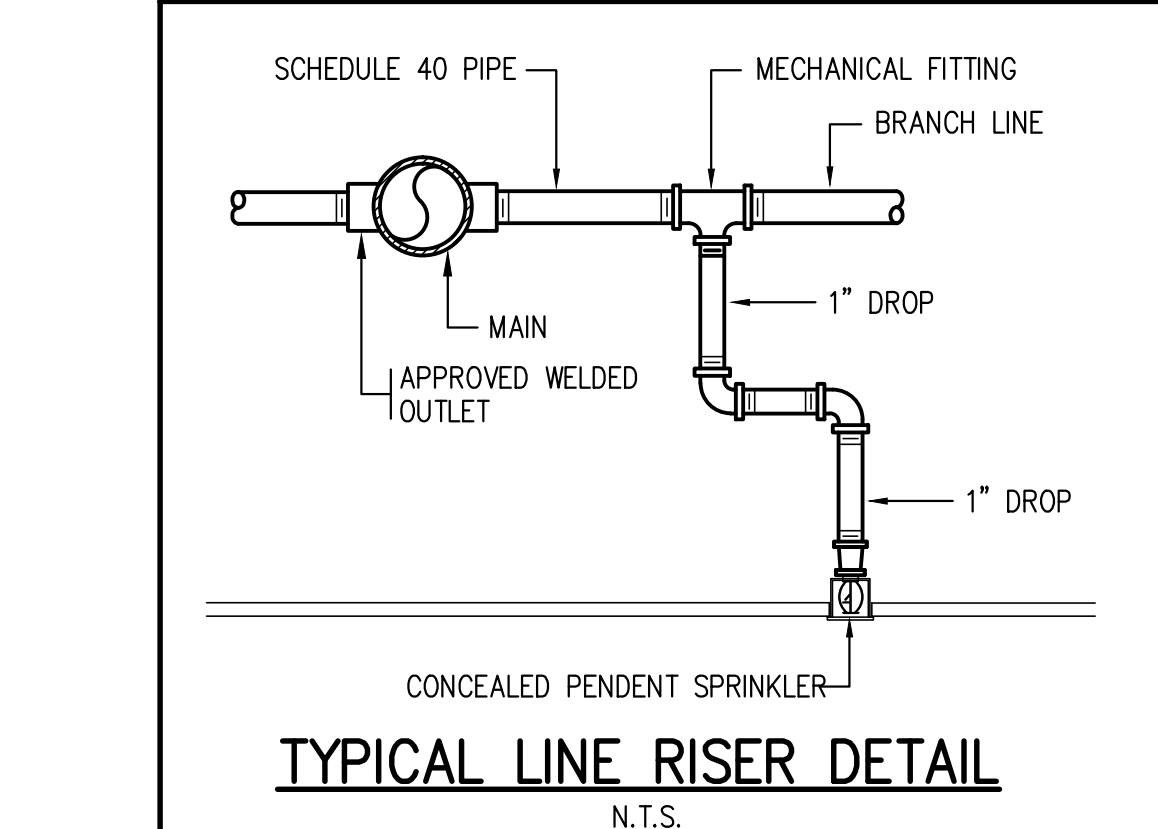
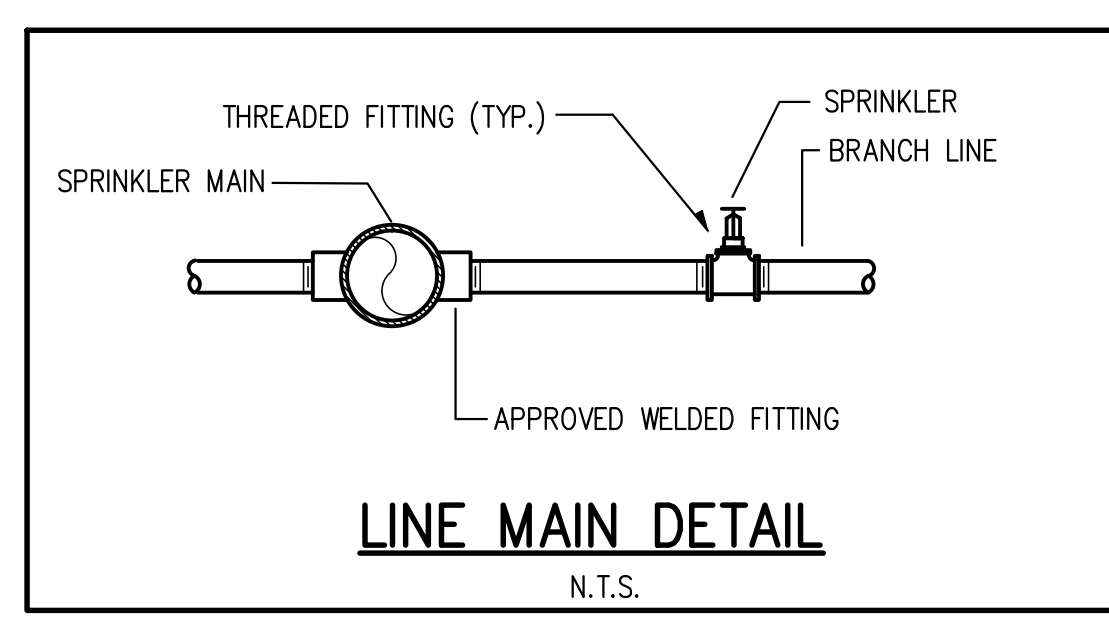
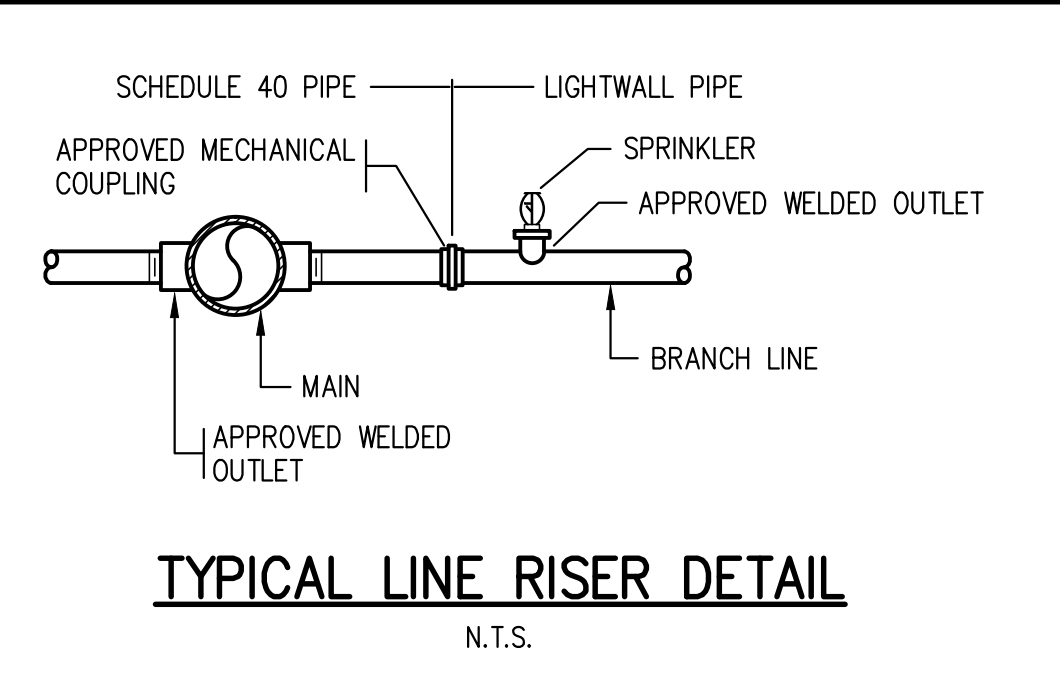
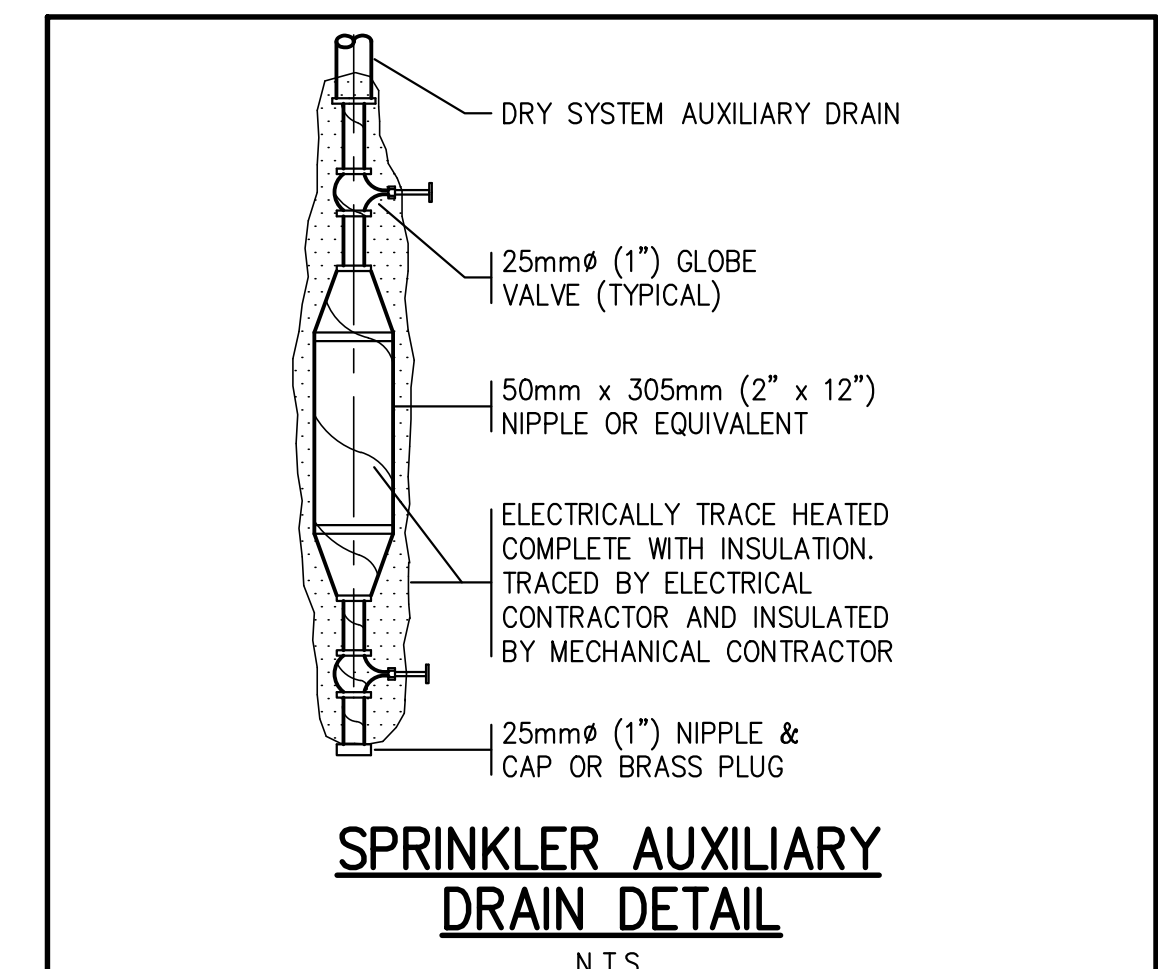
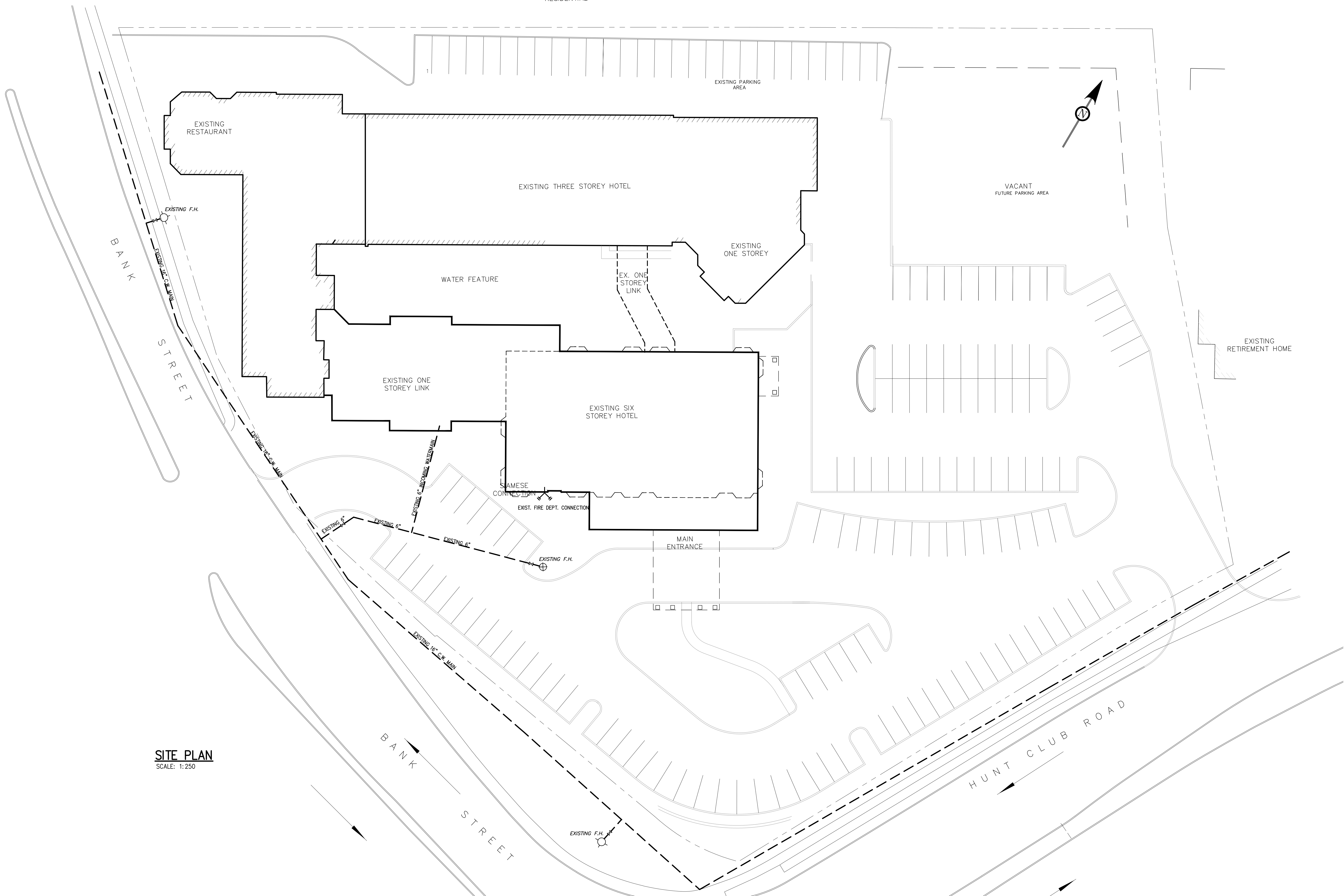
EXISTING RESIDENTIAL

**NOTES:**  
 SPRINKLER ARE NOT REQUIRED IN CLOTHES CLOSETS, LINEN CLOSETS, AND PANTRIES WITH DWELLING UNITS IN HOTELS AND MOTELS WHERE THE AREA OF THE SPACE DOES NOT EXCEED 24FT, THE LEAST DIMENSION DOES NOT EXCEED 3FT. AND THE WALLS AND CEILING ARE SURFACED WITH NON-COMBUSTIBLE OR LIMITED-COMBUSTIBLE MATERIALS ACCORDING TO N.F.P.A. SECTION 8.15.8.2



SEISMIC DESIGN SHOP DRAWINGS WILL BE PROVIDED BY FIRE PROTECTION CONTRACTOR AND TO THE REQUIREMENT OF N.F.P.A. STANDARD, THE ONTARIO BUILDING CODE, AND CERTIFIED BY A PROFESSIONAL ENGINEER.

FIRE PROTECTION CONTRACTOR TO INCLUDE FOR ALL SEISMIC SUPPORTS AND LABOUR.



DATE	REVISION	DESCRIPTION	BY
13 MAY 2016	2	REVISED STANDPIPE FEED FROM THIRD FLOOR AS DISCUSSED	A.R.
25 NOV. 2015	1	COURTYARD SYSTEM REVISED TO DRY SYSTEM	A.R.
26 MAY. 2015	-	REVISED AS PER OWNER AND ARCHITECT'S COMMENTS	A.R.
10 APR. 2015	-	RE-ISSUED FOR REVIEW	D.A.
09 FEB. 2015	-	ISSUED FOR REVIEW	D.A.

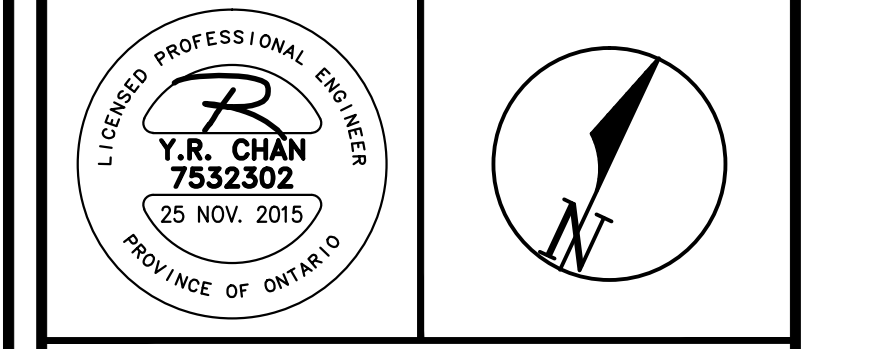
MARK VOID ALL PRINTS DATED PRIOR TO LATEST DATE ABOVE.

**REVISIONS**

CONTRACTOR MUST CHECK AND VERIFY ALL DIMENSIONS AND CONDITIONS ON THE JOB AND REPORT DISCREPANCIES TO THE ENGINEERS BEFORE PROCEEDING WITH THE WORK.

THIS DRAWING IS THE PROPERTY OF THE ENGINEERS AND MUST BE RETURNED UPON REQUEST OR AT COMPLETION OF THE WORK.

DRAWINGS ARE NOT TO BE SCALED



**novus**  
 Fire Protection Consulting Inc.  
 110 Woodbine Downs Blvd., Unit 48, Toronto, Ontario M8W 5S6  
 Tel: 416-646-6226 www.novusfire.com Fax: 416-646-6228

**SOUTHWAY HOTEL**  
 2431 BANK STREET  
 OTTAWA, ONTARIO

**SOUTHWAY HOTEL**  
 2431 BANK STREET  
 OTTAWA, ONTARIO

**SITE PLAN AND EXISTING FIRE PROTECTION SYSTEM DIAGRAM**

DATE	PROJECT NUMBER	DRAWING NUMBER
DECEMBER 2014	14-079	SP1 OF 7

B.Y. MICHAELIS  
 PLOT SCALE: 1:1  
 PLOT DATE: 5/16/2016 5:37 PM