



R.W. TOMLINSON - NEW HEAD OFFICE

TAL-CO Building Innovations
1341-2 Coker Street
Greely, Ontario K4P 1A1
Tel: 613-821-3959
Fax: 613-821-2938

Issue date: 26-Aug-16
Revision date: N/A
Revision #: N/A

CLARIFICATION #5

The following modifications and clarifications are to be accounted for when tendering on this potential contract. As well, when entering into the Form of Agreement to do the work, they shall become a part thereof.

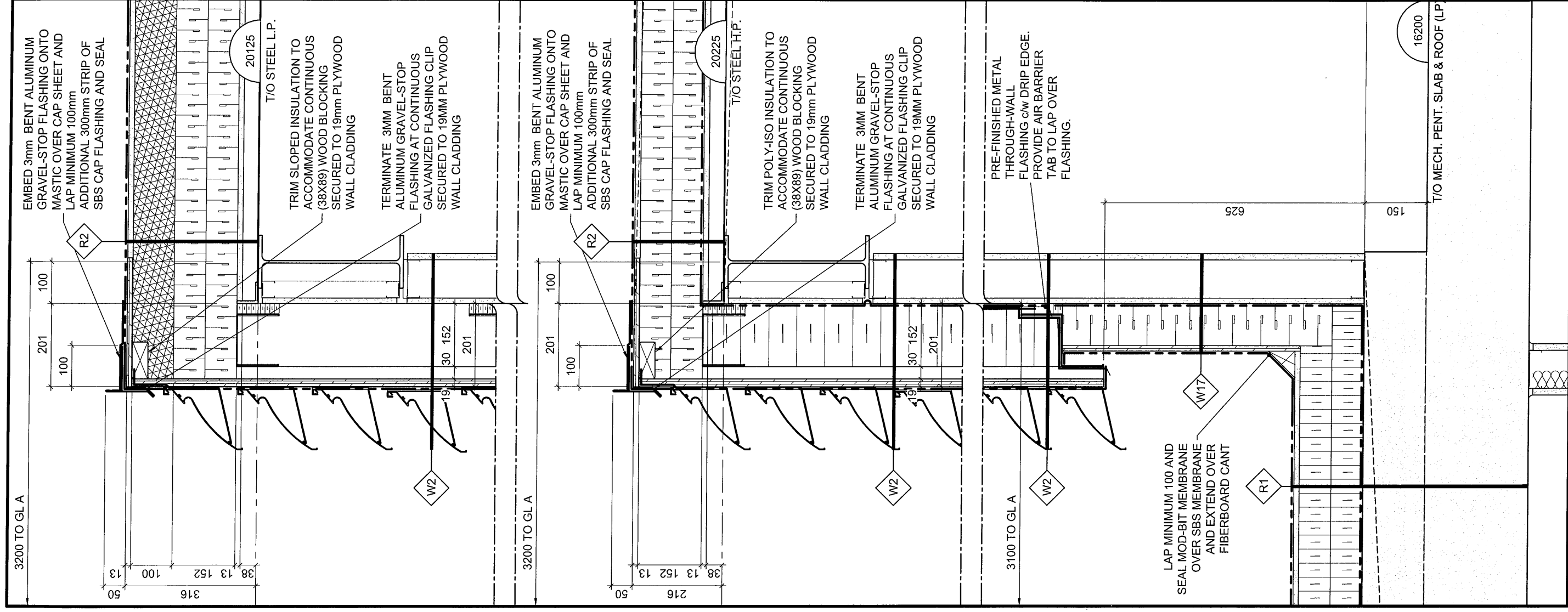
Instruction/Clarifications:

Please be advised that Clarification #5 has been issued for the above-mentioned project, as per the details below.

1. Roofing Tender (Lot 1F) Closing Date has been **extended to Tuesday August 30th, at 3:00PM**
2. Refer to: a) Revised Detail 2-A601-Louvered Mech. Pent. Wall Detail,
b) Revised A115 – Mechanical Penthouse Slab Edge Plan (Plot Date 26-Aug-16)
c) Revised Details 10-A602 – Chiller Enclosure Detail and 11-A602-Chiller Support Detail
3. Exclude all 3mm aluminum parapet capping (by others). Aluminum gravel stop flashing to be included.
4. Provide optional price for gravel stop flashing at Mechanical Penthouse roof to be 24 gauge steel.
5. Provide optional price for parapet capping of test facility and link to be 24 gauge steel (by this trade).
6. Refer to Details 5 and 6 on A-602, remove 2-ply mod bit membrane from W3 assembly and replace with EPDM membrane.
7. Refer to Details 5 and 6 on A-602, provide optional price to replace EPDM & MBM with hot rubber (HARA) (submit spec. for approval with tender).
8. Refer to drawings A100 and A106, allow for sloped insulation in hatched area.
9. Where damp proofing, drainage board and insulation are shown to extend to footings, assume footings to be -1800mm from finished floor to U.S.F.

For questions or further information, please contact the office by e-mail at info@tal-co.com.

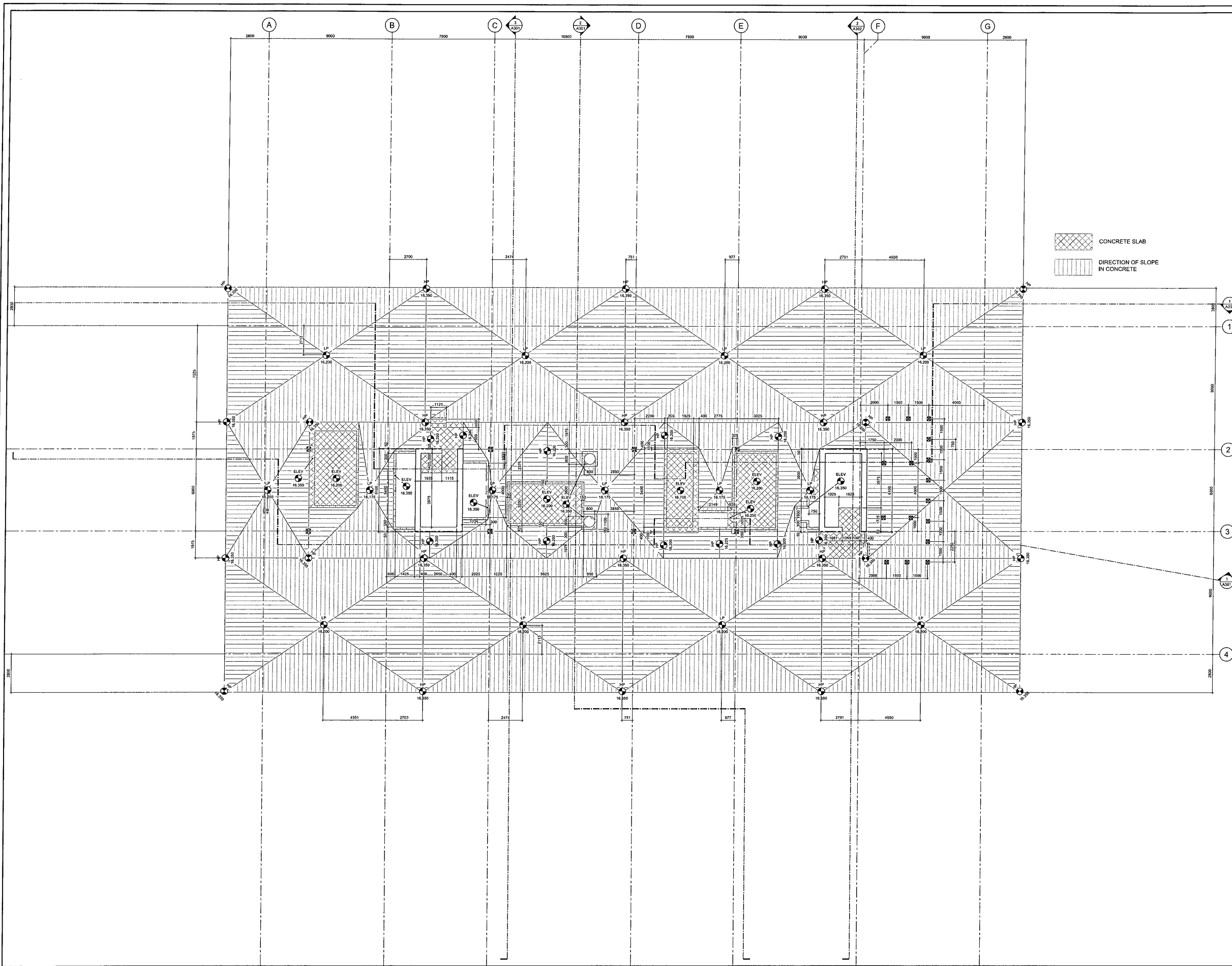
End of Clarification No. 5



2 LOUVERED MECH. PENT. WALL DETAIL

A601

SCALE = 1:10

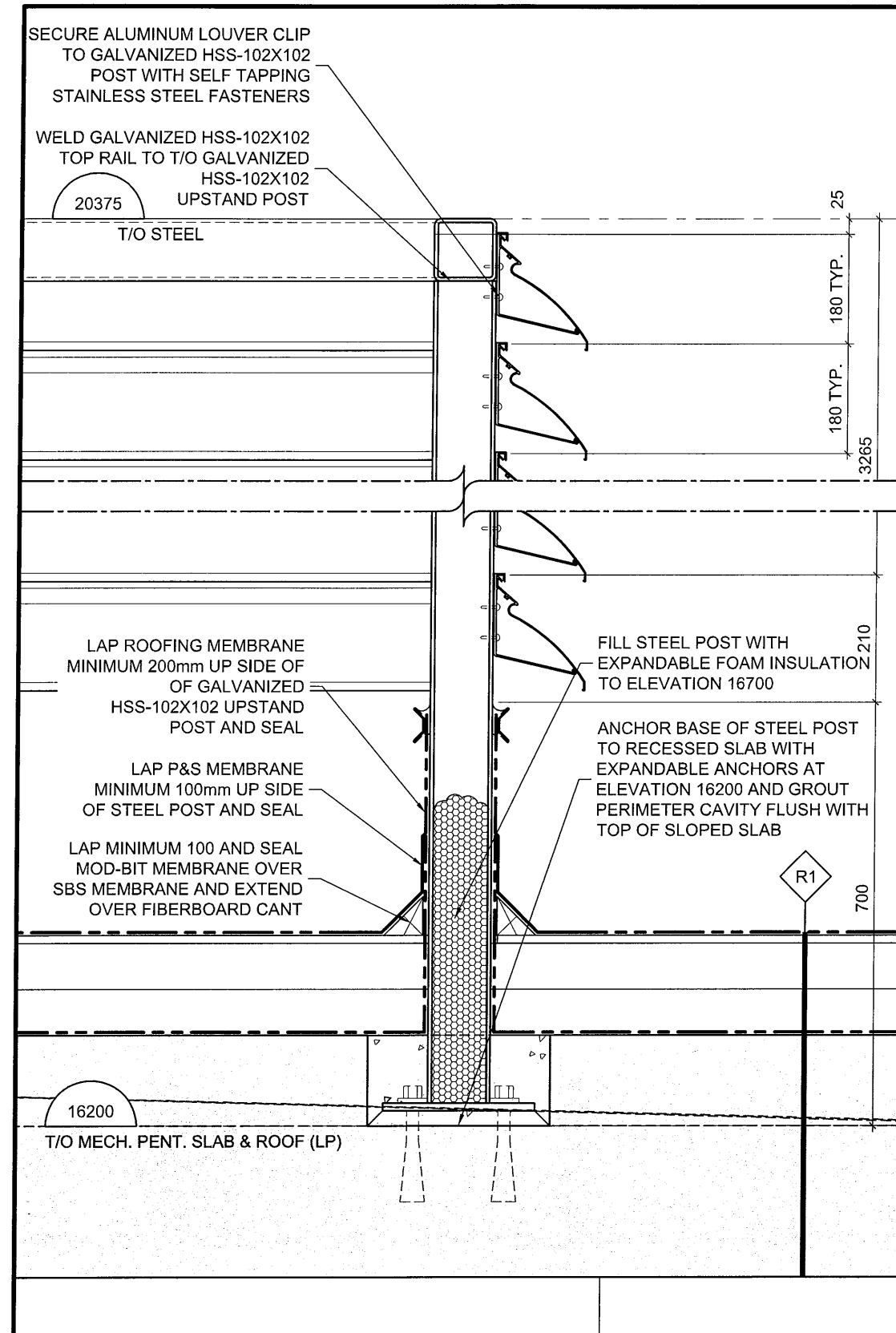


GENERAL NOTES

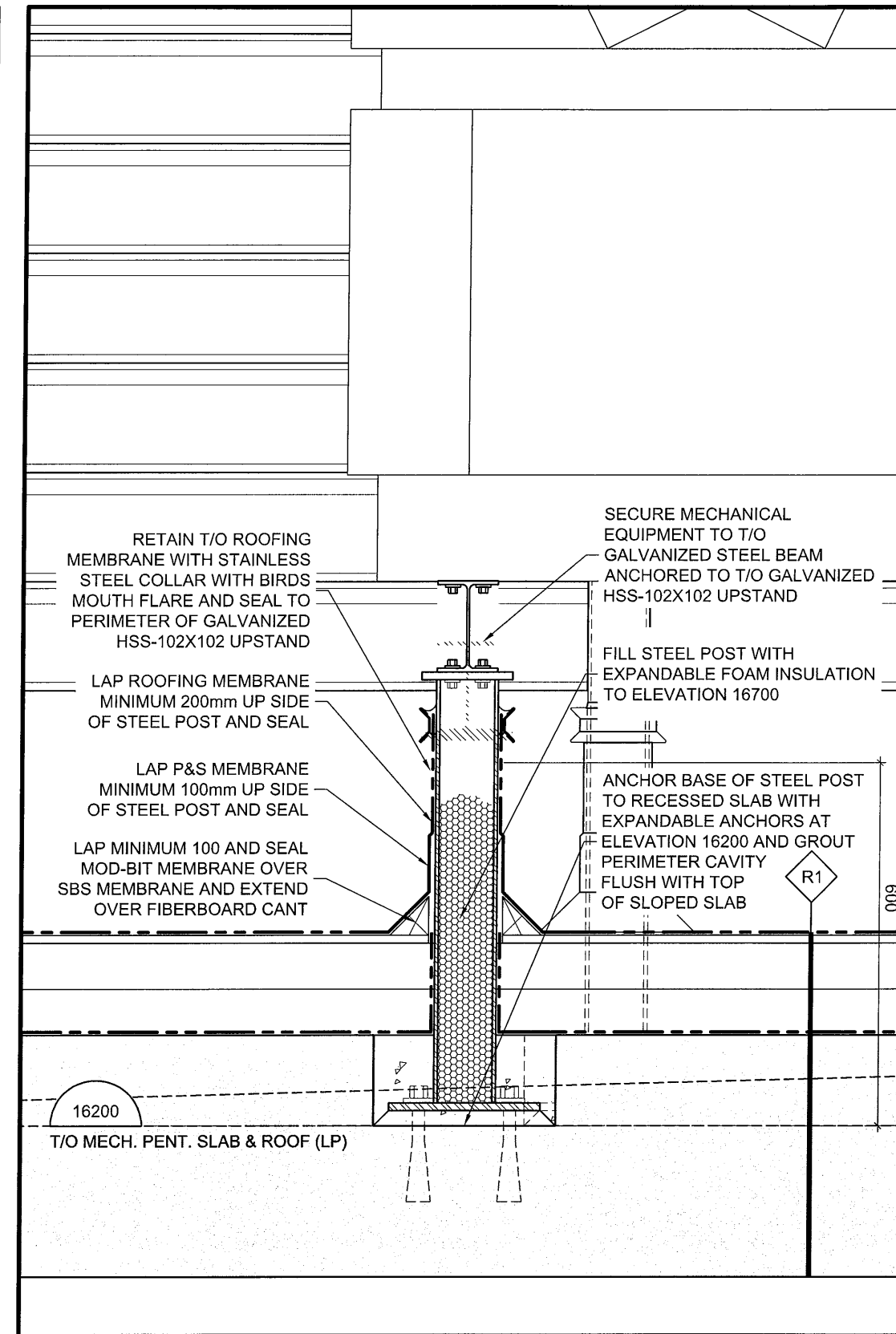
- A THE CONTRACTOR SHALL CHECK AND VERIFY ALL DIMENSIONS ON SITE AND REPORT ALL DISCREPANCIES TO THE ARCHITECT.
- B DO NOT SCALE DRAWINGS.
- C ALL WORK SHALL COMPLY WITH THE ONTARIO BUILDING CODE AND THE REQUIREMENTS OF ALL AUTHORITIES HAVING JURISDICTION.
- D THIS DRAWING IS THE EXCLUSIVE PROPERTY OF CHRISTOPHER SIMMONDS ARCHITECT INC. COPYRIGHT RESERVED.

02	BUILDING PERMIT	08/05/2016
01	FOUNDATION PERMIT	05/31/2016
REV.	ISSUED FOR	MM/DD/YYYY
ARCHITECT'S SEAL:	PROJECT NORTH:	
TOMLINSON <small>FOUNDED IN 1978 WITH OFFICES IN VARIOUS CITIES</small>		
 THE ANNEX / 450 COLLEGE ST. OTTAWA ON K1R 4A1 613.567.7884 PHONE / 613.567.7828 FAX csa@csaarch.com		
PROJECT: TOMLINSON NEW BUILDING		
DRAWING TITLE: MECHANICAL PENTHOUSE SLAB EDGE PLAN		
DATE:	10/8/2015	DRAWING No:
SCALE:	AS INDICATED	
DRAWN BY:	JK	
JOB No:	574-15	

1 A115 MECHANICAL PENTHOUSE SLAB EDGE PLAN SCALE: 1:100



10 CHILLER ENCLOSURE DETAIL
A602 SCALE = 1:10



11 CHILLER SUPPORT DETAIL
A602 SCALE = 1:10