



TAL-CO SUPPLEMENTAL INSTRUCTION #04			
Project Name:	RW TOMLINSON - NEW HEAD OFFICE		
Project Location:	100 Nortel Drive, Ottawa, Ontario		
ARCH. SI #:	A-112,302,502,604	Issued By:	Chris Simpson
STRUC. SI #:	N/A	Date Issued:	September 23, 2016
MECH. SI #:	N/A	Revision #:	N/A
ELEC. SI #:	N/A	Revision Date:	N/A

Supplemental Instructions are issued by the Construction Manager to record a clarification or revision to the previously issued Contact Documentation as reflected by the attached information prepared by the identified Professionals.

The Construction Manager shall review the Supplemental Instruction and the attached information and issue to the affected Trade Contractors.

Notify Tal-Co within 5 days of receipt, if the attached documents will require a change to Contract Price or Schedule.

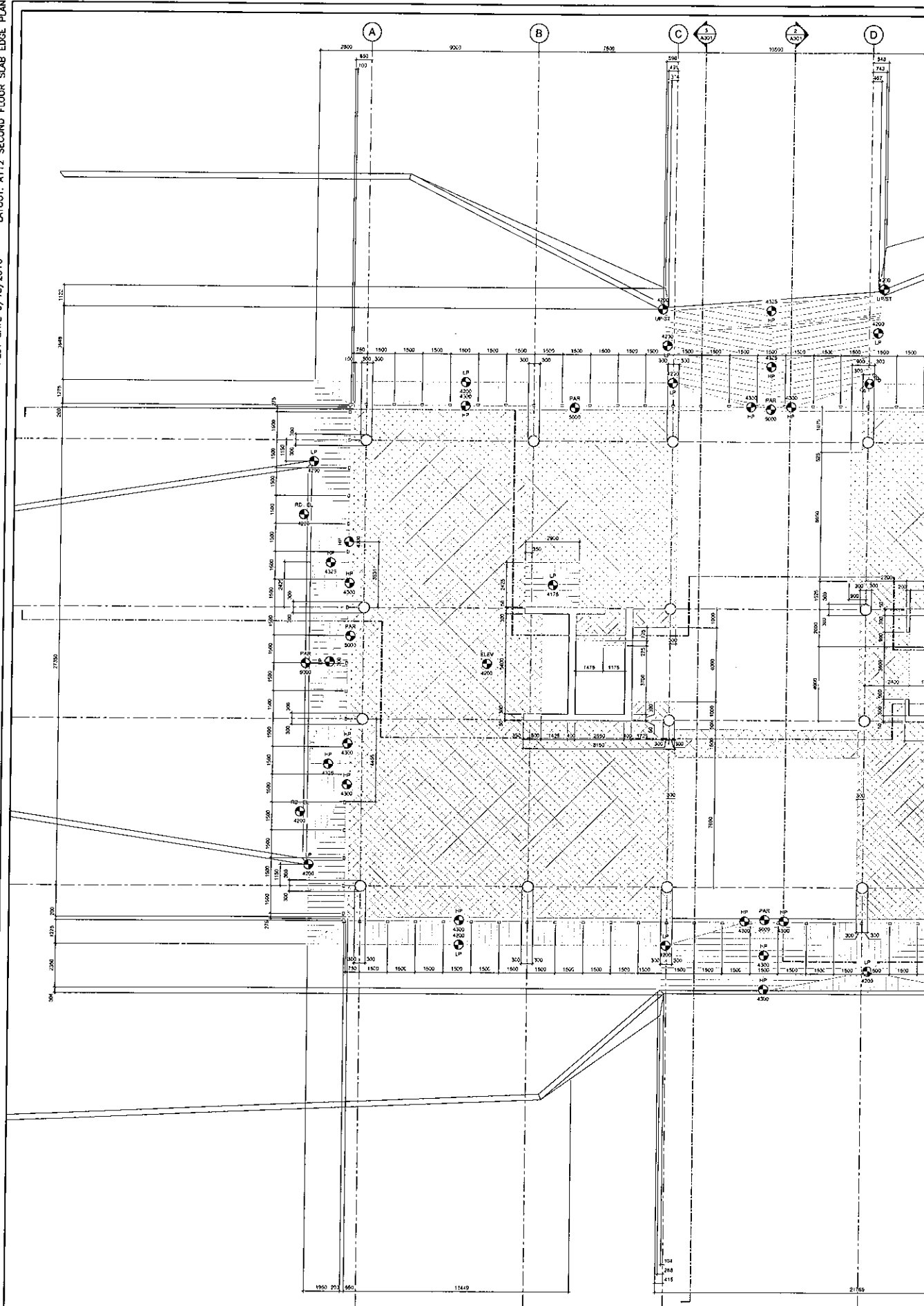
Title: Revised dimensions for cantilevered boardroom

Reference: Architectural/ Structural Drawings

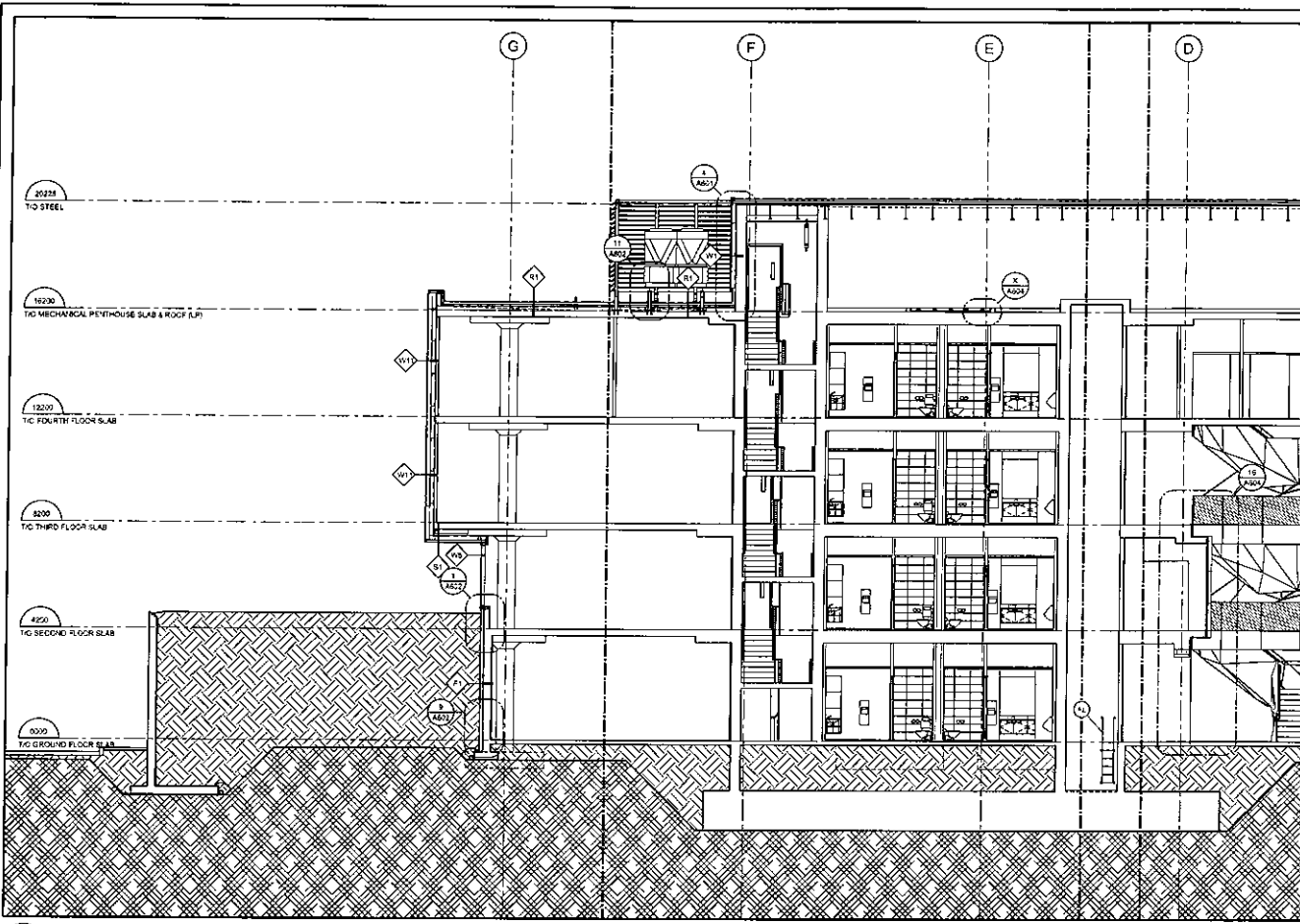
Attachments: A-112 (Plot Date 9,13,2016), A-302 (Plot Date 9,13,2016), A-502 (Plot Date 9,13,2016) A-604 (Plot Date 9,13,2016)

Description of the Work: Revised dimensions/ details for cantelevered slab area Grid D, 1 to 2 (approximate)

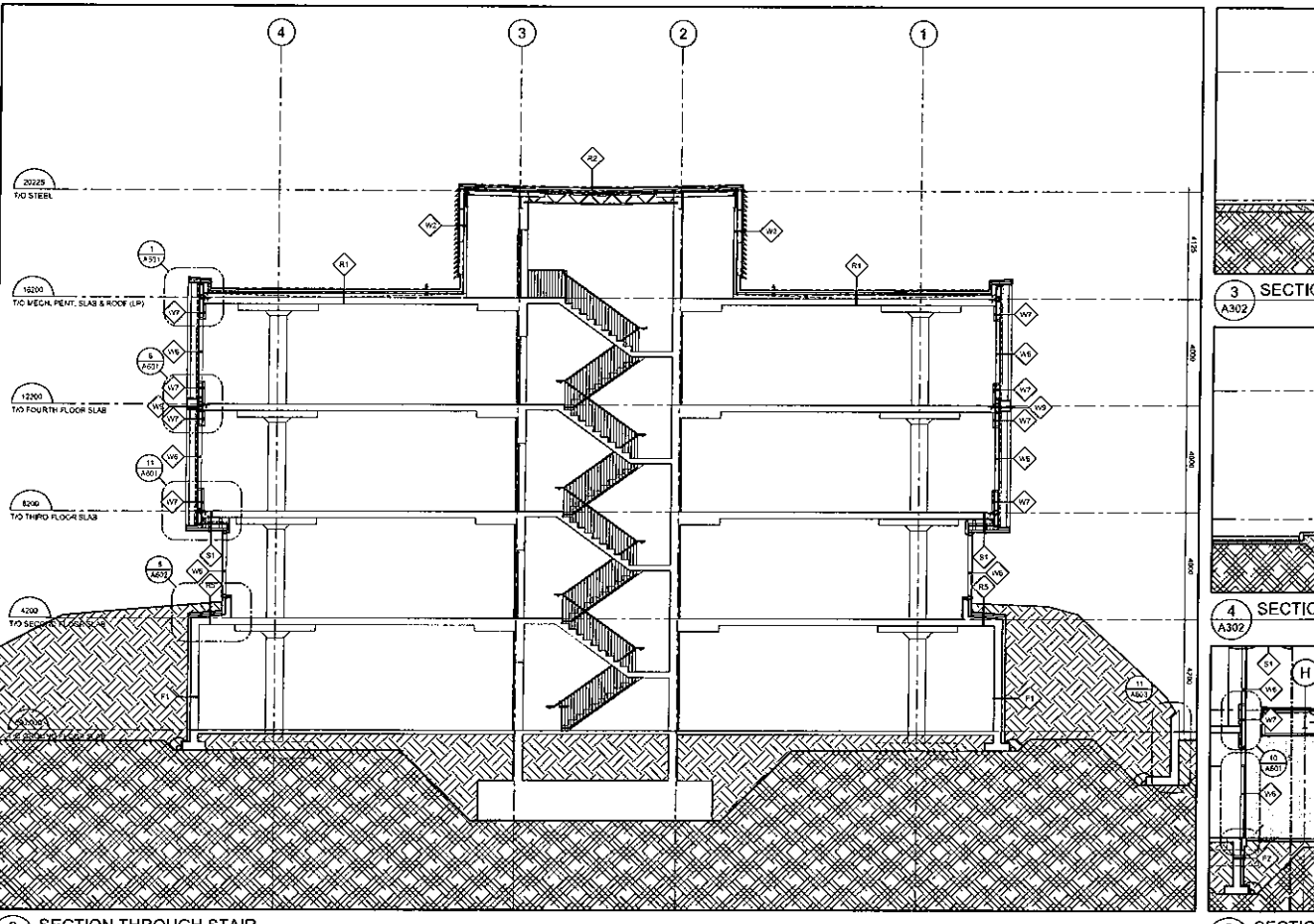
Reason: Architectural Clarifications/ Revisions



1 SECOND FLOOR SLAB EDGE PLAN
SCALE=1/100



1 LONG SECTION THROUGH ATRIUM AND CORE SCALE=1/16"

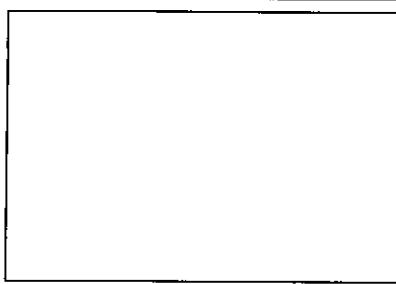


2 SECTION THROUGH STAIR SCALE=1/16"

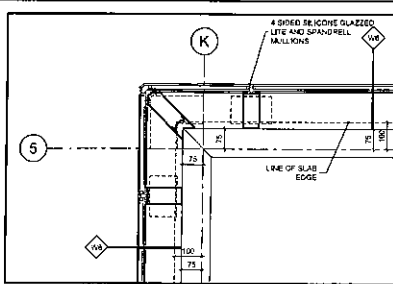
3 SECTION A302

4 SECTION A302

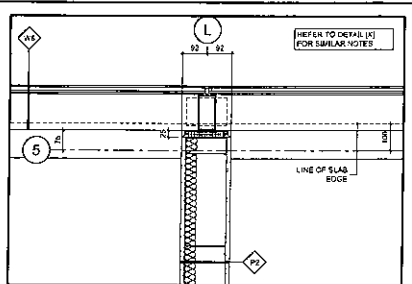
5 SECTION A302



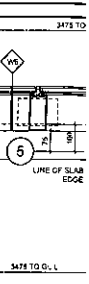
1 RESERVED
SCALE #1/10
A502



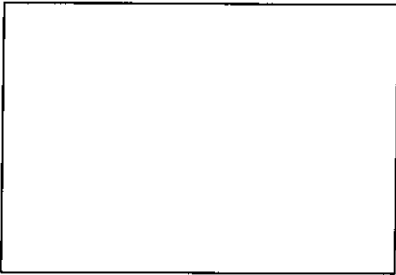
2 TEST FACILITY CURTAINWALL COR. DET.
SCALE #1/10
A502



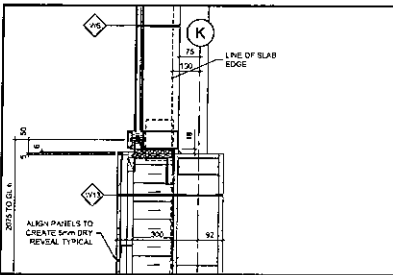
3 (W6) / (P2) TRANSITION DETAIL
SCALE #1/10
A502



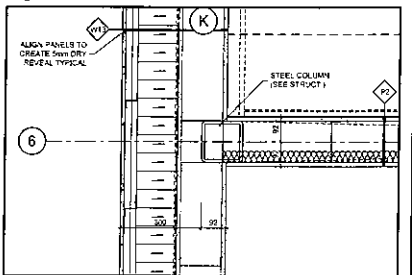
4 (W6) / (P2) TRANSITION DETAIL
SCALE #1/10
A502



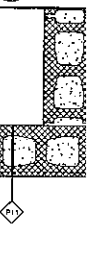
7 RESERVED
SCALE #1/10
A502



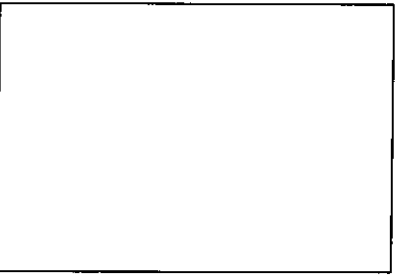
8 (W6) / (W13) TRANSITION DETAIL
SCALE #1/10
A502



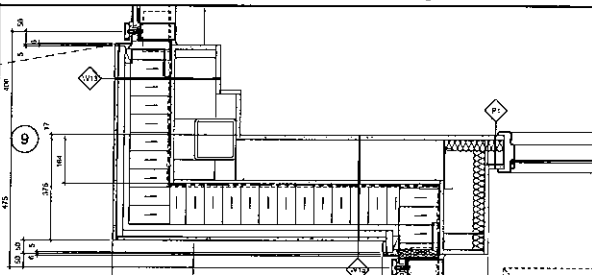
9 (W13) COLUMN / BRACE FRAME DETAIL
SCALE #1/10
A502



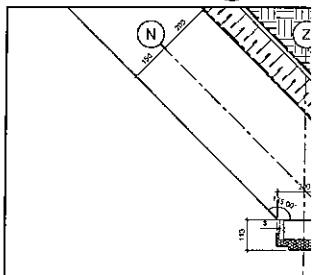
10 (P2) TRANSITION DETAIL
SCALE #1/10
A502



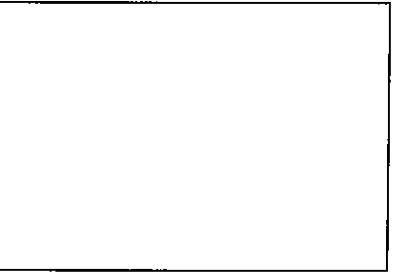
11 RESERVED
SCALE #1/10
A502



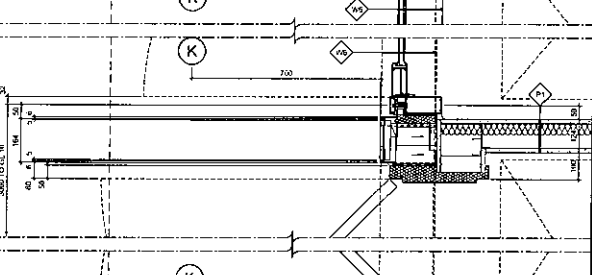
18 RECESSED TEST FACILITY ENTRANCE DETAIL
SCALE #1/10
A502



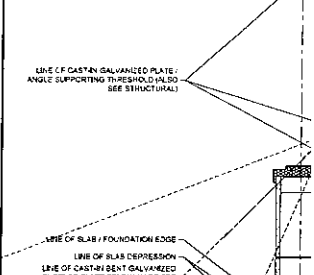
14 (W13) / (F1) / (F2) TRANS. & INSULATION DETAIL
SCALE #1/10
A502



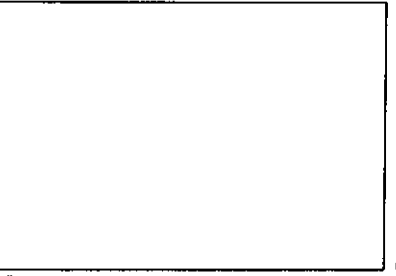
15 RESERVED
SCALE #1/10
A502



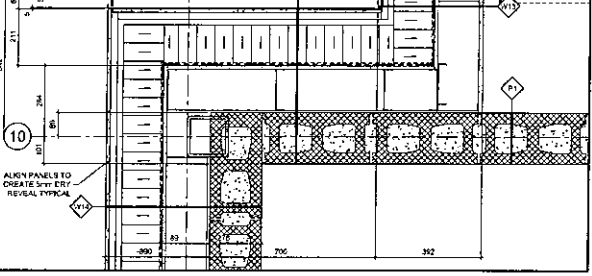
10 (P2) TRANSITION DETAIL
SCALE #1/10
A502



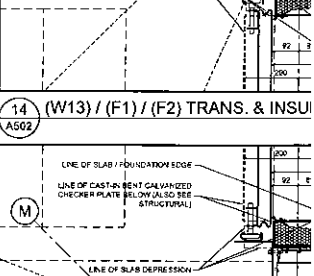
14 (W13) / (F1) / (F2) TRANS. & INSULATION DETAIL
SCALE #1/10
A502



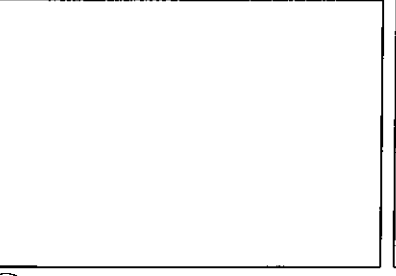
17 RESERVED
SCALE #1/10
A502



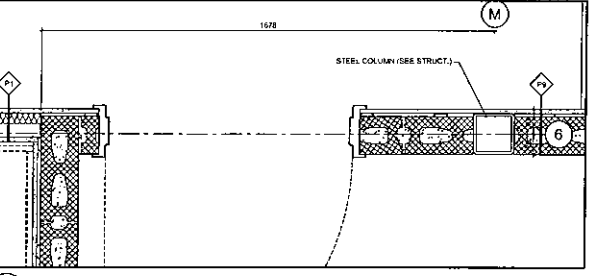
18 RECESSED TEST FACILITY ENTRANCE DETAIL
SCALE #1/10
A502



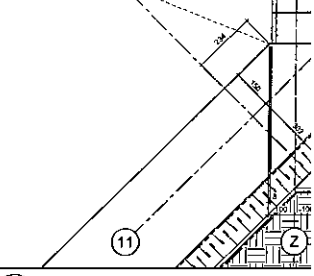
14 (W13) / (F1) / (F2) TRANS. & INSULATION DETAIL
SCALE #1/10
A502



21 RESERVED
SCALE #1/10
A502



22 (P3) COLUMN / DOOR JAMB DETAIL
SCALE #1/10
A502



23 (W13) / (F1) / (F2) TRANSITION AN DETAIL
SCALE #1/10
A502

