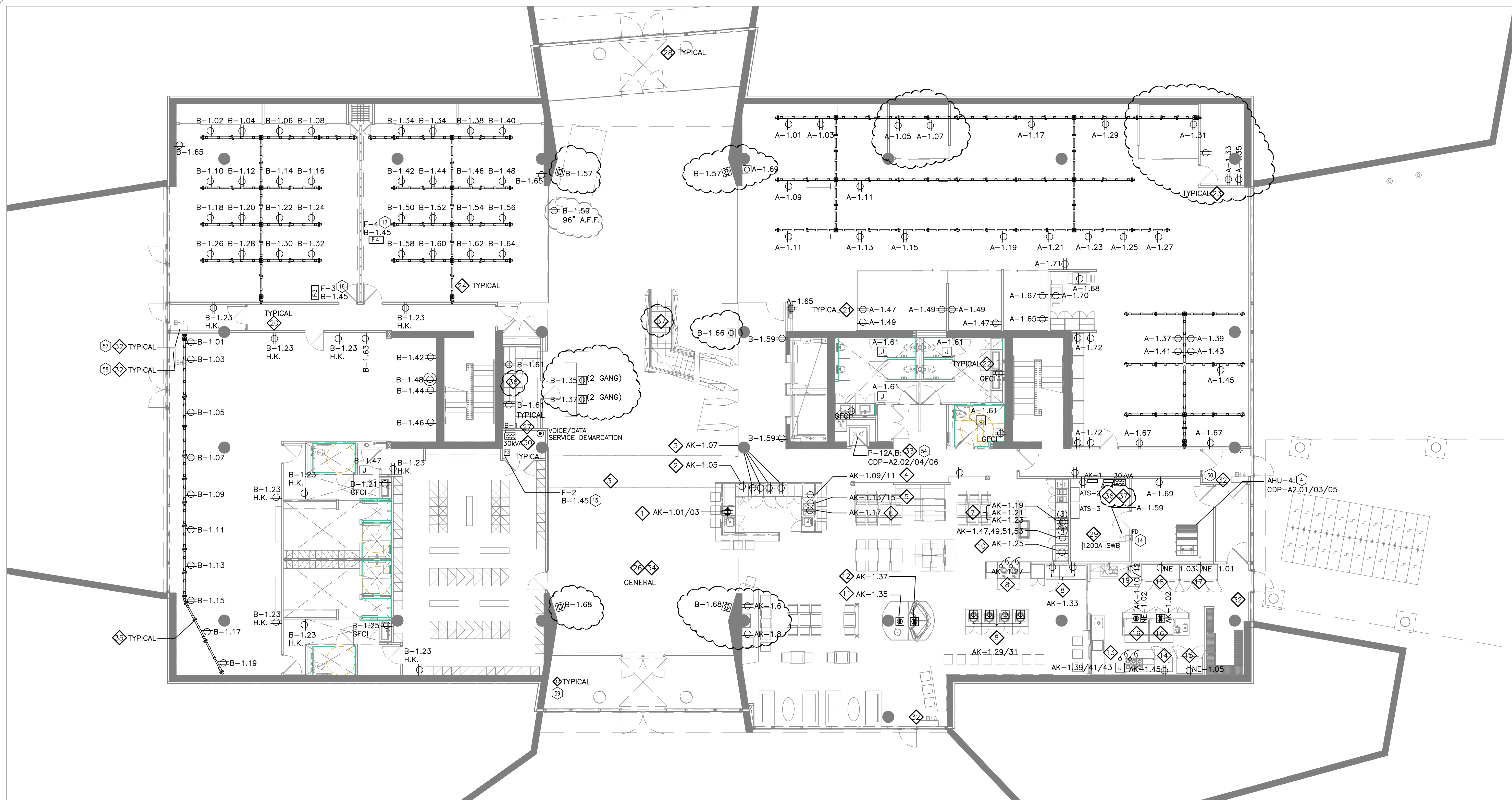


An exact copy of all working documents including, without limitation, the original of the present document or plan is kept on file by J.R.P. Engineering. Any modification carried out to this document or plan or to accompanying documents without written authorization by the engineer is prohibited.

Authorized modifications must be signed and sealed by an engineer and this engineer will be completely responsible for these modifications. J.R.P. Engineering is not and will not be responsible for the consequences of these modifications or for modifications carried out without its consent.



**1 GROUND FLOOR — ELECTRICAL DISTRIBUTION**  
E201 SCALE 1:100

- DRAWING NOTES:**
- 1 BEVERAGE BLENDER — PROVIDE NEW SPLIT DUPLEX RECEPTACLE (5-20R) C/W ALL CONDUIT, WIRING AND ASSOCIATED HARDWARE.
  - 2 ICE-MAKER DISPENSER — PROVIDE NEW DUPLEX RECEPTACLE (5-15R) C/W ALL CONDUIT, WIRING AND ASSOCIATED HARDWARE.
  - 3 CITRUS JUICER (1), UNDERCOUNTER FRIGDES (2) AND FREEZER (1) — PROVIDE (4) NEW DUPLEX RECEPTACLE (5-20R), ONE RECEPTACLE IS MOUNTED ABOVE COUNTER FOR THE CITRUS JUICER C/W ALL CONDUIT, WIRING AND ASSOCIATED HARDWARE.
  - 4 ESPRESSO MACHINE NO.1 — PROVIDE (1) NEW SINGLE, 2 POLE, 3 WIRE RECEPTACLE (6-30R), RECEPTACLE IS MOUNTED ABOVE COUNTER FOR C/W ALL CONDUIT, WIRING AND ASSOCIATED HARDWARE.
  - 5 ESPRESSO MACHINE NO.2 — PROVIDE (1) NEW SINGLE, 2 POLE, 3 WIRE RECEPTACLE (6-30R), RECEPTACLE IS MOUNTED ABOVE COUNTER FOR C/W ALL CONDUIT, WIRING AND ASSOCIATED HARDWARE.
  - 6 DISHWASHER — PROVIDE NEW DUPLEX RECEPTACLE (5-20R) C/W ALL CONDUIT, WIRING AND ASSOCIATED HARDWARE.
  - 7 MICROWAVE OVENS (3) — PROVIDE (3) NEW DUPLEX RECEPTACLES (5-20R) C/W ALL CONDUIT, WIRING AND ASSOCIATED HARDWARE. INSTALL STACKED ONE ABOVE THE OTHER TO SUIT MILLWORK DESIGN.
  - 8 BUFFET/CAFFETERIA HOT COLD COMBO — PROVIDE (4) NEW SINGLE, 2 POLE, 3 WIRE RECEPTACLE (6-30R), RECEPTACLES. BOXES TO BE FLUSH MOUNTED IN SLAB C/W ALL CONDUIT, WIRING, SLAB BOXES AND ASSOCIATED HARDWARE.
  - 9 DISPLAY FRIGDES — PROVIDE (2) NEW DUPLEX RECEPTACLES (5-20R) C/W ALL CONDUIT, WIRING AND ASSOCIATED HARDWARE.
  - 10 DOMESTIC REFRIGERATOR — PROVIDE (1) NEW DUPLEX RECEPTACLES (5-20R) C/W ALL CONDUIT, WIRING AND ASSOCIATED HARDWARE.
  - 11 RICE COOKER — PROVIDE (1) NEW DUPLEX RECEPTACLE (5-20R) C/W ALL CONDUIT, WIRING AND ASSOCIATED HARDWARE.
  - 12 DROP-IN COOLER — PROVIDE (1) NEW DUPLEX RECEPTACLES (5-15R) C/W ALL CONDUIT, WIRING AND ASSOCIATED HARDWARE.
  - 13 EXHAUST HOOD, FIRE SUPPRESSION SYSTEM — PROVIDE DIRECT CONNECTIONS TO EXHAUST HOOD 120V, 15A CIRCUITS TO FEED (2) LOCATIONS AT THE HOOD, (1) CONNECTION TO THE FIRE SUPPRESSION SYSTEM. PROVIDE DISCONNECTING MEANS. (1) COMMON JIB FOR CCTs 39/41/43 RELAYS AS REQUIRED AND INTEGRATION TO FIRE ALARM SYSTEM AS REQUIRED C/W ALL CONDUIT, WIRING AND ASSOCIATED HARDWARE. SUBMIT FINAL CONNECTION/FIRE ALARM INTEGRATION TO ENGINEER FOR APPROVAL PRIOR TO FINAL INSTALLATION.
  - 14 OVEN STEAMER — PROVIDE (1) NEW DUPLEX RECEPTACLES (5-15R) C/W ALL CONDUIT, WIRING AND ASSOCIATED HARDWARE.
  - 15 REACH IN REFRIGERATOR — PROVIDE (1) NEW DUPLEX RECEPTACLES (5-15R) C/W ALL CONDUIT, WIRING AND ASSOCIATED HARDWARE.
  - 16 UNDER COUNTER REFRIGERATORS — PROVIDE (2) NEW DUPLEX RECEPTACLE (5-15R). RECEPTACLE COVERS SUITABLE FOR FLOOR MOUNTING IN KITCHEN ENVIRONMENT, CASKETED, WATE. BOXES TO BE FLUSH MOUNTED IN SLAB C/W ALL CONDUIT, WIRING, SLAB BOXES, KITCHEN AND ASSOCIATED HARDWARE.
  - 17 REACH IN REFRIGERATOR — PROVIDE (1) NEW DUPLEX RECEPTACLES (5-15R) C/W ALL CONDUIT, WIRING AND ASSOCIATED HARDWARE.
  - 18 REACH IN FREEZER — PROVIDE (1) NEW DUPLEX RECEPTACLES (5-15R) C/W ALL CONDUIT, WIRING AND ASSOCIATED HARDWARE.
  - 19 WAREWASHER — PROVIDE (1) NEW SINGLE, 2 POLE, 3 WIRE RECEPTACLE (6-40R), RECEPTACLE. C/W ALL CONDUIT, WIRING, SLAB BOXES AND ASSOCIATED.
  - 20 PROVIDE DUPLEX RECEPTACLE (5-15R) C/W ALL CONDUIT, WIRING AND ASSOCIATED HARDWARE.
  - 21 PROVIDE DEDICATED DUPLEX RECEPTACLE (5-15R) C/W ALL CONDUIT, WIRING AND ASSOCIATED HARDWARE.
  - 22 PROVIDE GFCI DUPLEX RECEPTACLE (5-15R) C/W ALL CONDUIT, WIRING AND ASSOCIATED HARDWARE.
  - 23 PROVIDE DEDICATED DUPLEX RECEPTACLE (5-20R) FOR NEW PRINTER C/W ALL CONDUIT, WIRING AND ASSOCIATED HARDWARE.
  - 24 PROVIDE WALKER DUCT SYSTEM AS PER DETAILS/STANDARDS. REFER TYPICAL DETAILS FOR FURTHER INFORMATION.
  - 25 UNUSED
  - 26 PROVIDE SIX (6) CONTROLS TRANSFORMER FOR ADDITIONAL VAV BOXES (LOW VOLTAGE WIRING BY OTHERS) C/W ALL CONDUIT, WIRING AND ASSOCIATED HARDWARE. MOUNT TO UNDERSIDE OF SLAB. LOCATIONS NOT SHOWN.
  - 27 PROVIDE DISTRIBUTION PANEL, REFER TO SLD AND PANEL SCHEDULE FOR FURTHER DETAILS.
  - 28 PROVIDE SECURE DOOR AS PER SECURE DOOR TYPICAL DETAIL.
  - 29 PROVIDE ELECTRICAL DISTRIBUTION AS PER SLD, C/W ALL CONDUIT, WIRING AND ASSOCIATED HARDWARE.
  - 30 30KVA TRANSFORMER TO SUSPENDED FROM BUILDING STRUCTURE. STRUCTURAL AND SEISMIC SUPPORT SHALL BE DESIGNED BY STRUCTURAL ENGINEER AND SUPPLIED BY GENERAL CONTRACTOR. MOUNT TRANSFORMER AS HIGH AS POSSIBLE.
  - 31 PROVIDE WIRING ALL ASSOCIATED CONDUIT AND WIRING ASSOCIATED WITH FINAL CONNECTIONS REQUIRED TO SERVICE DUCTLESS SPLIT SYSTEM UNITS TYPICAL TO ALL FLOORS (ELECTRICAL/IT CLOSETS) MAIN FEEDER DIRECT TO EVAPORATOR COIL IN IT CLOSET, THEN FEEDER UP TO CONDENSER LOCATED ON THE ROOF. COORDINATE EXACT WIRING REQUIREMENTS WITH FINAL UNIT SELECTION.

- 32 PROVIDE 120V CIRCUIT c/w ALL ASSOCIATED CONDUIT, WIRING, FASTENERS AND HARDWARE TO ENTRANCE HEATERS. COORDINATE EXACT LOCATION WITH MECHANICAL DRAWINGS. CIRCUIT INDICATION: B-1.43. TYPICAL OF 4.
  - 33 PROVIDE WIRING DIRECTLY TO DUPLEX PUMP CONTROL PANEL. COORDINATE EXACT DETAILS WITH MECHANICAL CONTRACTOR AND MANUFACTURERS INSTALLATION DRAWINGS. PROVIDE ALL ASSOCIATED CONDUIT AND WIRING REQUIRED FOR A COMPLETE AND OPERATIONAL SYSTEM.
  - 34 THE ELECTRICAL CONTRACTOR SHALL PROVIDE OPTIONS FOR AUTOMATIC CONTROL OF RECEPTACLE LOADS ON EACH FLOOR. THE CONTRACTOR MAY USE A RELAY/CONTACTOR WITH RECEPTACLE CIRCUITS RUN THROUGH IT c/w AUTOMATIC TIME CLOCK. OTHER OPTIONS MAY BE USED SUCH AS AUTOMATICALLY CONTROLLED RECEPTACLES.
- AUTOMATIC RECEPTACLE CONTROL SECTION 130.5(D):**
- CONTROLLED RECEPTACLES THAT AUTOMATICALLY SHUT-OFF ARE REQUIRED IN PRIVATE OFFICES, OPEN OFFICES, LOBBIES, COPY ROOMS, KITCHENETTES, AND CONFERENCE ROOMS.
- AT LEAST ONE CONTROLLED RECEPTACLE MUST BE WITHIN 6 FEET OF AN UNCONTROLLED RECEPTACLE; THIS CAN BE ACCOMPLISHED BY SWITCHING ONE OF THE TWO OUTLETS IN EACH RECEPTACLE
- CONTROLLED RECEPTACLES NEED TO BE MARKED TO DIFFERENTIATE THEM FROM UNCONTROLLED RECEPTACLE
- ALLOW FOR ALL ASSOCIATED CONDUIT, WIRE HARDWARE, FASTENERS, FITTINGS, RELAYS, WIRELESS DEVICES REQUIRED FOR A COMPLETE AND OPERATIONAL SYSTEM. TYPICAL NOTE, 4 FLOORS.
- 35 PROVIDE WALKER DUCT SYSTEM AS INDICATED IN TYPICAL WALKER DUCT DETAIL PROVIDED IN DETAIL 3/E304.
  - 36 PROVIDE 27mm CONDUITS STUBBED UP UNDER MAIN STAIRWELL, IN MAIL ROOM, AND IN THE ELECTRICAL ROOM FOR WATER FEATURE. COORDINATE EXACT REQUIREMENTS WITH GENERAL CONTRACTOR.
  - 37 STOP DUCT BANKS AT FOUNDATION WALL AND RUN CONDUITS INTO ELECTRICAL ROOM UNDER FLOOR SLAB. USE MINIMUM RPVC WHERE NO DUCT BANKS ARE PRESENT FOR UNDERGROUND WORK.

No	DESCRIPTION	DATE
2	ISSUED FOR ARCH. REVISIONS, & FOUNDATION/ SLAB COORDINATION	OCT. 01 2016
1	ISSUED FOR BUILDING PRICING	AUGUST 29 2016
0	ISSUED FOR BUILDING PERMIT	AUGUST 5 2016

**REVISIONS**

client:	<b>TOMLINSON</b> 5597 POWER RD OTTAWA, ON K1G 3N4
project:	<b>TOMLINSON</b> NEW BUILDING CITIGATE, OTTAWA
drawing title:	<b>ELECTRICAL DISTRIBUTION GROUND FLOOR</b>

scale:	<b>AS SHOWN</b>	drawn by:	<b>M.G</b>
designed by:	<b>M.G</b>	reviewed by:	<b>J.R.P.</b>
approved by:	<b>J.R.P.</b>	date:	<b>APR 2016</b>

project no.:	<b>100-16L</b>	drawing no.:	<b>E-201A</b>
revision:	<b>0</b>		