



TAL-CO SUPPLEMENTAL INSTRUCTION #12			
Project Name:	RW TOMLINSON - NEW HEAD OFFICE		
Project Location:	100 Nortel Drive, Ottawa, Ontario		
ARCH. SI #:	N/A	Issued By:	Chris Simpson
STRUC. SI #:	SSI # 010	Date Issued:	October 11, 2016
MECH. SI #:	N/A	Revision #:	N/A
ELEC. SI #:	N/A	Revision Date:	N/A

Supplemental Instructions are issued by the Construction Manager to record a clarification or revision to the previously issued Contact Documentation as reflected by the attached information prepared by the identified Professionals.

The Construction Manager shall review the Supplemental Instruction and the attached information and issue to the affected Trade Contractors identifying the following course of action by the Trade Contractor.

Notify Tal-Co within 5 days of receipt, if the attached documents will require a change to Contract Price or Schedule.

**Title:** Re-bar revisions to detail 4/ S-200 at Schoeck connections.

**Reference:** Schoeck Reinforcing Drawings, S-200

**Attachments:** SSI # 010 - SK1, Schoeck Structural Design Proposal

**Description of the Work:** Provide re-inforcing in "floating" curb as per attached sketch.

**Reason:** Co-ordination with Schoeck thermal break product.

# STRUCTURAL SITE INSTRUCTION



Cleland Jardine Engineering Ltd., 580 Terry Fox Drive, Suite 200, Kanata, Ontario, K2L 4B9, FAX (613) 591-1703, Tel. (613) 591-1533

TO: TALCO Building Innovations DATE: October 11, 2016

ATTENTION: Chris Simpson EMAIL: csimpson@tal-co.com

PROJECT: Tomlinson – New Building PROJECT No.: 15-0179

ISSUED BY: Brian Johnson, P.Eng BDS PAGES (Incl this one): 2

STRUCTURAL SITE INSTRUCTION No.: 010

**Affected Drawings:** S200

**References:**

Schock reinforcing drawings for the curbs at the North and West entrances.

**Information to be Clarified:**

Revise the reinforcing in the concrete upstand curb in Section 4/S200 as per the attached sketch SSI-S10-SK1.

BUILT-UP SOIL/ROOFING  
 • MAX. DEPTH OF SOIL = 300mm  
 (REMAINING HEIGHT TO BE PROVIDED USING L.W. INSULATION)

5

SHOCK CONNECTION BARS  
 • COORDINATE LOCATIONS WITH MULLION SUPPORT ANGLES  
 • IDENTIFY INTERFERENCES ON SHOP DRAWINGS

200 CONCRETE CURB  
 c/w: 15M @ 200 HOR. CONT. HEF  
 10M @ 300 VERT. STIRRUPS  
 2-20M HOR. ADD'L T&B  
 (fc' = 35 MPa, C-1)  
 (FINAL REBAR LAYOUT TO BE DETERMINED BASED ON SHOCK CONNECTION SHOP DRAWINGS/DETAILS)

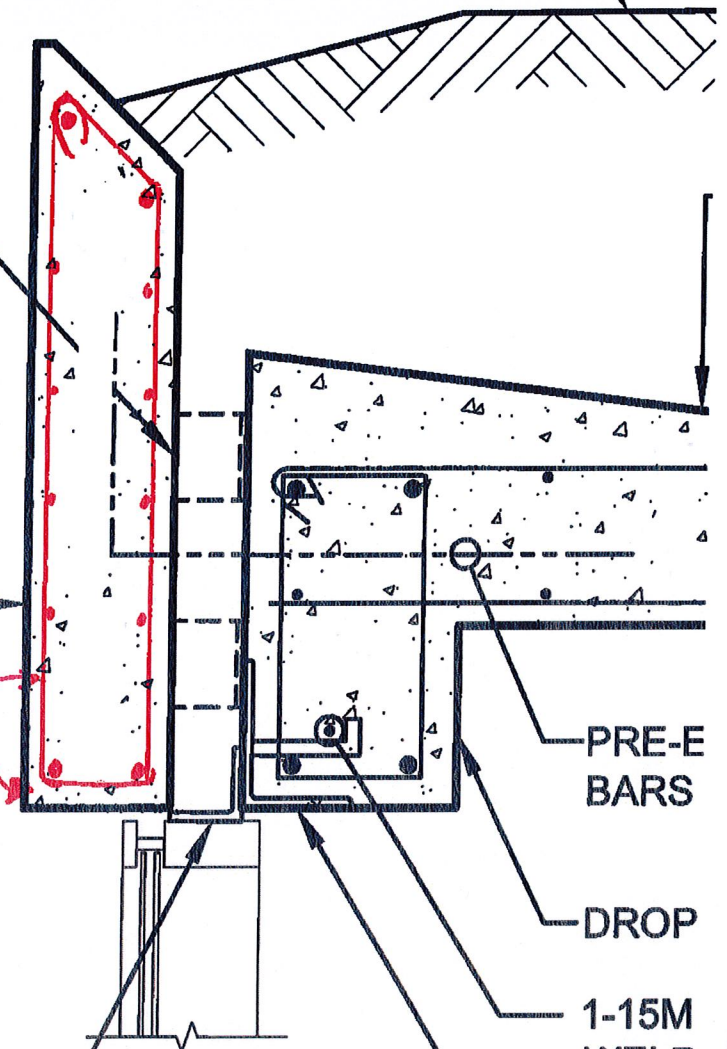
MULLION SUPPORT ANGLE  
 (REFER TO 2/S200)

PRE-E BARS

DROP

1-15M WELD

MULLI (REFE



SSI-S10-SK1 OCT 11/16

---

## STRUCTURAL DESIGN PROPOSAL

FOR THE SCHÖCK THERMAL BREAK ELEMENTS

---




---

THIS DESIGN HAS TO BE APPROVED AND CONFIRMED BY THE STRUCTURAL  
ENGINEER IN CHARGE

---

Project Name: R.W. Tomlinson - New Head Office

Project No.: 4612709

Country: CA

Date: 28-Sep-2016

Designer: Georgios Evangelidis

e-mail: georgios.evangelidis@schoeck.de Phone: +49 7223 967-243

REVIEWED	<input type="checkbox"/>
NOT REVIEWED	<input type="checkbox"/>
REVIEWED AS NOTED	<input checked="" type="checkbox"/>
REVISE/RESUBMIT	<input type="checkbox"/>

DATE: **Oct 11, 2016**

THIS IS A REVIEW ONLY OF CONFORMANCE WITH THE GENERAL DESIGN CONCEPT AND NOT A CHECK ON QUANTITIES, DETAILS OR DIMENSIONS, WHICH ARE THE CONTRACTORS SOLE RESPONSIBILITY IN ORDER TO MEET ALL REQUIREMENTS OF THE CONTRACT DOCUMENTS.

 CLELAND JARDINE ENGINEERING LTD.  
STRUCTURAL ENGINEERS



---

## STRUCTURAL DESIGN PROPOSAL

FOR THE SCHÖCK THERMAL BREAK ELEMENTS

---

**Project Name:** R.W. Tomlinson - New Head Office

**Project No.:** 4612709

**Country:** CA

**Date:** 28-Sep-2016

**Designer:** Georgios Evangelidis

**e-mail:** georgios.evangelidis@schoeck.de      **Phone:** +49 7223 967-243

---

THIS DESIGN HAS TO BE APPROVED AND CONFIRMED BY THE STRUCTURAL  
ENGINEER IN CHARGE

---

**Please note:** The slab edge has to be rigid enough to act as a support for the balcony. The line load applied to the edge of the internal floor slab may influence the on-site reinforcement.

**The following spring stiffness is used to simulate the Schöck Isokorb performance:**

rotation: 10.000 kNm/rad/m

vertical: 250.000 kN/m<sup>2</sup>

**Minimum concrete qualities:**

Internal            ≥ 25 Mpa

External            ≥ 30 Mpa

**Checked by**



**Benoit Mathelet**

Schöck Professional  
Application Engineering

**Designed by**



**Georgios Evangelidis**

Schöck Professional  
Application Engineering

---

## GENERAL NOTES

---

1. Schöck products are proprietary building products, designed and supplied solely by the company.
2. Schöck products are selected for each design situation specifically to satisfy the requirements of the project structural engineer.
3. Schöck provides a warranty on its products up to the maximum capacities and characteristics noted in the technical information.
4. Layout drawings provided by Schöck must be used in conjunction with the project structural engineer's layout and reinforcement drawings during installation, as these may provide information on additional reinforcement required by the products. The installation of Schöck products must also be in accordance with the instruction printed on and/or provided with each product.
5. A qualified engineer is to verify the correct installation of all Schöck products on site. For further information on correct installation please refer to the technical information available at <http://www.schock-us.com>.
6. The project structural engineer shall check for any changes that might occur in the structural behaviour in the building as a result of the use of Schöck products.
7. Schöck shall not be responsible for problems caused by the misuse of its products (including but not limited to incorrect placement, damage or modification of the products) during installation.
8. Information provided by Schöck is for use with Schöck products only, and not with any other part of the project.
9. The loads and drawings upon which this proposal is based have been provided by the project structural engineer. The project structural engineer is responsible for checking and communicating to Schöck any changes to the design information used in the proposal.
10. The project structural engineer is responsible for the checking and validation of this design proposal. Schöck takes responsibility for the product only, and not the integration of the product in the project.
11. This design proposal is provided for the sole use of our client, and may not be used for any other projects or by any other party. This proposal may be reviewed by others; however any changes to the design proposal and/or calculations presented within will render the complete proposal completely void.
12. Any requested changes to this design proposal may incur additional service fees.
13. Either the project structural engineer or the contractor is responsible for checking the product quantities in the proposal along with the quantities on the layout plans and in the order.

## PRODUCT SCHEDULE

**Project Name:** R.W. Tomlinson - New Head Office  
**Project No.:** 4612709  
**Country:** CA  
**Date:** 28-Sep-2016  
**Designer:** Georgios Evangelidis  
**e-mail:** georgios.evangelidis@schoeck.de      **Phone:** +49 7223 967-243

THE QUANTITIES LISTED BELOW NEED TO BE CONFIRMED BY EITHER THE EOR OR CONTRACTOR

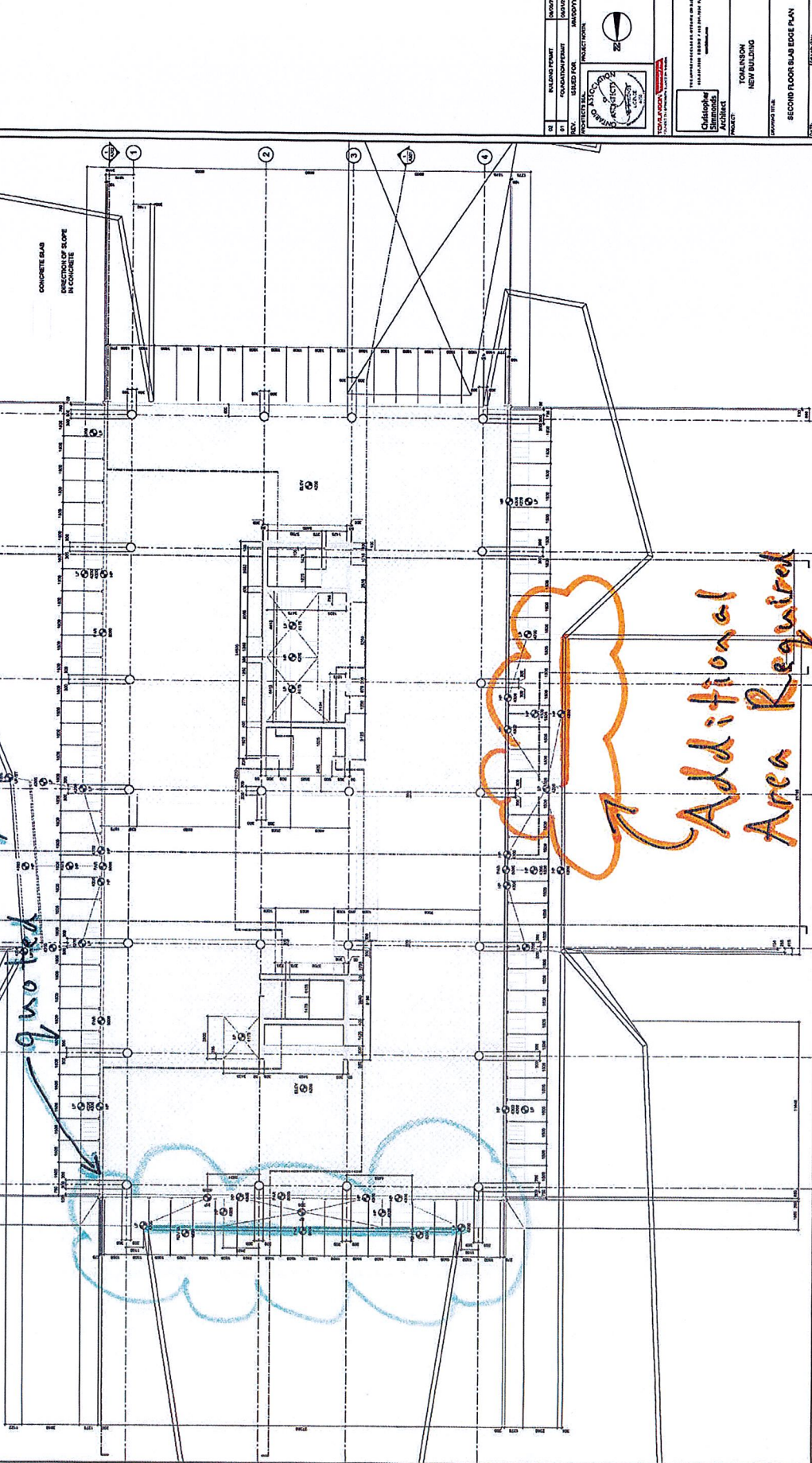
POS	SCHÖCK PRODUCT TYPE	UNIT	QUANTITY	COMMENTS
1	FXT-H250-REI20-BS15	pcs	33	Material already purchased and shipped
2	ZXT-H250-L1000-BS2/BS15	pcs	34	
3	ESD-S20 dowels	pcs	5	
4				
5	FXT-H250-REI20-BS15	pcs	21	Additional required material according to current design proposal
6	HPXT-A-H250-REI20-BS15-special	pcs	30	
7	ESD-S20 dowels	pcs	3	
8				
9				
10				
11				
12				
13				
14				
15				
16				
17				
18				
19				
20				

This design is based on the following drawings:

- |                |                     |
|----------------|---------------------|
| 1. S101 , S200 | dated: 14 July 2016 |
| 2. A602        | dated: 14 July 2016 |
| 3.             | dated:              |

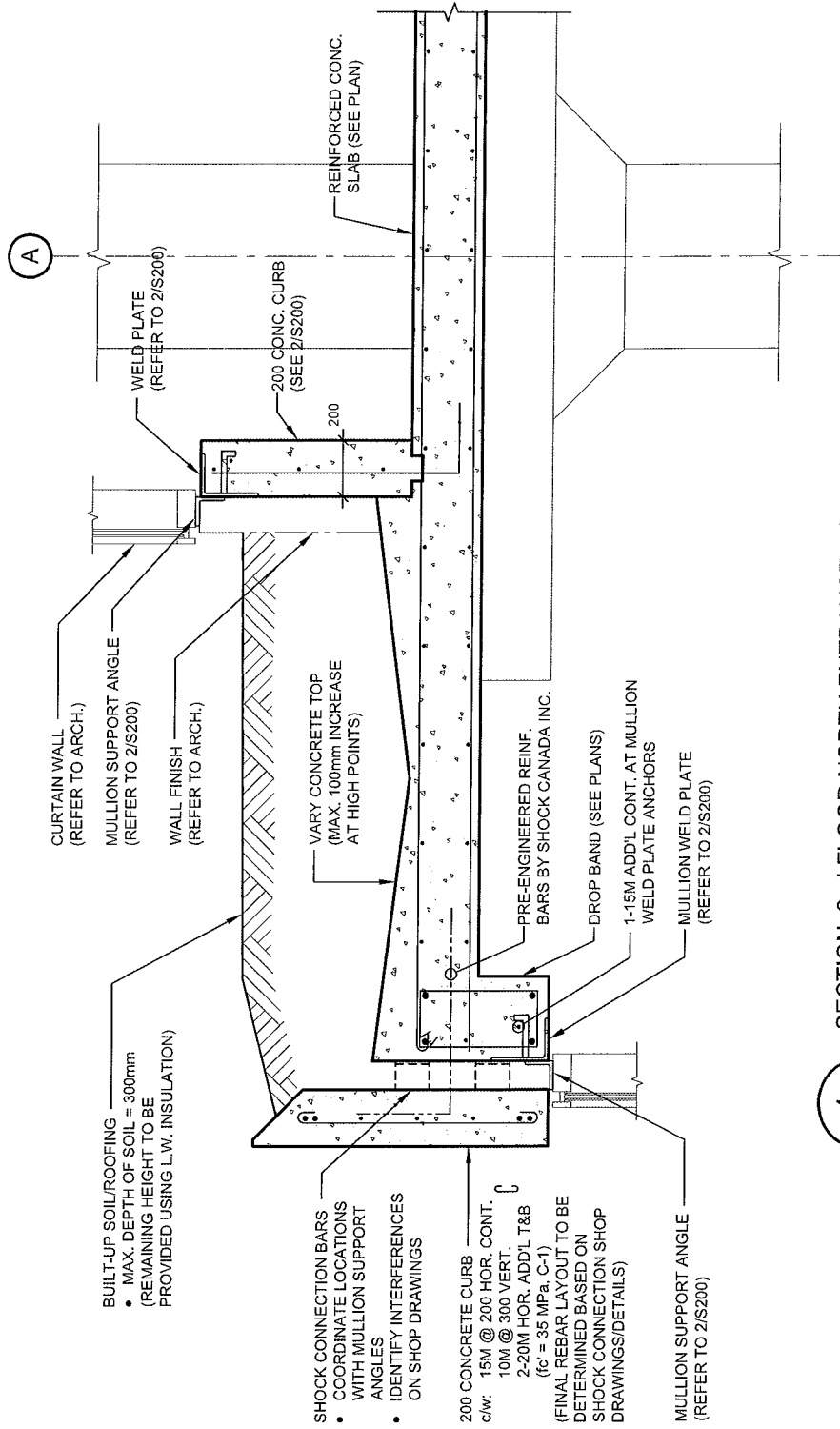
**GENERAL NOTES**  
 1. ALL DIMENSIONS UNLESS OTHERWISE NOTED ARE IN METERS.  
 2. ALL WORK SHALL BE IN ACCORDANCE WITH THE LATEST EDITIONS OF THE INTERNATIONAL BUILDING CODE (IBC) AND THE INTERNATIONAL ENERGY CONSERVATION CODE (IECC).  
 3. ALL WORK SHALL BE IN ACCORDANCE WITH THE LATEST EDITIONS OF THE INTERNATIONAL MECHANICAL AND ELECTRICAL PLUMBING CODE (IMC/IPC/MEPC).

CONCRETE SLAB  
 DIRECTION OF SLOPE  
 IN CONCRETE

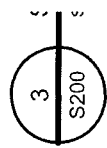


PROJECT: TOMLINSON NEW BUILDING  
 SHEET: SECOND FLOOR SLAB EDGE PLAN  
 DATE: 8/24/2018  
 DRAWN BY: [Name]  
 CHECKED BY: [Name]  
 SCALE: AS SHOWN  
 A112

SECOND FLOOR SLAB EDGE PLAN  
 SHEET 04



4 SECTION: 2nd FLOOR NORTH ENTRANCE ROOF  
SCALE 1:20



MULLION SUPPORT  
(REFER TO 2/S200)

WELD PLATE  
(REFER TO 2/S200)

REINFORCED COI  
SLAB (SEE PLAN)

2nd FLOOR  
T.O.C. EL. 4.200

expansion joint here

1



FW1



FOLDING PARTITION SCREEN  
BEAM/BRACING  
- CONTRACTOR TO SUBMIT 3  
SHEETS FOR REVIEW PRIOR  
FABRICATION/SHOP DRAW  
- SEE TYPICAL DETAILS FOR

9000

350 WIDE x 240 DEEP DROP I  
c/w: - 2-15M T&B ADD'L LONG  
- EXTEND 900mm PAST V  
- 10M STIRRUPS @ 300 c

expansion joint every 5.2m

2



6000

~21m thermal break connection

3



9000

expansion joint here

4



FW1

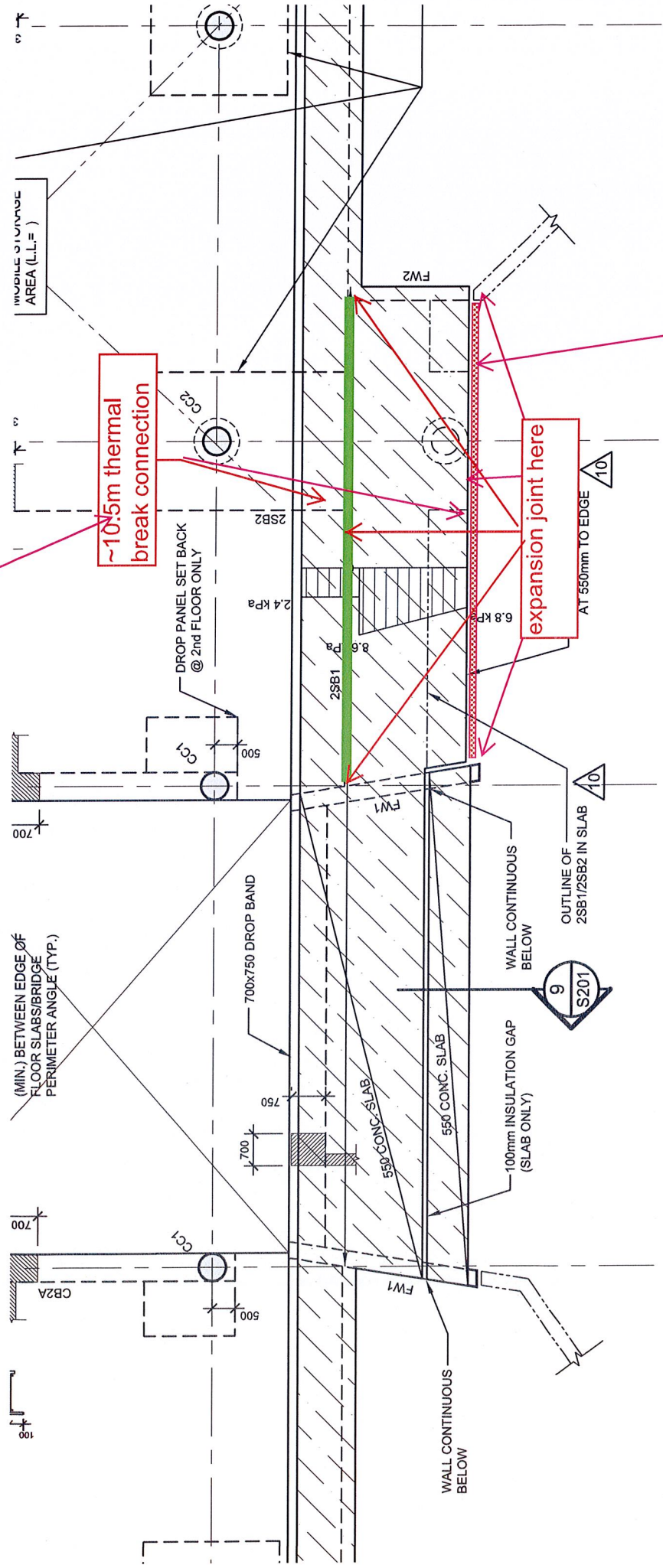


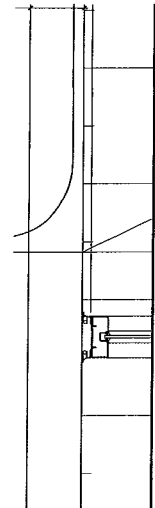
CONFIRM GAP WITH ARCH

~10.5m thermal break connection

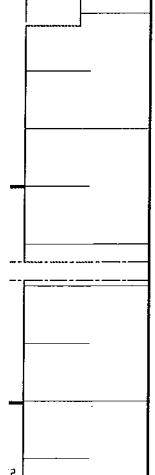
expansion joint here

CURB TO BE SUPPORTED IS HERE

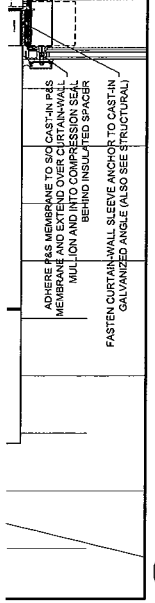




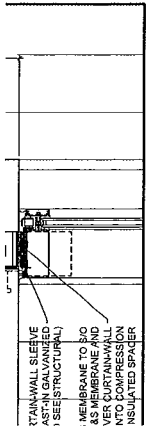
3 TYPICAL VESTIBULE ROOF & PARAPET DETAIL  
SCALE 1:10  
A602



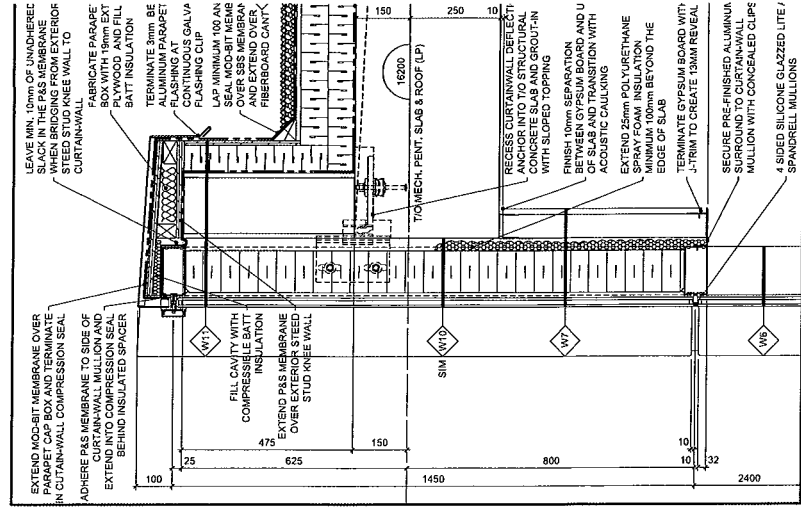
3 TYPICAL VESTIBULE ROOF & PARAPET DETAIL  
SCALE 1:10  
A602



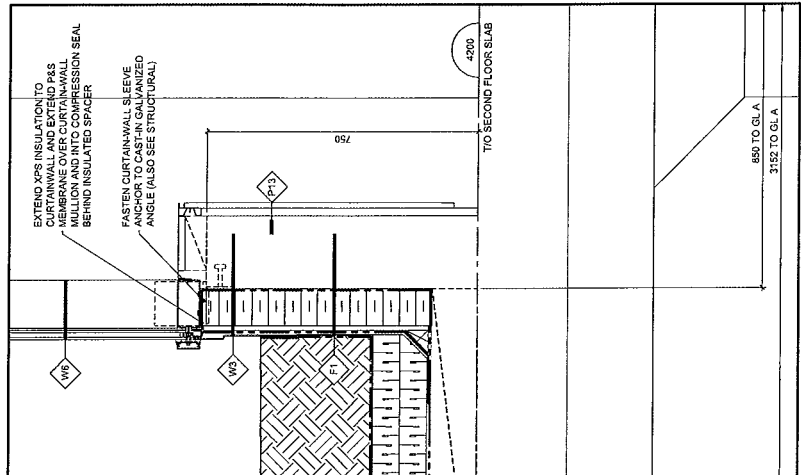
6 GROUND FLOOR LANDSCAPED AREA ROOF DETAIL  
SCALE 1:10  
A602



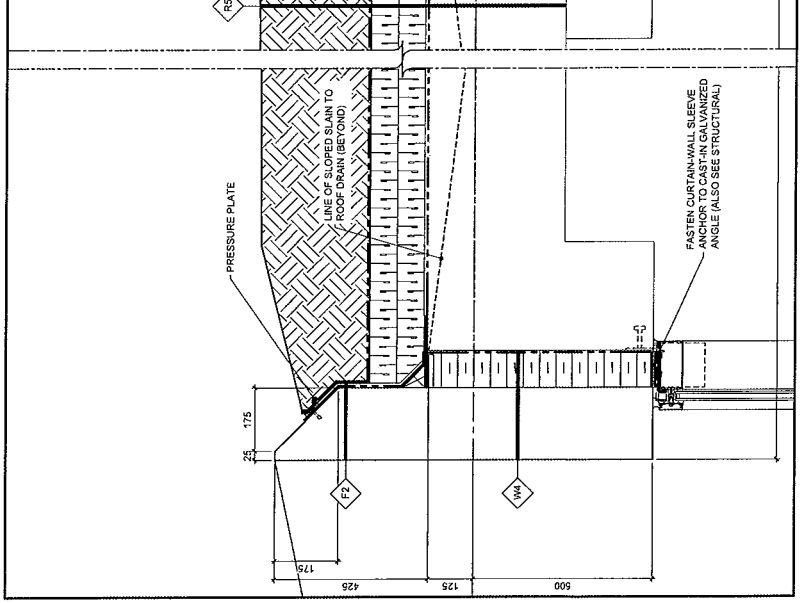
6 GROUND FLOOR LANDSCAPED AREA ROOF DETAIL  
SCALE 1:10  
A602



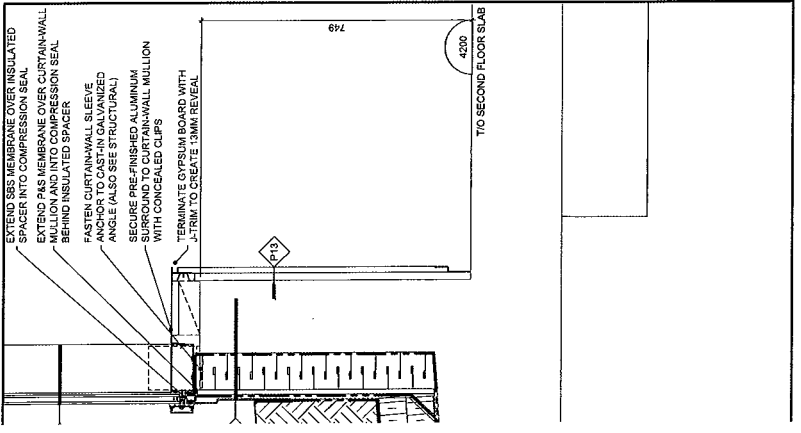
7 N/S GL'S PAR. & T/O C'WALL IN OPEN  
SCALE 1:10  
A602



3 TYPICAL VESTIBULE ROOF & PARAPET DETAIL  
SCALE 1:10  
A602



6 GROUND FLOOR LANDSCAPED AREA ROOF DETAIL  
SCALE 1:10  
A602



6 GROUND FLOOR LANDSCAPED AREA ROOF DETAIL  
SCALE 1:10  
A602

17

17



Project

Tomlinson New Building

Project No.

4612709

Date

27/09/16

Page

Engineer

Georgios Evangelidis



Structural specification

Thermally broken concrete curb

Seismic shear calculation for concrete parapet

$$V_p = 0.3 \cdot \Gamma_a \cdot S_{109} \cdot I_e \cdot S_p \cdot W_p$$

$$= 0.3 \cdot 1.0 \cdot 0.66 \cdot 1.0 \cdot S_p \cdot W_p$$

$$= 0.198 \cdot S_p \cdot W_p$$

$$S_p = C_p \cdot A_v \cdot A_x / R_p = 4.0 \text{ (100)}$$

$$= 1.0 \cdot 9.5 \cdot 3 / 1.0 = 28.5 \Rightarrow C_p = 4.0 \text{ (100)}$$

$$C_p = 1.0 ; A_v = 9.5 ; R_p = 1.0$$

$$A_x = 1 + 2h_s / h_n \quad h_s = h_n \text{ at roof}$$

$$A_x = 3$$

$$\Rightarrow V_p = 0.198 \cdot 4.0 \cdot W_p$$

$$\Rightarrow V_p = 0.792 W_p$$

$$W_p = 6.0 \text{ kN/m} ; \text{Weight of curb}$$

$$V_p = 4.75 \frac{\text{kN}}{\text{m}} ; \text{lateral seismic shear force applied through the center of mass.}$$

Project

Tomlinson New Building

Project No.

4612709

Date

27/09/16

Page

Engineer

Georgios Evangelidis



Structural specification

Thermally broken concrete curb

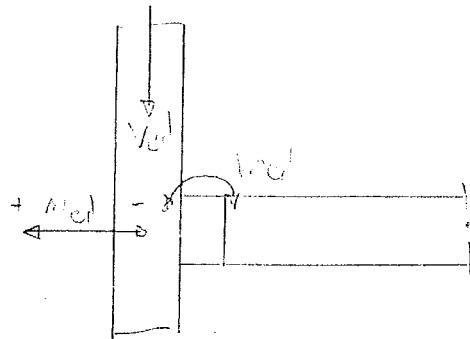
### o Connection Design Forces :

$$V_{ed} = 7.5 \text{ kN/m}$$

$$M_{ed}^+ = H_d + V_p = 3.7 + 1.75 = 5.45 \text{ kN/m}$$

$$M_{ed}^- = V_p = -1.75 \text{ kN/m}$$

$$\begin{aligned}
 M_{ed} &= H_d \cdot 0.3 \text{ m} + V_p \cdot 0.15 \text{ m} + V_{ed} \cdot 0.99 \text{ m} \\
 &= 3.7 \cdot 0.3 - 1.75 \cdot 0.15 + 7.5 \cdot 0.99 \\
 &= 3.5 \text{ kN-m/m}
 \end{aligned}$$



↙  $V_p$  acting at the center of curb

### o Strength capacity of single FXT unit :

$$V_r = \pm 11.2 \text{ kN} \quad ; \quad \text{vertical shear strength}$$

$$N_r = +60 \text{ kN} / -32 \text{ kN} \quad ; \quad \text{axial strength}$$

$$M_r = \pm 9.3 \text{ kN-m} \quad ; \quad \text{moment strength}$$

### o Maximum axial spacing $\alpha_{max}$ between FXT

$$\alpha_{max} \times 3.5 \frac{\text{kN-m}}{\text{m}} \leq 9.3 \text{ kN-m}$$

$$\Rightarrow \alpha_{max} \leq 65 \text{ cm}$$

$$V_{ed} = 0.65 \times 7.5 = 4.9 \text{ kN} < V_r \quad \text{OK} \checkmark$$

$$N_{ed}^+ = 0.65 \times 5.45 = 3.5 \text{ kN} < N_r^+ \quad \text{OK} \checkmark$$

$$N_{ed}^- = 0.65 \times (-1.75) = -1.1 \text{ kN} < N_r^- \quad \text{OK} \checkmark$$

Project

Tomlinson New Building

Project No.

46/12709

Date

27/09/16

Page

Engineer

Georgios Evangelidis



Structural specification

Thermally broken concrete curb

o Seismic Inertial shear force  $V_p$   
also to be applied along the  
connecting joint - horizontal shear!

o Isokorb HPXT-A-special with  
horizontal shear strength

$$V_{hr} = \pm 6.9 \text{ kN}$$

$\alpha_{max}$  = maximum axial spacing for HPXT-A

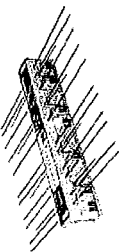
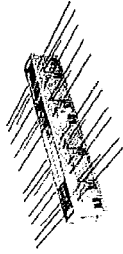
$$V_r \times \alpha_{max} \leq V_{hr}$$

$$\Rightarrow 4.75 \frac{\text{kN}}{\text{m}} \times \alpha_{max} \leq 6.9 \text{ kN}$$

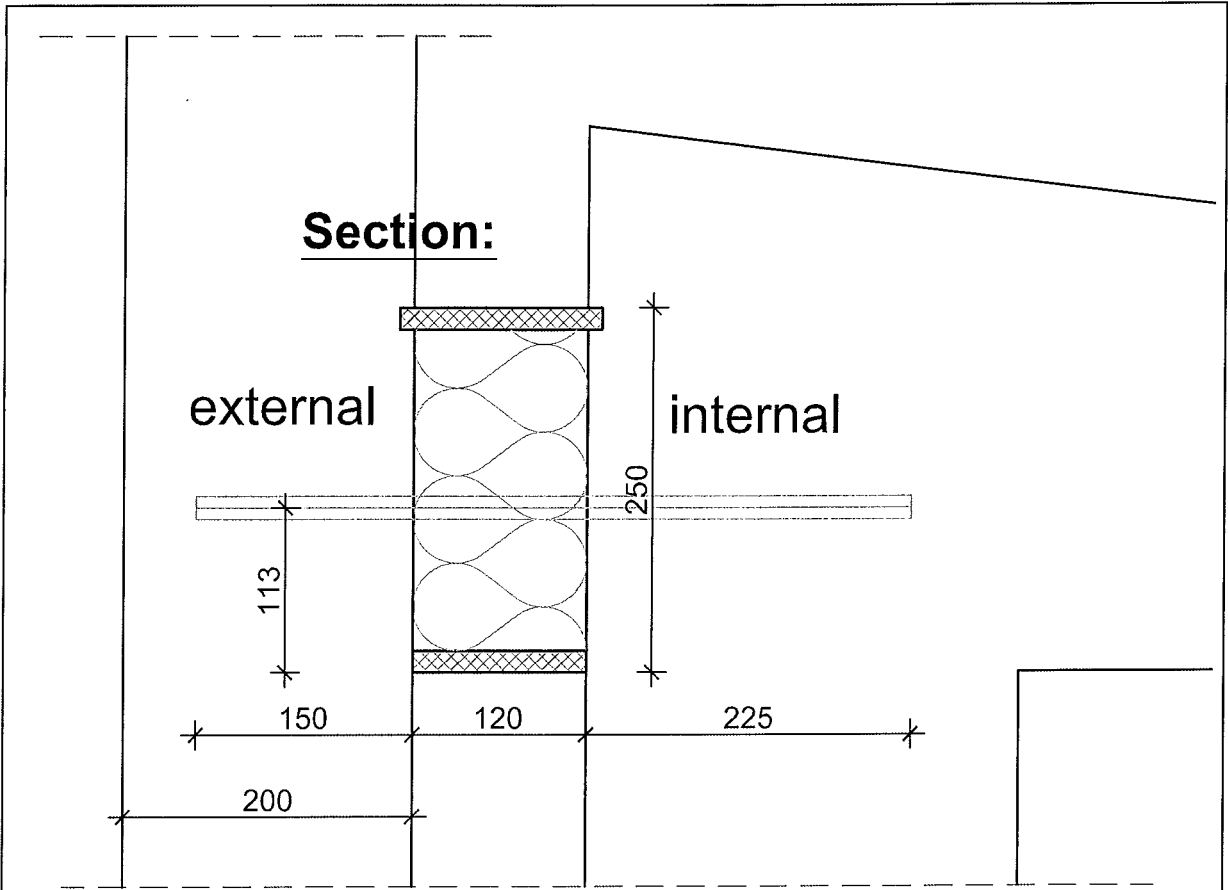
$$\Rightarrow \alpha_{max} \leq \underline{\underline{1.45 \text{ m}}}$$



Mehr auf [www.schoeck.de](http://www.schoeck.de)

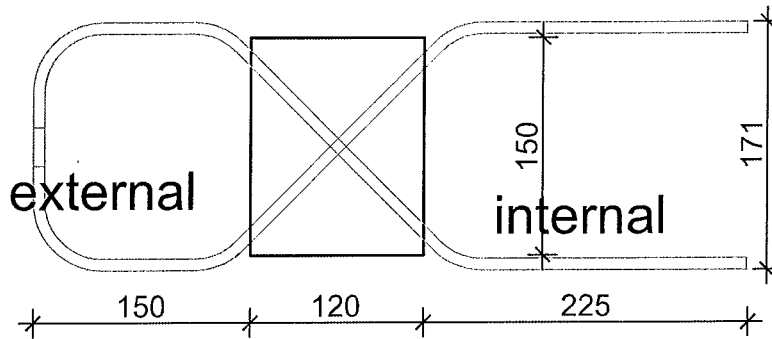


**30 % mehr Wärmedämmung**  
**50 % mehr Trittschalldämmung**  
**120 mm Dämmkörperdicke**



Please check and let us know if our proposal meets your structural requirements !

**Plan view:**



Schöck Isokorb® Type:		B			
HPXT-A-H250-REI120-BS15-Special		A			
Article Number :	Revision	Rev.	Date	Designed	Drawn
113XXXX	Created		09/23/16	ev	bf
	Tel.: +49 (0) 7223 967 -			243	134

Rated Values/Standard:	
MRd=	
VRd=6.9 kN	
NRd=	
Reinforcement/Lengths of Rods:	
Tension: ∅	
Sh.fo.: 2 ∅ 8 630	
Thrust: ∅	
∅	
∅	
Concrete: external ≥ 30 MPa	Lambda-Value:
internal ≥ 25 MPa	λ <sub>eq</sub> = W/(mK)

Refer to construction documents and specifications for additional information.

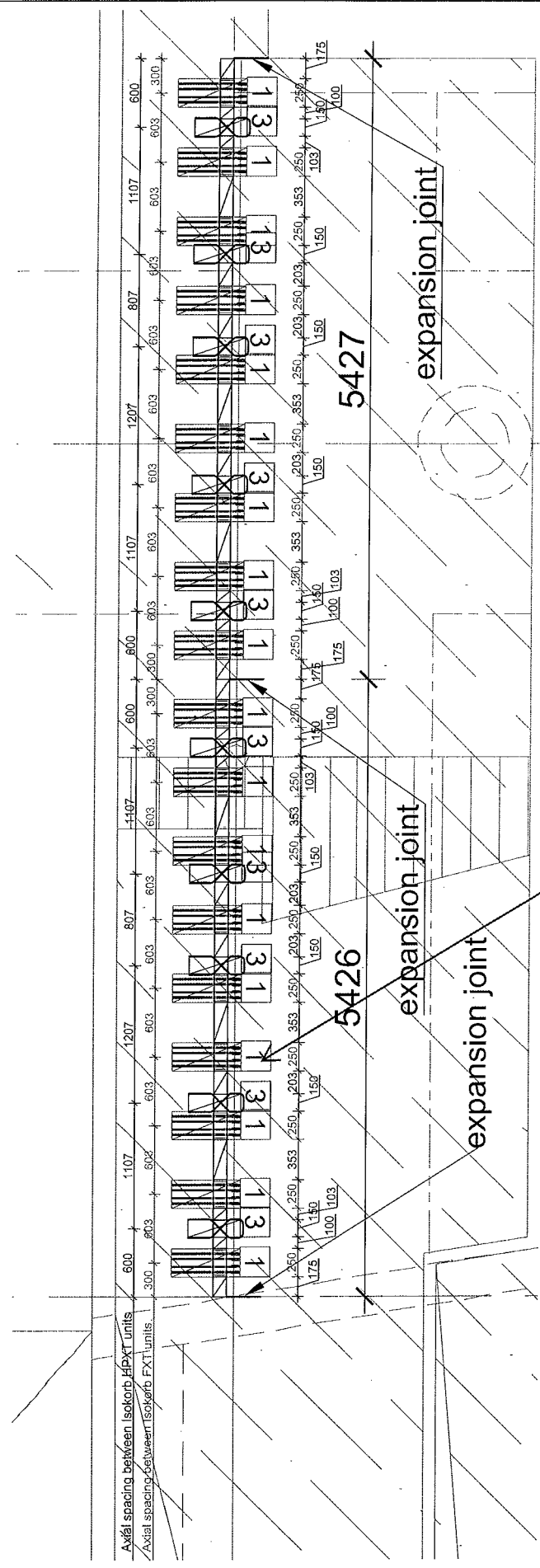
Detail as shown is applicable for Schoeck Thermal Break Element only; does not include design of structural framing members or additional reinforcing that might be required.

Project Number:	4612709
Project:	R.W. Tomlinson
	New Head Office
Country:	CA
Position:	3

**Schöck**  
 Innovative Building Solutions

Schoeck Canada Inc.  
 305 King Street West Unit 1010  
 N2G 1B9 Kitchener, ON  
 Tel: +1 855-572-4625  
 email: [info@schoeck.ca](mailto:info@schoeck.ca)





SEE MARKUP ON OTHER PLAN

Please note:

Isokorb does not provide any monolithic connection between the thermally broken structural elements. The parapet wall considered to be attached to the interior slab via Isokorb. The interior slab edges must be reinforced accordingly in order to receive the loads transferred by Isokorb. The structural stability of the interior slab should be independent of the exterior slab.

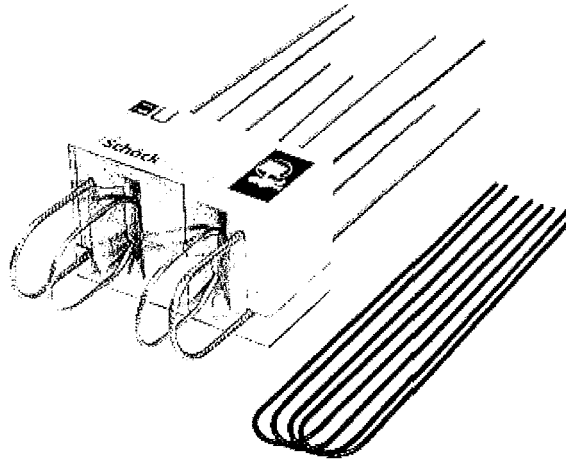
**Schöck Isokorb Schedule**

Pos.	Type	Units	M <sub>r</sub> (-)	M <sub>r</sub> (+)	V <sub>r</sub> (-)	V <sub>r</sub> (+)
1	FXI-H250-L250-REI120-BS15	18	See design	See design	See design	See design
2	ZXT-H250-L1000-BS2/BS15	5	See design	See design	See design	See design
3	HPXT-AA-H250-REI120-BS15-special	10	See design	See design	See design	See design

Stair requirements		E		C		B		A		09/23/16		ev		Df	
Revision		Rev.		Date		I		Designed		Drawn		ev		Df	
Created		08/29/18		ev		213		134							
Email: <a href="mailto:Energias.Europeas@schock.de">Energias.Europeas@schock.de</a> Tel.: +49 (0) 7253 987															
Project Name: <b>4612709</b>															
Project: <b>R.W. Tomlinson</b>															
Drawing Title: <b>Layout drawing</b>															
Drawing No.: <b>?</b>															
Company: <b>New Head Office</b>															
Country: <b>US</b>															
Position: <b>?</b>															
Connection type: <b>?</b>															
Fill Concrete: <b>27.5 MPa</b>															
Exterior slab: <b>27.5 MPa</b>															
Interior slab: <b>27.5 MPa</b>															
<p>Refer to erection documents and specifications for additional information.</p> <p>Detail as shown is applicable for Schöck Thermal Break Element only; does not include design of structural framing reinforcing (may be required).</p>															
<p><b>Schöck</b> Inventor's Address: Schöck Canada Inc. 305 King Street West Unit 1010 Toronto, ON M5X 1C4 Tel: +1 855-572-6525 email: <a href="mailto:info@schock.ca">info@schock.ca</a></p>															



## Schöck Isokorb® Typ FXT



Schöck Isokorb® Typ FXT

### Schöck Isokorb® Typ FXT

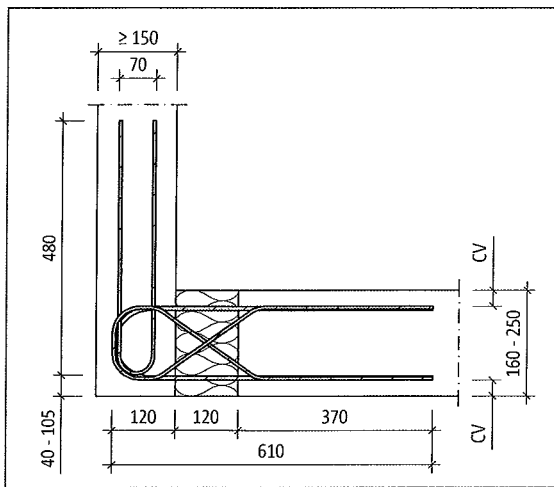
Für vorgesetzte Brüstungen geeignet. Er überträgt Normalkräfte, positive und negative Momente und Querkkräfte.

PLEASE NOTE:  
ISOKORB FXT PRODUCT IS DELIVERED ALONG WITH  
ADDITIONAL U-BARS REINFORCEMENT  
U-BARS TO BE INSTALLED VERTICALLY INTO THE  
CURB AND BE TIED TOGETHER WITH THE ISOKORB  
REINFORCEMENT!

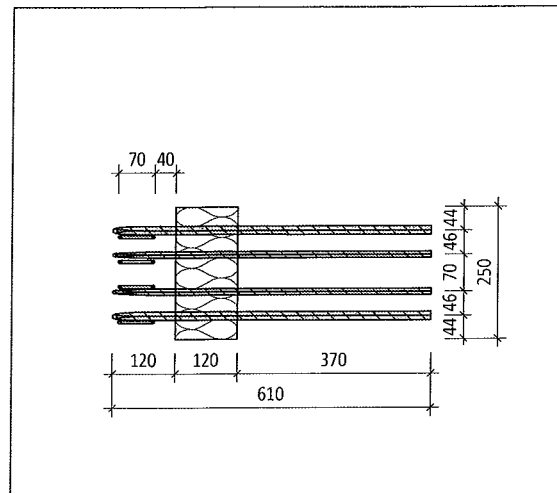
FXT

Stahlbeton/Stahlbeton

## Produktbeschreibung | Betondeckung



Schöck Isokorb® Typ FXT: Produktschnitt



Schöck Isokorb® Typ FXT: Produktgrundriss

### Produktinformationen

Mindestbreite der Brüstung  $b_{\min} = 150$  mm, Mindestdeckenhöhe  $H_{\min} = 160$  mm beachten.

Download weiterer Grundrisse und Schnitte unter [www.schoeck.de/de/download](http://www.schoeck.de/de/download)

### Betondeckung

Die Betondeckung CV des Schöck Isokorb® Typ FXT variiert in Abhängigkeit von der Deckenhöhe. Da für die Bewehrung der Brüstung im Bereich des Schöck Isokorb® ausschließlich nichtrostende, gerippte Betonstähle verwendet werden, besteht kein Korrosionsrisiko. Daher ist auch bei einer Expositionsklasse XC4 eine Betondeckung im Bereich des Schöck Isokorb® Typ FXT von  $CV = 30$  mm ausreichend.

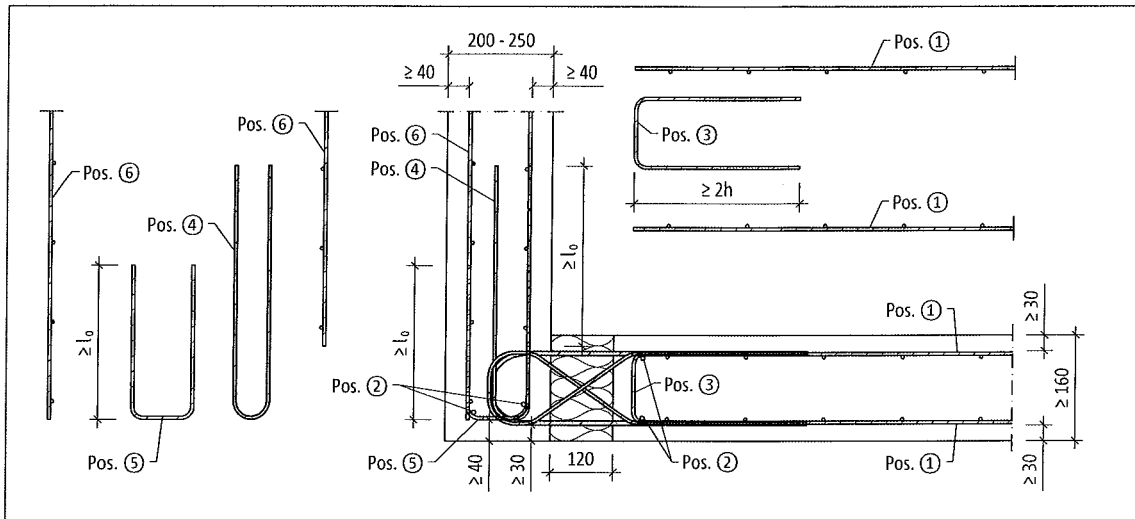
Für die ab Werk mitgelieferten Anschlussbügel aus Betonstahl ist in der Brüstung die Betondeckung  $c$ , abhängig von der Expositionsklasse zu wählen.

Schöck Isokorb® Typ		FXT
Betondeckung bei		CV [mm]
Isokorb®-Höhe H [mm]	160	30
	170	35
	180	40
	190	45
	200	30
	210	35
	220	40
	230	45
	240	50
	250	55

FXT

Stahlbeton/Stahlbeton

## REINFORCING OF THE SLAB EDGE AND CURB



Schöck Isokorb® Typ FXT: Bauseitige Bewehrung bei Brüstungsbreite  $b = 200 - 250$ ; Bauseitige Bewehrung  $b = 150 - 190$  wie  $b = 200 - 250$  ohne Pos. 5

### Vorschlag zur bauseitigen Anschlussbewehrung

Angabe der Übergreifungsbewehrung für Schöck Isokorb® bei einer Beanspruchung von 100 % des maximalen Bemessungsmoments bei C20/25 oder C25/30; konstruktiv gewählt:  $a$ , Übergreifungsbewehrung  $\geq a$ , Isokorb®-Zug-/Druckstäbe.

Schöck Isokorb® Typ		FXT
Reinforcement	location	Decke (XC1) Betonfestigkeitsklasse $\geq$ C20/25 Brüstung (XC4) Betonfestigkeitsklasse $\geq$ C25/30
Pos. 1 Übergreifungsbewehrung		
Pos. 1 [cm <sup>2</sup> /Element]	slab edge	1,00
Übergreifungslänge $l_0$ [mm]	slab edge	332
Pos. 2 Stabstahl längs der Dämmfuge		
Pos. 2	slab edge/curb	4 $\varnothing$ 8
Pos. 3 Bügel als Aufhängebewehrung		
Pos. 3	slab edge	$\varnothing$ 6/250
Pos. 4 werkseitig mitgelieferter Anschlussbügel		
Pos. 4	curb	4 $\varnothing$ 6
Pos. 5 konstruktive Randeinfassung (entfällt bei $b = 150 - 190$ mm)		
Pos. 5	curb	$\varnothing$ 6/200
Übergreifungslänge $l_0$ [mm]	curb	340
Pos. 6 Übergreifungsbewehrung		
Pos. 6 [cm <sup>2</sup> /Element]	curb	1,13
Übergreifungslänge $l_0$ [mm]	curb	340

### Info bauseitige Bewehrung

Alternative Anschlussbewehrungen sind möglich. Für die Ermittlung der Übergreifungslänge gelten die Regeln nach DIN EN 1992-1-1 (EC2) und DIN EN 1992-1-1/NA. Eine Abminderung der erforderlichen Übergreifungslänge mit  $m_{Ed}/m_{Rd}$  ist zulässig. Die Pos. 5 darf bei der bauseitigen Bewehrung für Brüstungsbreiten  $b = 150 - 190$  mm entfallen (ohne Abbildung).

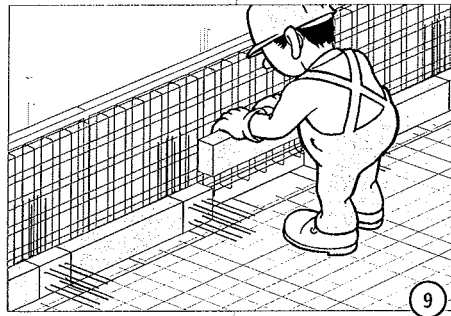
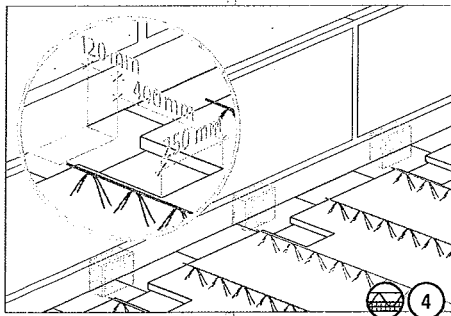
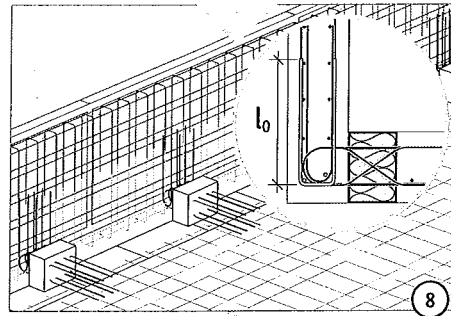
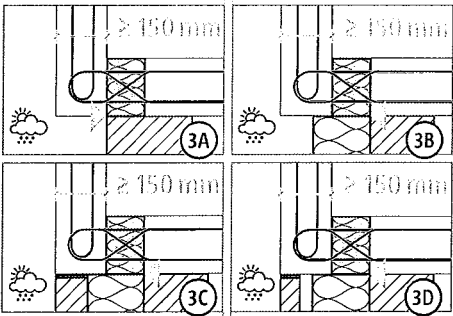
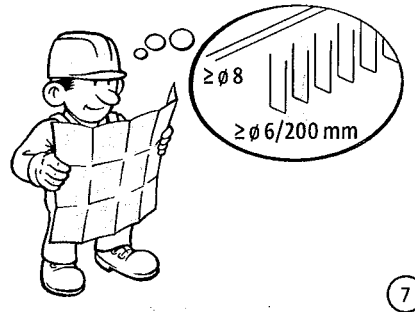
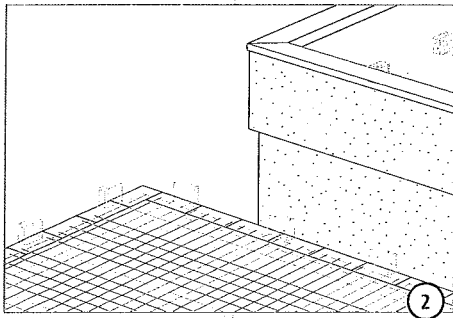
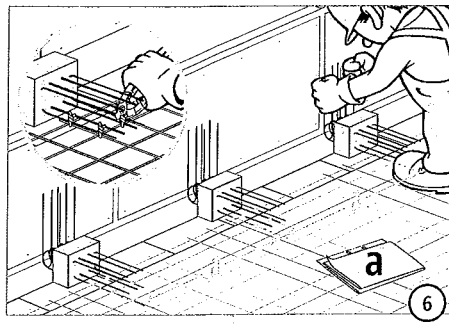
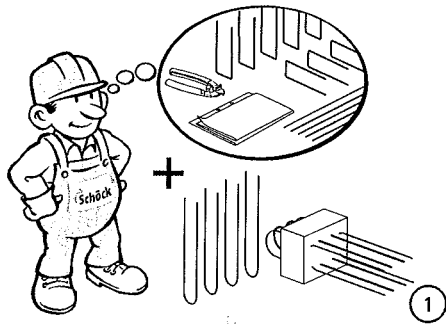
FXT

Stahlbeton/Stahlbeton

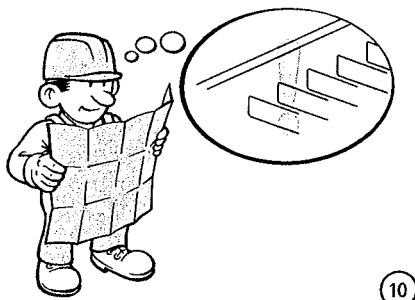
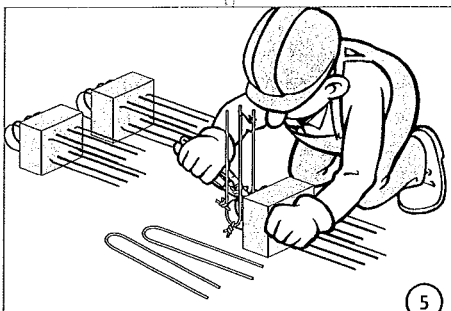
# Product Installation Guidance

FXT

Stahlbeton/Stahlbeton

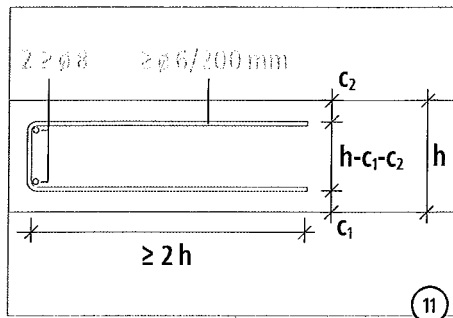


INSTALL  
SCHOECK  
INSULATION  
SPACERS  
BETWEEN THE  
FXT UNITS

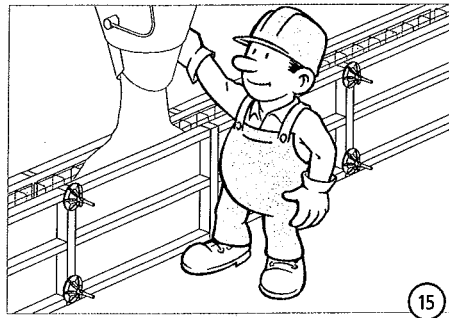


PLEASE NOTE:  
VERTICAL U-BARS MUST BE TIED TOGETHER  
WITH ISOKORB FXT REINFORCEMENT

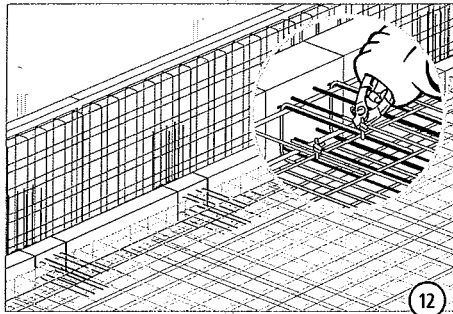
# Product Installation Guidance



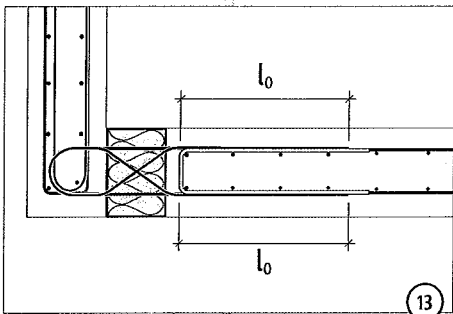
11



15



12



13



14



FXT

Stahlbeton/Stahlbeton