



R.W. TOMLINSON - NEW HEAD OFFICE

TAL-CO Building Innovations
1341-2 Coker Street
Greely, Ontario K4P 1A1
Tel: 613-821-3959
Fax: 613-821-2938

Issue date: 19-Oct-16
Revision date: N/A
Revision #: N/A

CLARIFICATION #12

The following modifications and clarifications are to be accounted for on this project. As well, when entering into the Form of Agreement to do the work, they shall become a part thereof.

Instruction/Clarifications:

Please be advised that Clarification #12 has been issued for the above-mentioned project, as per the details below.

1. Provide pricing for Door hardware and channels for office partitions in reference to the following requirements:

“Agile 150” by Dorma, clear anodized finish for channels, etc..
Stainless steel finish for door pulls M21.270, Manet M21 Series, Back to Back Handles Length 720 mm, 25 mm diameter handle, 520 mm centres.

2. Refer to page 7.2 of catalogue excerpt, attached.

All other glazing related hardware to be as per original specifications.

Pricing to be submitted by **Monday October 24th, at 3pm.**

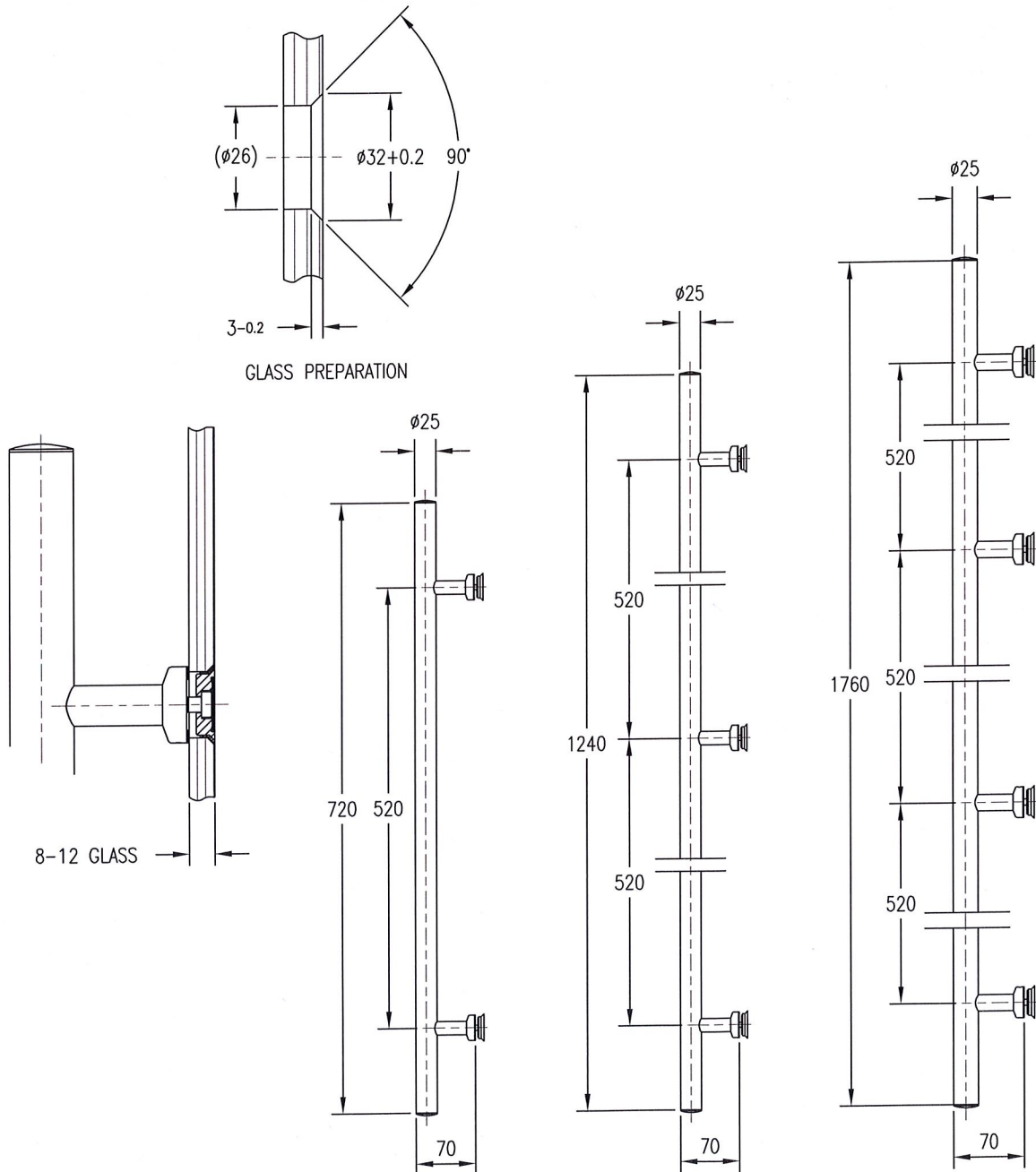
Reminder: It is your responsibility to consult ALL documents, drawings, sketches, Clarifications, Addenda, and Supplemental Instructions.

For questions or further information, please contact the office by e-mail at info@tal-co.com.

End of Clarification No. 12

DOOR HANDLES

MANET



MANET HANDLE SPECIFICATION: MANET M29 Series Single Sided Handles with Countersunk Fixings.

M29.271 for 720 x 25mm Handle, 520mm Centers.

M29.274 for 1240 x 25mm Handle, 520mm Centers.

M29.277 for 1760 x 25mm Handle, 520mm Centers.

Specify glass thickness 8, 10 or 12mm.

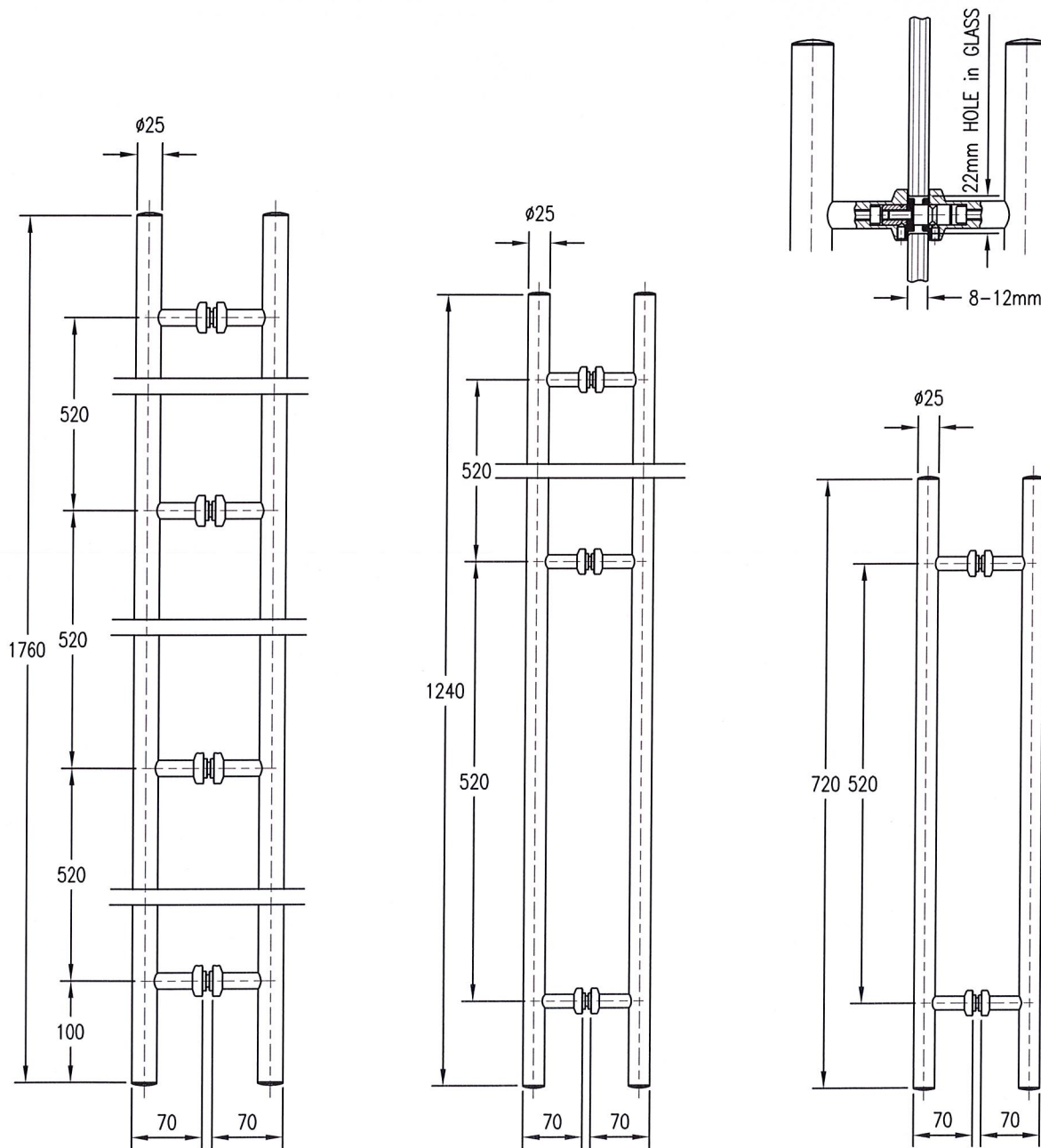
Thicker Glass and Timber Doors on application.

FINISHES

STAINLESS: SSS

DOOR HANDLES

MANET



MANET HANDLE SPECIFICATION: MANET M21 Series Back to Back Handles

M21.270 for 720 x 25mm Handle, 520mm Centers.

M21.273 for 1240 x 25mm Handle, 520mm Centers.

M21.276 for 1760 x 25mm Handle, 520mm Centers.

Specify glass thickness 8, 10 or 12mm.

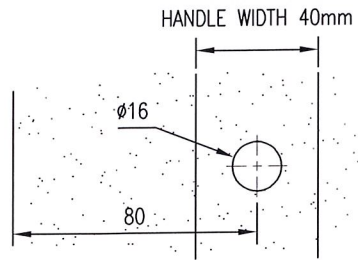
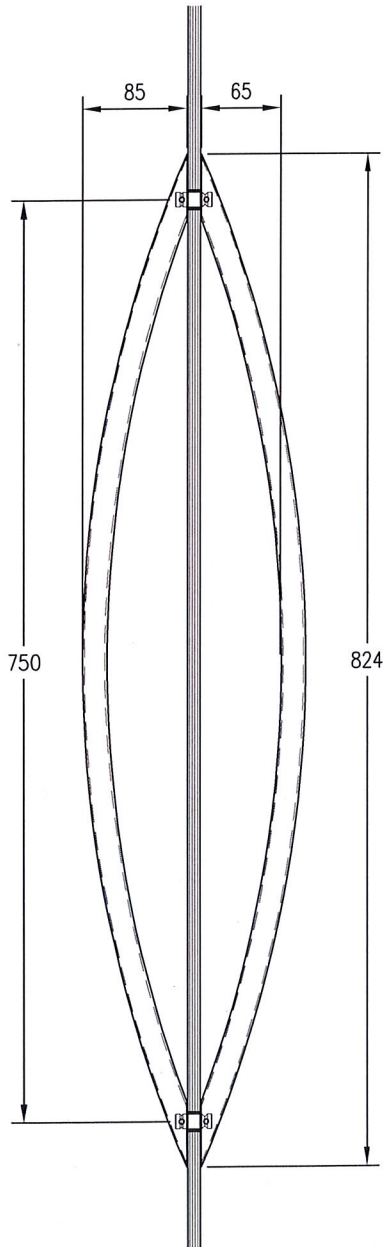
Thicker Glass and Timber Doors on application .

FINISHES

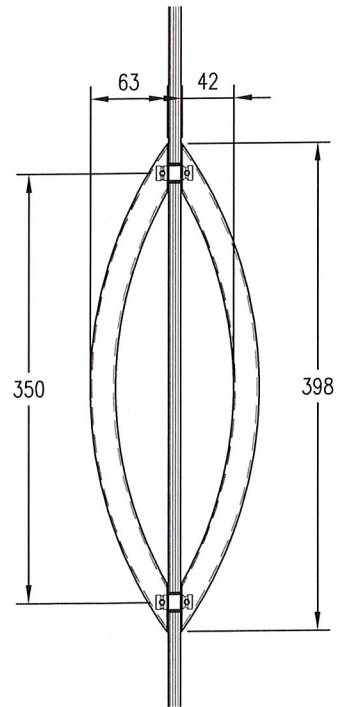
STAINLESS: SSS

DOOR HANDLES

ARCOS



GLASS PREPARATION



ARCOS HANDLE SPECIFICATION: ARCOS A26 Series Back to Back Handles.
 A26.500 for 398mm Handle, 350mm Centers.
 A26.510 for 824mm Handle, 750mm Centers.
 Specify glass thickness 8, 10 or 12mm.
 Thicker Glass and Timber Doors on application.

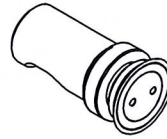
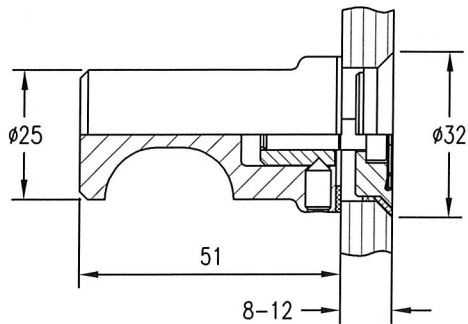
FINISHES
 STAINLESS: SSS

DOOR HANDLES

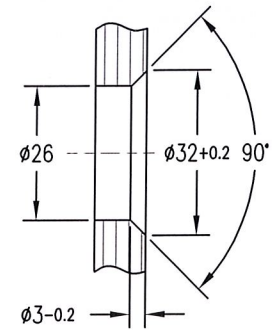
KNOBS

M21.422

SINGLE DOOR KNOB, COUNTERSUNK

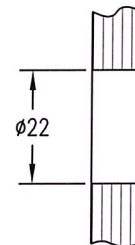
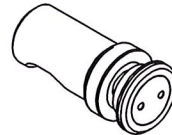
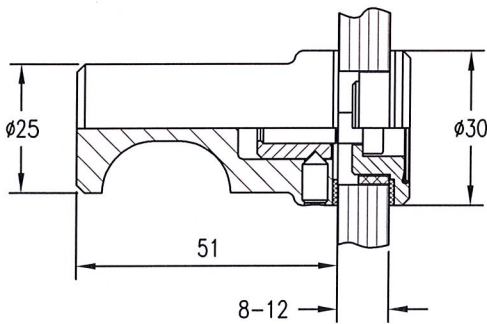


Countersunk Hole Detail



M21.426

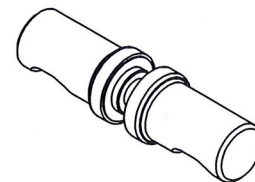
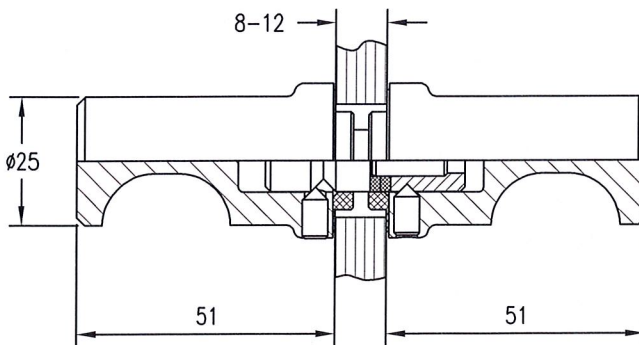
SINGLE DOOR KNOB, CLAMPING DISC



Drilling Hole Detail
FOR M21.426 & M21.423

M21.423

DOOR KNOB, BACK TO BACK



MANET KNOBS SPECIFICATION: Suit Glass Thickness 8, 10, or 12mm.
Thicker Glass and Timber Doors on application.

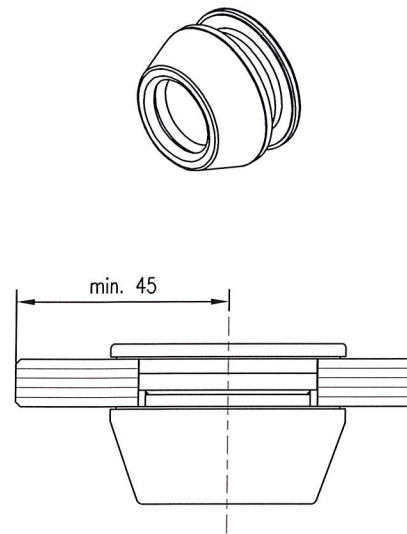
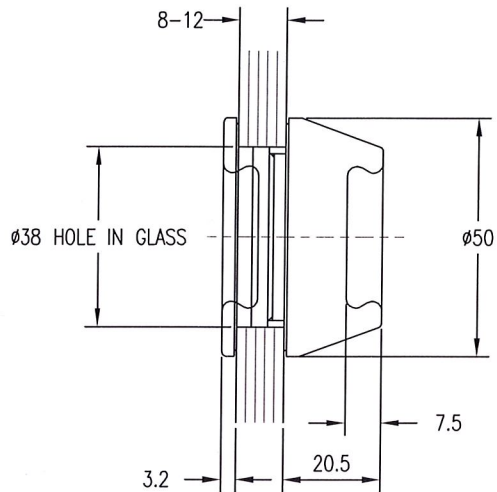
FINISHES
STAINLESS: SSS

DOOR HANDLES

PULLS

M21.290

RECESSED PULL GRIP

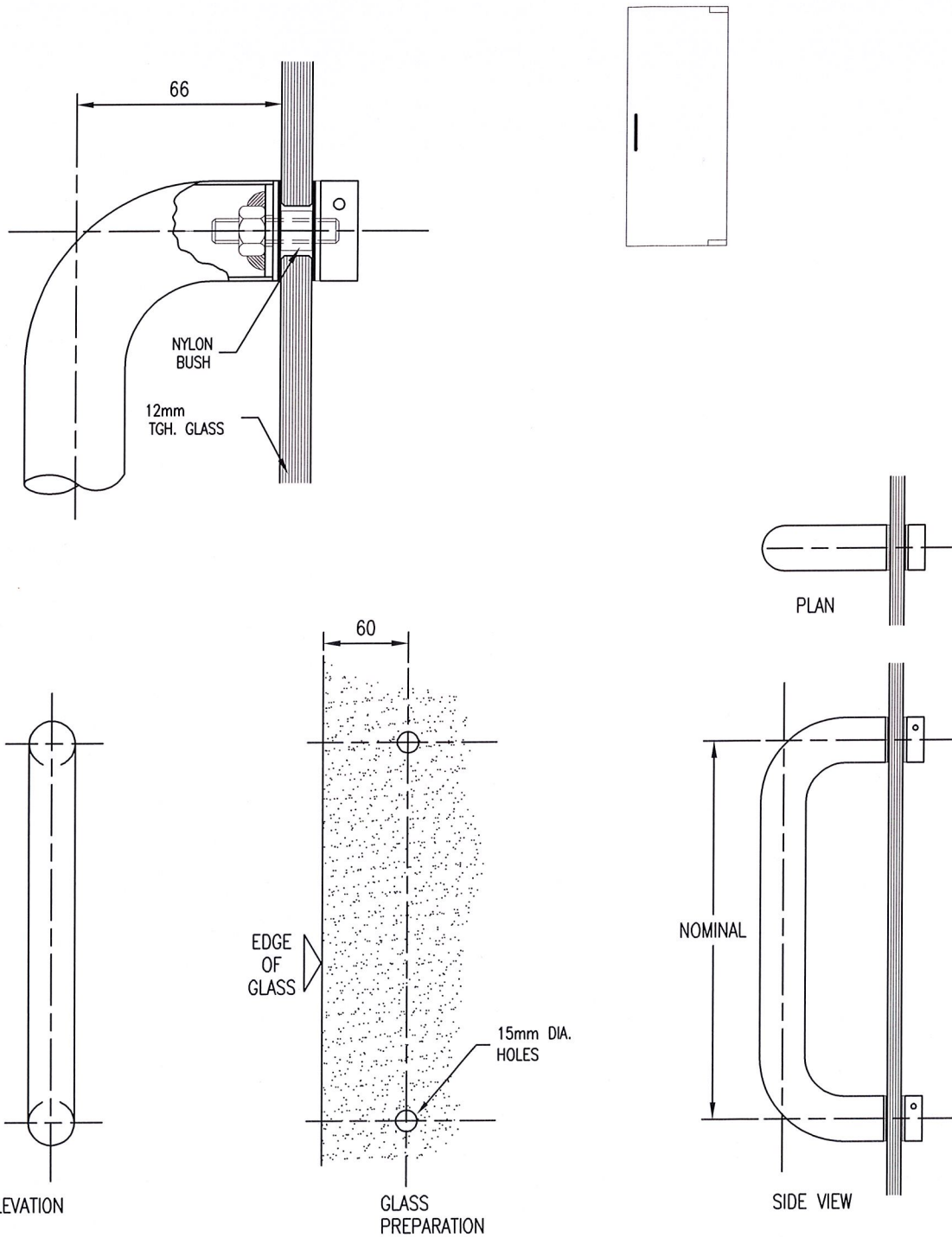


PULLS SPECIFICATION: Suit Glass Thickness 8, 10, or 12mm.
Thicker Glass and Timber Doors on application.
NOTE: Silicon / UV Bonded - CDS1.FP to Glass

FINISHES
STAINLESS: SSS

DOOR HANDLES

CD 1-30

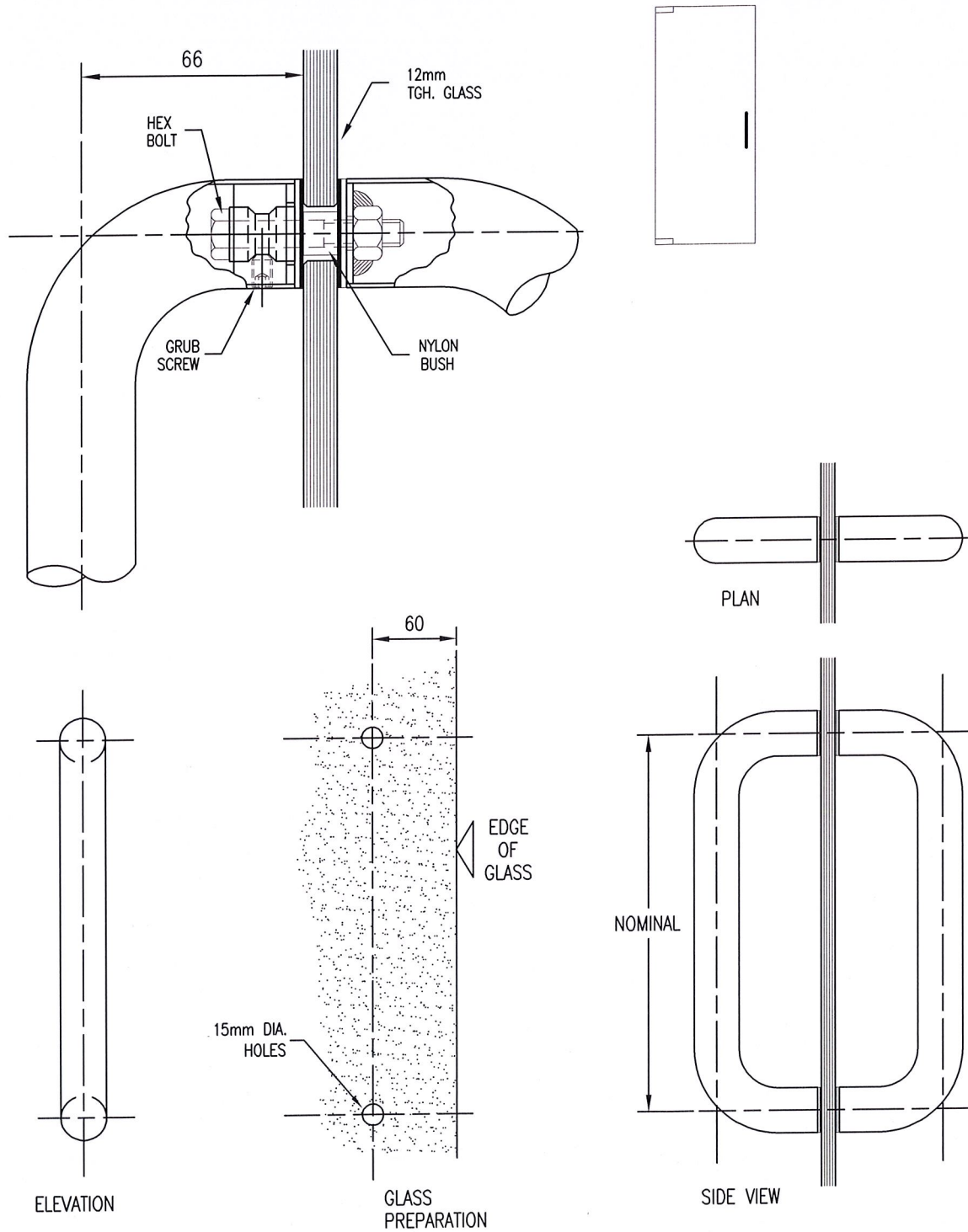


CD 1 SPECIFICATION: 32mm dia. Tubular "D" Pull, single side fix with Buttons. Specify hole centres as required.
 Specify Tube diameter 25mm and 32mm.
 Specify finish required.
 Note: Back to Back handle CD 2.
 SIZES (CENTRE TO CENTRE)
 CD 1-30 - 300mm CD 1-50 - 500mm
 CD 1-35 - 350mm CD 1-60 - 600mm

FINISHES
 STAINLESS: SSS, PSS

DOOR HANDLES

CD 2-30



CD 2 SPECIFICATION: 32mm dia. Tubular "D" Pull Handles, back to back fix.
 Specify hole centres as required.
 Specify Tube diameter 25mm and 32mm.
 Specify finish required.

Note: Single sided handle CD 1. Refer Drawing 5-06

SIZES (CENTRE TO CENTRE)

CD 2-30 - 300mm CD 2-50 - 500mm

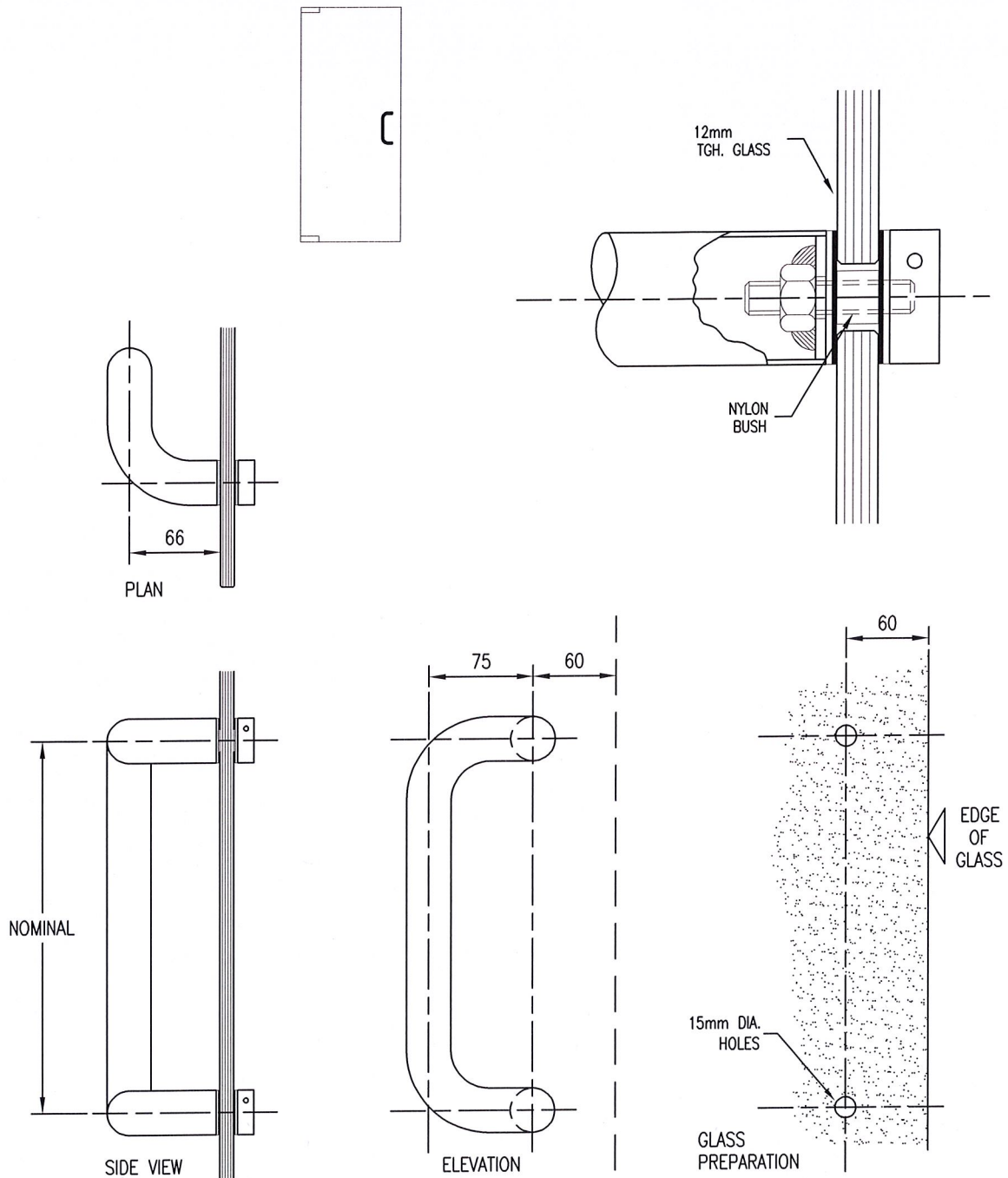
CD 2-35 - 350mm CD 2-60 - 600mm

FINISHES

STAINLESS: SSS, PSS

DOOR HANDLES

CD 3-30



CD 3 SPECIFICATION: 32mm dia. Tubular Offset "D" Pull. single side fix with Buttons. Specify hole centres as required.
Specify Tube diameter 25mm and 32mm.
Specify finish required.

Note: Back to Back handle CD 4. Refer Drawing 5-10

SIZES (CENTRE TO CENTRE)

CD 3-30 - 300mm CD 3-50 - 500mm

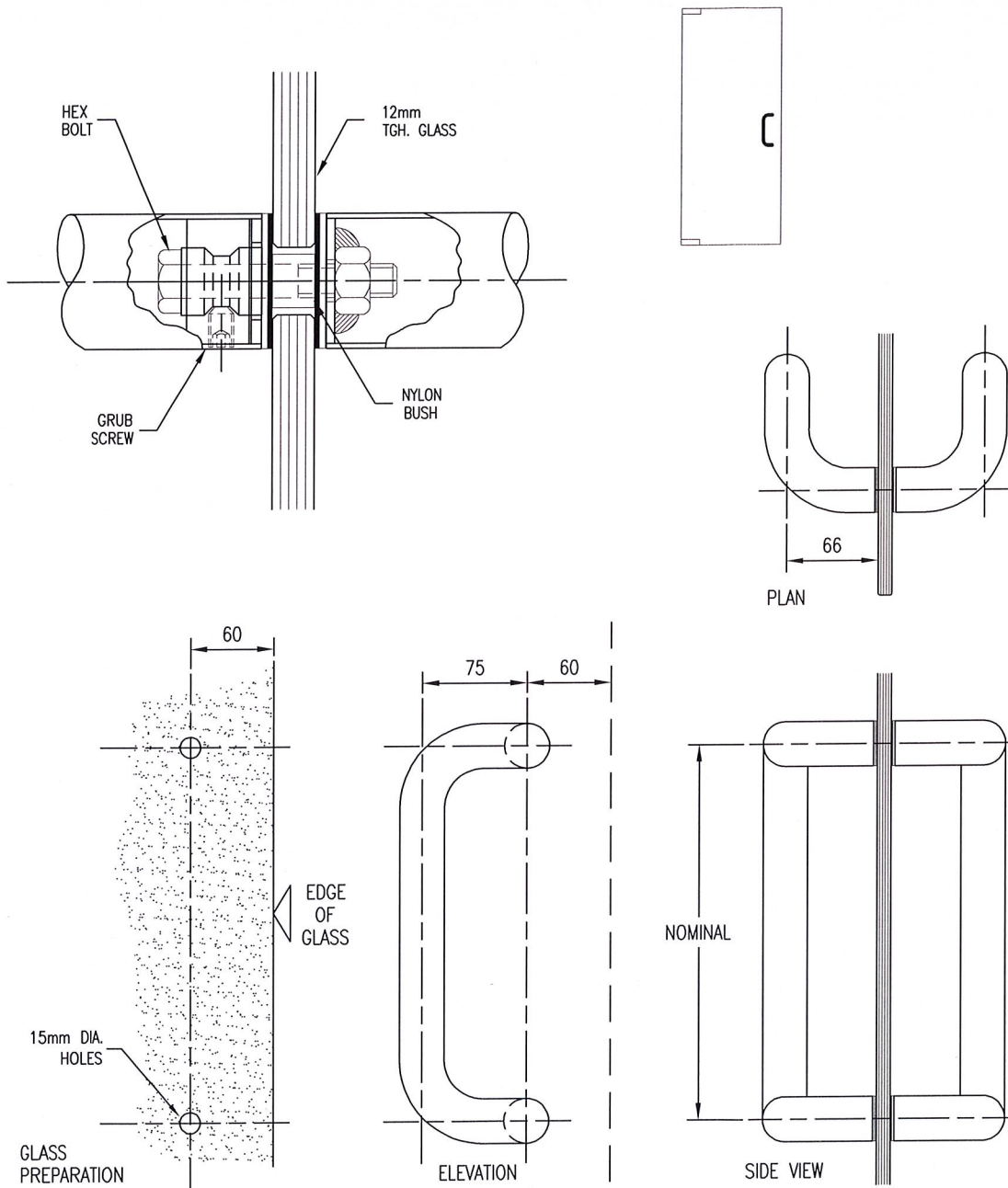
CD 3-35 - 350mm CD 3-60 - 600mm

FINISHES

STAINLESS: SSS, PSS

DOOR HANDLES

CD 4-30



CD 4 SPECIFICATION: 32mm dia. Tubular Offset "D" Pull Handles, back to back fix. Specify hole centres as required. Specify Tube diameter 25mm, 32mm or 38mm. Specify finish required.

Note: Single sided handle CD 3. Refer Drawing 5-09

SIZES (CENTRE TO CENTRE)

CD 4-30 - 300mm CD 4-50 - 500mm

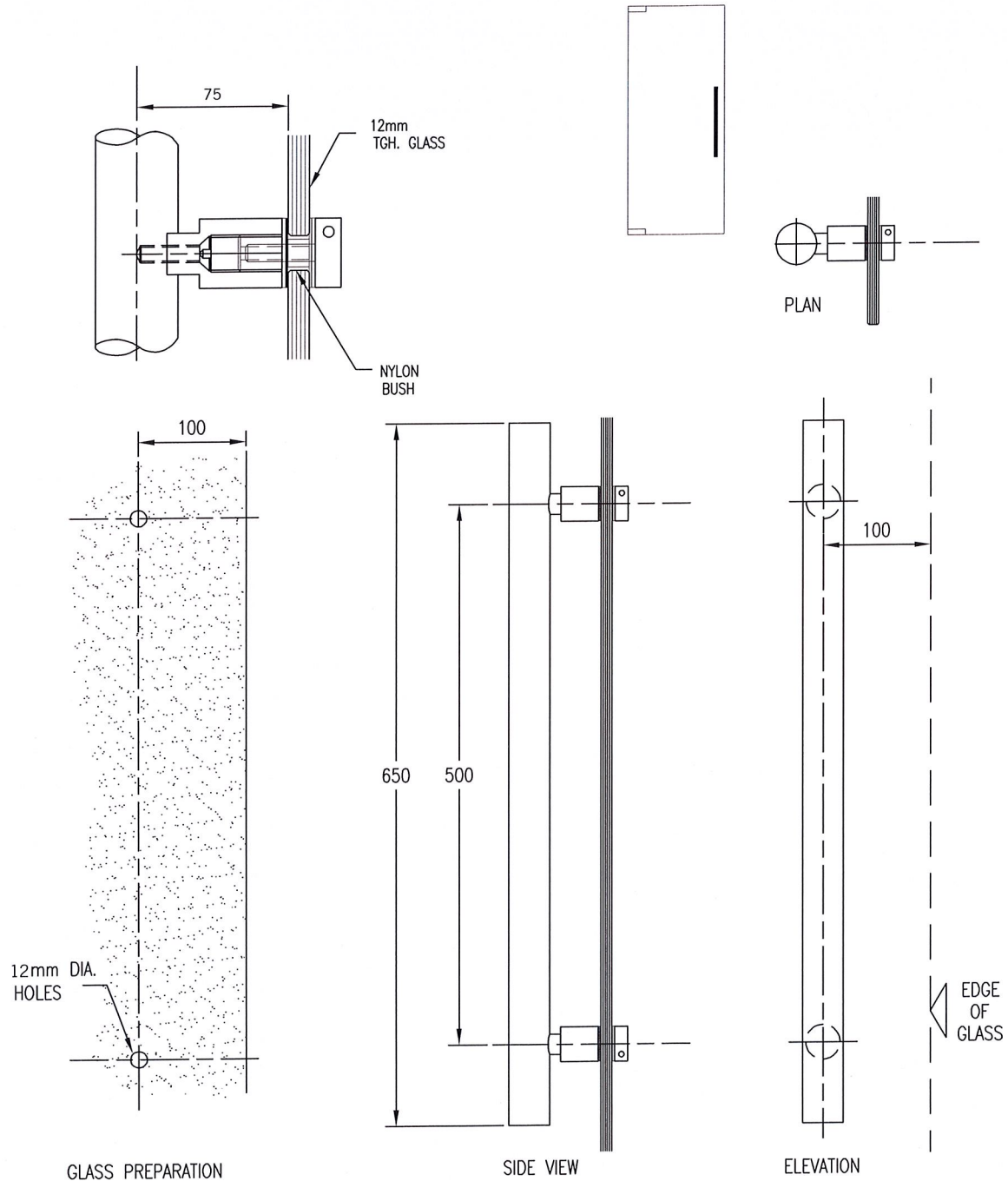
CD 4-35 - 350mm CD 4-60 - 600mm

FINISHES

STAINLESS: SSS, PSS

DOOR HANDLES

CD 27-50



CD 27-50 SPECIFICATION: 38mm dia, Tubular Pull Handle, single side fix with buttons. Specify finish required.

Note: Back to Back handle CD 28-50, Refer Drawing 5-21

SIZES (CENTRE TO CENTRE)

CD 27-50 - 500mm

CD 27L - 1000mm

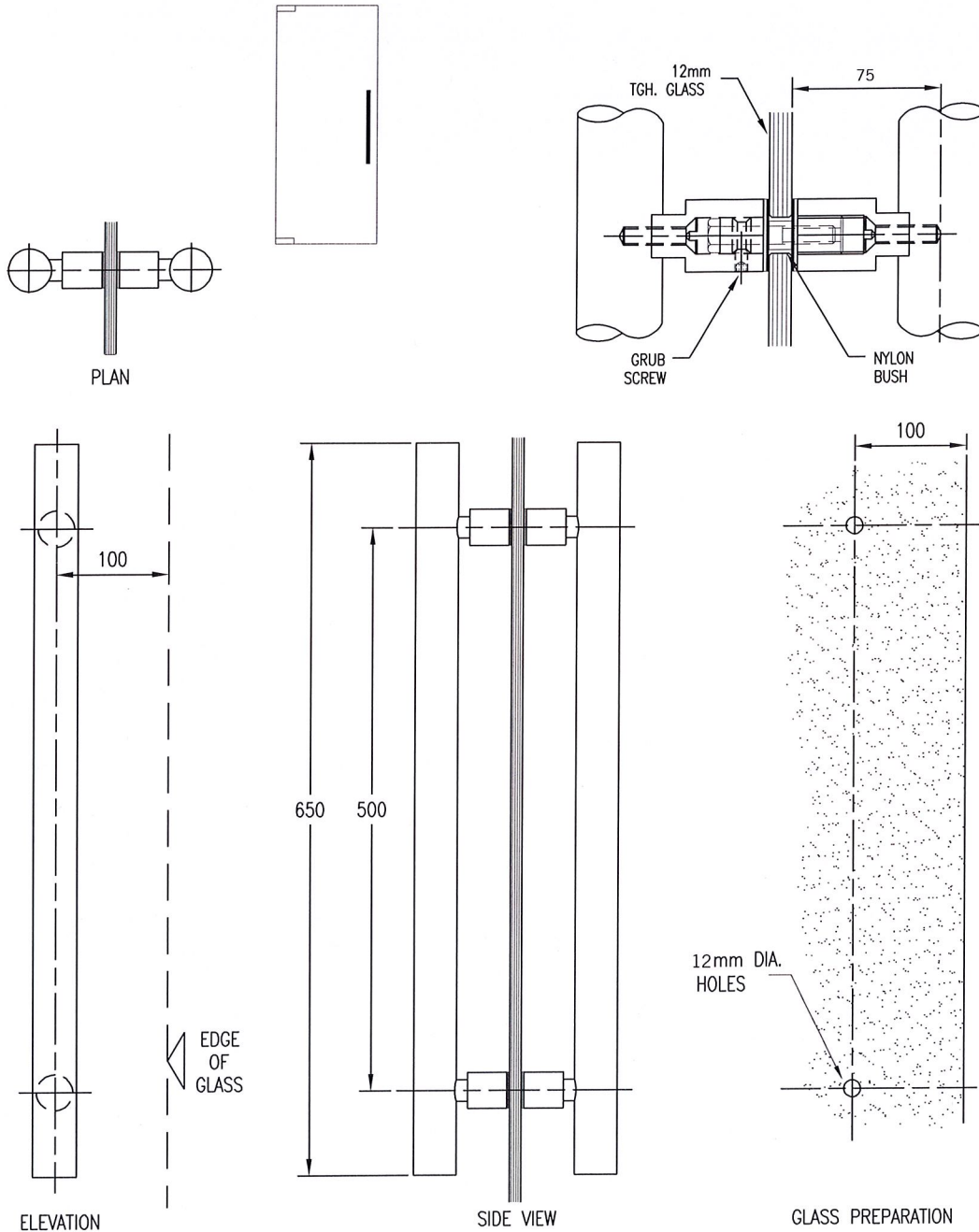
CD 27XL - 1500mm

FINISHES

STAINLESS: SSS, PSS

DOOR HANDLES

CD 28-50



CD2B-50 SPECIFICATION: 38mm dia. Tubular Pull Handle, back to back fix. Specify finish required.

Note: Single side handle CD 27-50, Refer Drawing 5-20

SIZES (CENTRE TO CENTRE)

CD 28-50 - 500mm

CD 28L - 1000mm

CD 28XL - 1500mm

FINISHES

STAINLESS: SSS, PSS