



TAL-CO SUPPLEMENTAL INSTRUCTION #18			
Project Name:	RW TOMLINSON - NEW HEAD OFFICE		
Project Location:	100 Nortel Drive, Ottawa, Ontario		
ARCH. SI #:	ASK-20, ASK-21, ASK-25	Issued By:	Chris Simpson
STRUC. SI #:	SSI #11	Date Issued:	October 24, 2016
MECH. SI #:	N/A	Revision #:	N/A
ELEC. SI #:	N/A	Revision Date:	N/A

Supplemental Instructions are issued by the Construction Manager to record a clarification or revision to the previously issued Contact Documentation as reflected by the attached information prepared by the identified Professionals.

The Construction Manager shall review the Supplemental Instruction and the attached information and issue to the affected Trade Contractors identifying the following course of action by the Trade Contractor.

Notify TAL-CO within 5 days of receipt, if the attached documents will require a change to Contract Price or Schedule.

Title: Additional Steel Support for cladding fins, four corners of building (3rd, 4th, and roof levels), SSI 011, ASK-25. Revised detailing of soffit panels at underside of 3rd floor level, ASK-20, ASK-21.

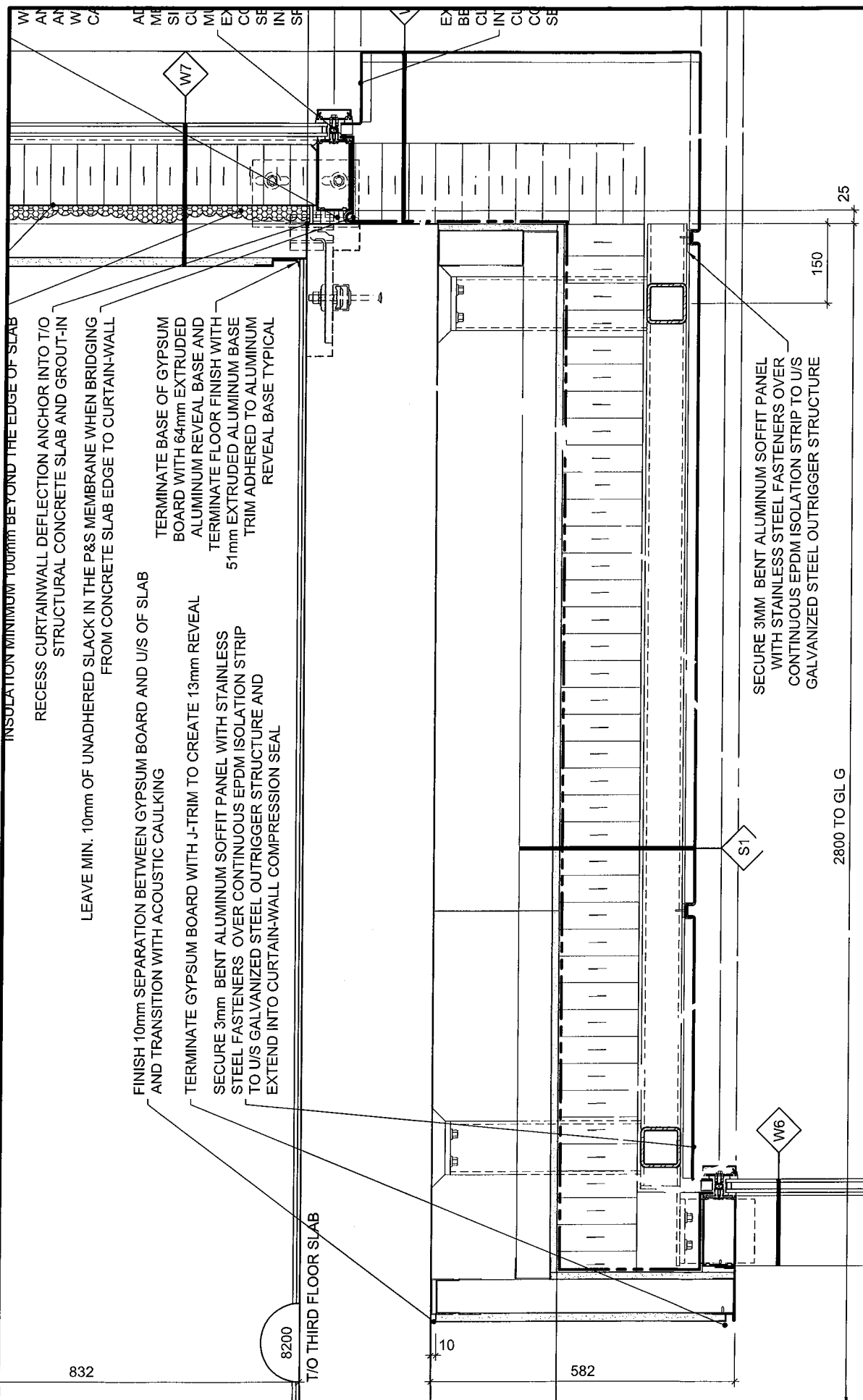
Reference: Architectural Details 10/ A-503, 13/ A-601, 13/ A-602, Structural Plans S201, S102, S103, S104.

Attachments:

- ASK-20
- ASK-21
- ASK-25
- SSI 011

Description of the Work: Provide re-inforcing steel, cast-in plates, and steel support for corner cladding detail as shown on ASK-25 (10/ A-503). Revise soffit cladding details as per ASK-20, and ASK-21.

Reason: Steel support for corner cladding extensions not previously detailed on drawings.



INSULATION MINIMUM 100mm BEYOND THE EDGE OF SLAB

RECESS CURTAINWALL DEFLECTION ANCHOR INTO T/O STRUCTURAL CONCRETE SLAB AND GROUT-IN

LEAVE MIN. 10mm OF UNADHERED SLACK IN THE P&S MEMBRANE WHEN BRIDGING FROM CONCRETE SLAB EDGE TO CURTAIN-WALL

FINISH 10mm SEPARATION BETWEEN GYPSUM BOARD AND U/S OF SLAB AND TRANSITION WITH ACOUSTIC CAULKING

TERMINATE GYPSUM BOARD WITH J-TRIM TO CREATE 13mm REVEAL

SECURE 3mm BENT ALUMINUM SOFFIT PANEL WITH STAINLESS STEEL FASTENERS OVER CONTINUOUS EPDM ISOLATION STRIP TO U/S GALVANIZED STEEL OUTRIGGER STRUCTURE AND EXTEND INTO CURTAIN-WALL COMPRESSION SEAL

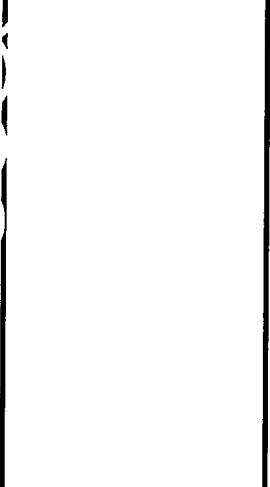
TERMINATE BASE OF GYPSUM BOARD WITH 64mm EXTRUDED ALUMINUM REVEAL BASE AND ALUMINUM FLOOR FINISH WITH 51mm EXTRUDED ALUMINUM BASE TRIM ADHERED TO ALUMINUM REVEAL BASE TYPICAL

SECURE 3MM BENT ALUMINUM SOFFIT PANEL WITH STAINLESS STEEL FASTENERS OVER CONTINUOUS EPDM ISOLATION STRIP TO U/S GALVANIZED STEEL OUTRIGGER STRUCTURE

DATE:	2016/10/17
SCALE:	1:10
DRAWN BY:	JK
JOB No:	574-15
DRAWING No:	ASK-20

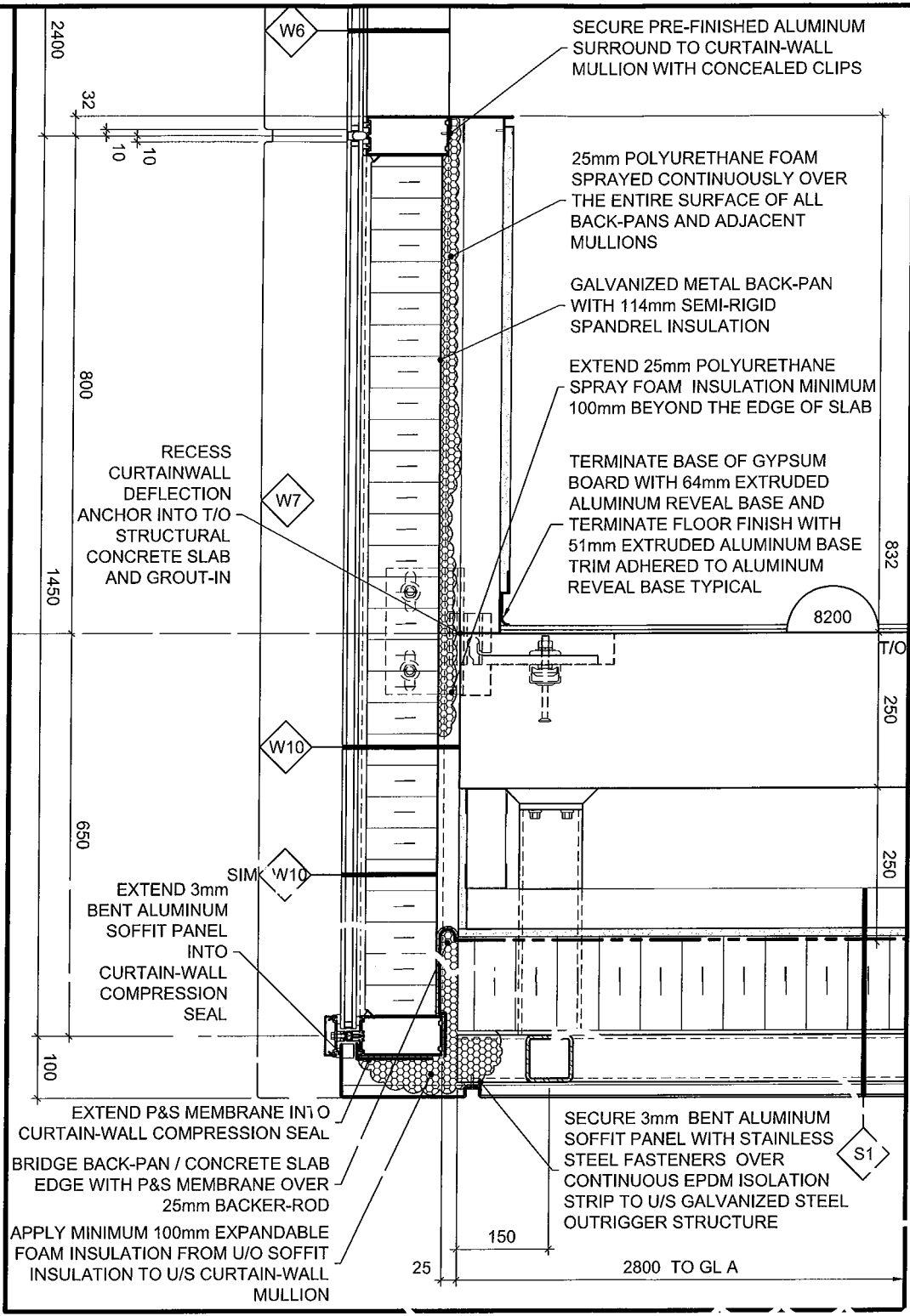
PROJECT:
TOMLINSON NEW BUILDING

DRAWING TITLE:
REFERENCE PART DETAIL 13/A601



Christopher Simmonds Architect

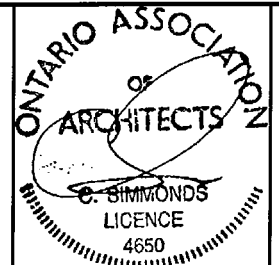
THE ANNEX/4600 ELLES ST. OTTAWA ON K1R 6S3
 613.687.7888 PHONE / 613.567.7528 FAX
 csaarchitect.com



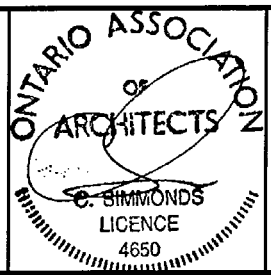
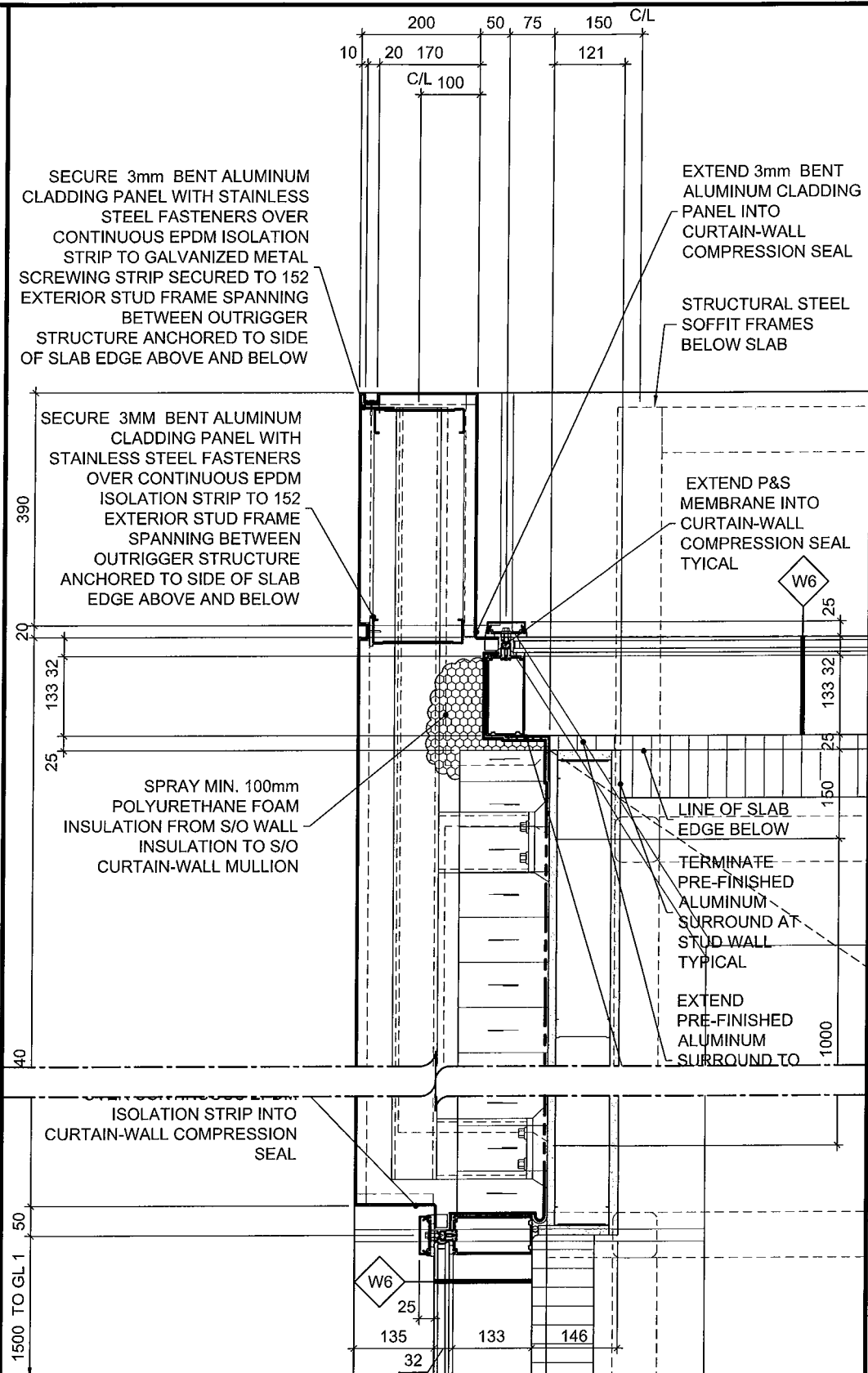
13 N/S B/O C'WALL IN OPEN OFFICE DETAIL
 A602 SCALE = 1:10



THE ANNEX/466 CECLES ST. OTTAWA ON K1R 6S1
 613.567.7888 PHONE / 613.567.7528 FAX
 csarchitect.com



PROJECT: TOMLINSON NEW BUILDING	DATE: 2016/10/17
DRAWING TITLE: REFERENCE DETAIL AS INDICATED	SCALE: AS INDICATED
	DRAWN BY: JK
	JOB No: 574-15
	DRAWING No: ASK-21



PROJECT:
TOMLINSON NEW BUILDING

DRAWING TITLE:
REFERENCE PART DETAIL 10/A503

DATE: 2016/10/24

SCALE: AS INDICATED

DRAWN BY: JK

JOB No: 574-15

DRAWING No: ASK-25

STRUCTURAL SITE INSTRUCTION



Cleland Jardine Engineering Ltd., 580 Terry Fox Drive, Suite 200, Kanata, Ontario, K2L 4B9, FAX (613) 591-1703, Tel. (613) 591-1533

TO: TALCO Building Innovations DATE: October 24, 2016

ATTENTION: Chris Simpson EMAIL: csimpson@tal-co.com

PROJECT: Tomlinson – New Building PROJECT No.: 15-0179

ISSUED BY: Brian Johnson, P.Eng BDS PAGES (Incl this one): 5

STRUCTURAL SITE INSTRUCTION No.: 011

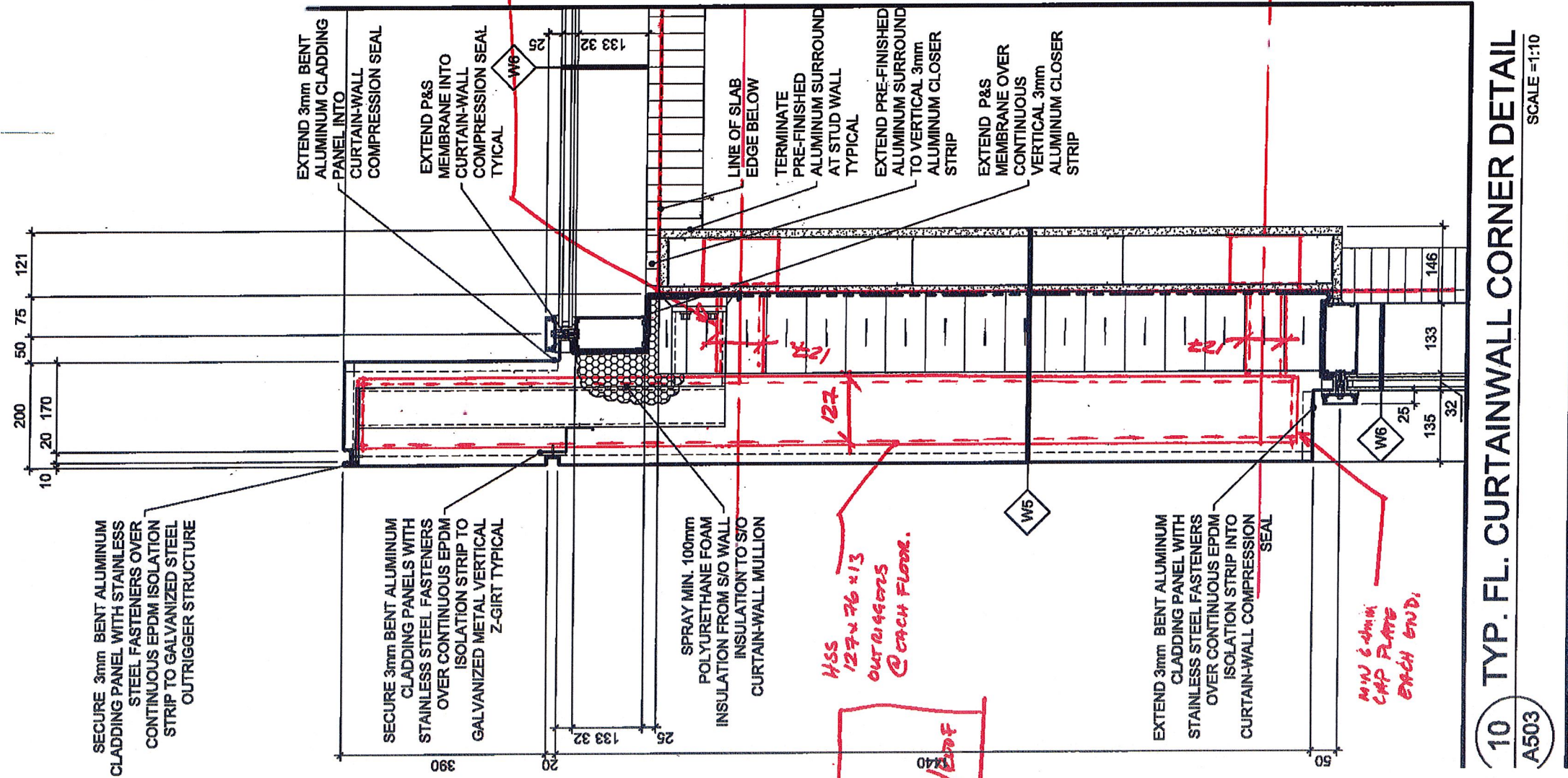
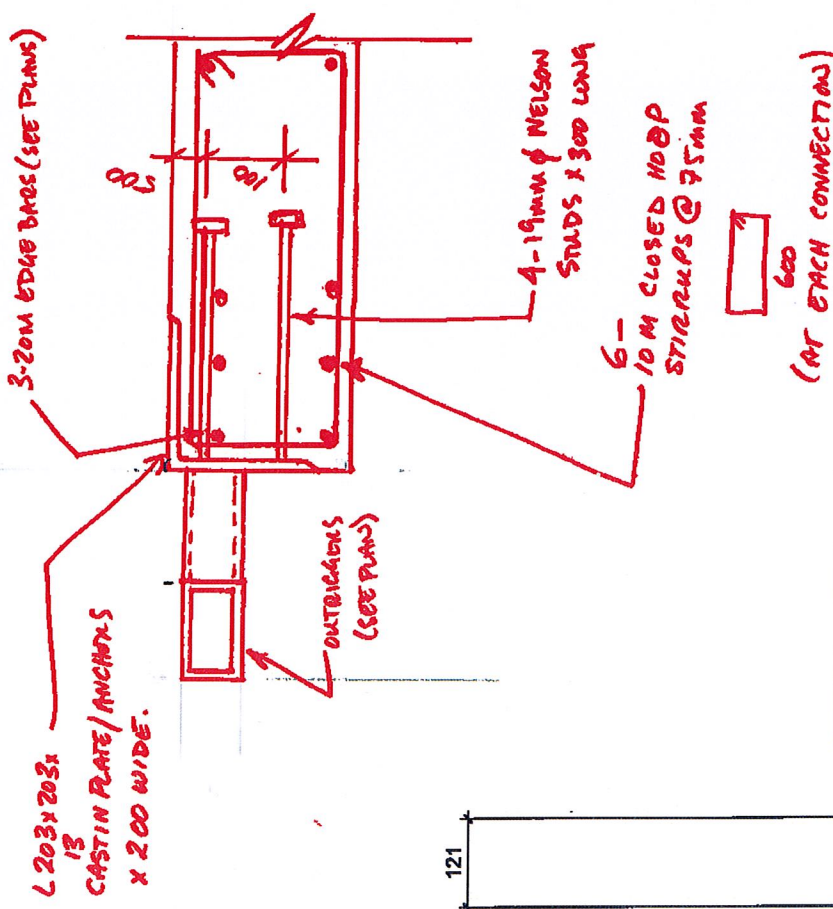
Affected Drawings: S201, S102, S103, S104

References:

Architectural drawings 10/A503.

Information to be Clarified:

Additional steel anchors/supports are required to support the cladding fins in the 4 corners of the building at the 3rd, 4th, and Roof slabs. Contractor is to provide the anchorages as attached. Careful attention is to be paid to the additional rebar to be placed in the area of the anchor plates. See sketches SSI-S11-SK1 to SK4



10 TYP. FL. CURTAINWALL CORNER DETAIL
A503 SCALE = 1:10

12 SECTION: CORNER OUTRIGGERS @ FINS: 3RD/4TH / ROOF.
(PLAN DETAIL OF ELEMENTS)
S201

The Contractor shall check and verify all dimensions on site. This drawing is not to be used for construction unless approved and signed by the Engineer. Do not scale drawings. Copyright reserved. This drawing is the exclusive property of Cleland Jardine Engineering Ltd.

1. CONCRETE SLAB/STAIR/STAIRCASE

1.1 COVERS: BOT. = 25mm CLEAR TO TIL
TOP = 25mm CLEAR TO TIL

1.2 REINFORCING STEEL LAYOUT:
REINFORCING TO BE SIMILAR TO 3rd FLOOR UNL

1.3 MINIMUM REINFORCING:
BOT. CS: 20M @ 250 (+ HOOK AT CANTILEVER ENDS)
TOP: 16M @ 250 (+ HOOK AT CANTILEVER ENDS)
TOP/EXT. CS: 20M @ 250
TOP/INT. CS: 20M @ 250 (+ HOOK AT DISCONTINUOUS ENDS) (EXTEND 300 INTO CONTIGUOUS ENDS)
MS: 16M @ 300 (+ HOOK AT DISCONTINUOUS ENDS) (EXTEND 300 INTO CONTIGUOUS ENDS)

1.4 INTERIOR STEEL @ COLUMNS:
PROVIDE ADD. BOTTOM STEEL AT ALL COLUMNS UNL

INTERIOR COLUMN: 3-20M @ 1000

EXTERIOR COLUMN: 3-20M @ 1000

EXTERIOR CORNER: 4-20M @ 1000

2. FLAT SLAB DIMENSIONS UNL

SLAB THICK: 200
SLAB BANDS: 3000/3000/2000 UNL
FINISH: 200 UNL
CONCRETE: C30/37 UNL

WHERE "W" WALL OR COLUMN > 10 MPa (+) SLAB: PROVIDE FLEECHE OF CONCRETE AT COLUMNS/BEARINGS THAT MATCHES STRENGTH OF VERTICAL ELEMENT. EXTEND FLEECHE TO MIN. OF 600mm ALL AROUND VERTICAL ELEMENT.

3. DESIGN LOADS

SLAB:	350 CONG.	6.13 kPa	300 CONG.:	7.20 kPa
240 CONG.:	5.00 kPa	240 CONG.:	5.88 kPa	
200 CONG.:	4.00 kPa	200 CONG.:	4.76 kPa	
150 CONG.:	3.00 kPa	150 CONG.:	3.64 kPa	
100 CONG.:	2.00 kPa	100 CONG.:	2.52 kPa	
50 CONG.:	1.00 kPa	50 CONG.:	1.40 kPa	
0 CONG.:	0.00 kPa	0 CONG.:	0.28 kPa	

4. SLEEVING/OPENING

CONTRACTOR IS REQUIRED TO SUBMIT SLEEVING AND OPENING DRAWINGS (SCALE) TO ENGINEER FOR REVIEW A MINIMUM OF 30 WORKING DAYS PRIOR TO COMM. PLACEMENT. DRAWINGS ARE TO DETAIL AND DIMENSION ALL ELEMENTS PASSING THROUGH SLAB. ANY SLEEVING/OPENINGS IN SLAB ELEMENTS NOT INDICATED ON REVIEWED DRAWINGS MAY BE REMOVED BY ENGINEER ON SITE AT CONTRACTOR'S OWN EXPENSE. NO CONCRETE IS TO BE PLACED PRIOR TO RECEIVING WRITTEN APPROVAL OF ENGINEER. SEE ALSO SHOP DETAILS OF DRAWINGS FOR DETAILS. DRAWING SHOP DRAWING REVIEW ENGINEER MAY REMOVE ANY WALL CORNER FROM SLAB NOT BEING SATISFYING TYPICAL REQUIREMENTS AT NO ADDITIONAL COST TO THE PROJECT.

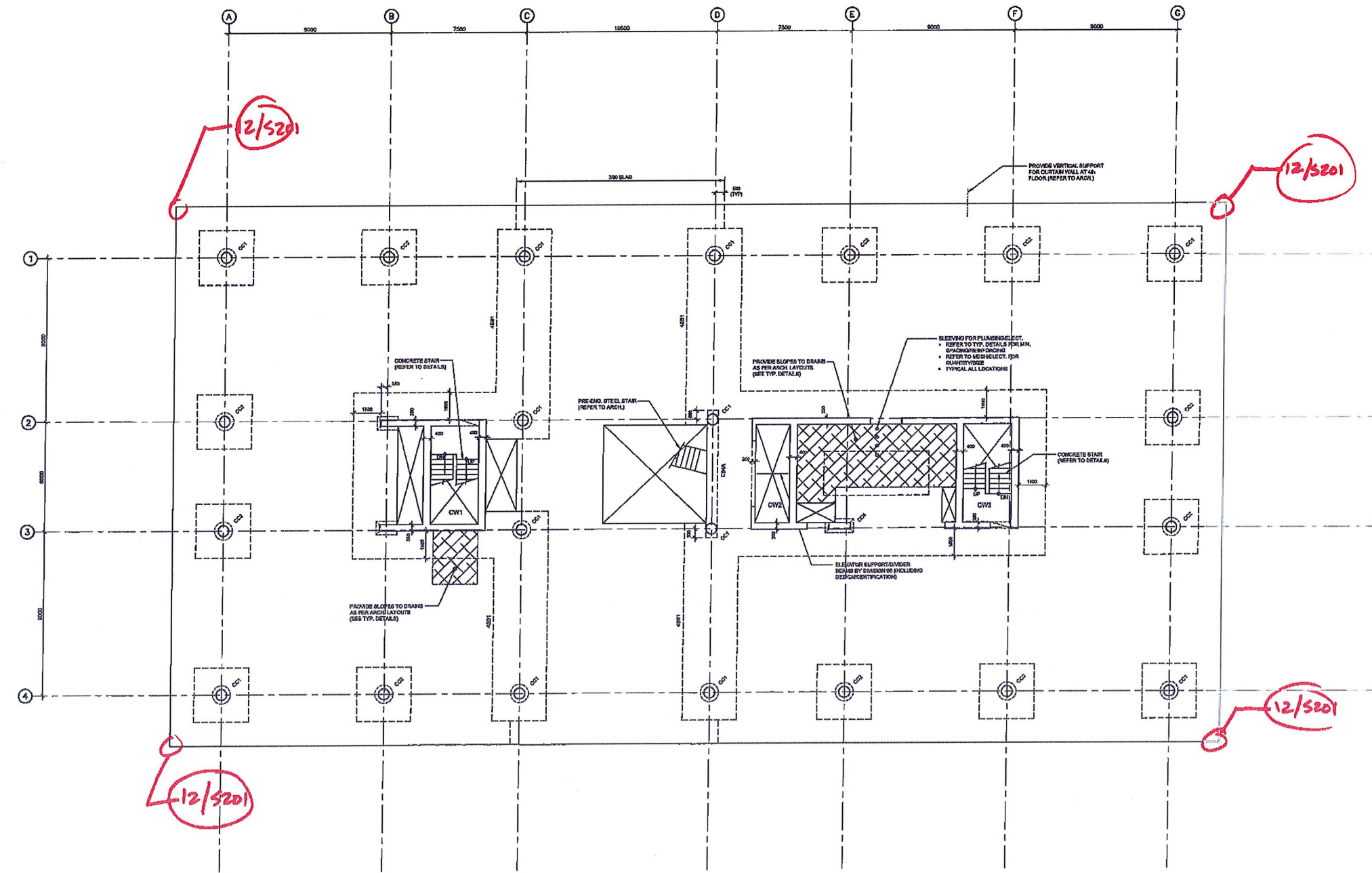
5. EXTENSION EDGE CONNECTIONS:
UNLESS OTHERWISE NOTED ON PLANS, PROVIDE COLUMN STYP TOP/INT BASE AT EXTENSION EDGES, WITH REDUCTION IN BAR SPACING OF 50mm (2") BAR SIZE TO REMAIN AS NOTED.
W. CORNERS: 20M @ 250 B, CORNERS: 20M @ 200 B

6. REINFORCING:
IN PORTIONS OF SLAB CONTAINING SLAB BANDS LOWER LONGITUDINAL BOTTOM STEEL TO BOTTOM OF SLAB BAND. PROVIDE TYPICAL BOTTOM STEEL COVER REQUIREMENTS UNL.

7. LANDING SUBSISTS:
ALL LANDING ELEMENTS (STAIR/WALL/SWITCH/METAL PANELS) TO BE SUPPORTED VERTICALLY/LATERALLY AT EACH FLOOR LEVEL DESIGN FOR THESE ELEMENTS THAT ARE SHOWN SUPPORTING MULTI FLOORS AT A SINGLE LEVEL WILL BE DETAIL AND REVISIONS/CONTRACTED AT CONTRACTOR'S OWN COST.

8. REFER TO 6000 SERIES DRAWINGS FOR CAGEING OF SLAB.

9. ADD. 3-20M T & B @ FACE OF SLAB OPENINGS TO BE PROVIDED.



FOURTH FLOOR PLAN
CLJ 11/18

No.	DATE	REVISIONS	BY
11	AUG 8/18	ISSUED FOR BUILDING PERMIT	BH
10	JULY 14/18	RE-ISSUED FOR EXCAVATION FOUNDATION CONSTRUCTION	SH
9	JULY 7/18	ISSUED FOR EXCAVATION FOUNDATION CONSTRUCTION	J.
8	JULY 7/18	ISSUED FOR SUPERSTRUCTURE TENDER	J.
7	JULY 7/18	ISSUED FOR SUPERSTRUCTURE PERMIT	J.
6	MAY 2/18	ISSUED FOR FOUNDATION PERMIT	BH
5	MAY 17/18	ISSUED FOR 80% REVIEW	BH
4	APR 24/18	ISSUED FOR 30% REVIEW	BH
3	APR 7/18	ISSUED FOR 20% REVIEW - ISSUED LATER	BH
2	JAN 22/18	ISSUED FOR 20% REVIEW	BH
1	DEC 17/15	ISSUED FOR PRELIMINARY FRAMED	BH

PROJECT NORTH

STAMP

CLELAND JARDINE
ENGINEERING LTD

1000 SHEPPARD AVENUE EAST, SUITE 100
SCARBOROUGH, ONTARIO M1S 1T5
CANADA TEL: 416-291-1133

TOMLINSON
PROJECT

**TOMLINSON
NEW BUILDING**

DRAWING

FOURTH FLOOR PLAN

DESIGN	S.J.L.	DRAWING NO.
DESIGNED:	B.J./M.A.L.A.	S103
APPROVED:	B.J.	
DATE:	OCT. 2018	
SCALE:	1:100	
PROJECT NO.:	16-0179	

