



TAL-CO SUPPLEMENTAL INSTRUCTION #16			
Project Name:	RW TOMLINSON - NEW HEAD OFFICE		
Project Location:	100 Nortel Drive, Ottawa, Ontario		
ARCH. SI #:	ASK-17, WaboVIP	Issued By:	Chris Simpson
STRUC. SI #:	N/A	Date Issued:	October 26, 2016
MECH. SI #:	N/A	Revision #:	N/A
ELEC. SI #:	N/A	Revision Date:	N/A

Supplemental Instructions are issued by the Construction Manager to record a clarification or revision to the previously issued Contact Documentation as reflected by the attached information prepared by the identified Professionals.

The Construction Manager shall review the Supplemental Instruction and the attached information and issue to the affected Trade Contractors identifying the following course of action by the Trade Contractor.

Notify TAL-CO within 5 days of receipt, if the attached documents will require a change to Contract Price or Schedule.

**Title:** Expansion Joint Detail at Bridge Structure, 2nd & 3rd Floors, Grid D.

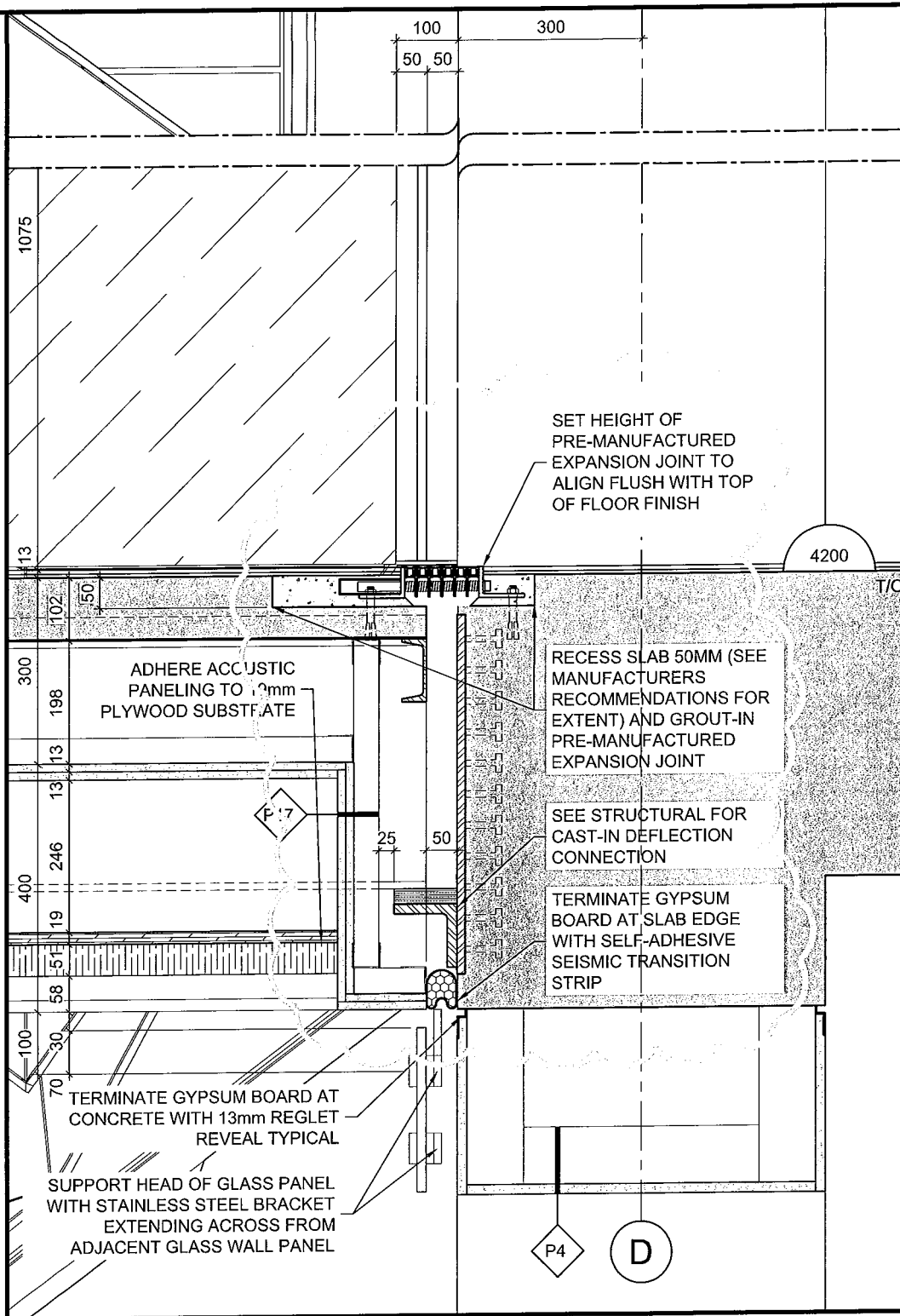
**Reference:** Architectural and Structural Drawings

**Attachments:**

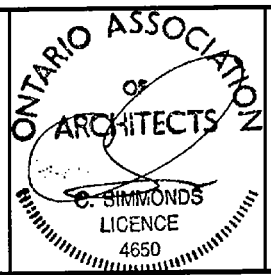
- ASK-17
- WaboVip - Cut Sheet

**Description of the Work:** Provide pocket in slab edge to accommodate installation of attached expansion joint product.

**Reason:** Confirmation of expansion joint product to be used at this location.



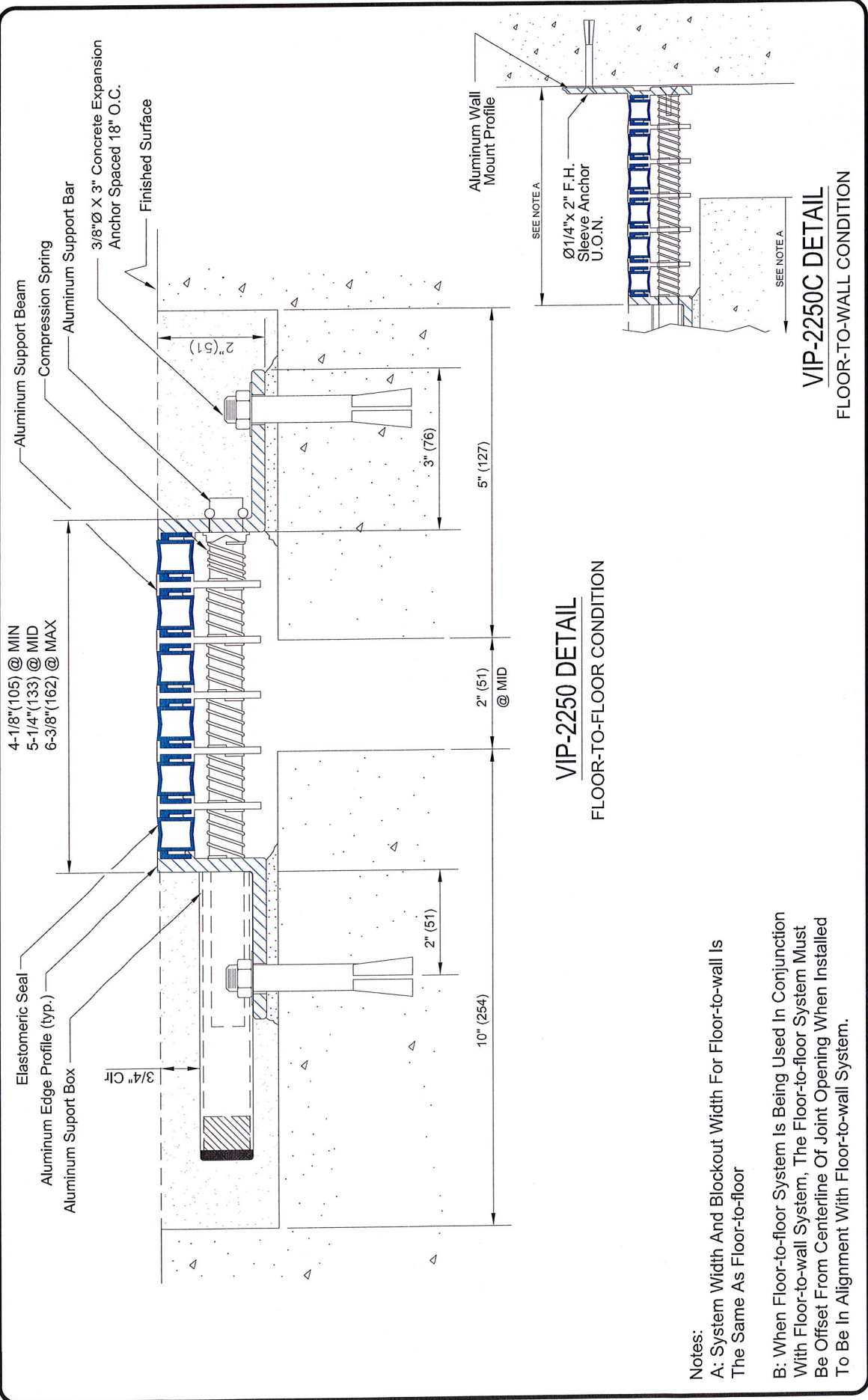
**5** LARGE POD BRIDGE CONNECTION DETAIL  
 A604 SCALE = 1:10



PROJECT:  
 TOMLINSON NEW BUILDING

DRAWING TITLE:  
 REFERENCE DETAIL AS INDICATED

DATE: 2016/10/13  
 SCALE: AS INDICATED  
 DRAWN BY: JK  
 JOB No: 574-15  
 DRAWING No: **ASK-17**



VIP-2250C DETAIL  
FLOOR-TO-WALL CONDITION

VIP-2250 DETAIL  
FLOOR-TO-FLOOR CONDITION

- Notes:
- A: System Width And Blockout Width For Floor-to-wall Is The Same As Floor-to-floor
  - B: When Floor-to-floor System Is Being Used In Conjunction With Floor-to-wall System, The Floor-to-floor System Must Be Offset From Centerline Of Joint Opening When Installed To Be In Alignment With Floor-to-wall System.

REVISION NO:	-
SHEET NO:	5
DRAWING NO:	C-95056



Watson Bowman Acme Corp.  
95 Pineview Drive Amherst, NY 14228  
phone: (716) 691-7566 fax: (716) 691-9239  
www.wbacorp.com



Information provided herein, including but not limited to, any drawing, design, photograph, graphic, or statement(s) ("Materials") are proprietary and the property of Watson Bowman Acme Corporation ("Company"). Reproduction, translation, or reduction to any electronic medium or machine readable form, in whole or part, is strictly prohibited, except for the express purpose for which it has been furnished, without prior written consent of Company. All Materials contained herein are provided by Company for information purposes only. Company reserves the right to amend or withdraw any information contained in the Materials without notice. All technical or other advice by Company, whether verbal or written, concerning products, or the use of products in specific situations ("Advice") is given by Company and is used at the Users own risk.

PROJECT NAME:	-
PROJECT LOCATION:	-
DRAWING DESCRIPTION:	WaboVIP
DATE:	12/14/2006
MODEL:	VIP