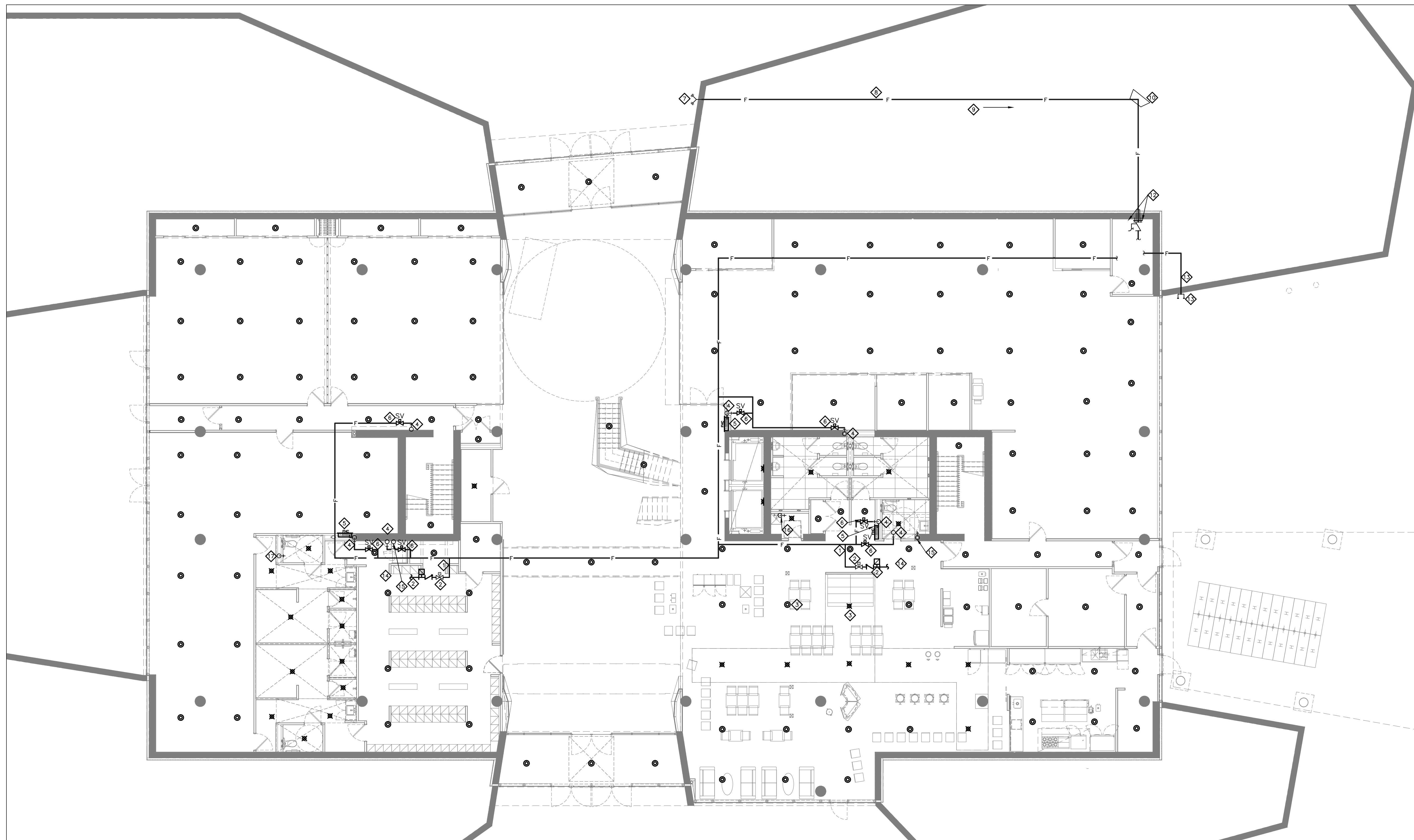


An exact copy of all working documents including, without limitation, the original of the present document or plan is kept on file by J.R.P. Engineering. Any modification carried out to this document or plan or to accompanying documents without written authorization by the engineer is prohibited.

Authorized modifications must be signed and sealed by an engineer and this engineer will be completely responsible for these modifications. J.R.P. Engineering is not and will not be responsible for the consequences of these modifications or for modifications carried out without its consent.



1 GROUND FLOOR PLAN – FIRE PROTECTION
M131 SCALE 1:100

DRAWING NOTES:

- 1 TYPICAL: SPRINKLER ZONE CONNECTION, REFER TO FIRE PROTECTION RISER DIAGRAM.
- 2 TYPICAL: PROVIDE NEW SUPERVISED ISOLATION VALVE, CHECK VALVE AND FLOW SWITCH. PROVIDE ALL WIRING TO FIRE ALARM PANEL AND VERIFICATION BY BASE BUILDING FIRE ALARM CONTRACTOR.
- 3 TYPICAL: PROVIDE NEW SPRINKLER HEAD C/W ALL PIPING AND FITTINGS AS INDICATED TO SUIT NFPA-13 REQUIREMENTS.
- 4 TYPICAL: STANDPIPE, REFER TO FIRE PROTECTION RISER DIAGRAM.
- 5 TYPICAL: PROVIDE CLASS III FIRE HOSE CABINET.
- 6 TYPICAL: PROVIDE NEW SUPERVISED VALVE AND WIRING TO FIRE ALARM PANEL.
- 7 PROVIDE NEW WALL MOUNTED FIRE DEPARTMENT CONNECTION WITH IDENTIFICATION PLATES AND ALL ACCESSORIES AS PER NFPA-14.
- 8 PROVIDE NEW BURIED FIRE DEPARTMENT CONNECTION PIPING TO PIPING INSIDE BUILDING. NEW UNDERGROUND PIPING TO BE PVC (AWWA C900), PE (AWWA C906) OR PVC0 (AWWA C909). ALL PIPING MATERIALS, FITTINGS, CONNECTIONS AND ALL INSTALLATION DETAILS TO BE IN ACCORDANCE WITH NFPA-24 REQUIREMENTS. ALL GRANULAR BASE AND SUB-BASE MATERIALS TO BE AS PER CITY OF OTTAWA STANDARD.
- 9 SLOPE ALL NEW BURIED PIPING TOWARDS CHECK VALVE WITH BALL DRIP. LOCATED IN WATER ENTRY ROOM, AS REQUIRED TO ENSURE PROPER DRAINING OF FIRE DEPARTMENT CONNECTION PIPING WHEN NOT IN USE.
- 10 PROVIDE NEW THRUST BLOCK. REFER TO CITY OF OTTAWA DETAIL DRAWING W25.3 CONCRETE THRUST BLOCKS FOR PVC AND DI PIPE. 400MM AND UNDER. DETAILS AND INSTALLATION TO COMPLY WITH NFPA-24 REQUIREMENTS.
- 11 PROVIDE NEW PIPING PENETRATION THROUGH BUILDING WALL AND NEW FLANGED CONNECTION TO NEW STEEL PIPING. APPROXIMATE PROJECTION INTO BUILDING INTERIOR 120 MM TO BE CONFIRMED ON SITE. ALL MATERIALS AND DETAILS OF INSTALLATION TO BE AS PER NFPA-24 REQUIREMENTS. PROVIDE NEW PIPE WALL SLEEVE. REPAIR AND SEAL BUILDING WALL UPON COMPLETION OF NEW PIPING INSTALLATION.
- 12 PROVIDE NEW ANCHORING OF NEW FLANGED CONNECTION TO BUILDING WALL WITH FOUR (4) 13MM THREADED RODS AND WEDGE ANCHORS.
- 13 PROVIDE NEW FIRE PUMP TESTING CONNECTION AND INSTALL AT BUILDING WALL. PROVIDE NEW BURIED PIPING CONNECTION TO TEST FITTING. SLOPE ALL BURIED PIPING AS REQUIRED TO ENSURE PROPER DRAINING.
- 14 TYPICAL: SPRINKLER SYSTEM TEST CONNECTION WITH VALVES AND DRAIN AS PER TYPICAL DETAIL.
- 15 SPRINKLER TEST DRAIN RISER.
- 16 EXTEND SPRINKLER TEST DRAIN PIPING AND TERMINATE WITH DISCHARGE TO JANITOR SINK.
- 17 PROVIDE 100# HUB DRAIN WITH 75# P-TRAP AND CONNECTION TO SANITARY PIPING SYSTEM. PROVIDE TRAP PRIMING FROM D.C.W. SUPPLY TO TOILET. EXTEND SPRINKLER TEST DRAIN PIPING AND TERMINATE WITH DISCHARGE INTO HUB DRAIN. PROVIDE ACCESS DOOR IN PLUMBING CHASE WALL AS REQUIRED TO ENABLE ACCESS TO HUB DRAIN AND PRIMING PIPING.

NOTE:
SPRINKLER CONTRACTOR TO PROVIDE ENGINEER STAMPED SPRINKLER DRAWINGS AND HYDRAULIC CALCULATIONS. SPRINKLER SYSTEM TO BE DESIGNED TO NFPA 13 STANDARD, LATEST EDITION.

No	DESCRIPTION	DATE
1	ISSUED FOR CONSTRUCTION	NOV. 22 2016
0	ISSUED FOR PERMIT	AUG. 05 2016

REVISIONS



Client:
TOMLINSON
5597 POWER RD
OTTAWA, ON
K1G 3N4

Project:
TOMLINSON
NEW BUILDING
CITIGATE, OTTAWA

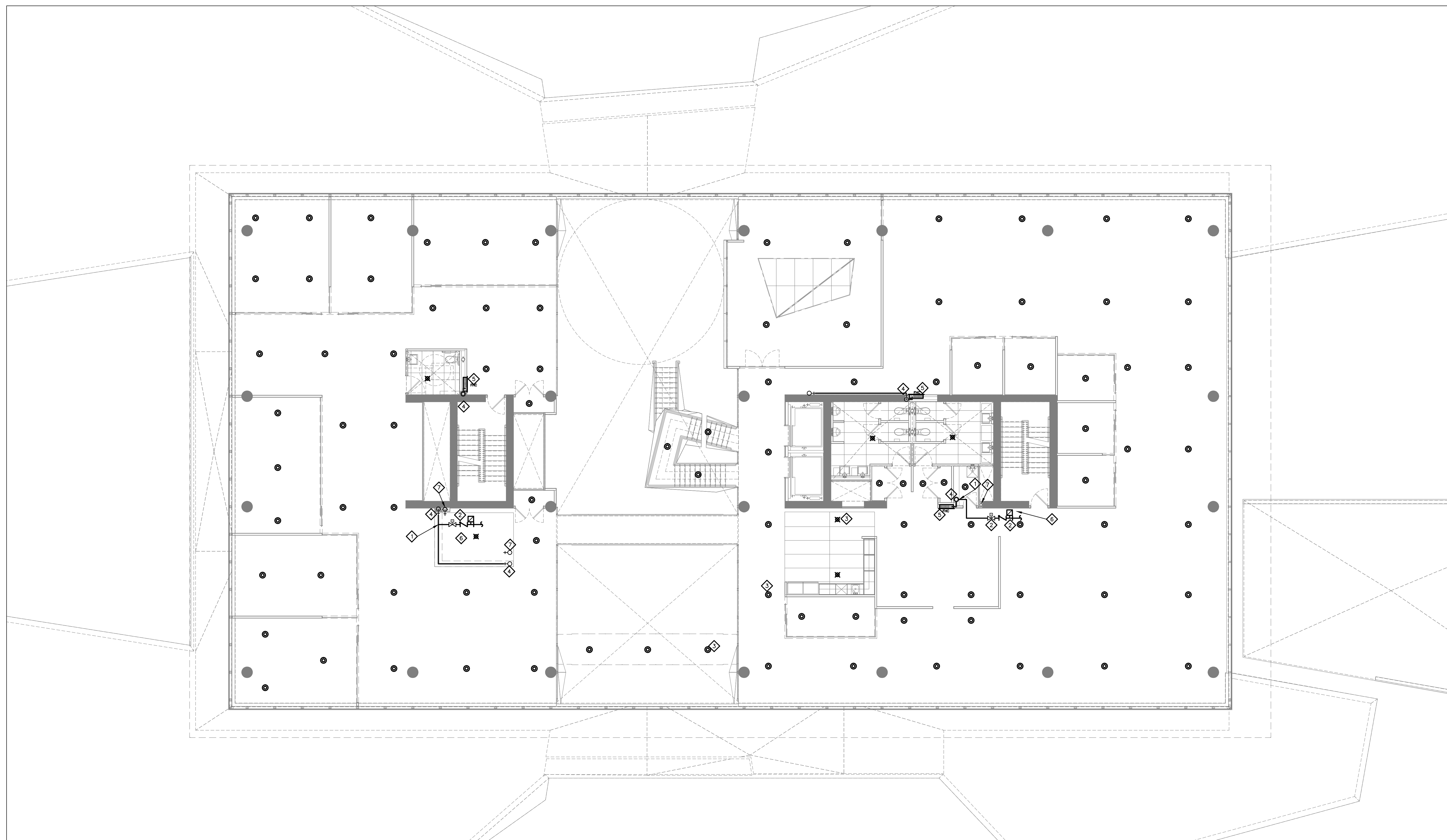
Drawing title:
**FIRE PROTECTION
GROUND FLOOR PLAN**

scale:	AS SHOWN	drawn by:	M.M.K.
designed by:	M.M.K.	reviewed by:	J.R.P.
approved by:	J.R.P.	date:	MAY 2016

project no.:	100-16L	drawing no.:	M-131
revision:	1		

An exact copy of all working documents including, without limitation, the original of the present document or plan is kept on file by J.R.P. Engineering any modification carried out to this document or plan or to accompanying documents without written authorization by the engineer is prohibited.

Authorized modifications must be signed and sealed by an engineer and this engineer will be completely responsible for these modifications. J.R.P. Engineering is not and will not be responsible for the consequences of these modifications or for modifications carried out without its consent.



1 SECOND FLOOR PLAN – FIRE PROTECTION
E102 SCALE 1:100

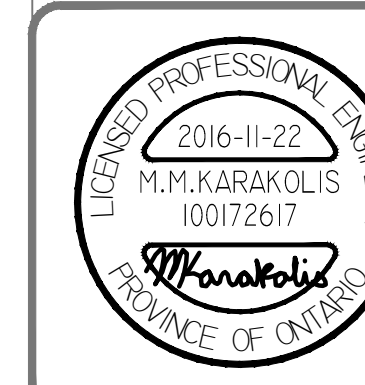
DRAWING NOTES:

- ① TYPICAL: SPRINKLER ZONE CONNECTION, REFER TO FIRE PROTECTION RISER DIAGRAM.
- ② TYPICAL: PROVIDE NEW SUPERVISED ISOLATION VALVE, CHECK VALVE AND FLOW SWITCH. PROVIDE ALL WIRING TO FIRE ALARM PANEL AND VERIFICATION BY BASE BUILDING FIRE ALARM CONTRACTOR.
- ③ TYPICAL: PROVIDE NEW SPRINKLER HEAD C/W ALL PIPING AND FITTINGS AS INDICATED TO SUIT NFPA-13 REQUIREMENTS.
- ④ TYPICAL: STANDPIPE, REFER TO FIRE PROTECTION RISER DIAGRAM.
- ⑤ TYPICAL: PROVIDE CLASS III FIRE HOSE CABINET.
- ⑥ TYPICAL: SPRINKLER SYSTEM TEST CONNECTION WITH VALVES AND DRAIN AS PER TYPICAL DETAIL.
- ⑦ SPRINKLER TEST DRAIN RISER.

NOTE:
SPRINKLER CONTRACTOR TO PROVIDE ENGINEER STAMPED SPRINKLER DRAWINGS AND HYDRAULIC CALCULATIONS.
SPRINKLER SYSTEM TO BE DESIGNED TO NFPA 13 STANDARD, LATEST EDITION.

No	DESCRIPTION	DATE
1	ISSUED FOR CONSTRUCTION	NOV. 22 2016
0	ISSUED FOR PERMIT	AUG. 05 2016

REVISIONS



Client:
TOMLINSON
5597 POWER RD
OTTAWA, ON
K1G 3N4

Project:
TOMLINSON
NEW BUILDING
CITIGATE, OTTAWA

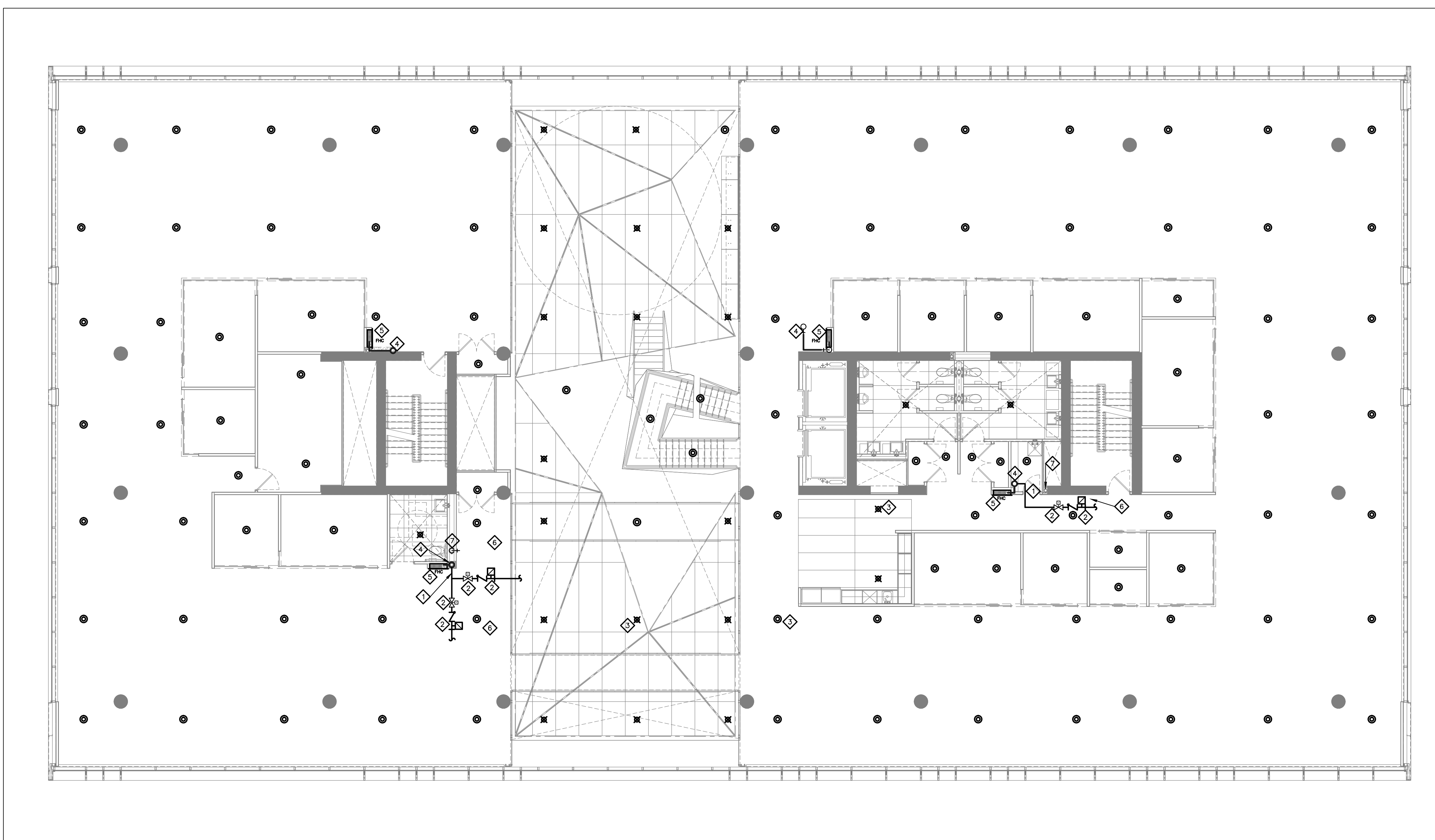
Drawing Title:
**FIRE PROTECTION
SECOND FLOOR PLAN**

Scale:	AS SHOWN	Drawn by:	M.M.K.
Designed by:	M.M.K.	Reviewed by:	J.R.P.
Approved by:	J.R.P.	Date:	MAY 2016

Project no.:	100-16L	Drawing no.:	M-132
Revision:	1		

An exact copy of all working documents including, without limitation, the original of the present document or plan is kept on file by J.R.P. Engineering. Any modification carried out to this document or plan or to accompanying documents without written authorization by the engineer is prohibited.

Authorized modifications must be signed and sealed by an engineer and this engineer will be completely responsible for these modifications. J.R.P. Engineering is not and will not be responsible for the consequences of these modifications or for modifications carried out without its consent.



1 THIRD FLOOR PLAN – FIRE PROTECTION
M133 SCALE 1:100

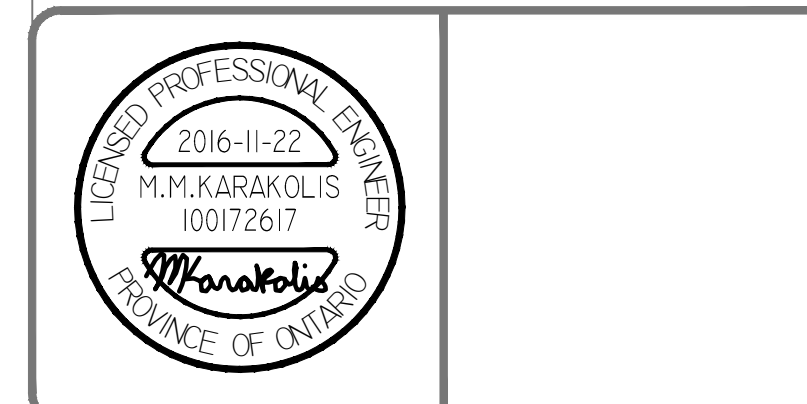
DRAWING NOTES:

- ◇ TYPICAL: SPRINKLER ZONES CONNECTION, REFER TO FIRE PROTECTION RISER DIAGRAM.
- ◇ TYPICAL: PROVIDE NEW SUPERVISED ISOLATION VALVE, CHECK VALVE AND FLOW SWITCH, PROVIDE ALL WIRING TO FIRE ALARM PANEL AND VERIFICATION BY BASE BUILDING FIRE ALARM CONTRACTOR.
- ◇ TYPICAL: PROVIDE NEW SPRINKLER HEAD C/W ALL PIPING AND FITTINGS AS INDICATED TO SUIT NFPA-13 REQUIREMENTS.
- ◇ TYPICAL: STANDPIPE, REFER TO FIRE PROTECTION RISER DIAGRAM.
- ◇ TYPICAL: PROVIDE CLASS III FIRE HOSE CABINET.
- ◇ TYPICAL: SPRINKLER SYSTEM TEST CONNECTION WITH VALVES AND DRAIN AS PER TYPICAL DETAIL.
- ◇ SPRINKLER TEST DRAIN RISER.

NOTE:
SPRINKLER CONTRACTOR TO PROVIDE ENGINEER STAMPED SPRINKLER DRAWINGS AND HYDRAULIC CALCULATIONS.
SPRINKLER SYSTEM TO BE DESIGNED TO NFPA 13 STANDARD, LATEST EDITION.

No	DESCRIPTION	DATE
1	ISSUED FOR CONSTRUCTION	NOV. 22 2016
0	ISSUED FOR PERMIT	AUG. 05 2016

REVISIONS



Client:
TOMLINSON
5597 POWER RD
OTTAWA, ON
K1G 3N4

Project:
TOMLINSON
NEW BUILDING
CITIGATE, OTTAWA

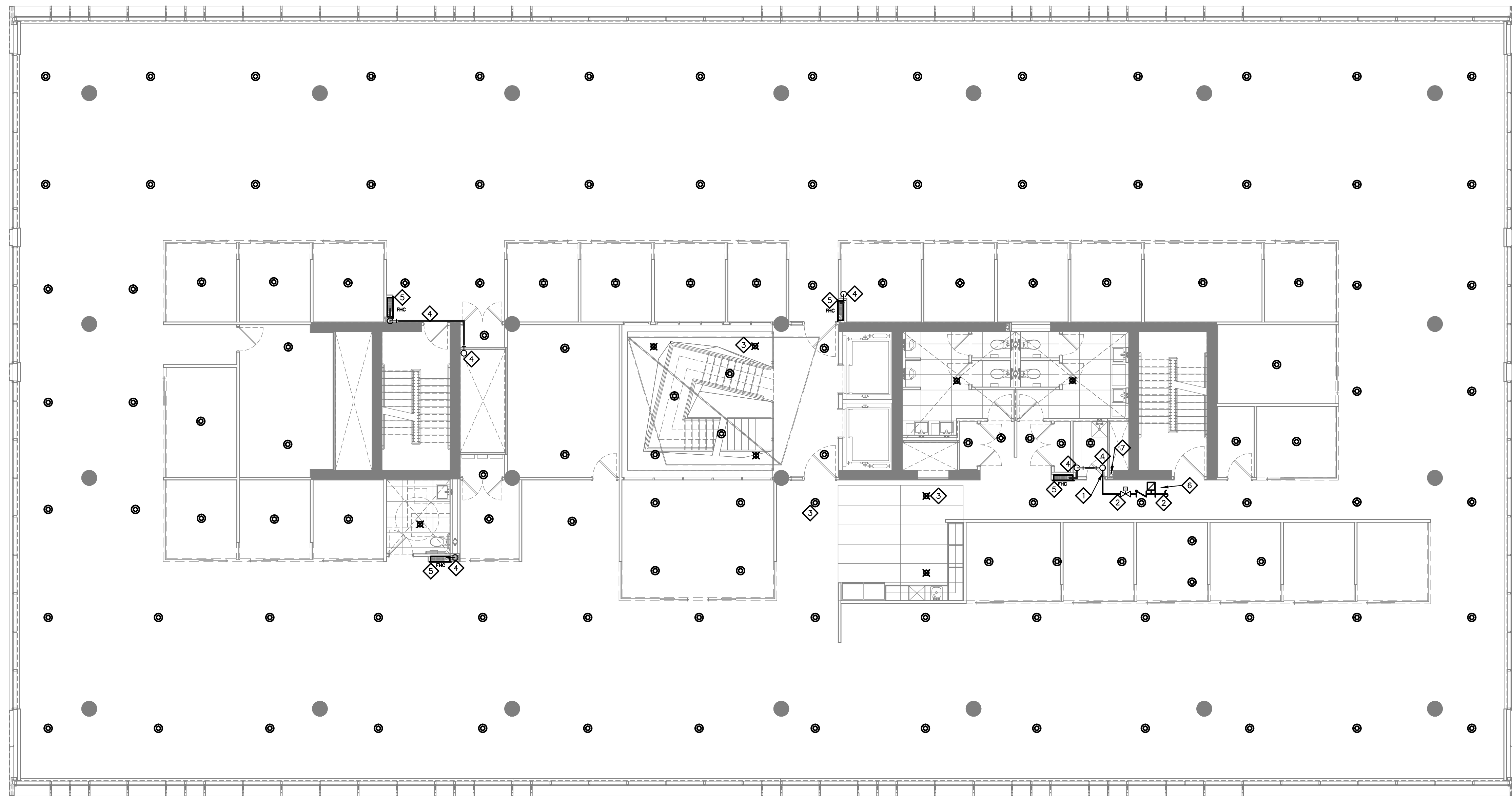
Drawing title:
**FIRE PROTECTION
THIRD FLOOR PLAN**

scale:	AS SHOWN	drawn by:	M.M.K.
designed by:	M.M.K.	revised by:	J.R.P.
approved by:	J.R.P.	date:	MAY 2016

project no.:	100-16L	drawing no.:	M-133
revision:	1		

An exact copy of all working documents including, without limitation, the original of the present document or plan is kept on file by J.R.P. Engineering. Any modification carried out to this document or plan or to accompanying documents without written authorization by the engineer is prohibited.

Authorized modifications must be signed and sealed by an engineer and this engineer will be completely responsible for these modifications. J.R.P. Engineering is not and will not be responsible for the consequences of these modifications or for modifications carried out without its consent.



1 FOURTH FLOOR PLAN – FIRE PROTECTION
M134 SCALE 1:100

DRAWING NOTES:

- ◇ TYPICAL: SPRINKLER ZONE CONNECTION, REFER TO FIRE PROTECTION RISER DIAGRAM.
 - ◇ TYPICAL: PROVIDE NEW SUPERVISED ISOLATION VALVE, CHECK VALVE AND FLOW SWITCH. PROVIDE ALL WIRING TO FIRE ALARM PANEL AND VERIFICATION BY BASE BUILDING FIRE ALARM CONTRACTOR.
 - ◇ TYPICAL: PROVIDE NEW SPRINKLER HEAD C/W ALL PIPING AND FITTINGS AS INDICATED TO SUIT NFPA-13 REQUIREMENTS.
 - ◇ TYPICAL: STANDPIPE, REFER TO FIRE PROTECTION RISER DIAGRAM.
 - ◇ TYPICAL: PROVIDE CLASS III FIRE HOSE CABINET.
- TYPICAL: SPRINKLER SYSTEM TEST CONNECTION WITH VALVES AND DRAIN AS PER TYPICAL DETAIL.
SPRINKLER TEST DRAIN RISER.

NOTE:
SPRINKLER CONTRACTOR TO PROVIDE ENGINEER STAMPED SPRINKLER DRAWINGS AND HYDRAULIC CALCULATIONS.
SPRINKLER SYSTEM TO BE DESIGNED TO NFPA 13 STANDARD, LATEST EDITION.

No	DESCRIPTION	DATE
1	ISSUED FOR CONSTRUCTION	NOV. 22 2016
0	ISSUED FOR PERMIT	AUG. 05 2016

REVISIONS



Client:
TOMLINSON
5597 POWER RD
OTTAWA, ON
K1G 3N4

Project:
TOMLINSON
NEW BUILDING
CITIGATE, OTTAWA

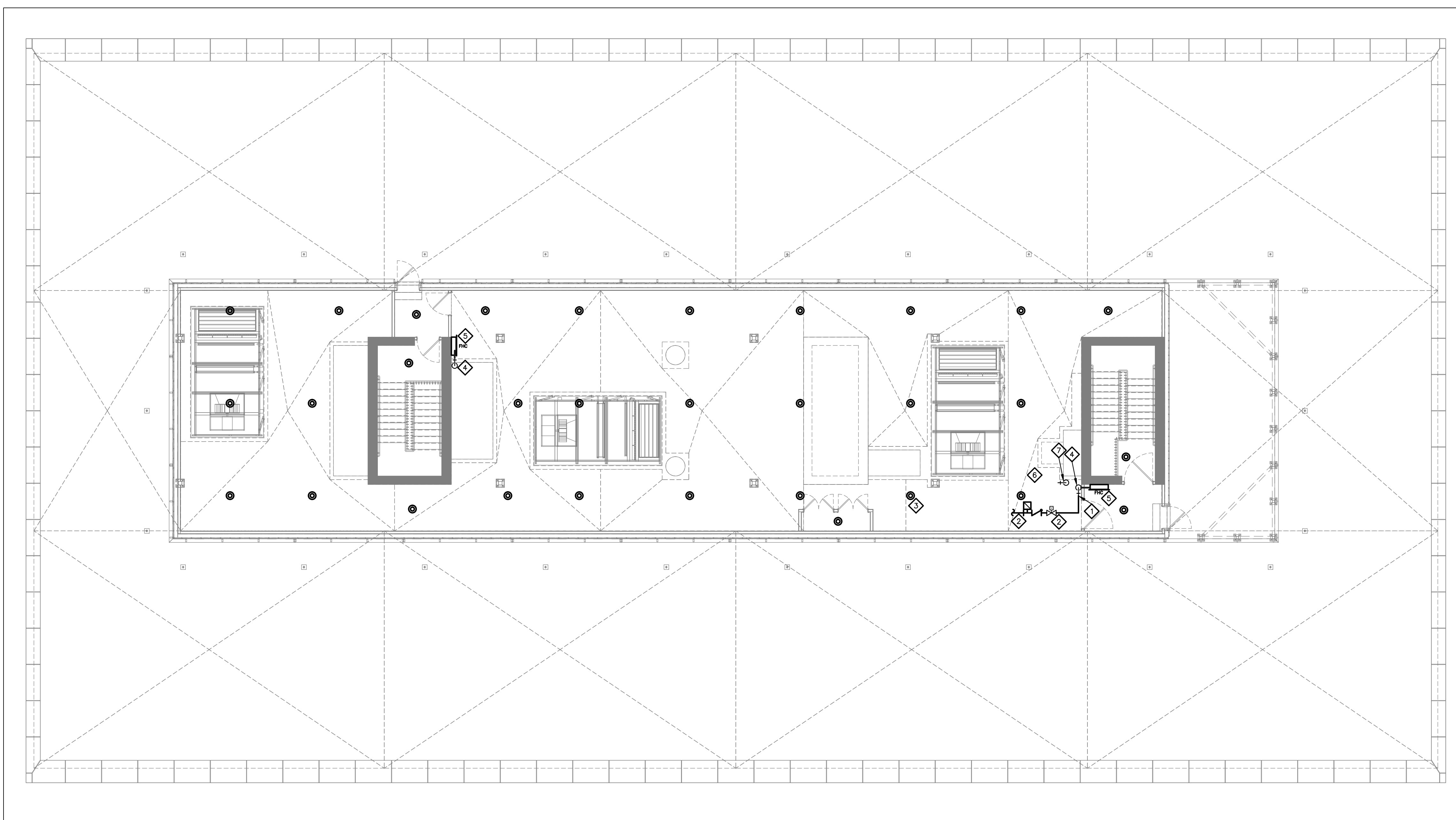
Drawing Title:
**FIRE PROTECTION
FOURTH FLOOR PLAN**

Scale:	AS SHOWN	Drawn by:	M.M.K.
Designed by:	M.M.K.	Reviewed by:	J.R.P.
Approved by:	J.R.P.	Date:	MAY 2016

Project no.:	100-16L	Drawing no.:	M-134
Revision:	1		

An exact copy of all working documents including, without limitation, the original of the present document or plan is kept on file by J.R.P. Engineering. Any modification carried out to this document or plan or to accompanying documents without written authorization by the engineer is prohibited.

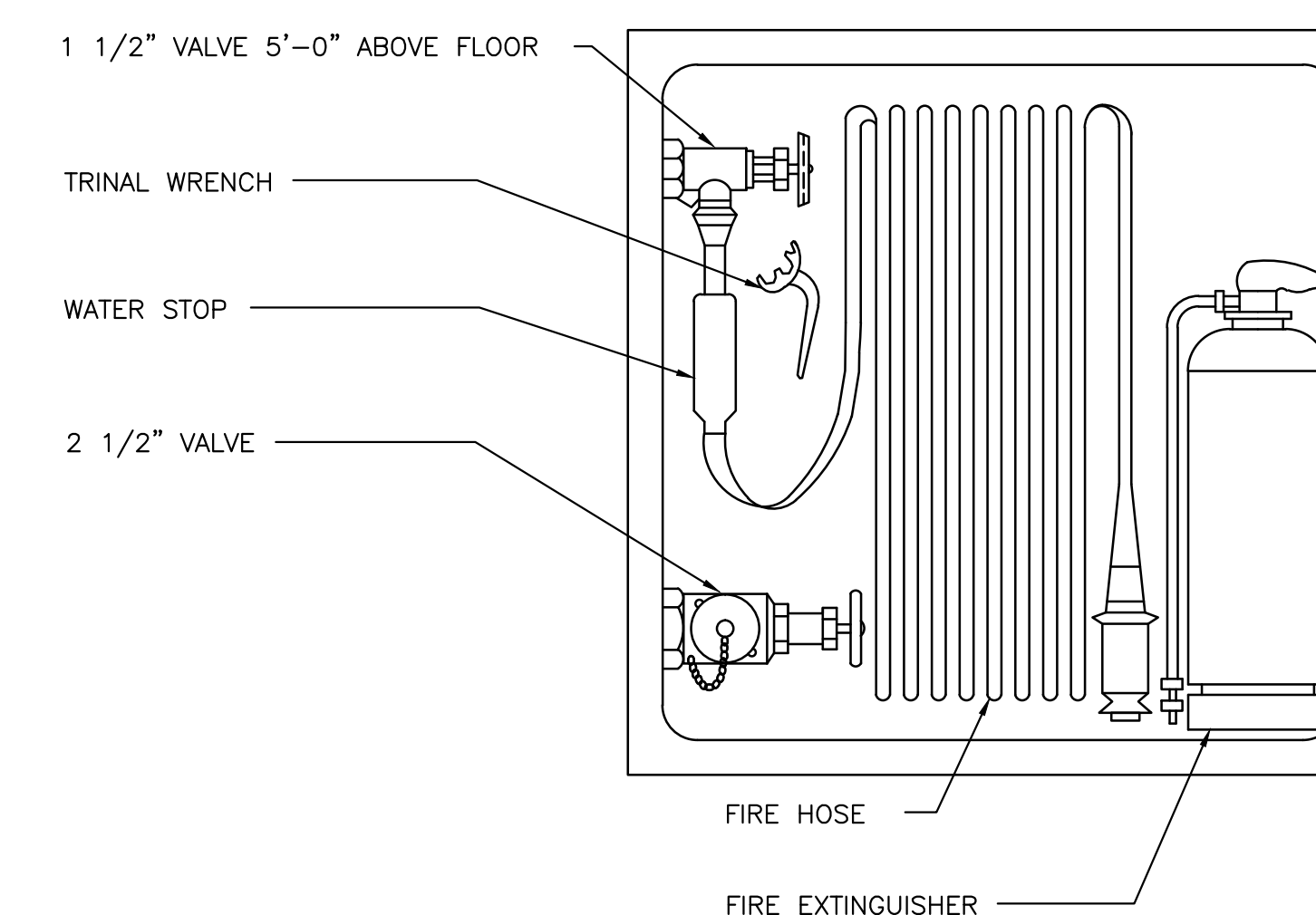
Authorized modifications must be signed and sealed by an engineer and this engineer will be completely responsible for these modifications. J.R.P. Engineering is not and will not be responsible for the consequences of these modifications or for modifications carried out without its consent.



DRAWING NOTES:

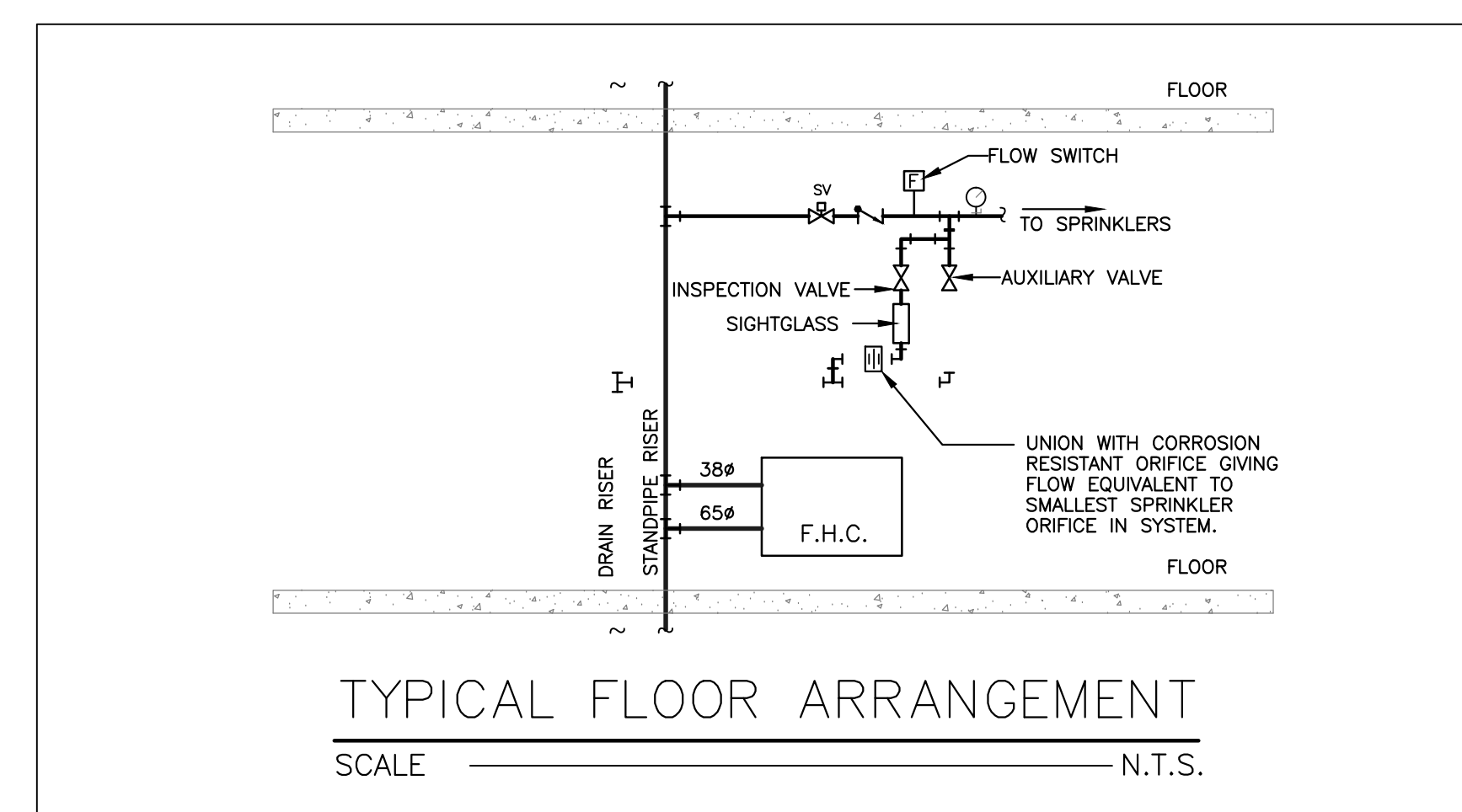
- 1 TYPICAL: SPRINKLER ZONE CONNECTION, REFER TO FIRE PROTECTION RISER DIAGRAM.
- 2 TYPICAL: PROVIDE NEW SUPERVISED ISOLATION VALVE, CHECK VALVE AND FLOW SWITCH. PROVIDE ALL WIRING TO FIRE ALARM PANEL AND VERIFICATION BY BASE BUILDING FIRE ALARM CONTRACTOR.
- 3 TYPICAL: PROVIDE NEW SPRINKLER HEAD C/W ALL PIPING AND FITTINGS AS INDICATED TO SUIT NFPA-13 REQUIREMENTS.
- 4 TYPICAL: STANDPIPE, REFER TO FIRE PROTECTION RISER DIAGRAM.
- 5 TYPICAL: PROVIDE CLASS III FIRE HOSE CABINET.
- 6 TYPICAL: SPRINKLER SYSTEM TEST CONNECTION WITH VALVES AND DRAIN AS PER TYPICAL DETAIL.
- 7 SPRINKLER TEST DRAIN RISER.

NOTE: HYDRAULIC CALCULATIONS, SPRINKLER CONTRACTOR TO PROVIDE ENGINEER STAMPED SPRINKLER DRAWINGS. SPRINKLER SYSTEM TO BE DESIGNED TO NFPA 13 STANDARD, LATEST EDITION.



FIRE HOSE CABINET CLASS III WITH FIRE EXTINGUISHER

SCALE _____ N.T.S.



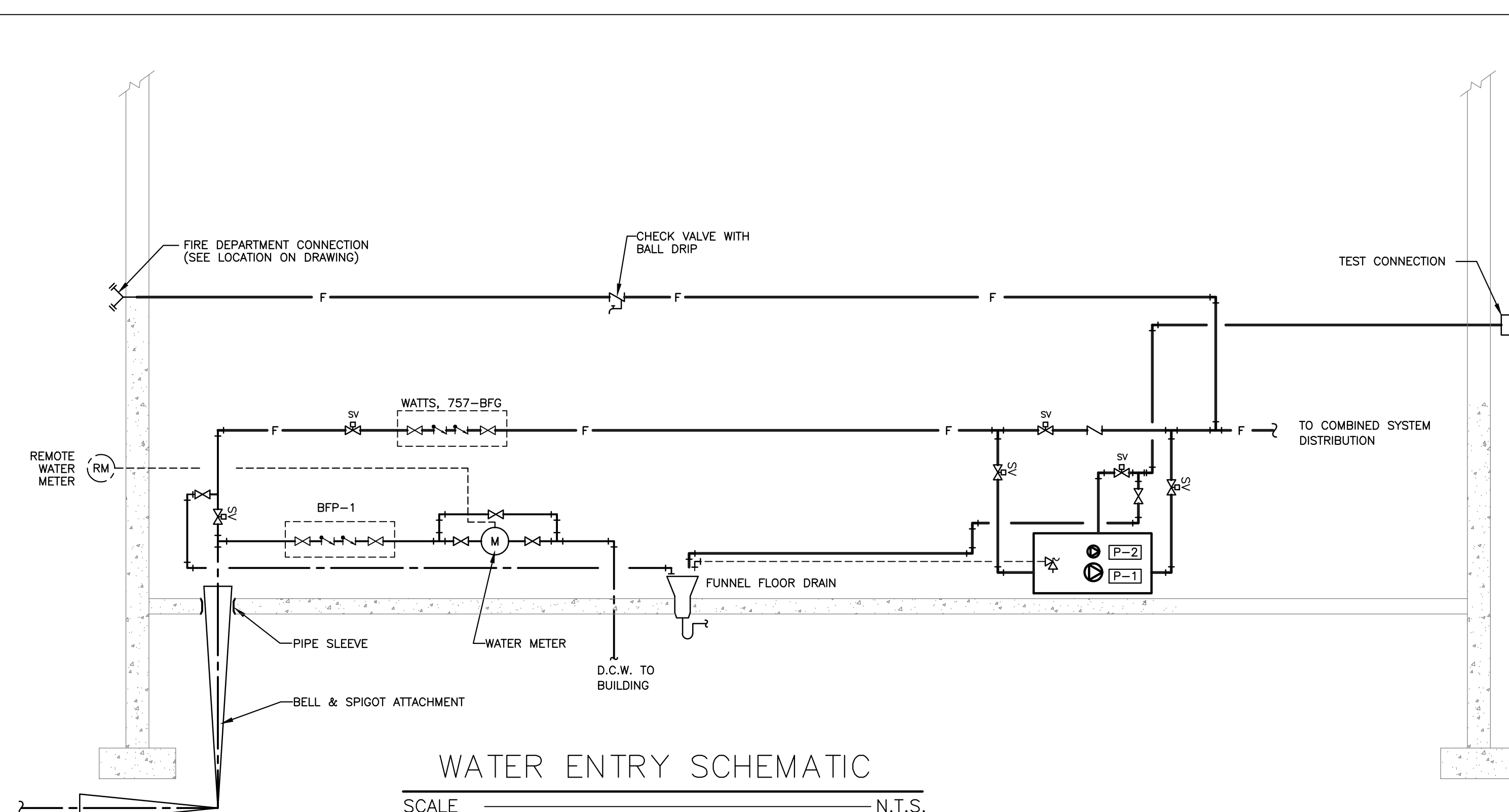
TYPICAL FLOOR ARRANGEMENT

SCALE _____ N.T.S.

1 PENTHOUSE – FIRE PROTECTION
M135 SCALE 1:100

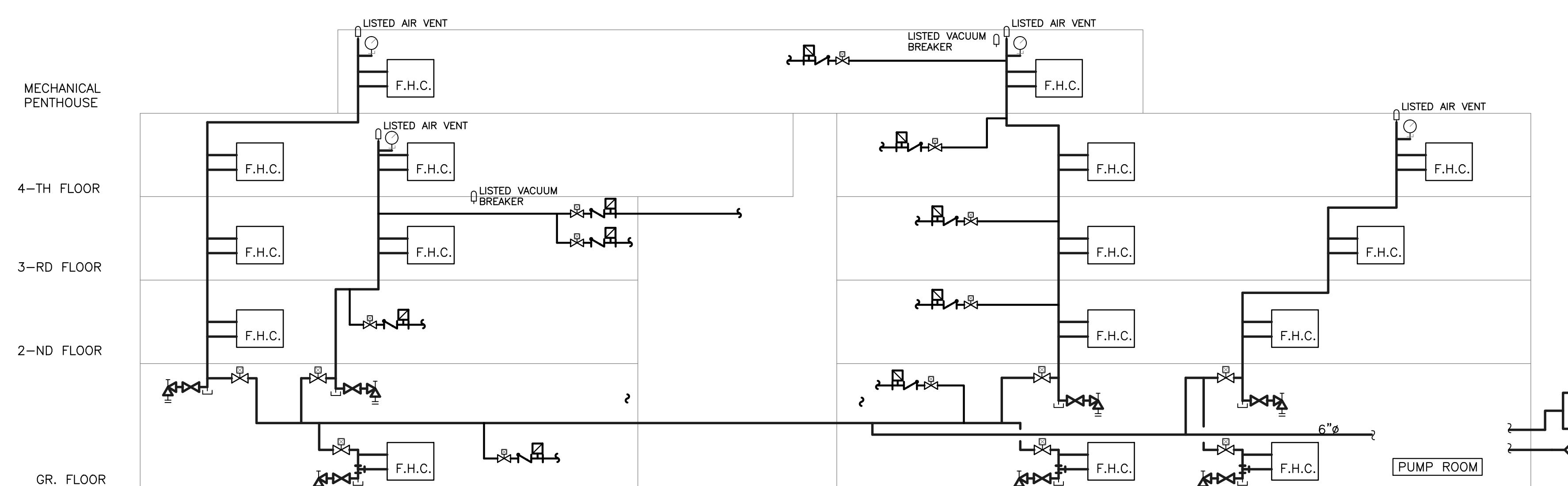
PUMP SCHEDULE								
No.	SERVICE	MAKE/ MODEL	CAPACITY (GPM)	RATED HEAD (PSIG)	RPM	VOLTAGE	HP	REMARKS
P-1	FIRE PUMP	A-C FIREPUMP 2.5X2.5X9.5F	100.0	35.0	3550	575/3/60	25.0	SEE NOTES BELOW
P-2	JOCKEY PUMP	ITT JOCKEY PUMP 7GB05 9-STAGE	4.0	40.0	3500	575/3/60	0.5	SEE NOTES BELOW

- NOTES:**
- PUMPS P-1 AND P-2 SHALL BE INCLUDED AS COMPONENTS IN COMPLETE PACKAGED FIRE SYSTEM AS SUPPLIED BY XYLEM.
 - SYSTEM TO BE FACTORY ASSEMBLED, MOUNTED ON STRUCTURAL BASE, PRE-PIPED AND PRE-WIRED BY MANUFACTURER.
 - SYSTEM SHALL INCLUDE FIRE PUMP, JOCKEY PUMP, GATE SUCTION VALVE, BUTTERFLY DISCHARGE VALVE, CHECK VALVE, TAMPER SWITCHES, TESTING TEE, SUCTION AND DISCHARGE GAUGES, RELIEF VALVE, TORNATECH GPR+GPU FULL SERVICE REDUCED VOLTAGE AUTOTRANSFORMER FIRE PUMP CONTROLLER, AUTOMATIC TRANSFER SWITCH AND JOCKEY PUMP CONTROLLER.
 - SYSTEM SHALL BE ULC LISTED AND SHALL MEET ALL REQUIREMENTS BY NFPA-20.



WATER ENTRY SCHEMATIC

SCALE _____ N.T.S.



SPRINKLER AND STANDPIPE SYSTEM SCHEMATIC

SCALE _____ N.T.S.

No	DESCRIPTION	DATE
1	ISSUED FOR CONSTRUCTION	NOV. 22 2016
0	ISSUED FOR PERMIT	AUG. 05 2016

REVISIONS



Client:
TOMLINSON
5597 POWER RD
OTTAWA, ON
K1G 3N4

Project:
TOMLINSON
NEW BUILDING
CITIGATE, OTTAWA

Drawing title:
**FIRE PROTECTION
PENTHOUSE FLOOR PLAN
AND
FIRE PROTECTION RISER**

Scale:	AS SHOWN	Drawn by:	M.M.K.
Designed by:	M.M.K.	Reviewed by:	J.R.P.
Approved by:	J.R.P.	Date:	MAY 2016

Project no.:	100-16L	Drawing no.:	M-135
Revision:	1		