



## R.W. TOMLINSON - NEW HEAD OFFICE

TAL-CO Building Innovations  
1341-2 Coker Street  
Greely, Ontario K4P 1A1  
Tel: 613-821-3959  
Fax: 613-821-2938

Issue date: 5-Dec-16  
Revision date: N/A  
Revision #: N/A

---

### CLARIFICATION #1 – Lot 2A

The following modifications and clarifications are to be accounted for on this project. As well, when entering into the Form of Agreement to do the work, they shall become a part thereof.

#### **Instruction/Clarifications:**

Please be advised that Clarification #1 for Lot 2A has been issued for the above-mentioned project, as per the details below.

1. The following ASK's were received after the Issued for Construction Drawings dated 11-Nov-16, were finalized.

ASK's #37, #38, #39, #43, #44, #45, #49, #50, #51, and #52 are to be taken into account for this tender.

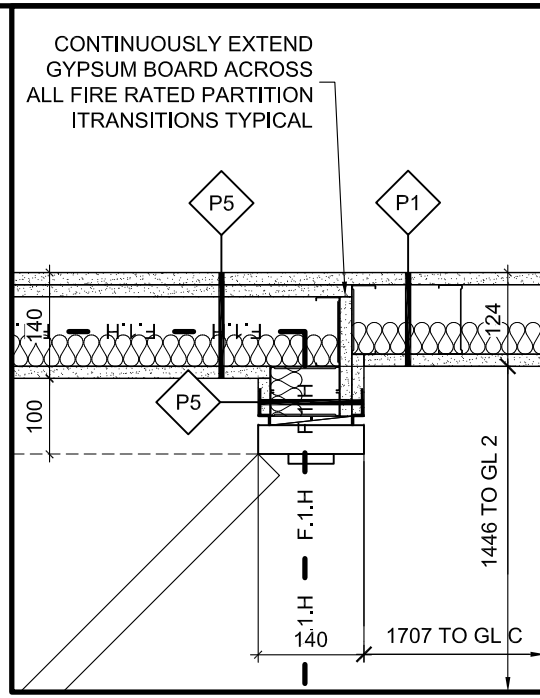
Drawings and Documents are available to view/download at [www.tal-co.com](http://www.tal-co.com)

Under the Active Projects heading, select Project Management, and RW Tomlinson – New Head Office.

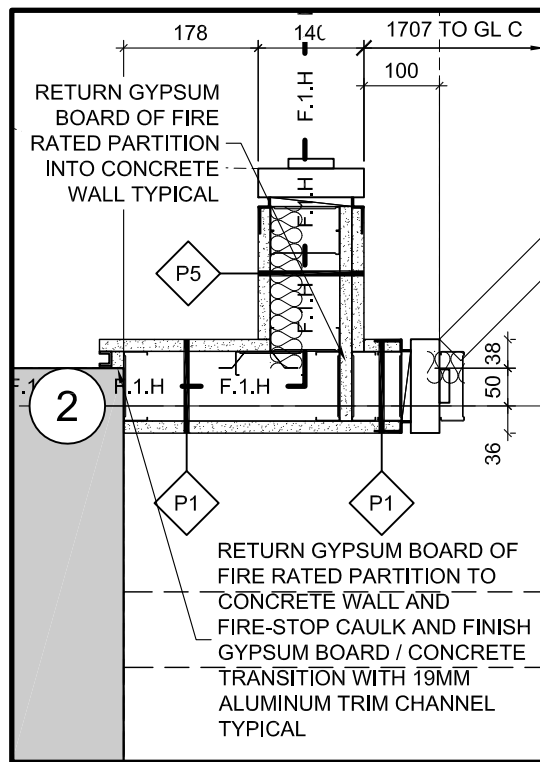
**Reminder: It is your responsibility to consult ALL documents, drawings, sketches, Clarifications, Addenda, and Supplemental Instructions.**

For questions or further information, please contact the office by e-mail at [info@tal-co.com](mailto:info@tal-co.com).

**End of Clarification No. 1 – Lot 2A**



**1 GR. FL. PL. DET.**  
A501 SCALE = 1:10



**17 GR. FL. PL. DET.**  
A501 SCALE = 1:10



THE ANNEX / 450 CECIL ST. OTTAWA ON K1R 6S3  
613.567.7888 PHONE / 613.567.7528 FAX  
csarchitect.com



PROJECT:  
TOMLINSON NEW BUILDING

DRAWING TITLE:  
REFERENCE AS INDICATED

DATE: 2016/11/17

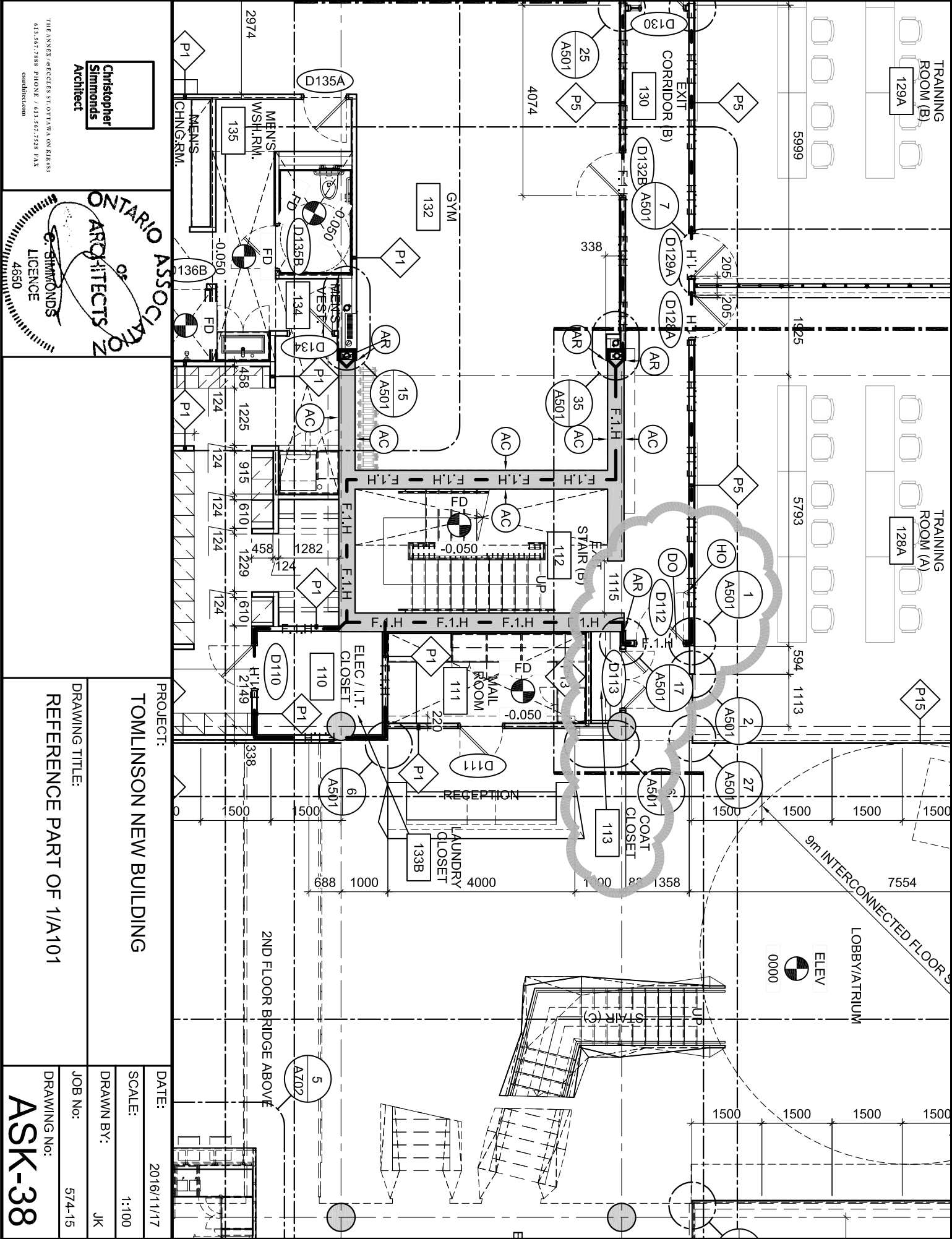
SCALE: AS INDICATED

DRAWN BY: JK

JOB No: 574-15

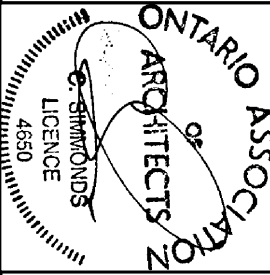
DRAWING No:

**ASK-37**



**Christopher Simmonds**  
Architect

THE ANNEX/480 EGLINTON ST. OTTAWA, ON K1R6S5  
613.567.7888 PHONE / 613.567.7528 FAX  
csm@architect.com



PROJECT:  
**TOMLINSON NEW BUILDING**

DRAWING TITLE:  
**REFERENCE PART OF 1/A101**

DATE:  
2016/1/17

SCALE:  
1:100

DRAWN BY:  
JK

JOB No:  
574-15

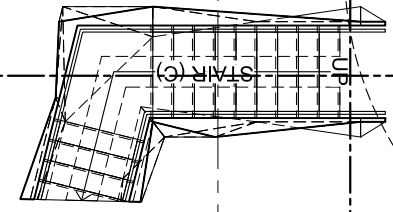
DRAWING No:  
**ASK-38**

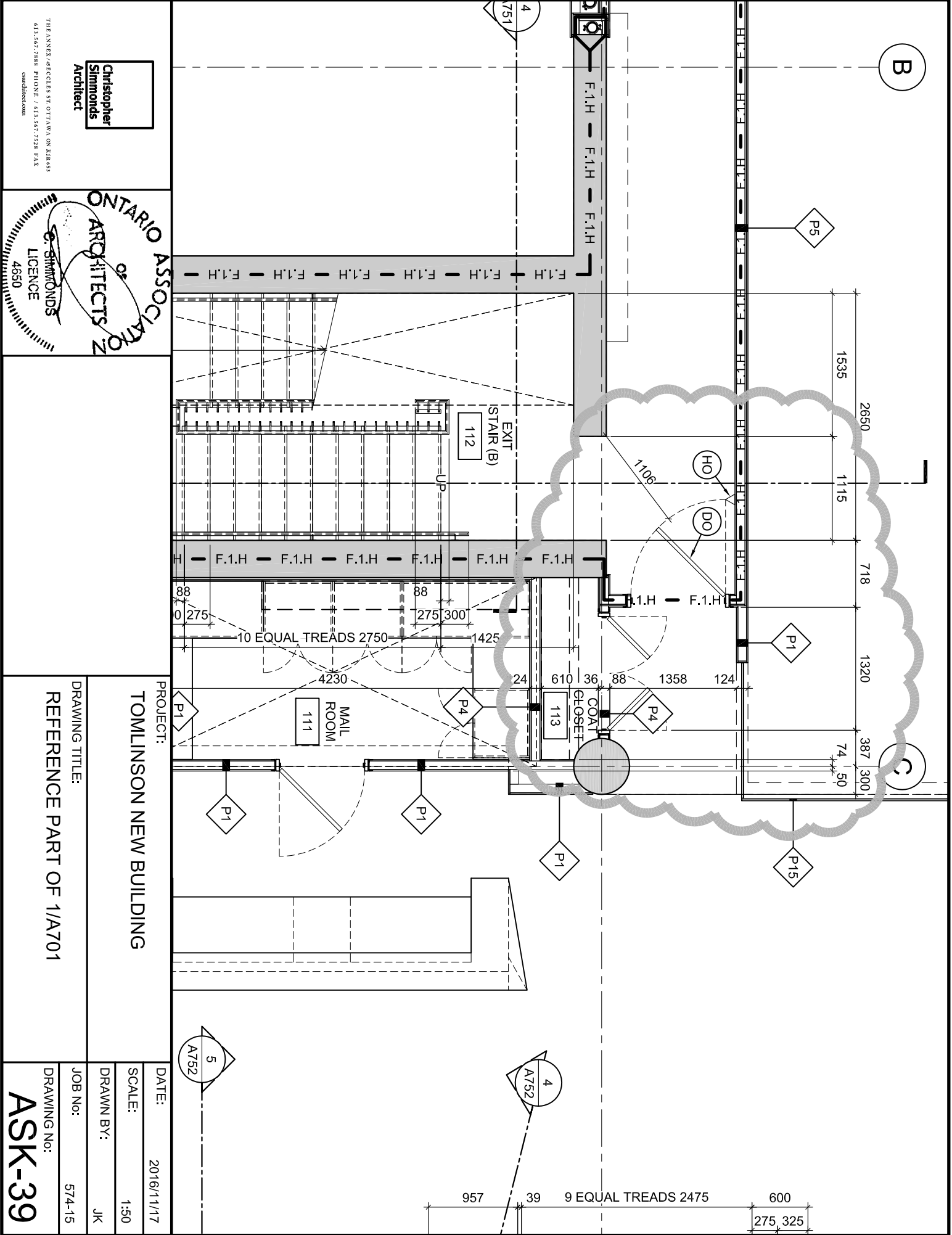


LOBBY/ATRIUM

9m INTERCONNECTED FLOOR 5

2ND FLOOR BRIDGE ABOVE

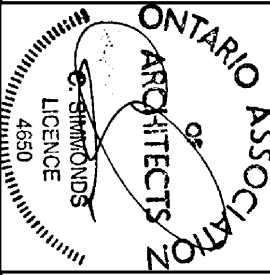




B

C

**Christopher Simmonds**  
Architect  
THE ANNEX/480 EGLINTON ST. OTTAWA, ON K1R6G5  
613.567.7888 PHONE / 613.567.7528 FAX  
csw@architect.com



PROJECT:  
**TOMLINSON NEW BUILDING**

DRAWING TITLE:  
**REFERENCE PART OF 1/A701**

DATE:  
2016/11/17

SCALE:  
1:50

DRAWN BY:  
JK

JOB No:  
574-15

DRAWING No:  
**ASK-39**

5  
A752

4  
A752

957 39 9 EQUAL TREADS 2475 600  
275 325

10 EQUAL TREADS 2750  
88 275 300 1425

EXIT  
STAIR (B)  
112

COAT  
CLOSET  
113

MAIL  
ROOM  
111

HO DO

P1

P4

P4

P1

P1

P1

P1

P15

P5

4  
A751

F.1.H F.1.H F.1.H

F.1.H F.1.H F.1.H F.1.H F.1.H F.1.H

F.1.H F.1.H F.1.H F.1.H F.1.H

F.1.H F.1.H

1535 2650 1115 718 1320 387 300 74 50

88 0 275

4230

610 36 88 1358 124

113

P1

P4

P4

P1

P1

P1

P1

P15

P5

4  
A751

F.1.H F.1.H F.1.H

F.1.H F.1.H F.1.H F.1.H F.1.H F.1.H

F.1.H F.1.H F.1.H F.1.H F.1.H

F.1.H F.1.H

1535 2650 1115 718 1320 387 300 74 50

88 0 275

4230

610 36 88 1358 124

113

P1

P4

P4

P1

P1

P1

P1

P15

P5

4  
A751

F.1.H F.1.H F.1.H

F.1.H F.1.H F.1.H F.1.H F.1.H F.1.H

F.1.H F.1.H F.1.H F.1.H F.1.H

F.1.H F.1.H

1535 2650 1115 718 1320 387 300 74 50

88 0 275

4230

610 36 88 1358 124

113

P1

P4

P4

P1

P1

P1

P1

P15

P5

4  
A751

F.1.H F.1.H F.1.H

F.1.H F.1.H F.1.H F.1.H F.1.H F.1.H

F.1.H F.1.H F.1.H F.1.H F.1.H

F.1.H F.1.H

1535 2650 1115 718 1320 387 300 74 50

88 0 275

4230

610 36 88 1358 124

113

P1

P4

P4

P1

P1

P1

P1

P15

P5

4  
A751

F.1.H F.1.H F.1.H

F.1.H F.1.H F.1.H F.1.H F.1.H F.1.H

F.1.H F.1.H F.1.H F.1.H F.1.H

F.1.H F.1.H

1535 2650 1115 718 1320 387 300 74 50

88 0 275

4230

610 36 88 1358 124

113

P1

P4

P4

P1

P1

P1

P1

P15

P5

4  
A751

F.1.H F.1.H F.1.H

F.1.H F.1.H F.1.H F.1.H F.1.H F.1.H

F.1.H F.1.H F.1.H F.1.H F.1.H

F.1.H F.1.H

1535 2650 1115 718 1320 387 300 74 50

88 0 275

4230

610 36 88 1358 124

113

P1

P4

P4

P1

P1

P1

P1

P15

P5

4  
A751

F.1.H F.1.H F.1.H

F.1.H F.1.H F.1.H F.1.H F.1.H F.1.H

F.1.H F.1.H F.1.H F.1.H F.1.H

F.1.H F.1.H

1535 2650 1115 718 1320 387 300 74 50

88 0 275

4230

610 36 88 1358 124

113

P1

P4

P4

P1

P1

P1

P1

P15

P5

4  
A751

F.1.H F.1.H F.1.H

F.1.H F.1.H F.1.H F.1.H F.1.H F.1.H

F.1.H F.1.H F.1.H F.1.H F.1.H

F.1.H F.1.H

1535 2650 1115 718 1320 387 300 74 50

88 0 275

4230

610 36 88 1358 124

113

P1

P4

P4

P1

P1

P1

P1

P15

P5

4  
A751

F.1.H F.1.H F.1.H

F.1.H F.1.H F.1.H F.1.H F.1.H F.1.H

F.1.H F.1.H F.1.H F.1.H F.1.H

F.1.H F.1.H

1535 2650 1115 718 1320 387 300 74 50

88 0 275

4230

610 36 88 1358 124

113

P1

P4

P4

P1

P1

P1

P1

P15

P5

4  
A751

F.1.H F.1.H F.1.H

F.1.H F.1.H F.1.H F.1.H F.1.H F.1.H

F.1.H F.1.H F.1.H F.1.H F.1.H

F.1.H F.1.H

1535 2650 1115 718 1320 387 300 74 50

88 0 275

4230

610 36 88 1358 124

113

P1

P4

P4

P1

P1

P1

P1

P15

P5

4  
A751

F.1.H F.1.H F.1.H

F.1.H F.1.H F.1.H F.1.H F.1.H F.1.H

F.1.H F.1.H F.1.H F.1.H F.1.H

F.1.H F.1.H

1535 2650 1115 718 1320 387 300 74 50

88 0 275

4230

610 36 88 1358 124

113

P1

P4

P4

P1

P1

P1

P1

P15

P5

4  
A751

F.1.H F.1.H F.1.H

F.1.H F.1.H F.1.H F.1.H F.1.H F.1.H

F.1.H F.1.H F.1.H F.1.H F.1.H

F.1.H F.1.H

1535 2650 1115 718 1320 387 300 74 50

88 0 275

4230

610 36 88 1358 124

113

P1

P4

P4

P1

P1

P1

P1

P15

P5

4  
A751

F.1.H F.1.H F.1.H

F.1.H F.1.H F.1.H F.1.H F.1.H F.1.H

F.1.H F.1.H F.1.H F.1.H F.1.H

F.1.H F.1.H

1535 2650 1115 718 1320 387 300 74 50

88 0 275

4230

610 36 88 1358 124

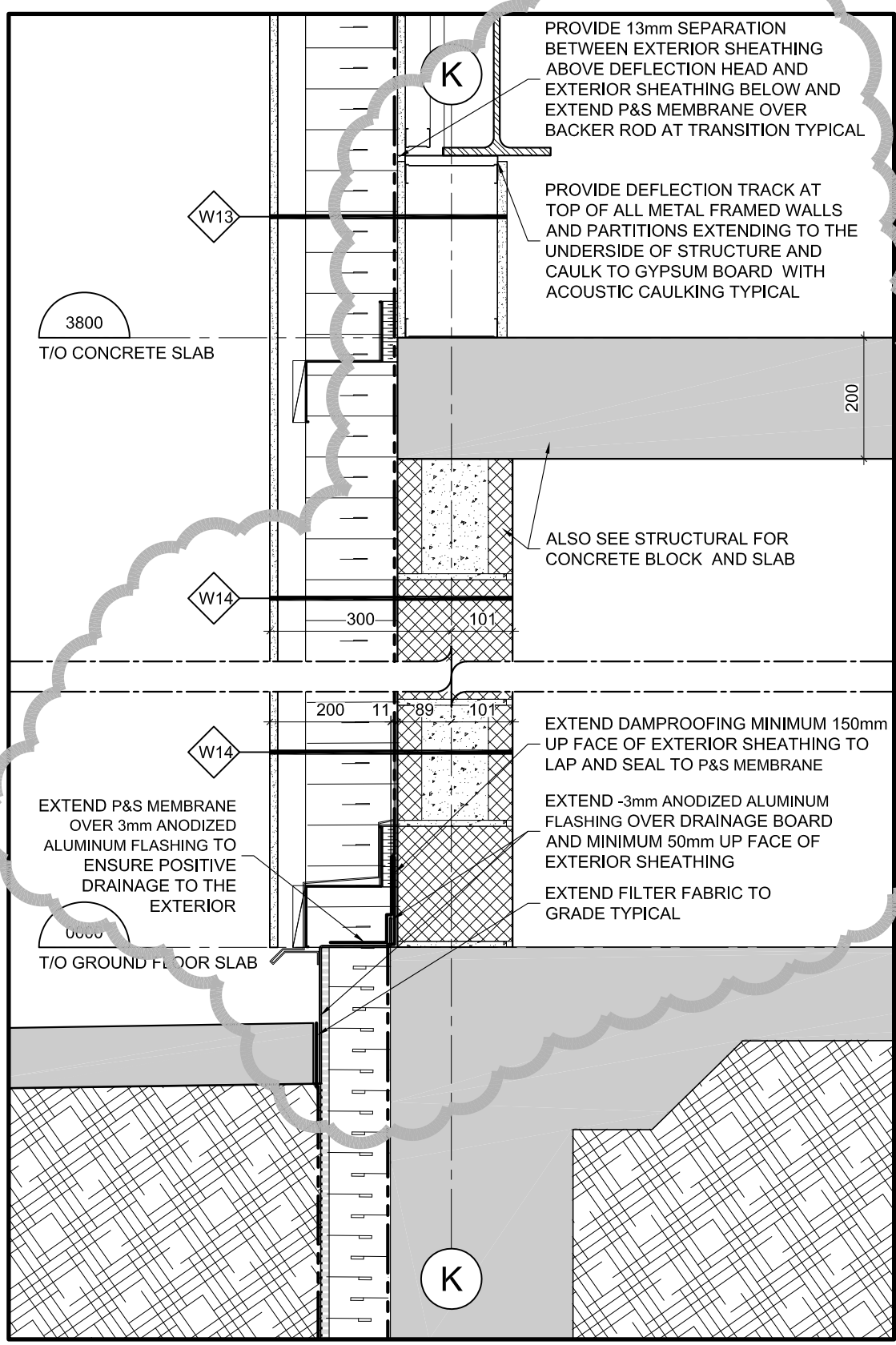
113

P1

P4

P4

P1



THE ANNEX / 450 CECIL ST. OTTAWA ON K1R 6S3  
 613.567.7888 PHONE / 613.567.7528 FAX  
 csarchitect.com



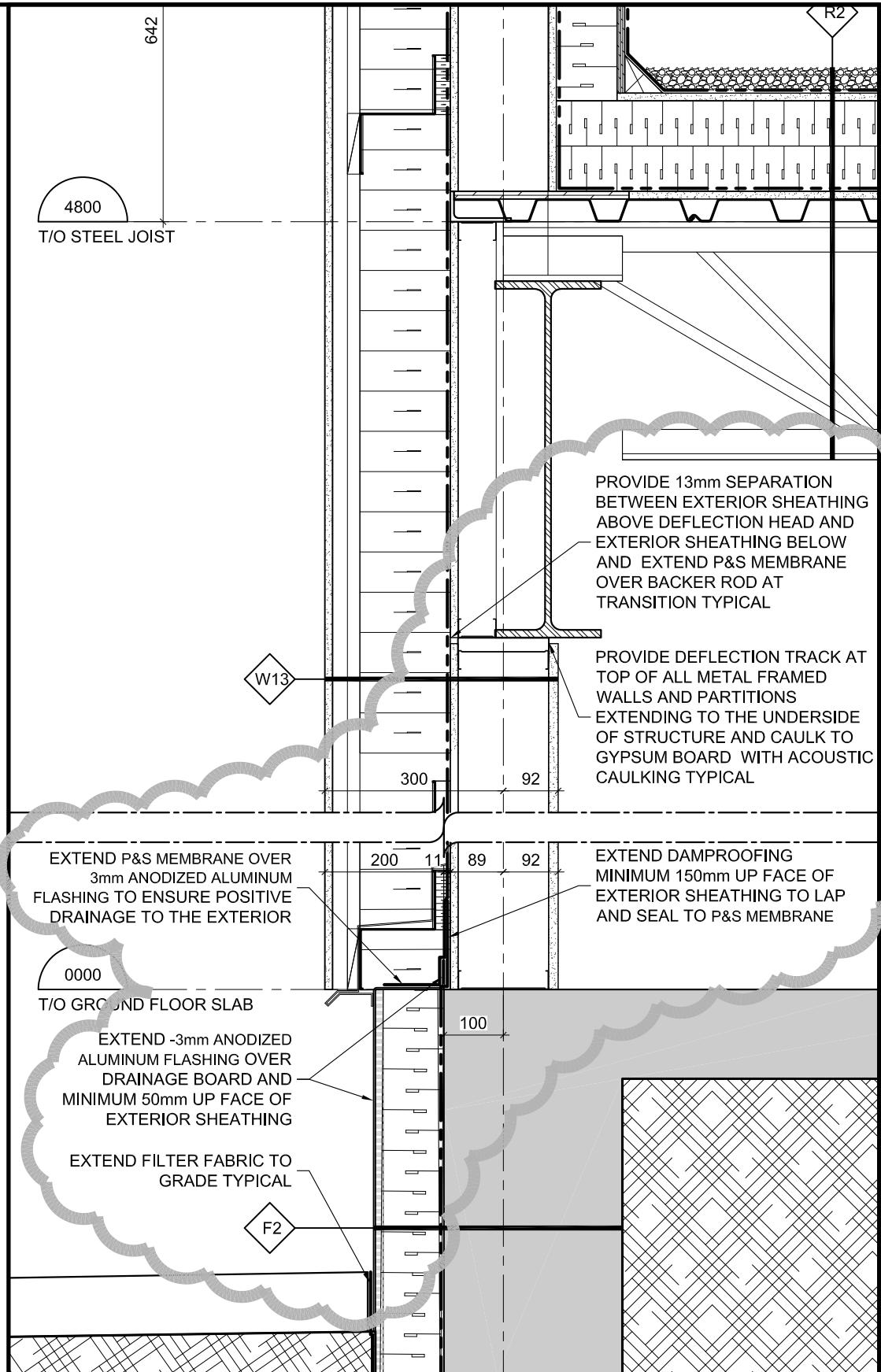
PROJECT:  
**TOMLINSON NEW BUILDING**

DATE: 2016/11/21  
 SCALE: AS INDICATED  
 DRAWN BY: JK

DRAWING TITLE:  
**REFERENCE PART DETAIL 7/A603**

JOB No: 574-15  
 DRAWING No:

**ASK-43**



4800  
T/O STEEL JOIST

642

R2

W13

300

92

PROVIDE 13mm SEPARATION BETWEEN EXTERIOR SHEATHING ABOVE DEFLECTION HEAD AND EXTERIOR SHEATHING BELOW AND EXTEND P&S MEMBRANE OVER BACKER ROD AT TRANSITION TYPICAL

PROVIDE DEFLECTION TRACK AT TOP OF ALL METAL FRAMED WALLS AND PARTITIONS EXTENDING TO THE UNDERSIDE OF STRUCTURE AND CAULK TO GYPSUM BOARD WITH ACOUSTIC CAULKING TYPICAL

EXTEND P&S MEMBRANE OVER 3mm ANODIZED ALUMINUM FLASHING TO ENSURE POSITIVE DRAINAGE TO THE EXTERIOR

0000

T/O GROUND FLOOR SLAB

200

11

89

92

EXTEND DAMPROOFING MINIMUM 150mm UP FACE OF EXTERIOR SHEATHING TO LAP AND SEAL TO P&S MEMBRANE

EXTEND -3mm ANODIZED ALUMINUM FLASHING OVER DRAINAGE BOARD AND MINIMUM 50mm UP FACE OF EXTERIOR SHEATHING

EXTEND FILTER FABRIC TO GRADE TYPICAL

F2

100



PROJECT:  
TOMLINSON NEW BUILDING

DATE: 2016/11/21

SCALE: AS INDICATED

DRAWN BY: JK

DRAWING TITLE:  
REFERENCE PART DETAIL 10/A603

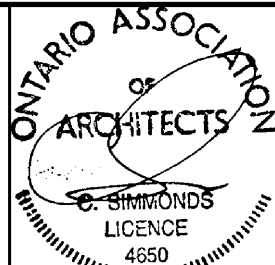
JOB No: 574-15

DRAWING No:  
**ASK-44**

- (C) TAPE JOINTS OF ALL GYPSUM BOARD LAYERS WITH DRYWALL COMPOUND.
- (D) INNER LAYERS MUST BE TAPED BUT NOT SANDED.
- (E) INSTALL GYPSUM BOARD WITH NO JOINTS GREATER THAN 6 mm.
- (F) FIRE-STOP CAULK OUTSIDE LAYER OF GYPSUM BOARD OF ALL RATED STEEL STUD PARTITIONS AT TOP AND BOTTOM AND ALL PENETRATIONS.
- (G) ACOUSTIC CAULK OUTSIDE LAYER OF GYPSUM BOARD OF ALL NON-RATED STEEL STUD PARTITIONS AT TOP AND BOTTOM AND ALL PENETRATIONS.
- (H) CAULKING OF ANY GAP OVER 6 mm MUST BE OVER ROD BACKUP.
- (I) DOOR AND FRAME TYPE ORIENTATION MAY BE REVERSED (SEE PLANS)
- (J) TRIM AND EXTEND THERMAL AND ACOUSTIC BATT INSULATION CONTINUOUSLY BEHIND AND AROUND ALL ELECTRICAL BOXES.
- (K) PROVIDE SLOTTED TOP TRACK DEFLECTION HEAD AT T/O ALL STEEL STUD WALL AND PARTITION ASSEMBLIES.
- (L) PROVIDE 20mm DEFLECTION ALLOWANCE AT TOP OF ALL CONCRETE BLOCK PARTITIONS
- (M) PACK VOID AT T/O OF ALL FIRE RATED CONCRETE BLOCK PARTITIONS WITH MINERAL WOOL AND SEAL IN PLACE WITH FIRE-STOP CAULK.
- (N) SEAL VOID AT T/O OF ALL NON-RATED CONCRETE BLOCK PARTITIONS WITH ACOUSTIC CAULK OVER BACKER ROD.
- (O) PROVIDE MAX. 0.50mm METAL STUDS FOR ALL INTERIOR PARTITIONS. NOTIFY ARCHITECT WHERE HEAVIER GAUGE IS REQUIRED TO MEET DEFLECTIONS REQUIREMENT.
- (P) STUD WALL REINFORCEMENT / BLOCKING:  
SECURE 19mm VENEER CORE PLYWOOD BLOCKING TO STUDS WITHIN THE WALL CAVITY AS REQUIRED TO ANCHOR GRAB BARS OR ANY OTHER WALL MOUNTED FIXTURE.
- (Q) GRIND HIGH-POINTS AND SKIM COAT ALL EXPOSED CONCRETE SURFACES WITH DRYWALL COMPOUND.
- MISCELLANEOUS METAL:  
(R) -CONTINUOUSLY WELD ALL STEEL COMPONENTS.  
-FILL AND GRIND ALL STEEL CONNECTIONS SMOOTH.  
-FINISH ALL EXPOSED STEEL SURFACES WITH PAINT.
- (S) U.N. USE MOISTURE RESISTANT GYPSUM BOARD ON ALL WASHROOM CEILINGS AND WALLS CONTAINING PLUMBING PENETRATIONS.
- (T) USE CEMENT BOARD IN LIEU OF GYPSUM BOARD ON ALL SHOWER WALLS.
- (U) FIRE-CAULK PERIMETER OF ALL ACOUSTIC GYPSUM BOARD PARTITIONS.  
WHERE OUTLET BOXES ARE INSTALLED BACK TO BACK PACK CAVITY AROUND BOTH OUTLET BOXES AND SECURE ONE LAYER OF DRYWALL IN THE AIR-SPACE TO THE BACK SIDE OF ONE ROW OF STUDS.
- (V) EXTEND THESE MEASURES FOR A MINIMUM RADIUS OF 600mm FROM CENTER OF EACH OUTLET BOX.  
IN ADDITION PROVIDE PUTTY PADS TO ALL ELECTRICAL BOXES WHERE MORE THAN ONE ELECTRICAL BOX IS INSTALLED IN A SINGLE STUD CAVITY.
- (W) SHIM FURRING CHANNELS AS REQUIRED TO PLUMB ALL CONCRETE AND BLOCK WALL BACKUP WALLS; ADJUST AFFECTED DIMENSION ACCORDINGLY.
- (X) USE GYPSUM BOARD BACKER BOARD ON ALL WALL SURFACES TO RECEIVE FRAME WALL.
- (Y) USE IMPACT RESISTANT GYPSUM BOARD ON ALL WALL SURFACES WITHIN LOADING ROOM T14.



THE ANNEX / 450 CECIL ST. OTTAWA ON K1R 6S3  
613.567.7888 PHONE / 613.567.7528 FAX  
csarchitect.com



PROJECT:  
TOMLINSON NEW BUILDING

DRAWING TITLE:  
PARTIAL 5/A002

DATE: 2016/11/23

SCALE: N/A

DRAWN BY: JK

JOB No: 574-15

DRAWING No:  
**ASK-45**

- P12** ELEVATOR BLOCK PARTITION ASSEMBLY 220mm  
 -16 GYPSUM BOARD BOTH SIDES  
 -22 METAL TOP-HAT CHANNELS VERTICAL @ 400 O/C  
 -190 CONCRETE BLOCK  
 (SEE STRUCTURAL FOR REINFORCING)
- P13** TYPICAL GYPSUM BOARD VENEER ASSEMBLY 38mm  
 -16 GYPSUM BOARD  
 -22 METAL TOP-HAT CHANNELS VERTICAL @ 400 O/C  
 -VARIES REINFORCED CONCRETE (SEE STRUCTURAL)
- P14** INSULATED GYPSUM BOARD VENEER ASSEMBLY VARIES  
 -16 GYPSUM BOARD  
 -10 MIL. POLY MEMBRANE  
 -41 METAL STUDS @ 400 O/C  
 -VARIES INSULATED CAVITY  
 -102mm XPS INSULATION  
 -350 REINFORCED CONCRETE (SEE STRUCTURAL)
- P15** PLATE GLASS PARTITION ASSEMBLY 15mm  
 -15mm GLASS PANELS (TYPE TL ABOVE 3500 TYPE TG BELOW  
 (SEE DETAILS FOR ANCHORAGE)
- P16** ALUMINUM FRAMED GLASS PARTITION ASSEMBLY 114mm  
 -114mm X 51 STOREFRONT MULLIONS  
 -TEMPERED GLASS UNIT
- P17** 1HR BEAM FIRE-PROTECTION MEMBRANE (SB-2)  
 -2X13mm TYPE X GYPSUM BOARD  
 -41mm METAL STUDS @ 400 O/C
- P18** 1 SIDED 64 STUD PARTITION ASSEMBLY 80mm  
 -16 GYPSUM BOARD BOTH SIDES  
 42 MINERAL WOOL SOUND ATTENUATING BLANKET  
 -64 METAL STUDS @ 400 O/C
- F1** TYPICAL FOUNDATION WALL (FROM T/O GRADE TO T/O FOOTING):  
 -GEOTEXTILE FABRIC  
 -13mm DRAINAGE BOARD  
 -102mm XPS INSULATION  
 -DAMP-PROOFING  
 -VARIES REINFORCED CONCRETE (SEE STRUCTURAL)  
 (EXTEND GEOTEXTILE FABRIC & DRAINAGE BOARD & DAMP-PROOFING TO U/S FOOTING)
- F2** TYPICAL RETAINING WALL (FROM T/O GRADE TO T/O FOOTING):  
 -VARIES REINFORCED CONCRETE (SEE STRUCTURAL)  
 -13mm DRAINAGE BOARD (HIGH SIDE)  
 -GEOTEXTILE FABRIC (HIGH SIDE)  
 (EXTEND GEOTEXTILE FABRIC & DRAINAGE BOARD TO U/S FOOTING)
- S1** ALUMINUM CLAD SOFFIT (ABOVE 2<sup>ND</sup> FLOOR):  
 -3mm ANODIZED ALUMINUM PANEL SYSTEM ON GALVANIZED STEEL OUTRIGGER STRUCTURE  
 @1500 O/C HORIZONTALLY  
 -95 AIR SPACE  
 -152mm SEMI RIGID MINERAL WOOL INSULATION  
 -P&S MEMBRANE  
 -CONCRETE DROP PANEL OR  
 -13mm EXTERIOR GYPSUM SHEATHING  
 -92mm METAL HORIZONTAL STUDS AT 407mm O/C
- S2** CONCRETE paneled SOFFIT (TEST-FACILITY OVERPASS):  
 -13mm FIBERGLASS REINFORCED CONCRETE PANEL  
 -46mm CONCEALED ANCHORING SYSTEM  
 -SUSPENDED EXTERIOR METAL STUD FRAMING



PROJECT:  
**TOMLINSON NEW BUILDING**

DRAWING TITLE:  
**PARTIAL 20/A002**

DATE: 2016/11/28

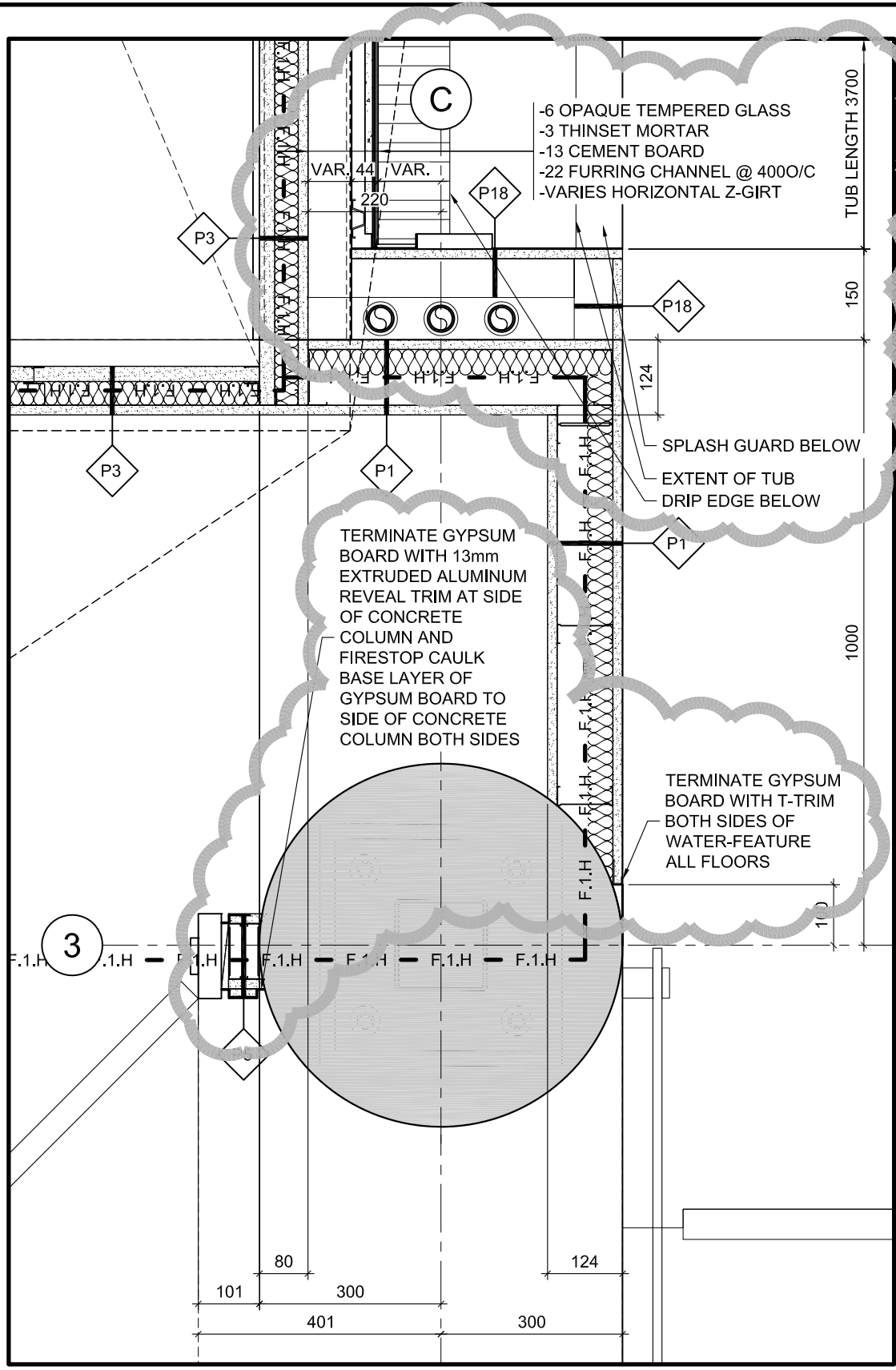
SCALE: N/A

DRAWN BY: JK

JOB No: 574-15

DRAWING No:

**ASK-48**



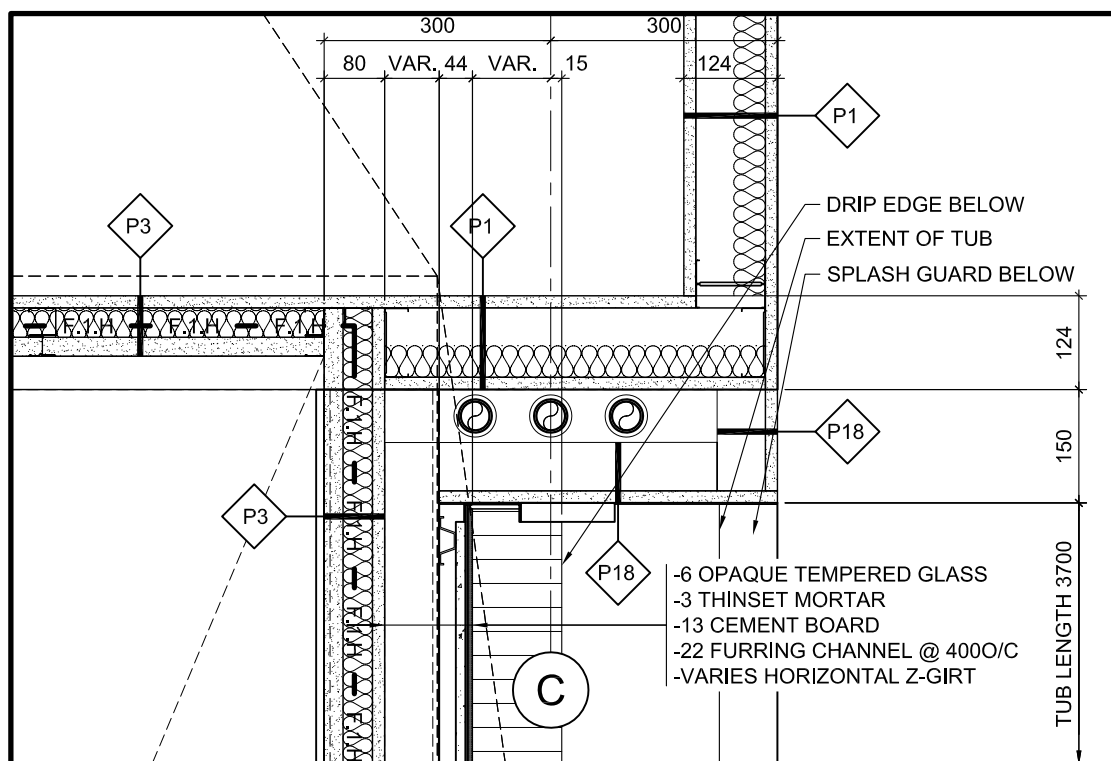
THE ANNEX / 450 CECIL ST. OTTAWA ON K1R 6S3  
 613.567.7888 PHONE / 613.567.7528 FAX  
 csarchitect.com



PROJECT:  
**TOMLINSON NEW BUILDING**

DRAWING TITLE:  
**REFERENCE DETAIL 21/A503**

DATE: 2016/11/28  
 SCALE: 1:10  
 DRAWN BY: JK  
 JOB No: 574-15  
 DRAWING No: **ASK-49**



**20** TYPICAL WATER FEATURE DETAIL  
**503** SCALE =1:10



THE ANNEX /45CCLES ST. OTTAWA ON K1R 6S3  
 613.567.7888 PHONE / 613.567.7528 FAX  
 csarchitect.com



PROJECT:  
 TOMLINSON NEW BUILDING

DRAWING TITLE:  
 REFERENCE NEW DET. AS INDICATED

DATE: 2016/11/28

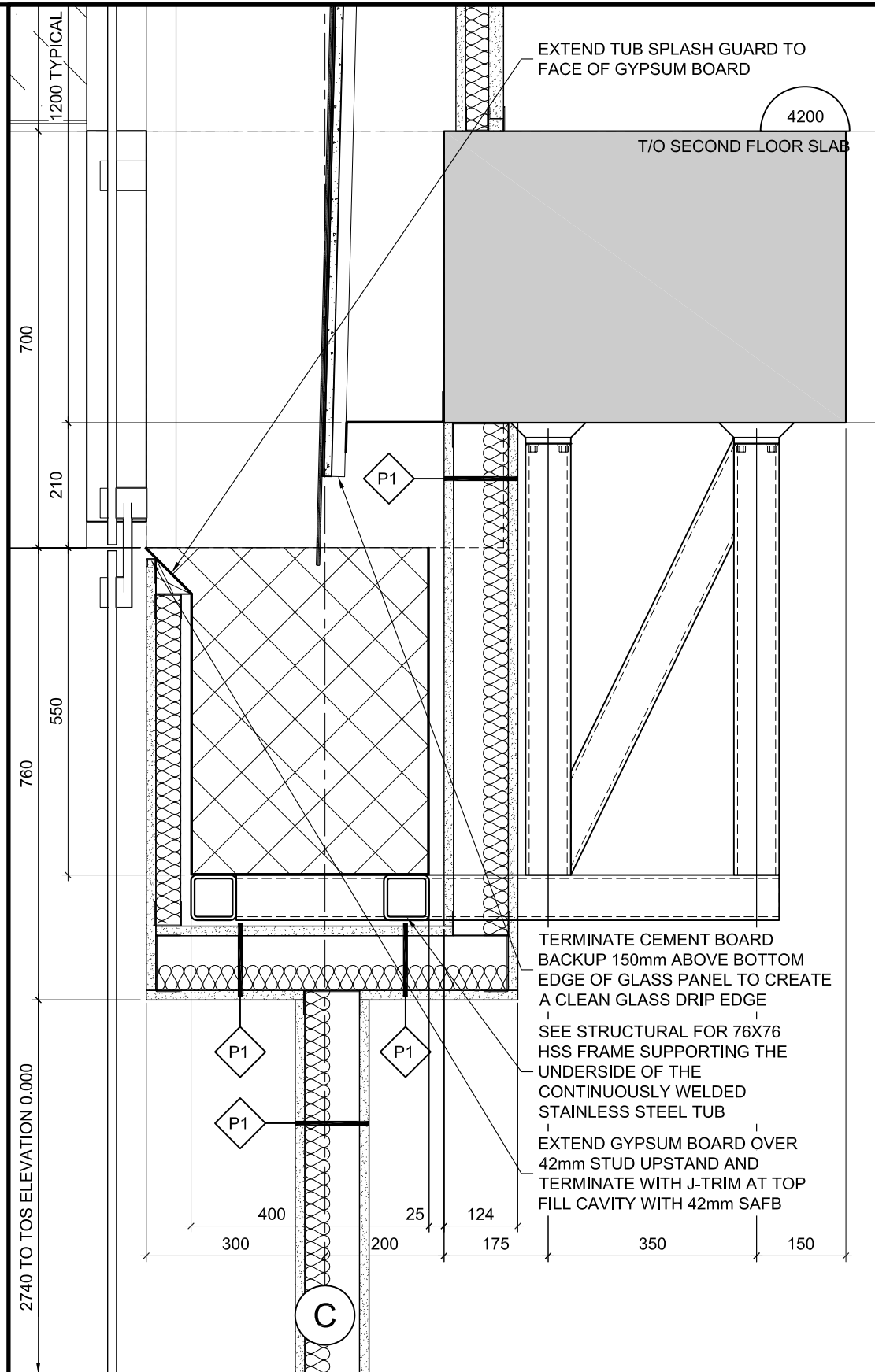
SCALE: AS INDICATED

DRAWN BY: JK

JOB No: 574-15

DRAWING No:

**ASK-50**



THE ANNEX / 450 CECIL ST. OTTAWA ON K1R 6S3  
 613.567.7888 PHONE / 613.567.7528 FAX  
 csarchitect.com

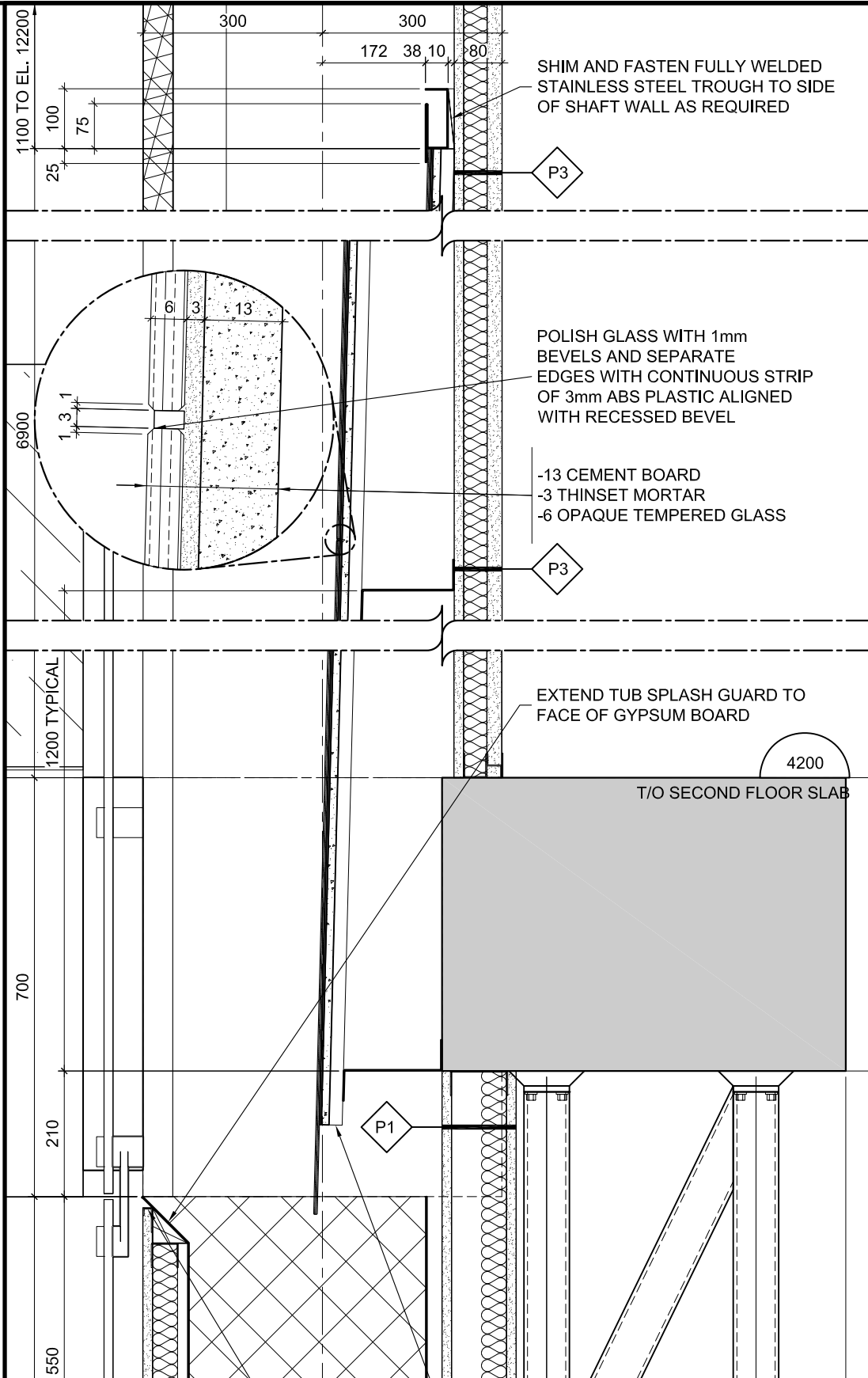


PROJECT:  
**TOMLINSON NEW BUILDING**

DATE: 2016/11/29  
 SCALE: 1:10  
 DRAWN BY: JK

DRAWING TITLE:  
**REFERENCE PART. NEW DETAIL 2/A604**

JOB No: 574-15  
 DRAWING No:



**Christopher  
Simmonds  
Architect**

THE ANNEX / 450 CECIL ST. OTTAWA ON K1R 6S3  
613.567.7888 PHONE / 613.567.7528 FAX  
csarchitect.com



PROJECT:  
**TOMLINSON NEW BUILDING**

DRAWING TITLE:  
**REFERENCE PART. NEW DETAIL 2/A604**

DATE: 2016/11/29

SCALE: 1:10

DRAWN BY: JK

JOB No: 574-15

DRAWING No: