

- GENERAL NOTES**
- All construction shall be completed using approved Hydro Ottawa construction standards (latest edition) and/or details specified in the project drawing(s).
 - External workforces may obtain the latest edition of applicable Hydro Ottawa standards and/or design specifications at www.hydroottawa.com.
 - Prior to undertaking work within the safe limits of approach to Hydro Ottawa overhead plant (as defined in the Occupational Health and Safety Act), contact the designated Hydro Ottawa project manager or Hydro Ottawa Service Desk at 613-738-6400, Option 4.
 - Obtain utility locates prior to commencement of any excavation.
 - Where excavation within 1.5 metres of Hydro Ottawa underground plant, contact the designated Hydro Ottawa project manager or Hydro Ottawa Service Desk at 613-738-6400, Option 4.

- PROJECT NOTES**
- Where existing grades are greater or less than 150mm of final grade, grade stakes indicating final grade shall be provided at, or along each installation as required by Hydro Ottawa.
 - As-Built drawing(s) shall be completed for this project. Each drawing issued for construction shall be marked "As-Built" with the appropriate Hydro Ottawa Construction Verification Program (CVP) sign-offs completed.
 - Note existing Hydro Ottawa easements and proposed requirements for easements in favour of Hydro Ottawa on project drawing(s).
 - All secondary service cables on private sites shall be installed, owned and maintained by the Developer unless otherwise noted by Hydro Ottawa.
 - The Developer shall supply all cable lugs and terminate all Customer-owned cables at the transformer.
 - Primary cable shall be installed in accordance with Hydro Ottawa specification GCS0004 unless otherwise noted.
 - Connection to existing concrete duct banks shall be completed by an approved Hydro Ottawa contractor. All work on existing Hydro Ottawa plant shall be completed in the presence of a Hydro Ottawa Inspector and in accordance with the Occupational Health and Safety Act.
 - Civil work shall be installed in accordance with Hydro Ottawa specification GCS0005 unless otherwise noted.
 - Completed ducts shall be rodded by the site contractor in the presence of a Hydro Ottawa Inspector and shall be clear of all extraneous material. A mandrel to nominal diameter of the duct and approved by Hydro Ottawa will be passed through each duct. One (1) 9mm polypropylene rope shall be left in each duct.
 - Underground secondary cable terminations and testing shall be in accordance with Hydro Ottawa guideline GCG0001, by others.

PROJECT DETAILS

SYSTEM INFORMATION (TO BE CONFIRMED WITH SYSTEM OFFICE)	
AFFECTED CIRCUIT(S)	FAL01
PRIMARY VOLTAGE(S)	27.6kV
SECONDARY VOLTAGE(S)	1200A - 347/600V

INFORMATION		EXISTING CABLE / CONDUCTOR	
EXISTING POLE OWNER	N/A	PRIMARY	28kV 1/0 XLPE AL
PROPOSED POLE OWNER	N/A	NEUTRAL	28kV 1000MCM XLPE AL
RULING SPAN OF PROP. POLES	N/A	SECONDARY	CONCENTRIC
ASSESSED CLASS OF SOIL	N/A	SECONDARY	N/A
SWITCH GEAR	Ex 4 WAY SF6	PROPOSED CABLE / CONDUCTOR	
TRANSFORMER	1000kVA	PRIMARY	28kV 1/0 XLPE AL
POWER FUSE	150K	NEUTRAL	CONCENTRIC
CURRENT LIMITING FUSE	3545125M71M	SECONDARY	CUSTOMER OWNED
ACCESS ROUTE	NORTEL DRIVE		

DRAWING INDEX / REFERENCE

1.	Sheet 1 of 2	PLAN, LEGEND, CABLE TABLE
2.	Sheet 2 of 2	MH DETAILS, SLD, CONSTRUCTION DATA TABLE
3.		
4.		

ASSOCIATED PROJECTS COM TOH TUG RES SUB

REFERENCED PROJECTS 92010311, 92010597

HYDRO OTTAWA LIMITED - FINAL RECORD OF INSPECTION & CVP CERTIFICATE

THIS IS TO CERTIFY THAT THE CONSTRUCTION WORK COMPLETED AND SPECIFIED ON THE ABOVE-MENTIONED PLANT IS CONSISTENT WITH THE APPROVED PLAN, STANDARD DESIGNS OR WORK INSTRUCTION AND THAT APPROVED EQUIPMENT HAS BEEN USED.

P.M. TO INITIAL WHEN APPLICABLE	TYPE OF INSPECTION REQ'D	DATE COMPLETED	VERIFIED BY	POSITION	SIGNATURE
1)	CIVIL PLANT				
2)	DISTRIBUTION/STATIONS PLANT				
3)					

REV.	DATE:	CHANGE:	PREP	CHKD	APPD

HydroOttawa

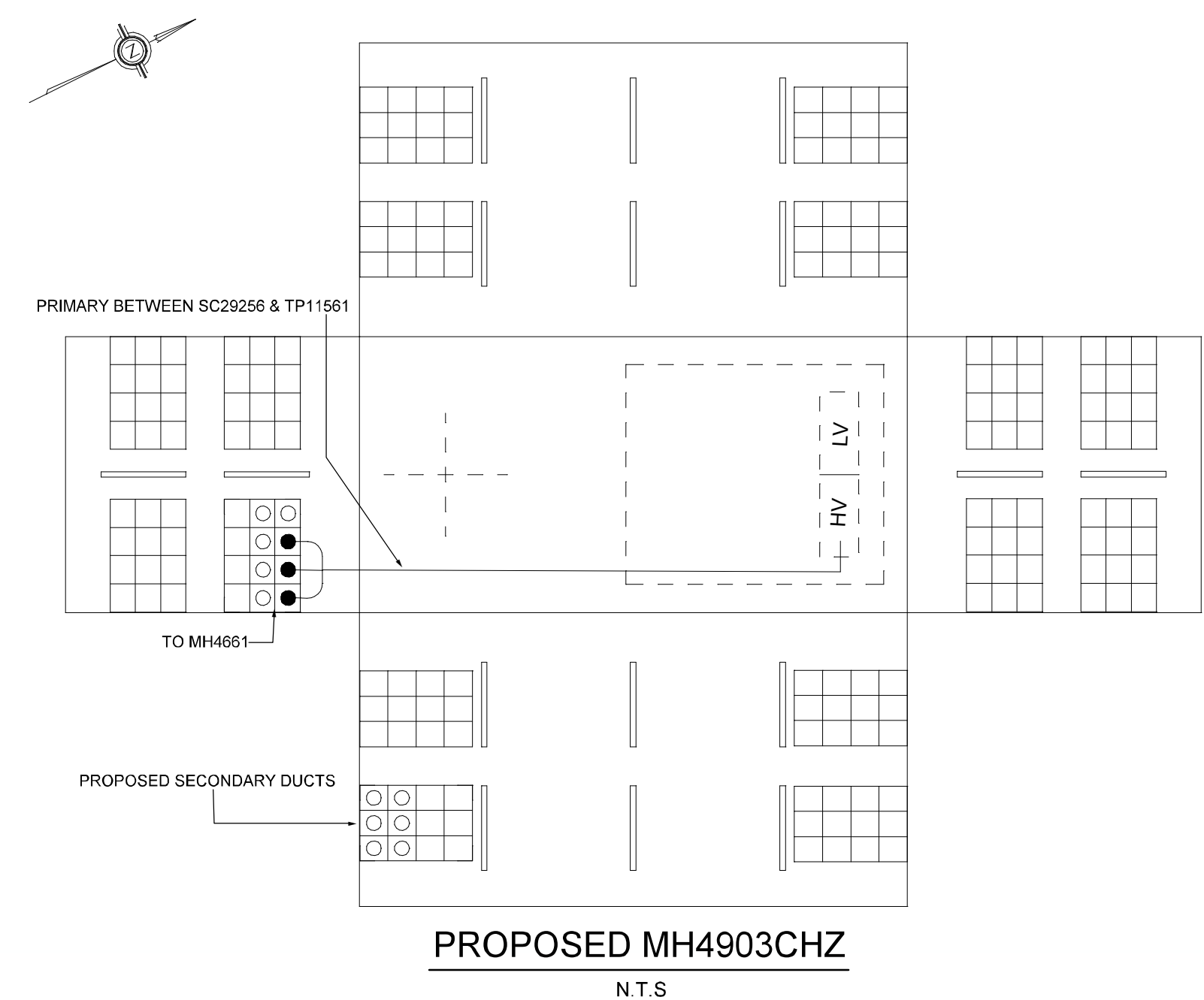
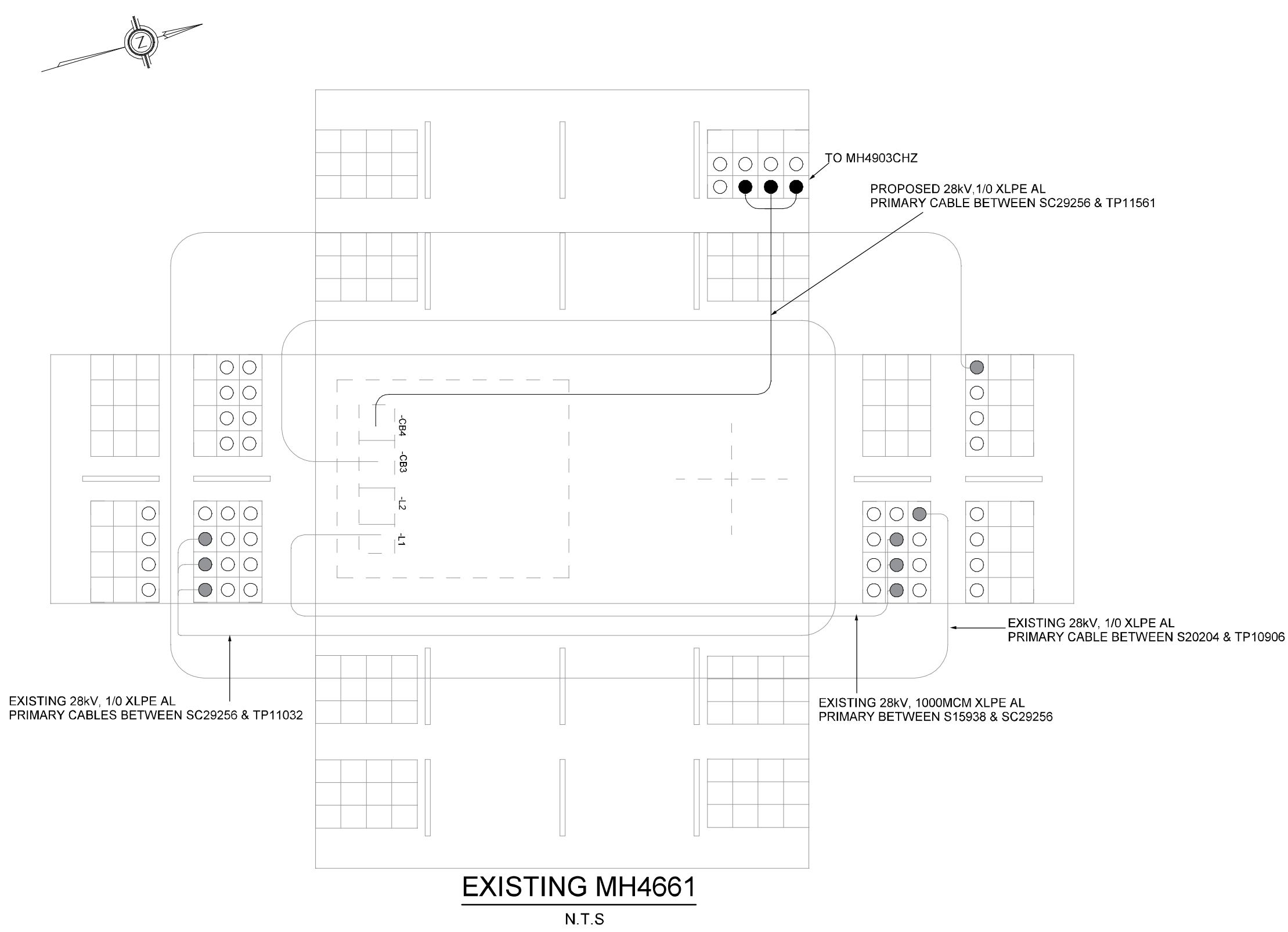
4501 STRANDHERD DRIVE
TOMLINSON HEADQUARTERS

PREP: S. JORDAN / A.I.
CHKD: S. WARREN
APPD: J. PEGG P. ENG
DATE: 09/29/2016
SCALE: N.T.S. @ ANSI D

TITLE: 4501 STRANDHERD DRIVE TOMLINSON HEADQUARTERS

NO: 92012445-COM

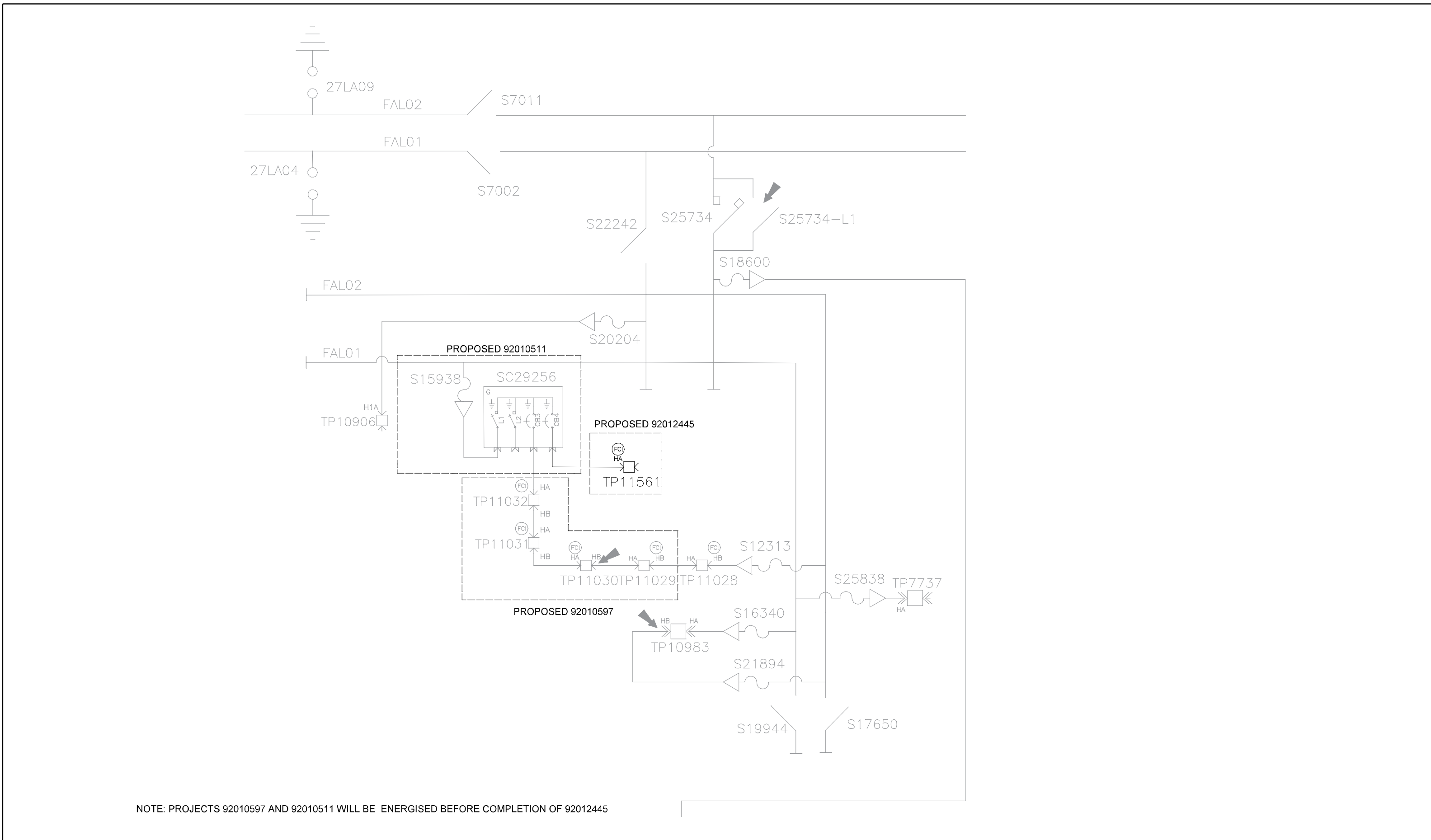
2 OF 2 REV 0



CONSTRUCTION DATA TABLE - UNDERGROUND STRUCTURES & DEVICES

Structure Symbology: PS - Proposed Structure, ES - Existing Structure, RS - Remove Structure, AS - Abandon Structure

Structure #	Nomenclature ID#	Type of Underground Structure or Device	Construction Standard #'s & Detail #'s Used	Other Comments
PS1	MH4903CHZ	TWO WAY PRECAST SWITCHING MANHOLE (612) WITH TRANSFORMER PAD	UCS0025 UCS0035 UCS0020 UCS0021	By others, using a qualified Hydro Ottawa civil contractor.
PS2	TP11561	THREE PHASE PADMOUNT TRANSFORMER	UTS0010 UJS0401 UTS0038	By Hydro Ottawa.
PS3		PROTECTIVE BOLLARDS (4) AND GROUNDING	UFS0001 UGS0005	By others, using a qualified Hydro Ottawa civil contractor.
PS4A		CONCRETE ENCASED DUCT BANK	UDS0001, Detail F UDS0007	By others, using a qualified Hydro Ottawa civil contractor.
PS4B		CONCRETE ENCASED DUCT BANK & CORE DRILLS	UDS0001, Detail F UDS0007 UCS0019	By Hydro Ottawa. Provide final duct bank connection to manhole within 1.5m of energized structure. Provide 8 x 100mm diameter core drills at manhole MH4661.
PS5		PRIVATE SECONDARY CABLES		By others.
ES1	MH4661 (SC29256)	TWO WAY PRECAST SWITCHING MANHOLE (612)	UCS0025 UCS0028 UCS0020 UCS0021	Existing to remain, installed under HOL project 92010311.
ES2	SC29256	4 WAY PADMOUNTED SWITCH	USS0037	Existing to remain, installed under HOL project 92010311.



NOTE: PROJECTS 92010597 AND 92010511 WILL BE ENERGISED BEFORE COMPLETION OF 92012445

Hydro Ottawa, 4501 Strandherd Drive, Ottawa, Ontario K1L 1A7
 613-738-6400
 www.hydroottawa.com