



R.W. TOMLINSON - NEW HEAD OFFICE

TAL-CO Building Innovations
1341-2 Coker Street
Greely, Ontario K4P 1A1
Tel: 613-821-3959
Fax: 613-821-2938

Issue date: 30-Jan-16
Revision date: N/A
Revision #: N/A

CLARIFICATION #3 – Lot 2A

The following modifications and clarifications are to be accounted for on this project. As well, when entering into the Form of Agreement to do the work, they shall become a part thereof.

Instruction/Clarifications:

Please be advised that Clarification #3 for Lot 2A has been issued for the above-mentioned project, as per the details below.

1. New Specifications, as noted below, have been issued
09 06 00 - ROOM FINISH SCHEDULE
2. Refer to ASK's – 66, 67, 68, 69, 70
3. Revised Bid Breakdown

Revised Drywall Bid breakdown pricing is required no later than **Thursday, February 2nd, at 12:00PM.**

Drawings and Documents are available to view/download at www.tal-co.com

Under the Active Projects heading, select Project Management, and RW Tomlinson – New Head Office.

Reminder: It is your responsibility to consult ALL documents, drawings, sketches, Clarifications, Addenda, and Supplemental Instructions.

For questions or further information, please contact the office by e-mail at info@tal-co.com.

End of Clarification No. 3 – Lot 2A

574-15
TOMLINSON Building
Ottawa Ontario

NO	NAME	FLOOR		BASE		WALLS		CEILING		REMARKS
		MAT	FIN	MAT	FIN	MAT	FIN	MAT	FIN	
GROUND FLOOR										
100	ATRIUM	CT1 ST	-	-	-	CONC GYP CT AT1	EXP P	CONC AT1	CONC AT1	CPT1 bridge flooring, concrete wall finish – board form vertical, water wall tile, acoustic panels in front of water wall. BR base only at GYP walls. No Base at glass and concrete partitions.
101	EAST VESTIBULE	CT1	-	-	-	CONC	EXP	CONC	EXP	
102	WEST VESTIBULE	CT1	-	-	-	CONC	EXP	CONC	EXP	
103	ELEVATOR LOBBY	CT1	-	BR MB	-	GYP	P1	CONC	EXP	BR base at GYP partitions, MB base at exposed concrete walls
104	IT CLOSET	CT1	-	CT	-	CONC GYP	EXP P1	CONC	EXP	
105	MEN'S WASHROOM	CT5	-	CT	-	CONC GYP CT6 CT8		ACT1	-	CT base to match floor tile (also align joints). Refer to interior elevations for locations
106	WOMEN'S WASHROOM	CT5	-	CT	-	CONC GYP CT6 CT8		ACT1	-	CT base to match floor tile (also align joints). Refer to interior elevations for locations
107	UNIVERSAL WASHROOM	CT5	-	CT	-	GYP CT	P1 CT4 CT6	ACT1	-	CT base to match floor tile (also align joints) Refer to interior elevations for locations
108	JANITOR'S ROOM	CT1	-	CT	-	CONC GYP	EXP P1	GYP	-	
109	EXIT STAIR A	CONC	EXP	-	-	CONC	EXP	CONC	EXP P2	
110	ELECTRICAL/IT CLOSET	CT1	-	CT	-	CONC GYP	EXP P1	CONC	EXP P1	

NO	NAME	FLOOR		BASE		WALLS		CEILING		REMARKS
		MAT	FIN	MAT	FIN	MAT	FIN	MAT	FIN	
111	MAIL ROOM	CT1	-	BR	-	GYP	P1	GYP	P1	
112	EXIT STAIR B	CONC	Ext	-	-	CONC	EXP	CONC	EXP P2	
113	COAT CLOSET	CT1	-	BR	-	CONC GYP	EXP	CONC	EXP P1	
114	CAFETERIA	CT1	-	BR MB	-	CONC GYP AT1 CT3 CT1	EXP P1	CONC AT1 AT2	EXP	BR base at GYP partitions, MB base at exposed concrete walls
115	KITCHEN	HF		RB	-	CONC GYP	HW	CONC	EXP	RB base-refer to specifications for Hygienic wall covering and hygienic floor covering
116	ELECTRICAL ROOM	CONC		RB	-	CONC GYP	EXP P1	CONC	EXP	Sealer to concrete floor
117	HOLDING ROOM	RF		RB	-	GYP	P1	CONC	EXP	
117B	HOLDING ROOM VESTIBULE	RF		RB	-	GYP	P1	CONC	EXP	
118	EXIT CORRIDOR	CT1	-	MB	-	GYP CONC	EXP P1	GYP	P1	
119	LOADING VESTIBULE	CT1	-	MB	-	GYP	P1	CONC	EXP	
120	OPEN OFFICE	CPT 1,2,3,4	-	BR MB	-	GYP	P	CONC	EXP	BR base at GYP partitions, MB base at exposed concrete walls
121	BREAKOUT ROOM	CPT 1,2,3,4	-	BR	-	GYP	P	CONC	EXP	
122	OFFICE	CPT 1,2,3,4	-	BR	-	GYP	P	CONC	EXP	
123	OFFICE	CPT 1,2,3,4	-	BR	-	GYP	P	CONC	EXP	
124	WATER ENTRY ROOM	CONC	-	MB	-	GYP	P	CONC	EXP	Sealer to concrete floor

NO	NAME	FLOOR		BASE		WALLS		CEILING		REMARKS
		MAT	FIN	MAT	FIN	MAT	FIN	MAT	FIN	
125	OFFICE	CPT 1,2,3,4	-	BR MB	-	GYP	P	CONC	EXP	BR base at GYP partitions, MB base at exposed concrete walls
126	OFFICE	CPT 1,2,3,4	-	BR MB	-	GYP	P	CONC	EXP	BR base at GYP partitions, MB base at exposed concrete walls
127	UNUSED									
128A	TRAINING ROOM A	CT1	-	BR MB	-	CONC GYP	EXP P1	CONC GYP	EXP P1	GYP Bulkhead at Folding Partition. BR base at GYP partitions, MB base at exposed concrete walls
129A	TRAINING ROOM B	CT1	-	BR MB	-	CONC GYP	EXP P1	CONC GYP	EXP P1	GYP Bulkhead at Folding Partition. BR base at GYP partitions, MB base at exposed concrete walls
130	EXIT CORRIDOR B	CT1	-	MB	-	GYP	P1	GYP	P1	
131	TERRACE VESTIBULE	CT1	-	MB	-	GYP	P1	CONC	EXP	
132	GYM	CPT5	-	RB MB	-	CONC GYP	EXP P	CONC	EXP	P colour TBD. BR base at GYP partitions, MB base at exposed concrete walls
133	CLOAK ROOM	CT1	-	RB MB	-	CONC GYP	EXP P	CONC	EXP	P colour TBD. BR base at GYP partitions, MB base at exposed concrete walls
134	MEN'S VESTIBULE	CT5	-	CT	-	GYP	P1	GYP	P1	CT base to match floor tile (also align joints)
135	MEN'S WASHROOM	CT5	-	CT	-	GYP CT6	P1	GYP	P1	CT base to match floor tile (also align joints)
136	MEN'S CHANGEROOM	CT5	-	CT	-	GYP	P1	GYP	P1	CT base to match floor tile (also align joints)
137	WOMEN'S VESTIBULE	CT5	-	CT	-	CONC GYP	EXP P1	GYP	P1	CT base to match floor tile (also align joints)
138	WOMEN'S WASHROOM	CT5	-	CT	-	CONC GYP CT6	EXP P1	GYP	P1	CT base to match floor tile (also align joints)
139	WOMEN'S CHANGEROOM	CT5	-	CT	-	GYP CT6 CT7 CT8	P1	GYP	P1	CT base to match floor tile (also align joints)

NO	NAME	FLOOR		BASE		WALLS		CEILING		REMARKS
		MAT	FIN	MAT	FIN	MAT	FIN	MAT	FIN	
SECOND FLOOR										
200	ATRIUM	CPT1 EP	EP P1	RB MB		CONC	EXP. / P1	-	-	Bridge -CPT 1, EP on Stair C/D risers and treads. P1 on GYP walls and remaining stair finishes
201	ELEVATOR LOBBY	CPT 1,2,3,4		BR		GYP	P1	CONC.	EXP.	
202	OPEN OFFICE	CPT 1,2,3,4		RB MB	-	GYP	P	CONC.	EXP.	BR base at GYP partitions, MB base at exposed concrete walls. P colours TBD
203	KITCHEN	CT1		BR MB		CONC GYP	EXP. / P1	AT2		BR base at GYP partitions, MB base at exposed concrete walls. P colours TBD
204	IT CLOSET	RF	-	RB	-	GYP	P1	CONC.	EXP./P 1	
205	MEN'S WASHROOM	CT5	-	CT	-	CONC GYP CT6 CT8		ACT1	-	CT base to match floor tile (also align joints). Refer to interior elevations for locations
206	WOMEN'S WASHROOM	CT5	-	CT	-	CONC GYP CT6 CT8		ACT1	-	CT base to match floor tile (also align joints). Refer to interior elevations for locations
207	ELECTRICAL CLOSET	RF	-	RB	-	GYP	P1	CONC.	EXP./P 1	
208	JANITOR'S ROOM	CT1	-	CT	-	CONC GYP	EXP. / P1	CONC.	EXP.	
209	EXIT STAIR A	CONC	EXP	-	-	CONC	EXP	CONC.	EXP	

NO	NAME	FLOOR		BASE		WALLS		CEILING		REMARKS
		MAT	FIN	MAT	FIN	MAT	FIN	MAT	FIN	
210	ELECTRICAL CLOSET	RF	-	RB	-	CONC GYP	EXP. P1	CONC.	EXP P1	
211	UNIVERSAL WASHROOM	CT5		CT	-	GYP CT	P1 CT4 CT6	ACT1		CT base to match floor tile (also align joints)
212	EXIT STAIR B	CONC	EXP	-	-	CONC	EXP	CONC	EXP P2	
213	IT CLOSET	RF	-	RB	-	CONC GYP	EXP P1	CONC	EXP P1	
214	BREAKOUT ROOM	CPT 1,2,3,4		BR	-	GYP	P	CONC	EXP	P colours TBD
215	PHONE BOOTH	CPT 1,2,3,4		BR		GYP	P	CONC	EXP	P colours TBD
216	OFFICE	CPT 1,2,3,4		BR	-	GYP	P	CONC	EXP	P colours TBD
217	OFFICE	CPT 1,2,3,4		BR		GYP	P	CONC	EXP	P colours TBD
218	BREAKOUT ROOM	CPT 1,2,3,4		BR		GYP	P	CONC	EXP	P colours TBD
219	OFFICE	CPT 1,2,3,4		BR	-	GYP	P	CONC	EXP	P colours TBD
220	OFFICE	CPT 1,2,3,4		BR		GYP	P	CONC	EXP	P colours TBD
221	LARGE MEETING ROOM	CPT 3		BR	-	GYP	P	CONC	EXP	P colours TBD
222	MEETING ROOM	CPT 1,2,3,4		BR	-	GYP	P	CONC	EXP	P colours TBD
223	OFFICE	CPT 1,2,3,4		BR	-	GYP	P	CONC	EXP	P colours TBD
224	OFFICE	CPT		BR	-	GYP	P	CONC	EXP	P colours TBD

NO	NAME	FLOOR		BASE		WALLS		CEILING		REMARKS
		MAT	FIN	MAT	FIN	MAT	FIN	MAT	FIN	
225	OFFICE	1,2,3,4 CPT 1,2,3,4		BR	-	GYP	P	CONC	EXP	P colours TBD
226	OFFICE	CPT 1,2,3,4		BR	-	GYP	P	CONC	EXP	P colours TBD
227	OFFICE	CPT 1,2,3,4		BR	-	GYP	P	CONC	EXP	P colours TBD
THIRD FLOOR										
300	ATRIUM	CPT 1 EP	EP P1	BR MB		CONC GYP	EXP P1	-	-	Bridge -CPT 1, EP on Stair C/D risers and treads. P1 on GYP walls and remaining stair finishes
301	ELEVATOR LOBBY	CPT 1,2,3,4		BR		GYP	P1	CONC	EXP	
302	OPEN OFFICE	CPT 1,2,3,4		BR MB	-	GYP	P	CONC	EXP	BR base at GYP partitions, MB base at exposed concrete walls. P colours TBD
303	KITCHEN	CT1		BR MB		CONC GYP	EXP P1	AT2		BR base at GYP partitions, MB base at exposed concrete walls. P colours TBD
304	IT CLOSET	RF	-	RB	-	GYP	P1	CONC	EXP P1	
305	MEN'S WASHROOM	CT5	-	CT	-	CONC GYP CT6 CT8		ACT1	-	CT base to match floor tile (also align joints). Refer to interior elevations for locations
306	WOMEN'S WASHROOM	CT5	-	CT	-	CONC GYP CT6 CT8		ACT1	-	CT base to match floor tile (also align joints). Refer to interior elevations for locations
307	ELECTRICAL CLOSET	RF	-	RB	-	GYP	P1	CONC	EXP P1	

NO	NAME	FLOOR		BASE		WALLS		CEILING		REMARKS
		MAT	FIN	MAT	FIN	MAT	FIN	MAT	FIN	
308	JANITOR'S ROOM	CT1	-	CT	-	CONC GYP	EXP P1	CONC	EXP	
309	EXIT STAIR A	CONC	EXP	-	-	CONC	EXP	CONC	EXP P2	
310	ELECTRICAL CLOSET	RF	-	RB	-	CONC GYP	EXP P1	CONC	EXP P1	
311	UNIVERSAL WASHROOM	CT5		CT	-	GYP CT	P1 CT4 CT6	ACT1		CT base to match floor tile (also align joints)
312	EXIT STAIR B	CONC	EXP	-	-	CONC	EXP	CONC	EXP P2	
313	IT CLOSET	RF	-	RB	-	CONC GYP	EXP P1	CONC	EXP P1	
314	OFFICE	CPT 1,2,3,4		BR	-	GYP	P	CONC	EXP	P colours TBD
315	OFFICE	CPT 1,2,3,4		BR	-	GYP	P	CONC	EXP	P colours TBD
316	PHONE BOOTH	CPT 1,2,3,4		BR	-	GYP	P	CONC	EXP	P colours TBD
317	PHONE BOOTH	CPT 1,2,3,4		BR	-	GYP	P	CONC	EXP	P colours TBD
318	OFFICE	CPT 1,2,3,4		BR	-	GYP	P	CONC	EXP	P colours TBD
319	OFFICE	CPT 1,2,3,4		BR	-	GYP	P	CONC	EXP	P colours TBD
320	OFFICE	CPT 1,2,3,4		BR	-	GYP	P	CONC	EXP	P colours TBD
321	PHONE BOOTH	CPT 1,2,3,4		BR	-	GYP	P	CONC	EXP	P colours TBD

NO	NAME	FLOOR		BASE		WALLS		CEILING		REMARKS
		MAT	FIN	MAT	FIN	MAT	FIN	MAT	FIN	
322	MEETING ROOM	CPT 1,2,3,4		BR	-	GYP	P	CONC	EXP	P colours TBD
323	OFFICE	CPT 1,2,3,4		BR	-	GYP	P	CONC	EXP	P colours TBD
324	OFFICE	CPT 1,2,3,4		BR	-	GYP	P	CONC	EXP	P colours TBD
325	OFFICE	CPT 1,2,3,4		BR	-	GYP	P	CONC	EXP	P colours TBD
326	OFFICE	CPT 1,2,3,4		BR	-	GYP	P	CONC	EXP	P colours TBD
327	OFFICE	CPT 1,2,3,4		BR	-	GYP	P	CONC	EXP	P colours TBD
328	OFFICE	CPT 1,2,3,4		BR	-	GYP	P	CONC	EXP	P colours TBD
329	MEETING ROOM	CPT 1,2,3,4		BR	-	GYP	P	CONC	EXP	P colours TBD
330	OFFICE	CPT 1,2,3,4		BR	-	GYP	P	CONC	EXP	P colours TBD
331	OFFICE	CPT 1,2,3,4		BR	-	GYP	P	CONC	EXP	P colours TBD
FOURTH FLOOR										
400	OPEN (ATRIUM)	EP	EP P1	BR MB		CONC GYP	EXP P1	-	-	EP on Stair C/D risers and treads. P1 on GYP walls and remaining stair finishes
401	ELEVATOR LOBBY	CPT 1,2,3,4		BR		GYP	P1	CONC	EXP	
402	OPEN OFFICE	CPT 1,2,3,4		BR MB	-	GYP	P	CONC	EXP	BR base at GYP partitions, MB base at exposed concrete walls. P colours TBD

NO	NAME	FLOOR		BASE		WALLS		CEILING		REMARKS
		MAT	FIN	MAT	FIN	MAT	FIN	MAT	FIN	
403	KITCHEN	CT1		BR MB		CONC GYP	EXP P1	AT2		BR base at GYP partitions, MB base at exposed concrete walls. P colours TBD
404	IT CLOSET	RF	-	RB	-	GYP	P1	CONC	EXP P1	
405	MEN'S WASHROOM	CT5	-	CT	-	CONC GYP CT6 CT8		ACT1	-	CT base to match floor tile (also align joints). Refer to interior elevations for locations
406	WOMEN'S WASHROOM	CT5	-	CT	-	CONC GYP CT6 CT8		ACT1	-	CT base to match floor tile (also align joints). Refer to interior elevations for locations
407	ELECTRICAL CLOSET	RF	-	RB	-	GYP	P1	CONC	EXP P1	
408	JANITOR'S ROOM	CT1	-	CT	-	CONC GYP	EXP P1	CONC	EXP	
409	EXIT STAIR A	CONC	EXP	-	-	CONC	EXP	CONC	EXP P2	
410	ELECTRICAL CLOSET	RF	-	RB	-	CONC GYP	EXP P1	CONC	EXP P1	
411	UNIVERSAL WASHROOM	CT5		CT	-	GYP CT	P1 CT4 CT6	ACT1		CT base to match floor tile (also align joints)
412	EXIT STAIR B	CONC	EXP	-	-	CONC	EXP	CONC	EXP P2	
413	IT CLOSET	RF	-	RB	-	CONC GYP	EXP P1	CONC	EXP P1	
414	MEETING ROOM	CPT		BR	-	GYP	P	CONC	EXP	

NO	NAME	FLOOR		BASE		WALLS		CEILING		REMARKS
		MAT	FIN	MAT	FIN	MAT	FIN	MAT	FIN	
415	OFFICE	1,2,3,4 CPT		BR	-	GYP	P	CONC	EXP	
416	OFFICE	1,2,3,4 CPT		BR	-	GYP	P	CONC	EXP	
417	OFFICE	1,2,3,4 CPT		BR	-	GYP	P	CONC	EXP	
418	OFFICE	1,2,3,4 CPT		BR	-	GYP	P	CONC	EXP	
419	OFFICE	1,2,3,4 CPT		BR	-	GYP	P	CONC	EXP	
420	PHONE BOOTH	1,2,3,4 CPT		BR	-	GYP	P	CONC	EXP	
421	OFFICE	1,2,3,4 CPT		BR	-	GYP	P	CONC	EXP	
422	SERVER ROOM	CONC		MB	-	GYP	P	CONC	EXP	Sealer to Concrete floor
423	OFFICE	1,2,3,4 CPT		BR	-	GYP	P	CONC	EXP	
424	OFFICE	1,2,3,4 CPT		BR	-	GYP	P	CONC	EXP	
425	OFFICE	1,2,3,4 CPT		BR	-	GYP	P	CONC	EXP	
426	OFFICE	1,2,3,4 CPT		BR	-	GYP	P	CONC	EXP	
427	OFFICE	1,2,3,4 CPT		BR	-	GYP	P	CONC	EXP	
428	OFFICE	1,2,3,4 CPT		BR	-	GYP	P	CONC	EXP	
429	BREAKOUT ROOM	1,2,3,4 CPT		BR	-	GYP	P	CONC	EXP	
430	OFFICE	CPT		BR	-	GYP	P	CONC	EXP	

NO	NAME	FLOOR		BASE		WALLS		CEILING		REMARKS
		MAT	FIN	MAT	FIN	MAT	FIN	MAT	FIN	
431	OFFICE	1,2,3,4 CPT		BR	-	GYP	P	CONC	EXP	
432	OFFICE	1,2,3,4 CPT		BR	-	GYP	P	CONC	EXP	
433	OFFICE	1,2,3,4 CPT		BR	-	GYP	P	CONC	EXP	
434	OFFICE	1,2,3,4 CPT		BR	-	GYP	P	CONC	EXP	
435	OFFICE	1,2,3,4 CPT		BR	-	GYP	P	CONC	EXP	
436	MEETING ROOM	1,2,3,4 CPT		BR	-	GYP	P	CONC	EXP	
437	OFFICE	1,2,3,4 CPT		BR	-	GYP	P	CONC	EXP	
438	OFFICE	1,2,3,4 CPT		BR	-	GYP	P	CONC	EXP	
439	OFFICE	1,2,3,4 CPT		BR	-	GYP	P	CONC	EXP	
440	OFFICE	1,2,3,4 CPT		BR	-	GYP	P	CONC	EXP	
441	BREAKOUT ROOM	1,2,3,4 CPT		BR	-	GYP	P	CONC	EXP	
442	TENDER CLOSING ROOM	1,2,3,4 CPT		BR	-	GYP	P	CONC	EXP	

1.1 LEGEND

- .1 AC. Exposed Architectural Concrete, unsealed.
- .2 ACT(#) Ceiling Tile In accordance with Section 09 51 13.
 - .1 ACT Metalworks M11 White, Armstrong.

NO	NAME	FLOOR		BASE		WALLS		CEILING		REMARKS
		MAT	FIN	MAT	FIN	MAT	FIN	MAT	FIN	

- .3 AT(#)
Acoustic Ceiling Panel: In accordance with Section 09 51 13.
- .1 AT1
Hard Side Cloud White, *Kinetics*.
- .2 AT2
Hard Side Cloud Sunshine, *Kinetics*.
- .4 AW(#)
Acoustic Wall Panel: In accordance with Section 09 53 00.
- .5 BR
Reveal Baseboard: 2" high Brushed Aluminum base with 1/4" cove bend recessed in GYP. 1/2". In accordance with Section 09 27 10.
- .6 CH
Concrete Hardener Floor Finish: In accordance with Section 03 35 05.
- .7 CPT
Carpet Tile: In accordance with Section 09 68 13 - Tile Carpeting.
- .1 CPT1
On Line 105269, Marigold, *Interface* (25cm x 100cm).
- .2 CPT2
Concrete Viva Colores 101180, Plateado, *Interface* (50cm x 50cm cut to (2) 25cm x 50cm).
- .3 CPT3
Human Nature 104214, Nickel, *Interface* (25cm x 100cm).
- .4 CPT4
Felt 101834, Monochrome, *Interface* (50cm x 50cm cut to (2) 25cm x 50cm).
- .5 CPT5
On Line, 105266 Aquamarine, *Interface* (25cm x 100cm).
- .8 CT(#)
Ceramic Tile: In accordance with Section 09 30 05 - Ceramic Tiling.
- .1 CT1
Interno 9, Pearl, Lap. RT., *Ciot* (60cm x 120cm).
- .2 CT2
Water Wall Stone/Tile TBD Blue.
- .3 CT3
Sistem C Turchese Citta, Arch., *Ciot* (10cm x 30cm).
- .4 CT4
Sistem C Ocro Citta, *Ciot* (10cm x30cm).
- .5 CT5
Blocks 5.0, White, Lap. RT., *Ciot* (60cm x 120cm).
- .6 CT6
Blocks 5.0, Dark, Lap. RT., *Ciot* (60cm x 120cm).
- .7 CT7
Light Seta Fumo, *Ciot* (5cmx10cm).
- .8 CT8
Super Super, White, *Ciot* (30cm x 60cm).
- .9 EP
Epoxy Coating.
- .10 GYP
Gypsum Board: In accordance with Section 09 21 16 - Gypsum Board Assemblies.
- .11 HF
Hygienic Flooring: In accordance with Section 09 72 00.

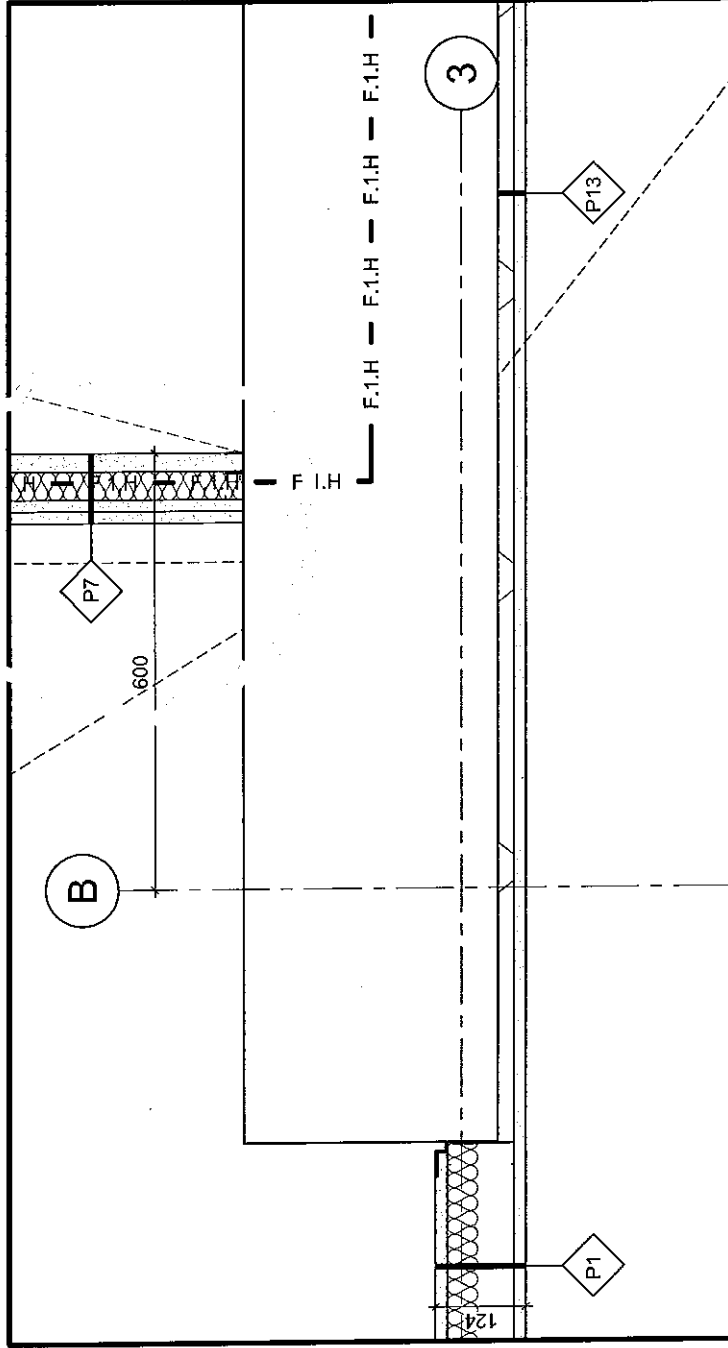
NO	NAME	FLOOR		BASE		WALLS		CEILING		REMARKS
		MAT	FIN	MAT	FIN	MAT	FIN	MAT	FIN	

- .12 HW Hygienic Wall covering: In accordance with Section 09 72 00.
.1 Altro Whiterock, White W103-W104, Altro.
- .13 MB Brushed Metal Base: 2" high Brushed Aluminum base with 1/4" cove bend, flush mounted to wall. In accordance with Section 09 27 10.
.14 P# Paint Finish: In accordance with Section 09 90 15 - Painting. Refer to Paint Schedule for colour.
.1 P1 Quiet Hideaway, **eggshell finish**, Dulux (white).
.2 P2 Colour TBD.
.3 P3 Colour TBD.
- .15 RB Resilient Floor Base: In accordance with Section 09 65 16 - Resilient Sheet Flooring.
- .16 RF Resilient Flooring: In accordance with Section 09 65 16 - Resilient Sheet Flooring.
.1 Marmoleum Walton Uni, 171 Cement, Forbo (2.5mm).
- .17 SL Sealed Concrete: In accordance with Section 03 35 00 - Concrete Finishing.
- .18 SF **Safety Flooring**
.1 Altro Classic 25, Graphite X2546R11, Altro.
- .19 ST Stone.
.1 ST1 Ledgerock Algonquin Smooth SA16-178, 12"x24", 8mm thickness.


1.2 NOTES

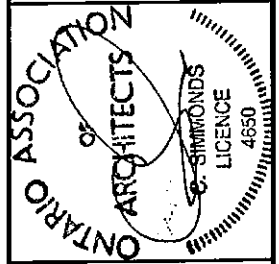
- All exposed edges of CT to be finished with Aluminum edge trim in accordance with Section 09 30 05.
- All CT base joints to match floor tile and to be aligned with floor tile joints.

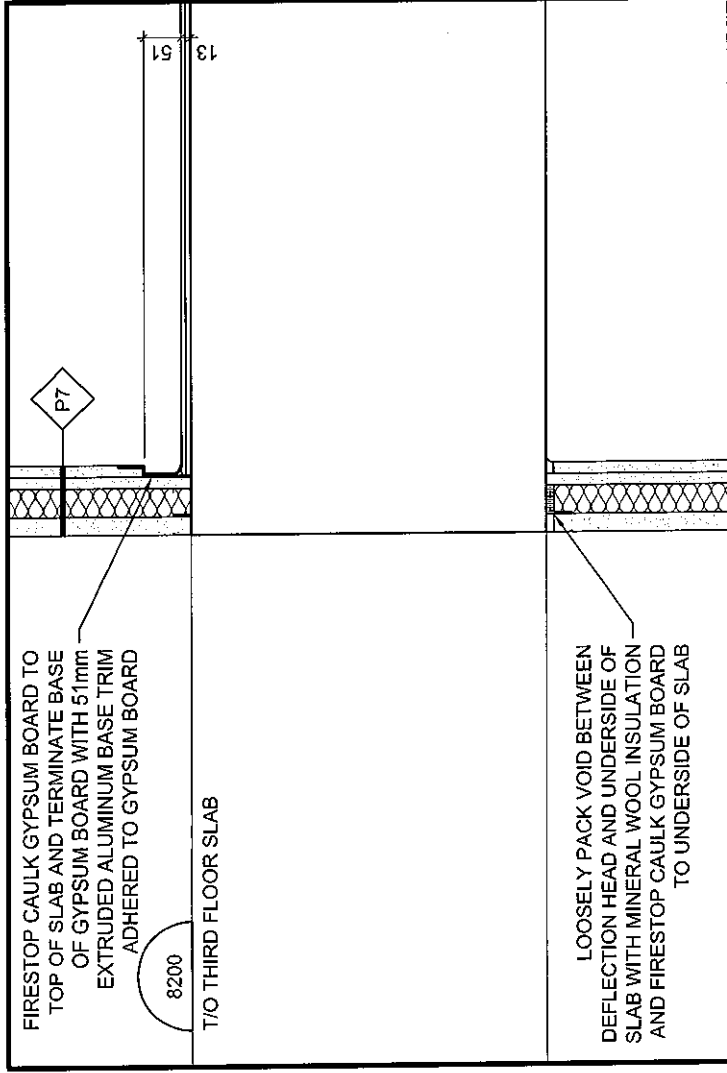
END OF SECTION



11 SMALL POD SHEAR WALL / HVAC SHAFT DETAIL
A503
SCALE = 1:10

DATE: 2017/01/23	PROJECT: TOMLINSON NEW BUILDING		 <p>CHRISTOPHER SIMMONDS ARCHITECT</p>
SCALE: AS INDICATED	DRAWING TITLE: REFERENCE DETAIL AS INDICATED		<p>TIRANNIA / RECUEILS D'OTTAWA ON K1R 6A5 913.587.7848 PHONE / 913.587.7528 FAX csmarchitect.com</p>
DRAWN BY: JK	DRAWING No: ASK-66		
JOB No: 574-15			
DRAWING No: ASK-66			





FIRESTOP CAULK GYPSUM BOARD TO TOP OF SLAB AND TERMINATE BASE OF GYPSUM BOARD WITH 51mm EXTRUDED ALUMINUM BASE TRIM ADHERED TO GYPSUM BOARD

8200

T/O THIRD FLOOR SLAB

51

P7

LOOSELY PACK VOID BETWEEN DEFLECTION HEAD AND UNDERSIDE OF SLAB WITH MINERAL WOOL INSULATION AND FIRESTOP CAULK GYPSUM BOARD TO UNDERSIDE OF SLAB

15 SHAFT WALL BASE AND HEAD DETAIL

SCALE = 1:10

15

A603

PROJECT:

TOMLINSON NEW BUILDING

DATE: 2017/01/23

SCALE: AS INDICATED

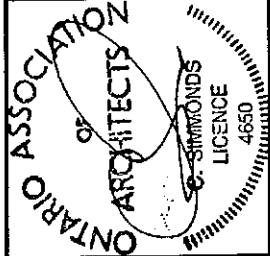
DRAWN BY: JK

JOB No: 574-15

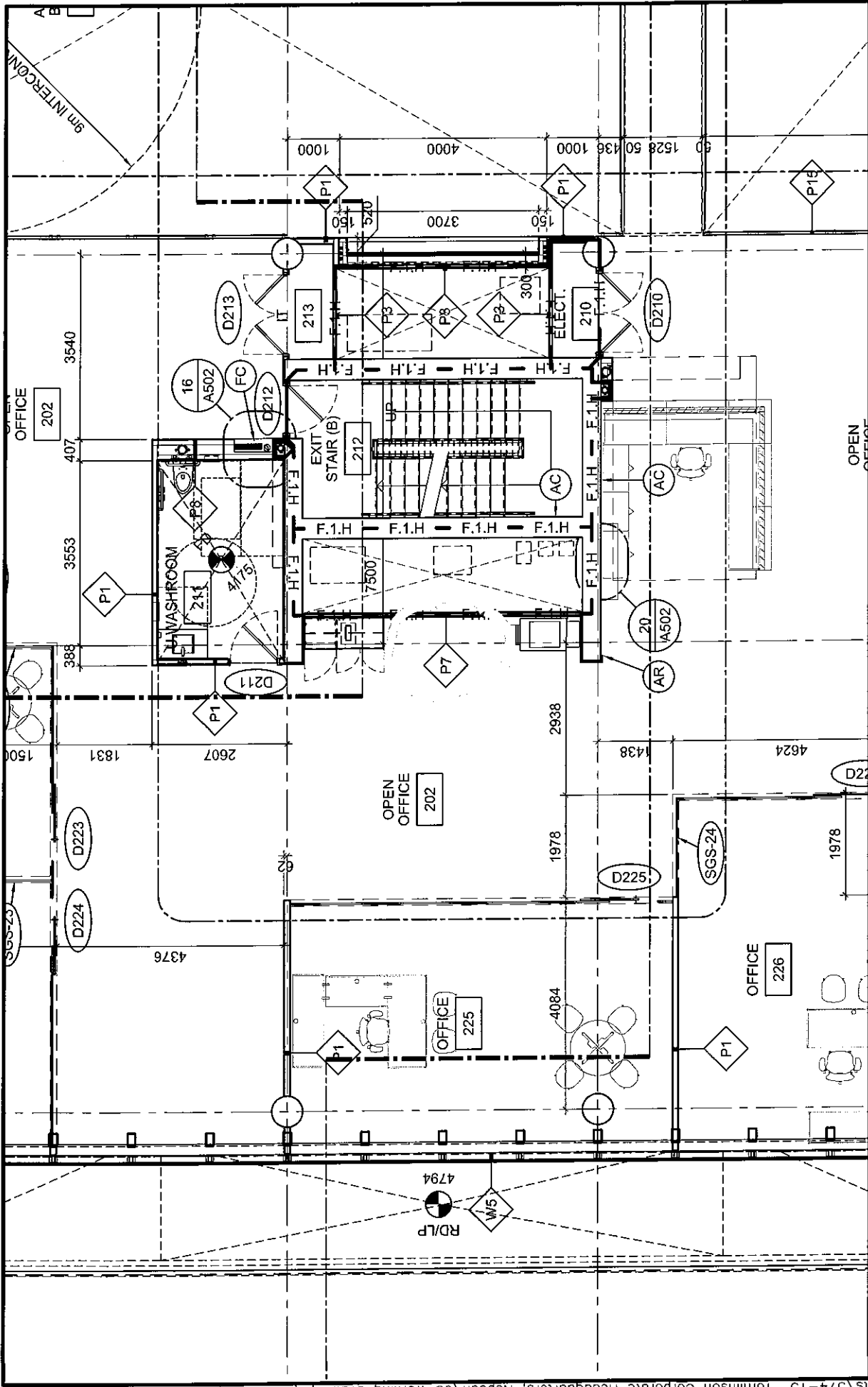
DRAWING No:

ASK-67

DRAWING TITLE:
REFERENCE NEW DETAIL AS INDICATED

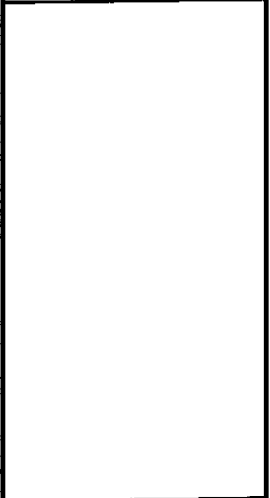


CHRISTOPHER SIMMONDS ARCHITECT
 431-447-7888 PHONE / 431-562-7528 FAX
 csa@csa.com

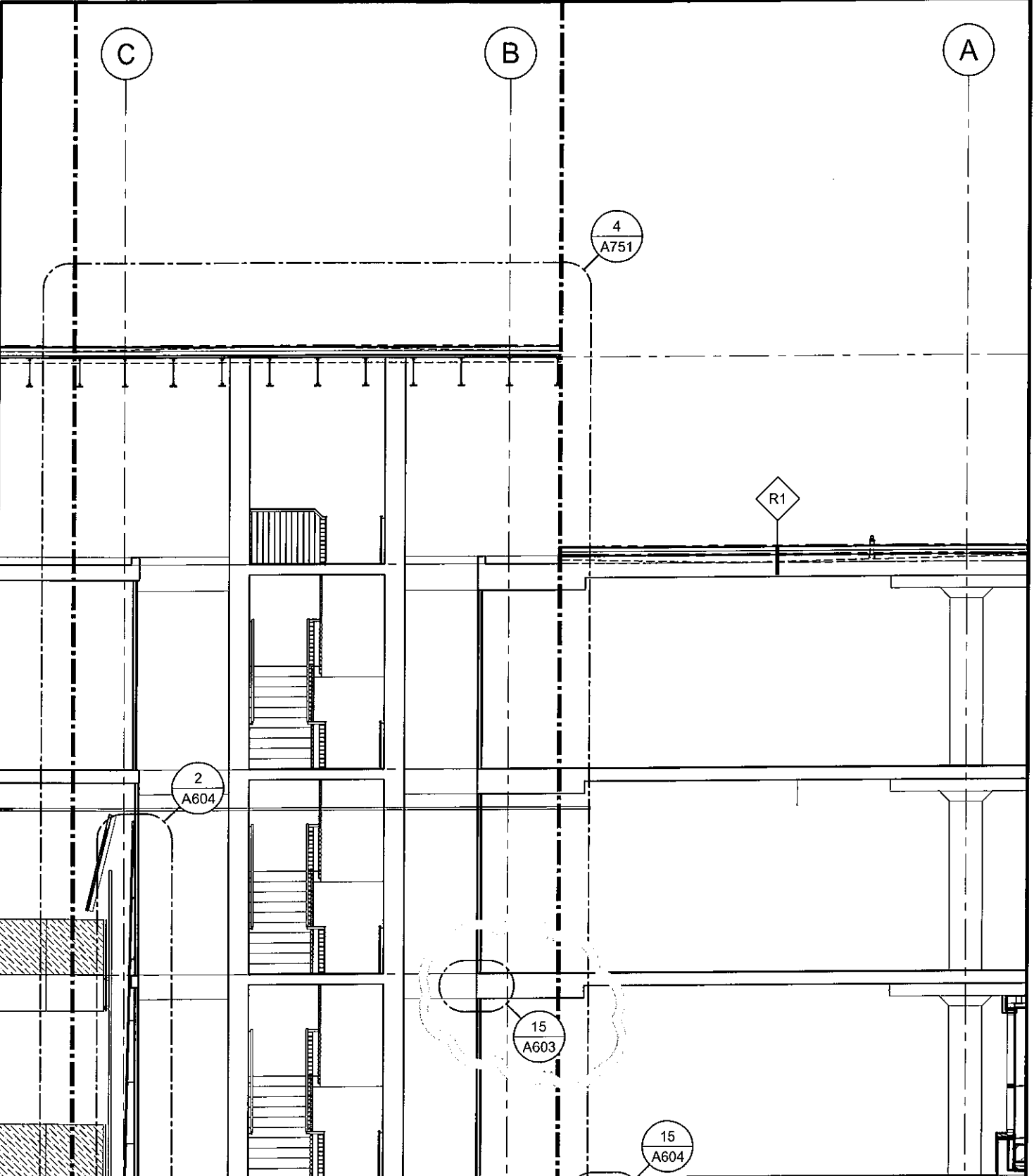


DATE: 2017/01/23
 SCALE: 1:100
 DRAWN BY: JK
 JOB No: 574-15
 DRAWING No: ASK-68

PROJECT:
 TOMLINSON NEW BUILDING
 DRAWING TITLE:
 REFERENCE PARTIAL PLAN 1/A102



Christopher Simmonds Architect
 913-247-7288 PHONK 7-633-257-3228 FAX
 www.csimmonds.com
 TILKANNEX/ARCELLE/ST-OTTAWA/ON/N1K4B1



Christopher Simmonds
Architect

THE ANNEX/4600 LESLIE ST. OTTAWA ON K1R 6S9
613.567.7558 PHONE / 613.567.7528 FAX
csarchitect.com

ONTARIO ASSOCIATION OF ARCHITECTS

C. SIMMONDS
LICENCE
4650

PROJECT:
TOMLINSON NEW BUILDING

DRAWING TITLE:
REFERENCE PARTIAL SECTION 1/A302

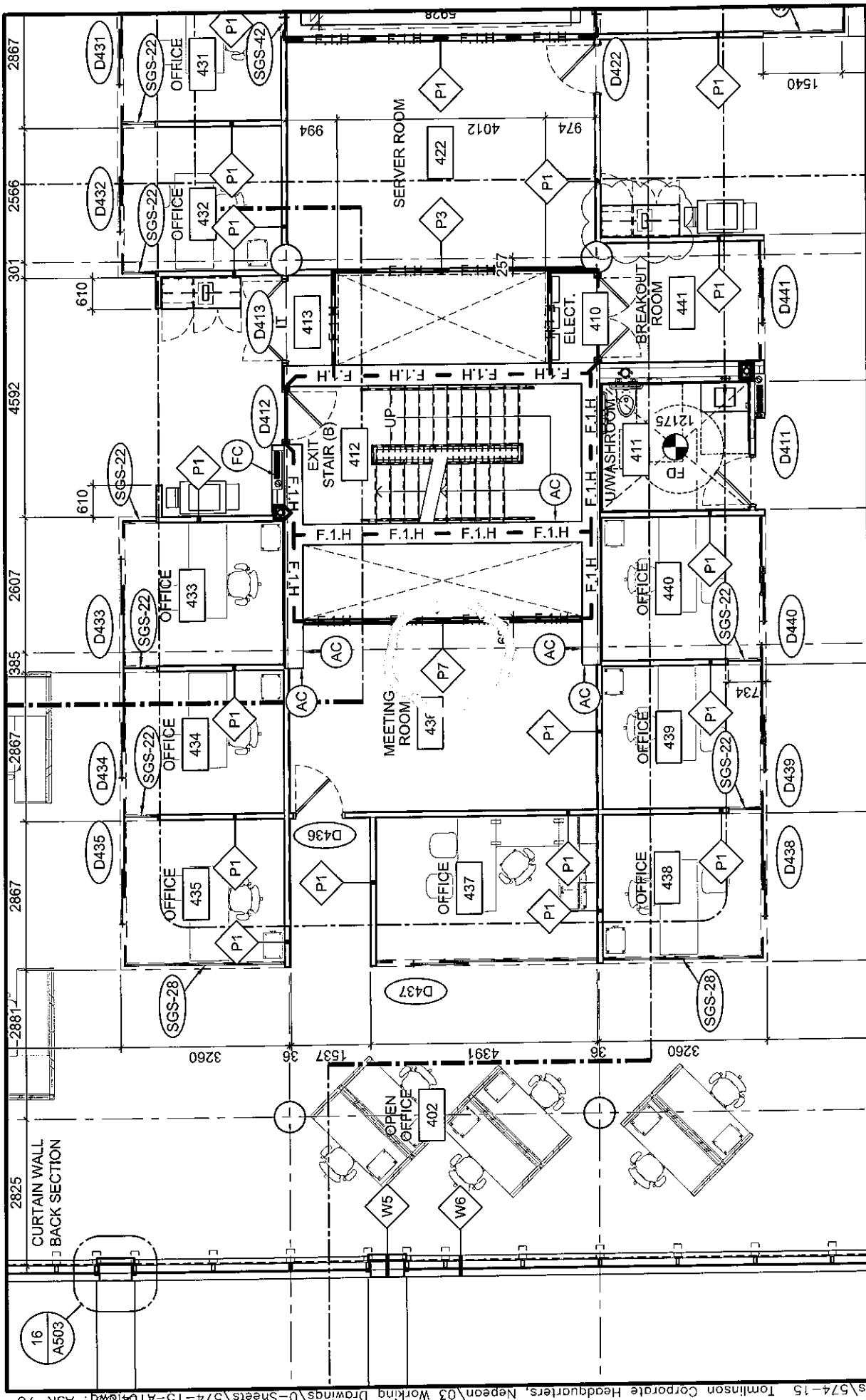
DATE: 2017/01/23

SCALE: 1:100

DRAWN BY: JK

JOB No: 574-15

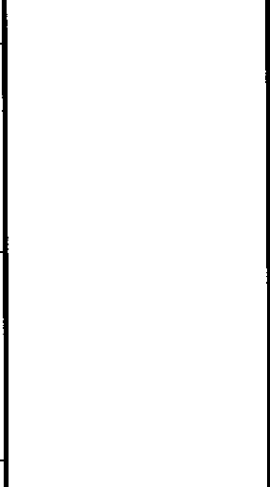
DRAWING No:
ASK-69



DATE:	2017/01/23
SCALE:	1:100
DRAWN BY:	JK
JOB No.:	574-15
DRAWING No.:	ASK-70

PROJECT: TOMLINSON NEW BUILDING

DRAWING TITLE: REFERENCE PARTIAL PLAN 1/A104



Christopher Simmons Architect

TIRANAKU / 45 CECILE ST. OTTAWA, ON K1R 4S7
 613.567.7888 PHONE / 613.567.7128 FAX
 csa@simsonet.com



TOMLINSON NEW HEAD OFFICE
 100 CITYGATE DRIVE
 OTTAWA, ONTARIO

Date: 29 November, 2016
 Rev. #: N/A
 Rev. Date: N/A

TENDER SUBMISSION - BID BREAKDOWN

APPENDIX A - BID BREAKDOWN (DRYWALL) REVISED

<u>Description</u>	<u>Dollar Value</u>
<u>Main Building:</u>	
Framing	\$ _____
Board and Tape	\$ _____
Ceilings	\$ _____
Acoustic Ceiling Panels (as per plans).	\$ _____
<u>Test Facility and Link Structure:</u>	
Framing	\$ _____
Board and Tape	\$ _____
Aluminum Trim @ Wood Door Frames (As compared to "J" trim finish @ reveal)	\$ _____
Aluminum Base Trim @ Exterior Walls (As compared to drywall to floor, base board by others)	\$ _____
Aluminum Base Trim @ Interior Walls (As compared to drywall to floor, base board by others)	\$ _____
<u>Total Bid Value</u>	\$ _____

Separate Prices Not Included In Base Bid:

A. Premium to install acoustic ceiling panels in atrium as per "TBIL Tender Sketch 9" ***
 Price = _____ +HST

B. Unit Rate/ linear foot to supply and install 300mm flat stock galvanized backing
 16 gauge = _____, 18 gauge = _____, 20 gauge = _____

**** Maximum Length of Unsupported Light Gauge Header @ Glass Partitions = _____ m

**** Potential cost savings to substitute metal ceiling tiles with conventional tiles = \$ _____

Manufacturer and model of proposed alternate ceiling tile is _____