



TAL-CO SUPPLEMENTAL INSTRUCTION #29			
Project Name:	RW TOMLINSON - NEW HEAD OFFICE		
Project Location:	100 City Gate Drive, Ottawa, Ontario		
ARCH. SI #:	N/A	Issued By:	Chris Simpson
STRUC. SI #:	SSI #14, SSI #16	Date Issued:	February 16, 2016
MECH. SI #:	N/A	Revision #:	N/A
ELEC. SI #:	N/A	Revision Date:	N/A

Supplemental Instructions are issued by the Construction Manager to record a clarification or revision to the previously issued Contact Documentation as reflected by the attached information prepared by the identified Professionals.

The Construction Manager shall review the Supplemental Instruction and the attached information and issue to the affected Trade Contractors identifying the following course of action by the Trade Contractor.

Notify TAL-CO within 5 days of receipt, if the attached documents will require a change to Contract Price or Schedule.

Title: Revisions to curtain wall/ soffit support steel at U.S. of 3rd floor slab.

Reference: Structural Drawing Set

Attachments:

- SSI #14
- SSI #16

Description of the Work: Structural Site instructions to confirm the relocation of cast-in weld plates at the underside of the 3rd floor slab. Contractor to site measure to verify and adjust for exact locations of cast-in plates. Aside from relocation of cast-in connection points, all steel is to remain as per original design. Co-ordinate with architectural for required finished dimensions to support panels and curtain wall.

Reason: A number of cast-in plates were relocated during construction due to interference with structure and other cast-in items. Structural engineer has confirmed that revised locations as shown are acceptable, contractor to make adjustments as necessary to accommodate.

STRUCTURAL SITE INSTRUCTION



Cleland Jardine Engineering Ltd., 580 Terry Fox Drive, Suite 200, Kanata, Ontario, K2L 4B9, FAX (613) 591-1703, Tel. (613) 591-1533

TO: TALCO Building Innovations DATE: November 17, 2016

ATTENTION: Chris Simpson EMAIL: csimpson@tal-co.com

PROJECT: Tomlinson – New Building PROJECT No.: 15-0179

ISSUED BY: Brian Johnson, P.Eng BDS PAGES (Incl this one): 2

STRUCTURAL SITE INSTRUCTION No.: 014

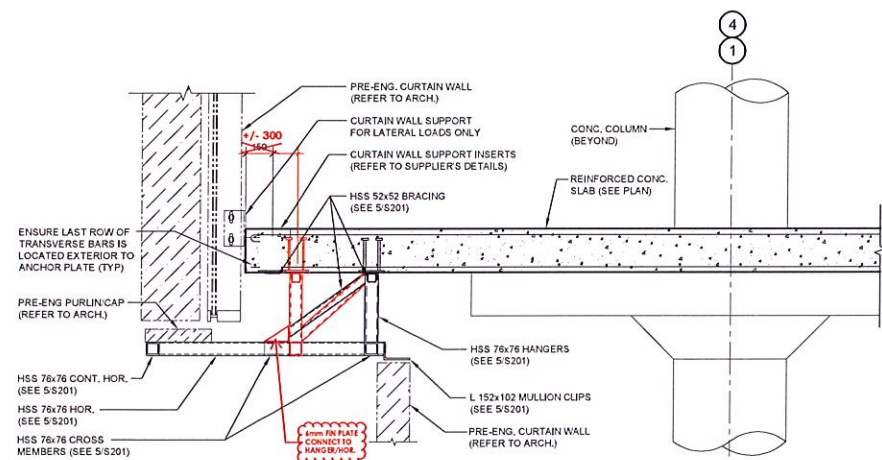
Affected Drawings: S200

References:

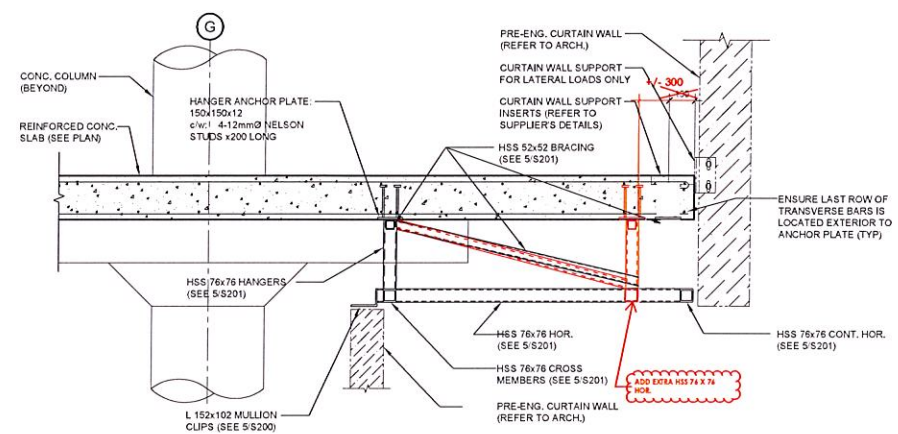
Supports for curtain wall mullions noted on architectural drawing A603 and interference issues with soffit hangers shown on structural drawings.

Information to be Clarified:

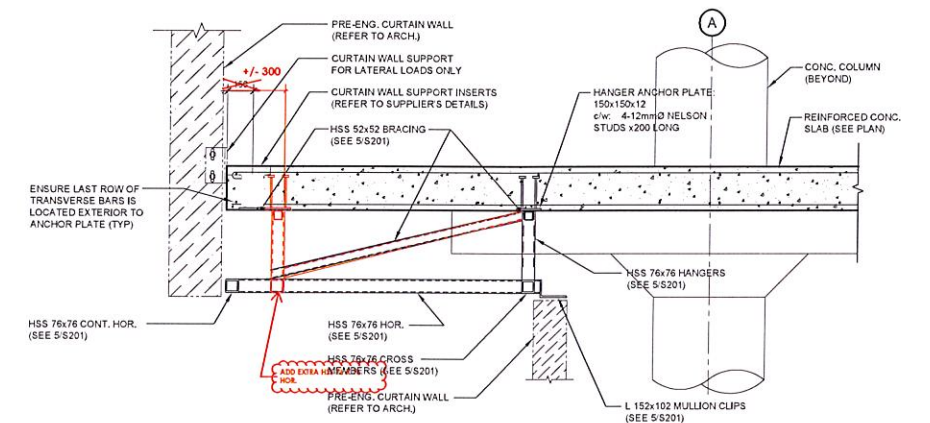
Contractor is to make the adjustments to the soffit supports noted in the attached sketches to avoid the interferences with the curtain wall anchors. See attached sketch SSI-S14-SK1.



8 SECTION: 3rd FLOOR: CURTAIN WALL SUPPORT
S200 SCALE 1:20

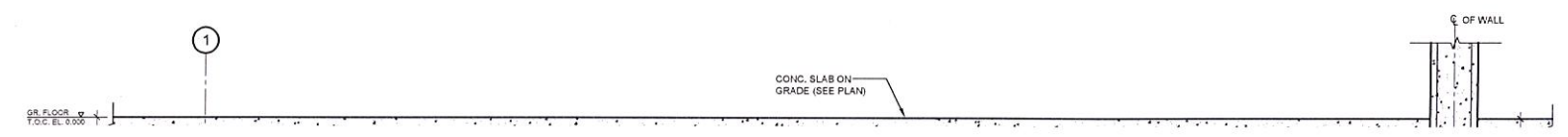


7 SECTION: 3rd FLOOR: CURTAIN WALL SUPPORT
S200 SCALE 1:20



6 SECTION: 3rd FLOOR: CURTAIN WALL SUPPORT
S200 SCALE 1:20

SSI-S14-SK1



STRUCTURAL SITE INSTRUCTION



Cleland Jardine Engineering Ltd., 580 Terry Fox Drive, Suite 200, Kanata, Ontario, K2L 4B9, FAX (613) 591-1703, Tel. (613) 591-1533

TO: TALCO Building Innovations DATE: Feb 15, 2017
ATTENTION: Chris Simpson EMAIL: csimpson@tal-co.com
PROJECT: Tomlinson – New Building PROJECT No.: 15-0179
ISSUED BY: Nas Torabi PAGES (Incl this one): 2
STRUCTURAL SITE INSTRUCTION No.: 016

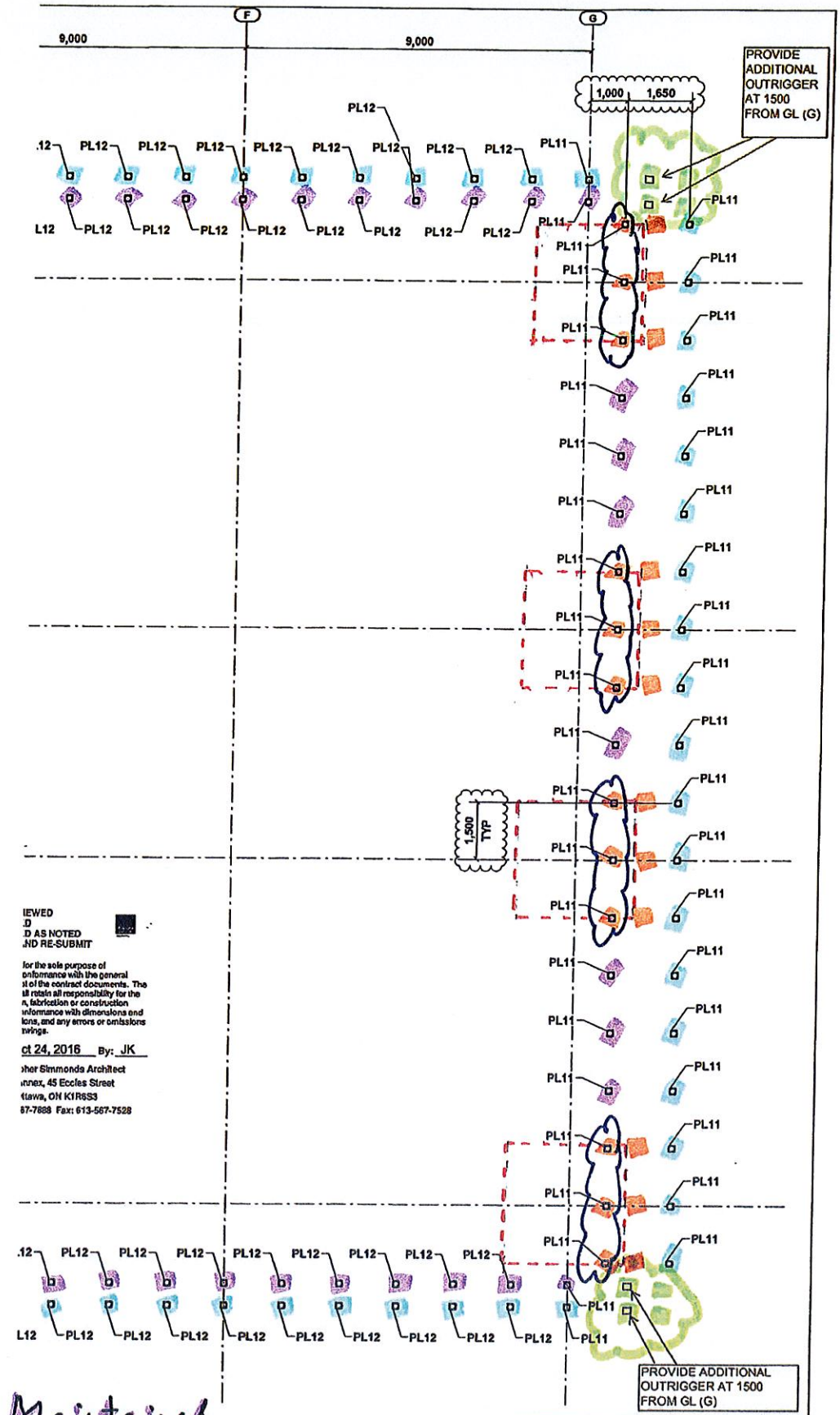
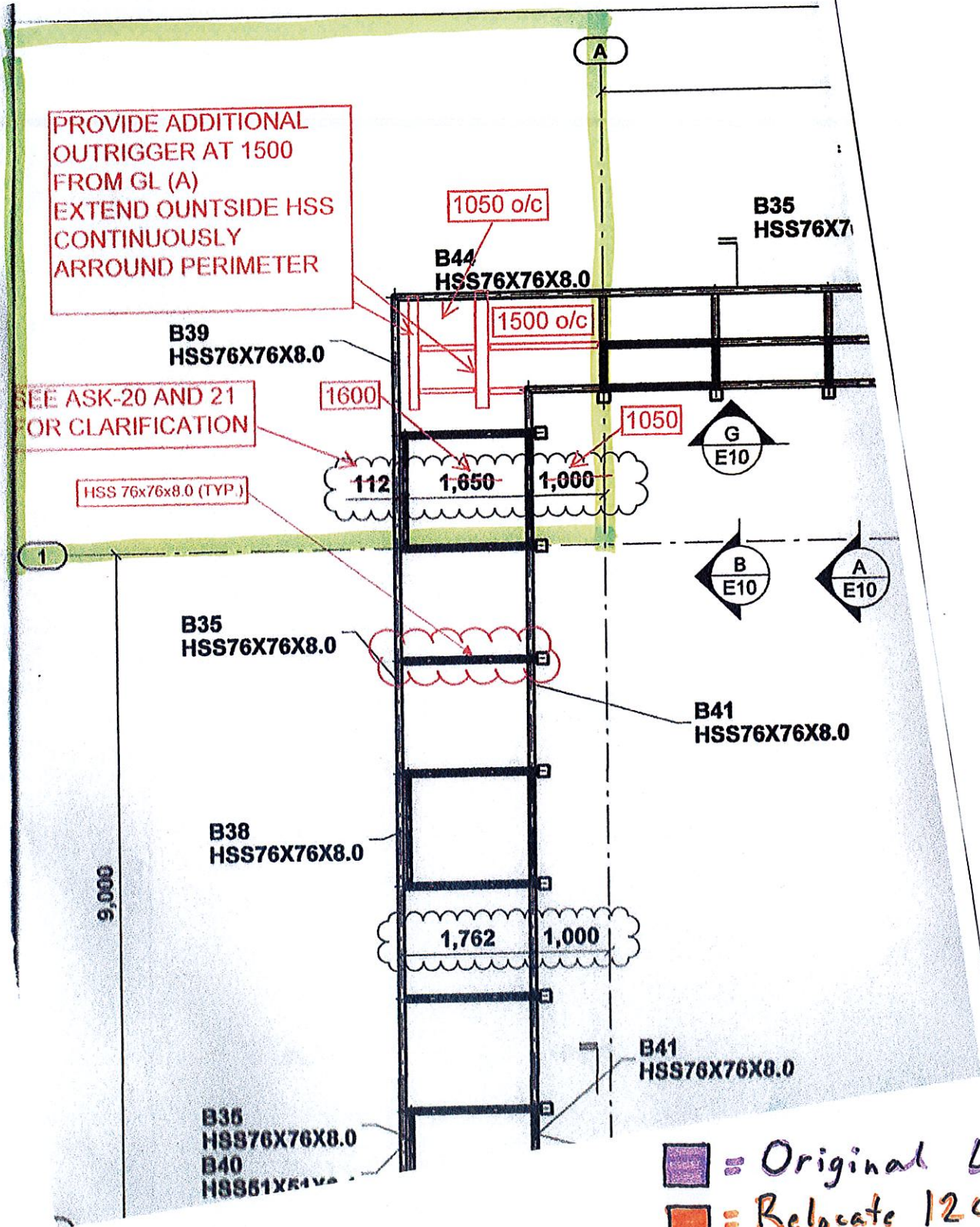
Affected Drawings: Sections 6,7 and 8 on S200

References: As-built locations of hanger anchor plates to resolve interference issues on site.

Information to be clarified:

Fabricator to coordinate with general contractor for exact off-set dimensions of cast-in anchor plates for curtain wall supports at third floor and site confirm prior to fabrication.

Please refer to attached sketch for revised locations.



REVIEWED
 AS NOTED
 AND RE-SUBMIT

for the sole purpose of
 compliance with the general
 notes of the contract documents. The
 architect retains all responsibility for the
 design, fabrication or construction
 information with dimensions and
 notes, and any errors or omissions
 herein.

04/24/2016 By: JK
 Jher Simmonds Architect
 4045 Eccles Street
 Kitchener, ON N3B 3S3
 517-7888 Fax: 513-567-7528

- = Original Location Maintained
 - = Relocate 1200 mm from Slab Edge
 - = Relocate 300 mm from Slab Edge
 - = Add as noted above.
- Responsible for the Design of
 Steel to Steel Connections only

REVISION	ISSUED FOR APPROVAL DESCRIPTION	DATE
A		10/08/2016

Cortek
 5738 WARNER DRIVE
 LONG SAULT, ONTARIO
 (513) 932-0511
 (513) 930-9125

Detailed by:
 VIS Design Inc.
 18 Dushin St. Suite 200
 Niagara, ON N2E 8S7
 Tel: (913) 723-2847
 Fax: (913) 723-0516

PROJECT NAME: Tomlinson New Building
 CONTRACTOR: TAL-CO

