



TAL-CO SUPPLEMENTAL INSTRUCTION #37			
Project Name:	RW TOMLINSON - NEW HEAD OFFICE		
Project Location:	100 CitiGate Drive, Ottawa, Ontario		
ARCH. SI #:	ASK 109 - ASK 113	Issued By:	Farah Bano
STRUC. SI #:	N/A	Date Issued:	March 15, 2017
MECH. SI #:	N/A	Revision #:	N/A
ELEC. SI #:	N/A	Revision Date:	N/A

Supplemental Instructions are issued by the Construction Manager to record a clarification or revision to the previously issued Contact Documentation as reflected by the attached information prepared by the identified Professionals.  
The Construction Manager shall review the Supplemental Instruction and the attached information and issue to the affected Trade Contractors identifying the following course of action by the Trade Contractor.

Notify TAL-CO within 5 days of receipt, if the attached documents will require a change to Contract Price or Schedule.

**Title:** Floor 4 Layout Revision

**Reference:**

Architectural - Construction Update 02-Feb-17

**Attachments:**

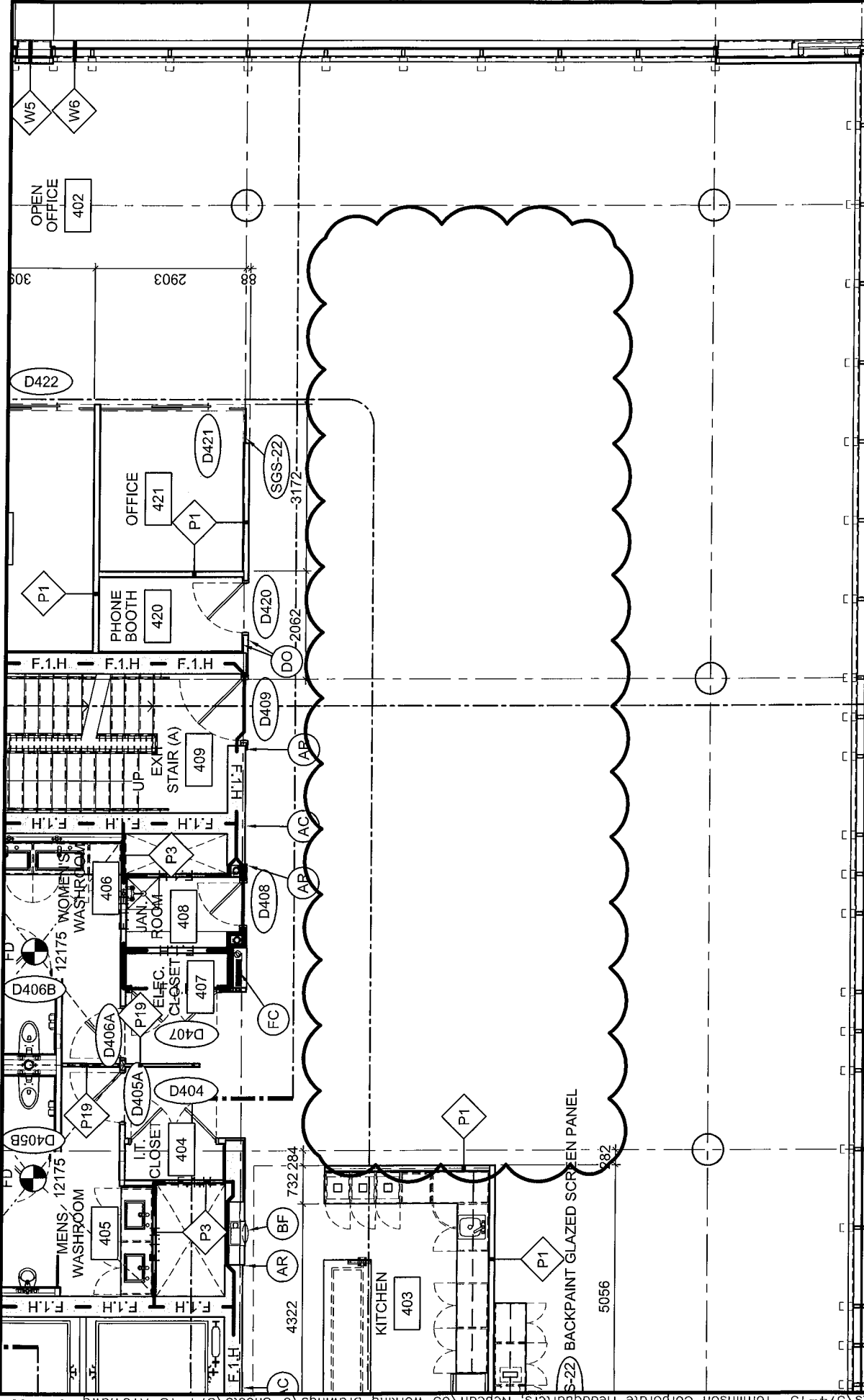
- ASK - 109
- ASK - 110
- ASK - 111
- ASK - 112
- ASK - 113

**Description of the Work:**

Clarification provided for floor 4 revisions - Sketches show revised plans & details.

**Reason:**

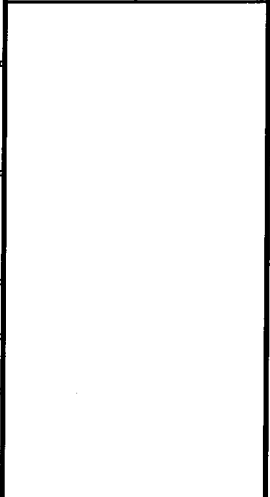
Clarification provided for floor 4 revisions - Sketches show revised plans & details.



DATE:	2017/03/09
SCALE:	1:100
DRAWN BY:	JK
JOB No:	574-15
DRAWING No:	ASK-109

PROJECT:  
**TOMLINSON NEW BUILDING**

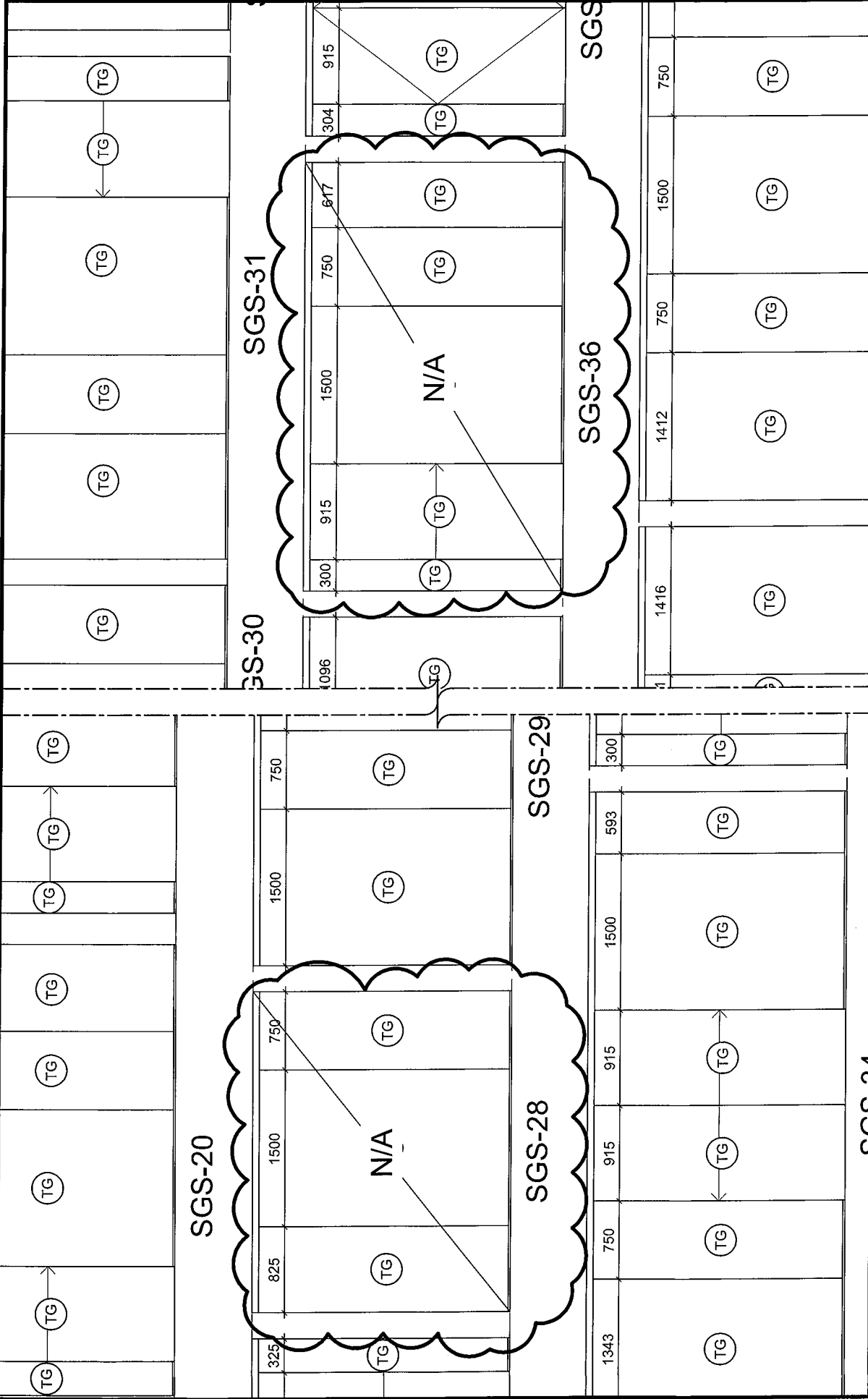
DRAWING TITLE:  
**REFERENCE PARTIAL PLAN 1/A104**


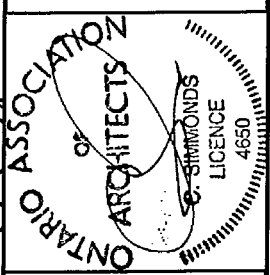


**Christopher Simmonds Architect**

THE ANNEX / RECECLES ST. OTTAWA ON R1R 6S3  
 613.567.7888 PHONE / 613.567.7528 FAX  
 csaarchitect.com





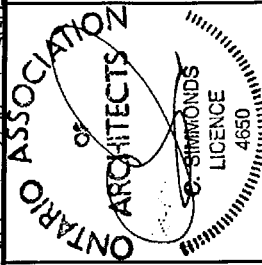
 <p>Christopher Simmonds Architect</p> <p>THE ANNEX / 410 COLLEGE ST. OTTAWA, ON K1R 6S3 613.567.7888 / PHONE / 613.567.7258 FAX csarchitect.com</p>	 <p>ONTARIO ASSOCIATION OF ARCHITECTS S. SIMMONDS LICENCE 4650</p>	<p>PROJECT: TOMLINSON NEW BUILDING</p>	<p>DATE: 2017/03/09</p>
		<p>DRAWING TITLE: REFERENCE PARTIAL DETAIL 8/A901</p>	<p>SCALE: 1:50</p>
		<p>DRAWN BY: JK</p>	<p>JOB No: 574-15</p>
		<p>DRAWING No: <b>ASK-111</b></p>	

FOURTH FLOOR

D401A	1220	2440	SCD-1	3/4HR	WDF-1	3/4HR	11/A002
D401B	1220	2440	SCD-1	3/4HR	WDF-1	3/4HR	11/A002
D404	2X813	2440	SCD-1	N/A	WDF-1	N/A	9/A002
D405A	950	2440	SCD-1	N/A	WDF-1	N/A	9/A002
D405B	813	2440	SCD-1	N/A	WDF-1	N/A	9/A002
D405C	813	2440	SCD-1	N/A	WDF-1	N/A	9/A002
D406A	950	2440	SCD-1	N/A	WDF-1	N/A	9/A002
D406B	813	2440	SCD-1	N/A	WDF-1	N/A	9/A002
D406C	813	2440	SCD-1	N/A	WDF-1	N/A	9/A002
D407	2X813	2440	SCD-1	3/4HR	WDF-1	3/4HR	11/A002
D408	813	2440	SCD-1	3/4HR	WDF-1	3/4HR	11/A002
D409	1169	2440	SCD-2	3/4HR	WDF-1	3/4HR	11/A002
D410	2X762	2440	SCD-1	3/4HR	WDF-1	3/4HR	11/A002
D411	950	2440	SCD-1	N/A	WDF-1	N/A	9/A002
D412	915	2440	SCD-2	3/4HR	WDF-1	3/4HR	11/A002
D413	2X762	2440	SCD-1	N/A	WDF-1	N/A	9/A002
D414	RESERVED						
D415	RESERVED						
D416	RESERVED						
D417	RESERVED						
D418	RESERVED						
D419	RESERVED						
D420	950	2440	SCD-1	N/A	WDF-1	N/A	9/A002
D421	915	2750	SGD-1	N/A	SGS-27	N/A	N/A
D422	950	2750	SGD-1	N/A	SGS-35	N/A	N/A
D423	915	2750	SGD-1	N/A	SGS-47	N/A	N/A
D424	915	2750	SGD-1	N/A	SGS-48	N/A	N/A
D425	915	2750	SGD-1	N/A	SGS-7	N/A	N/A
D426	915	2750	SGD-1	N/A	SGS-7	N/A	N/A
D427	915	2750	SGD-1	N/A	SGS-7	N/A	N/A
D428	915	2750	SGD-1	N/A	SGS-13	N/A	N/A
D429	915	2750	SGD-1	N/A	SGS-1	N/A	N/A
D430	915	2750	SGD-1	N/A	SGS-7	N/A	N/A

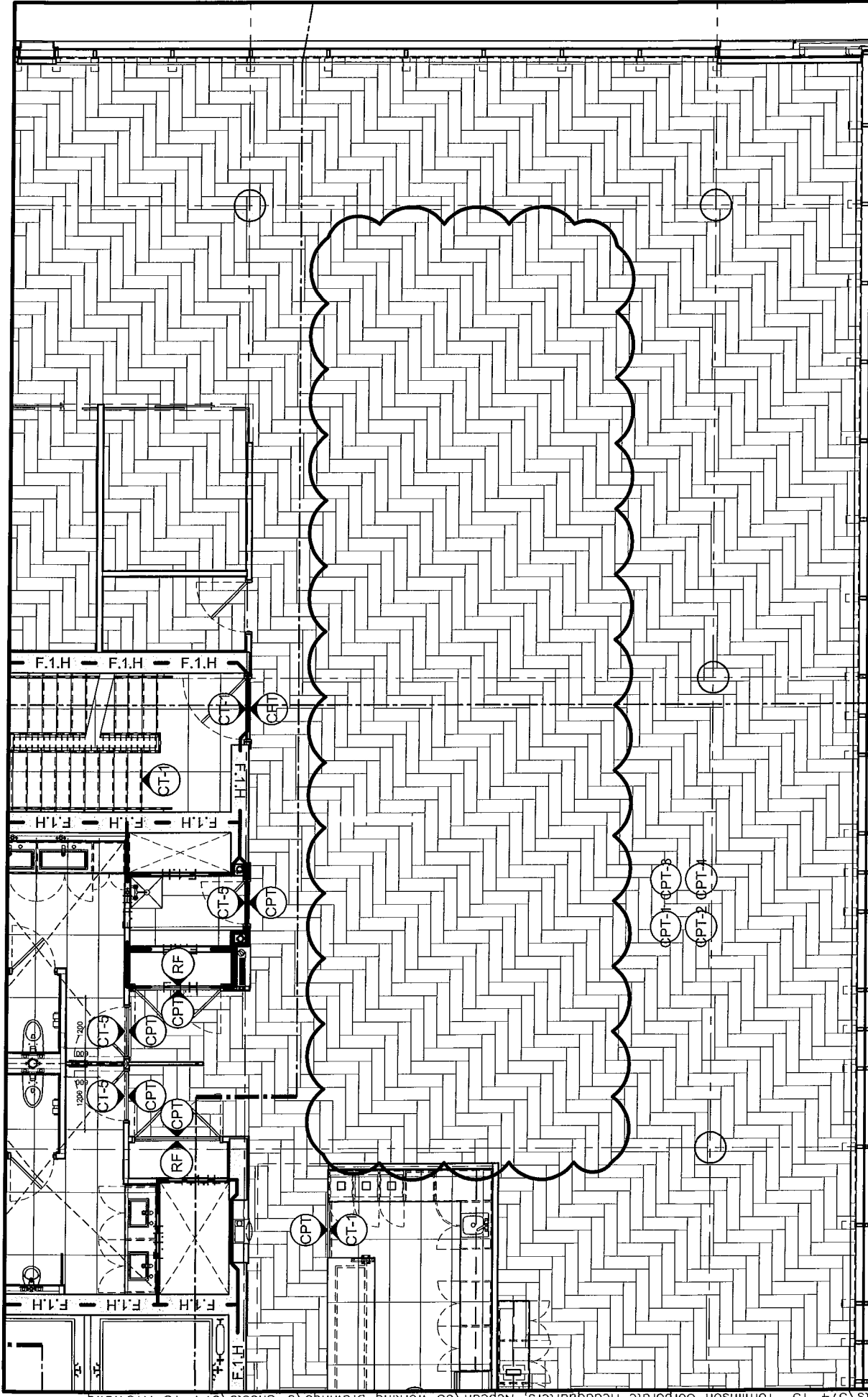
PROJECT: TOMLINSON NEW BUILDING  
 DRAWING TITLE: REFERENCE PARTIAL DETAIL 5/A901

DATE: 2017/03/13  
 SCALE: N/A  
 DRAWN BY: JK  
 JOB No: 574-15  
 DRAWING No: ASK-112



**Christopher Simmonds Architect**

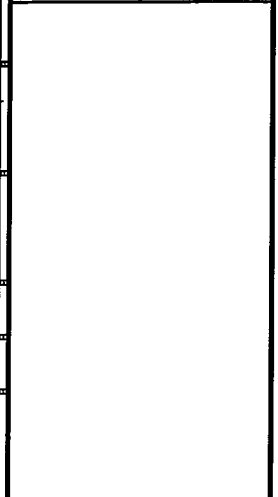
THIRDMANOR/HECULES ST. OTTAWA, ON N6R 5S3  
 413.567.7888 PHONE / 613.567.7328 FAX  
 csaarchitect.com



DATE:	2017/03/09
SCALE:	1:100
DRAWN BY:	JK
JOB NO.:	574-15
DRAWING NO.:	ASK-113

PROJECT:  
**TOMLINSON NEW BUILDING**

DRAWING TITLE:  
**REF. PART. FLOOR FINISH PLAN 1/A134**



**Christopher  
Simmonds  
Architect**

THE ARCADE / RECULUS ST. OTTAWA, ON K1K 6K3  
 613.567.7888 PHONE / 613.567.7524 FAX  
 csaarchitect.com