



R.W. TOMLINSON - NEW HEAD OFFICE

TAL-CO Building Innovations
1341-2 Coker Street
Greely, Ontario K4P 1A1
Tel: 613-821-3959
Fax: 613-821-2938

Issue date: 16-Mar-17
Rev date: 16-Mar-17
Rev #: 01

CLARIFICATION #2 Rev 01 – Lot 3E

The following modifications and clarifications are to be accounted for on this project. As well, when entering into the Form of Agreement to do the work, they shall become a part thereof.

Instruction/Clarifications:

Please be advised that Clarification #2 Rev 01 - Lot 3E has been issued for the above-mentioned project.

- Provide Install only price for owner supplied glass panels for the water wall feature as per revised **Bid Breakdown Appendix A Rev02** attached.
- Replace Carpet Tiles **CPT1, CPT2, CPT3 & CPT4** listed on Room Finish Schedule with “Field Color Patina – Milliken”.
CPT5 – “On Line, 105266 Aquamarine, Interface (25cm x 100cm)” stays as labelled on Room Finish Schedule
- For Revised Finish & Elevation details, see attached Room Finish Schedule Rev 05 and corresponding Sketches (**ASK-119 Rev 01**) & (A701 & A702).

Reminder: It is your responsibility to consult ALL documents, drawings, sketches, Clarifications, Addenda, and Supplemental Instructions.

For questions or further information, please contact the office by e-mail at info@tal-co.com.

End of Clarification No. 2 Rev 01 – Lot 3E



TOMLINSON NEW HEAD OFFICE
 100 CITYGATE DRIVE
 OTTAWA, ONTARIO

Date: 22 Feb, 2017
 Rev. #: 2
 Rev. Date: 16-Mar-17

TENDER SUBMISSION - BID BREAKDOWN

APPENDIX A Rev 02 - BID BREAKDOWN (FLOORING)

<u>Description</u>	<u>Dollar Value</u>
Base Bid:	
Install Only All Floor and Wall Tile - Including Foot Grills	
Supply/Install Carpet Tile	
Install Only Carpet Tile	
Supply/ Install All Resilient Flooring With Base	
Supply/ Install All Hygienic Flooring and Wall Covering	
Supply/ Install Aluminum Base Molding As Per Plans	
Supply/ Install Ditra Mat Membrane for Gr. Flr. Tile	
(All accessories ie. Trims, transitions, mortar, grout, adhesives, etc. to be included in above pricing).	
Total Base Bid Value:	_____ + HST
Additional Items;	
(These items may not be included in contract)	
Supply Only All Floor and Wall Tile (*)	
Supply Only All Carpet Tile (*)	
(* Allow 3% extra material to be retained by owner).	
Supply Only Tile for Stair "C"	
Install Only Tile for Stair "C"	
(For Stair "C" Assume 12" x 24" format Tiles, plywood substrate on landings by others, see sketch for details of tread and riser installation).	
Install only Glass Panels for Water Wall Per ASK-89	
Total Bid (All Inclusive):	_____ + HST

Separate Prices Not Included Above:

- A. Unit rate for additional Patching/ Floor Leveling; _____ / bag (supply and install)
 (Provide name of proposed product/ weight of bag; _____)
- B. Hourly Rate For Tile Installers = _____ + HST
 Hourly Rate For Carpet Installers = _____ + HST
 Hourly Rate For Labourers = _____ + HST

NO	NAME	FLOOR		BASE		WALLS		CEILING		REMARKS
		MAT	FIN	MAT	FIN	MAT	FIN	MAT	FIN	

GROUND FLOOR

100	ATRIUM	CT1 ST	-	-	-	CONC GYP CG AT1	EXP P	CONC AT1	CONC AT1	CPT1 bridge flooring, concrete wall finish – board form vertical, water wall coloured glass, acoustic panels in front of water wall. BR base only at GYP walls. No Base at glass and concrete partitions.
101	EAST VESTIBULE	CT1	-	-	-	CONC	EXP	CONC	EXP	
102	WEST VESTIBULE	CT1	-	-	-	CONC	EXP	CONC	EXP	
103	ELEVATOR LOBBY	CT1	-	BR MB	-	GYP	P1	CONC	EXP	BR base at GYP partitions, MB base at exposed concrete walls
104	IT CLOSET	CT1	-	CT	-	CONC GYP	EXP P1	CONC	EXP	
105	MEN'S WASHROOM	CT5	-	CT	-	CONC GYP CT6 CT8		ACT1	-	CT base to match floor tile (also align joints). Refer to interior elevations for locations
106	WOMEN'S WASHROOM	CT5	-	CT	-	CONC GYP CT6 CT8		ACT1	-	CT base to match floor tile (also align joints). Refer to interior elevations for locations
107	UNIVERSAL WASHROOM	CT5	-	CT	-	GYP CT	P1 CT4 CT6	ACT1	-	CT base to match floor tile (also align joints) Refer to interior elevations for locations
108	JANITOR'S ROOM	CT1	-	CT	-	CONC GYP	EXP P1	GYP	-	
109	EXIT STAIR A	CONC	EXP	-	-	CONC	EXP	CONC	EXP P2	
110	ELECTRICAL/IT CLOSET	CT1	-	CT	-	CONC GYP	EXP P1	CONC	EXP P1	

NO	NAME	FLOOR		BASE		WALLS		CEILING		REMARKS
		MAT	FIN	MAT	FIN	MAT	FIN	MAT	FIN	
111	MAIL ROOM	CT1	-	BR	-	GYP	P1	GYP	P1	
112	EXIT STAIR B	CONC	Ext	-	-	CONC	EXP	CONC	EXP P2	
113	COAT CLOSET	CT1	-	BR	-	CONC GYP	EXP	CONC	EXP P1	
114	CAFETERIA	CT1	-	BR MB	-	CONC GYP AT1 CT3	EXP P1 PL1	CONC AT1 AT2	EXP	BR base at GYP partitions, MB base at exposed concrete walls
115	KITCHEN	HF		RB	-	CONC GYP	HW	CONC	EXP	RB base-refer to specifications for Hygienic wall covering and hygienic floor covering
116	ELECTRICAL ROOM	CONC		RB	-	CONC GYP	EXP P1	CONC	EXP	Epoxy finish to concrete floor
117	HOLDING ROOM	RF		RB	-	GYP	P1	CONC	EXP	
117B	HOLDING ROOM VESTIBULE	RF		RB	-	GYP	P1	CONC	EXP	
118	EXIT CORRIDOR	CT1	-	MB	-	GYP CONC	EXP P1	GYP	P1	
119	LOADING VESTIBULE	CT1	-	MB	-	GYP	P1	CONC	EXP	
120	OPEN OFFICE	CPT 1,2,3,4	-	BR MB	-	GYP	P	CONC	EXP	BR base at GYP partitions, MB base at exposed concrete walls
121	BREAKOUT ROOM	CPT 1,2,3,4	-	BR	-	GYP	P	CONC	EXP	
122	OFFICE	CPT 1,2,3,4	-	BR	-	GYP	P	CONC	EXP	
123	OFFICE	CPT 1,2,3,4	-	BR	-	GYP	P	CONC	EXP	
124	WATER ENTRY ROOM	CONC	-	MB	-	GYP	P	CONC	EXP	Sealer to concrete floor
125	OFFICE	CPT	-	BR MB	-	GYP	P	CONC	EXP	BR base at GYP partitions, MB base at

NO	NAME	FLOOR		BASE		WALLS		CEILING		REMARKS
		MAT	FIN	MAT	FIN	MAT	FIN	MAT	FIN	
126	OFFICE	1,2,3,4 CPT 1,2,3,4	-	BR MB	-	GYP	P	CONC	EXP	exposed concrete walls BR base at GYP partitions, MB base at exposed concrete walls
127	UNUSED									
128A	TRAINING ROOM A	CT1	-	BR MB	-	CONC GYP	EXP P1	CONC GYP	EXP P1	GYP Bulkhead at Folding Partition. BR base at GYP partitions, MB base at exposed concrete walls
129A	TRAINING ROOM B	CT1	-	BR MB	-	CONC GYP	EXP P1	CONC GYP	EXP P1	GYP Bulkhead at Folding Partition. BR base at GYP partitions, MB base at exposed concrete walls
130	EXIT CORRIDOR B	CT1	-	MB	-	GYP	P1	GYP	P1	
131	TERRACE VESTIBULE	CT1	-	MB	-	GYP	P1	CONC	EXP	
132	GYM	CPT5	-	RB MB	-	CONC GYP	EXP P	CONC	EXP	P colour TBD. BR base at GYP partitions, MB base at exposed concrete walls
133	CLOAK ROOM	CT1	-	RB MB	-	CONC GYP	EXP P	CONC	EXP	P colour TBD. BR base at GYP partitions, MB base at exposed concrete walls
134	MEN'S VESTIBULE	CT5	-	CT	-	GYP	P1	GYP	P1	CT base to match floor tile (also align joints)
135	MEN'S WASHROOM	CT5	-	CT	-	GYP CT6	P1	GYP	P1	CT base to match floor tile (also align joints)
136	MEN'S CHANGEROOM	CT5	-	CT	-	GYP	P1	GYP	P1	CT base to match floor tile (also align joints)
137	WOMEN'S VESTIBULE	CT5	-	CT	-	CONC GYP	EXP P1	GYP	P1	CT base to match floor tile (also align joints)
138	WOMEN'S WASHROOM	CT5	-	CT	-	CONC GYP CT6	EXP P1	GYP	P1	CT base to match floor tile (also align joints)
139	WOMEN'S CHANGEROOM	CT5	-	CT	-	GYP CT6 CT7 CT8	P1	GYP	P1	CT base to match floor tile (also align joints)

NO	NAME	FLOOR		BASE		WALLS		CEILING		REMARKS
		MAT	FIN	MAT	FIN	MAT	FIN	MAT	FIN	
T06	UNIVERSAL WASHROOM	CH	-	CT-5	-	GYP CT	P1 CT4 CT6	ACT1	-	Align CT base joints with wall tile Refer to interior elevations for locations
SECOND FLOOR										
200	ATRIUM	CPT1 EP	EP P1	RB MB		CONC	EXP. / P1	-	-	Bridge -CPT 1, EP on Stair C/D risers and treads. P1 on GYP walls and remaining stair finishes
201	ELEVATOR LOBBY	CPT 1,2,3,4		BR		GYP	P1	CONC.	EXP.	
202	OPEN OFFICE	CPT 1,2,3,4		RB MB	-	GYP	P	CONC.	EXP.	BR base at GYP partitions, MB base at exposed concrete walls. P colours TBD
203	KITCHEN	CT1		BR MB		CONC GYP	EXP. / P1/ PL1	AT2		BR base at GYP partitions, MB base at exposed concrete walls. P colours TBD
204	IT CLOSET	RF	-	RB	-	GYP	P1	CONC.	EXP./P 1	
205	MEN'S WASHROOM	CT5	-	CT	-	CONC GYP CT6 CT8		ACT1	-	CT base to match floor tile (also align joints). Refer to interior elevations for locations
206	WOMEN'S WASHROOM	CT5	-	CT	-	CONC GYP CT6 CT8		ACT1	-	CT base to match floor tile (also align joints). Refer to interior elevations for locations

NO	NAME	FLOOR		BASE		WALLS		CEILING		REMARKS
		MAT	FIN	MAT	FIN	MAT	FIN	MAT	FIN	
207	ELECTRICAL CLOSET	RF	-	RB	-	GYP	P1	CONC.	EXP./P 1	
208	JANITOR'S ROOM	CT1	-	CT	-	CONC GYP	EXP. /P1	CONC.	EXP.	
209	EXIT STAIR A	CONC	EXP	-	-	CONC	EXP	CONC.	EXP P2	
210	ELECTRICAL CLOSET	RF	-	RB	-	CONC GYP	EXP. P1	CONC.	EXP P1	
211	UNIVERSAL WASHROOM	CT5		CT	-	GYP CT	P1 CT4 CT6	ACT1		CT base to match floor tile (also align joints)
212	EXIT STAIR B	CONC	EXP	-	-	CONC	EXP	CONC	EXP P2	
213	IT CLOSET	RF	-	RB	-	CONC GYP	EXP P1	CONC	EXP P1	
214	BREAKOUT ROOM	CPT 1,2,3,4		BR	-	GYP	P	CONC	EXP	
215	PHONE BOOTH	CPT 1,2,3,4		BR	-	GYP	P	CONC	EXP	
216	OFFICE	CPT 1,2,3,4		BR	-	GYP	P	CONC	EXP	
217	OFFICE	CPT 1,2,3,4		BR	-	GYP	P	CONC	EXP	
218	BREAKOUT ROOM	CPT 1,2,3,4		BR	-	GYP	P	CONC	EXP	P2 on North wall. All others P1
219	OFFICE	CPT 1,2,3,4		BR	-	GYP	P	CONC	EXP	
220	OFFICE	CPT 1,2,3,4		BR	-	GYP	P	CONC	EXP	P6 on North wall. All others P1
221	LARGE MEETING ROOM	CPT 3		BR	-	GYP	P	CONC	EXP	

NO	NAME	FLOOR		BASE		WALLS		CEILING		REMARKS
		MAT	FIN	MAT	FIN	MAT	FIN	MAT	FIN	
222	MEETING ROOM	CPT 1,2,3,4		BR	-	GYP	P	CONC	EXP	
223	OFFICE	CPT 1,2,3,4		BR	-	GYP	P	CONC	EXP	
224	OFFICE	CPT 1,2,3,4		BR	-	GYP	P	CONC	EXP	
225	OFFICE	CPT 1,2,3,4		BR	-	GYP	P	CONC	EXP	
226	OFFICE	CPT 1,2,3,4		BR	-	GYP	P	CONC	EXP	
227	OFFICE	CPT 1,2,3,4		BR	-	GYP	P	CONC	EXP	
THIRD FLOOR										
300	ATRIUM	CPT 1 EP	EP P1	BR MB		CONC GYP	EXP P1	-	-	Bridge -CPT 1, EP on Stair C/D risers and treads. P1 on GYP walls and remaining stair finishes
301	ELEVATOR LOBBY	CPT 1,2,3,4		BR		GYP	P1	CONC	EXP	
302	OPEN OFFICE	CPT 1,2,3,4		BR MB	-	GYP	P	CONC	EXP	BR base at GYP partitions, MB base at exposed concrete walls. P colours TBD
303	KITCHEN	CT1		BR MB		CONC GYP	EXP P1/ PL1	AT2		BR base at GYP partitions, MB base at exposed concrete walls. P colours TBD
304	IT CLOSET	RF		RB	-	GYP	P1	CONC	EXP P1	
305	MEN'S WASHROOM	CT5		CT	-	CONC GYP CT6 CT8		ACT1	-	CT base to match floor tile (also align joints). Refer to interior elevations for locations

NO	NAME	FLOOR		BASE		WALLS		CEILING		REMARKS
		MAT	FIN	MAT	FIN	MAT	FIN	MAT	FIN	
306	WOMEN'S WASHROOM	CT5	-	CT	-	CONC GYP CT6 CT8		ACT1	-	CT base to match floor tile (also align joints). Refer to interior elevations for locations
307	ELECTRICAL CLOSET	RF	-	RB	-	GYP P1		CONC	EXP P1	
308	JANITOR'S ROOM	CT1	-	CT	-	CONC GYP P1		CONC	EXP	
309	EXIT STAIR A	CONC	EXP	-	-	CONC		CONC	EXP P2	
310	ELECTRICAL CLOSET	RF	-	RB	-	CONC GYP P1		CONC	EXP P1	
311	UNIVERSAL WASHROOM	CT5		CT	-	GYP CT P1 CT4 CT6		ACT1		CT base to match floor tile (also align joints)
312	EXIT STAIR B	CONC	EXP	-	-	CONC		CONC	EXP P2	
313	IT CLOSET	RF	-	RB	-	CONC GYP P1		CONC	EXP P1	
314	OFFICE	CPT 1,2,3,4		BR	-	GYP P		CONC	EXP	
315	OFFICE	CPT 1,2,3,4		BR	-	GYP P		CONC	EXP	
316	PHONE BOOTH	CPT 1,2,3,4		BR	-	GYP P		CONC	EXP	P4 on West wall. All others P1
317	PHONE BOOTH	CPT 1,2,3,4		BR	-	GYP P		CONC	EXP	P4 on East wall. All others P1

NO	NAME	FLOOR		BASE		WALLS		CEILING		REMARKS
		MAT	FIN	MAT	FIN	MAT	FIN	MAT	FIN	
318	OFFICE	CPT 1,2,3,4		BR	-	GYP	P	CONC	EXP	
319	OFFICE	CPT 1,2,3,4		BR	-	GYP	P	CONC	EXP	
320	OFFICE	CPT 1,2,3,4		BR	-	GYP	P	CONC	EXP	
321	PHONE BOOTH	CPT 1,2,3,4		BR	-	GYP	P	CONC	EXP	P2 on West wall. All others P1
322	MEETING ROOM	CPT 1,2,3,4		BR	-	GYP	P	CONC	EXP	P4 on West wall. All others P1
323	OFFICE	CPT 1,2,3,4		BR	-	GYP	P	CONC	EXP	
324	OFFICE	CPT 1,2,3,4		BR	-	GYP	P	CONC	EXP	
325	OFFICE	CPT 1,2,3,4		BR	-	GYP	P	CONC	EXP	
326	OFFICE	CPT 1,2,3,4		BR	-	GYP	P	CONC	EXP	
327	OFFICE	CPT 1,2,3,4		BR	-	GYP	P	CONC	EXP	
328	OFFICE	CPT 1,2,3,4		BR	-	GYP	P	CONC	EXP	
329	MEETING ROOM	CPT 1,2,3,4		BR	-	GYP	P	CONC	EXP	P5 on South wall. All others P1
330	OFFICE	CPT 1,2,3,4		BR	-	GYP	P	CONC	EXP	
331	OFFICE	CPT 1,2,3,4		BR	-	GYP	P	CONC	EXP	

NO	NAME	FLOOR		BASE		WALLS		CEILING		REMARKS
		MAT	FIN	MAT	FIN	MAT	FIN	MAT	FIN	
FOURTH FLOOR										
400	OPEN (ATRIUM)	EP	EP P1	BR MB		CONC GYP	EXP P1	-	-	EP on Stair C/D risers and treads. P1 on GYP walls and remaining stair finishes
401	ELEVATOR LOBBY	CPT 1,2,3,4		BR		GYP	P1	CONC	EXP	
402	OPEN OFFICE	CPT 1,2,3,4		BR MB	-	GYP	P	CONC	EXP	BR base at GYP partitions, MB base at exposed concrete walls. P colours TBD
403	KITCHEN	CT1		BR MB		CONC GYP	EXP P1/ PL1	AT2		BR base at GYP partitions, MB base at exposed concrete walls. P colours TBD
404	IT CLOSET	RF	-	RB	-	GYP	P1	CONC	EXP P1	
405	MEN'S WASHROOM	CT5	-	CT	-	CONC GYP CT6 CT8		ACT1	-	CT base to match floor tile (also align joints). Refer to interior elevations for locations
406	WOMEN'S WASHROOM	CT5	-	CT	-	CONC GYP CT6 CT8		ACT1	-	CT base to match floor tile (also align joints). Refer to interior elevations for locations
407	ELECTRICAL CLOSET	RF	-	RB	-	GYP	P1	CONC	EXP P1	
408	JANITOR'S ROOM	CT1	-	CT	-	CONC GYP	EXP P1	CONC	EXP	
409	EXIT STAIR A	CONC	EXP	-	-	CONC	EXP	CONC	EXP	

NO	NAME	FLOOR		BASE		WALLS		CEILING		REMARKS
		MAT	FIN	MAT	FIN	MAT	FIN	MAT	FIN	
410	ELECTRICAL CLOSET	RF	-	RB	-	CONC GYP	EXP P1	CONC	EXP P1	
411	UNIVERSAL WASHROOM	CT5		CT	-	GYP CT	P1 CT4 CT6	ACT1		CT base to match floor tile (also align joints)
412	EXIT STAIR B	CONC	EXP	-	-	CONC	EXP	CONC	EXP P2	
413	IT CLOSET	RF	-	RB	-	CONC GYP	EXP P1	CONC	EXP P1	
414	NOT USED									
415	NOT USED									
416	NOT USED									
417	NOT USED									
418	NOT USED									
419	NOT USED									
420	PHONE BOOTH	CPT 1,2,3,4		BR	-	GYP	P	CONC	EXP	P5 on North wall. All others P1
421	OFFICE	CPT 1,2,3,4		BR	-	GYP	P	CONC	EXP	
422	SERVER ROOM	CONC		MB	-	GYP	P	CONC	EXP	Sealer to Concrete floor
423	OFFICE	CPT 1,2,3,4		BR	-	GYP	P	CONC	EXP	
424	OFFICE	CPT 1,2,3,4		BR	-	GYP	P	CONC	EXP	
425	OFFICE	CPT 1,2,3,4		BR	-	GYP	P	CONC	EXP	
426	OFFICE	CPT 1,2,3,4		BR	-	GYP	P	CONC	EXP	

NO	NAME	FLOOR		BASE		WALLS		CEILING		REMARKS
		MAT	FIN	MAT	FIN	MAT	FIN	MAT	FIN	
427	OFFICE	CPT 1,2,3,4		BR	-	GYP	P	CONC	EXP	
428	OFFICE	CPT 1,2,3,4		BR	-	GYP	P	CONC	EXP	
429	BREAKOUT ROOM	CPT 1,2,3,4		BR	-	GYP	P	CONC	EXP	P4 on North wall. All others P1
430	OFFICE	CPT 1,2,3,4		BR	-	GYP	P	CONC	EXP	
431	OFFICE	CPT 1,2,3,4		BR	-	GYP	P	CONC	EXP	
432	OFFICE	CPT 1,2,3,4		BR	-	GYP	P	CONC	EXP	
433	OFFICE	CPT 1,2,3,4		BR	-	GYP	P	CONC	EXP	
434	OFFICE	CPT 1,2,3,4		BR	-	GYP	P	CONC	EXP	
435	OFFICE	CPT 1,2,3,4		BR	-	GYP	P	CONC	EXP	
436	MEETING ROOM	CPT 1,2,3,4		BR	-	GYP	P	CONC	EXP	P5 on South wall. All others P1
437	OFFICE	CPT 1,2,3,4		BR	-	GYP	P	CONC	EXP	
438	OFFICE	CPT 1,2,3,4		BR	-	GYP	P	CONC	EXP	
439	OFFICE	CPT 1,2,3,4		BR	-	GYP	P	CONC	EXP	
440	OFFICE	CPT 1,2,3,4		BR	-	GYP	P	CONC	EXP	
441	BREAKOUT ROOM	CPT 1,2,3,4		BR	-	GYP	P	CONC	EXP	P4 on North wall. All others P1
442	TENDER CLOSING	CPT		BR	-	GYP	P	CONC	EXP	P6 on North wall. All others P1

NO	NAME	FLOOR		BASE		WALLS		CEILING		REMARKS
		MAT	FIN	MAT	FIN	MAT	FIN	MAT	FIN	

ROOM		1,2,3,4								
------	--	---------	--	--	--	--	--	--	--	--

1.1 LEGEND

- .1 AC. Exposed Architectural Concrete, **(flat colourless sealant)**.
- .2 ACT(#) Ceiling Tile In accordance with Section 09 51 13.
 - .1 ACT Metalworks M11 White, *Armstrong*.
 - .3 AT(#) Acoustic Ceiling Panel: In accordance with Section 09 51 13.
 - .1 AT1 Hard Side Cloud White, *Kinetics*. (refer to *Reflected ceiling plans for location*)
 - .2 AT2 Hard Side Cloud Grey Mix 238, *Kinetics*. (refer to *Reflected ceiling plans for location*)
 - .4 AW(#) Acoustic Wall Panel: In accordance with Section 09 53 00.
 - .5 BR Reveal Baseboard: 2" high Brushed Aluminum base with 1/4" cove bend recessed in GYP. 1/2". In accordance with Section 09 27 10.
 - .6 CG(#) Coloured Glass: Ceramic Enamel finish on back surface of 6 mm tempered glass.
 - .1 CG1 Quiet Hideaway, *Dulux* (white).
 - .2 CG2 Icon Grey, *Dulux* (light Grey)
 - .3 CG3 Obsidian Glass, *Dulux* (dark grey)
 - .7 CH Concrete Hardener Floor Finish: In accordance with Section 03 35 05.
 - .8 CPT Carpet Tile: In accordance with Section 09 68 13 - Tile Carpeting.
 - .1 CPT1 On Line TBD, *Interface* (25cm x 100cm).
 - .2 CPT2 Concrete Viva Colores 101180, Plateado, *Interface* (50cm x 50cm cut to (2) 25cm x 50cm).
 - .3 CPT3 Human Nature 104214, Nickel, *Interface* (25cm x 100cm).
 - .4 CPT4 Felt 101834, Monochrome, *Interface* (50cm x 50cm cut to (2) 25cm x 50cm).
 - .5 CPT5 On Line, 105266 Aquamarine, *Interface* (25cm x 100cm).

NO	NAME	FLOOR		BASE		WALLS		CEILING		REMARKS
		MAT	FIN	MAT	FIN	MAT	FIN	MAT	FIN	

- .9 CN(#)
 - .1 CN1 Solid Surface Countertop: in Accordance with Section **06 40 00**
Organic White 4600, Ceasarstone
 - .2 CN2 Deep Espresso, Corian
- .10 CT(#)
 - .1 CT1 Ceramic Tile: In accordance with Section 09 30 05 - Ceramic Tiling.
Interno 9, Pearl, Lap. RT., Ciot (60cm x 120cm).
 - .2 CT2 Not Used.
 - .3 CT3 Sistem C Fuma Citta, Arch., Ciot (10cm x 30cm). (refer to Interior elevations for location)
 - .4 CT4 Not Used.
 - .5 CT5 Blocks 5.0, White, Lap. RT., Ciot (60cm x 120cm). (refer to Interior elevations for location)
 - .6 CT6 Blocks 5.0, Dark, Lap. RT., Ciot (60cm x 120cm). (refer to Interior elevations for location)
 - .7 CT7 Light Seta Fumo, Ciot (5cmx10cm). (refer to Interior elevations for location)
 - .8 CT8 Super Super, White, Ciot (30cm x 60cm). (refer to Interior elevations for location)
- .11 EP Epoxy Coating.
- .12 GYP Gypsum Board: In accordance with Section 09 21 16 - Gypsum Board Assemblies.
- .13 HF Hygienic Flooring: In accordance with Section 09 72 00.
- .14 HW Hygienic Wall covering: In accordance with Section 09 72 00.
 - .1 Altro Whiterock, White W103-W104, Altro.
- .15 MB Brushed Metal Base: 2" high Brushed Aluminum base with ¼" cove bend, flush mounted to wall. In accordance with Section 09 27 10.
- .16 P#
 - .1 P1 Paint Finish: In accordance with Section 09 90 15 - Painting. Refer to Paint Schedule for colour.
 - .2 P2 Quiet Hideaway, eggshell finish, Dulux (white). P1 to be used unless otherwise noted in finish schedule
 - .3 P3 America's Cup, eggshell finish, Dulux (light blue)
 - .4 P4 Granite Grey, eggshell finish, Dulux (grey)
 - .5 P5 Teton Sky, eggshell finish, Dulux (dark blue)

NO	NAME	FLOOR		BASE		WALLS		CEILING		REMARKS
		MAT	FIN	MAT	FIN	MAT	FIN	MAT	FIN	

- .5 P5 Portuguese Sonnet, eggshell finish, *Dulux* (yellow)
- .6 P6 TBD, eggshell finish, *Dulux* (red)

.17 PL(#) Plastic Laminate: In accordance with Section **06 40 00**

- .1 PL1 **Caramello 18, Formica**
- .2 PL2 Greystone, Matte, *Formica*
- .3 PL3 **Novanoir 888, Formica**

.18 RB Resilient Floor Base: In accordance with Section 09 65 16 - Resilient Sheet Flooring.

.19 RF Resilient Flooring: In accordance with Section 09 65 16 - Resilient Sheet Flooring.

- .1 Marmoleum Walton Uni, 171 Cement, *Forbo* (2.5mm)

.20 SL Sealed Concrete: In accordance with Section 03 35 00 - Concrete Finishing.

.21 SF Safety Flooring

- .1 Altro Classic 25, Graphite X2546R11, Altro.

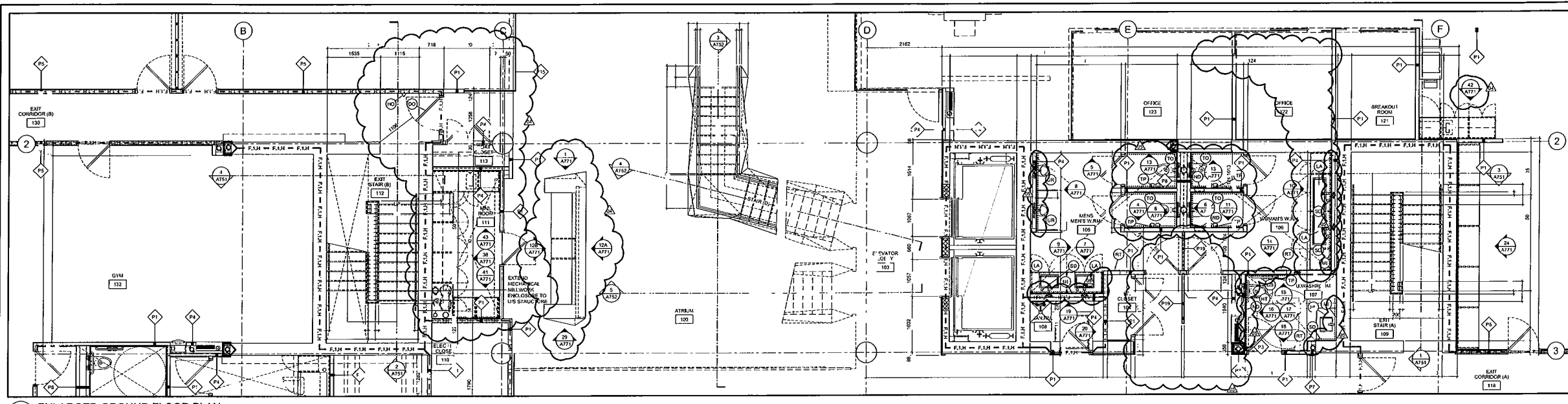
.22 ST Stone.

- .1 ST1 Ledgerock Algonquin Honed SA16-178, 12"x24", 8mm thickness.

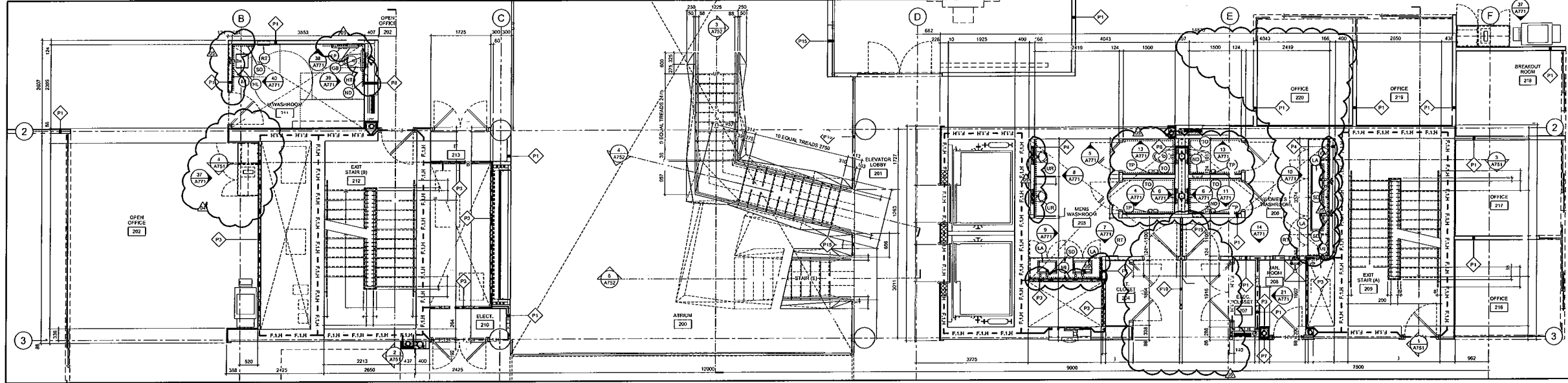
1.2 NOTES

- 1. All exposed edges of CT to be finished with Aluminum edge trim in accordance with Section 09 30 05.
- 2. All CT base joints to match floor tile and to be aligned with floor tile joints.

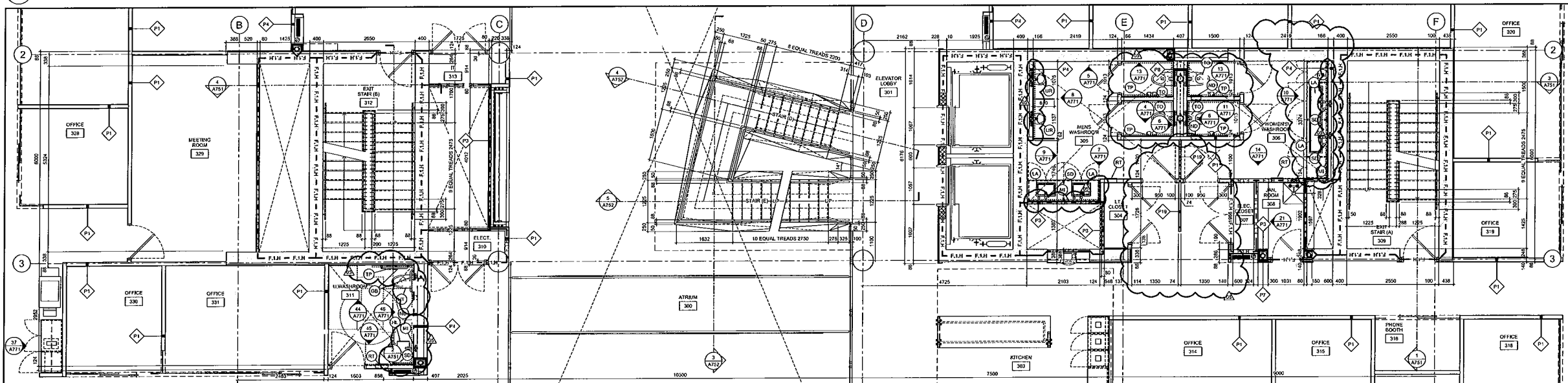
END OF SECTION



1 ENLARGED GROUND FLOOR PLAN
SCALE 1:150



2 ENLARGED SECOND FLOOR PLAN
SCALE 1:150

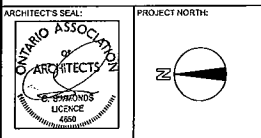


3 ENLARGED THIRD FLOOR PLAN
SCALE 1:150

GENERAL NOTES

- A THE CONTRACTOR SHALL CHECK AND VERIFY ALL DIMENSIONS ON SITE AND REPORT ALL DISCREPANCIES TO THE ARCHITECT.
- B DO NOT SCALE DRAWINGS.
- C ALL WORK SHALL COMPLY WITH THE ONTARIO BUILDING CODE AND THE REQUIREMENTS OF ALL AUTHORITIES HAVING JURISDICTION.
- D THIS DRAWING IS THE EXCLUSIVE PROPERTY OF CHRISTOPHER SIMMONDS ARCHITECT INC. COPYRIGHT RESERVED.

05	CONSTRUCTION UPDATE	03/14/2017
04	CONSTRUCTION UPDATE	02/02/2017
03	ISSUED FOR CONSTRUCTION	11/11/2016
02	REVISED BUILDING PERMIT	09/23/2016
01	BUILDING PERMIT	08/05/2016
REV.	ISSUED FOR	MM/DD/YYYY

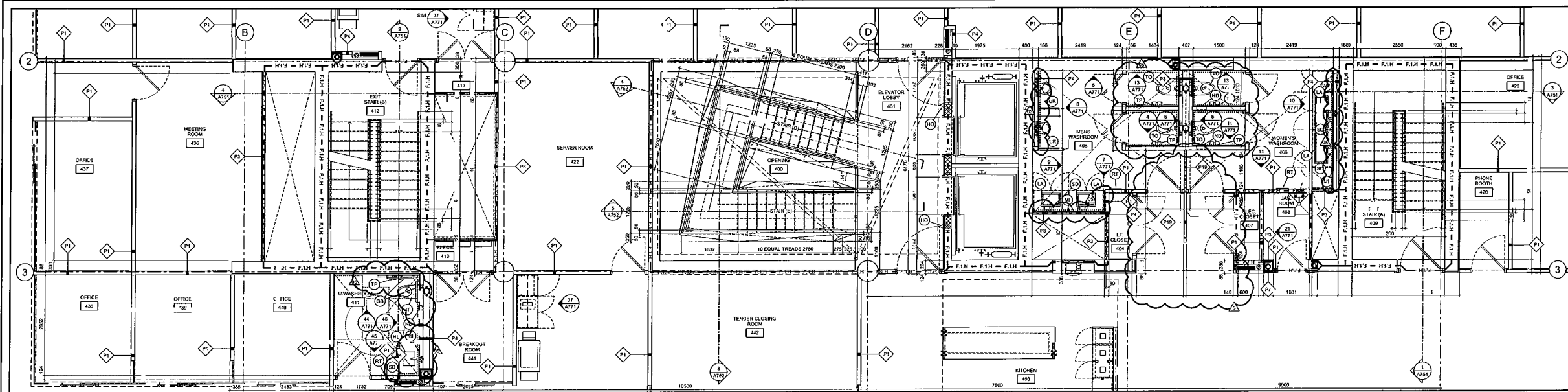


Christopher Simmonds
Architect
182 DENVER / GERRARD ST. EAST ONTARIO ON M4M 1B7
416.547.5448 PHONE / 416.547.5258 FAX
csm@csa.com

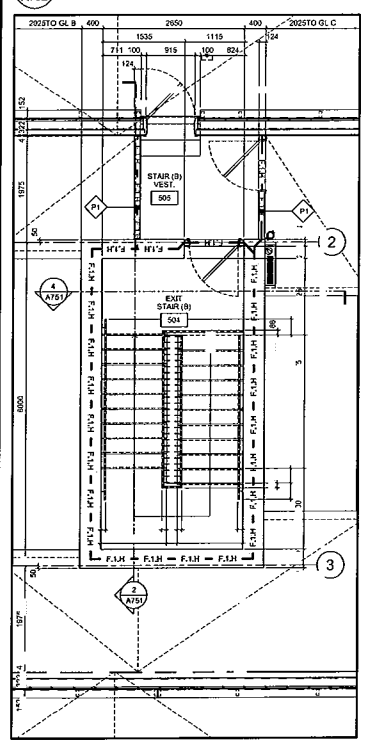
PROJECT: TOMLINSON NEW BUILDING

DRAWING TITLE: ENLARGED G'ND & 2'ND & 3'RD PART. PLANS

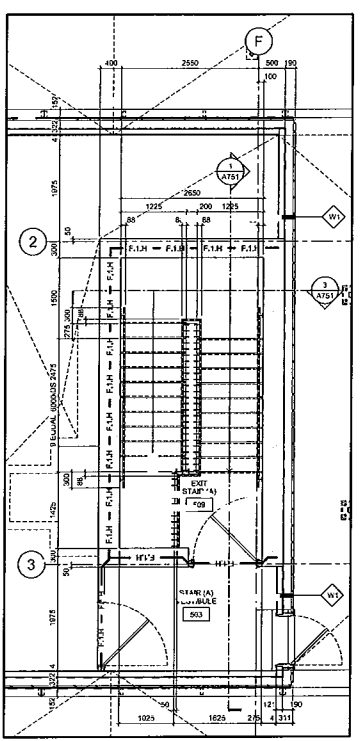
DATE:	10/5/2015	DRAWING NO:
SCALE:	AS INDICATED	
DRAWN BY:	JK	
JOB NO:	574-15	A701



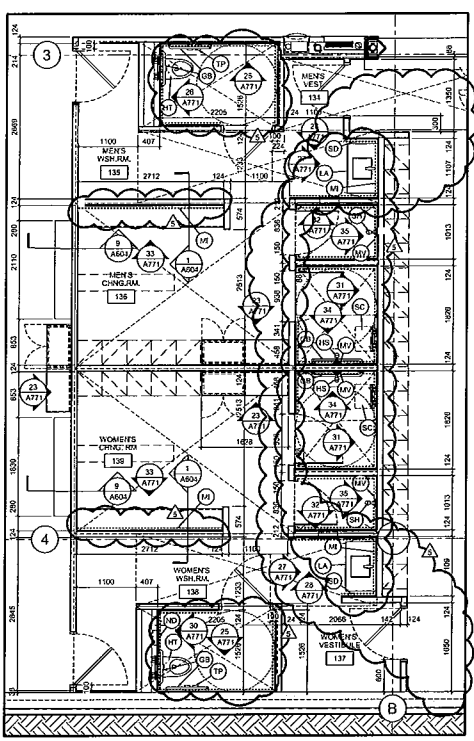
1 ENLARGED PARTIAL FOURTH FLOOR PLAN
A702 SCALE=1/32



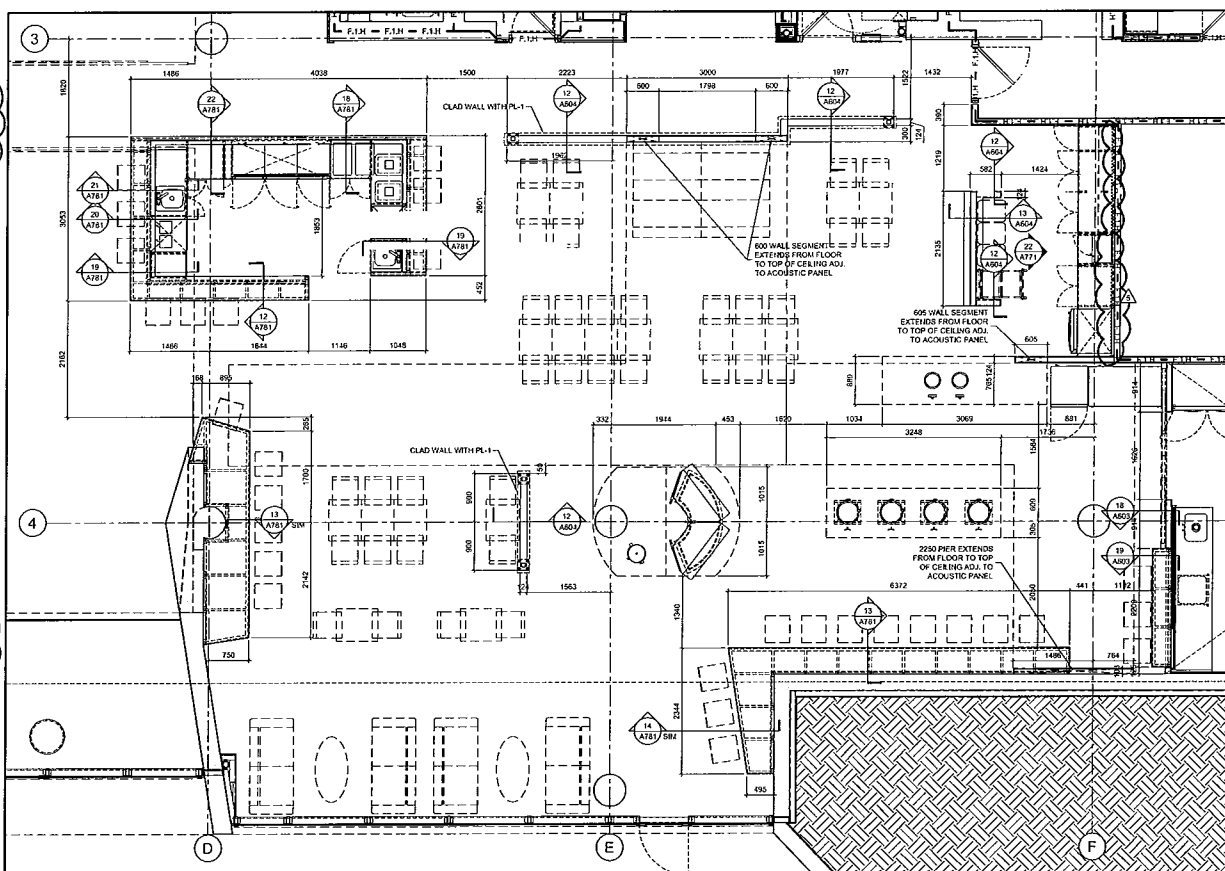
2 ENLARGED PARTIAL M. P. PLAN N.
A702 SCALE=1/32



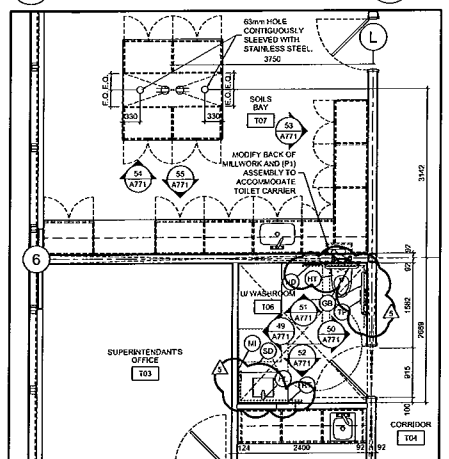
3 ENLARGED PARTIAL M. P. PLAN S.
A702 SCALE=1/32



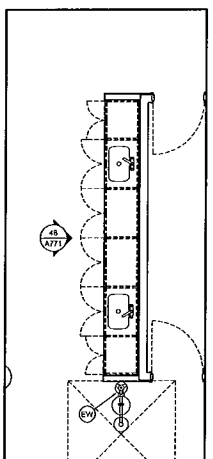
4 ENL. PART. GROUND FLOOR CHANGE ROOM PLAN
A702 SCALE=1/32



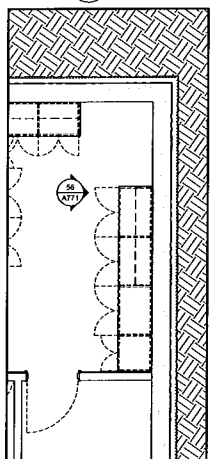
5 ENLARGED PARTIAL GROUND FLOOR CAFETERIA PLAN
A702 SCALE=1/32



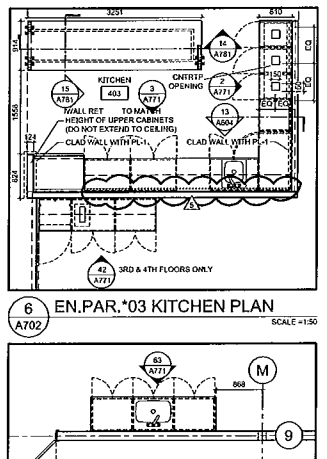
6 EN. PAR. '03 KITCHEN PLAN
A702 SCALE=1/32



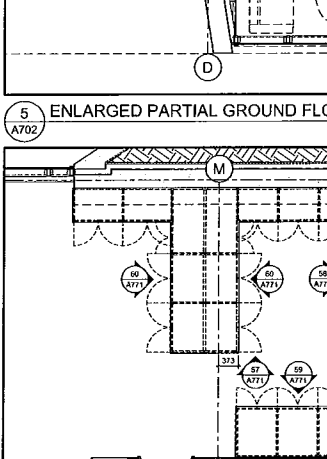
7 ENL. PARTIAL TEST FACILITY T06 & T07 PLAN
A702 SCALE=1/32



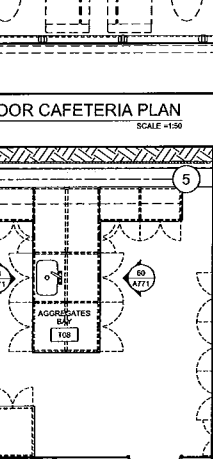
8 EN. P'T T. F. T04 PL.
A702 SCALE=1/32



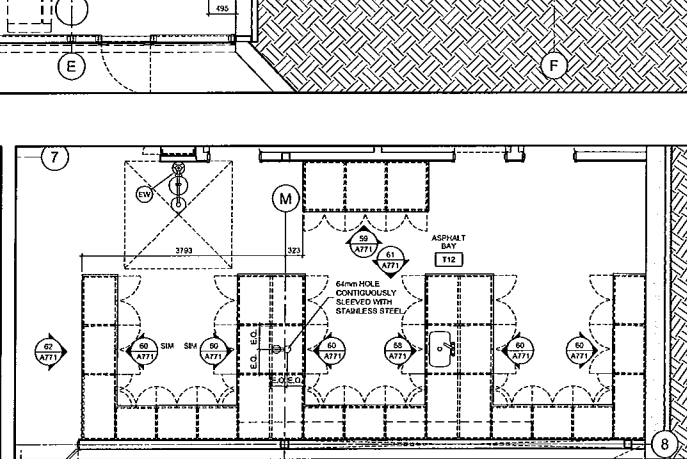
9 EN. P'T T. F. T08 PL.
A702 SCALE=1/32



10 ENL. PARTIAL T. F. T13 PLAN
A702 SCALE=1/32



11 ENLARGED PARTIAL TEST FACILITY T08 PLAN
A702 SCALE=1/32

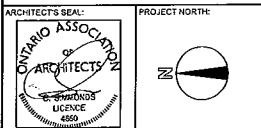


12 ENLARGED PARTIAL TEST FACILITY T12 PLAN
A702 SCALE=1/32

GENERAL NOTES

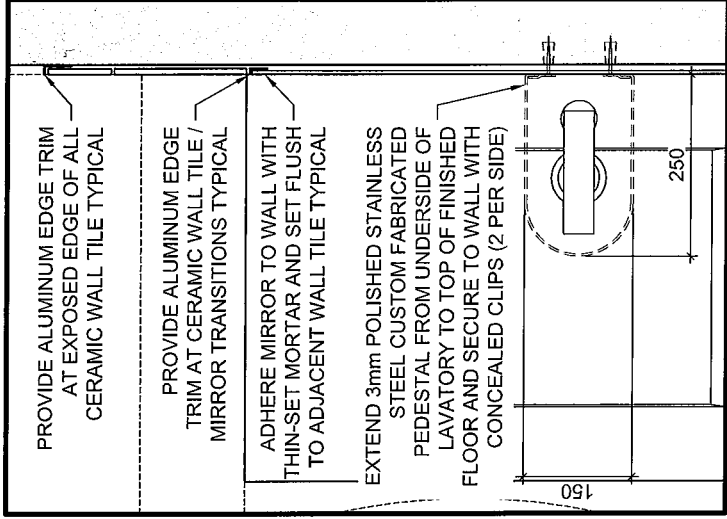
- THE CONTRACTOR SHALL CHECK AND VERIFY ALL DIMENSIONS ON SITE AND REPORT ALL DISCREPANCIES TO THE ARCHITECT.
- DO NOT SCALE DRAWINGS.
- ALL WORK SHALL COMPLY WITH THE ONTARIO BUILDING CODE AND THE REQUIREMENTS OF ALL AUTHORITIES HAVING JURISDICTION.
- THIS DRAWING IS THE EXCLUSIVE PROPERTY OF CHRISTOPHER SIMMONDS ARCHITECT INC. COPYRIGHT RESERVED.

05	CONSTRUCTION UPDATE	03/14/2017
04	CONSTRUCTION UPDATE	02/02/2017
03	ISSUED FOR CONSTRUCTION	11/11/2016
02	REVISED BUILDING PERMIT	09/23/2016
01	BUILDING PERMIT	08/05/2016
REV.	ISSUED FOR	MM/DD/YYYY



Christopher Simmonds Architect
 PROJECT: TOMLINSON NEW BUILDING
 TREASURY/RECEIPTS ST. CATHARINES ONTARIO
 433.547.7888 PHONE / 416.547.7528 FAX
 csa@csaarch.com

DRAWING TITLE:
 ENLARGED G'ND & 4TH & M.P. PAR. PLANS
 DATE: 03/05/2015 DRAWING NO:
 SCALE: AS INDICATED
 DRAWN BY: JK
 JOB NO: 574-15 **A702**



23 GR. FL. PL. DET.

SCALE = 1:10

A501

DATE: 03/16/2017 SCALE: AS INDICATED DRAWN BY: JK JOB No: 574-15 DRAWING No:	PROJECT: TOMLINSON NEW BUILDING	
ASK-119	DRAWING TITLE: REFERENCE NEW DET. AS INDICATED	<p>Christopher Simmonds Architect</p> <p>TILBANKEX/HOUCLES ST. OTTAWA ON N1R 6K3 613.567.2888 PHONE / 613.567.7528 FAX csaarchitect.com</p>