



## R.W. TOMLINSON - NEW HEAD OFFICE

TAL-CO Building Innovations  
1341-2 Coker Street  
Greely, Ontario K4P 1A1  
Tel: 613-821-3959  
Fax: 613-821-2938

Issue date: 15-Mar-17  
Revision date: N/A  
Revision #: N/A

---

### CLARIFICATION #2 – Lot 3

The following modifications and clarifications are to be accounted for on this project. As well, when entering into the Form of Agreement to do the work, they shall become a part thereof.

#### **Instruction/Clarifications:**

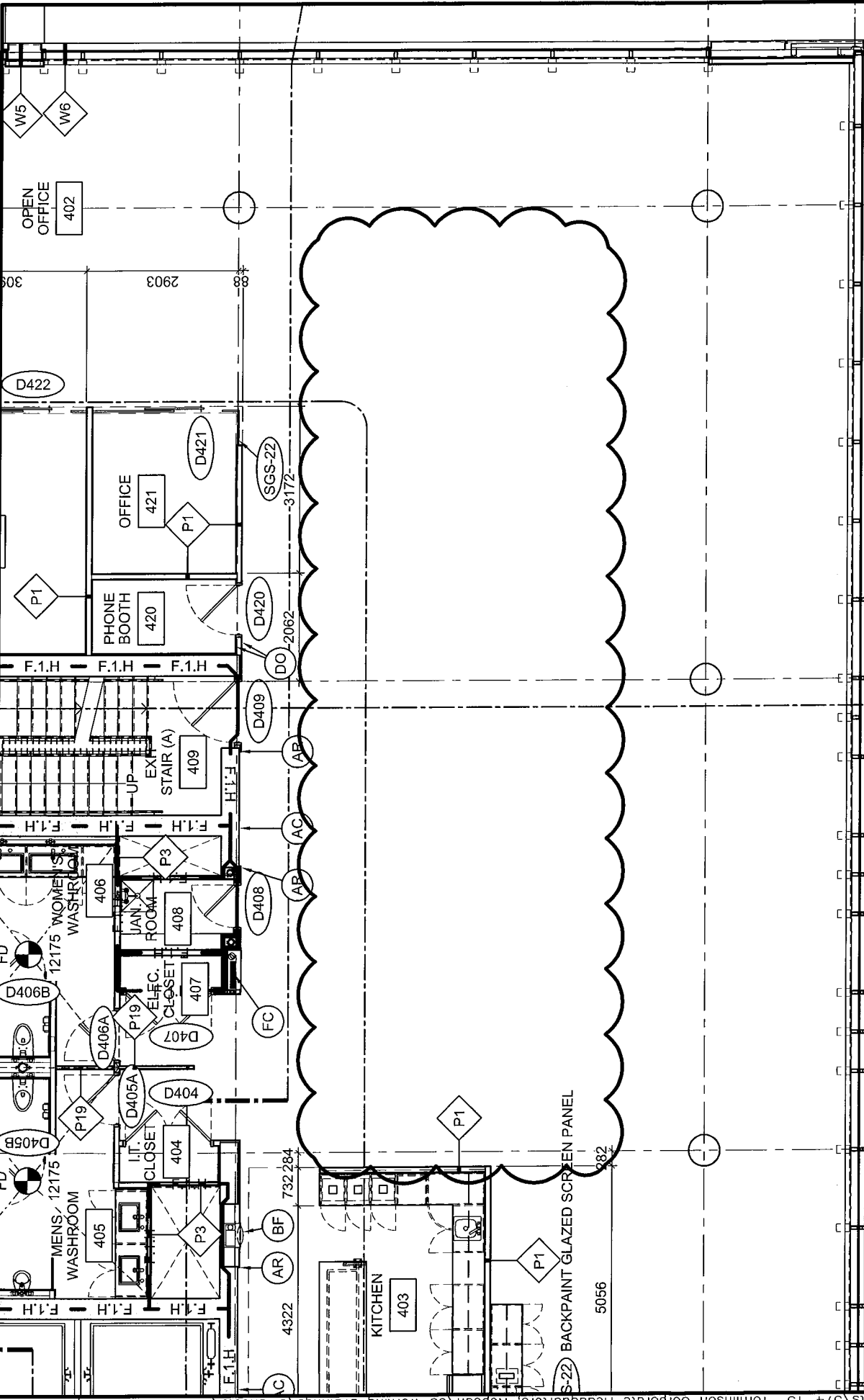
Please be advised that Clarification #2 Lot 3 has been issued for the above-mentioned project.

- See 5 attached ASKs (109-113) for Floor 4 Revisions.

**Reminder: It is your responsibility to consult ALL documents, drawings, sketches, Clarifications, Addenda, and Supplemental Instructions.**

For questions or further information, please contact the office by e-mail at [info@tal-co.com](mailto:info@tal-co.com).

**End of Clarification No. 2 – Lot 3**



DATE:	2017/03/09
SCALE:	1:100
DRAWN BY:	JK
JOB No:	574-15
DRAWING No:	ASK-109

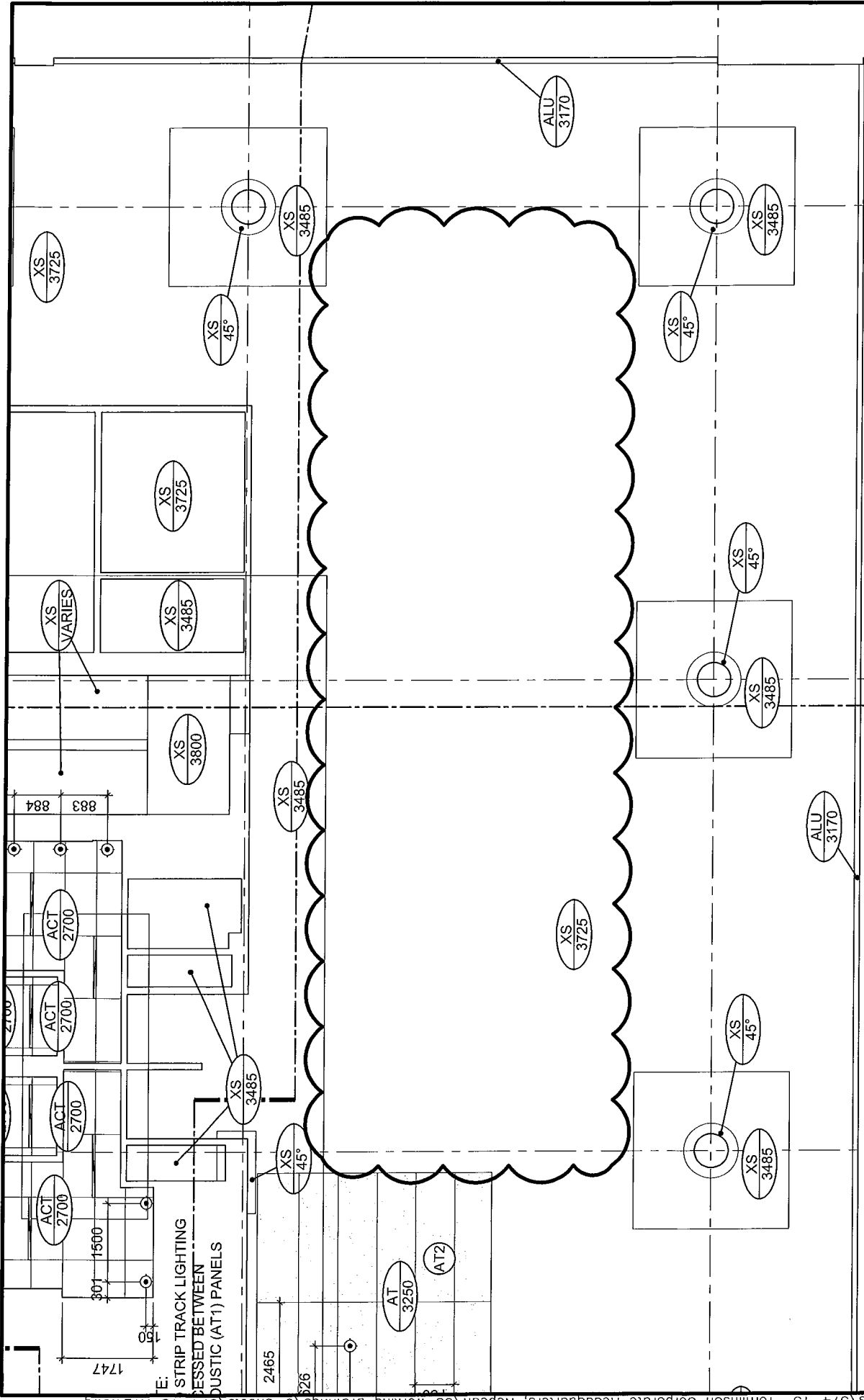
PROJECT:  
**TOMLINSON NEW BUILDING**

DRAWING TITLE:  
**REFERENCE PARTIAL PLAN 1/A104**



**Christopher Simmonds Architect**

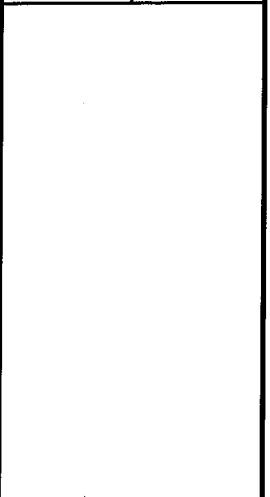
THE ANNEX / RECULUS ST. OTTAWA ON K1R 6R3  
 613-562-7888 PHONE / 613-562-7524 FAX  
 csa@csaarch.com



DATE:	2017/03/09
SCALE:	1:100
DRAWN BY:	JK
JOB No:	574-15
DRAWING No:	ASK-110

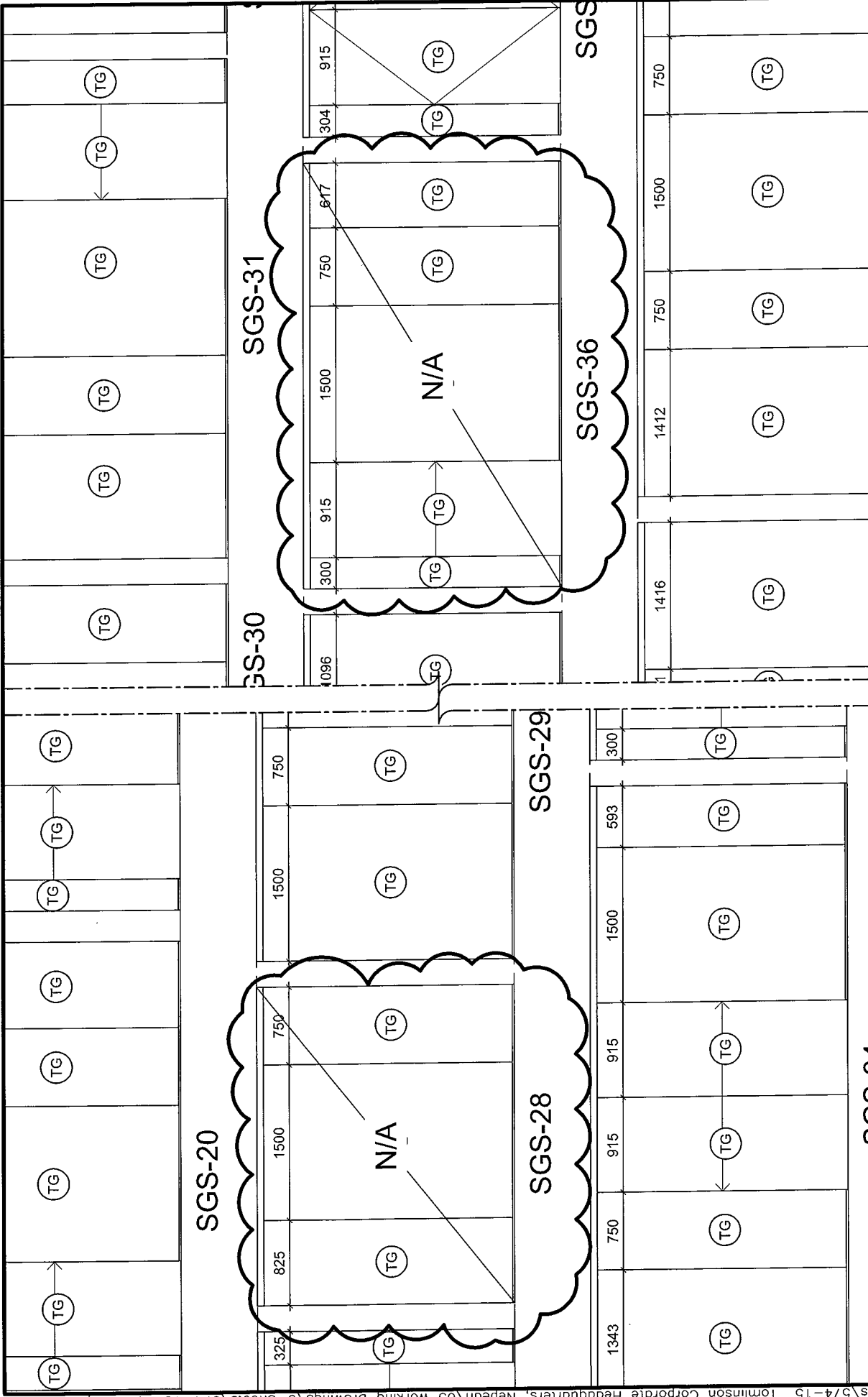
PROJECT:  
**TOMLINSON NEW BUILDING**

DRAWING TITLE:  
**REF. PARTIAL CEILING PLAN 1/A124**



**Christopher Simmonds Architect**

THE ANNEX/ARCCELLES ST. OTTAWA ON K1R 8R3  
 613.567.7888 PHONE / 613.567.7528 FAX  
 csaarchitect.com



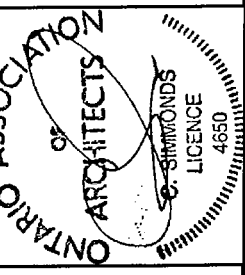
<p>Christopher Simmonds Architect</p> <p>THE ANNEX / 4600 LESLIE ST. OTTAWA ON K1R4S2 613.567.7888 PHONE / 613.567.7528 FAX csaarchitects.com</p>	<p>ONTARIO ASSOCIATION OF ARCHITECTS LICENCE 4650</p>	<p>PROJECT: TOMLINSON NEW BUILDING</p>	<p>DATE: 2017/03/09</p>
		<p>DRAWING TITLE: REFERENCE PARTIAL DETAIL 8/A901</p>	<p>SCALE: 1:50</p> <p>DRAWN BY: JK</p> <p>JOB No: 574-15</p> <p>DRAWING No: <b>ASK-111</b></p>

FOURTH FLOOR

D401A	1220	2440	SCD-1	3/4HR	WDF-1	3/4HR	11/A002
D401B	1220	2440	SCD-1	3/4HR	WDF-1	3/4HR	11/A002
D404	2X813	2440	SCD-1	N/A	WDF-1	N/A	9/A002
D405A	950	2440	SCD-1	N/A	WDF-1	N/A	9/A002
D405B	813	2440	SCD-1	N/A	WDF-1	N/A	9/A002
D405C	813	2440	SCD-1	N/A	WDF-1	N/A	9/A002
D406A	950	2440	SCD-1	N/A	WDF-1	N/A	9/A002
D406B	813	2440	SCD-1	N/A	WDF-1	N/A	9/A002
D406C	813	2440	SCD-1	N/A	WDF-1	N/A	9/A002
D407	2X813	2440	SCD-1	3/4HR	WDF-1	3/4HR	11/A002
D408	813	2440	SCD-1	3/4HR	WDF-1	3/4HR	11/A002
D409	1169	2440	SCD-2	3/4HR	WDF-1	3/4HR	11/A002
D410	2X762	2440	SCD-1	3/4HR	WDF-1	3/4HR	11/A002
D411	950	2440	SCD-1	N/A	WDF-1	N/A	9/A002
D412	915	2440	SCD-2	3/4HR	WDF-1	3/4HR	11/A002
D413	2X762	2440	SCD-1	N/A	WDF-1	N/A	9/A002
D414	RESERVED						
D415	RESERVED						
D416	RESERVED						
D417	RESERVED						
D418	RESERVED						
D419	RESERVED						
D420	950	2440	SCD-1	N/A	WDF-1	N/A	9/A002
D421	915	2750	SGD-1	N/A	SGS-27	N/A	N/A
D422	950	2750	SGD-1	N/A	SGS-35	N/A	N/A
D423	915	2750	SGD-1	N/A	SGS-47	N/A	N/A
D424	915	2750	SGD-1	N/A	SGS-48	N/A	N/A
D425	915	2750	SGD-1	N/A	SGS-7	N/A	N/A
D426	915	2750	SGD-1	N/A	SGS-7	N/A	N/A
D427	915	2750	SGD-1	N/A	SGS-7	N/A	N/A
D428	915	2750	SGD-1	N/A	SGS-13	N/A	N/A
D429	915	2750	SGD-1	N/A	SGS-1	N/A	N/A
D430	915	2750	SGD-1	N/A	SGS-7	N/A	N/A

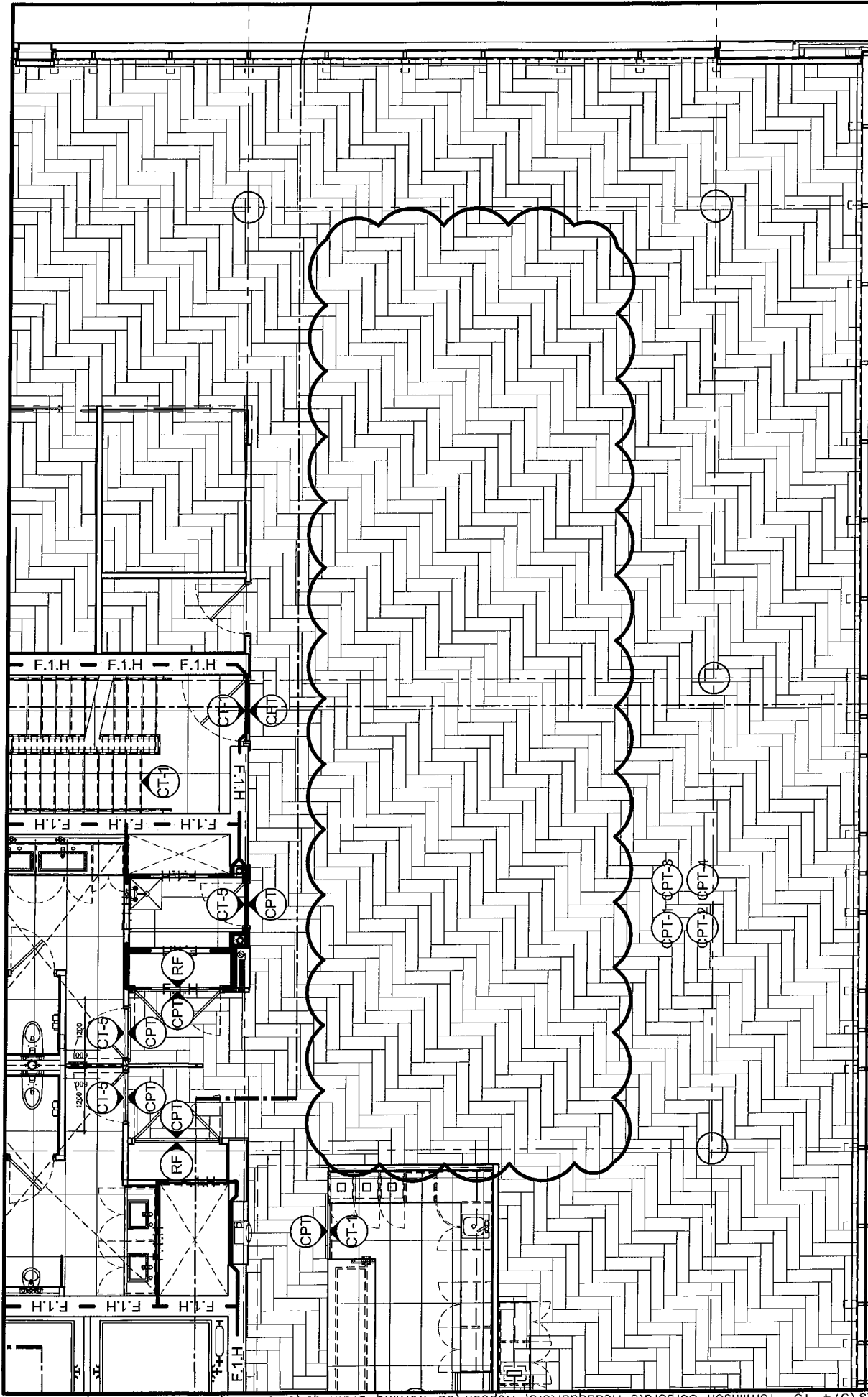
PROJECT:  
**TOMLINSON NEW BUILDING**  
 DRAWING TITLE:  
**REFERENCE PARTIAL DETAIL 5/A901**

DATE: 2017/03/13  
 SCALE: N/A  
 DRAWN BY: JK  
 JOB No: 574-15  
 DRAWING No: **ASK-112**



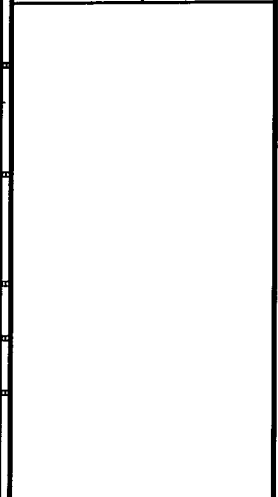
**Christopher Simmonds Architect**

THE ANNEX / RECULDES ST. OTTAWA ON K1E6R3  
 613.567.7888 PHONE / 613.567.7528 FAX  
 csaarchitect.com



DATE: 2017/03/09  
 SCALE: 1:100  
 DRAWN BY: JK  
 JOB No: 574-15  
 DRAWING No: **ASK-113**

PROJECT: TOMLINSON NEW BUILDING  
 DRAWING TITLE: REF. PART. FLOOR FINISH PLAN 1/A134



**Christopher Simmonds Architect**  
 THE ANNEX / 485 CECILES ST. OTTAWA ON K1K 6K3  
 613-567-7888 PHONE / 613-567-7528 FAX  
 csaarchitect.com