



TAL-CO SUPPLEMENTAL INSTRUCTION #37 REV 01			
Project Name:	RW TOMLINSON - NEW HEAD OFFICE		
Project Location:	100 CitiGate Drive, Ottawa, Ontario		
ARCH. SI #:	ASK 109 - ASK 113	Issued By:	Farah Bano
STRUC. SI #:	N/A	Date Issued:	March 15, 2017
MECH. SI #:	SKM-31 & SKM-32	Revision #:	1
ELEC. SI #:	N/A	Revision Date:	March 21, 2017

Supplemental Instructions are issued by the Construction Manager to record a clarification or revision to the previously issued Contact Documentation as reflected by the attached information prepared by the identified Professionals.

The Construction Manager shall review the Supplemental Instruction and the attached information and issue to the affected Trade Contractors identifying the following course of action by the Trade Contractor.

Notify TAL-CO within 5 days of receipt, if the attached documents will require a change to Contract Price or Schedule.

Title: Floor 4 Layout Revision

Reference:

Architectural - Construction Update 02-Feb-17

Attachments:

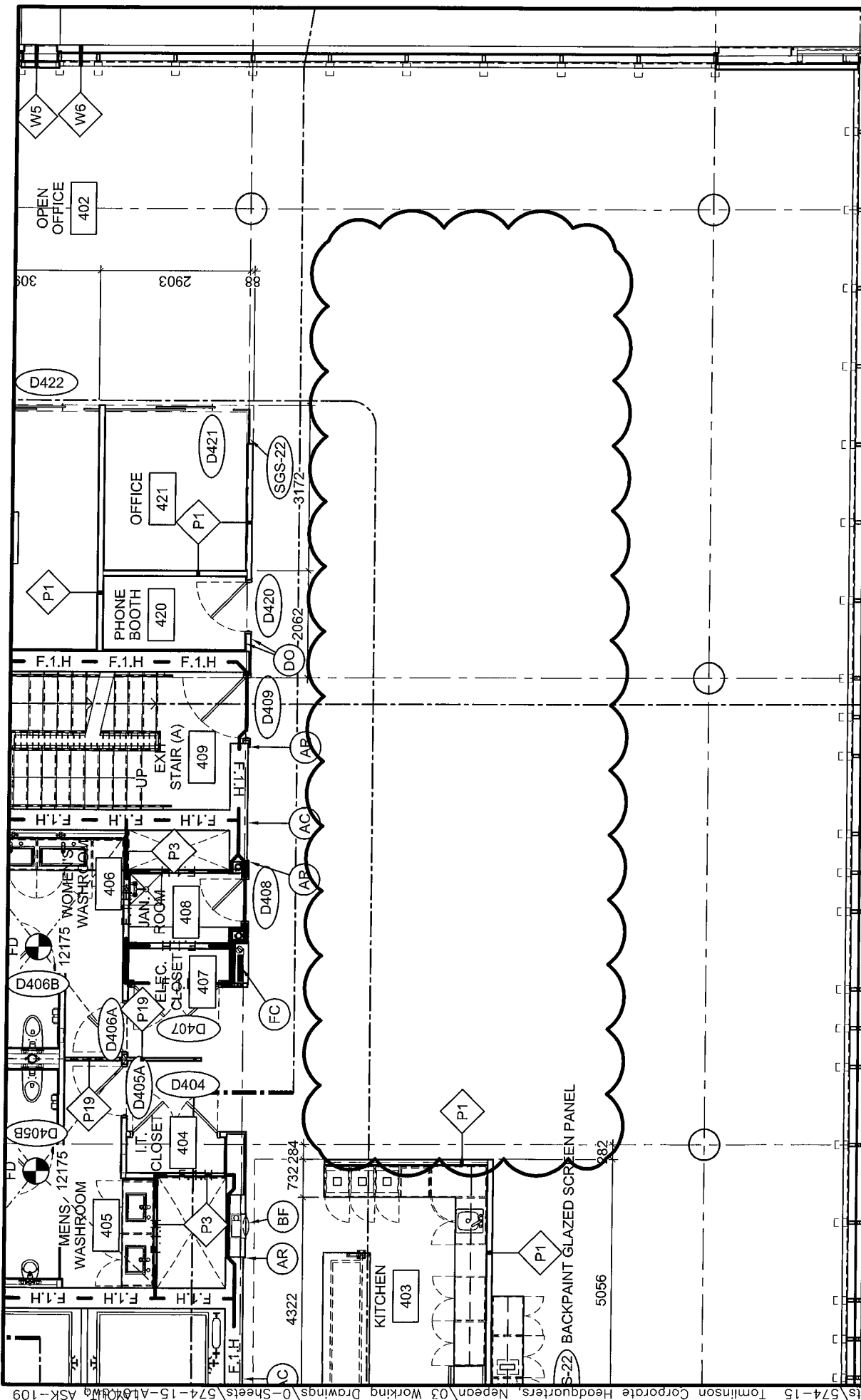
- ASK - 109 **SKM-31**
- ASK - 110 **SKM-32**
- ASK - 111
- ASK - 112
- ASK - 113

Description of the Work:

Clarification provided for floor 4 revisions - Sketches show revised plans & details.

Reason:

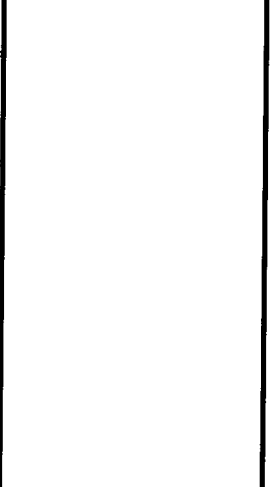
Clarification provided for floor 4 revisions - Sketches show revised plans & details.



DATE:	2017/03/09
SCALE:	1:100
DRAWN BY:	JK
JOB No:	574-15
DRAWING No:	ASK-109

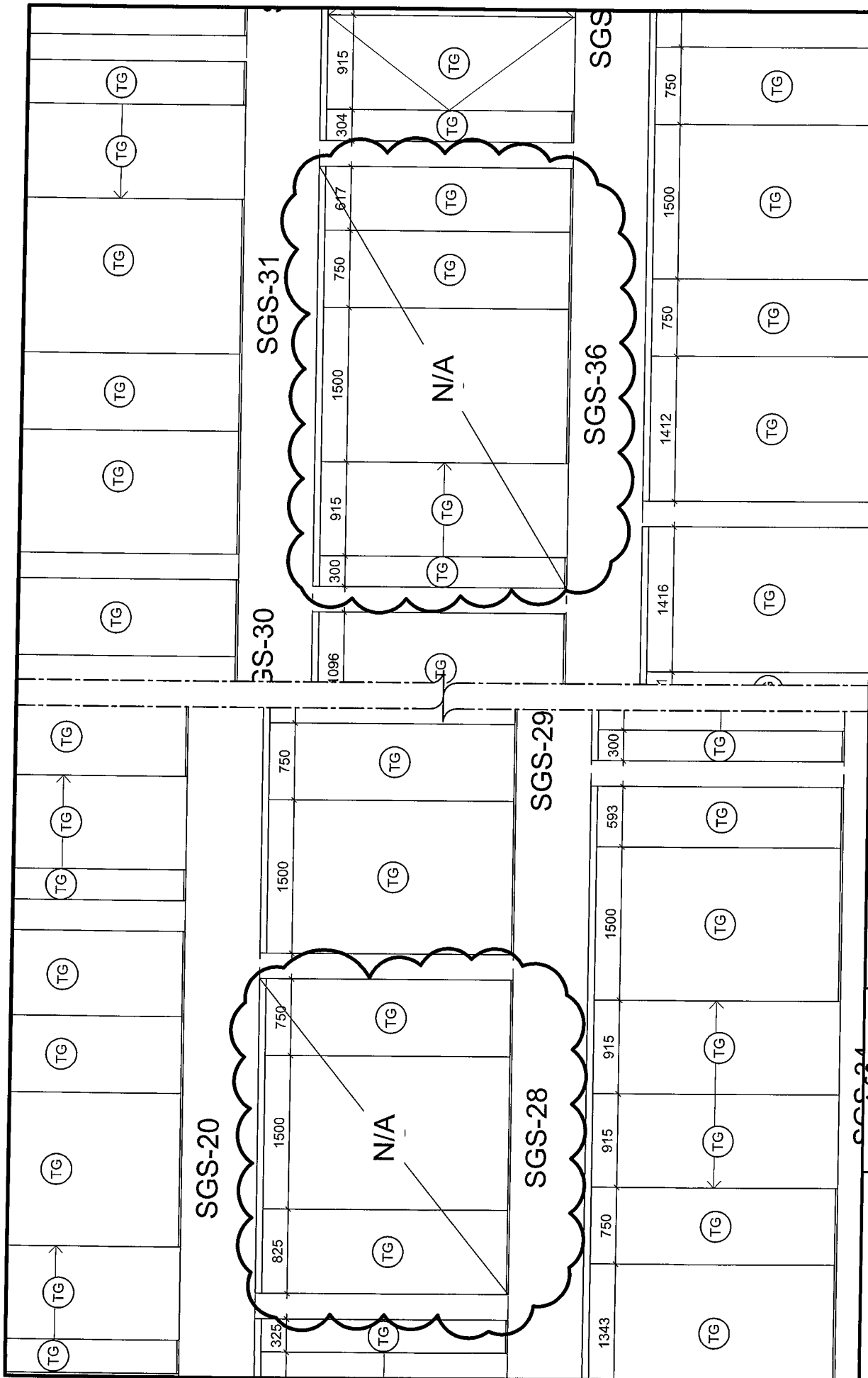
PROJECT:
TOMLINSON NEW BUILDING

DRAWING TITLE:
REFERENCE PARTIAL PLAN 1/A104

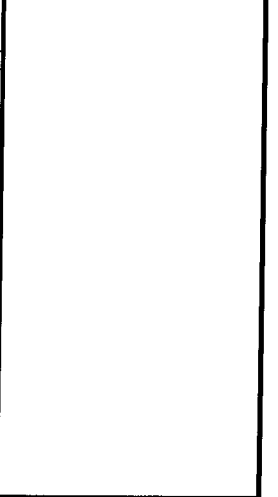


Christopher Simmonds Architect

TUHANNAH WHEELER ST. OTTAWA ON K1R 6K3
 613.667.7888 PHONE / 613.657.7528 FAX
 csaarchitect.com



PROJECT:	TOMLINSON NEW BUILDING	DATE:	2017/03/09
DRAWING TITLE:	REFERENCE PARTIAL DETAIL 8/A901	SCALE:	1:50
		DRAWN BY:	JK
		JOB No:	574-15
		DRAWING No:	ASK-111



Christopher Simmonds Architect

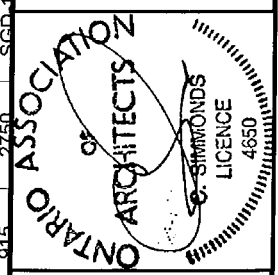
THIRANKX/66CCLUS ST OTTAWA ON K1R4S3
413.567.7888 PHONE / 413.567.7328 FAX
carchitect.com

FOURTH FLOOR

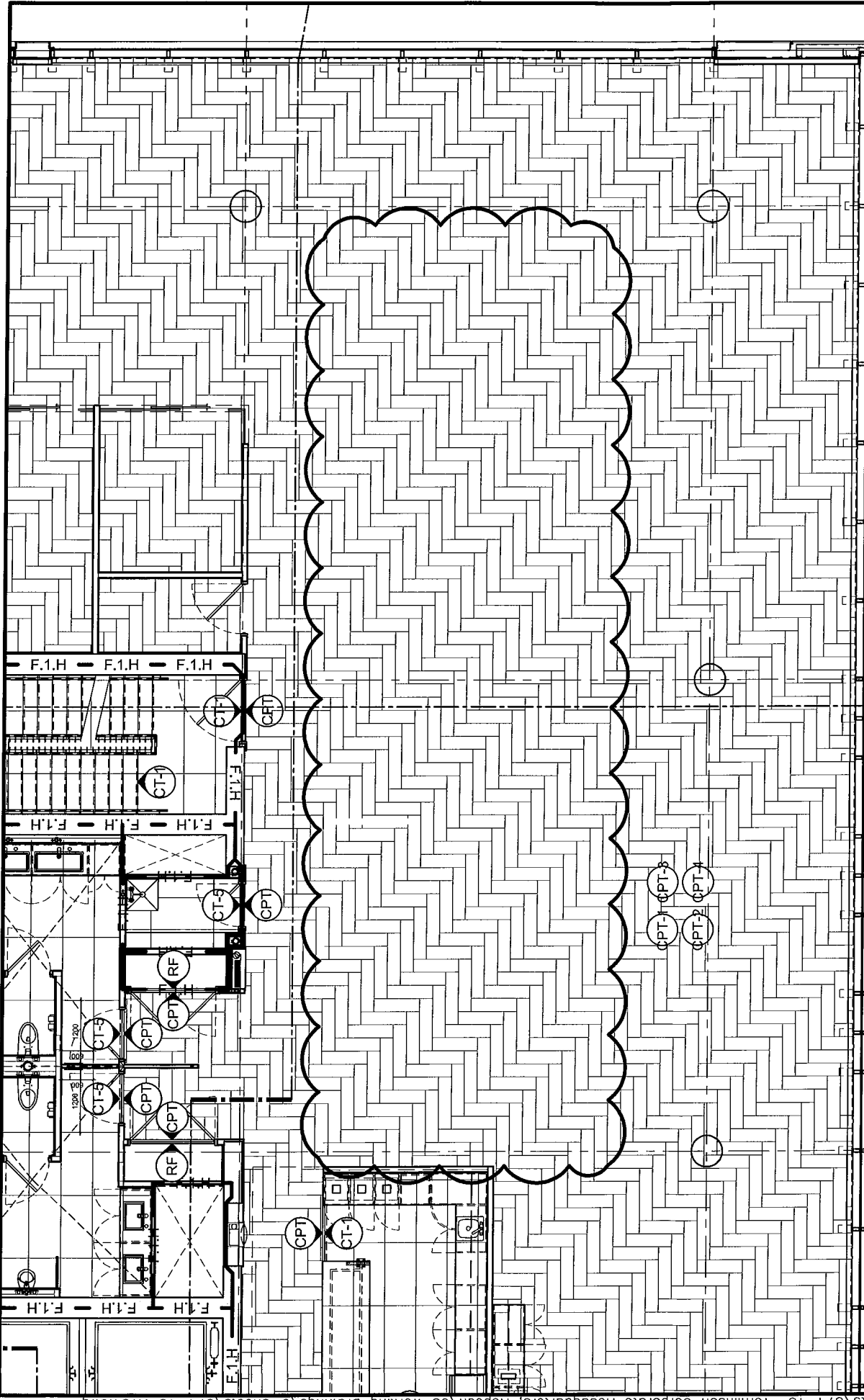
D401A	1220	2440	SCD-1	3/4HR	WDF-1	3/4HR	11/A002
D401B	1220	2440	SCD-1	3/4HR	WDF-1	3/4HR	11/A002
D404	2X813	2440	SCD-1	N/A	WDF-1	N/A	9/A002
D405A	950	2440	SCD-1	N/A	WDF-1	N/A	9/A002
D405B	813	2440	SCD-1	N/A	WDF-1	N/A	9/A002
D405C	813	2440	SCD-1	N/A	WDF-1	N/A	9/A002
D406A	950	2440	SCD-1	N/A	WDF-1	N/A	9/A002
D406B	813	2440	SCD-1	N/A	WDF-1	N/A	9/A002
D406C	813	2440	SCD-1	N/A	WDF-1	N/A	9/A002
D407	2X813	2440	SCD-1	3/4HR	WDF-1	3/4HR	11/A002
D408	813	2440	SCD-1	3/4HR	WDF-1	3/4HR	11/A002
D409	1169	2440	SCD-2	3/4HR	WDF-1	3/4HR	11/A002
D410	2X762	2440	SCD-1	3/4HR	WDF-1	3/4HR	11/A002
D411	950	2440	SCD-1	N/A	WDF-1	N/A	9/A002
D412	915	2440	SCD-2	3/4HR	WDF-1	3/4HR	11/A002
D413	2X762	2440	SCD-1	N/A	WDF-1	N/A	9/A002
D414	RESERVED						
D415	RESERVED						
D416	RESERVED						
D417	RESERVED						
D418	RESERVED						
D419	RESERVED						
D420	950	2440	SCD-1	N/A	WDF-1	N/A	9/A002
D421	915	2750	SGD-1	N/A	SGS-27	N/A	N/A
D422	950	2750	SGD-1	N/A	SGS-35	N/A	N/A
D423	915	2750	SGD-1	N/A	SGS-47	N/A	N/A
D424	915	2750	SGD-1	N/A	SGS-48	N/A	N/A
D425	915	2750	SGD-1	N/A	SGS-7	N/A	N/A
D426	915	2750	SGD-1	N/A	SGS-7	N/A	N/A
D427	915	2750	SGD-1	N/A	SGS-7	N/A	N/A
D428	915	2750	SGD-1	N/A	SGS-13	N/A	N/A
D429	915	2750	SGD-1	N/A	SGS-1	N/A	N/A
D430	915	2750	SGD-1	N/A	SGS-7	N/A	N/A

PROJECT: TOMLINSON NEW BUILDING
 DRAWING TITLE: REFERENCE PARTIAL DETAIL 5/A901

DATE: 2017/03/13
 SCALE: N/A
 DRAWN BY: JK
 JOB No: 574-15
 DRAWING No: ASK-112

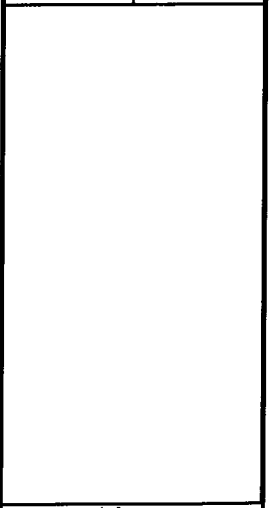


Christopher Simmonds Architect
 412-567-7818 PHONE / 913-597-7528 FAX
 christopher.com

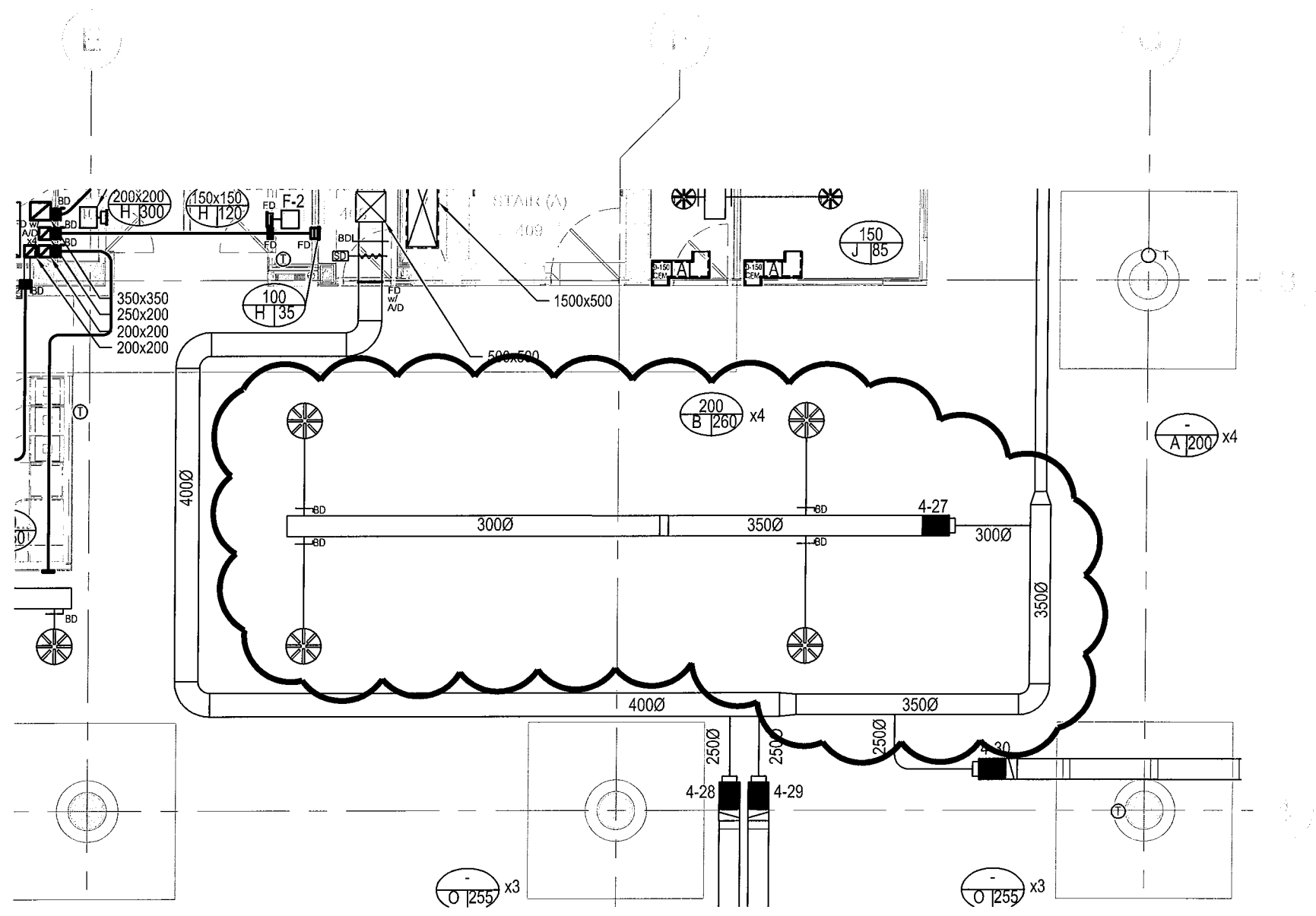


DATE: 2017/03/09
 SCALE: 1:100
 DRAWN BY: JK
 JOB No: 574-15
 DRAWING No: ASK-113

PROJECT: TOMLINSON NEW BUILDING
 DRAWING TITLE: REF. PART. FLOOR FINISH PLAN 1/A134

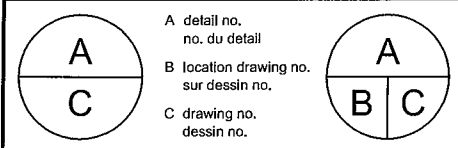


Christopher Simmonds Architect
 THE ANNEX 465 ECLES ST. OTTAWA ON N1K4R3
 613.567.7888 PHONE / 613.567.7828 FAX
 csarchitect.com



REFERENCE SI #037
REFER TO DRAWING M124

Optimum Mechanical Solutions Inc.
84 Bentley Avenue
Ottawa, Ontario, K2E 6T9
Tel.: 613-228-9500 Fax: 613-228-9218
www.optimummech.com




project **TOMLINSON NEW BUILDING** projet
CITIGATE, OTTAWA

drawing **HVAC FOURTH FLOOR REVISION** dessin

Designed By	C.L.M.	Conçu par
Date	2017/03/17	(yyyy/mm/dd)
Drawn By	C.L.M.	Dessiné par
Date	2017/03/17	(yyyy/mm/dd)
Reviewed By	T.N.	Examiné par
Date	2017/03/17	(yyyy/mm/dd)
Approved By	T.N.	Approuvé par
Date	2017/03/17	(yyyy/mm/dd)
Tender		Soumission
Project Manager	TAL CO	Administrateur de projets
Project no.	15-1570	No. du projet
Drawing no.	SKM-31	No. du dessin

FOURTH FLOOR VAV SCHEDULE				
TAG	UNIT SIZE	MIN. CFM	MAX. CFM	MBH @ MAX. CFM
4-1	10	255	850	32.3
4-2	10	255	850	32.3
4-3	7	122	405	15.4
4-4	9	234	780	
4-5	5	77	255	
4-6	5	51	170	
4-7	9	234	780	
4-8	5	51	170	
4-9	6	87	290	
4-10	6	84	280	
4-11	5	51	170	
4-12	6	84	280	
4-13	9	234	780	
4-14	9	234	780	
4-15	8	162	540	20.5
4-16	12	383	1275	48.4
4-17	12	383	1275	48.4
4-18	8	153	510	19.4
4-19	8	153	510	19.4
4-20	8	180	600	22.8
4-21	8	156	520	
4-22	6	81	270	
4-23	6	93	310	
4-24	6	85	275	
4-25	N/A			
4-26	N/A			
4-27	12	312	1040	
4-28	9	234	765	29.1
4-29	9	230	765	29.1
4-30	9	240	800	30.4

REFERENCE SI #037
REFER TO DRAWING M124

project	TOMLINSON NEW BUILDING CITIGATE, OTTAWA	Designed By C.L.M. Date 2017/03/17	 Optimum Mechanical Solutions Inc. 84 Bentley Avenue Ottawa, Ontario, K2E 6T9 Tel:613-228-9500 Fax:613-228-9218 www.optimumech.com
		Drawn By C.L.M. Date 2017/03/17	
title	FOURTH FLOOR VAV SCHEDULE REVISION	Reviewed By T.N. Date 2017/03/17	Project no. 15-1570
		Scale N/A	Sketch no. SKM-32