



TAL-CO SUPPLEMENTAL INSTRUCTION #39 Rev01			
Project Name:	RW TOMLINSON - NEW HEAD OFFICE		
Project Location:	100 CitiGate Drive, Ottawa, Ontario		
ARCH. SI #:	ASK-120 & ASK-121	Issued By:	Farah Bano
STRUC. SI #:	N/A	Date Issued:	March 16, 2017
MECH. SI #:	SKM-33	Revision #:	1
ELEC. SI #:	N/A	Revision Date:	March 24, 2017

Supplemental Instructions are issued by the Construction Manager to record a clarification or revision to the previously issued Contact Documentation as reflected by the attached information prepared by the identified Professionals.

The Construction Manager shall review the Supplemental Instruction and the attached information and issue to the affected Trade Contractors identifying the following course of action by the Trade Contractor.

Notify TAL-CO within 5 days of receipt, if the attached documents will require a change to Contract Price or Schedule.

**Title:** Revised Floor 3 Offices

**Reference:**

Architectural - Construction Update 02-Feb-17  
 Current Mechanical Drawings

**Attachments:**

- ASK-120
- ASK-121
- SKM-33

**Description of the Work:**

Revised Floor 3 Offices shown on Sketch with corresponding revision to Door & Frame Schedule attached.

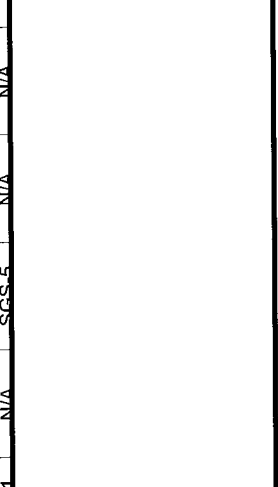
**Reason:**

Issued for detail on revised Floor 3 Office plan.

NO.	DOOR INFO.			FRAME / SCREEN IN			REMARKS	
	SIZE:		TYPE	LABEL	TYPE	LABEL		DETAIL
	WIDTH	HEIGHT						
THIRD FLOOR CONTINUED								
D305A	950	2440	SCD-1	N/A	WDF-1	N/A	9/A002	
D305B	813	2440	SCD-1	N/A	WDF-1	N/A	9/A002	
D305C	813	2440	SCD-1	N/A	WDF-1	N/A	9/A002	
D306A	950	2440	SCD-1	N/A	WDF-1	N/A	9/A002	
D306B	813	2440	SCD-1	N/A	WDF-1	N/A	9/A002	
D306C	813	2440	SCD-1	N/A	WDF-1	N/A	9/A002	
D307	2X813	2440	SCD-1	3/4HR	WDF-1	3/4HR	11/A002	
D308	813	2440	SCD-1	3/4HR	WDF-1	3/4HR	11/A002	
D309	915	2440	SCD-2	3/4HR	WDF-1	3/4HR	11/A002	
D310	2X762	2440	SCD-1	3/4HR	WDF-1	3/4HR	11/A002	
D311	950	2440	SCD-1	N/A	WDF-1	N/A	9/A002	
D312	915	2440	SCD-2	3/4HR	WDF-1	3/4HR	11/A002	
D313	2X762	2440	SCD-1	N/A	WDF-1	N/A	9/A002	
D314	915	2750	SGD-1	N/A	SGS-19	N/A	N/A	
D315	915	2750	SGD-1	N/A	SGS-46	N/A	N/A	
D316	915	2750	SGD-1	N/A	SGS-4	N/A	N/A	
D317	915	2750	SGD-1	N/A	SGS-4	N/A	N/A	
D318	915	2750	SGD-1	N/A	SGS-6	N/A	N/A	
D319	915	2750	SGD-1	N/A	SGS-5	N/A	N/A	
D320	915	2750	SGD-1	N/A	SGS-21	N/A	N/A	
D321	915	2750	SGD-1	N/A	SGS-10	N/A	N/A	
D322	915	2750	SGD-1	N/A	SGS-19	N/A	N/A	
D323	915	2750	SGD-1	N/A	SGS-7	N/A	N/A	
D324	915	2750	SGD-1	N/A	SGS-7	N/A	N/A	
D325	915	2750	SGD-1	N/A	SGS-8	N/A	N/A	
D326	915	2750	SGD-1	N/A	SGS-20	N/A	N/A	
D327	915	2750	SGD-1	N/A	SGS-6	N/A	N/A	
D328	915	2750	SGD-1	N/A	SGS-49	N/A	N/A	
D329	950	2440	SCD-1	N/A	WDF-1	N/A	9/A002	
D330	915	2750	SGD-1	N/A	SGS-5	N/A	N/A	

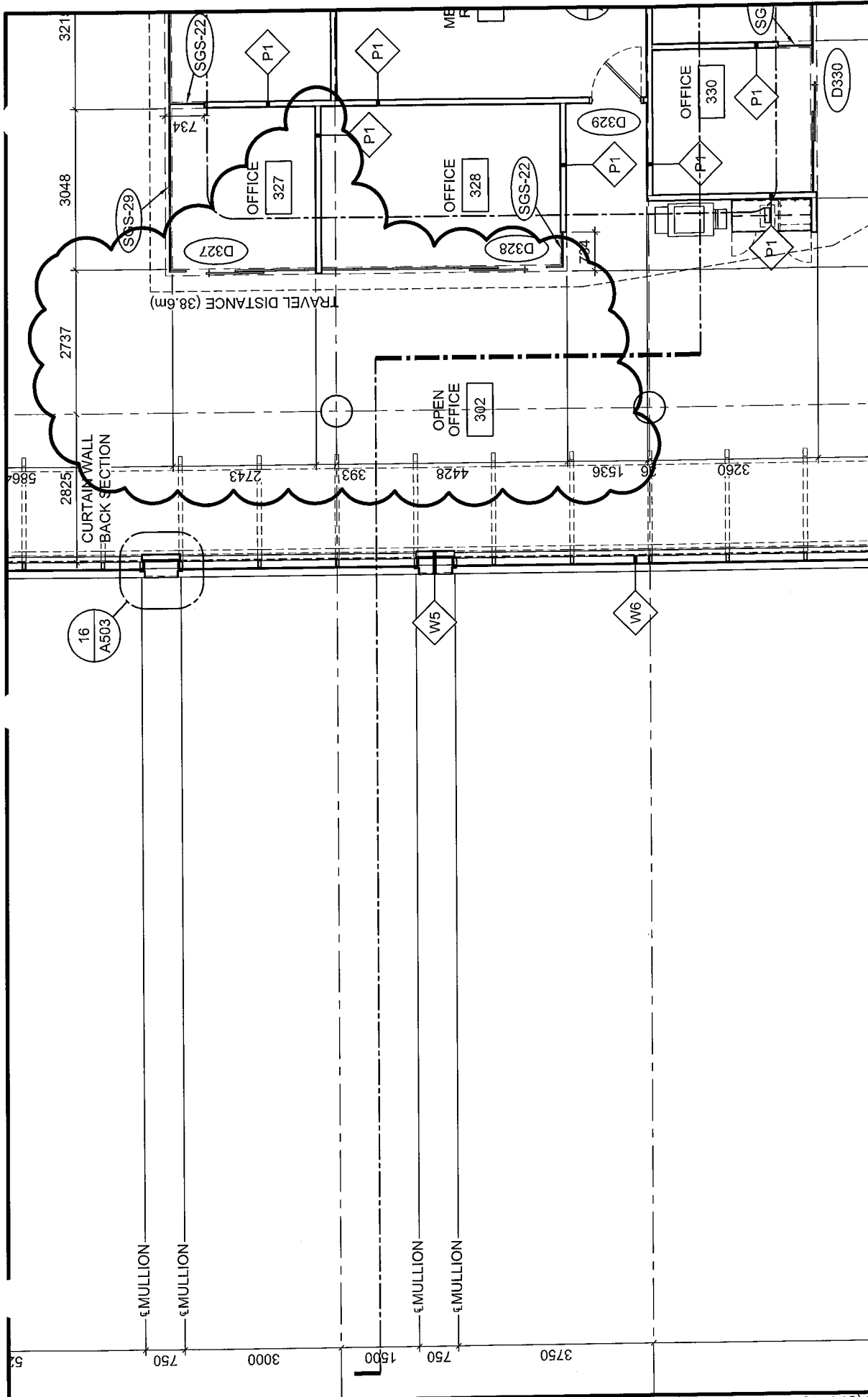
DATE: 03/16/2017  
SCALE: N/A  
DRAWN BY: JK  
JOB NO: 574-15  
DRAWING NO: ASK-120

PROJECT: TOMLINSON NEW BUILDING  
DRAWING TITLE: REFERENCE PARTIAL DETAIL 5/A901

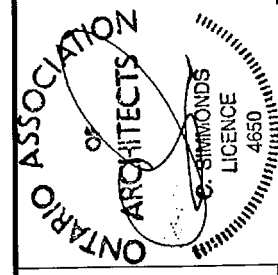


**Christopher Simmonds Architect**

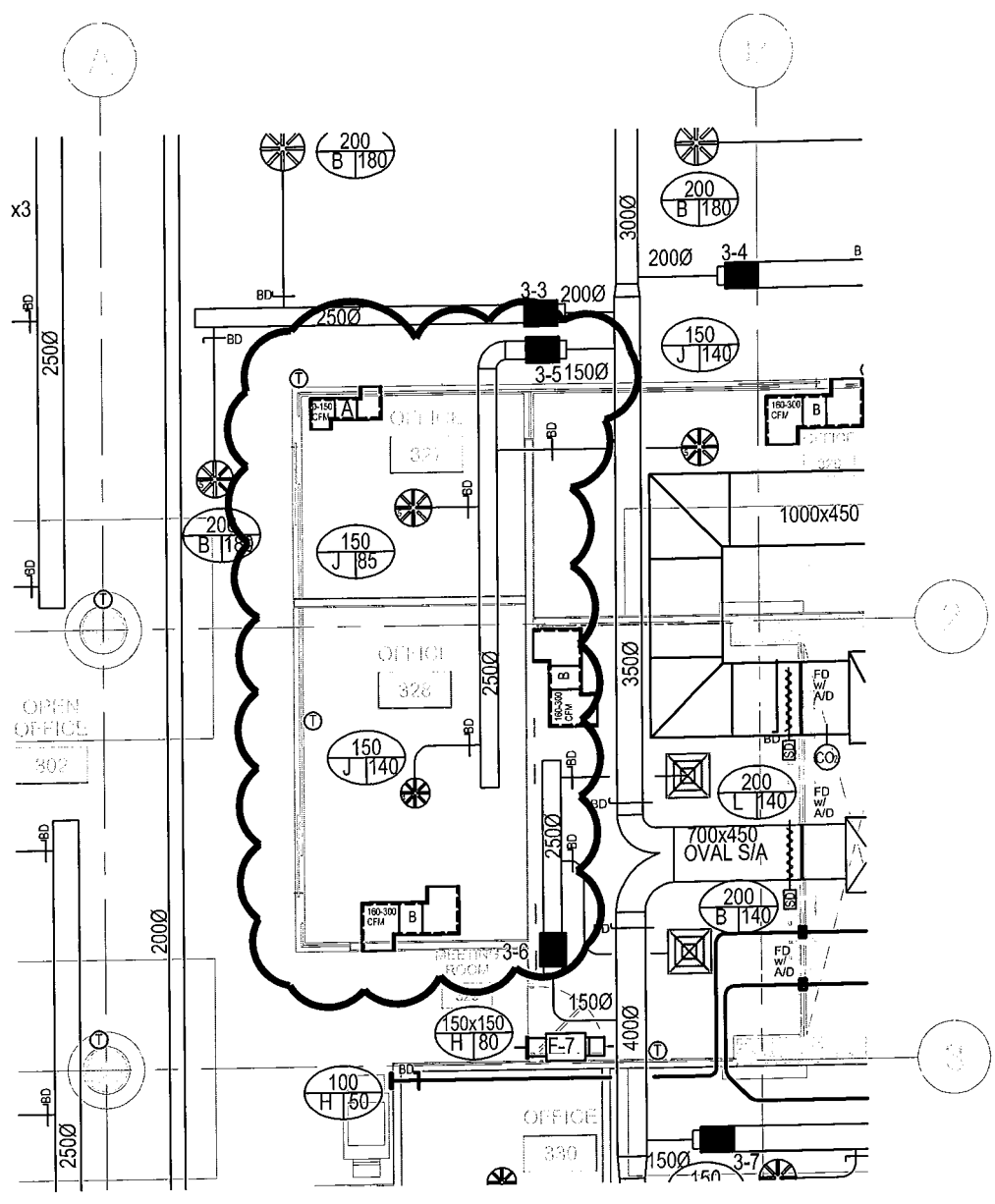
THE ANNEX / 46 CECILS ST. OTTAWA ON N1A 6R3  
913.587.7888 PHONE / 413.587.7528 FAX  
carchitect.com




PROJECT: <b>TOMLINSON NEW BUILDING</b>	DATE: 03/16/2017
	SCALE: 1:100
DRAWING TITLE: <b>REFERENCE PARTIAL PLAN 1/A103</b>	DRAWN BY: JK
	JOB No: 574-15
<b>DRAWING No: ASK-121</b>	



THE ANNEX / BUCCLUS ST. OTTAWA, ON K1R 4S3  
 613.567.7888 PHONE / 613.567.7525 FAX  
 csaarchitect.com



REFERENCE SI #039  
 REFER TO DRAWING M123

project <b>TOMLINSON          NEW BUILDING</b>  CITIGATE, OTTAWA	Designed By C.L.M. Date 2017/03/17	 <b>Optimum Mechanical          Solutions Inc.</b> 84 Bentley Avenue Ottawa, Ontario, K2E 6T9 Tel.: 613-228-9500 Fax: 613-228-9218 www.optimummech.com
	Drawn By C.L.M. Date 2017/03/17	
title <b>THIRD FLOOR          HVAC          REVISION</b>	Reviewed By T.N. Date 2017/03/17	Project no. <b>15-1570</b>
	Scale 1:100	Sketch no. <b>SKM-33</b>