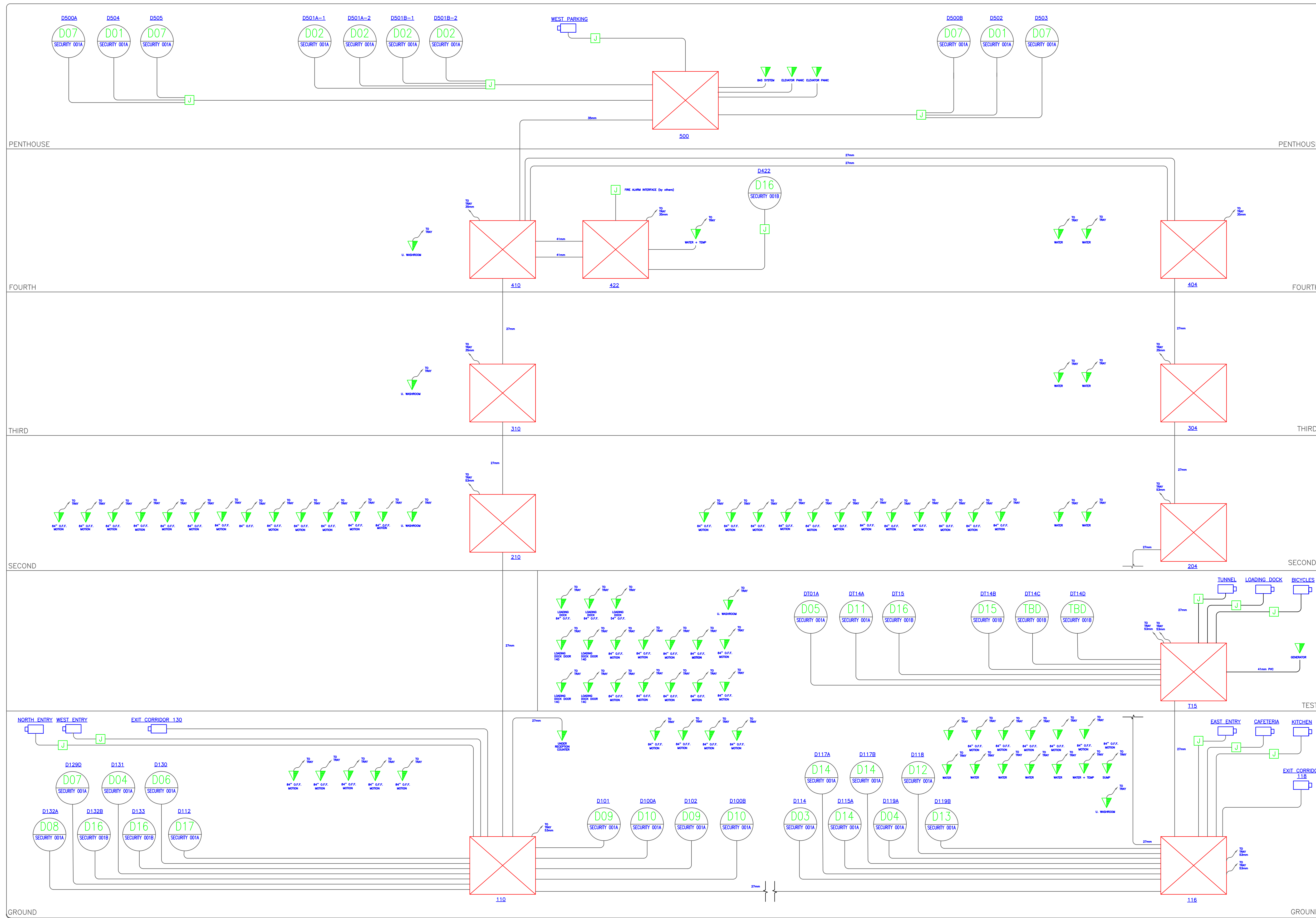


Notes:

1. THE COPYRIGHT OF THIS DRAWING IS VESTED IN NOOGA CONSULTING INC. AND IT MAY NOT BE REPRODUCED IN WHOLE OR PART OR USED FOR THE MANUFACTURE OF ANY ARTICLE WITHOUT THE EXPRESS PERMISSION OF THE COPYRIGHT HOLDERS.
2. WORK TO FIGURED DIMENSIONS ONLY.
3. THIS DRAWING IS TO BE READ IN CONJUNCTION WITH ALL RELEVANT ARCHITECTS, SERVICE ENGINEERS AND NOOGA CONSULTING DRAWINGS AND SPECIFICATIONS.



NORTH

SOUTH

- NOTES:
- WALL MOUNTED JUNCTION BOX.
 - CEILING MOUNTED JUNCTION BOX.
 - ONE CEILING MOUNTED BACKBOX C/W ONE 3/4" CONDUIT STUBBED INTO CEILING SPACE UNLESS SHOWN OTHERWISE. C/W TWO CONDUITS WITH W/CON BUSBARS AND FULL STRAPS FOR USE BY COMMUNICATIONS CONTRACTOR.
 - ONE WALL MOUNTED BACKBOX C/W ONE 3/4" CONDUIT STUBBED INTO CEILING SPACE UNLESS SHOWN OTHERWISE. C/W TWO CONDUITS WITH W/CON BUSBARS AND FULL STRAPS FOR USE BY COMMUNICATIONS CONTRACTOR.
 - FLOOR BOX C/W CSA 5-15R AND OPENING FOR USE BY COMMUNICATIONS CONTRACTOR.
 - SECURITY CONTROLLER LOCATION.
- ALL CONDUIT 21MM UNLESS NOTED OTHERWISE.
 - JUNCTION BOXES TO BE SIZED ACCORDING TO CONDUIT COUNT & DIAM.
 - IF NO CABLE TRAY IS AVAILABLE, EXTEND CONDUIT TO NEAREST CONTROLLER LOCATION.
 - ALL OVERHEAD OVERHEAD W/CON JUNCTION BOXES WILL ENTER FROM THE TOP, UNLESS IT'S BLANK CONDUIT, IN WHICH CASE IT WILL ENTER FROM THE BOTTOM.

5	TENDER-FINAL	RB	28/2/17
4	TENDER	RB	15/01/17
3	MODIFICATIONS	RB	12/12/16
2	MODIFICATIONS	RB	8/31/2016
1	PRELIMINARY	RB	8/23/2016

REV: DESCRIPTION: BY: DATE:
 STATUS: **FOR CONSTRUCTION**

NOOGA CONSULTING INC.

 671 Norwood Rd.
 RR#1 Salmon River
 Hectanooga, Nova Scotia
 514.984.2376
 www.noogaconsulting.com

CLIENT: **R.W Tomlinson Limited**

ARCHITECT: **CHRISTOPHER SIMMONDS
 THE ANNEX / 45 ECCLES ST.
 OTTAWA, ONT.**

SITE: **NEW OFFICE BUILDING
 OTTAWA, ONT.**

TITLE: **SECURITY CONDUIT RISER DIAGRAM**

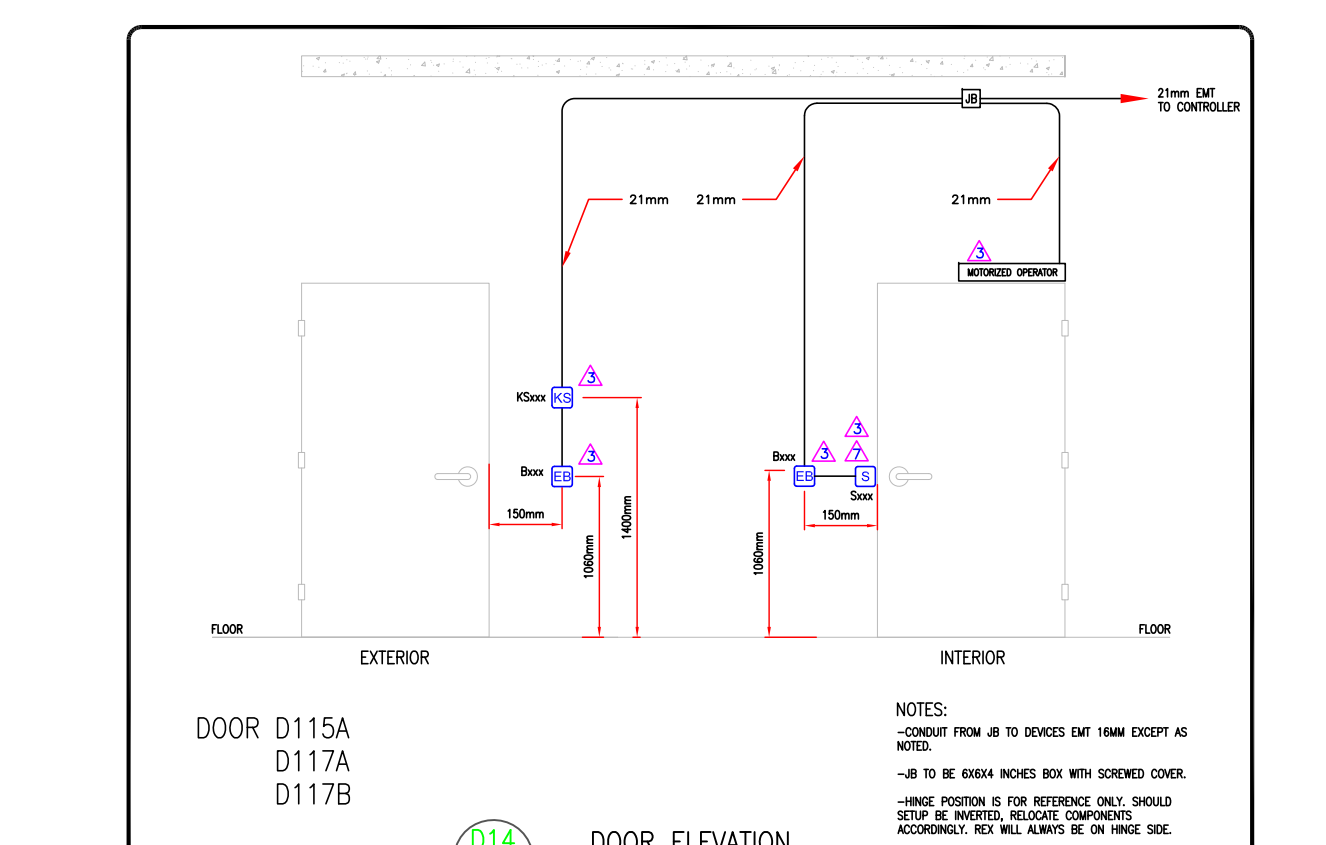
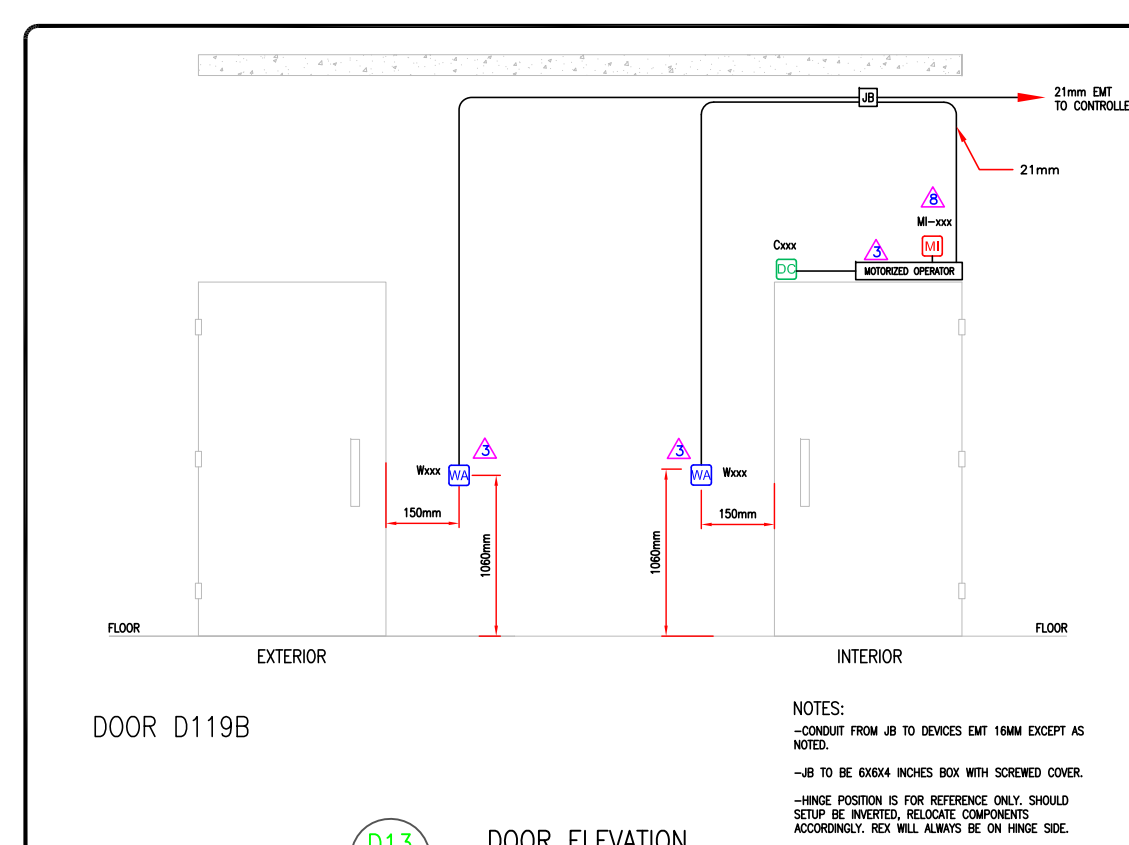
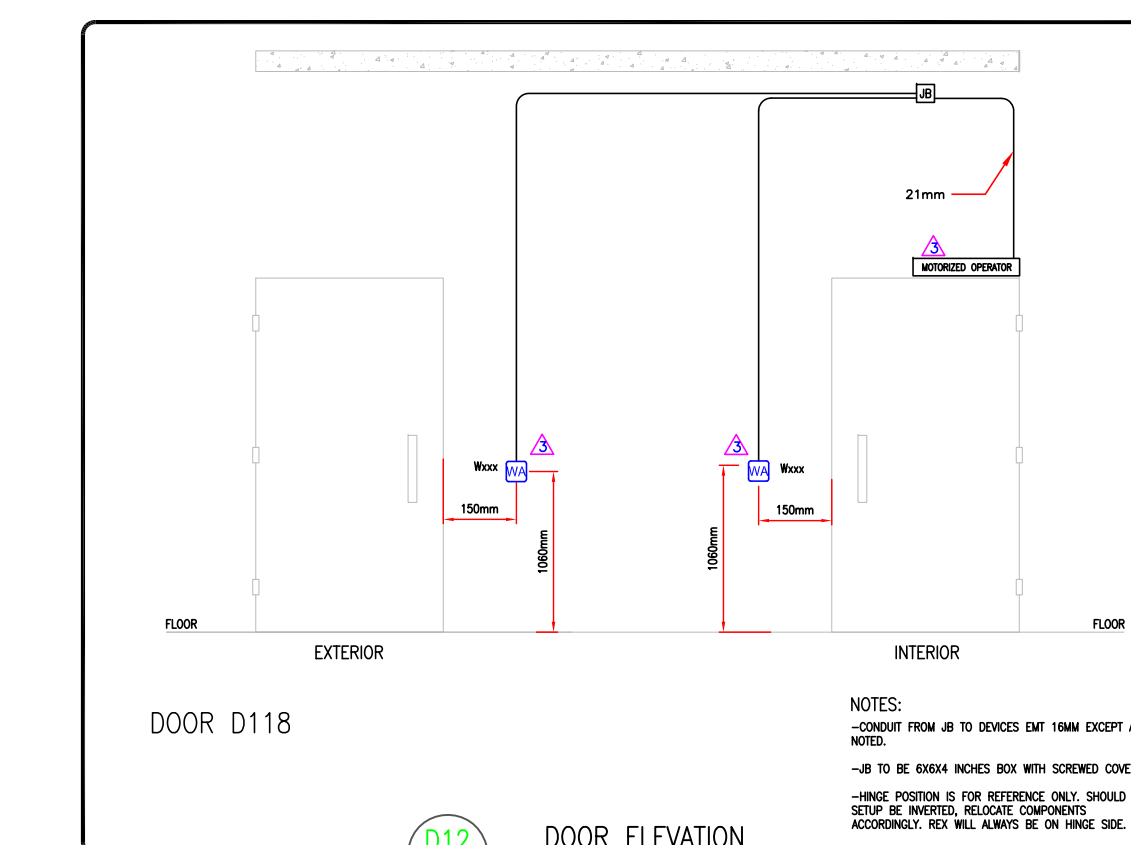
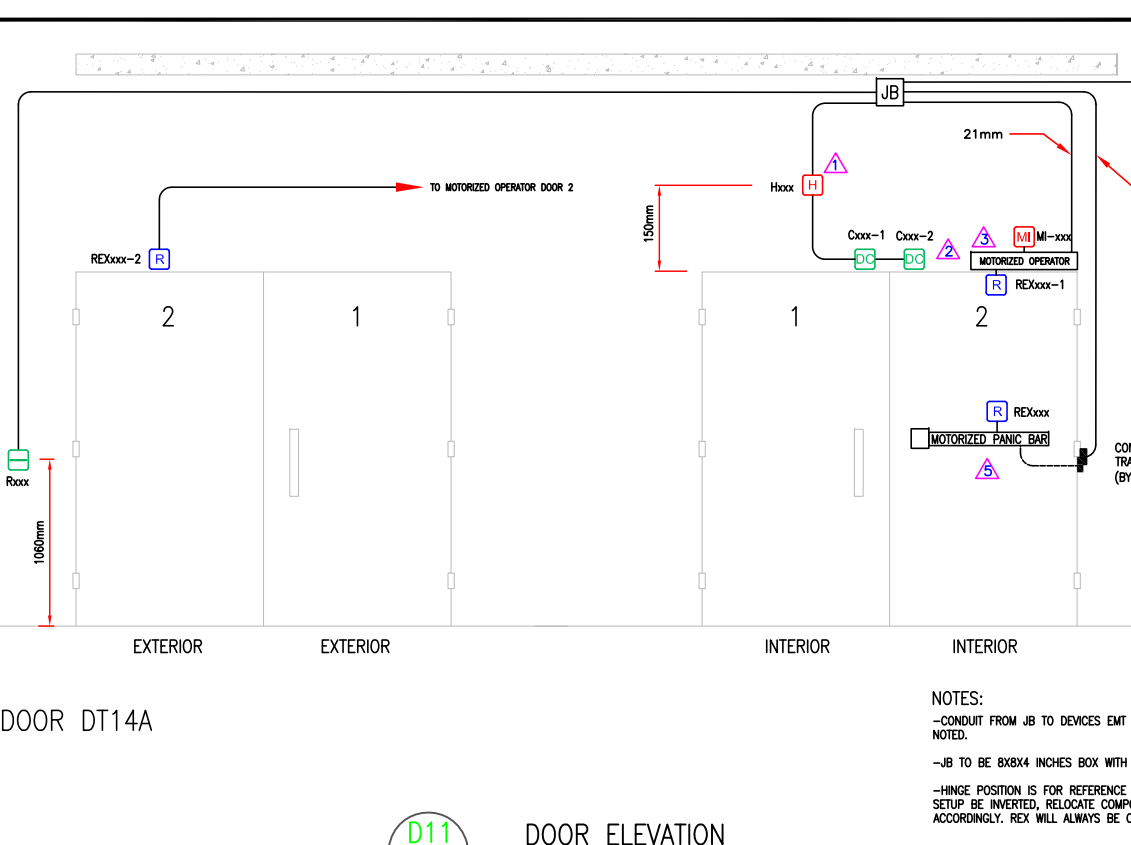
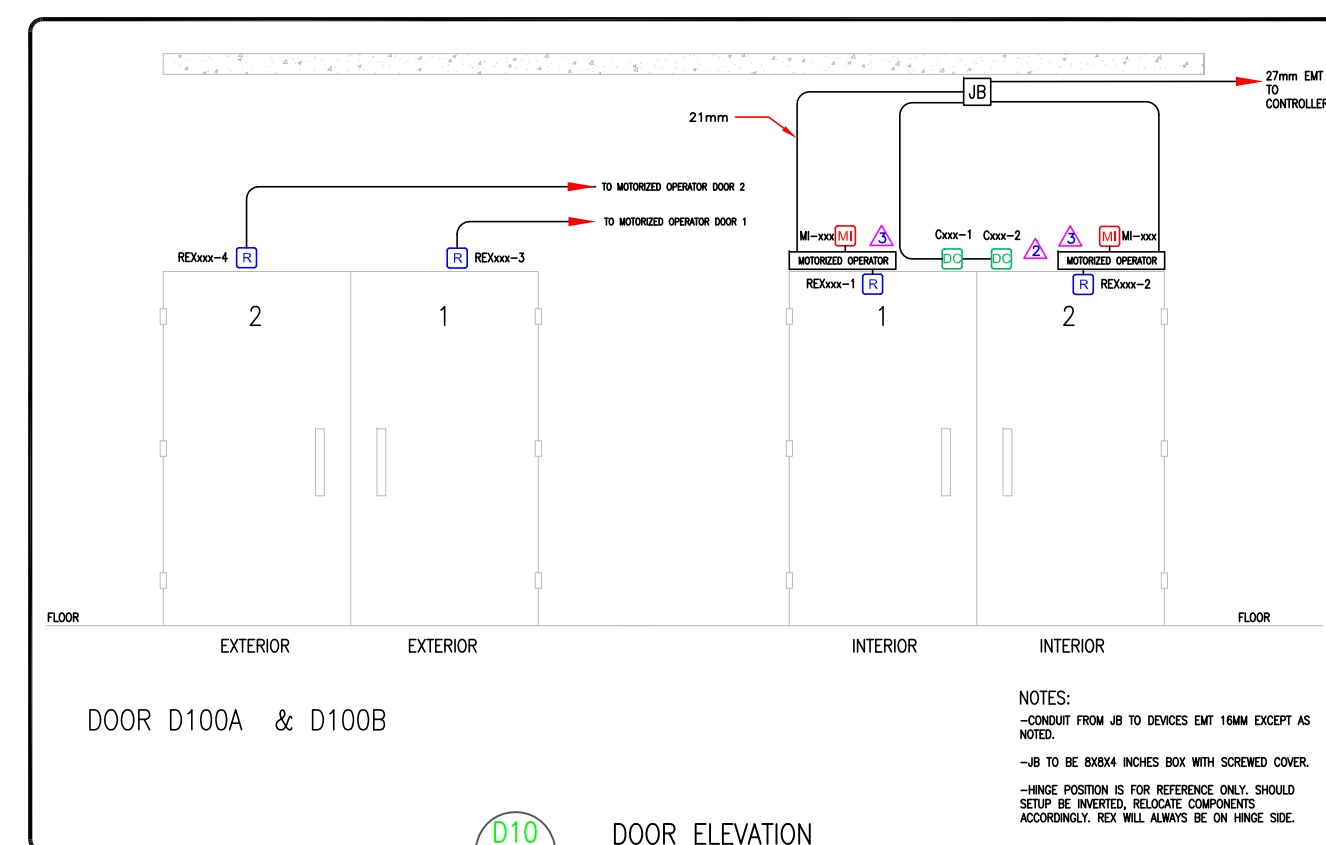
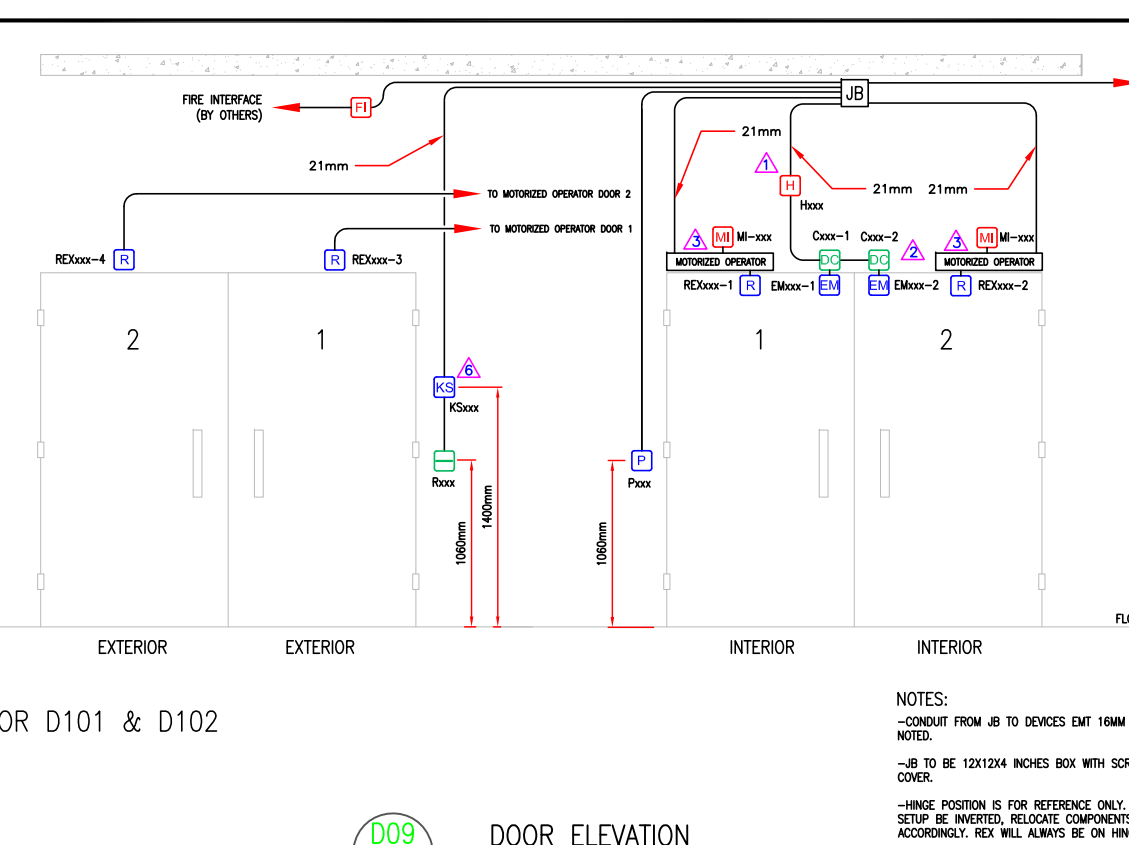
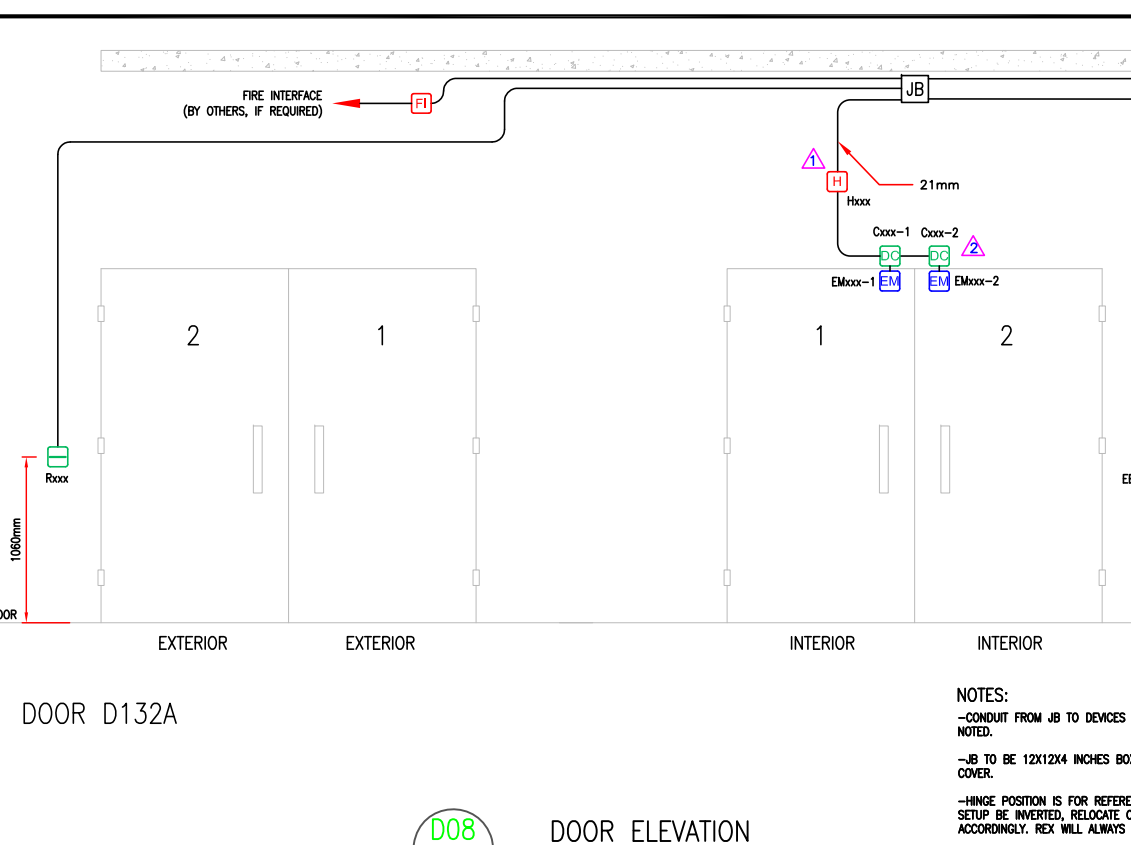
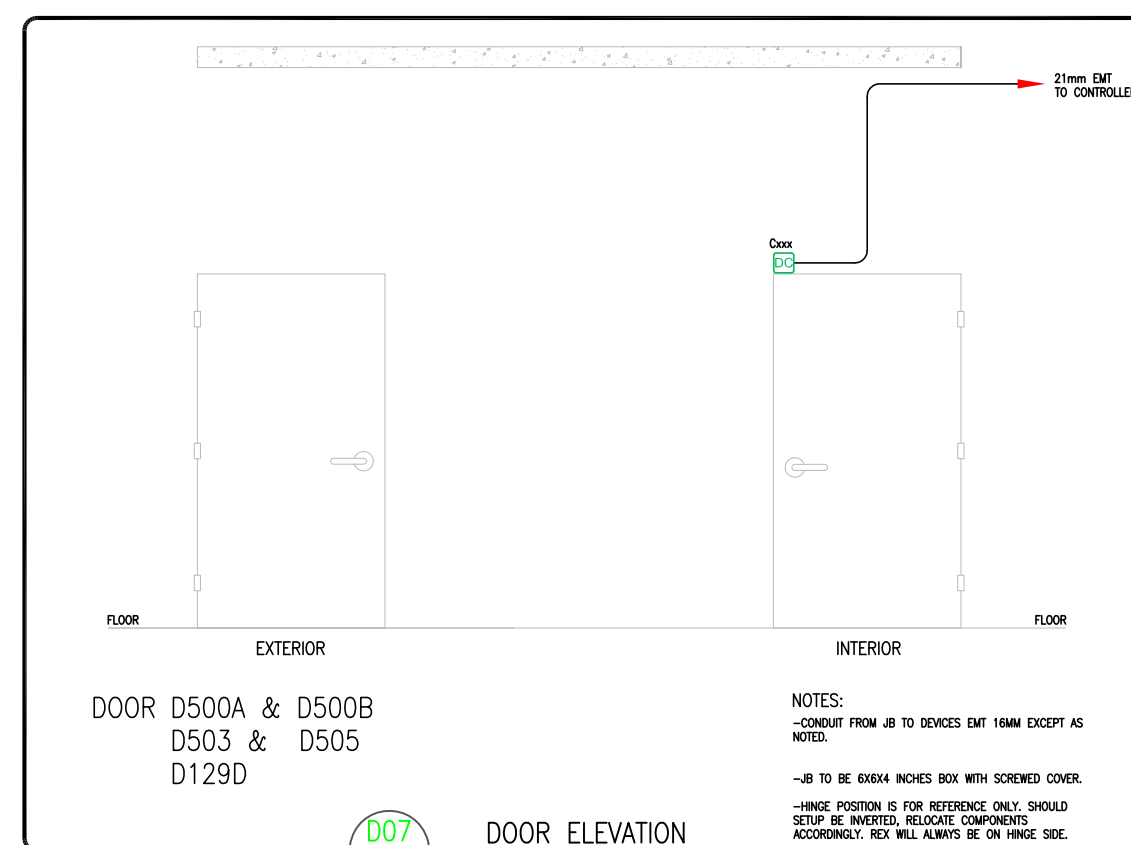
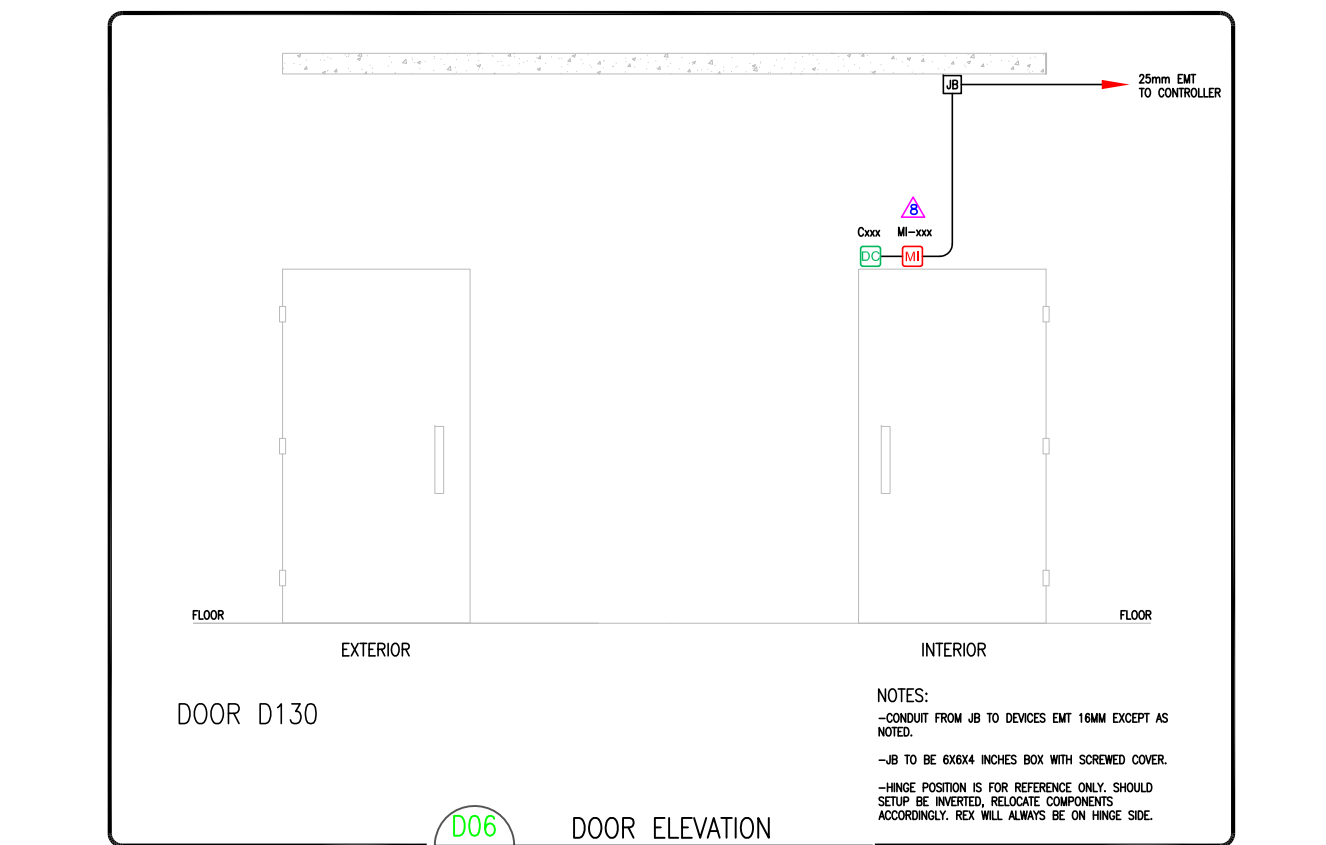
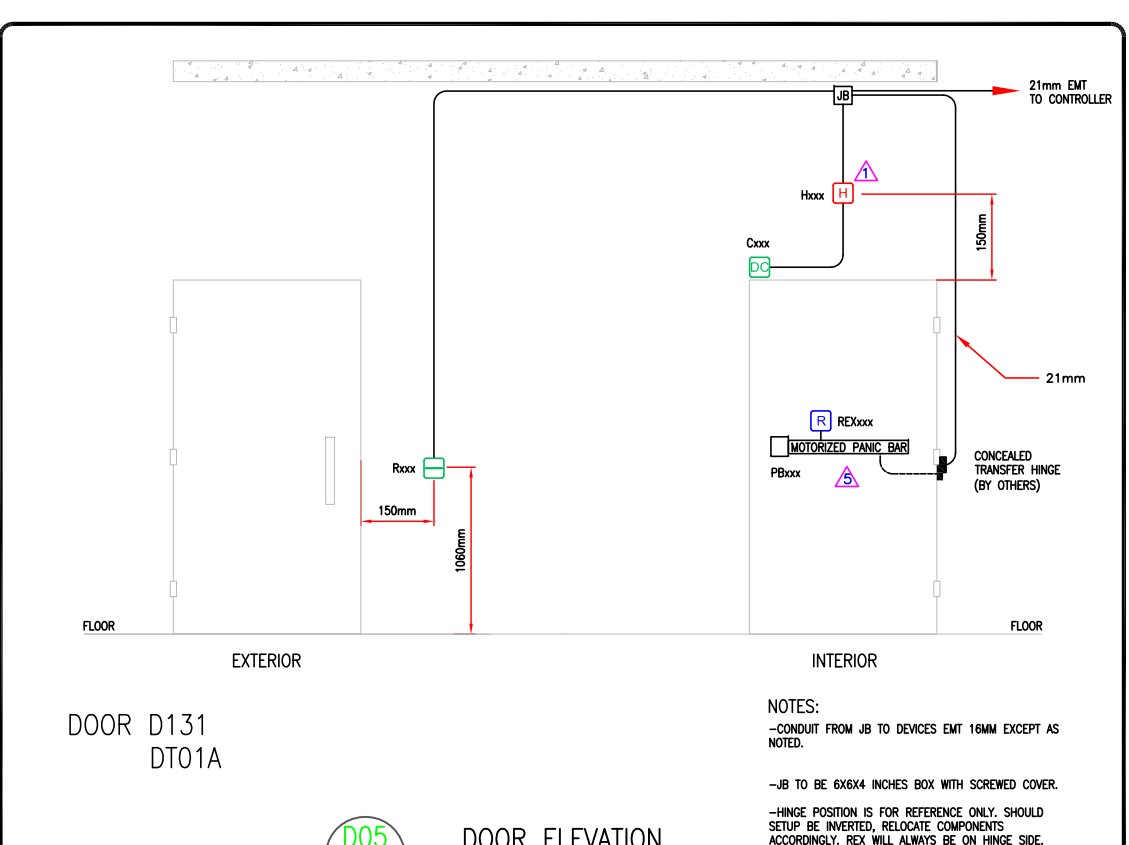
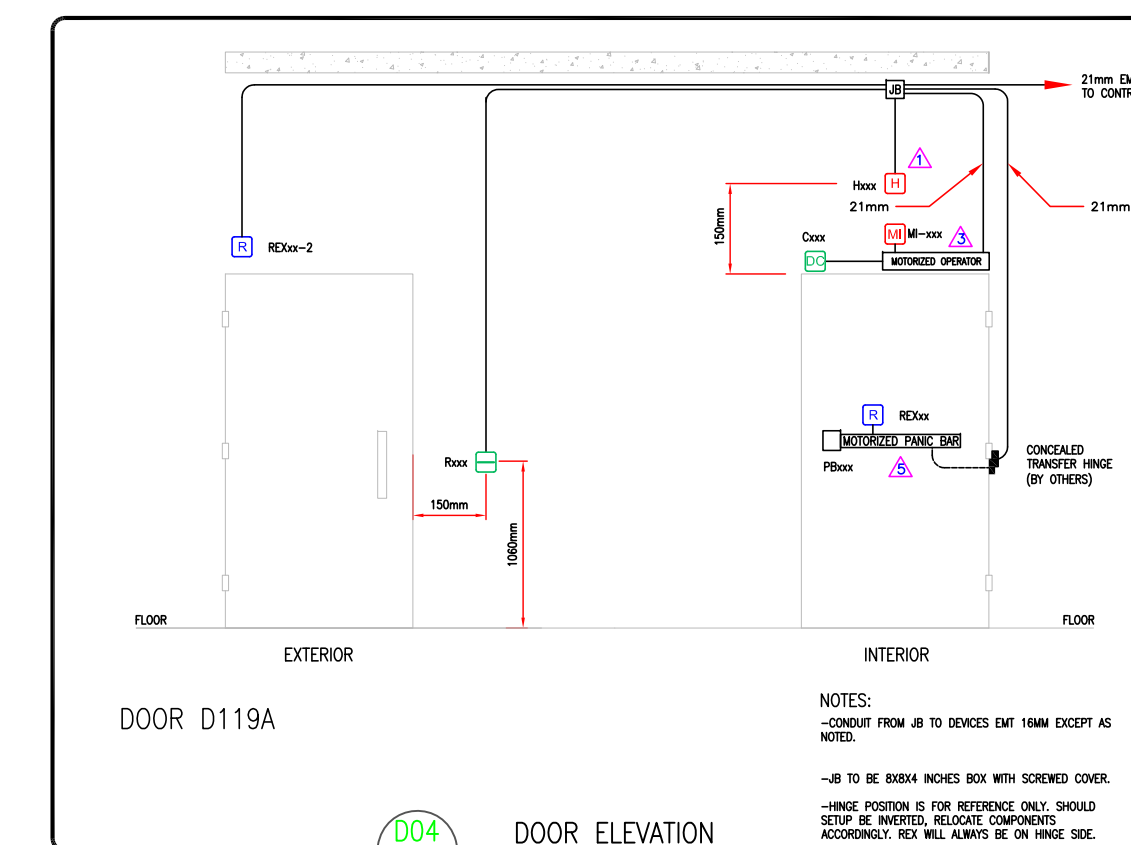
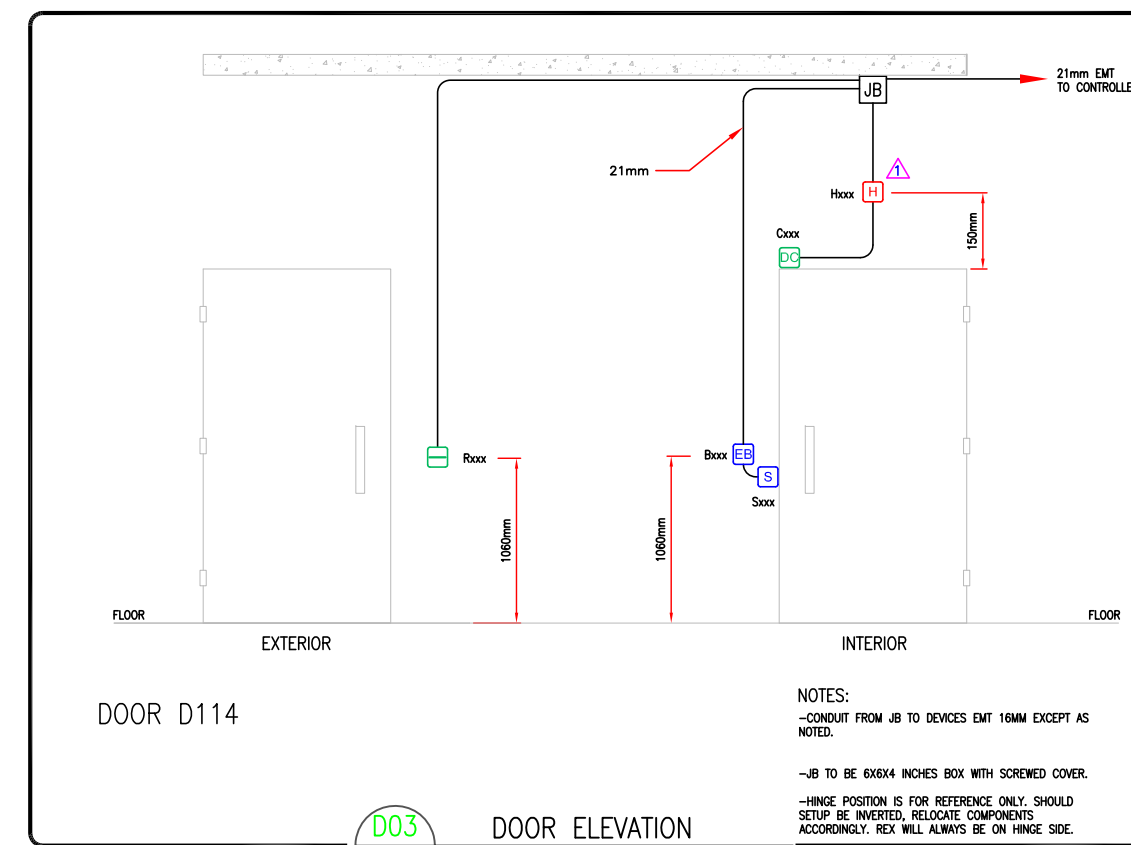
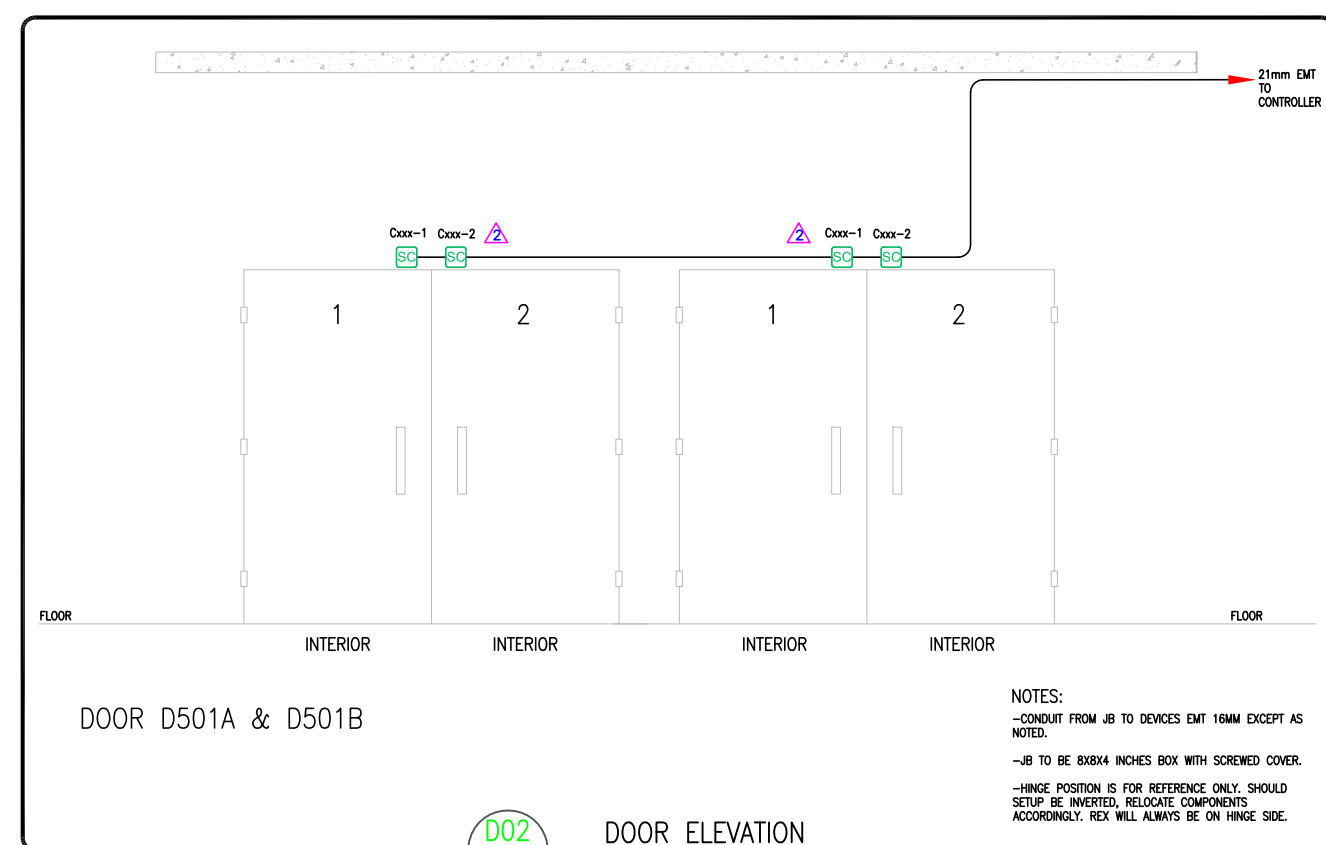
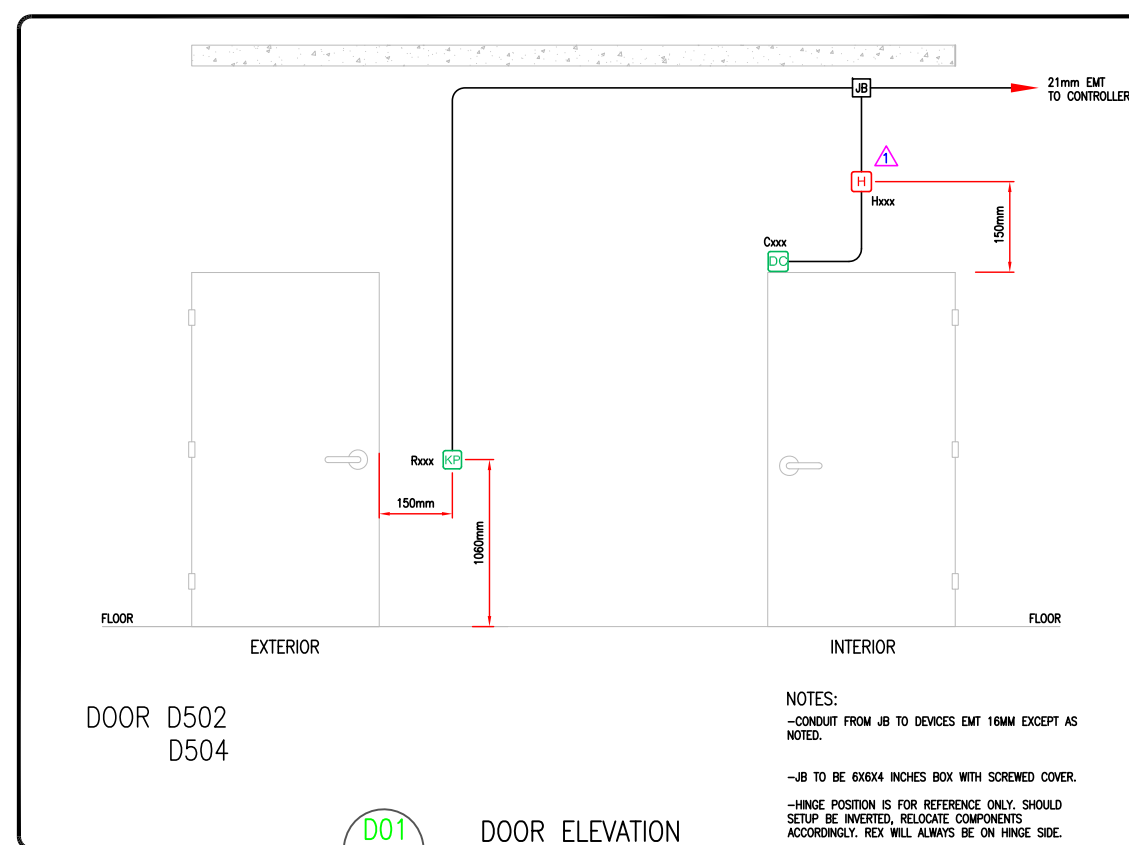
SCALE AT A1: NTS	DATE: 28/2/17	DRAWN: RB	CHECKED: GF
PROJECT NO: 25567	DRAWING NO: Security 000	REVISION: 5	

Notes:

1. THE COPYRIGHT OF THIS DRAWING IS VESTED IN NOOGA CONSULTING INC. AND IT MAY NOT BE REPRODUCED IN WHOLE OR PART OR USED FOR THE MANUFACTURE OF ANY ARTICLE WITHOUT THE EXPRESS PERMISSION OF THE COPYRIGHT HOLDERS.

2. WORK TO FIGURED DIMENSIONS ONLY.

3. THIS DRAWING IS TO BE READ IN CONJUNCTION WITH ALL RELEVANT ARCHITECTS, SERVICE ENGINEER'S AND NOOGA'S DRAWINGS AND SPECIFICATIONS.



DOOR TYPE D01	D502 D504	DOOR TYPE D08	D132A
DOOR TYPE D02	D501A D501B	DOOR TYPE D09	D101 D102
DOOR TYPE D03	D114	DOOR TYPE D10	D100A D100B
DOOR TYPE D04	D119A	DOOR TYPE D11	DT14A
DOOR TYPE D05	D131 DT01A	DOOR TYPE D12	D118
DOOR TYPE D06	D112	DOOR TYPE D13	D119B
DOOR TYPE D07	D129D D130 D500A D500B D503 D505	DOOR TYPE D14	D115A D117A D117B

DEVICES LEGEND	
	PROX CARD READER
	LONG RANGE WIEGAND READER
	DOOR CONTACT, DOUBLE
	DOOR CONTACT, SINGLE
	DOOR CONTACT, HEAVY DUTY
	UTILITY CONTACT
	MOTION DETECTOR
	WATER DETECTOR
	H&D TEMPERATURE DETECTOR
	SECURITY KEYPAD
	SECURITY CAMERA, FIXED
	STROBE
	GREEN
	LOCAL SOUNDER
	FIRE INTERFACE (DPT)
	CENTER HORN HORIZONTALLY ACROSS DOOR WIDTH
	CONTACTS HOOKUP AS PER ILLC COMMERCIAL STANDART
	AUTOMATIC DOOR OPERATOR (BY OTHERS)
	ELECTRIFIED MORTISE LOCK, HINGE & HARNESSES BY OTHERS
	ELECTRIFIED PANIC BAR CW RETRACTABLE LATCH, REX CONTACTS, HINGE & HARNESSES, BY OTHERS
	TAMPER SWITCH UNDER PLATE ON 24H INTRUSION ZONE
	STRIKE CW LATCH MONITOR SWITCH
	MOTOR INTERFACE, FUTURE USE - WIRE INTERFACE TO JB ONLY
	ELECTRIC DOOR STRIKE
	ELECTROMAGNET
	EMERGENCY PULL STATION
	EXIT BUTTON
	HANDICAPPED BUTTON
	REX (required to H&B) DEVICE
	LOCKDOWN BUTTON
	PANIC BAR
	DELAYED EGRESS TIMER (D-15)
	ELECTRIFIED MORTISE LOCK
	KEY SWITCH
	WAVE EXIT BUTTON
	HORN
	BELL
	PANIC BUTTON
	MOTOR INTERFACE

5	TENDER-FINAL	RB	28/2/17
4	TENDER	RB	15/01/17
3	MODIFICATIONS	RB	12/12/16
2	MODIFICATIONS	RB	8/31/2016
1	PRELIMINARY	RB	8/23/2016

REVISION: **FOR CONSTRUCTION**

NOOGA CONSULTING INC.

 671 Norwood Rd.
 RR#1 Salmon River
 Hectanooga, Nova Scotia
 514.984.2376
www.noogaconsulting.com

CLIENT: **R.W Tomlinson Limited**

ARCHITECT: **CHRISTOPHER SIMMONDS
THE ANNEX / 45 ECCLES ST.
OTTAWA, ONT.**

SITE: **NEW OFFICE BUILDING
OTTAWA, ONT.**

TITLE: **DOOR DETAILS 1 / 2**

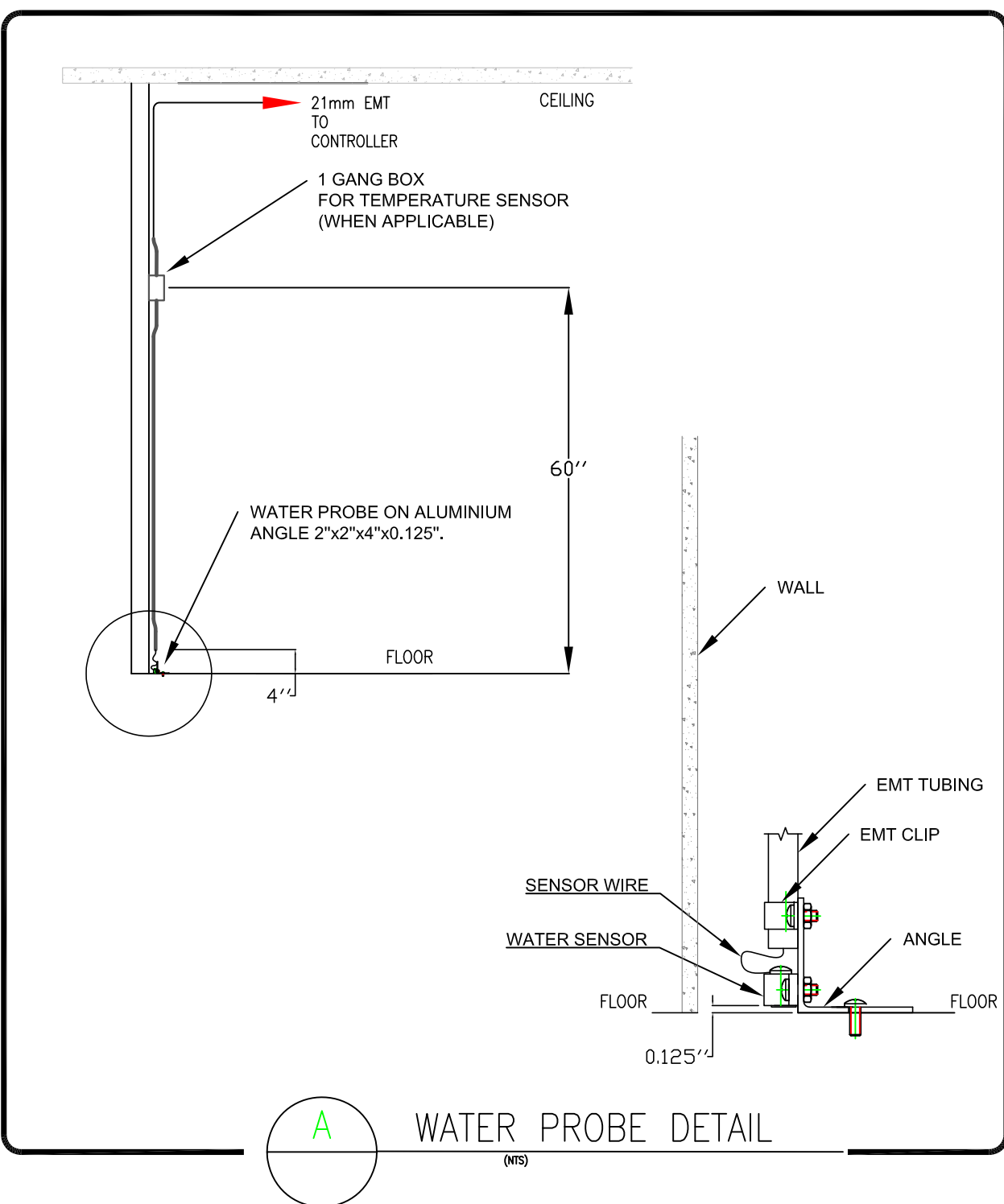
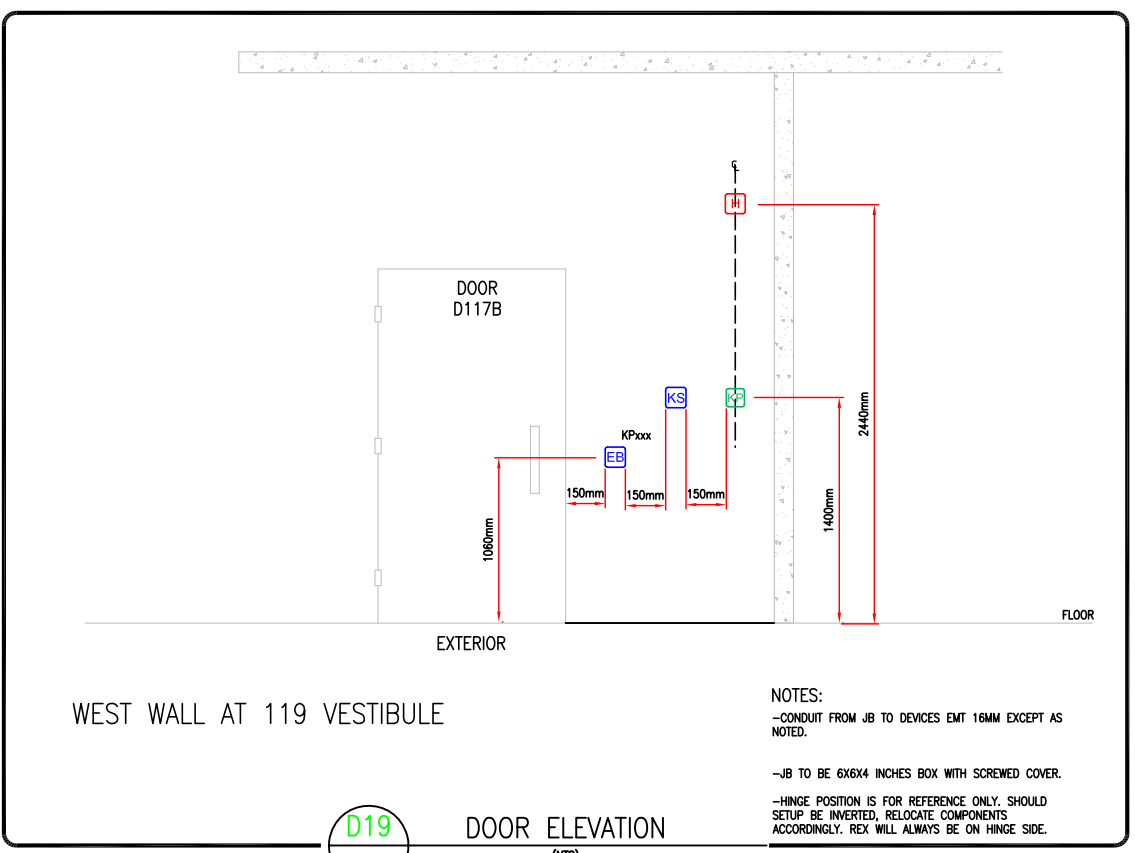
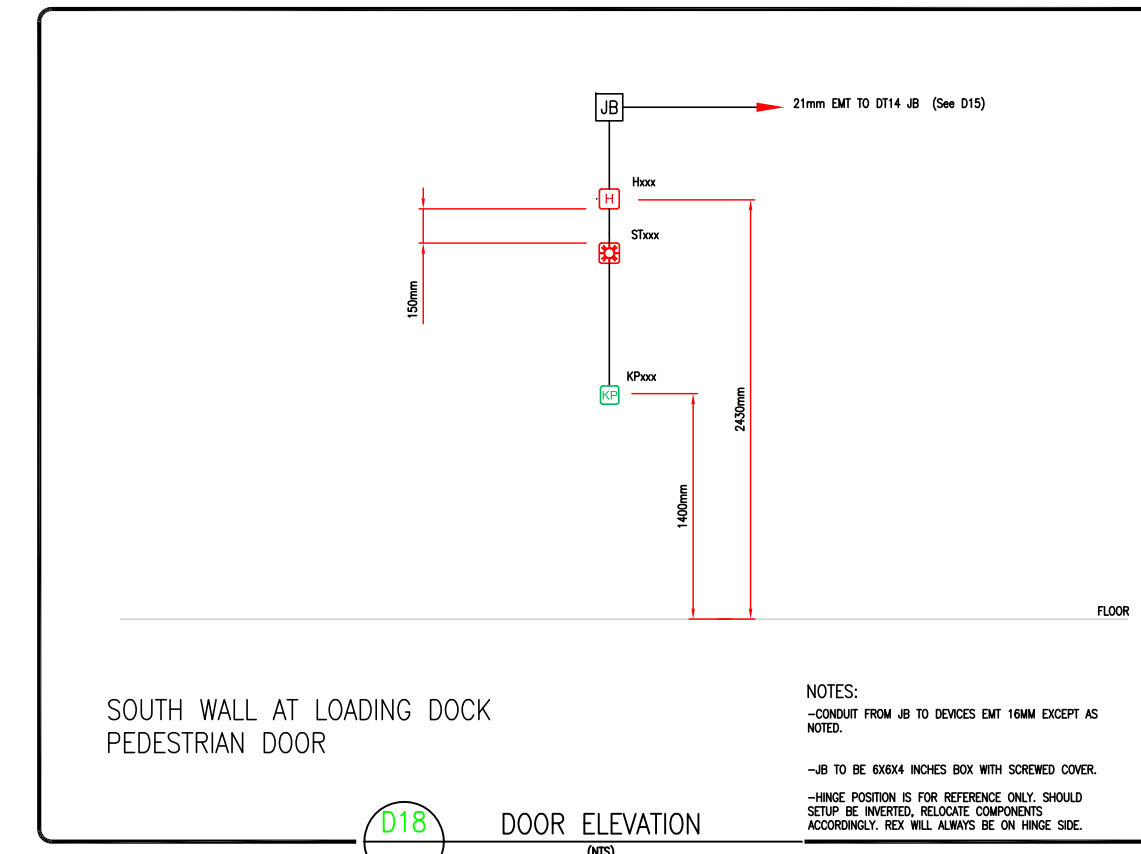
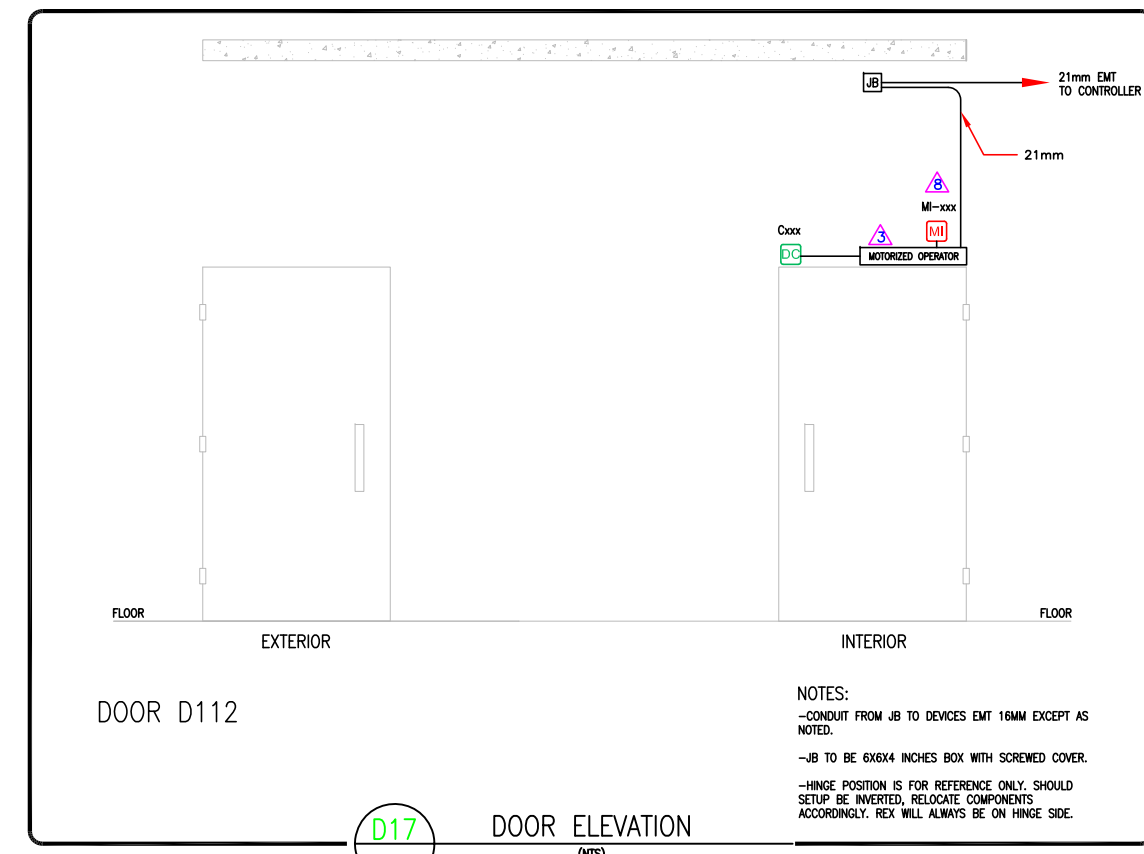
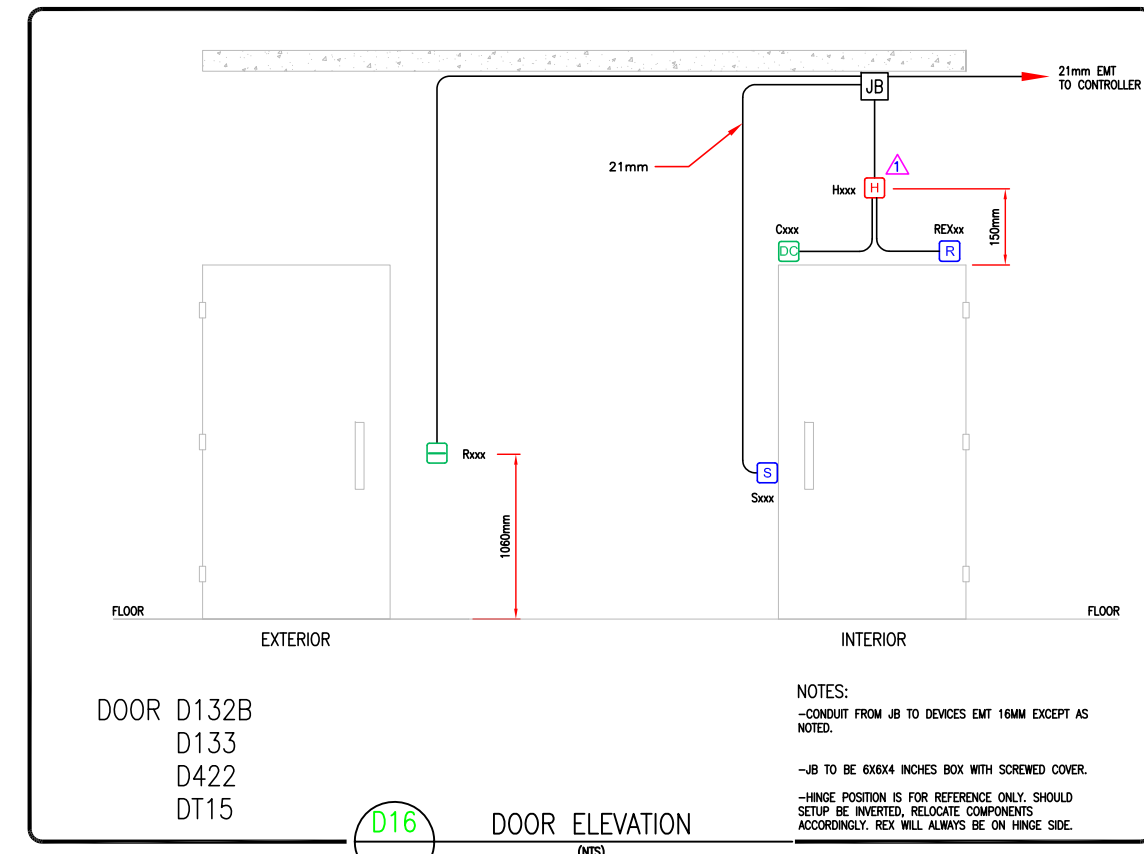
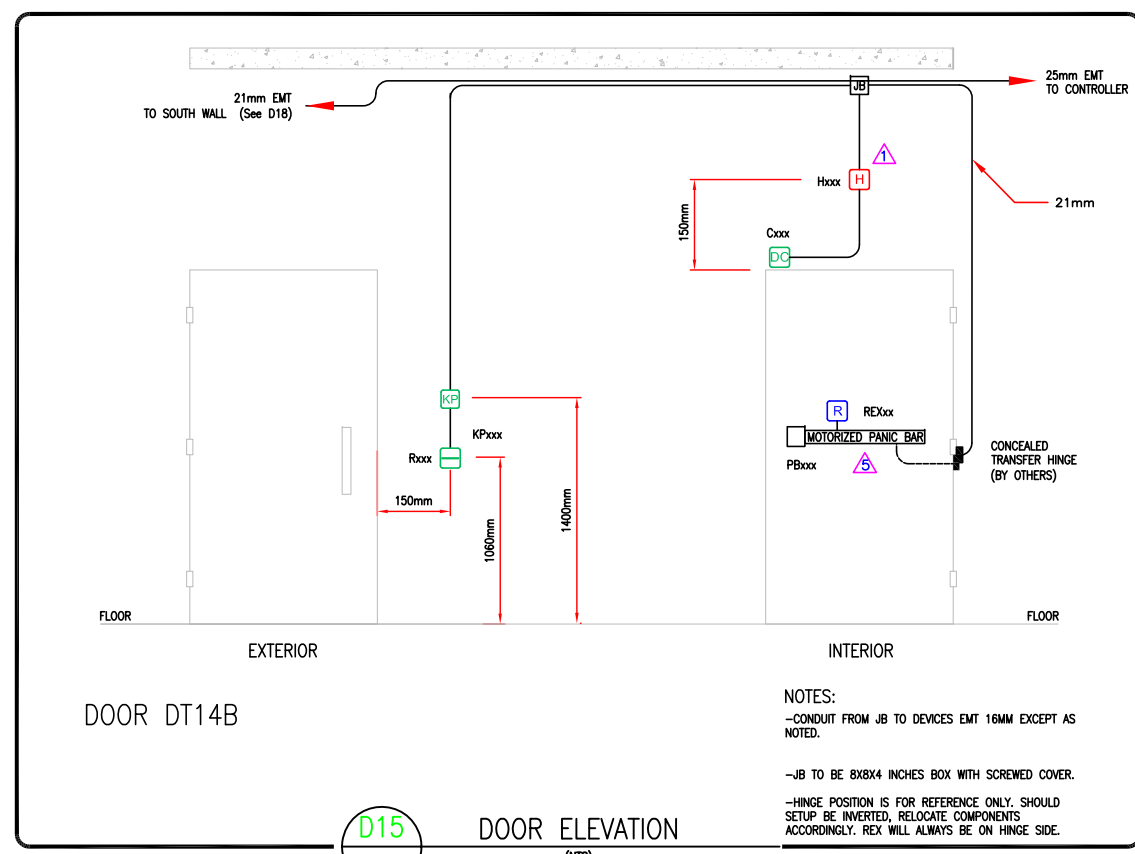
SCALE AT A1:	DATE:	DRAWN:	CHECKED:
NTS	28/2/17	RB	GF
PROJECT NO:	DRAWING NO:	REVISION:	
25567	Security 001A	5	

Notes:

1. THE COPYRIGHT OF THIS DRAWING IS VESTED IN NOOGA CONSULTING INC. AND IT MAY NOT BE REPRODUCED IN WHOLE OR PART OR USED FOR THE MANUFACTURE OF ANY ARTICLE WITHOUT THE EXPRESS PERMISSION OF THE COPYRIGHT HOLDERS.

2. WORK TO FIGURED DIMENSIONS ONLY.

3. THIS DRAWING IS TO BE READ IN CONJUNCTION WITH ALL RELEVANT ARCHITECTS, SERVICE ENGINEER'S AND NOOGA'S DRAWINGS AND SPECIFICATIONS.



DOOR TYPE D15	DT14B
DOOR TYPE D16	D132B D133 D422 DT15
DOOR TYPE D17	D112

DEVICES LEGEND	
PROX CARD READER	ELECTRIC DOOR STRIKE
LONG RANGE WIGGAND READER	ELECTROMAGNET
DOOR CONTACT, DOUBLE	EMERGENCY PULL STATION
DOOR CONTACT, SINGLE	EXIT BUTTON
DOOR CONTACT, HEAVY DUTY	HANDICAPPED BUTTON
UTILITY CONTACT	REX (request to exit) DEVICE
MOTION DETECTOR	LOCKDOWN BUTTON
WATER DETECTOR	PANIC BAR
HOLD TEMPERATURE DETECTOR	DELAYED EGRESS TIMER (3-15)
SECURITY KEYPAD	ELECTRIFIED MORTISE LOCK
SECURITY CAMERA, FIXED	KEYSWITCH
STROBE	WAVE EXIT BUTTON
SIREN	HORN
LOCAL SOUNDER	BELL
FIRE INTERFACE (DIP)	PANIC BUTTON
CENTER HORN HORIZONTALLY ACROSS DOOR WIDTH	MOTOR INTERFACE
CONTACTS HOOKUP AS PER ULC COMMERCIAL STANDART	
AUTOMATIC DOOR OPERATOR (BY OTHERS)	
ELECTRIFIED MORTISE LOCK, HINGE & HARNESSES BY OTHERS	
ELECTRIFIED PANIC BAR C/W RETRACTABLE LATCH, REA CONTACTS, HINGE & HARNESSES, BY OTHERS	
TAMPER SWITCH UNDER PLATE ON 24V INTRUSION ZONE	
STRIKE C/W LATCH MONITOR SWITCH	
MOTOR INTERFACE, FUTURE USE - WIRE INTERFACE TO JB ONLY	

5	TENDER-FINAL	RB	28/2/17
4	TENDER	RB	15/01/17
3	MODIFICATIONS	RB	12/12/16
2	MODIFICATIONS	RB	8/31/2016
1	PRELIMINARY	RB	8/23/2016
REV:	DESCRIPTION:	BY:	DATE:

STATUS: **FOR CONSTRUCTION**

NOOGA CONSULTING INC.
 671 Norwood Rd.
 RR#1 Salmon River
 Hectanooga, Nova Scotia
 514.984.2376
www.noogaconsulting.com

CLIENT: **R.W Tomlinson Limited**

ARCHITECT: **CHRISTOPHER SIMMONDS**
 THE ANNEX / 45 ECCLES ST.
 OTTAWA, ONT.

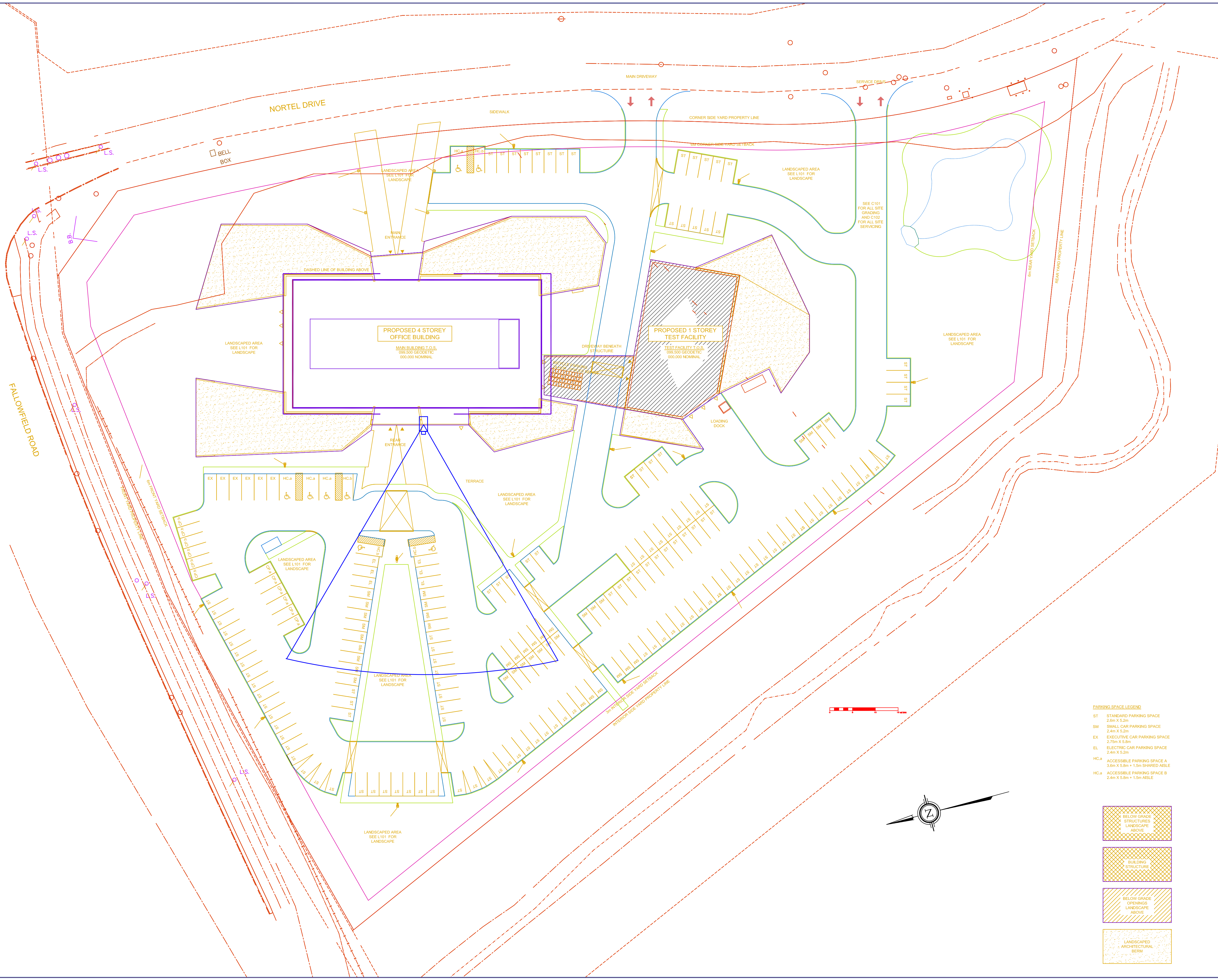
SITE: **NEW OFFICE BUILDING**
OTTAWA, ONT.

TITLE: **DOOR DETAILS 2 / 2**

SCALE AT A1:	DATE:	DRAWN:	CHECKED:
NTS	28/2/17	RB	GF
PROJECT NO:	DRAWING NO:	REVISION:	
25567	Security 001B	5	

Notes:

1. THE COPYRIGHT OF THIS DRAWING IS VESTED IN NOOGA CONSULTING INC. AND IT MAY NOT BE REPRODUCED IN WHOLE OR PART OR USED FOR THE MANUFACTURE OF ANY ARTICLE WITHOUT THE EXPRESS PERMISSION OF THE COPYRIGHT HOLDERS.
2. WORK TO FIGURED DIMENSIONS ONLY.
3. THIS DRAWING IS TO BE READ IN CONJUNCTION WITH ALL RELEVANT ARCHITECTS, SERVICE ENGINEER'S AND NOOGA CONSULTING DRAWINGS AND SPECIFICATIONS.



5	TENDER-FINAL	RB	28/2/17
4	TENDER	RB	15/01/17
3	DESIGN_MODIFICATIONS	RB	12/12/16
2	DESIGN_MODIFICATIONS	RB	8/31/16
1	PRELIMINARY	RB	8/23/16
REV:	DESCRIPTION:	BY:	DATE:
FOR CONSTRUCTION			

NOOGA CONSULTING INC.
 671 Norwood Rd.
 RR#1 Salmon River
 Hectanooga, Nova Scotia
 514.984.2376
www.noogaconsulting.com

CLIENT: **R.W Tomlinson Limited**

ARCHITECT: **CHRISTOPHER SIMMONDS**
 THE ANNEX / 45 ECCLES ST.
 OTTAWA, ONT.

SITE: **NEW OFFICE BUILDING**
OTTAWA, ONT.

TITLE: **GROUNDS**

SCALE AT A1:	DATE:	DRAWN:	CHECKED:
NTS	28/2/17	RB	GF
PROJECT NO:	DRAWING NO:	REVISION:	
25567	Security 002	5	

- PARKING SPACE LEGEND**
- ST STANDARD PARKING SPACE
2.6m X 5.2m
 - SM SMALL CAR PARKING SPACE
2.4m X 5.2m
 - EX EXECUTIVE CAR PARKING SPACE
2.75m X 5.8m
 - EL ELECTRIC CAR PARKING SPACE
2.4m X 5.2m
 - HC.a ACCESSIBLE PARKING SPACE A
3.6m X 5.8m + 1.5m SHARED ASBLE
 - HC.b ACCESSIBLE PARKING SPACE B
2.4m X 5.8m + 1.5m ASBLE
- LANDSCAPING LEGEND**
- BELOW GRADE STRUCTURES LANDSCAPE ABOVE
 - BUILDING STRUCTURE
 - BELOW GRADE OPENINGS LANDSCAPE ABOVE
 - LANDSCAPED ARCHITECTURAL BERM

