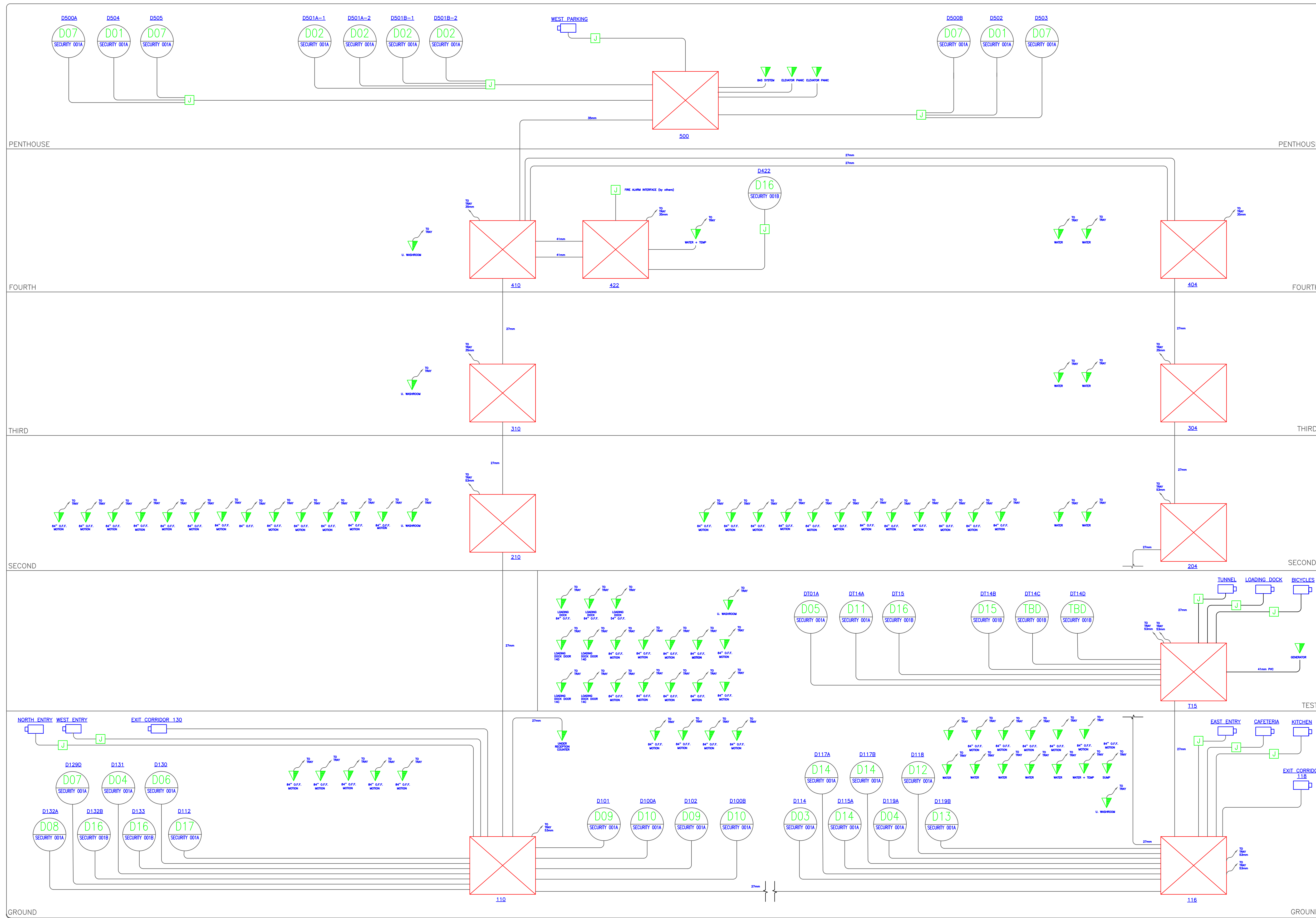


Notes:

1. THE COPYRIGHT OF THIS DRAWING IS VESTED IN NOOGA CONSULTING INC. AND IT MAY NOT BE REPRODUCED IN WHOLE OR PART OR USED FOR THE MANUFACTURE OF ANY ARTICLE WITHOUT THE EXPRESS PERMISSION OF THE COPYRIGHT HOLDERS.
2. WORK TO FIGURED DIMENSIONS ONLY.
3. THIS DRAWING IS TO BE READ IN CONJUNCTION WITH ALL RELEVANT ARCHITECTS, SERVICE ENGINEERS AND NOOGA CONSULTING DRAWINGS AND SPECIFICATIONS.



5	TENDER-FINAL	RB	28/2/17
4	TENDER	RB	15/01/17
3	MODIFICATIONS	RB	12/12/16
2	MODIFICATIONS	RB	8/31/2016
1	PRELIMINARY	RB	8/23/2016

REV: DESCRIPTION: BY: DATE:  
 STATUS: **FOR CONSTRUCTION**

**NOOGA CONSULTING INC.**  
  
 671 Norwood Rd.  
 RR#1 Salmon River  
 Hectanooga, Nova Scotia  
 514.984.2376  
[www.noogaconsulting.com](http://www.noogaconsulting.com)

CLIENT: **R.W Tomlinson Limited**

ARCHITECT: **CHRISTOPHER SIMMONDS  
 THE ANNEX / 45 ECCLES ST.  
 OTTAWA, ONT.**

SITE: **NEW OFFICE BUILDING  
 OTTAWA, ONT.**

TITLE: **SECURITY CONDUIT RISER DIAGRAM**

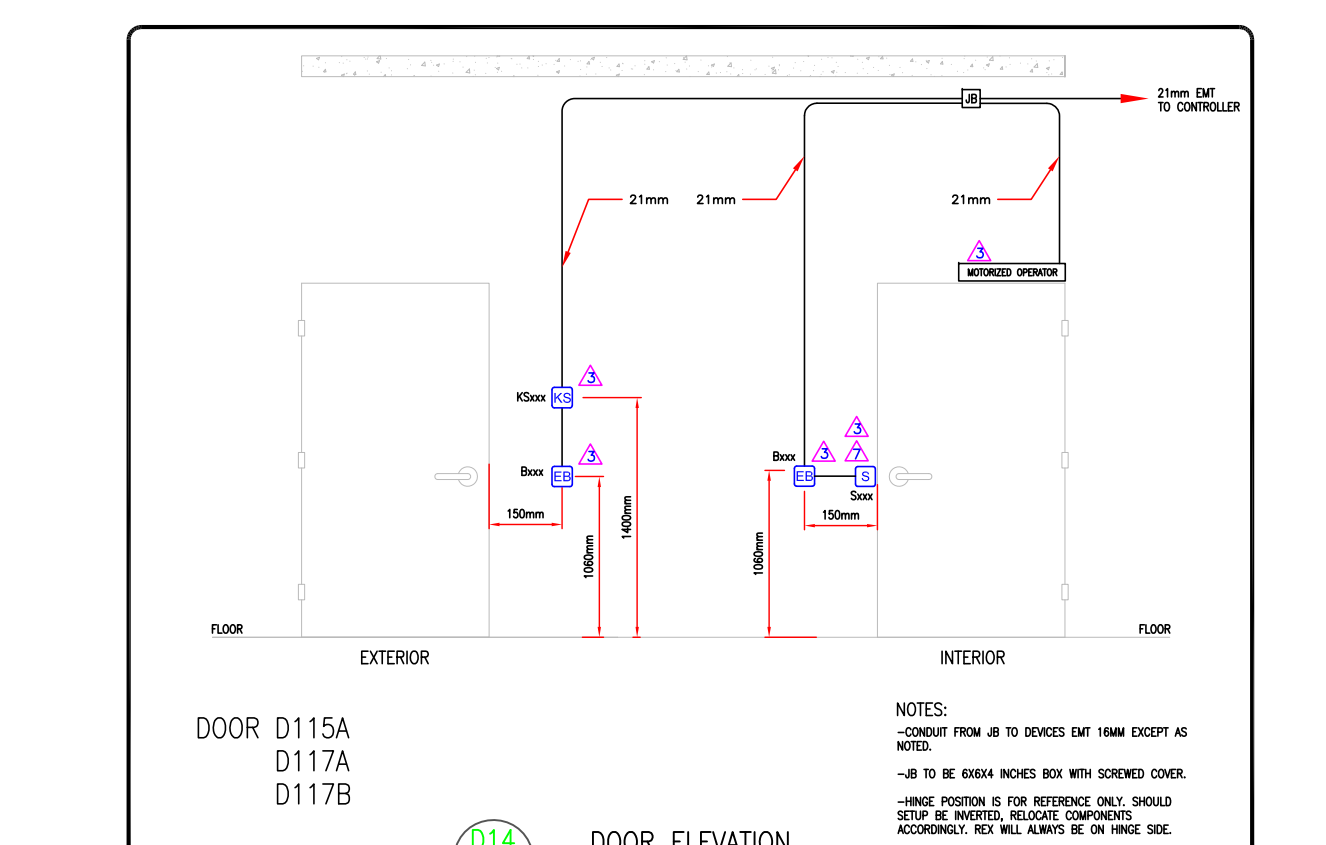
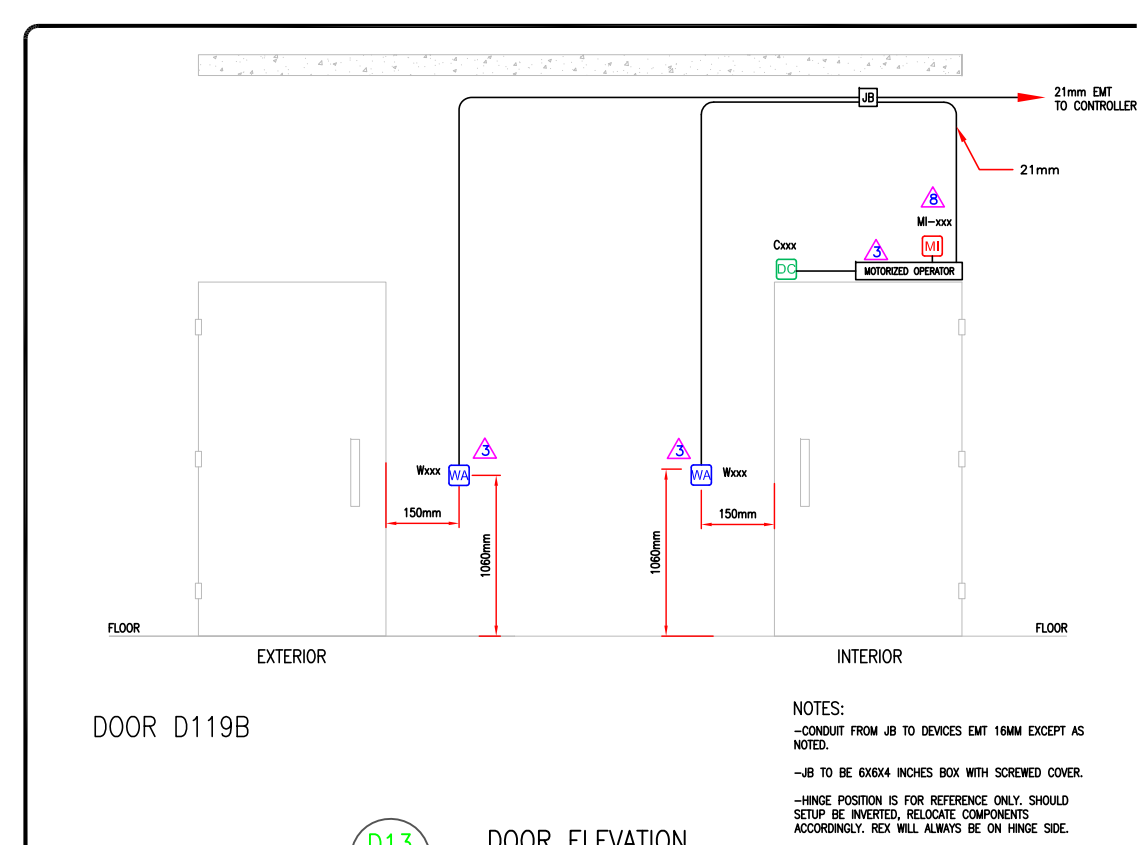
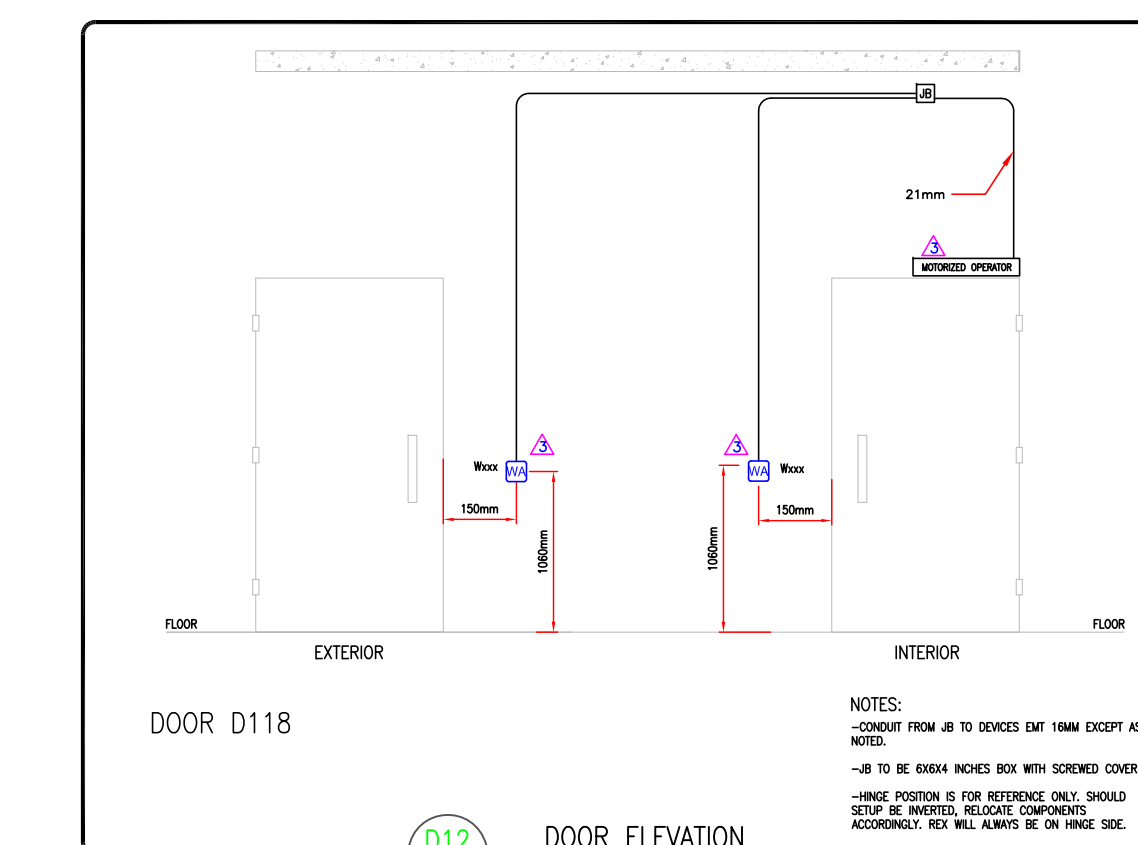
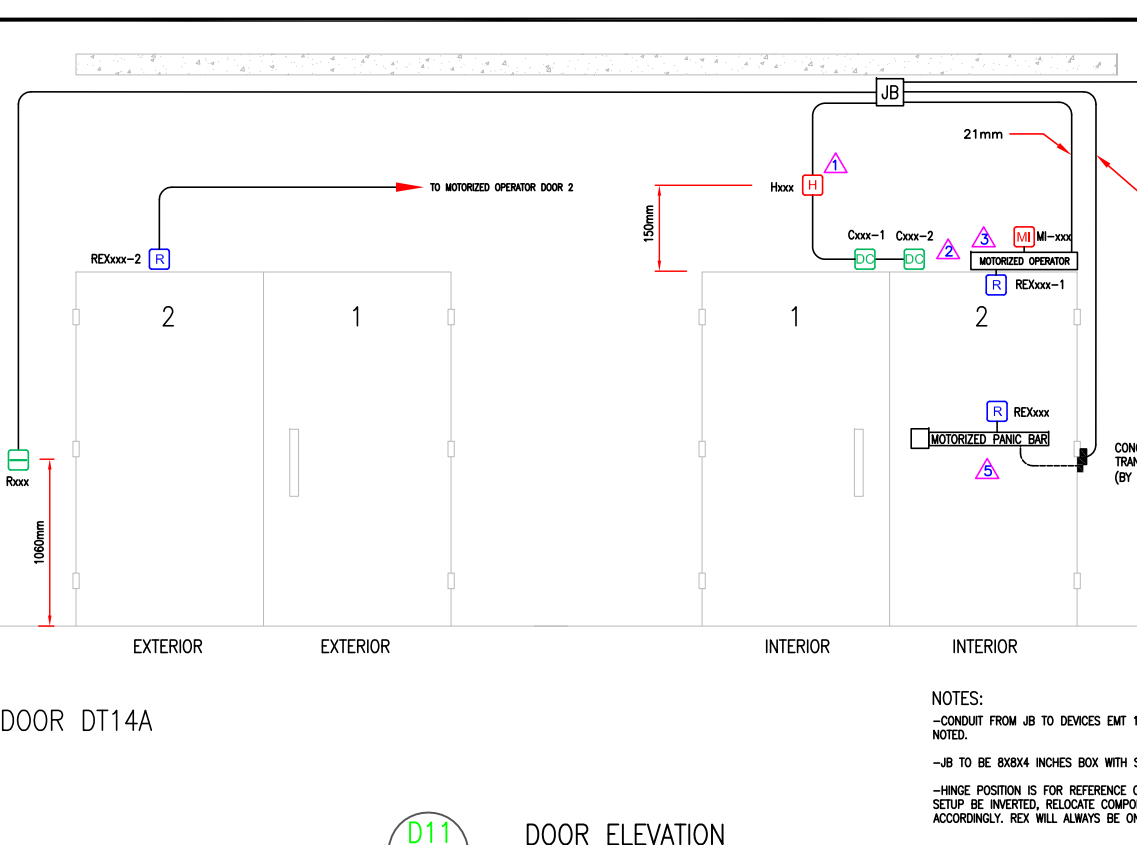
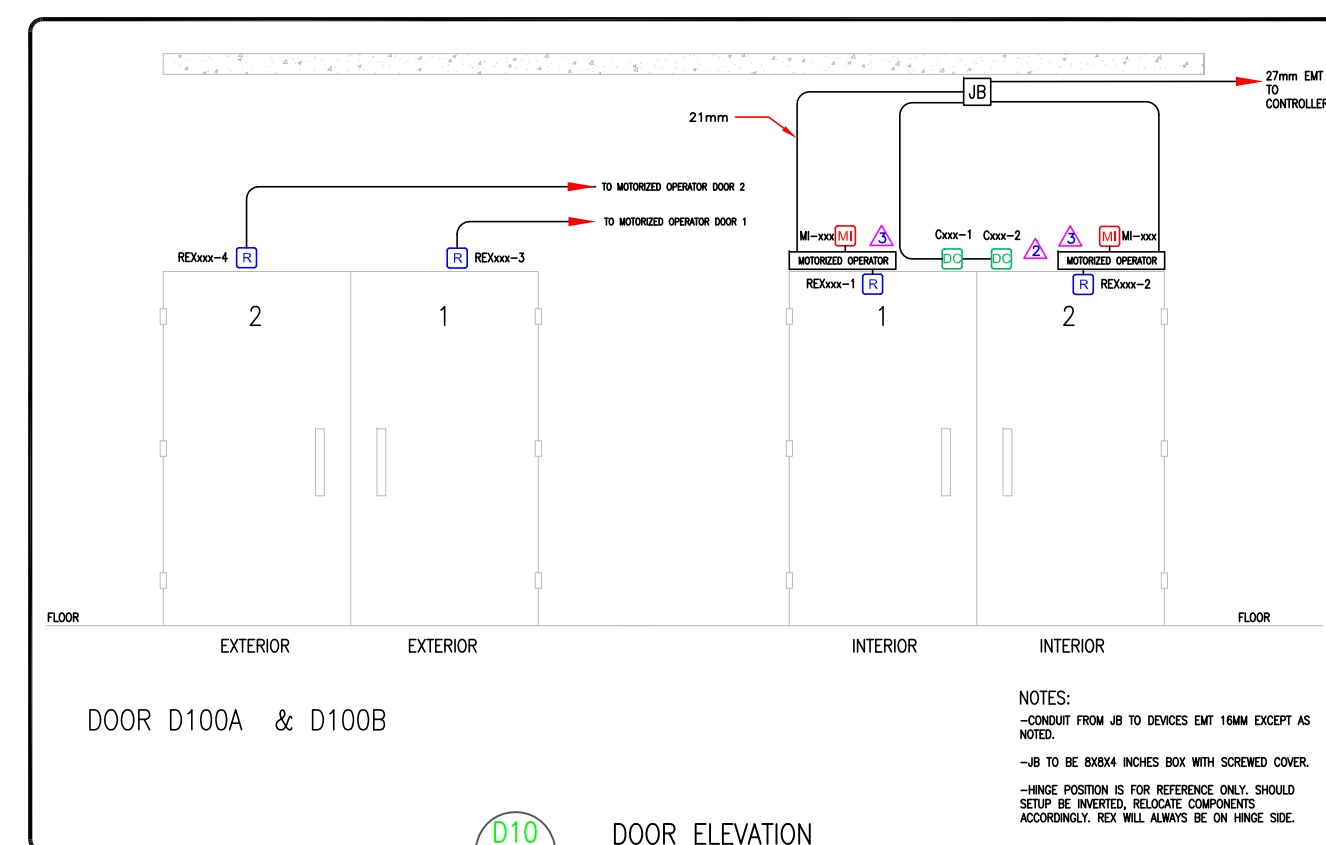
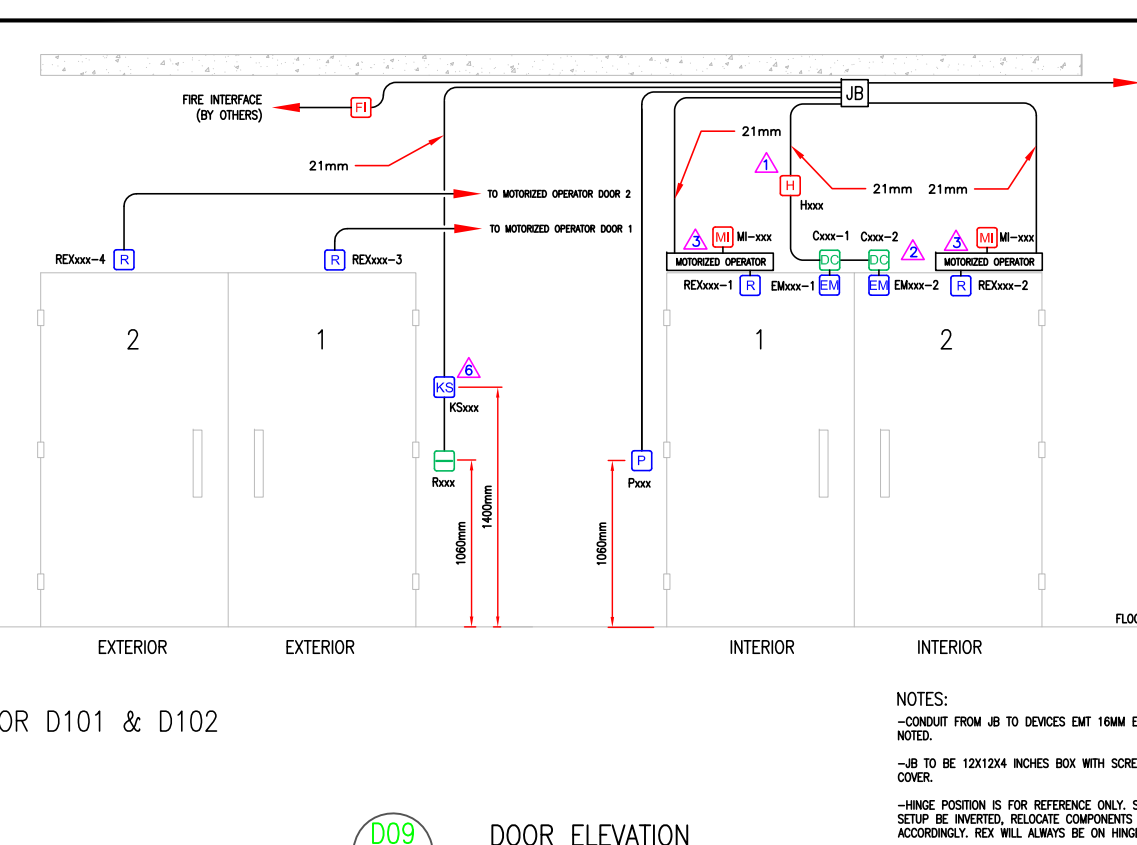
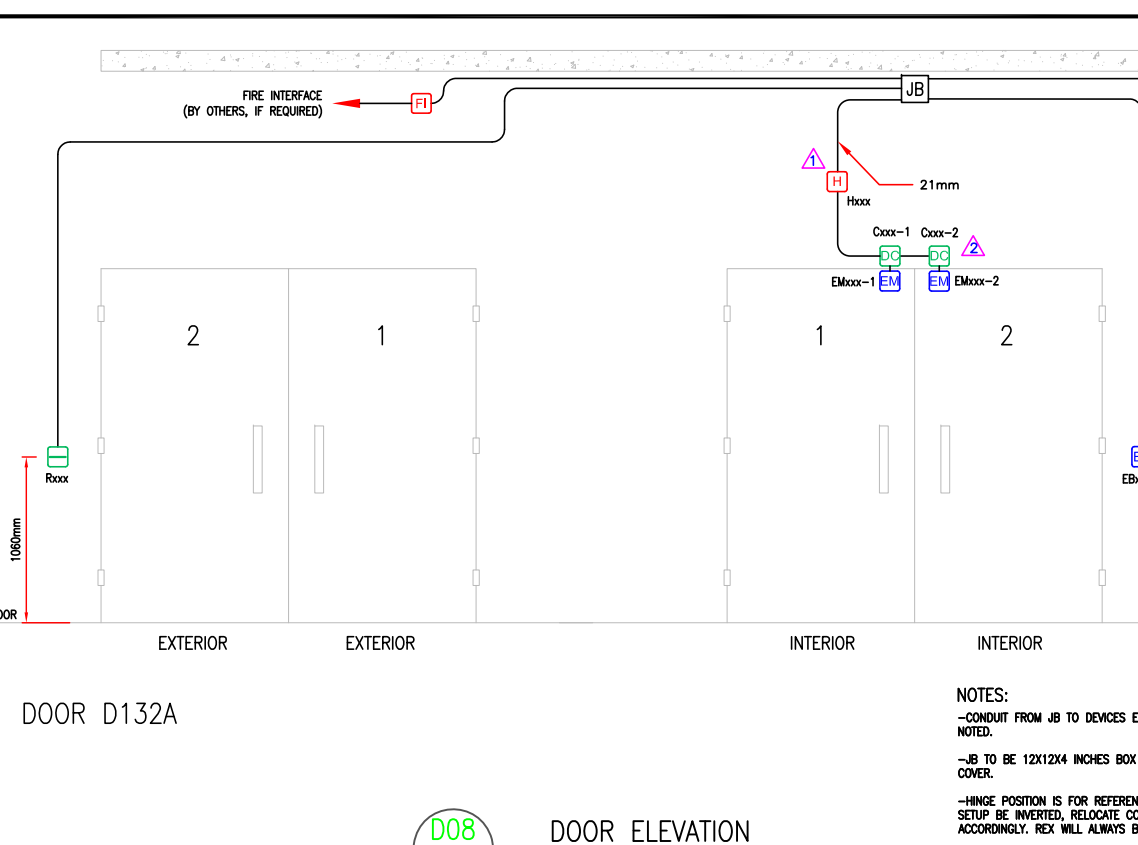
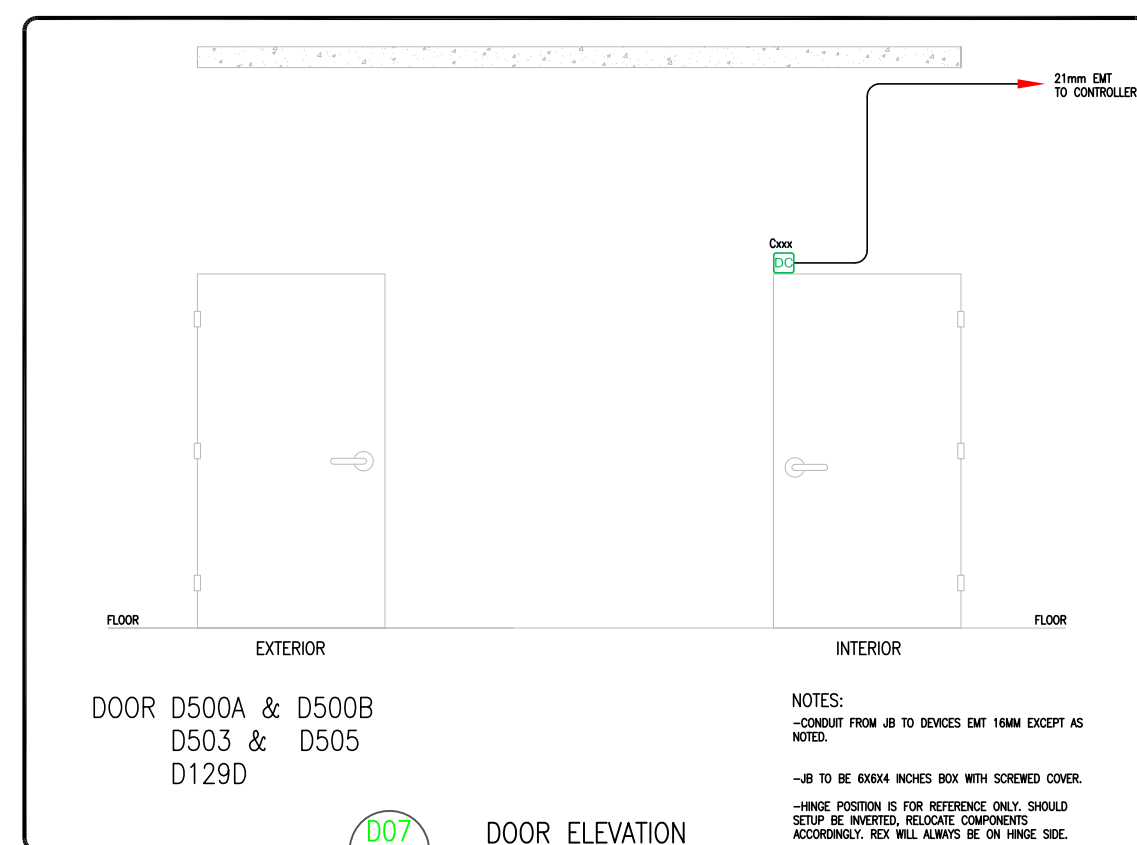
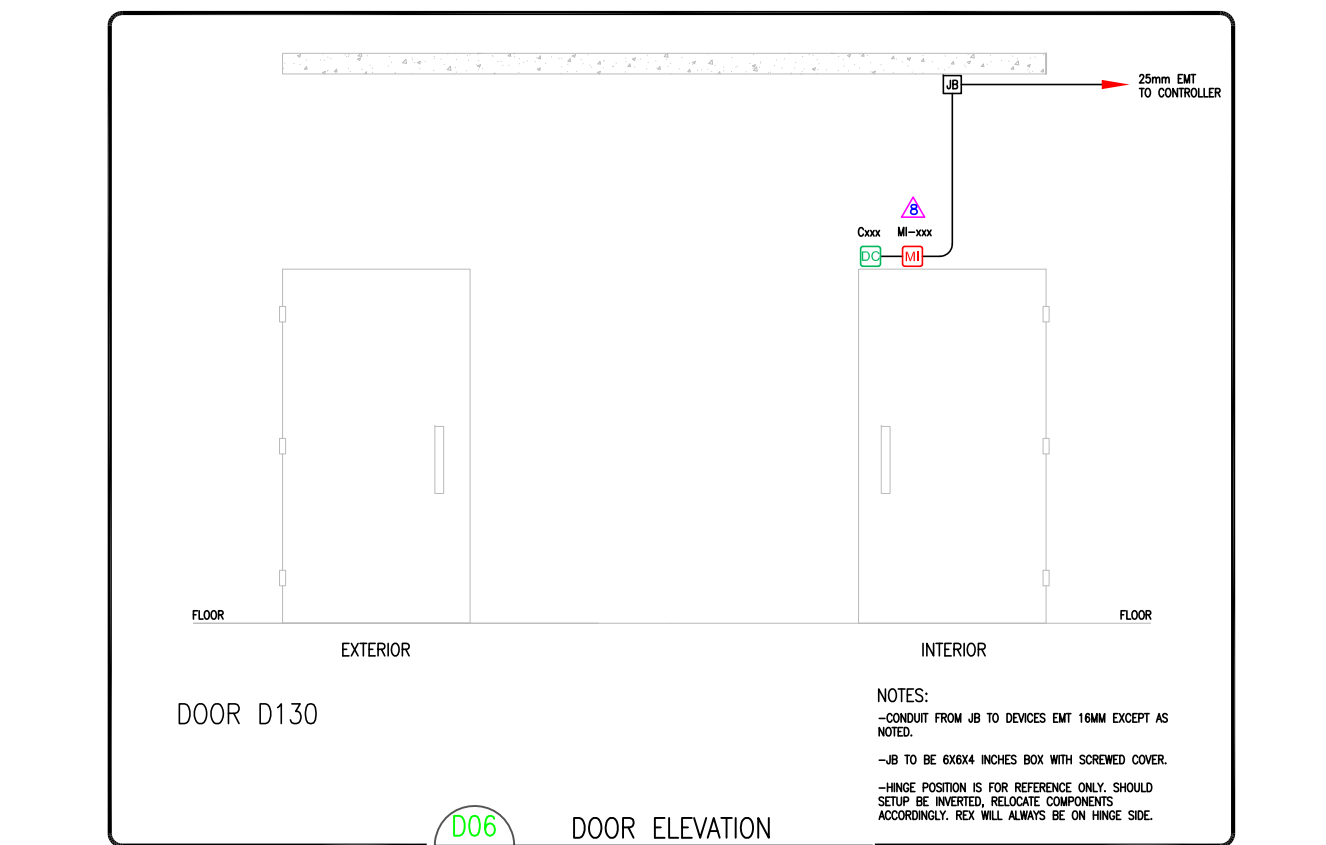
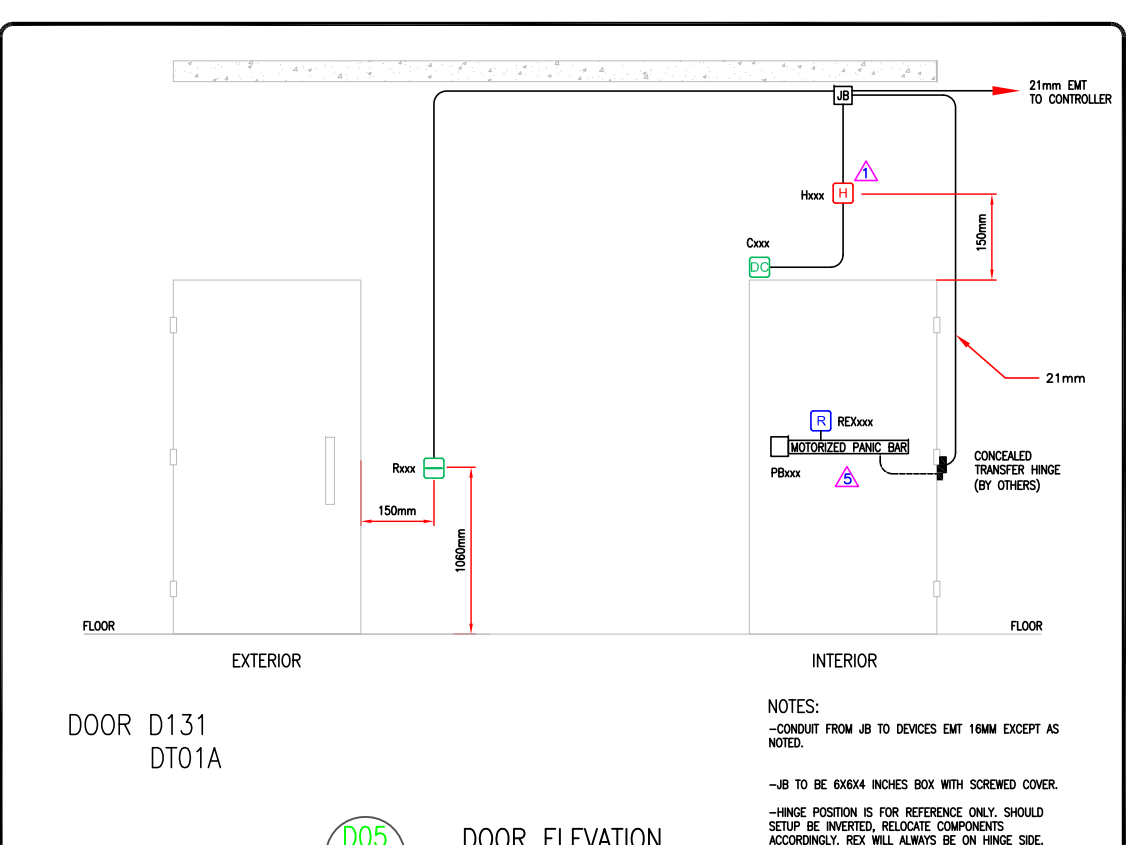
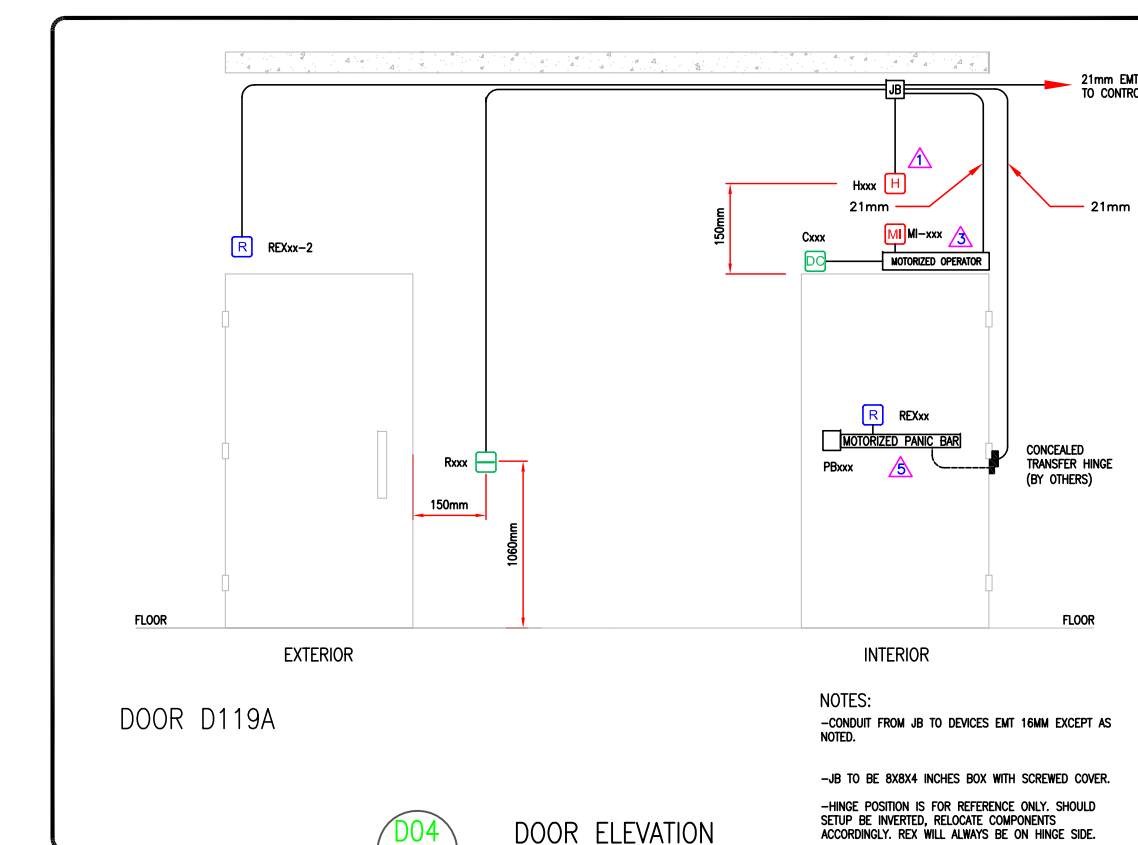
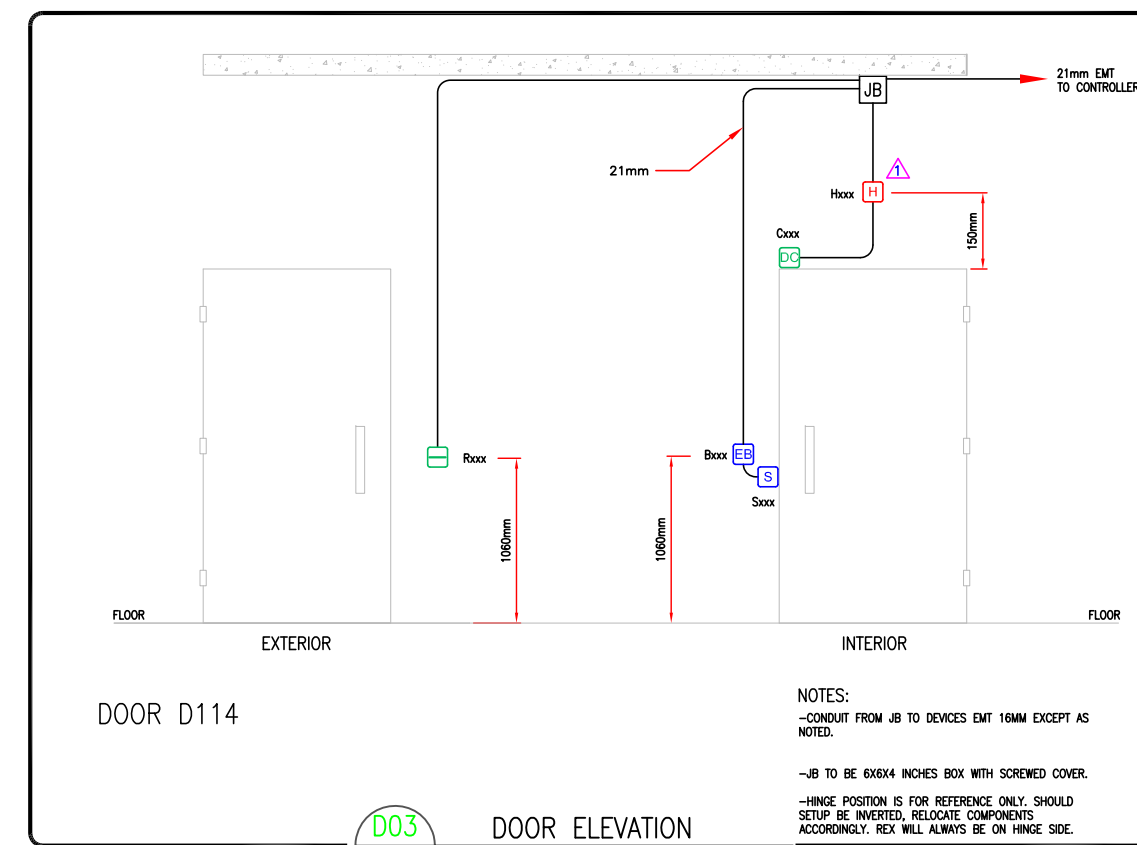
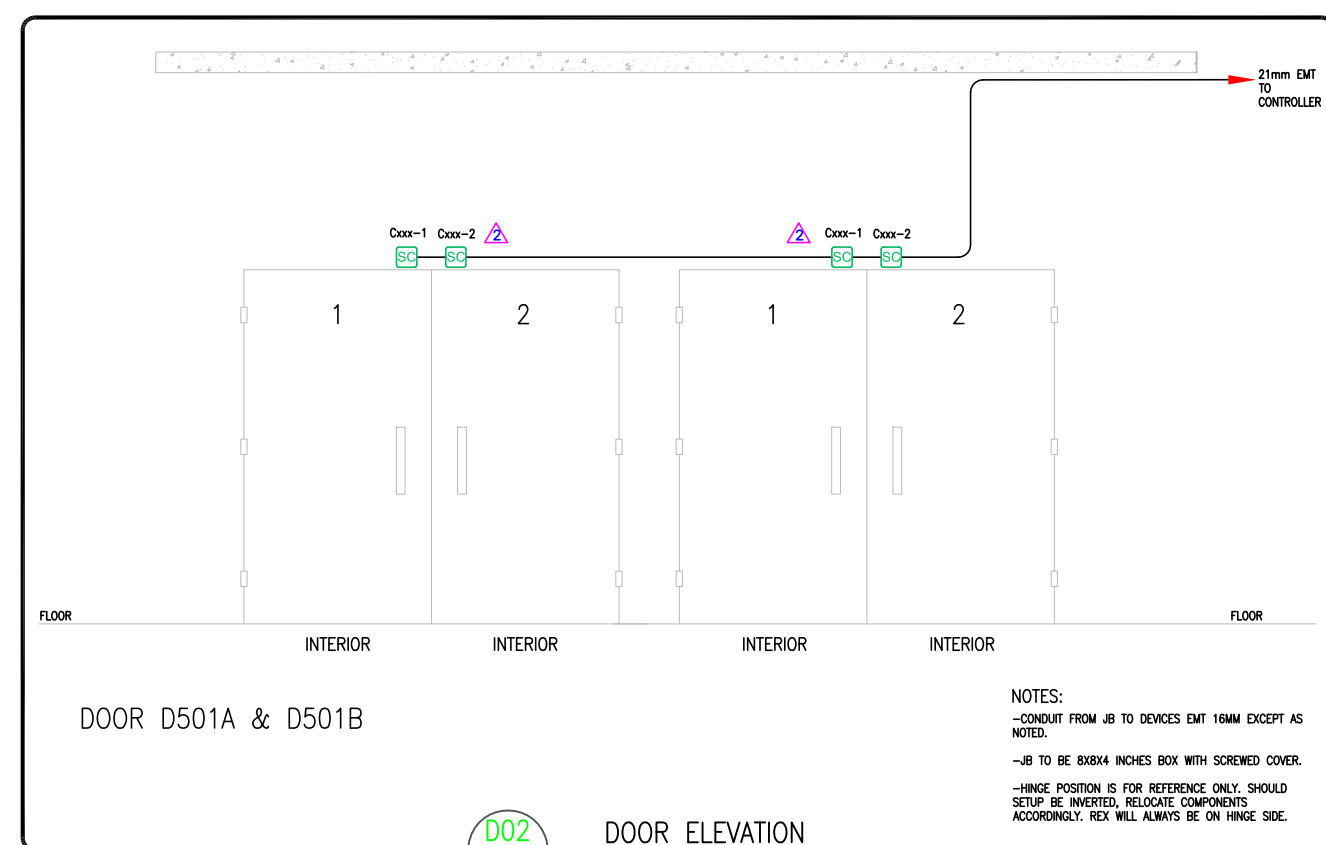
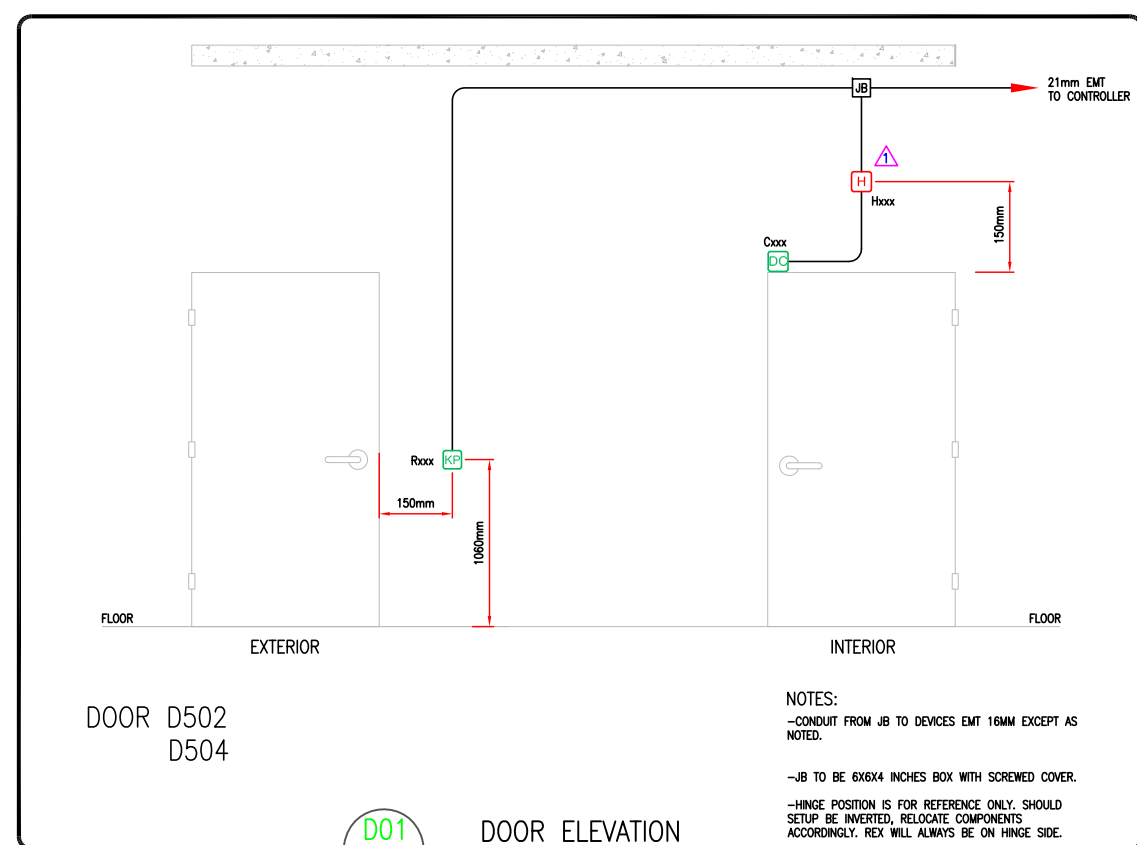
SCALE AT A1: NTS	DATE: 28/2/17	DRAWN: RB	CHECKED: GF
PROJECT NO: 25567	DRAWING NO: Security 000	REVISION: 5	

Notes:

1. THE COPYRIGHT OF THIS DRAWING IS VESTED IN NOOGA CONSULTING INC. AND IT MAY NOT BE REPRODUCED IN WHOLE OR PART OR USED FOR THE MANUFACTURE OF ANY ARTICLE WITHOUT THE EXPRESS PERMISSION OF THE COPYRIGHT HOLDERS.

2. WORK TO FIGURED DIMENSIONS ONLY.

3. THIS DRAWING IS TO BE READ IN CONJUNCTION WITH ALL RELEVANT ARCHITECTS, SERVICE ENGINEER'S AND NOOGA'S DRAWINGS AND SPECIFICATIONS.



DOOR TYPE D01	D502 D504	DOOR TYPE D08	D132A
DOOR TYPE D02	D501A D501B	DOOR TYPE D09	D101 D102
DOOR TYPE D03	D114	DOOR TYPE D10	D100A D100B
DOOR TYPE D04	D119A	DOOR TYPE D11	DT14A
DOOR TYPE D05	D131 DT01A	DOOR TYPE D12	D118
DOOR TYPE D06	D112	DOOR TYPE D13	D119B
DOOR TYPE D07	D129D D130 D500A D500B D503 D505	DOOR TYPE D14	D115A D117A D117B

DEVICES LEGEND			
	PROX CARD READER		ELECTRIC DOOR STRIKE
	LONG RANGE WIEGAND READER		ELECTROMAGNET
	DOOR CONTACT, DOUBLE		EMERGENCY PULL STATION
	DOOR CONTACT, SINGLE		EXIT BUTTON
	DOOR CONTACT, HEAVY DUTY		HANDICAPPED BUTTON
	UTILITY CONTACT		REX (required to HUB) DEVICE
	MOTION DETECTOR		LOCKDOWN BUTTON
	WATER DETECTOR		PANIC BAR
	H&LD TEMPERATURE DETECTOR		DELAYED EGRESS TIMER (D-15)
	SECURITY KEYPAD		ELECTRIFIED MORTISE LOCK
	SECURITY CAMERA, FIXED		KEY SWITCH
	STROBE		WAVE EXIT BUTTON
	GREEN		HORN
	LOCAL SOUNDER		BELL
	FIRE INTERFACE (FPOI)		PANIC BUTTON
	CENTER HORN HORIZONTALLY ACROSS DOOR WIDTH		MOTOR INTERFACE
	CONTACTS HOOKUP AS PER UL COMMERCIAL STANDART		
	AUTOMATIC DOOR OPERATOR (BY OTHERS)		
	ELECTRIFIED MORTISE LOCK, HINGE & HARNESSSES BY OTHERS		
	ELECTRIFIED PANIC BAR CW RETRACTABLE LATCH, REX CONTACTS, HINGE & HARNESSSES, BY OTHERS		
	TAMPERSWITCH UNDER PLATE ON 24H INTRUSION ZONE		
	STRIKE CW LATCH MONITOR SWITCH		
	MOTOR INTERFACE, FUTURE USE - WIRE INTERFACE TO JB ONLY		

5	TENDER-FINAL	RB	28/2/17
4	TENDER	RB	15/01/17
3	MODIFICATIONS	RB	12/12/16
2	MODIFICATIONS	RB	8/31/2016
1	PRELIMINARY	RB	8/23/2016
REV:	DESCRIPTION:	BY:	DATE:

STATUS: **FOR CONSTRUCTION**

NOOGA CONSULTING INC.  
  
 671 Norwood Rd.  
 RR#1 Salmon River  
 Hectanooga, Nova Scotia  
 514.984.2376  
[www.noogaconsulting.com](http://www.noogaconsulting.com)

CLIENT: **R.W Tomlinson Limited**

ARCHITECT: **CHRISTOPHER SIMMONDS  
 THE ANNEX / 45 ECCLES ST.  
 OTTAWA, ONT.**

SITE: **NEW OFFICE BUILDING  
 OTTAWA, ONT.**

TITLE: **DOOR DETAILS 1 / 2**

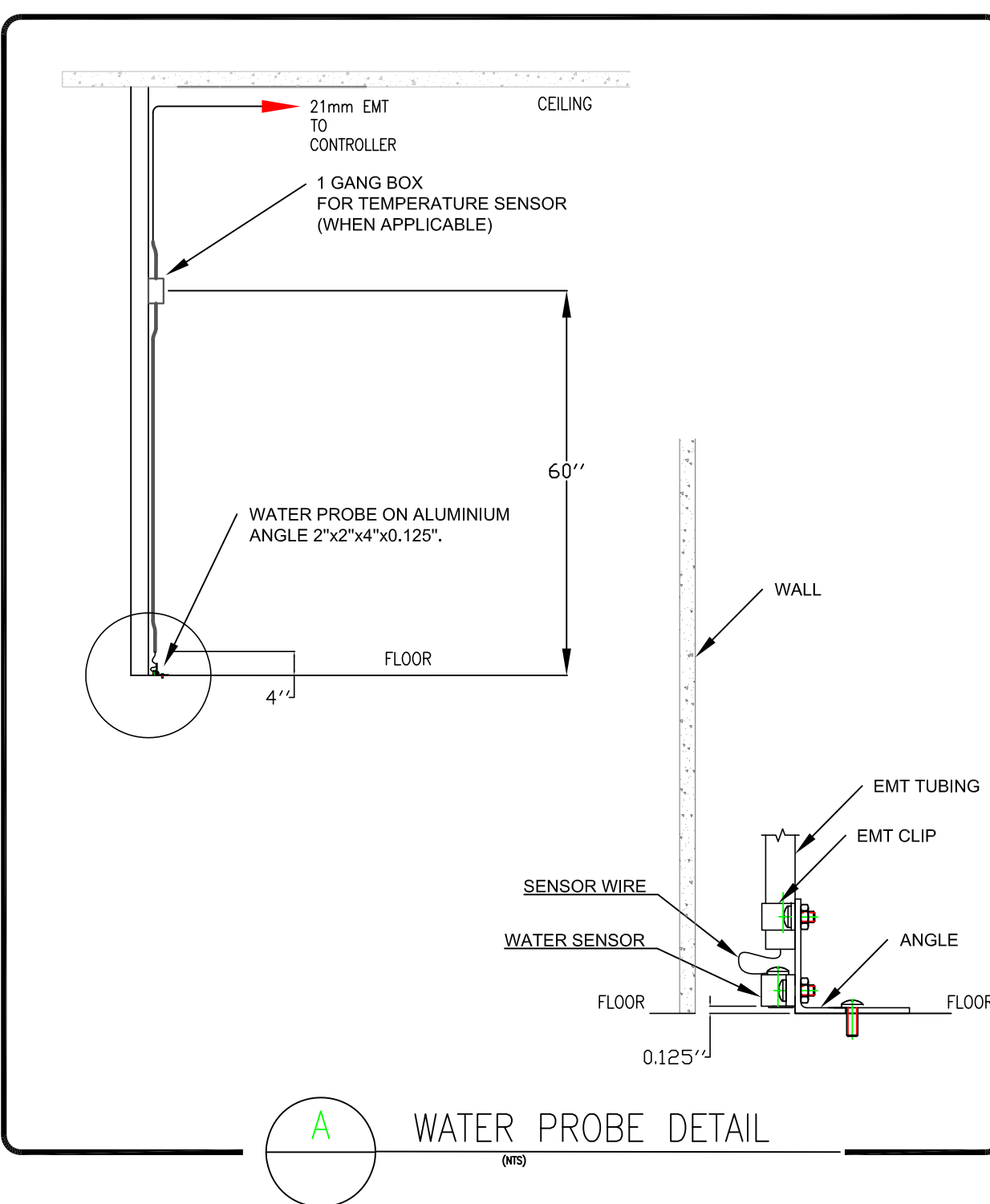
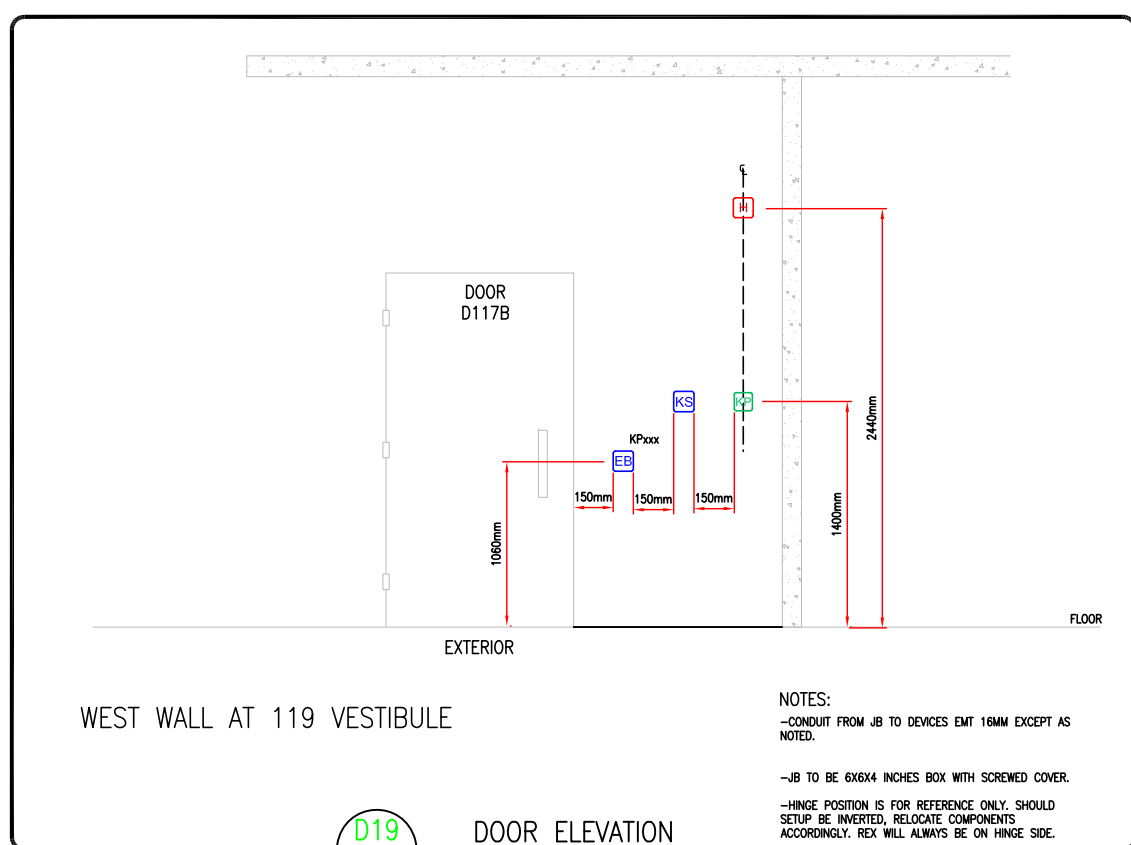
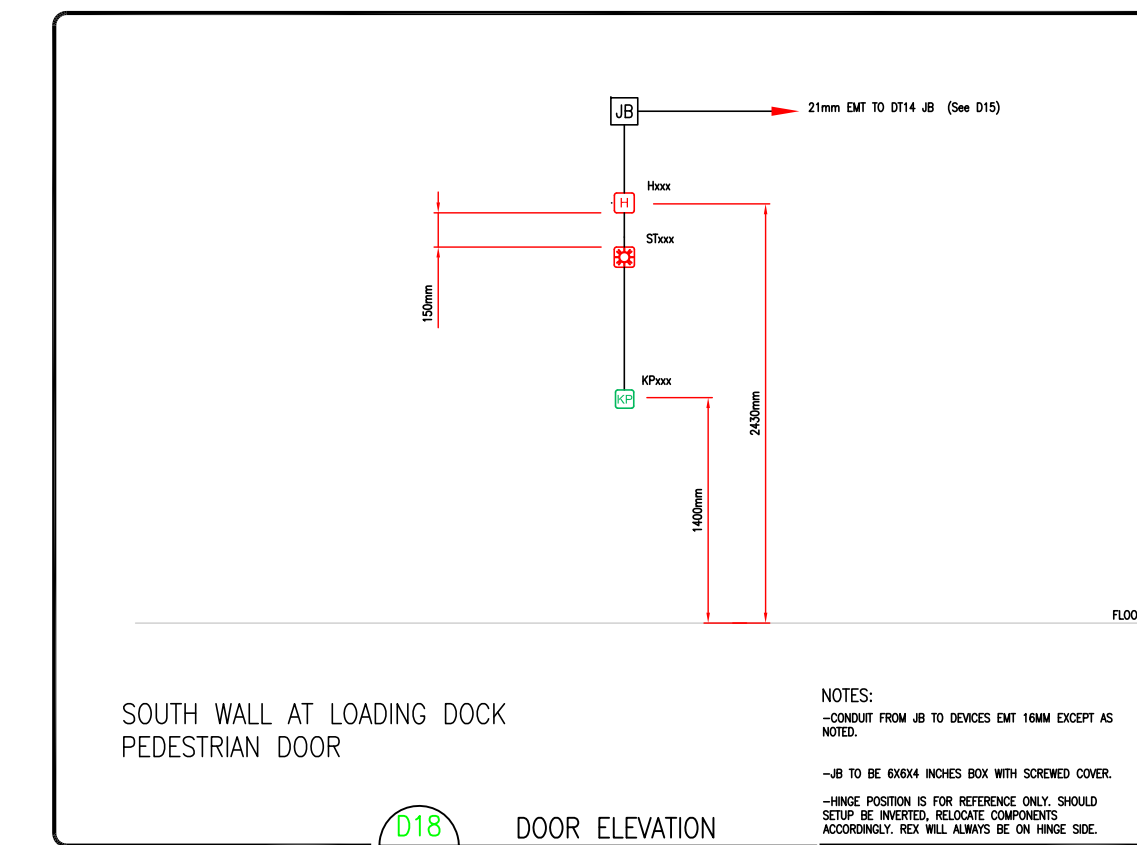
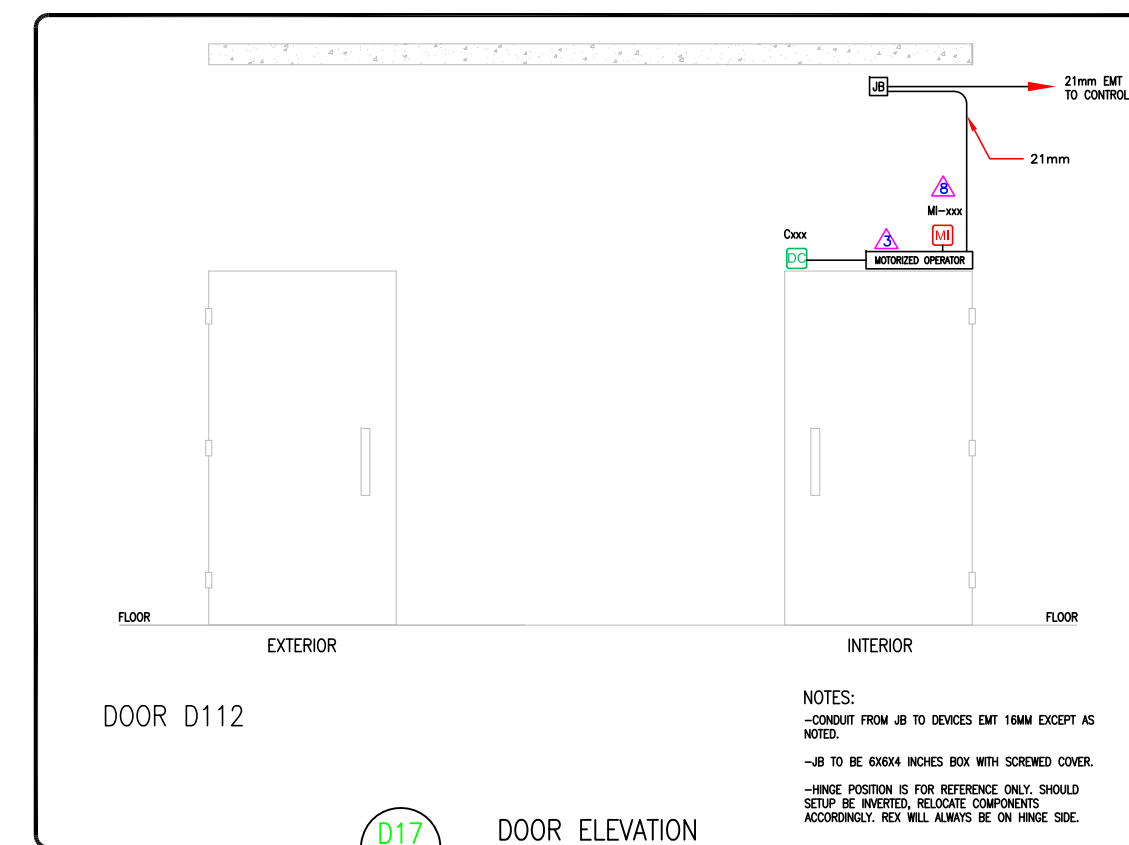
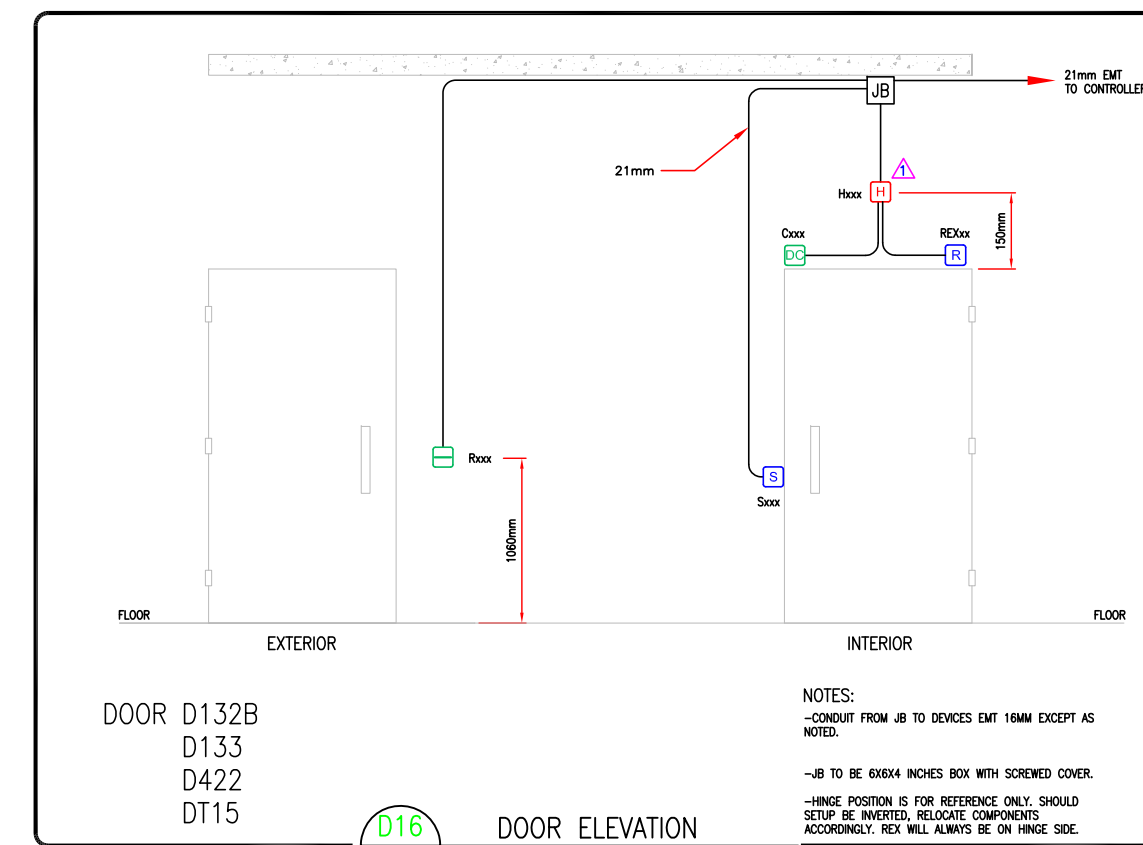
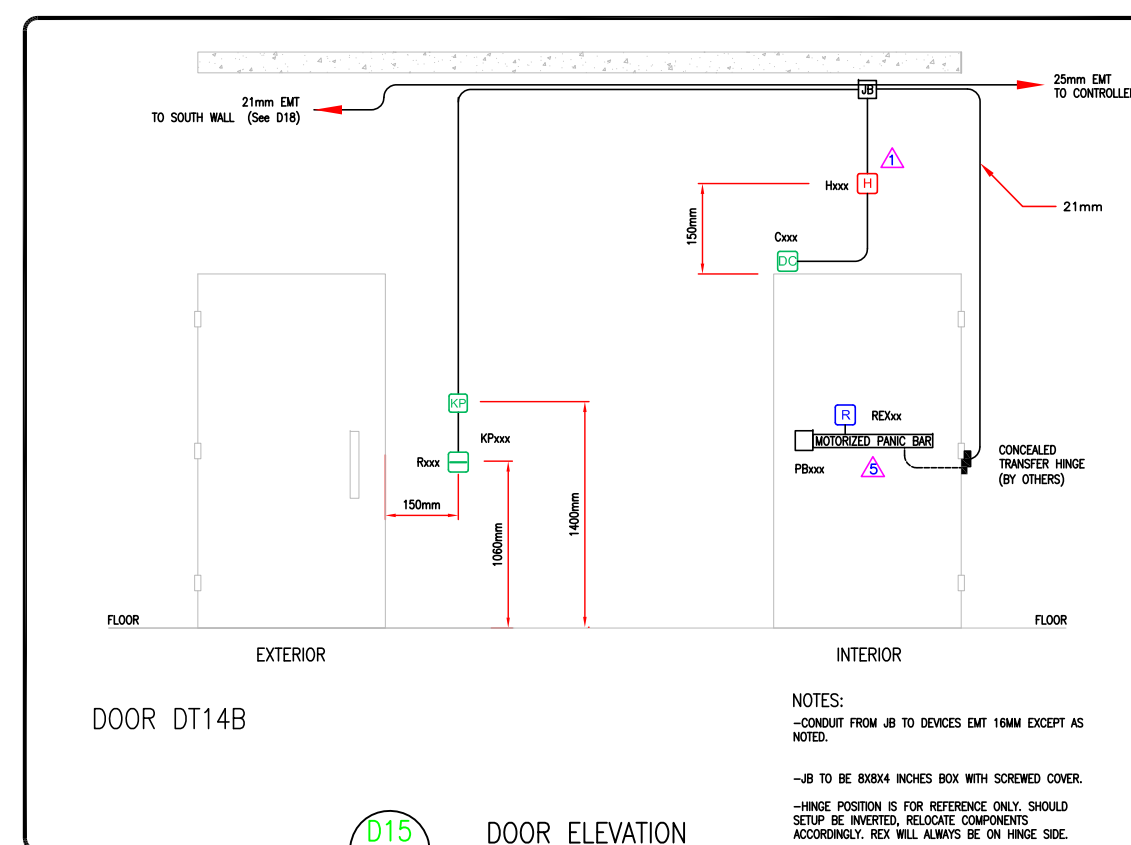
SCALE AT A1:	DATE:	DRAWN:	CHECKED:
NTS	28/2/17	RB	GF
PROJECT NO:	DRAWING NO:	REVISION:	
25567	Security 001A	5	

Notes:

1. THE COPYRIGHT OF THIS DRAWING IS VESTED IN NOOGA CONSULTING INC. AND IT MAY NOT BE REPRODUCED IN WHOLE OR PART OR USED FOR THE MANUFACTURE OF ANY ARTICLE WITHOUT THE EXPRESS PERMISSION OF THE COPYRIGHT HOLDERS.

2. WORK TO FIGURED DIMENSIONS ONLY.

3. THIS DRAWING IS TO BE READ IN CONJUNCTION WITH ALL RELEVANT ARCHITECTS, SERVICE ENGINEER'S AND NOOGA'S DRAWINGS AND SPECIFICATIONS.



DOOR TYPE D15	DT14B
DOOR TYPE D16	D132B D133 D422 DT15
DOOR TYPE D17	D112

DEVICES LEGEND	
[Symbol] PROX CARD READER	[Symbol] ELECTRIC DOOR STRIKE
[Symbol] LONG RANGE WIGAND READER	[Symbol] ELECTROMAGNET
[Symbol] DOOR CONTACT, DOUBLE	[Symbol] EMERGENCY PULL STATION
[Symbol] DOOR CONTACT, SINGLE	[Symbol] EXIT BUTTON
[Symbol] DOOR CONTACT, HEAVY DUTY	[Symbol] HANDICAPPED BUTTON
[Symbol] UTILITY CONTACT	[Symbol] REX (request to exit) DEVICE
[Symbol] MOTION DETECTOR	[Symbol] LOCKDOWN BUTTON
[Symbol] WATER DETECTOR	[Symbol] PANIC BAR
[Symbol] HLD TEMPERATURE DETECTOR	[Symbol] DELAYED EGRESS TIMER (3-15)
[Symbol] SECURITY KEYPAD	[Symbol] ELECTRIFIED MORTISE LOCK
[Symbol] SECURITY CAMERA, FIXED	[Symbol] KEYSWITCH
[Symbol] STROBE	[Symbol] WAVE EXIT BUTTON
[Symbol] SIREN	[Symbol] HORN
[Symbol] LOCAL SOUNDER	[Symbol] BELL
[Symbol] FIRE INTERFACE (DPT)	[Symbol] PANIC BUTTON
[Symbol] CENTER HORN HORIZONTALLY ACROSS DOOR WIDTH	[Symbol] MOTOR INTERFACE
[Symbol] CONTACTS HOOKUP AS PER UL-C COMMERCIAL STANDART	
[Symbol] AUTOMATIC DOOR OPERATOR (BY OTHERS)	
[Symbol] ELECTRIFIED MORTISE LOCK, HINGE & HARNESSES BY OTHERS	
[Symbol] ELECTRIFIED PANIC BAR C/W RETRACTABLE LATCH, REX, CONTACTS, HINGE & HARNESSES, BY OTHERS	
[Symbol] TAMPER SWITCH UNDER PLATE ON 24V INTRUSION ZONE	
[Symbol] STRIKE C/W LATCH MONITOR SWITCH	
[Symbol] MOTOR INTERFACE, FUTURE USE - WIRE INTERFACE TO JB ONLY	

5	TENDER-FINAL	RB	28/2/17
4	TENDER	RB	15/01/17
3	MODIFICATIONS	RB	12/12/16
2	MODIFICATIONS	RB	8/31/2016
1	PRELIMINARY	RB	8/23/2016
REV:	DESCRIPTION:	BY:	DATE:

STATUS: **FOR CONSTRUCTION**

**NOOGA CONSULTING INC.**  
 671 Norwood Rd.  
 RR#1 Salmon River  
 Hectanooga, Nova Scotia  
 514.984.2376  
[www.noogaconsulting.com](http://www.noogaconsulting.com)

CLIENT: **R.W Tomlinson Limited**

ARCHITECT: **CHRISTOPHER SIMMONDS  
THE ANNEX / 45 ECCLES ST.  
OTTAWA, ONT.**

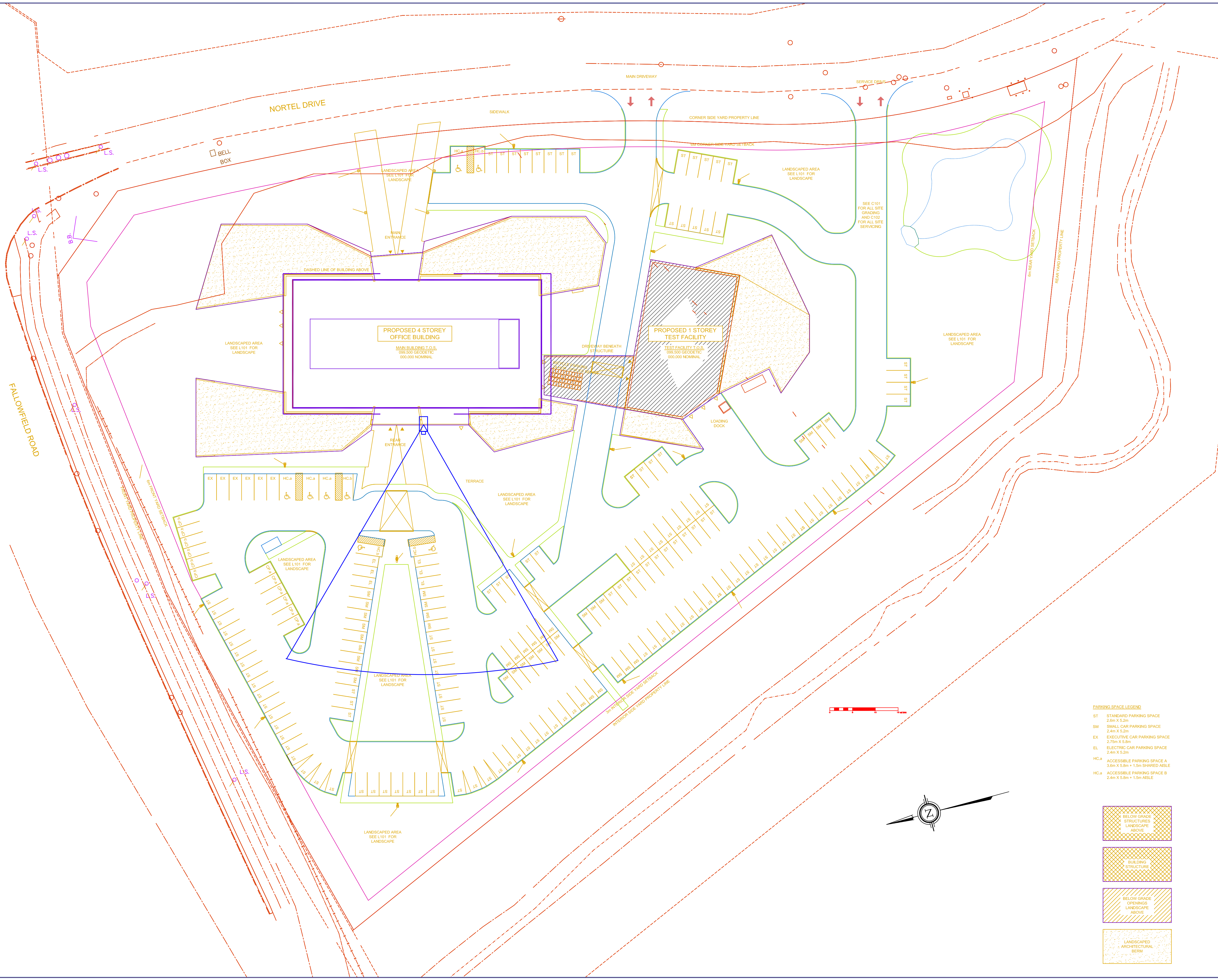
SITE: **NEW OFFICE BUILDING  
OTTAWA, ONT.**

TITLE: **DOOR DETAILS 2 / 2**

SCALE AT A1:	DATE:	DRAWN:	CHECKED:
NTS	28/2/17	RB	GF
PROJECT NO:	DRAWING NO:	REVISION:	
25567	Security 001B	5	

Notes:

1. THE COPYRIGHT OF THIS DRAWING IS VESTED IN NOOGA CONSULTING INC. AND IT MAY NOT BE REPRODUCED IN WHOLE OR PART OR USED FOR THE MANUFACTURE OF ANY ARTICLE WITHOUT THE EXPRESS PERMISSION OF THE COPYRIGHT HOLDERS.
2. WORK TO FIGURED DIMENSIONS ONLY.
3. THIS DRAWING IS TO BE READ IN CONJUNCTION WITH ALL RELEVANT ARCHITECTS, SERVICE ENGINEER'S AND NOOGA CONSULTING DRAWINGS AND SPECIFICATIONS.



**PARKING SPACE LEGEND**

ST	STANDARD PARKING SPACE 2.6m X 5.2m
SM	SMALL CAR PARKING SPACE 2.4m X 5.2m
EX	EXECUTIVE CAR PARKING SPACE 2.75m X 5.8m
EL	ELECTRIC CAR PARKING SPACE 2.4m X 5.2m
HC.a	ACCESSIBLE PARKING SPACE A 3.6m X 5.8m + 1.5m SHARED ASBLE
HC.b	ACCESSIBLE PARKING SPACE B 2.4m X 5.8m + 1.5m ASBLE

	BELOW GRADE STRUCTURES AND LANDSCAPE ABOVE
	BUILDING STRUCTURE
	BELOW GRADE OPENINGS AND LANDSCAPE ABOVE
	LANDSCAPED ARCHITECTURAL BERM

5	TENDER-FINAL	RB	28/2/17
4	TENDER	RB	15/01/17
3	DESIGN_MODIFICATIONS	RB	12/12/16
2	DESIGN_MODIFICATIONS	RB	8/31/16
1	PRELIMINARY	RB	8/23/16
REV:	DESCRIPTION:	BY:	DATE:
<b>FOR CONSTRUCTION</b>			

**NOOGA CONSULTING INC.**  
  
 671 Norwood Rd.  
 RR#1 Salmon River  
 Hectanooga, Nova Scotia  
 514.984.2376  
[www.noogaconsulting.com](http://www.noogaconsulting.com)

CLIENT: **R.W Tomlinson Limited**

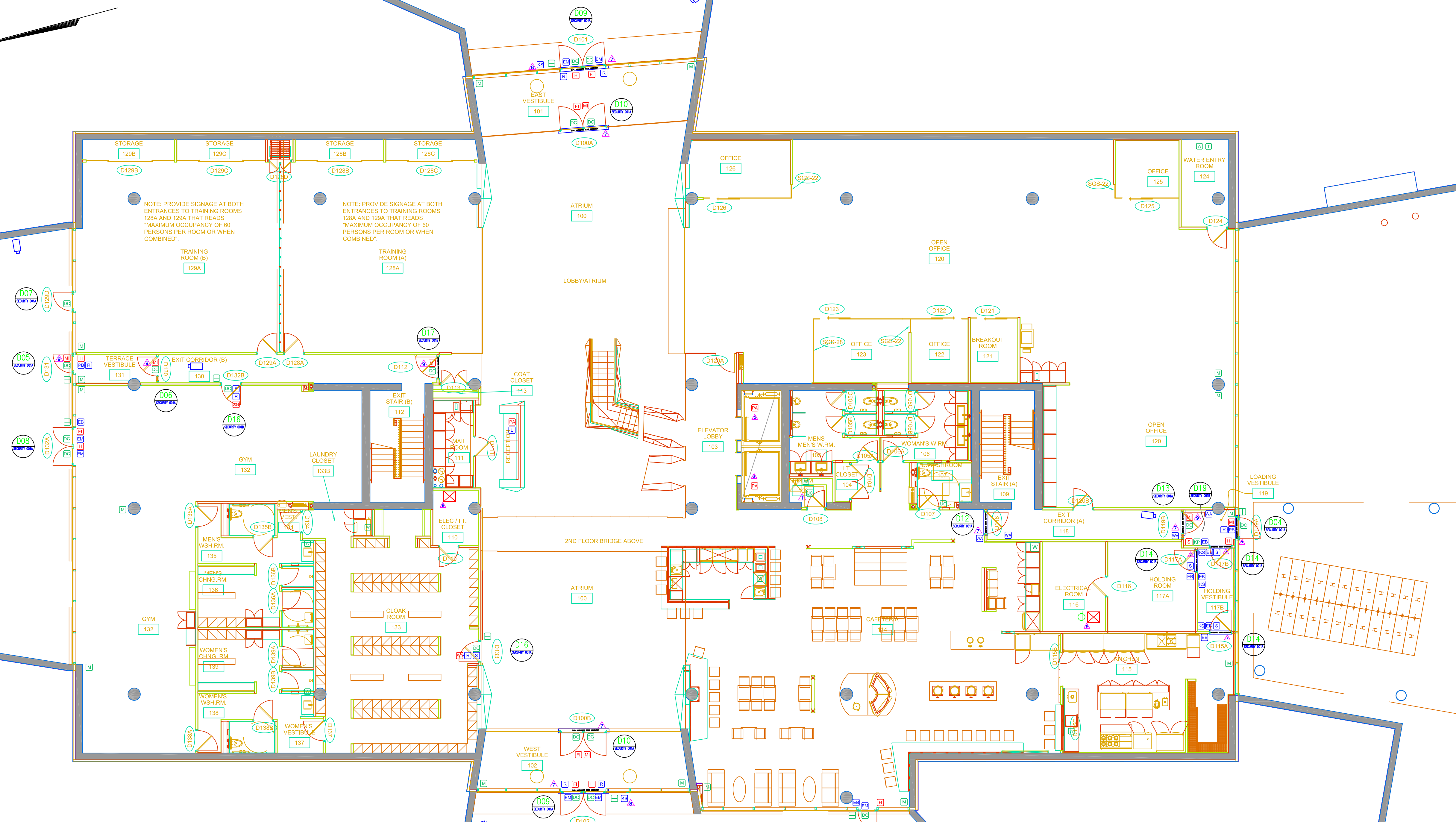
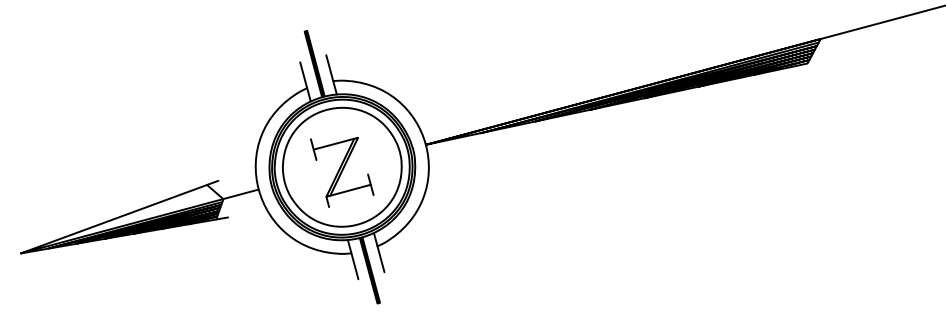
ARCHITECT: **CHRISTOPHER SIMMONDS  
 THE ANNEX / 45 ECCLES ST.  
 OTTAWA, ONT.**

SITE: **NEW OFFICE BUILDING  
 OTTAWA, ONT.**  
 TITLE: **GROUNDS**

SCALE AT A1:	DATE:	DRAWN:	CHECKED:
NTS	28/2/17	RB	GF
PROJECT NO:	DRAWING NO:	REVISION:	
25567	Security 002	5	

Notes:

1. THE COPYRIGHT OF THIS DRAWING IS VESTED IN NOOGA CONSULTING INC. AND IT MAY NOT BE REPRODUCED IN WHOLE OR PART OR USED FOR THE MANUFACTURE OF ANY ARTICLE WITHOUT THE EXPRESS PERMISSION OF THE COPYRIGHT HOLDERS.
2. WORK TO FIGURED DIMENSIONS ONLY.
3. THIS DRAWING IS TO BE READ IN CONJUNCTION WITH ALL RELEVANT ARCHITECTS, SERVICE ENGINEERS AND NOOGA CONSULTING DRAWINGS AND SPECIFICATIONS.



**DEVICES LEGEND**

	PROX CARD READER		ELECTRIC DOOR STRIKE
	LONG RANGE WAND READER		ELECTROMAGNET
	DOOR CONTACT, DOUBLE		EMERGENCY PULL STATION
	DOOR CONTACT, SINGLE		EXIT BUTTON
	DOOR CONTACT, HEAVY DUTY		HANDICAPPED BUTTON
	UTILITY CONTACT		REX (request to exit) DEVICE
	MOTION DETECTOR		LOCKDOWN BUTTON
	WATER DETECTOR		PANIC BAR
	HILO TEMPERATURE DETECTOR		DELAYED EGRESS TIMER (3-15)
	SECURITY KEYPAD		ELECTRIFIED MORTISE LOCK
	SECURITY CAMERA, FIXED		KEYSWITCH
	STROBE		WAVE ACTUATED EXIT BUTTON
	SIREN		HORN
	LOCAL SOUNDER		BELL
	FIRE INTERFACE (IPOT)		PANIC BUTTON
	MOTOR INTERFACE		MOTOR INTERFACE

SUMP PUMP CONTROLLER HI-LEVEL ALARM: TO BE COORDINATED WITH G.C. & SUMP CONTROLLER SUPPLIER.  
 PANIC BUTTONS TYPE, LOCATION AND CONFIGURATION TO BE COORDINATED WITH G.C. & ELEVATOR FIRM.

SECURITY CONTROLLERS LOCATION  
 AUTOMATIC ELECTRIC DOOR OPERATOR (BY OTHERS)  
 TAMPER SWITCH UNDER KEYSWITCH PLATE AND KEY ACTIVATION MONITORED, BOTH BY INTRUSION SYSTEM  
 MOTOR INTERFACE, FUTURE USE - WIRE INTERFACE TO JB ONLY

5	TENDER-FINAL	RB	28/2/17
4	TENDER	RB	15/01/17
3	MODIFICATIONS	RB	12/12/2016
2	MODIFICATIONS	RB	8/31/2016
1	PRELIMINARY	RB	8/23/2016
REV:	DESCRIPTION:	BY:	DATE:

STATUS: **FOR CONSTRUCTION**

**NOOGA CONSULTING INC.**  
  
 671 Norwood Rd.  
 RR#1 Salmon River  
 Hectanooga, Nova Scotia  
 514.984.2376  
[www.noogaconsulting.com](http://www.noogaconsulting.com)

CLIENT: **R.W Tomlinson Limited**

ARCHITECT: **CHRISTOPHER SIMMONDS**  
 THE ANNEX / 45 ECCLES ST.  
 OTTAWA, ONT.

SITE: **NEW OFFICE BUILDING**  
**OTTAWA, ONT.**

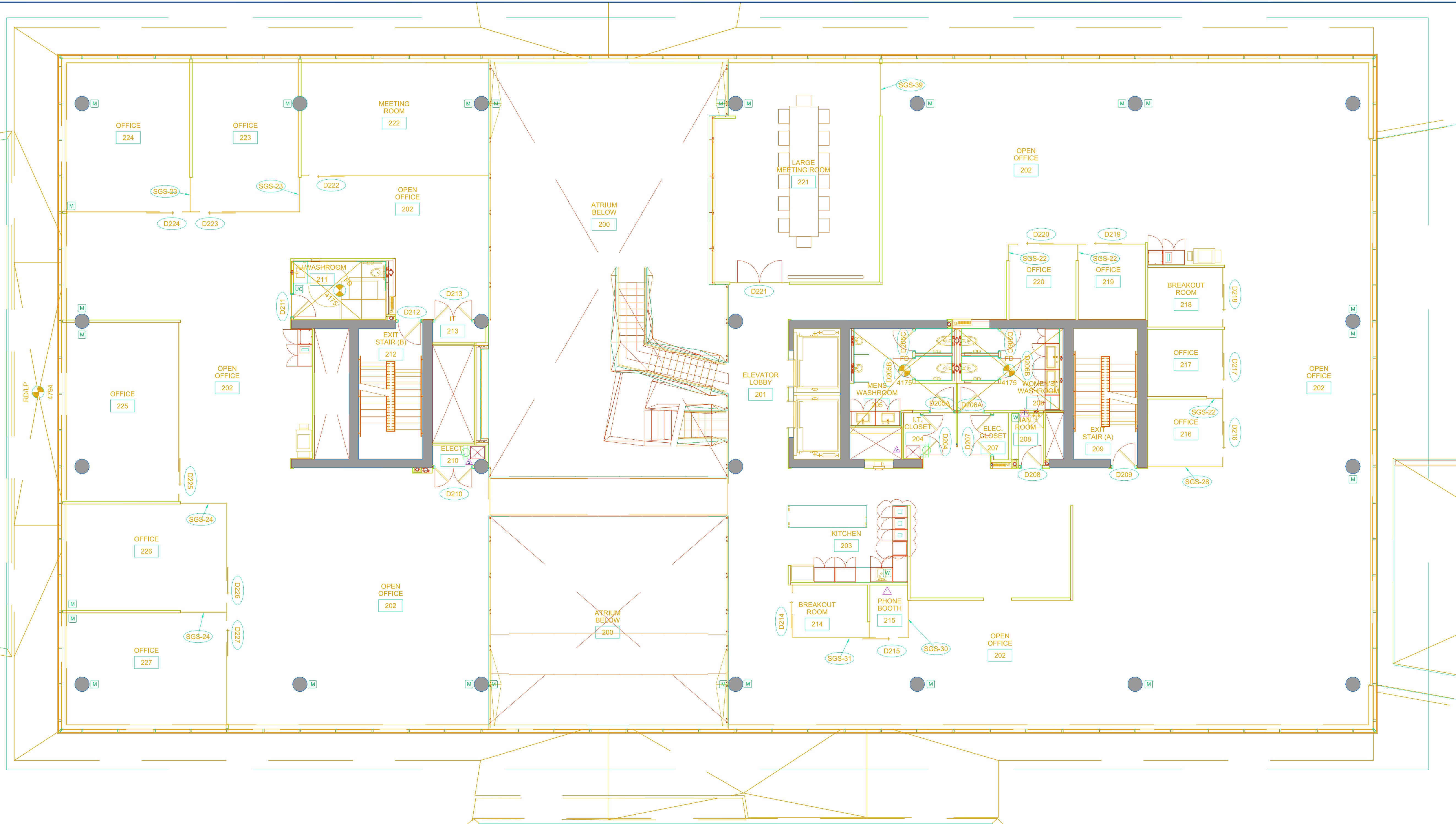
TITLE: **SECURITY GROUND FLOOR**  
**DEVICES**

SCALE AT A1:	DATE:	DRAWN:	CHECKED:
NTS	28/2/17	RB	GF
PROJECT NO:	DRAWING NO:	REVISION:	
25567	Security 003D	5	



Notes:

1. THE COPYRIGHT OF THIS DRAWING IS VESTED IN NOOGA CONSULTING INC. AND IT MAY NOT BE REPRODUCED IN WHOLE OR PART OR USED FOR THE MANUFACTURE OF ANY ARTICLE WITHOUT THE EXPRESS PERMISSION OF THE COPYRIGHT HOLDERS.
2. WORK TO FIGURED DIMENSIONS ONLY.
3. THIS DRAWING IS TO BE READ IN CONJUNCTION WITH ALL RELEVANT ARCHITECTS, SERVICE ENGINEER'S AND NOOGA CONSULTING DRAWINGS AND SPECIFICATIONS.



DEVICES LEGEND			
	PROX CARD READER		ELECTRIC DOOR STRIKE
	LONG RANGE WIEGAND READER		ELECTROMAGNET
	DOOR CONTACT, DOUBLE		EMERGENCY PULL STATION
	DOOR CONTACT, SINGLE		EXIT BUTTON
	DOOR CONTACT, HEAVY DUTY		HANDICAPPED BUTTON
	UTILITY CONTACT		REX (request to exit) DEVICE
	MOTION DETECTOR		LOCKDOWN BUTTON
	WATER DETECTOR		PANIC BAR
	HILO TEMPERATURE DETECTOR		DELAYED EGRESS TIMER (3-15)
	SECURITY KEYPAD		ELECTRIFIED MORTISE LOCK
	SECURITY CAMERA, FIXED		KEYSWITCH
	STROBE		HORN
	SIREN		BELL
	LOCAL SOUNDER		PANIC BUTTON
	FIRE INTERFACE (DPDT)		MOTOR INTERFACE
	SEE MOUNTING DETAIL ON DRAWING SECURITY 001A / CONDUIT DETAILS.		
	SECURITY CONTROLLERS		

5	TENDER-FINAL	RB	28/2/17
4	TENDER	RB	15/01/17
3	MODIFICATIONS	RB	12/12/16
2	MODIFICATIONS	RB	8/23/16
1	PRELIMINARY	RB	8/23/16

REV: DESCRIPTION: BY: DATE:

STATUS: **FOR CONSTRUCTION**

**NOOGA CONSULTING INC.**



671 Norwood Rd.  
RR#1 Salmon River  
Hectanooga, Nova Scotia  
514.984.2376  
www.noogaconsulting.com

CLIENT: **R.W Tomlinson Limited**

ARCHITECT: **CHRISTOPHER SIMMONDS  
THE ANNEX / 45 ECCLES ST.  
OTTAWA, ONT.**

SITE: **NEW OFFICE BUILDING  
OTTAWA, ONT.**

TITLE: **SECURITY SECOND FLOOR  
DEVICES**

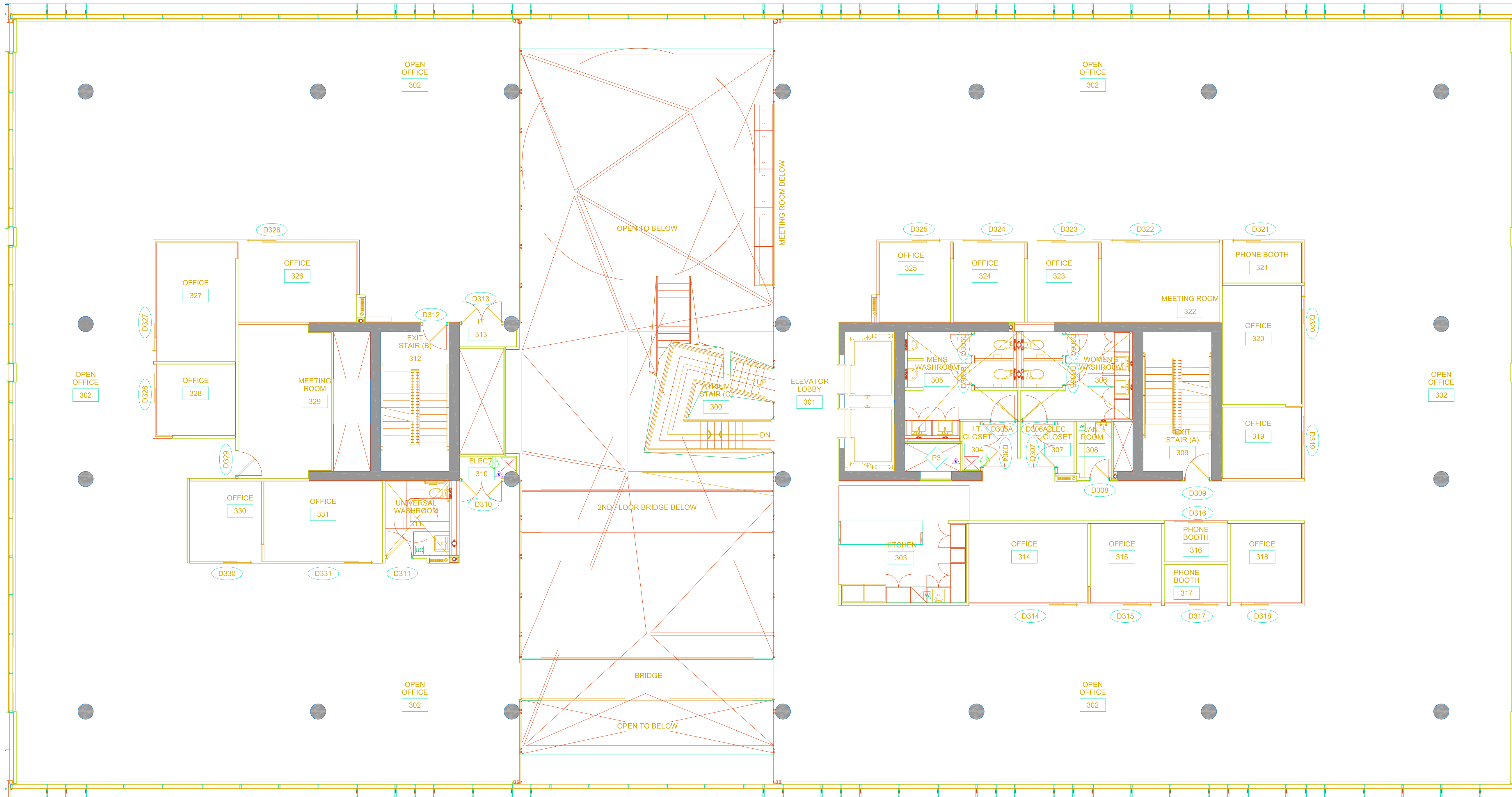
SCALE: AT A1:	DATE:	DRAWN:	CHECKED:
NTS	28/2/17	RB	GF
PROJECT NO:	DRAWING NO:	REVISION:	
25567	Security 005D	5	

Notes:

1. THE COPYRIGHT OF THIS DRAWING IS VESTED IN NOOGA CONSULTING INC. AND IT MAY NOT BE REPRODUCED IN WHOLE OR PART OR USED FOR THE MANUFACTURE OF ANY ARTICLE WITHOUT THE EXPRESS PERMISSION OF THE COPYRIGHT HOLDERS.

2. WORK TO FIGURED DIMENSIONS ONLY.

3. THIS DRAWING IS TO BE READ IN CONJUNCTION WITH ALL RELEVANT ARCHITECTS, SERVICE ENGINEER'S AND NOOGA CONSULTING DRAWINGS AND SPECIFICATIONS.



DEVICES LEGEND	
	PROX CARD READER
	LONG RANGE WIEGAND READER
	DOOR CONTACT, DOUBLE
	DOOR CONTACT, SINGLE
	DOOR CONTACT, HEAVY DUTY
	UTILITY CONTACT
	MOTION DETECTOR
	WATER DETECTOR
	HILO TEMPERATURE DETECTOR
	SECURITY KEYPAD
	SECURITY CAMERA, FIXED
	STROBE
	SIREN
	LOCAL SOUNDER
	FIRE INTERFACE (DPDT)
	SEE MOUNTING DETAIL ON DRAWING SECURITY 001A / CONDUIT DETAILS.
	CONTROLERS LOCATION
	ELECTRIC DOOR STRIKE
	ELECTROMAGNET
	EMERGENCY PULL STATION
	EXIT BUTTON
	HANDICAPPED BUTTON
	REX (request to exit) DEVICE
	LOCKDOWN BUTTON
	PANIC BAR
	DELAYED EGRESS TIMER (3-15)
	ELECTRIFIED MORTISE LOCK
	HORN
	BELL
	PANIC BUTTON
	MOTOR INTERFACE

REV.	DESCRIPTION:	BY:	DATE:
5	TENDER-FINAL	RB	28/2/17
4	TENDER	RB	15/01/17
3	MODIFICATIONS	RB	12/12/16
2	MODIFICATIONS	RB	8/31/16
1	PRELIMINARY	RB	8/23/16

STATUS: **FOR CONSTRUCTION**

**NOOGA CONSULTING INC.**  
  
 671 Norwood Rd.  
 RR#1 Salmon River  
 Hectanooga, Nova Scotia  
 514.984.2376  
[www.noogaconsulting.com](http://www.noogaconsulting.com)

CLIENT: **R.W Tomlinson Limited**

ARCHITECT: **CHRISTOPHER SIMMONDS  
 THE ANNEX / 45 ECCLES ST.  
 OTTAWA, ONT.**

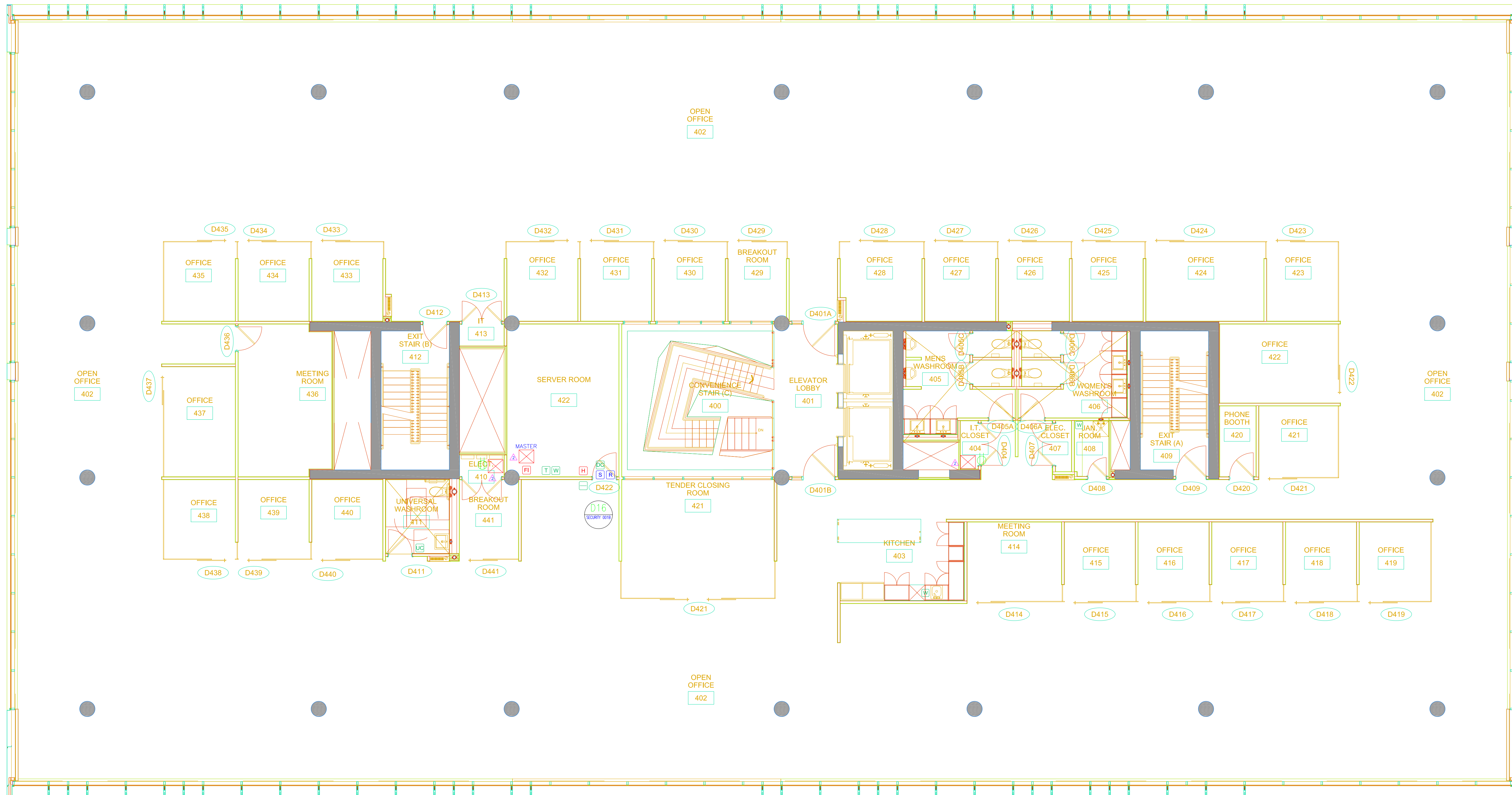
SITE: **NEW OFFICE BUILDING  
 OTTAWA, ONT.**

TITLE: **SECURITY THIRD FLOOR  
 DEVICES**

SCALE: AT A1:	DATE:	DRAWN:	CHECKED:
NTS	28/2/17	RB	GF
PROJECT NO:	DRAWING NO:	REVISION:	
25567	Security 006D	5	

Notes:

1. THE COPYRIGHT OF THIS DRAWING IS VESTED IN NOOGA CONSULTING INC. AND IT MAY NOT BE REPRODUCED IN WHOLE OR PART OR USED FOR THE MANUFACTURE OF ANY ARTICLE WITHOUT THE EXPRESS PERMISSION OF THE COPYRIGHT HOLDERS.
2. WORK TO FIGURED DIMENSIONS ONLY.
3. THIS DRAWING IS TO BE READ IN CONJUNCTION WITH ALL RELEVANT ARCHITECTS, SERVICE ENGINEER'S AND NOOGA CONSULTING DRAWINGS AND SPECIFICATIONS.



DEVICES LEGEND	
	PRX CARD READER
	LONG RANGE WIEGAND READER
	DOOR CONTACT, DOUBLE
	DOOR CONTACT, SINGLE
	DOOR CONTACT, HEAVY DUTY
	UTILITY CONTACT
	MOTION DETECTOR
	WATER DETECTOR
	HI/LO TEMPERATURE DETECTOR
	SECURITY KEYPAD
	SECURITY CAMERA, FIXED
	STROBE
	SIREN
	LOCAL SOUNDER
	FIRE INTERFACE (DPDT)
	MOTOR INTERFACE
	ELECTRIC DOOR STRIKE
	ELECTROMAGNET
	EMERGENCY PULL STATION
	EXIT BUTTON
	HANDICAPPED BUTTON
	REX (request to exit) DEVICE
	LOCKDOWN BUTTON
	PANIC BAR
	DELAYED EGRESS TIMER (3-15)
	ELECTRIFIED MORTISE LOCK
	HORN
	BELL
	PANIC BUTTON
	MOTOR INTERFACE
	SEE MOUNTING DETAIL ON DRAWING SECURITY 001A / CONDUIT DETAILS.
	CONTROLLERS LOCATION

5	TENDER-FINAL	RB	28/2/17
4	TENDER	RB	15/01/17
3	MODIFICATIONS	RB	12/12/16
2	MODIFICATIONS	RB	8/31/16
1	PRELIMINARY	RB	8/23/16

REV: DESCRIPTION: BY: DATE:

STATUS: **FOR CONSTRUCTION**

NOOGA CONSULTING INC.  
  
 671 Norwood Rd.  
 RR#1 Salmon River  
 Hectanooga, Nova Scotia  
 514.984.2376  
[www.noogaconsulting.com](http://www.noogaconsulting.com)

CLIENT: **R.W Tomlinson Limited**

ARCHITECT: **CHRISTOPHER SIMMONDS  
 THE ANNEX / 45 ECCLES ST.  
 OTTAWA, ONT.**

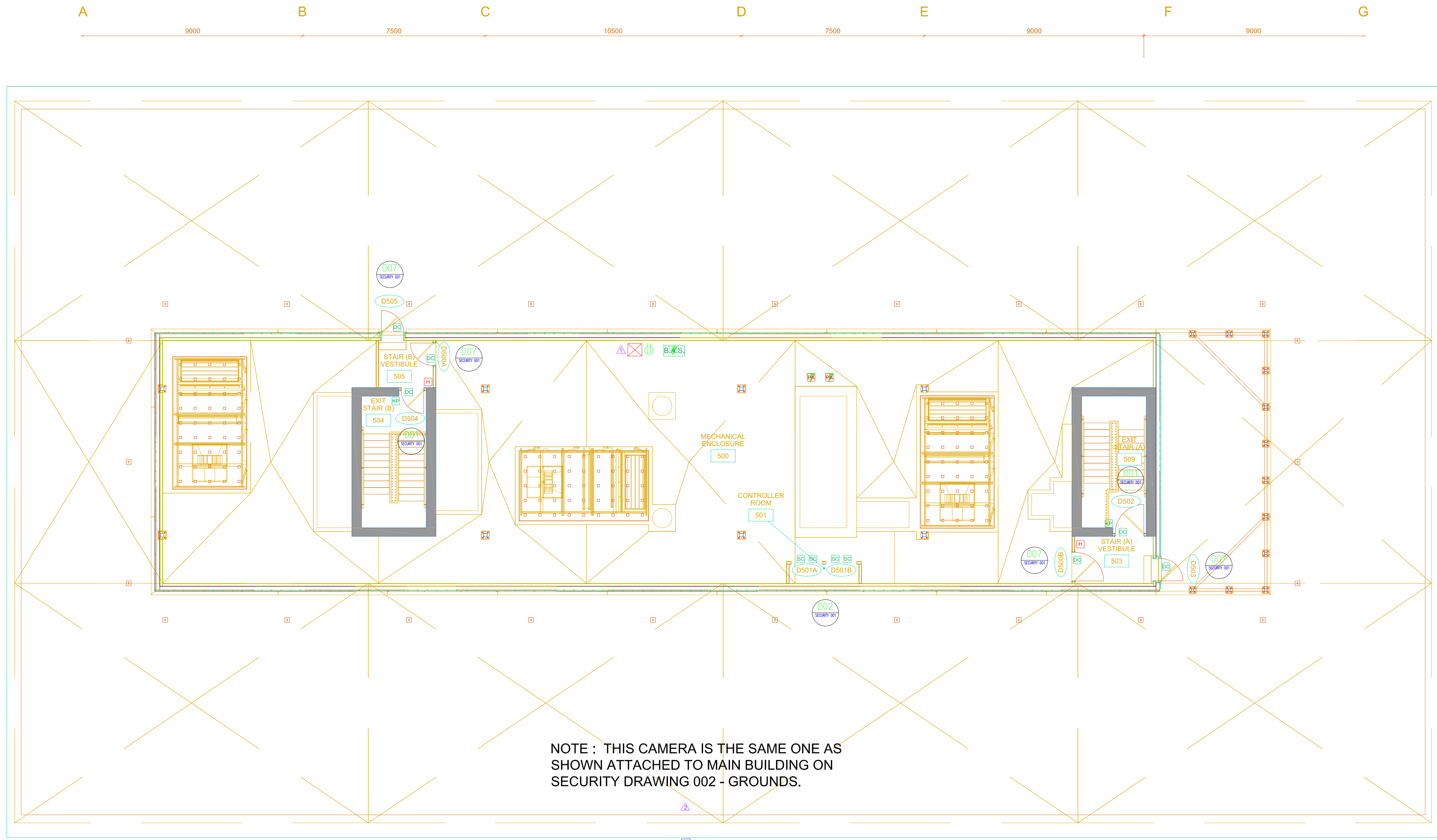
SITE: **NEW OFFICE BUILDING  
 OTTAWA, ONT.**

TITLE: **SECURITY FOURTH FLOOR  
 DEVICES**

SCALE AT A1:	DATE:	DRAWN:	CHECKED:
NTS	28/2/17	RB	GF
PROJECT NO:	DRAWING NO:	REVISION:	
25567	Security 007D	5	

Notes:

1. THE COPYRIGHT OF THIS DRAWING IS VESTED IN NOOGA CONSULTING INC. AND IT MAY NOT BE REPRODUCED IN WHOLE OR PART OR USED FOR THE MANUFACTURE OF ANY ARTICLE WITHOUT THE EXPRESS PERMISSION OF THE COPYRIGHT HOLDERS.
2. WORK TO FIGURED DIMENSIONS ONLY.
3. THIS DRAWING IS TO BE READ IN CONJUNCTION WITH ALL RELEVANT ARCHITECTS, SERVICE ENGINEER'S AND NOOGA CONSULTING DRAWINGS AND SPECIFICATIONS.



NOTE : THIS CAMERA IS THE SAME ONE AS SHOWN ATTACHED TO MAIN BUILDING ON SECURITY DRAWING 002 - GROUNDS.

DEVICES LEGEND			
	PRGX CARD READER		ELECTRIC DOOR STRIKE
	LONG RANGE WIEGAND READER		ELECTROMAGNET
	DOOR CONTACT, DOUBLE		EMERGENCY PULL STATION
	DOOR CONTACT, SINGLE		EXIT BUTTON
	DOOR CONTACT, HEAVY DUTY		HANDICAPPED BUTTON
	UTILITY CONTACT		REX (request to exit) DEVICE
	MOTION DETECTOR		LOCKDOWN BUTTON
	WATER DETECTOR		PANIC BAR
	HILO TEMPERATURE DETECTOR		DELAYED EGRESS TIMER (3-15)
	SECURITY KEYPAD		ELECTRIFIED MORTISE LOCK
	SECURITY CAMERA, FIXED		KEYSWITCH
	STROBE		HORN
	SIREN		BELL
	LOCAL SOUNDER		PANIC BUTTON
	FIRE INTERFACE (DPDT)		MOTOR INTERFACE
	CONTROLLER LOCATION		
<small>ONE 2mm CONDUIT PER CAMERA. TERMINATE CONDUIT RUN ON A PVC BOX 8"X6"X4" AFFIXED TO BUILDING. MAINTAIN IP 66 RATING WHEN PENETRATING BOX. EXACT HEIGHT &amp; DETAILS TBD.</small>			

5	TENDER-FINAL	RB	28/2/17
4	TENDER	RB	15/01/17
3	DESIGN_MODIFICATIONS	RB	12/12/2016
2	DESIGN_MODIFICATIONS	RB	8/31/2016
1	PRELIMINARY	RB	8/23/2016
REV:	DESCRIPTION:	BY:	DATE:

STATUS: **FOR CONSTRUCTION**

**NOOGA CONSULTING INC.**  
  
 671 Norwood Rd.  
 RR#1 Salmon River  
 Hectanooga, Nova Scotia  
 514.984.2376  
[www.noogaconsulting.com](http://www.noogaconsulting.com)

CLIENT: **R.W Tomlinson Limited**

ARCHITECT: **CHRISTOPHER SIMMONDS  
 THE ANNEX / 45 ECCLES ST.  
 OTTAWA, ONT.**

SITE: **NEW OFFICE BUILDING  
 OTTAWA, ONT.**

TITLE: **SECURITY PENTHOUSE  
 DEVICES**

SCALE AT A1:	DATE:	DRAWN:	CHECKED:
NTS	28/2/17	RB	GF
PROJECT NO:	DRAWING NO:	REVISION:	
25567	Security 008D	5	