

GENERAL NOTES:

- ALL PRODUCTS PROVIDED BY CANAM STEEL WORKS IN CONNECTION WITH THIS DRAWING ARE SUBJECT TO CANAM STEEL WORKS STANDARD TERMS AND CONDITIONS FOR JOIST SALES. BY ACCEPTING THE PRODUCT, THE PURCHASER ACKNOWLEDGES THAT THEY HAVE RECEIVED AND REVIEWED THESE TERMS AND CONDITIONS.
- MINIMUM DESIGN REQUIREMENTS TO BE PER CAN/CSA S16.0 STANDARD (AND CESSI SPECIFICATION WHEN DECK IS SUPPLIED BY CANAM) LATEST EDITION, UNLESS OTHERWISE NOTED HEREIN.
- PAINT: GREY PRIMER U.N.O. ON PLAN (SPECIFICATIONS PROVIDED UPON REQUEST)
- THE ISSUANCE OF THIS DRAWING DOES NOT CONSTITUTE THE ACCEPTANCE OF A CUSTOMER'S ORDER.
- THE DESIGN IS BASED UPON LOAD INFORMATION SPECIFICALLY SUBMITTED TO CANAM STEEL WORKS. NO SPECIAL LOADS OR OTHER FORCES HAVE BEEN PROVIDED FOR UNLESS PURCHASER HAS REQUESTED THEM IN WRITING. SUCH SPECIAL LOADS OR OTHER FORCES SHALL INCLUDE, WITHOUT LIMITATION: UPLIFT, CONCENTRATED LOADS FROM ROOF TOP UNITS, AXIAL LOADS FROM KICKER ANGLES, ETC.
- CANAM'S ERECTION DRAWINGS HEREIN WERE PREPARED USING THE STRUCTURAL PORTION OF THE CONTRACT DRAWINGS AS ITS PRIMARY GUIDE USING THE ARCHITECTURAL DRAWINGS (WHEN PROVIDED) ONLY FOR MISSING INFORMATION OR FOR CLARIFICATION. CANAM DOES NOT ACCEPT ANY RESPONSIBILITY FOR DISCREPANCIES BETWEEN THE STRUCTURAL AND ARCHITECTURAL DRAWINGS.

CONTRACTOR NOTES:

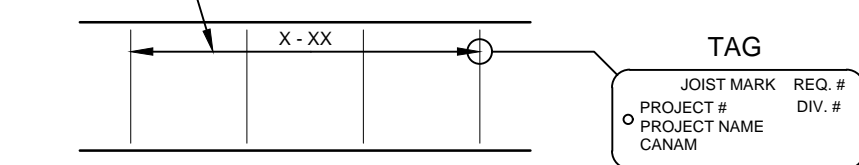
- OWSJ TOP CHORDS AND SEAT WIDTHS MAY VARY.
- FOR A COMPLETE PACKAGE OF CANAM STANDARDS & CONNECTION DETAILS GO TO www.canamgroupinc.com OR CONTACT YOUR CANAM OFFICE.
- CONFIRM ALL JOIST SHOE DEPTHS WITH CANAM PRIOR TO DETAILING OF SUPPORTING STEEL.
- REVIEW ENCLOSED LAYOUT FOR CONFORMANCE AND CONNECTION METHODS. INFORM CANAM OF ANY MISINTERPRETED CONNECTION DETAILS OR DIMENSIONAL DISCREPANCIES TO ENSURE AS BUILT CONDITIONS ARE SATISFIED.
- CONTRACTOR TO CONFIRM OR SUPPLY ALL CLOUDED INFORMATION WHERE SHOWN ON PLAN.

APPROVAL NOTES: (IF APPLICABLE)

- PLEASE REVIEW THESE DRAWINGS CAREFULLY, IT REPRESENTS OUR INTERPRETATION OF THE CONTRACT DOCUMENTS.
- THE GENERAL CONTRACTOR IS TO INFORM CANAM OF ANY INTERFERENCE BETWEEN MECHANICAL UNITS, DUCTWORK AND JOIST / BRIDGING.
- SUBSEQUENT CHANGES TO INFORMATION SHOWN ON THESE DRAWINGS AFTER FIRST SUBMISSION COULD BE CONSIDERED AS CONTRACT CHANGES. IF CONSIDERED A CONTRACT CHANGE THE ARCHITECT / ENGINEER SHOULD BE INFORMED IN WRITING.
- UNLESS NOTED TO THE CONTRARY ON THESE DRAWINGS WHEN RETURNED FROM APPROVAL, IT WILL BE CONSIDERED THAT THE INFORMATION SHOWN HEREIN HAS BEEN ACCEPTED BY ALL PARTIES.
- TO MEET DELIVERY REQUIREMENTS THIS PROJECT WILL BE ISSUED FOR FABRICATION WITH THIS RETURNED APPROVAL. JOIST REINFORCING OR ADDITIONAL MATERIAL REQUIRED DUE TO MISSING LOADS SUCH AS MECHANICAL UNITS AND SPRINKLER INFORMATION RECEIVED AFTER ISSUE FOR FABRICATIONS WILL BE CONSIDERED AT OWNERS EXPENSE.
- APPROVER TO CONFIRM OR SUPPLY ALL CLOUDED INFORMATION WHERE SHOWN ON PLAN.
- ESFR SPRINKLER SYSTEMS - DOCUMENTS INCLUDING DIMENSIONED LOCATIONS OF ALL SPRINKLER LINES TO BE PROVIDED TO CANAM TO ENSURE INTERFERENCE REQUIREMENTS ARE RESPECTED. IF THIS CANNOT BE PROVIDED WHEN FABRICATION COMMENCES, CANAM WILL PROVIDE THE REQUIRED DOCUMENTS SHOWING THE EXACT LOCATIONS OF ALL MEMBERS INCLUDED.

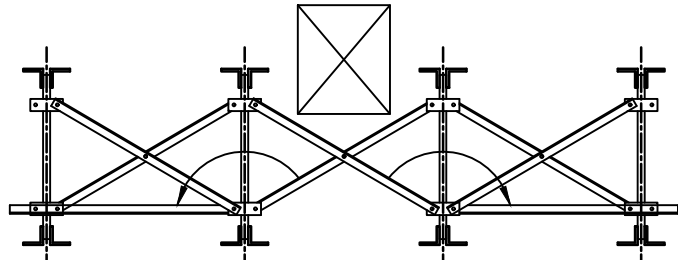
ERECTOR NOTES:

- THIS DRAWING IS TO BE USED ONLY FOR THE ERECTION OF PRODUCTS SUPPLIED BY CANAM STEEL WORKS AS INDICATED BY AN ERECTION MARK ON THE PLANS AND/OR SECTIONS.
- CANAM STEEL WORKS IS NOT RESPONSIBLE FOR THE HANDLING AND ERECTION OF MATERIALS IT SUPPLIES. THE DESIGN AND MANUFACTURE OF THE MATERIALS ASSUMES THAT THEY ARE HANDLED IN ACCORDANCE WITH ALL APPLICABLE LAWS AND REGULATIONS. CANAM STEEL WORKS IS NOT RESPONSIBLE FOR ANY MISHANDLING OR FAILURE TO PROPERLY ERECT THE MATERIALS.
- CANAM STEEL WORKS HAS NOT EXAMINED ANY FIELD CONDITIONS AND ASSUMES NO RESPONSIBILITY FOR ANY SITE CONDITIONS. THE PURCHASER MUST NOTIFY CANAM STEEL WORKS OF ANY DISCREPANCIES BETWEEN THE FIELD CONDITIONS AND CANAM STEEL WORKS FILE AND FIELD USE DRAWINGS.
- ANY MODIFICATION OF MATERIAL SUPPLIED BY CANAM STEEL WORKS WITHOUT PRIOR WRITTEN CONSENT WILL AUTOMATICALLY RELEASE CANAM FROM ALL LIABILITY WITH RESPECT TO SUCH MATERIAL.
- OWSJ MUST BE PERMANENTLY FASTENED IN PLACE AND BRIDGING ATTACHED BY WELDING OR BOLTING AS SHOWN BEFORE ANY CONSTRUCTION LOADS ARE APPLIED. ALL FIELD WELDING TO BE CARRIED OUT BY WELDERS APPROVED BY C.W.B. TO THE REQUIREMENTS OF C.S.A. -W47 AND W59
- BOLTED CONNECTIONS (BRIDGING AND JOISTS) SHALL BE "SHUG TIGHT". THE 2004 RCSC SPECIFICATION DEFINES IT AS A JOINT IN WHICH THE BOLTS HAVE BEEN INSTALLED IN ACCORDANCE WITH SECTION 8.1. NOTE THAT NO SPECIFIC LEVEL OF INSTALLED TENSION IS REQUIRED TO ACHIEVE THIS CONDITION, WHICH IS COMMONLY ATTAINED AFTER A FEW IMPACTS OF AN IMPACT WRENCH OR THE FULL EFFORT OF AN IRONWORKER WITH AN ORDINARY SPUD WRENCH. THE PLIES SHOULD BE IN FIRM CONTACT, A CONDITION THAT MEANS THE PLIES ARE SOLIDLY SEATED AGAINST EACH OTHER, BUT NOT NECESSARILY IN CONTINUOUS CONTACT.
- BACK CHARGES FOR REPAIRS OR ALTERATION TO CANAM PRODUCTS WILL NOT BE ACCEPTED UNLESS APPROVED PRIOR BY CANAM STEEL.
- JOISTS TO BE ERECTED SO THAT THE METAL TAG AT ONE END CORRESPONDS WITH THE END OF THE JOIST WHERE THE MARK IS LOCATED ON THE PLAN THUS:



BRIDGING INTERFERENCE/REMOVAL

- REMOVE BRIDGING FROM LOCATION OF DESIRED OPENING.
- RELOCATE REMOVED BRIDGING MEMBERS AS SHOWN BELOW.
- BOLT OR WELD RELOCATED BRIDGING AS REQUIRED. SEE STANDARD BRIDGING DETAILS FOR MIN. WELD REQUIREMENTS.



MAX. JOIST SPACING	MIN. HORIZ. BRIDGING SIZE
≤ 1720 / 5' - 7"	L 1 1/4" x 1 1/4"
≤ 2240 / 7' - 4"	L 1 1/2" x 1 1/2"
≤ 2620 / 8' - 7"	L 1 3/4" x 1 3/4"
≤ 2970 / 9' - 9"	L 2" x 2"

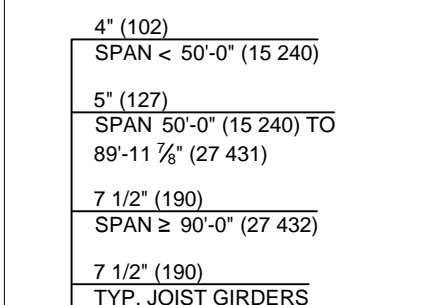
- IF SPACING IS GREATER THAN SHOWN, CONTACT CANAM
- SIMILAR CONCEPT TO BE APPLIED FOR WELDED BRIDGING

GENERAL JOIST/GIRDER SHOE INFORMATION:

NOTE: ALL ENCLOSED DETAILS AND INFORMATION MUST BE VERIFIED ON PLAN IF NOTED OTHERWISE. DETAILS ARE INTENDED AS STANDARD BUT MAY VARY WITH SPECIFIC CONTRACTOR, PROJECTS AND/OR CONDITIONS. ANY DISCREPANCIES BETWEEN GENERAL INFORMATION AND THE PLAN, THE PLAN WILL BE CONSIDERED AS CORRECT.

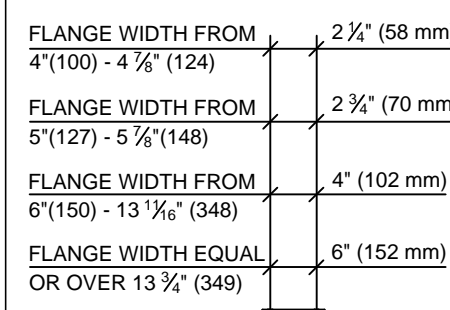
STANDARD SHOE DEPTHS

- VERIFY ALL SHOE DEPTHS WITH CANAM OR PLAN DRAWING PRIOR TO ANY DETAILING OF SUPPORTING MEMBERS.
- STANDARD SHOE DIMENSIONS VARY ACCORDING TO PRODUCT AND SPAN.



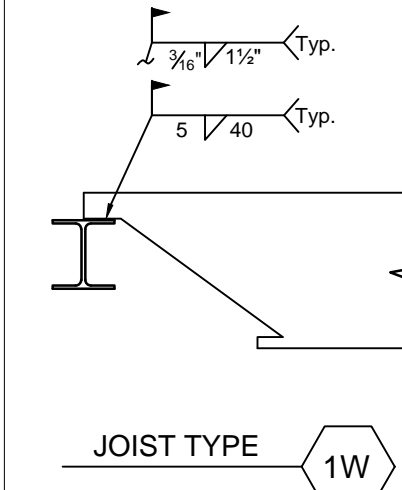
STANDARD GAUGES

- WHEN ONE JOIST BEARS AT THE JUNCTION OF TWO DIFFERENT BEAMS, THE SMALLER GAUGE IS TO BE USED.
- DESIGN CONDITIONS CAN DICTATE VARIANCES FOR THESE CONNECTIONS. FOR COORDINATION CONTACT CANAM.



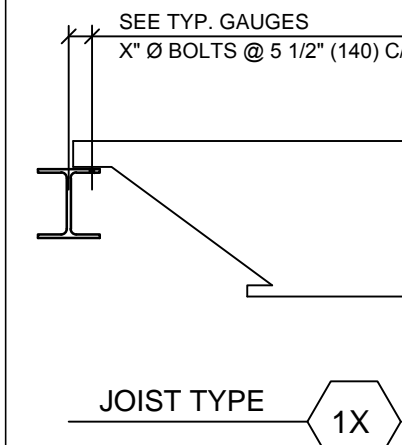
STANDARD WELDED SHOE

- ONLY IF APPLICABLE - SEE PLAN
- U.N.O. ON PLAN



STANDARD BOLTED SHOE

- ONLY IF APPLICABLE - SEE PLAN
- U.N.O. ON PLAN
- BOLTS NOT SUPPLIED BY CANAM



* GIRDERS - 1/2" x 1/2" BOLTS @ 6" (152) C/C *

STANDARD BRIDGING DETAILS:

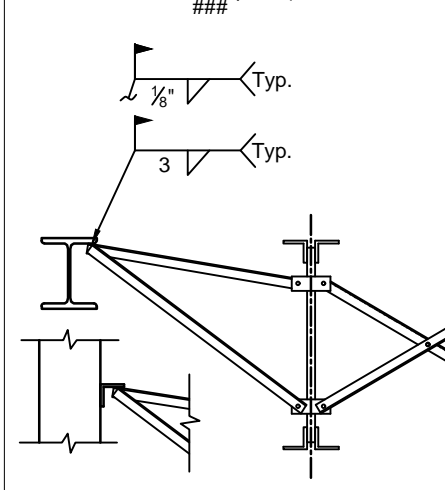
IMPORTANT NOTE: SEE PLAN FOR ADDITIONAL BRIDGING/BRACING DETAILS AND INSTRUCTIONS IF APPLICABLE.

TYP. BOLTED BRIDGING

- ONLY IF APPLICABLE - SEE PLAN
- CANAM WILL PROVIDE MATERIAL SPECIFICATIONS UPON REQUEST.
- LOCATIONS OF X-BRIDGING NOT TO BE SCALED ON PLAN, EXACT LOCATIONS CAN BE REQUESTED IF REQUIRED.

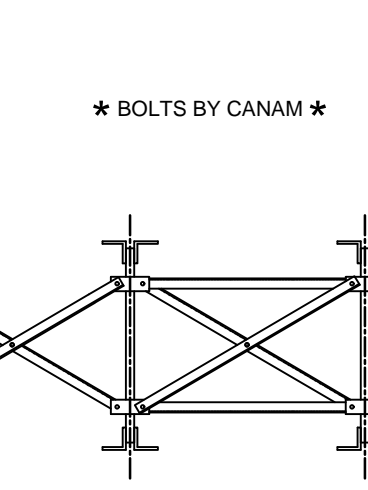
END BAY - JOIST TO BEAM/WALL

SHOWN THUS:



END BAY - JOIST TO JOIST

SHOWN THUS:

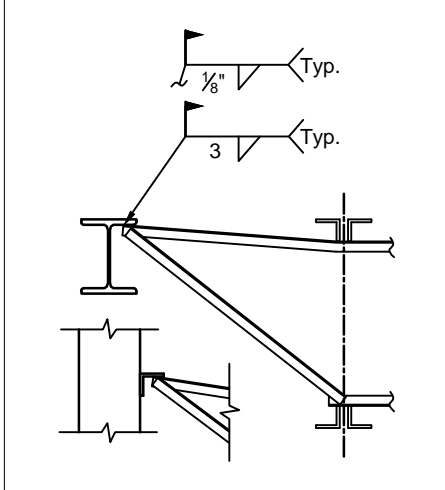


TYP. WELDED HORIZONTAL BRIDGING

- SEE PLAN FOR MATERIAL SIZES AND SPECIFICATIONS.
- SEE PLAN FOR LOCATIONS OF WELDED HORIZONTAL BRIDGING. DO NOT SCALE THE PLAN.
- HORIZONTAL BRIDGING CAN BE REQUIRED ON THE TOP AND/OR BOTTOM CHORDS. SEE PLAN SHOWN THUS: T & B
- BRIDGING SPLICE/LAP TO BE MAXIMUM 100 mm (4").
- QUANTITIES OF HORIZONTAL BRIDGING DETERMINED USING (O/A LENGTH (x) # ROWS) (+) 4%

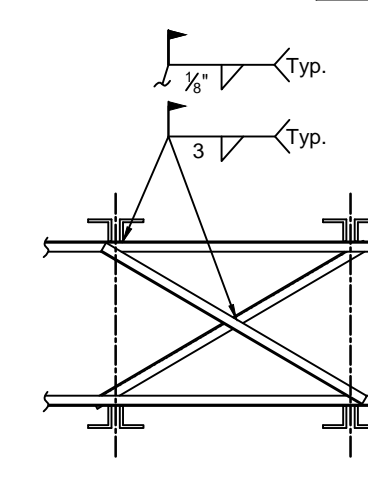
END BAY - JOIST TO BEAM/WALL

SHOWN THUS:



END BAY - JOIST TO JOIST

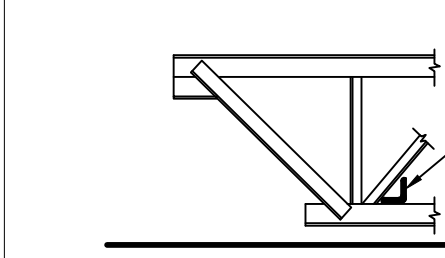
SHOWN THUS:



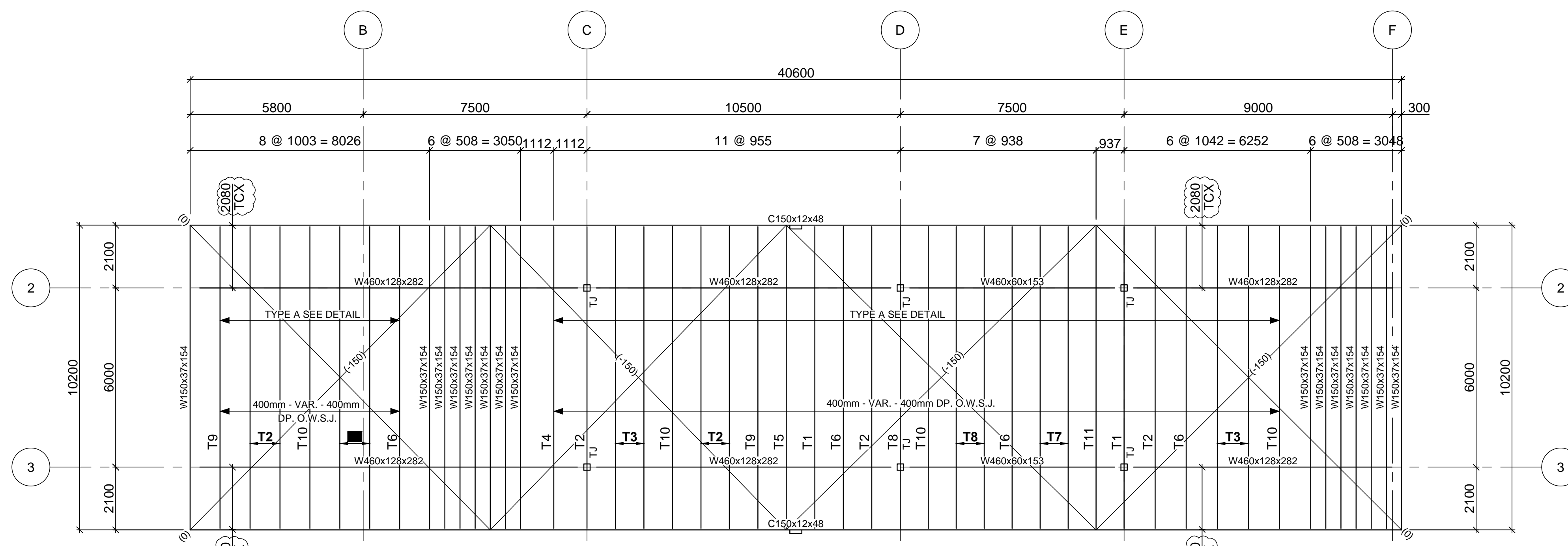
TYP. WELDED HORIZONTAL UPLIFT BRIDGING

- SEE PLAN FOR MATERIAL SIZES AND SPECIFICATIONS.
- SEE PLAN FOR LOCATIONS OF WELDED HORIZONTAL UPLIFT BRIDGING. LOCATED AT FIRST AND LAST PANEL POINTS TYP. U.N.O. ON PLAN.
- FOR INSTALLATION PROCEDURE SEE "TYP. WELDED HORIZONTAL BRIDGING" DETAILS ABOVE AND SUBTRACT TOP ROW EXCEPT AT JOIST TO JOIST END BAYS.

SHOWN THUS:



BRIDGING BUNDLING



ENSURE COMPLIANCE WITH CJE'S NOTES ON S105:

PENTHOUSE ROOF NOTES:

1. DESIGN LOADS:

DEAD: DECK:	0.10 kPa
JOISTS:	0.25 kPa
CEILING:	0.25 kPa
MECH.:	0.25 kPa
ROOFING:	0.80 kPa
LIVE: ROOF:	1.00 kPa
SNOW:	2.40 kPa + DRIFT UN

NOTES:

DESIGN OWSJ SHOES FOR THE FOLLOWING ULTIMATE ROLL OVER FORCES (PLUS APPLICABLE AMPLIFICATION FACTORS) DUE TO SEISMIC LOADS: 15 kN (APPLIED AT TOP OF JOIST SHOE)

← DENOTES COLLECTOR FORCES MULTIPLY VALUES BY 1.5 FOR CONNECTION DESIGN.

REVIEWED	<input type="checkbox"/>
NOT REVIEWED	<input type="checkbox"/>
REVIEWED AS NOTED	<input checked="" type="checkbox"/>
REVISED/SUBMIT	<input type="checkbox"/>

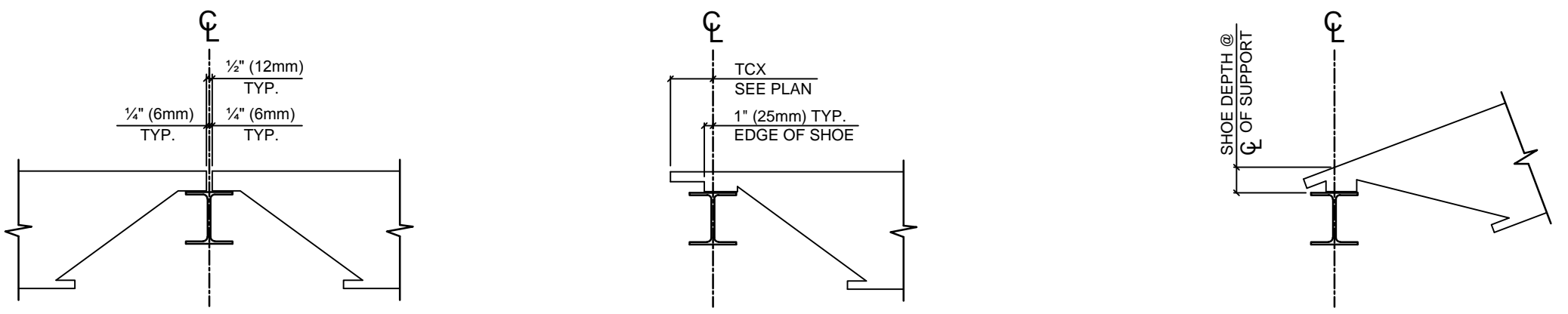
DATE: DEC 20 2016

THIS IS A REVIEW ONLY OF CONFORMANCE WITH THE GENERAL DESIGN CONCEPT, AND NOT A CHECK ON QUANTITIES, DETAILS OR DIMENSIONS WHICH ARE THE CONTRACTOR'S SOLE RESPONSIBILITY IN ORDER TO MEET ALL REQUIREMENTS OF THE CONTRACT DOCUMENTS.

REGISTERED PROFESSIONAL ENGINEER
STRUCTURAL ENGINEER

STANDARD TYPICAL OWSJ BEARING CONDITIONS

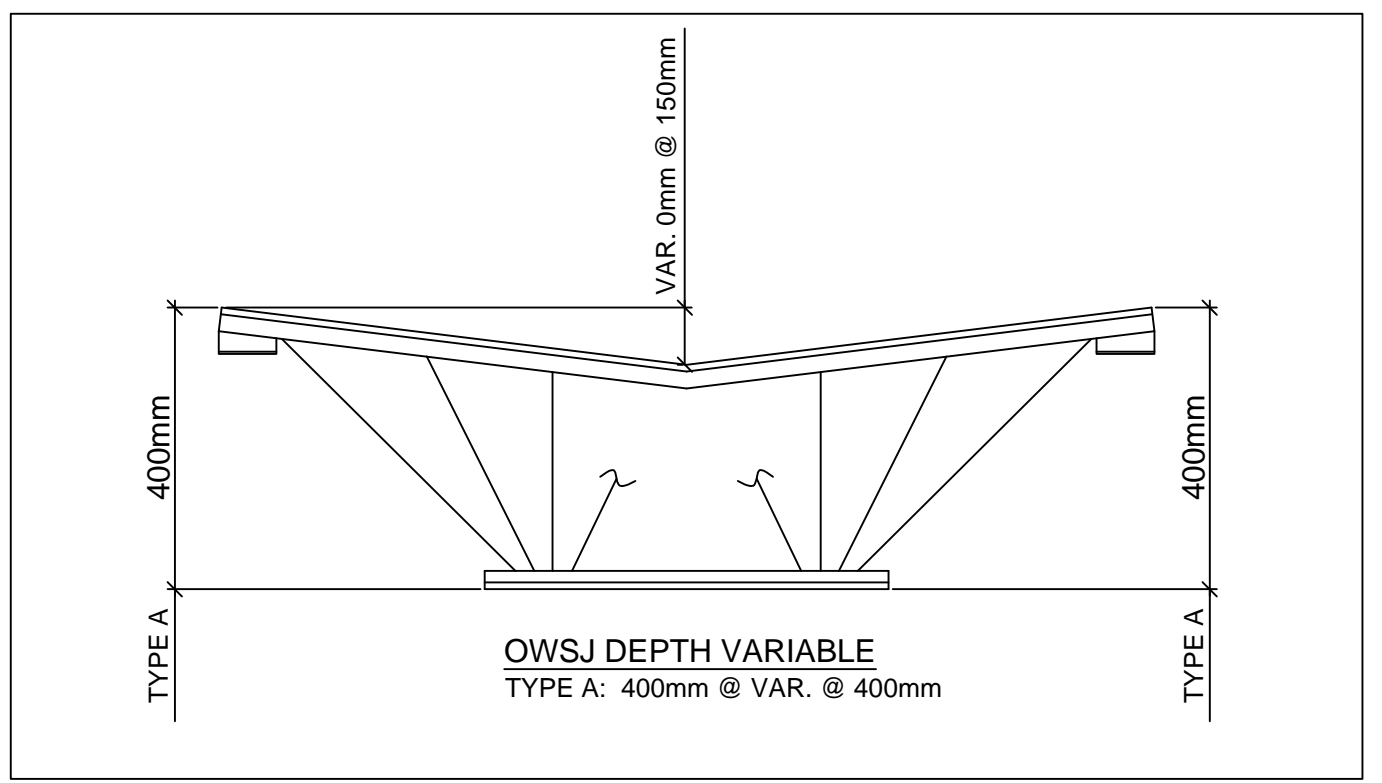
NOTE: TYPICAL UNLESS NOTED OTHERWISE ON PLAN OR SECTION DETAILS.



- EACH OWSJ REQUIRES A MIN. 2 1/2" (65mm) OF BEARING ON SUPPORT.
- SHOE CONFIGURATION CAN VARY. VERIFY WITH TCX AS SHOWN ON PLAN.
- SUPPORTING MEMBER ELEVATION MUST MAKE ALLOWANCE FOR SUFFICIENT SHOE DEPTH WHEN TOP FLANGE HAS SIGNIFICANT SLOPE.

LEGEND

- BC --- BOTTOM CHORD
- BCX --- BOTTOM CHORD EXTENSION
- T --- BRIDGING @ TOP ONLY
- B --- BRIDGING @ BOTTOM ONLY
- T & B --- BRIDGING @ TOP & BOTTOM
- C/C --- CENTER TO CENTER
- (XXX) --- CHANGE IN ELEVATION
- EOD --- EDGE OF DECK
- FOW --- FACE OF WALL
- F/S --- FAR SIDE
- (X) --- JOIST CONNECTION TYPES
- KB --- KNEE BRACE
- LBCX --- LOOSE BOTTOM CHORD EXT.
- N/S --- NEAR SIDE
- O/A --- OVER ALL
- Sh(X) --- SHOE DEPTHS
- SM --- SIMILAR
- TJ --- TIE JOIST
- TC --- TOP CHORD
- TCX --- TOP CHORD EXTENSION
- TOS --- TOP OF STEEL
- TYP. --- TYPICAL
- UNO --- UNDER SIDE UNLESS NOTED OTHERWISE
- VIF --- VERIFY IN FIELD



REVIEWED
By Chris Simpson at 3:45 pm, Dec 13, 2016

FOR APPROVAL
(DO NOT USE FOR FABRICATION OR ERECTION)



ST. GEORGE (QC) 1-888-849-5910 - email: gideon.draw@canamgroupinc.com
MISSISSAUGA (ON) 1-800-446-8897 - email: toronto.drafting@canamgroupinc.com
MONCTON (NS) 1-800-210-7833 - email: moncton.draw@canamgroupinc.com
CALGARY (AB) 1-866-203-2001 - email: calgary.drafting@canamgroupinc.com

REVISION NO:	DATE:	DESCRIPTION:
A	DEC. 13/2016	DRAWING FOR APPROVAL ONLY, DIV. 01

CANAM ENGINEER SEAL:

CANAM BUILDINGS

PROJECT NAME: TOMLINSON NEW BUILDING
LOCATION: OTTAWA, ON
TITLE: PENTHOUSE ROOF JOIST FRAMING PLAN
CUSTOMER: COR-TEK INDUSTRIAL SERVICES
ENGINEER: [Signature]
DRAWN BY: IDO/AG
CHECKED BY: [Signature]

DATE: 04-NOV-16
DATE: [Signature]

PLANT: MONCTON
PROJECT: S08380
DRAWING NO: JE1