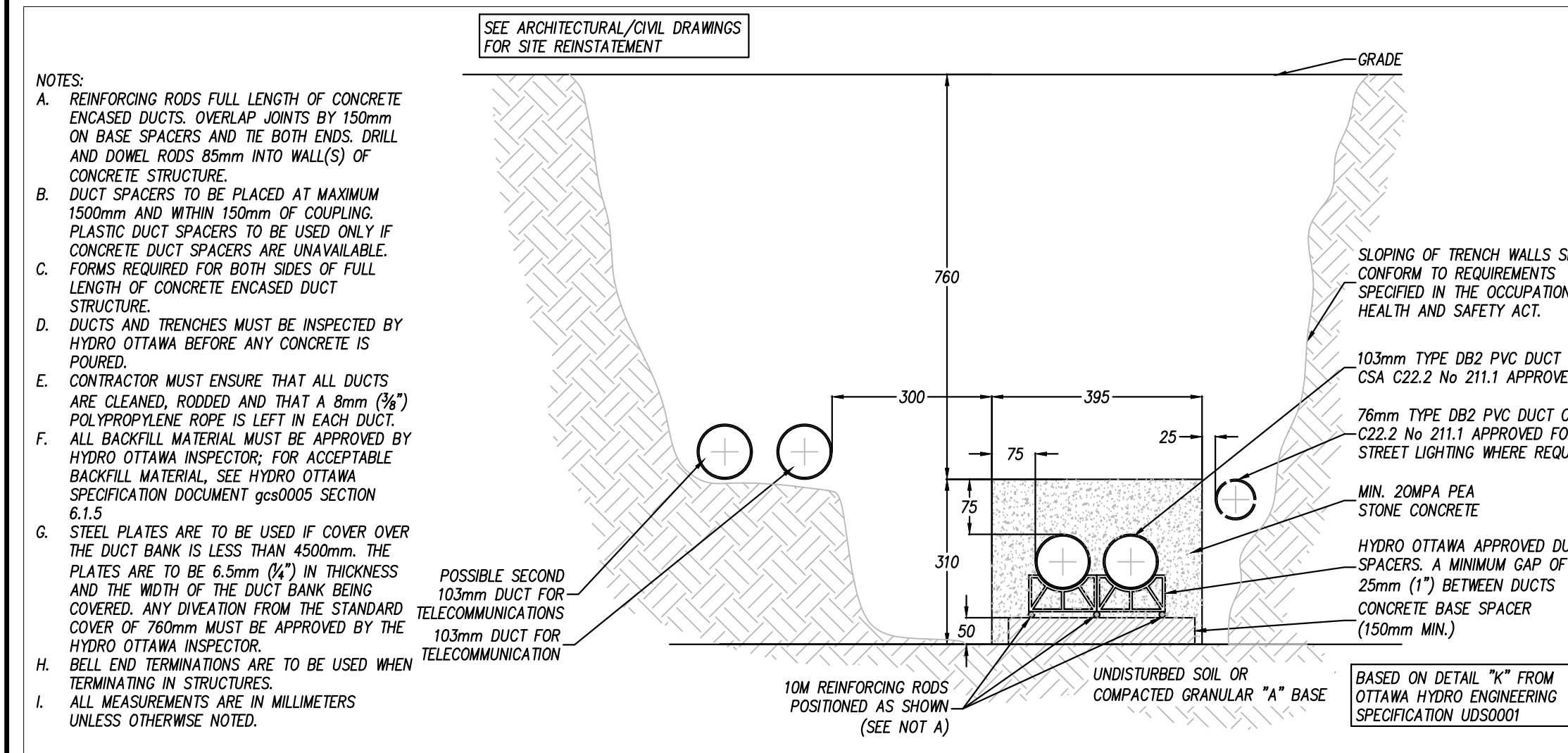


CONSTRUCTION DATA TABLE					
WORK LOCATION #	NOMENCLATURE ID#	TABLE OF UG OR OH STRUCTURE OR DEVICE	CIVIL STANDARDS	ELECTRICAL STANDARDS	INSTRUCTIONS
L1	X283708HH S27895	POLE LATERAL	UDS0023	OGS0001	CIVIL UDS0023 - DETAIL B + E NEW GROUND ROD TO BE INSTALLED (IF REQUIRED)
L2		1H X 2W CONCRETE ENCASED DUCT STRUCTURE	UDS0001 UDS0032 UDC0032		CIVIL UDS0001 - DETAIL K 1.5m LARGE RADIUS BEND ELECTRICAL UDS0032 INSTALL 1/0 AL 15kV CABLE FROM S27895 TO TP11968
L3		1H X 2W DIRECT BURIED DUCT STRUCTURE			CIVIL DIRECT BURIED DUCT STRUCTURE TO BE ABANDONED ELECTRICAL EXISTING PRIMARY CABLE TO BE REMOVED

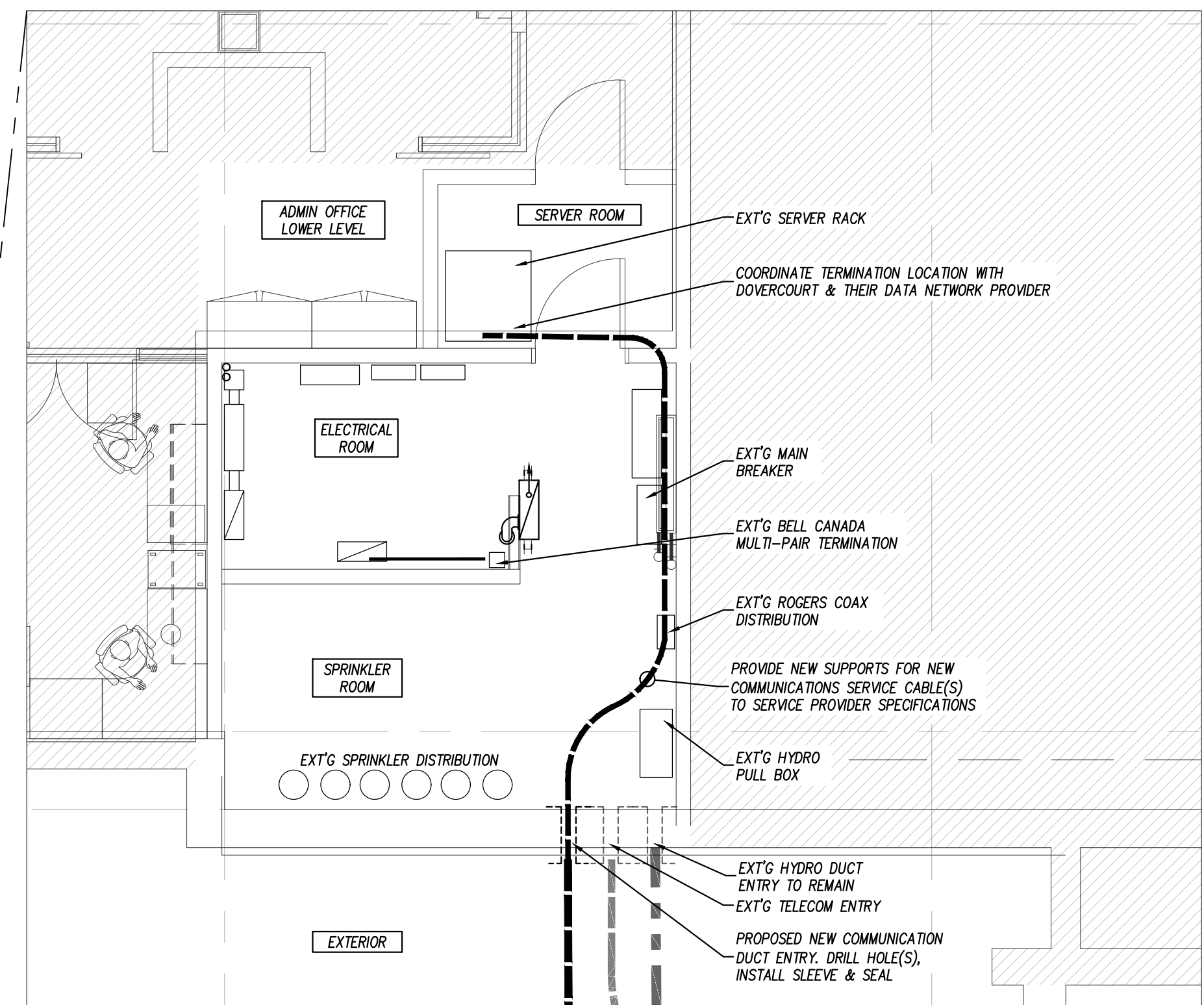
- NOTES:
- Hydro Ottawa will hire an approved contractor to complete all civil work within 2.0m of energized equipment.
 - Hydro Ottawa will be responsible for installing the bollards and grounding around the existing padmount transformer. Reinstatement completed by owner's (project) contractor.
 - Hydro Ottawa will be responsible for the concrete pole lateral and 2.0m of concrete encased duct structure around the existing pole.
 - Hydro Ottawa Qualified Contractor to complete the scope of civil work from existing duct structure located 2.0m from transformer to within 2.0m of the existing service pole.
 - All duct structure work, including backfill to be carried out by Hydro Ottawa approved contractor.

INFORMATION PROVIDED BY HYDRO OTTAWA

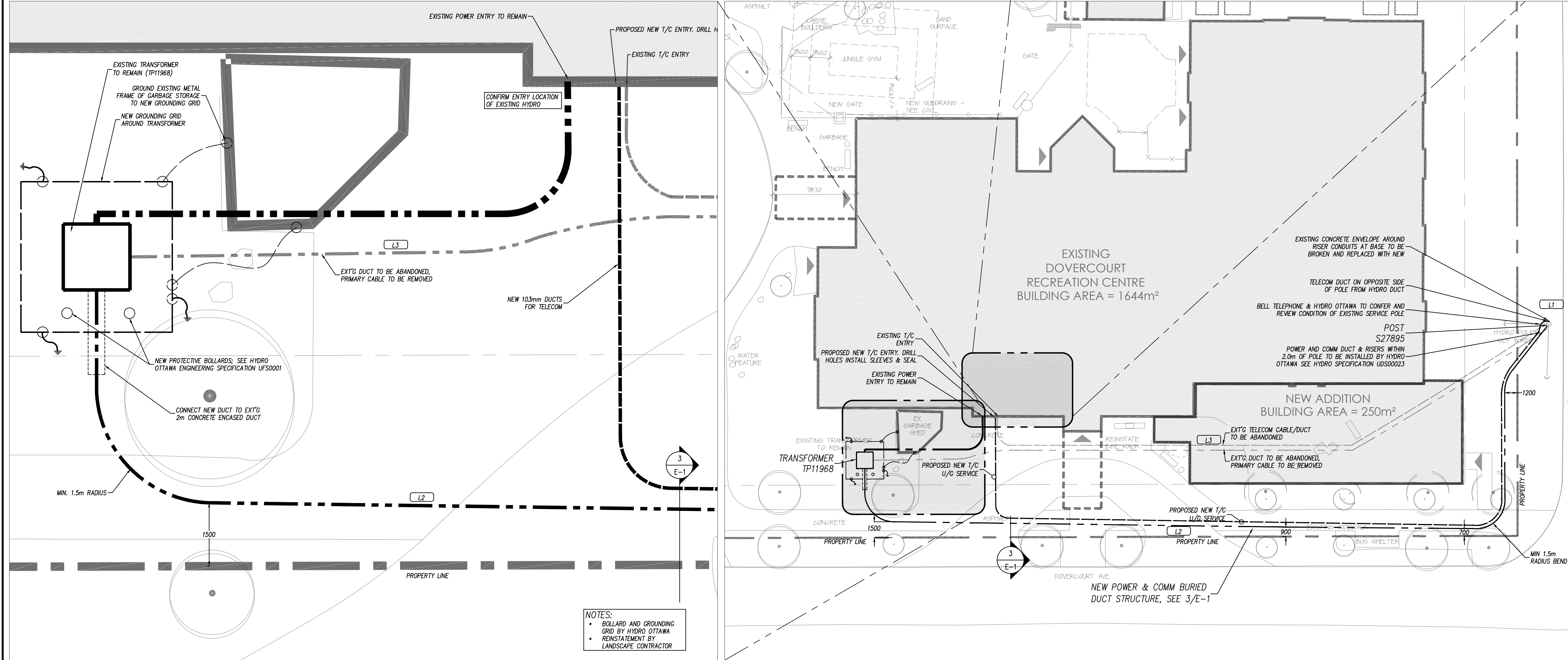


3 POWER DUCT SECTION DETAIL
E-1 1:10

- GENERAL NOTES
- All construction shall be completed using approved Hydro Ottawa construction standards (latest edition) and/or details specified in the project drawing(s).
 - External workforces may obtain the latest edition of applicable Hydro Ottawa standards and/or design specifications at www.hydroottawa.com.
 - Prior to undertaking work within the safe limits of approach to Hydro Ottawa overhead plant (as defined in the Occupational Health and Safety Act), contact the designated Hydro Ottawa project manager or Hydro Ottawa Service Desk at 613-738-6400, Option 4.
 - Obtain utility locates prior to commencement of any excavation.
 - Where excavation within 1.5 metres of Hydro Ottawa underground plant, contact the designated Hydro Ottawa project manager or Hydro Ottawa Service Desk at 613-738-6400, Option 4.
- PROJECT NOTES
- Where existing grades are greater or less than 150mm of final grade, grade stakes indicating final grade shall be provided at, or along each installation as required by Hydro Ottawa.
 - As-built drawing(s) shall be completed for this project. Each drawing issued for construction shall be marked "As-Built" with the appropriate Hydro Ottawa Construction Verification Program (CVP) sign-offs completed.
 - All secondary service cables on private sites shall be installed, owned and maintained by the Developer unless otherwise noted by Hydro Ottawa.
 - The Developer shall supply all cable lugs and terminate all Customer-owned cables at the transformer.
 - Primary cable shall be installed in accordance with Hydro Ottawa specification GCS0004 unless otherwise noted.
 - Connection to existing concrete duct banks shall be completed by an approved Hydro Ottawa contractor. All work on existing Hydro Ottawa plant shall be completed in the presence of a Hydro Ottawa inspector and in accordance with the Occupational Health and Safety Act.
 - Civil work shall be installed in accordance with Hydro Ottawa specification GCS0005 unless otherwise noted.
 - Completed ducts shall be rodded by the site contractor in the presence of a Hydro Ottawa inspector and shall be clear of all extraneous material. A mandrel to nominal diameter of the duct and approved by Hydro Ottawa will be passed through each duct. One (1) 3mm polypropylene rope shall be left in each duct.
 - Underground secondary cable terminations and testing shall be in accordance with Hydro Ottawa guideline GCS0001, by others.



4 ELECTRICAL ROOM DUCT ENTRY DETAIL
E-1 1:50



2 DUCTS TRANSFORMER & ENTRY
E-1 1:50

1 POWER & COMMUNICATIONS DUCT SITE PLAN
E-1 1:200

- NOTES:
- BOLLARD AND GROUNDING GRID BY HYDRO OTTAWA
 - REINSTATEMENT BY LANDSCAPE CONTRACTOR



Hobin Architecture Incorporated
43 Pamela Street
Ottawa, Ontario
Canada K1S 3K7
T: 613-238-7200
F: 613-235-2005
E: info@hobinarc.com
hobinarc.com
HOBIN ARCHITECTURE

NO.	REVISIONS	DATE
10.		
9.		
8.		
7.		
6.		
5.		
4.		
3.		
2.	ISSUED FOR BUILDING PERMIT	2017-07-27
1.	ISSUED FOR COORDINATION	2017-07-14

USE OF THESE DRAWINGS IS RESTRICTED SOLELY TO THE CONSTRUCTION FOR WHICH THEY WERE DEVELOPED. BEKOLAY AND ASSOCIATES LTD. ASSUME NO RESPONSIBILITY FOR ANY SUBSEQUENT USE. DO NOT SCALE THE DRAWINGS BUT RESPECT ANY DIMENSIONS SPECIFICALLY IDENTIFIED IN NOTES OR TEXT. ALL CONTRACTORS MUST VISIT THE SITE AND ARE RESPONSIBLE FOR VERIFYING ANY AND ALL DIMENSIONS THAT RELATE TO THEIR WORK. REPORT ANY DISCREPANCIES IMMEDIATELY TO THE CONSULTANT.

BEKOLAY & Associates Ltd.
Consulting Engineers
200 1617 WOODWARD DR., OTTAWA
ON K1S 2G4
TEL: 613-723-0474 FAX: 613-723-0864
email: jbekolay@bko.ca
27-Jul-17

PROJECT: Dovercourt 2017 Phase 2
DRAWING: Service Feed Site Plan

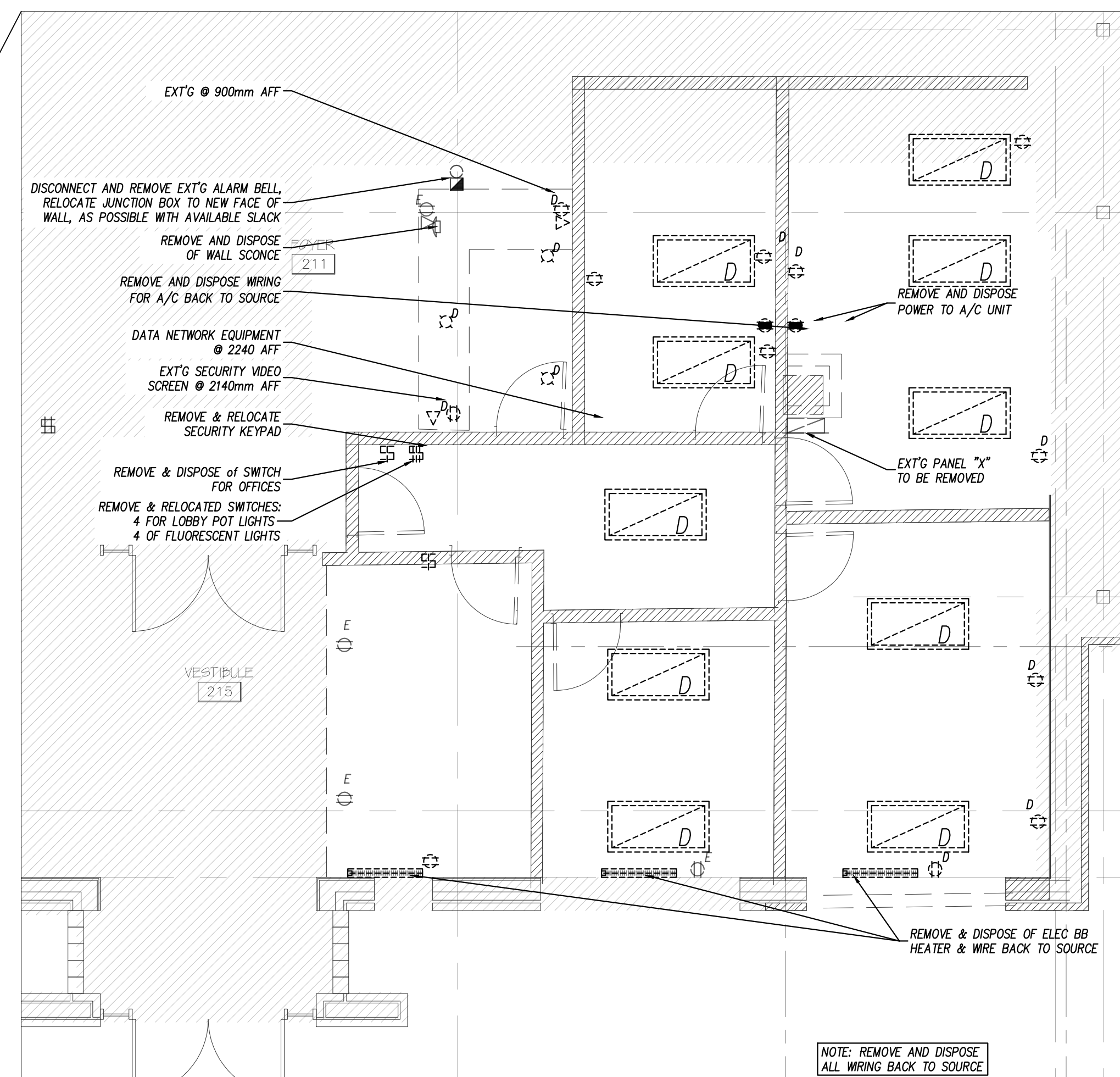
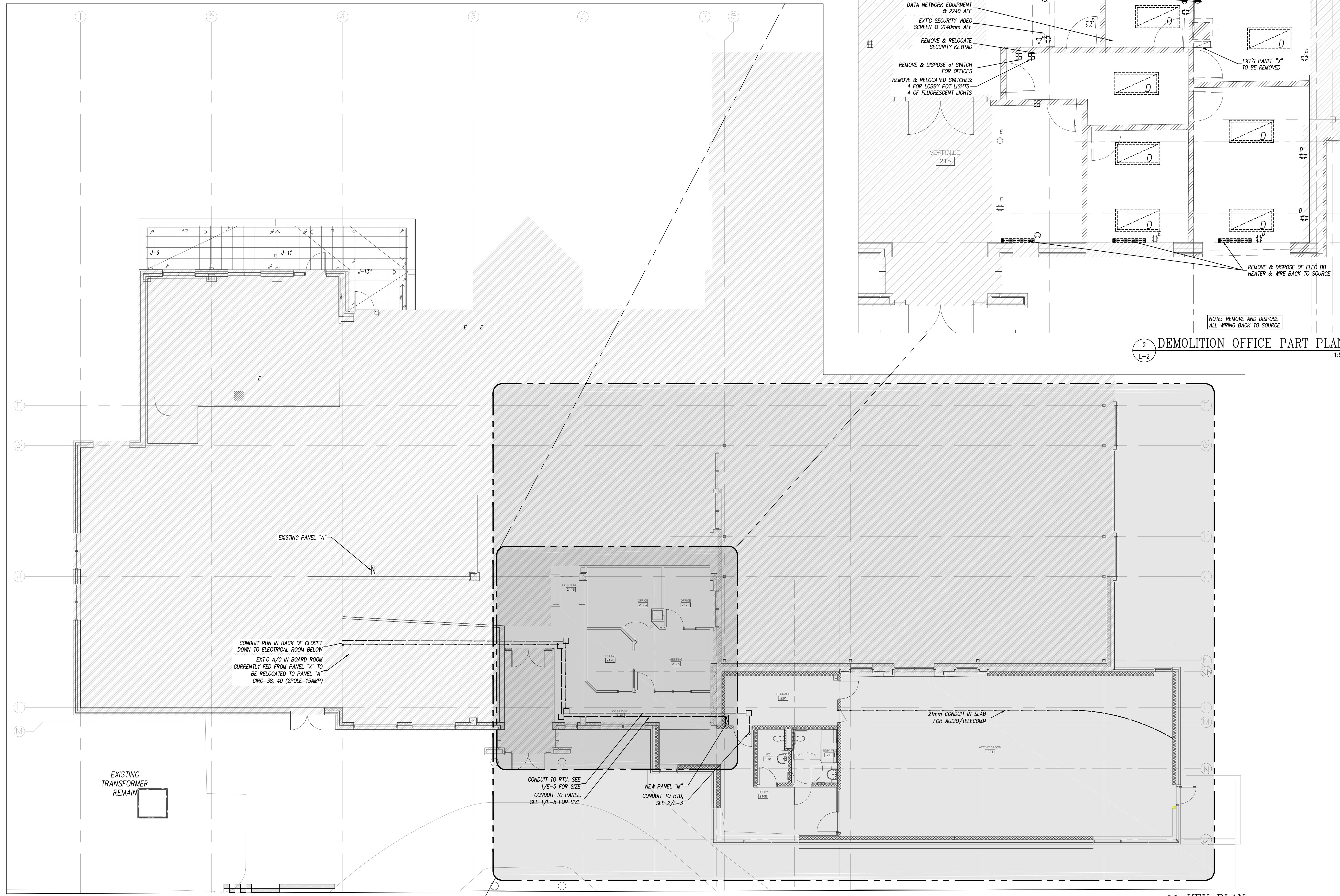
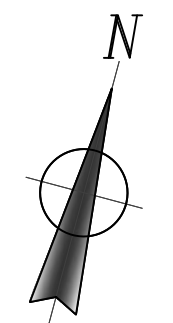
DATE	SCALE
27-Jul-17	AS NOTED
DRAWN BY: MAG	DESIGNED BY: CLW
JOB NO.: 2017-009	CHECKED BY: CLW
DRAWING NO.:	

C. L. WOOD
LICENSED PROFESSIONAL ENGINEER
PROVINCE OF ONTARIO
July 27, 2017



Hobin Architecture
 Incorporated

63 Parnell Street
 Ottawa, Ontario
 Canada K1S 3K7
 T: 613-239-7209
 F: 613-235-5065
 E: info@hobin.com



2 DEMOLITION OFFICE PART PLAN
 E-2 1:50

1 KEY PLAN
 E-2 1:100

10.		
9.		
8.		
7.		
6.		
5.		
4.		
3.		
2.	ISSUED FOR BUILDING PERMIT	2017-07-27
1.	ISSUED FOR COORDINATION	2017-07-14
NO.	REVISIONS	DATE

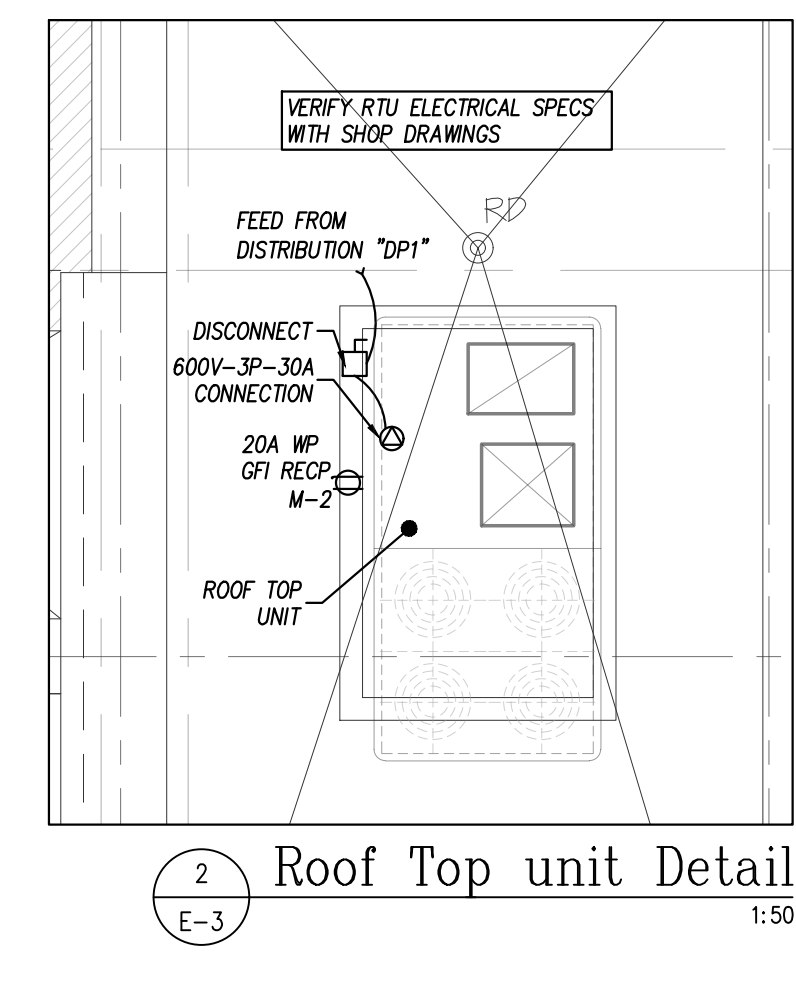
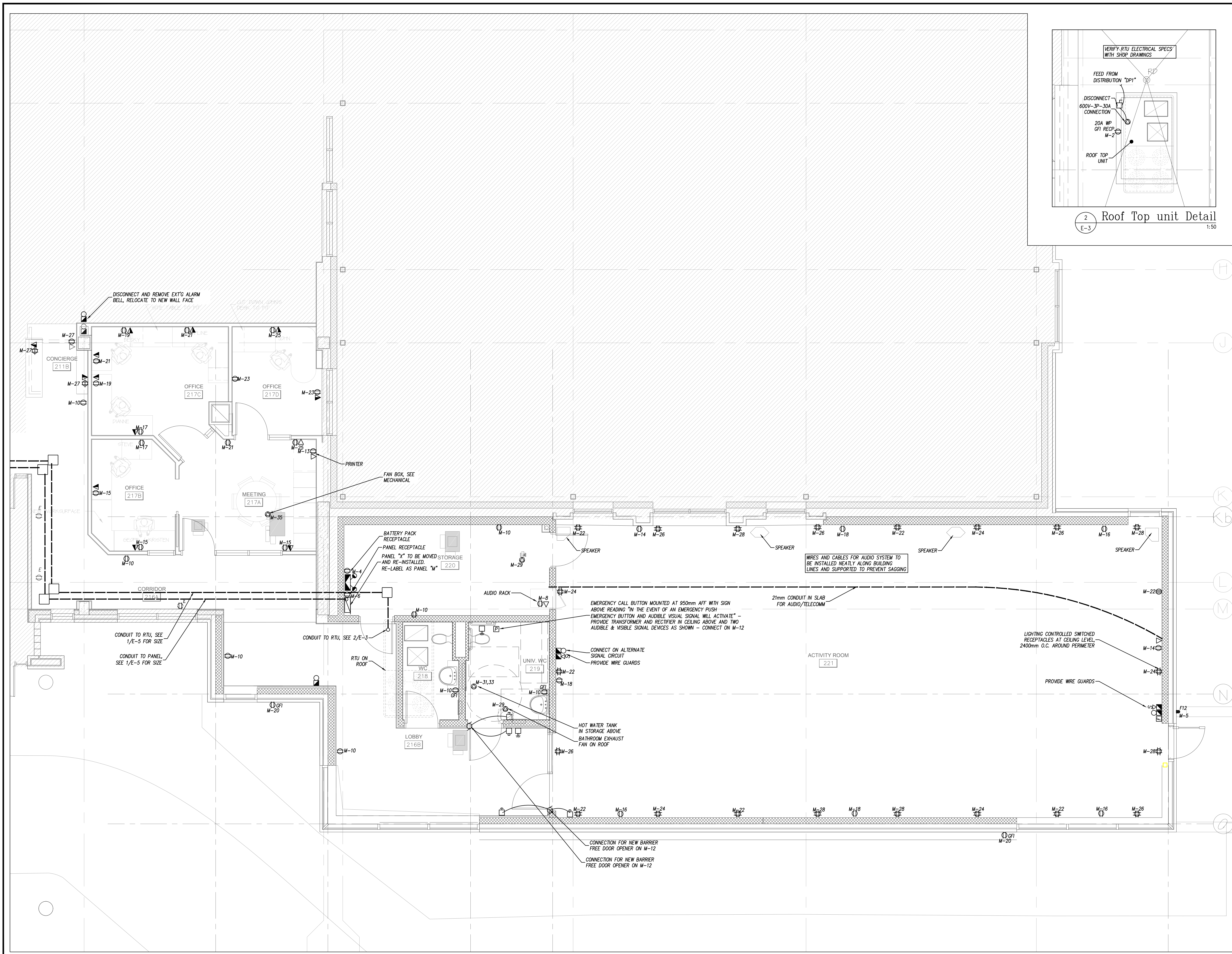
USE OF THESE DRAWINGS IS RESTRICTED SOLELY TO THE CONSTRUCTION FOR WHICH THEY WERE DEVELOPED. BEKOLAY AND ASSOCIATES LTD. ASSUME NO RESPONSIBILITY FOR ANY SUBSEQUENT USE. DO NOT SCALE THE DRAWINGS BUT RESPECT ANY DIMENSIONS SPECIFICALLY IDENTIFIED IN NOTES OR TEXT. ALL CONTRACTORS MUST VISIT THE SITE AND ARE RESPONSIBLE FOR VERIFYING ANY AND ALL DIMENSIONS THAT RELATE TO THEIR WORK. REPORT ANY DISCREPANCIES IMMEDIATELY TO THE CONSULTANT.

BEKOLAY & Associates Ltd.
 Consulting Engineers
 200-1827 MONROE DR., OTTAWA
 PH: 613-723-0474, FAX: 613-723-0884
 email: bekolay@bep.ca

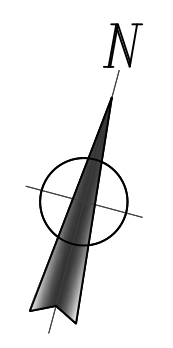
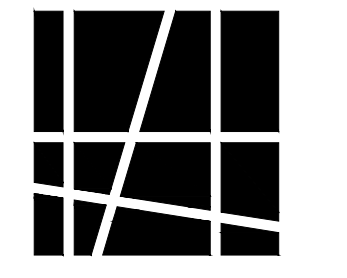
PROJECT: Dovercourt 2017 Phase 2
 DRAWING: CONDUIT (KEY) PLAN DEMOLITION PART PLAN

DATE: 27-Jul-17 SCALE: AS NOTED
 DRAWN BY: MAG DESIGNED BY: CLW
 JOB NO.: 2017-009 CHECKED BY: CLW
 DRAWING NO.:
 E-2 of 5





Hobin Architecture Incorporated
 63 Parnilla Street
 Ottawa, Ontario
 Canada K1S 3K7
 T: 613-238-7200
 F: 613-235-8065
 E: info@hobin.com
 hobin.com



10.		
9.		
8.		
7.		
6.		
5.		
4.		
3.		
2.	ISSUED FOR BUILDING PERMIT	2017-07-27
1.	ISSUED FOR COORDINATION	2017-07-14
NO.	REVISIONS	DATE

USE OF THESE DRAWINGS IS RESTRICTED SOLELY TO THE CONSTRUCTION FOR WHICH THEY WERE DEVELOPED. BEKOLAY AND ASSOCIATES LTD. ASSUME NO RESPONSIBILITY FOR ANY SUBSEQUENT USE. DO NOT SCALE THE DRAWINGS BUT RESPECT ANY DIMENSIONS SPECIFICALLY IDENTIFIED IN NOTES OR TEXT. ALL CONTRACTORS MUST VISIT THE SITE AND ARE RESPONSIBLE FOR VERIFYING ANY AND ALL DIMENSIONS THAT RELATE TO THEIR WORK. REPORT ANY DISCREPANCIES IMMEDIATELY TO THE CONSULTANT.

BEKOLAY & Associates. Ltd.
 Consulting Engineers
 335-1877 MIDLAND DR., OTTAWA
 ON K1M 6P4
 PH 613-723-0474, FAX 613-723-0884
 EMAIL: bekolay@bep.ca
 27-Jul-17

PROJECT: **Dovercourt 2017 Phase 2**
 DRAWING: **Level 2 Power Plan**

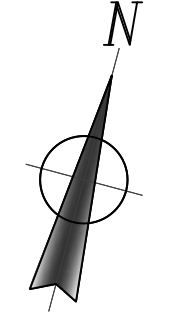
DATE	27-Jul-17	SCALE	1:50
DRAWN BY	MAG	DESIGNED BY	CLW
JOB NO.	2017-009	CHECKED BY	CLW
DRAWING NO.	E-3 of 5		

C. L. WOOD
 LICENSED PROFESSIONAL ENGINEER
 July 27, 2017
 PROVINCE OF ONTARIO

1 Power Addition Part plan 1:50



Hobin Architecture Incorporated
 63 Parnell Street
 Ottawa, Ontario
 Canada K1S 3K7
 T: 613-239-7209
 F: 613-235-8065
 E: info@hobin.com
 hobinarc.com



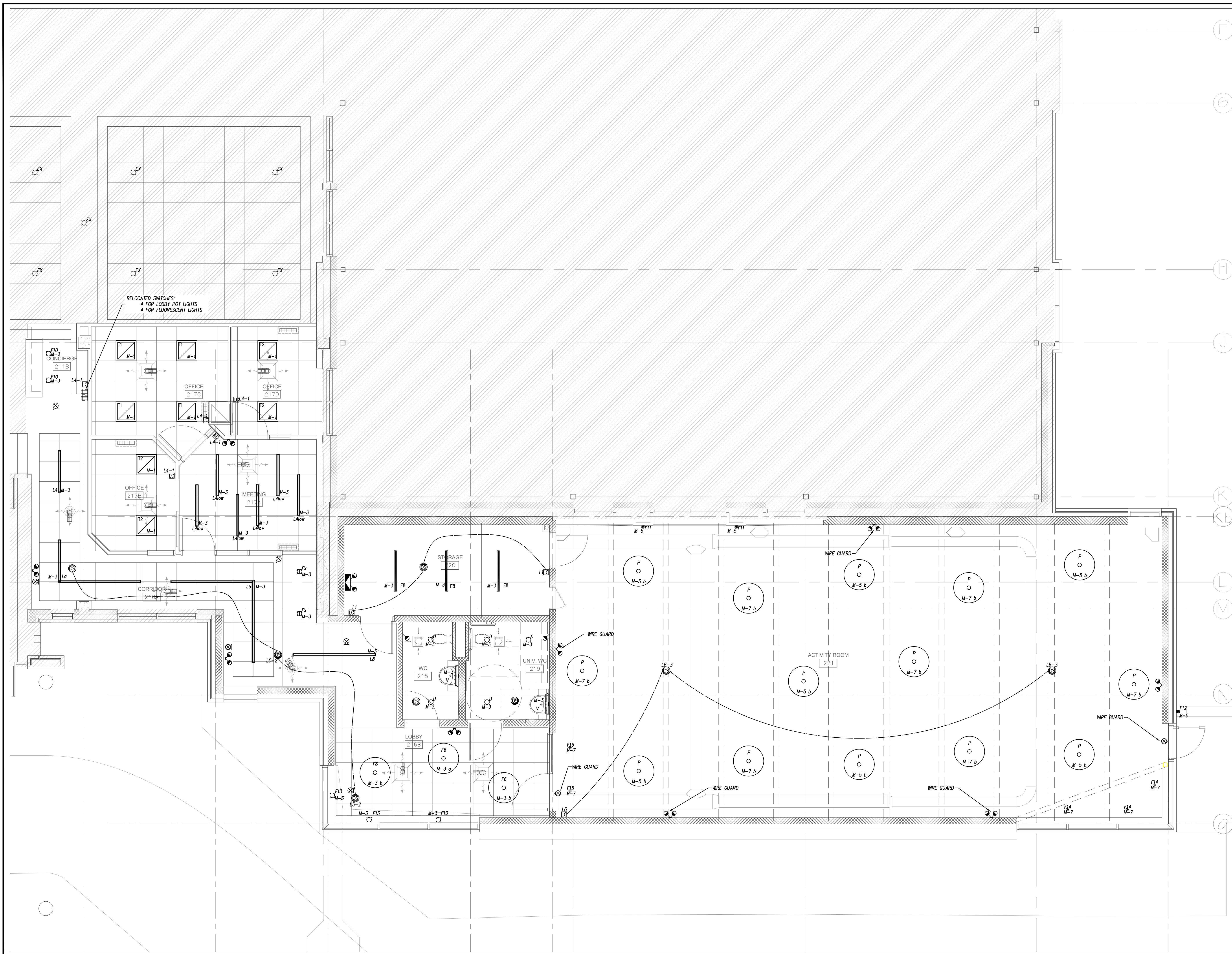
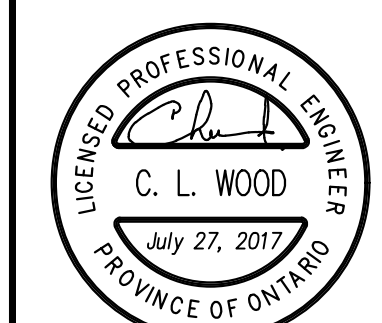
10.		
9.		
8.		
7.		
6.		
5.		
4.		
3.		
2.	ISSUED FOR BUILDING PERMIT	2017-07-27
1.	ISSUED FOR COORDINATION	2017-07-14
NO.	REVISIONS	DATE

USE OF THESE DRAWINGS IS RESTRICTED SOLELY TO THE CONSTRUCTION FOR WHICH THEY WERE DEVELOPED. BEKOLAY AND ASSOCIATES LTD. ASSUME NO RESPONSIBILITY FOR ANY SUBSEQUENT USE. DO NOT SCALE THE DRAWINGS BUT RESPECT ANY DIMENSIONS SPECIFICALLY IDENTIFIED IN NOTES OR TEXT. ALL CONTRACTORS MUST VISIT THE SITE AND ARE RESPONSIBLE FOR VERIFYING ANY AND ALL DIMENSIONS THAT RELATE TO THEIR WORK. REPORT ANY DISCREPANCIES IMMEDIATELY TO THE CONSULTANT.

BEKOLAY & Associates Ltd.
 Consulting Engineers
 200-187 WOODWARD DR., OTTAWA
 ON K1S 3K7
 PH: 613-723-0474, FAX: 613-723-0884
 EMAIL: bekolay@bep.ca

PROJECT: **Dovercourt 2017 Phase 2**
 DRAWING: **Lighting Addition Part Plan**

DATE: 27-Jul-17	SCALE: AS NOTED
DRAWN BY: MAG	DESIGNED BY: CLW
JOB NO.: 2017-009	CHECKED BY: CLW
DRAWING NO.	



1 Lighting Addition Part plan
 E-4 1:50

