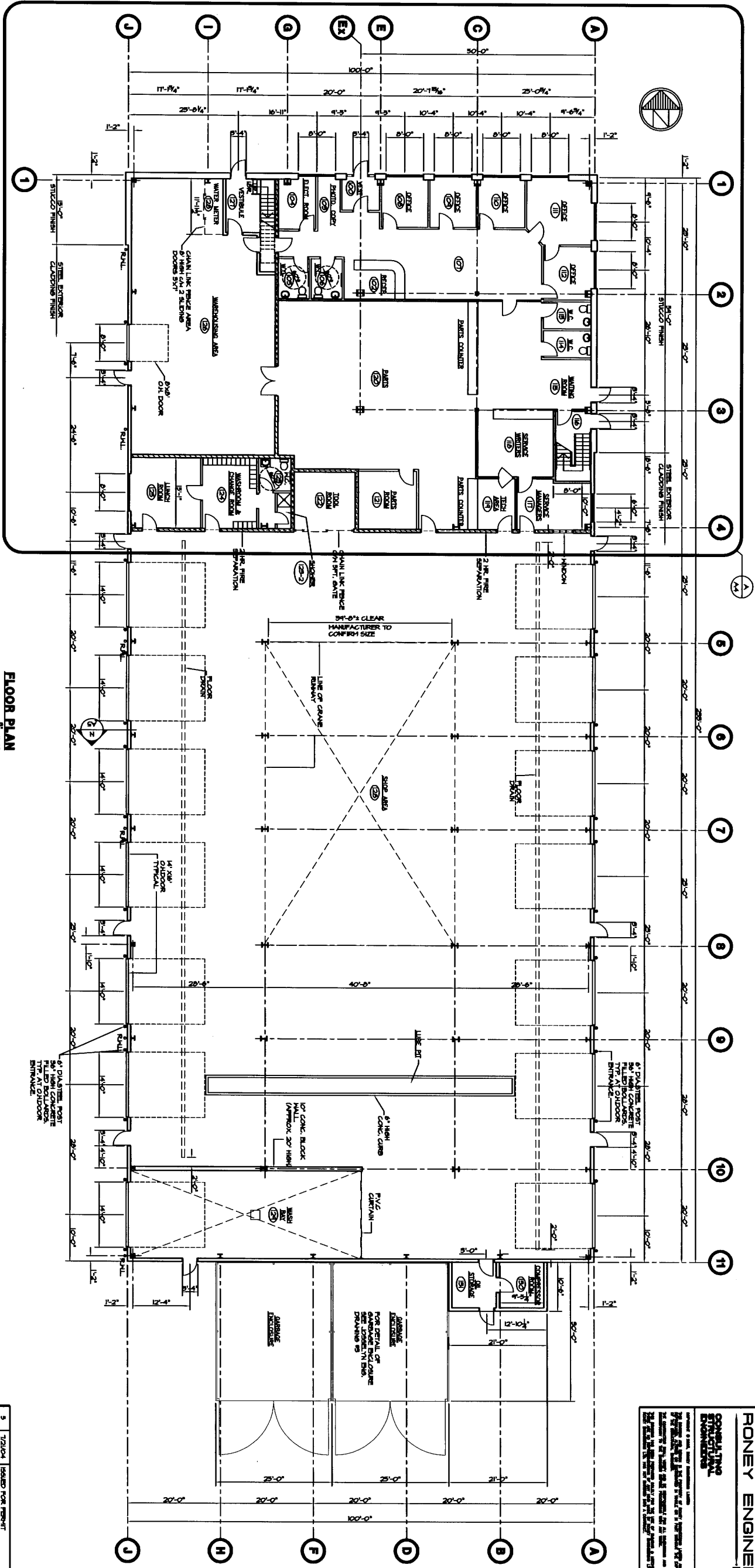
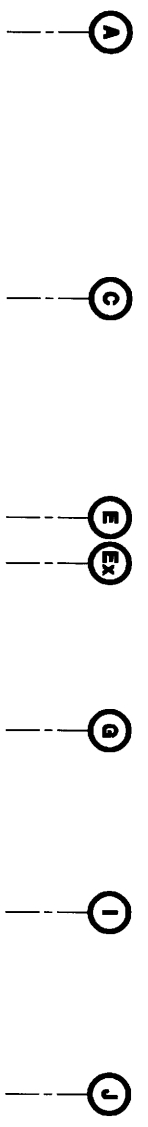


THIS DRAWING IS THE PROPERTY OF RONNEY ENGINEERING LIMITED AND IS NOT TO BE REPRODUCED OR TRANSMITTED IN ANY FORM OR BY ANY MEANS, ELECTRONIC OR MECHANICAL, INCLUDING PHOTOCOPYING, RECORDING, OR BY ANY INFORMATION STORAGE AND RETRIEVAL SYSTEM, WITHOUT THE WRITTEN PERMISSION OF RONNEY ENGINEERING LIMITED.

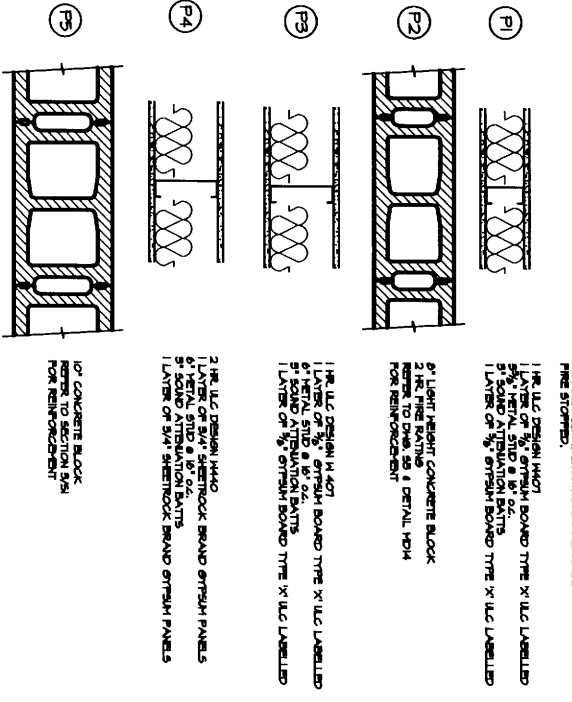


**FLOOR PLAN**  
 1/8" = 1'-0"



**NORTH ELEVATION**  
 1/8" = 1'-0"

**PARTITION TYPE**



NOTE: ALL PARTITION MATERIAL TO BE INSTALLED ABOVE FLOOR SLAB TO TOP OF STRUCTURE ABOVE. ALL PENETRATIONS ARE TO BE FIRE STOPPED.

1. 1/2" U.L.C. DESIGN (H407)  
 2. LAYER OF 5/8" GYPSUM BOARD TYPE 'X' U.L.C. LABELLED  
 3. METAL STUD @ 16" O.C.  
 1. LAYER OF 5/8" GYPSUM BOARD TYPE 'X' U.L.C. LABELLED

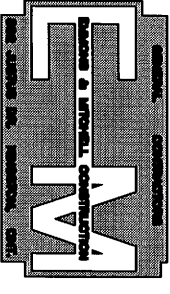
1. 1/2" U.L.C. DESIGN (H407)  
 2. LAYER OF 5/8" GYPSUM BOARD TYPE 'X' U.L.C. LABELLED  
 3. METAL STUD @ 16" O.C.  
 4. 1/2" U.L.C. DESIGN (H407)  
 5. LAYER OF 5/8" GYPSUM BOARD TYPE 'X' U.L.C. LABELLED

1. 1/2" U.L.C. DESIGN (H407)  
 2. LAYER OF 5/8" GYPSUM BOARD TYPE 'X' U.L.C. LABELLED  
 3. METAL STUD @ 16" O.C.  
 4. 1/2" U.L.C. DESIGN (H407)  
 5. LAYER OF 5/8" GYPSUM BOARD TYPE 'X' U.L.C. LABELLED

1. 1/2" U.L.C. DESIGN (H407)  
 2. LAYER OF 5/8" GYPSUM BOARD TYPE 'X' U.L.C. LABELLED  
 3. METAL STUD @ 16" O.C.  
 4. 1/2" U.L.C. DESIGN (H407)  
 5. LAYER OF 5/8" GYPSUM BOARD TYPE 'X' U.L.C. LABELLED

1. 1/2" U.L.C. DESIGN (H407)  
 2. LAYER OF 5/8" GYPSUM BOARD TYPE 'X' U.L.C. LABELLED  
 3. METAL STUD @ 16" O.C.  
 4. 1/2" U.L.C. DESIGN (H407)  
 5. LAYER OF 5/8" GYPSUM BOARD TYPE 'X' U.L.C. LABELLED

3	1/2" U.L.C.	DESIGN FOR PERMIT	***
4	5/8" U.L.C.	DESIGN FOR PERMIT	***
5	1/2" U.L.C.	DESIGN FOR PERMIT	***
1	1/2" U.L.C.	DESIGN FOR PERMIT	***
2	1/2" U.L.C.	DESIGN FOR PERMIT	***

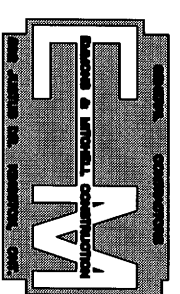


**NEW STRUCTURE FOR INTERNATIONAL TRUCKS**  
 DALTON, AVE.  
 KINGSTON, ONTARIO

**FLOOR PLAN & ELEVATION**  
 DAMONS & MITCHELL  
 CONSTRUCTION  
 AS SHOWN

THIS DRAWING IS THE PROPERTY OF RONEY ENGINEERING LIMITED. IT IS TO BE USED ONLY FOR THE PROJECT AND SITE SPECIFICALLY IDENTIFIED HEREON. IT IS NOT TO BE REPRODUCED, COPIED, EITHER WHOLLY OR IN PART, OR TRANSMITTED IN ANY FORM OR BY ANY MEANS, WITHOUT THE WRITTEN PERMISSION OF RONEY ENGINEERING LIMITED.

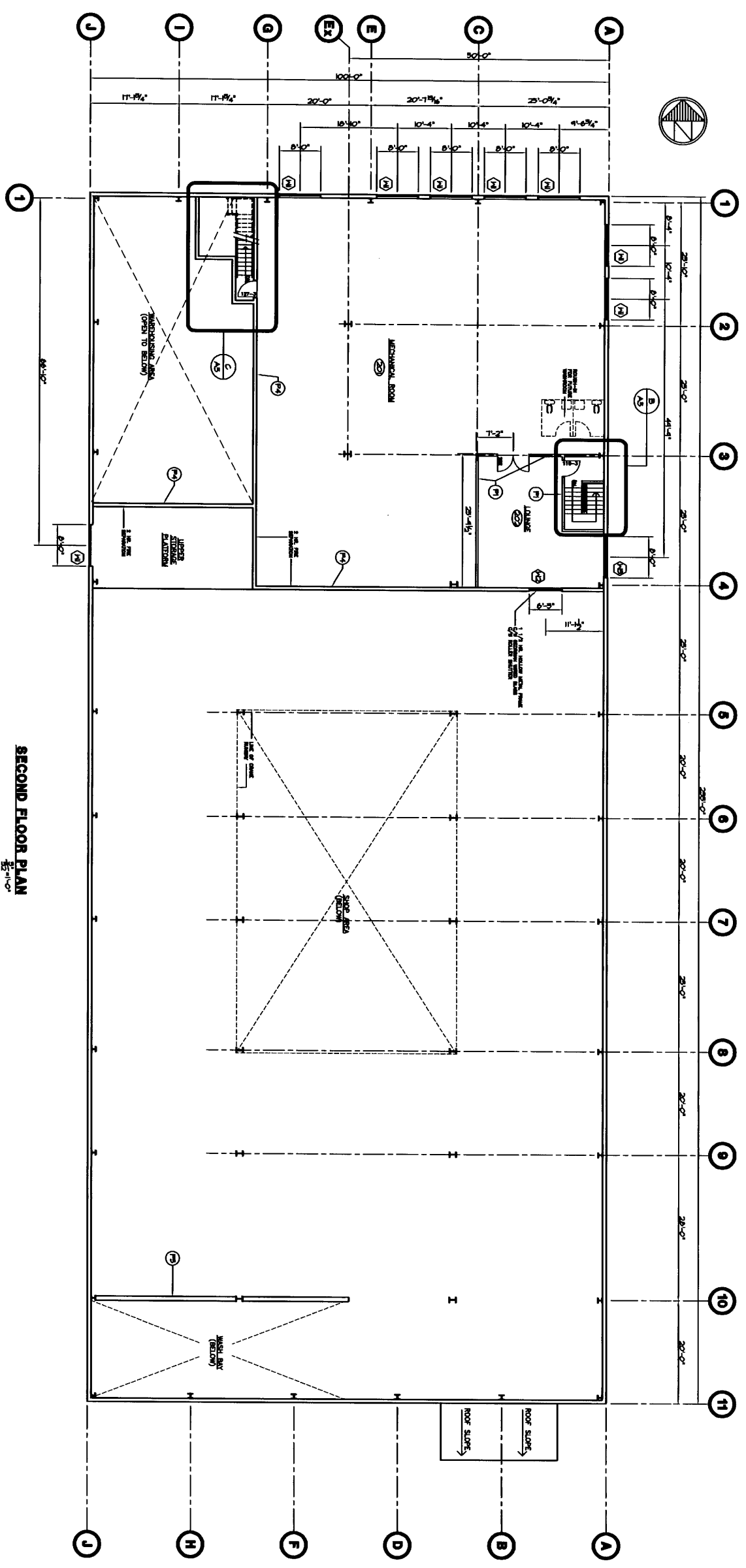
3	7/21/04	ISSUED FOR PERMIT	HHH
4	8/17/04	ISSUED FOR BIDDING	HHH
5	4/6/04	ISSUED FOR CLIENT REVIEW	HHH
2	2/20/04	ISSUED FOR PERICING	HHH
1	1/16/04	ISSUED FOR CLIENT REVIEW	HHH
NO.	DATE	REVISION	BY



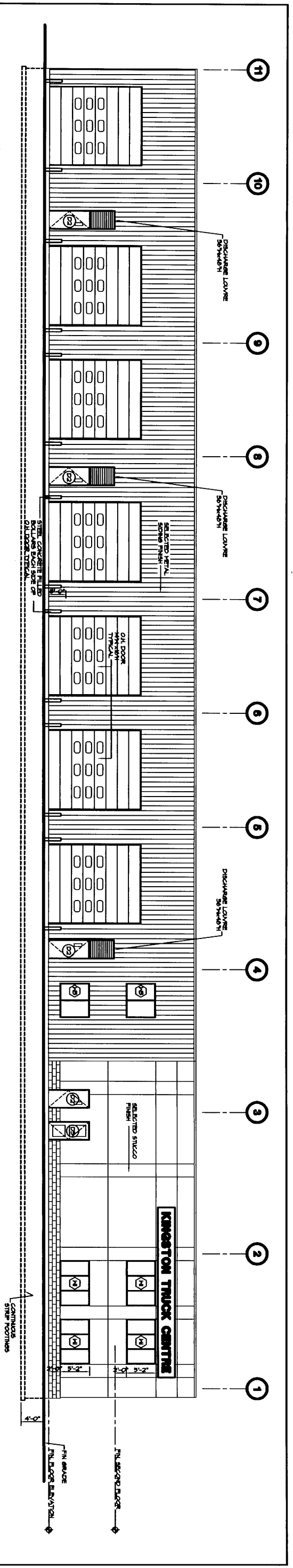
**NEW STRUCTURE FOR  
INTERNATIONAL TRUCKS**  
DALTON, AVE.  
KINGSTON, ONTARIO

**SECOND FLOOR PLAN**  
RONEY & MITCHELL  
CONSTRUCTION

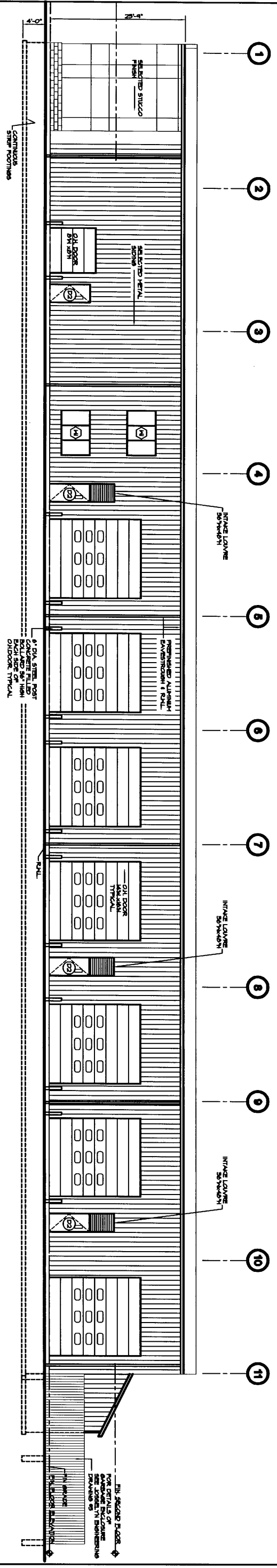
DATE: AS SHOWN  
**A2**



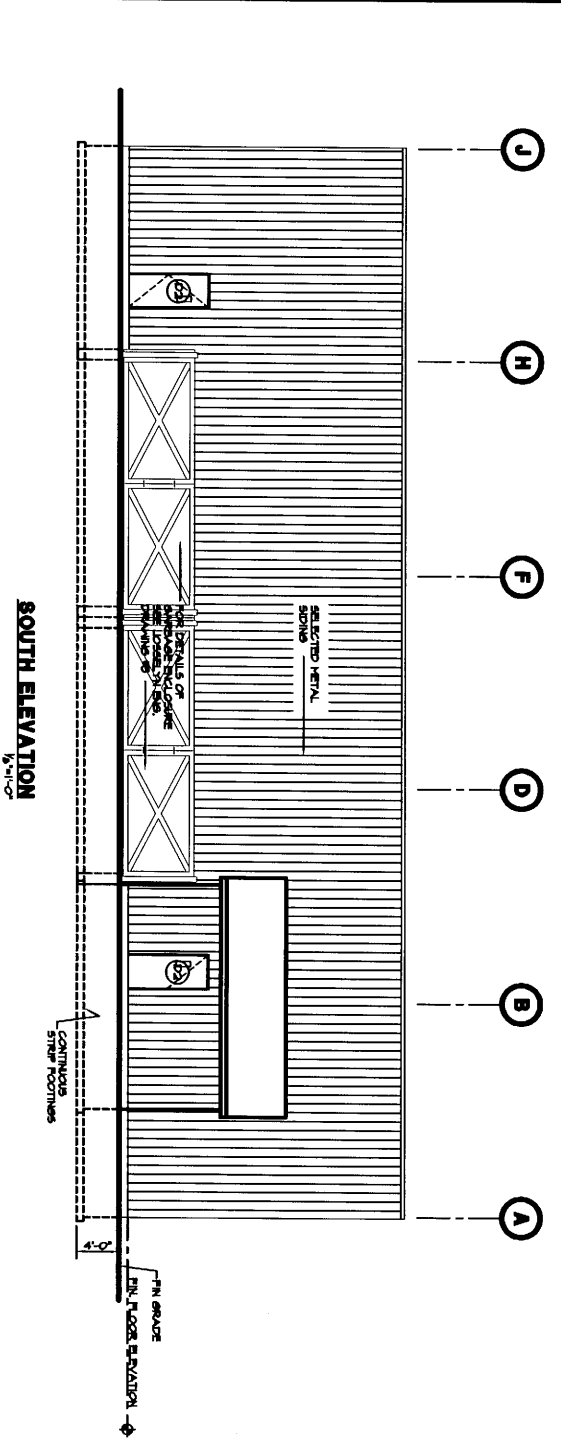
**SECOND FLOOR PLAN**  
1/5'-0"



**EAST ELEVATION**  
1/8"=1'-0"

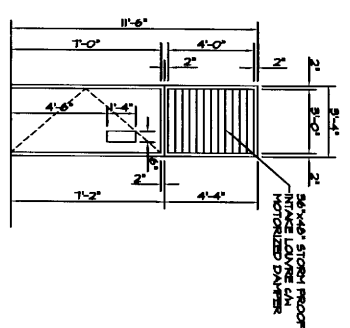


**WEST ELEVATION**  
1/8"=1'-0"

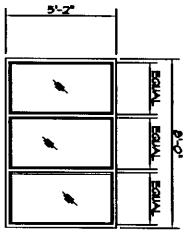


**SOUTH ELEVATION**  
1/8"=1'-0"

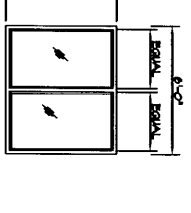
**ELEVATION OF TYPICAL MAN DOOR WITH DISCHARGE/INTAKE LOUVER**



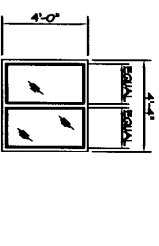
**WINDOW TYPE 1**  
ALUMINUM WINDOW



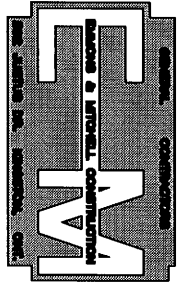
**WINDOW TYPE 3**  
ALUMINUM WINDOW



**WINDOW TYPE 2**  
HOLLOW METAL FRAME



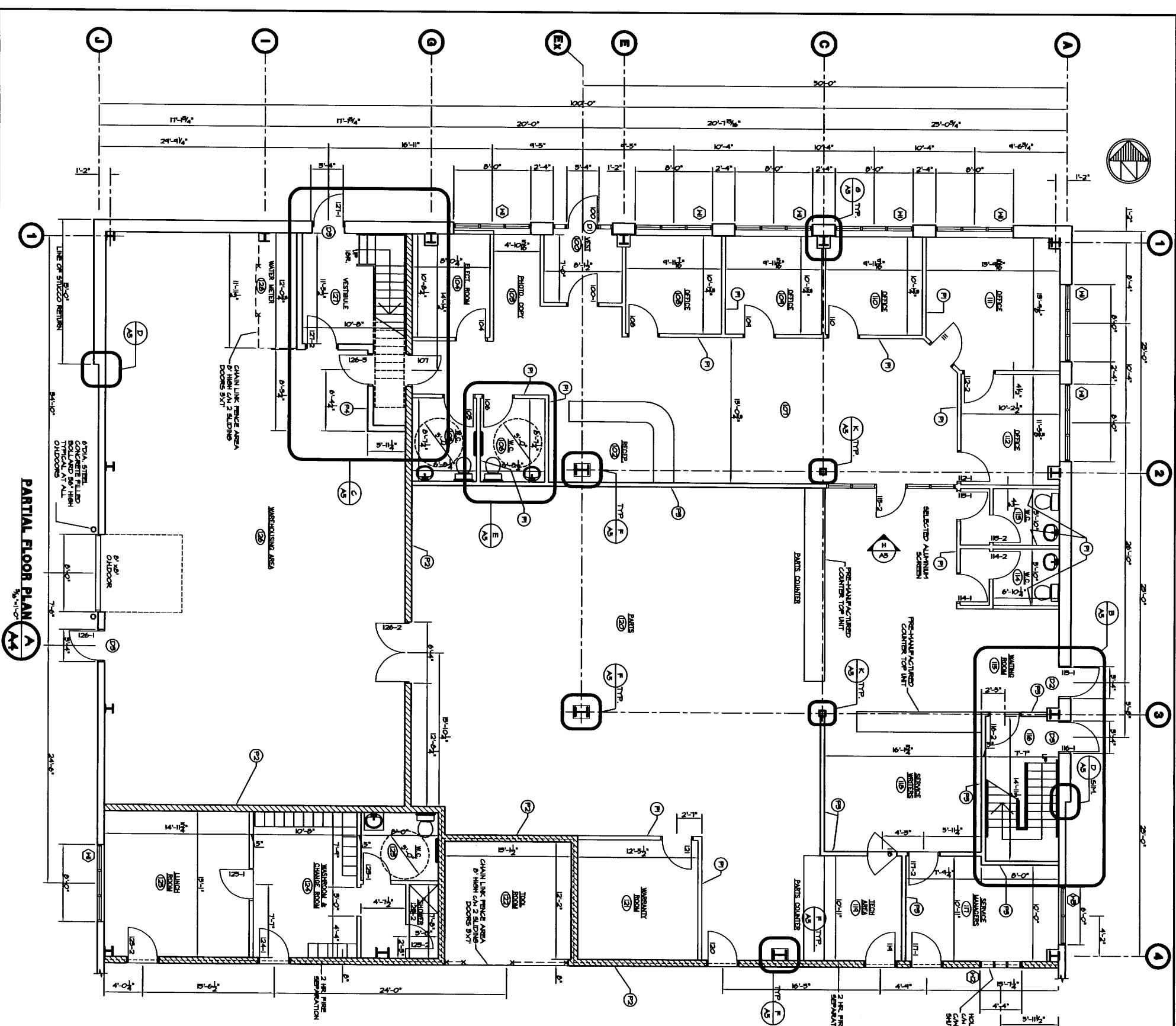
5	72104	ROLLED FORM REINFT	HHH
4	67104	ROLLED FORM REINFT	HHH
3	48104	ROLLED FORM REINFT	HHH
2	27204	ROLLED FORM REINFT	HHH
1	16104	ROLLED FORM REINFT	HHH
0			HH



**NEW STRUCTURE FOR INTERNATIONAL TRUCKS**  
DALTON, AVE.  
KINGSTON, ONTARIO

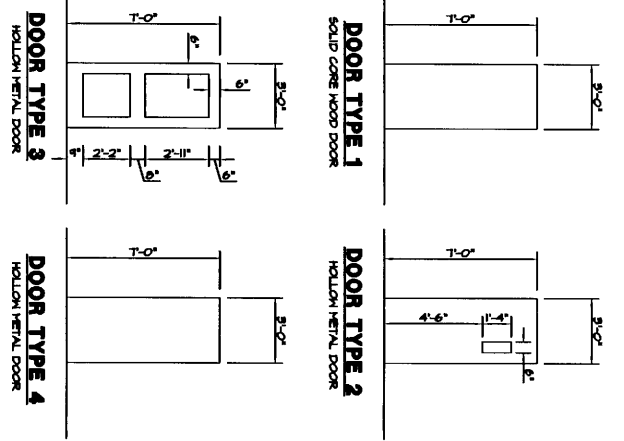
**DAMORS & MITCHELL CONSTRUCTION**  
1000 ST. HUBERT  
KINGSTON, ONTARIO  
K7A 1A1  
416-338-2111  
416-338-2111

**A3**



PARTIAL FLOOR PLAN

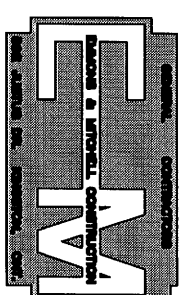
DOOR SCHEDULE



DOOR	FRAME	FINISH	TYPE	SIZE	HMT.	FINISH	GLAZING	REMARKS
100	ALUM.	PT.	D2	36x44	ALUM.	PT.	TEMP.	
101	ALUM.	PT.	D2	36x44	ALUM.	PT.	TEMP.	
102	ALUM.	PT.	D2	36x44	ALUM.	PT.	TEMP.	
103	ALUM.	PT.	D2	36x44	ALUM.	PT.	TEMP.	
104	ALUM.	PT.	D2	36x44	ALUM.	PT.	TEMP.	
105	ALUM.	PT.	D2	36x44	ALUM.	PT.	TEMP.	
106	ALUM.	PT.	D2	36x44	ALUM.	PT.	TEMP.	
107	ALUM.	PT.	D2	36x44	ALUM.	PT.	TEMP.	
108	ALUM.	PT.	D2	36x44	ALUM.	PT.	TEMP.	
109	ALUM.	PT.	D2	36x44	ALUM.	PT.	TEMP.	
110	ALUM.	PT.	D2	36x44	ALUM.	PT.	TEMP.	
111	ALUM.	PT.	D2	36x44	ALUM.	PT.	TEMP.	
112	ALUM.	PT.	D2	36x44	ALUM.	PT.	TEMP.	
113	ALUM.	PT.	D2	36x44	ALUM.	PT.	TEMP.	
114	ALUM.	PT.	D2	36x44	ALUM.	PT.	TEMP.	
115	ALUM.	PT.	D2	36x44	ALUM.	PT.	TEMP.	
116	ALUM.	PT.	D2	36x44	ALUM.	PT.	TEMP.	
117	ALUM.	PT.	D2	36x44	ALUM.	PT.	TEMP.	
118	ALUM.	PT.	D2	36x44	ALUM.	PT.	TEMP.	
119	ALUM.	PT.	D2	36x44	ALUM.	PT.	TEMP.	
120	ALUM.	PT.	D2	36x44	ALUM.	PT.	TEMP.	
121	ALUM.	PT.	D2	36x44	ALUM.	PT.	TEMP.	
122	ALUM.	PT.	D2	36x44	ALUM.	PT.	TEMP.	
123	ALUM.	PT.	D2	36x44	ALUM.	PT.	TEMP.	
124	ALUM.	PT.	D2	36x44	ALUM.	PT.	TEMP.	
125	ALUM.	PT.	D2	36x44	ALUM.	PT.	TEMP.	
126	ALUM.	PT.	D2	36x44	ALUM.	PT.	TEMP.	
127	ALUM.	PT.	D2	36x44	ALUM.	PT.	TEMP.	
128	ALUM.	PT.	D2	36x44	ALUM.	PT.	TEMP.	
129	ALUM.	PT.	D2	36x44	ALUM.	PT.	TEMP.	
130	ALUM.	PT.	D2	36x44	ALUM.	PT.	TEMP.	
131	ALUM.	PT.	D2	36x44	ALUM.	PT.	TEMP.	
132	ALUM.	PT.	D2	36x44	ALUM.	PT.	TEMP.	
133	ALUM.	PT.	D2	36x44	ALUM.	PT.	TEMP.	
134	ALUM.	PT.	D2	36x44	ALUM.	PT.	TEMP.	
135	ALUM.	PT.	D2	36x44	ALUM.	PT.	TEMP.	
136	ALUM.	PT.	D2	36x44	ALUM.	PT.	TEMP.	
137	ALUM.	PT.	D2	36x44	ALUM.	PT.	TEMP.	
138	ALUM.	PT.	D2	36x44	ALUM.	PT.	TEMP.	
139	ALUM.	PT.	D2	36x44	ALUM.	PT.	TEMP.	
140	ALUM.	PT.	D2	36x44	ALUM.	PT.	TEMP.	
141	ALUM.	PT.	D2	36x44	ALUM.	PT.	TEMP.	
142	ALUM.	PT.	D2	36x44	ALUM.	PT.	TEMP.	
143	ALUM.	PT.	D2	36x44	ALUM.	PT.	TEMP.	
144	ALUM.	PT.	D2	36x44	ALUM.	PT.	TEMP.	
145	ALUM.	PT.	D2	36x44	ALUM.	PT.	TEMP.	
146	ALUM.	PT.	D2	36x44	ALUM.	PT.	TEMP.	
147	ALUM.	PT.	D2	36x44	ALUM.	PT.	TEMP.	
148	ALUM.	PT.	D2	36x44	ALUM.	PT.	TEMP.	
149	ALUM.	PT.	D2	36x44	ALUM.	PT.	TEMP.	
150	ALUM.	PT.	D2	36x44	ALUM.	PT.	TEMP.	
151	ALUM.	PT.	D2	36x44	ALUM.	PT.	TEMP.	
152	ALUM.	PT.	D2	36x44	ALUM.	PT.	TEMP.	
153	ALUM.	PT.	D2	36x44	ALUM.	PT.	TEMP.	
154	ALUM.	PT.	D2	36x44	ALUM.	PT.	TEMP.	
155	ALUM.	PT.	D2	36x44	ALUM.	PT.	TEMP.	
156	ALUM.	PT.	D2	36x44	ALUM.	PT.	TEMP.	
157	ALUM.	PT.	D2	36x44	ALUM.	PT.	TEMP.	
158	ALUM.	PT.	D2	36x44	ALUM.	PT.	TEMP.	
159	ALUM.	PT.	D2	36x44	ALUM.	PT.	TEMP.	
160	ALUM.	PT.	D2	36x44	ALUM.	PT.	TEMP.	
161	ALUM.	PT.	D2	36x44	ALUM.	PT.	TEMP.	
162	ALUM.	PT.	D2	36x44	ALUM.	PT.	TEMP.	
163	ALUM.	PT.	D2	36x44	ALUM.	PT.	TEMP.	
164	ALUM.	PT.	D2	36x44	ALUM.	PT.	TEMP.	
165	ALUM.	PT.	D2	36x44	ALUM.	PT.	TEMP.	
166	ALUM.	PT.	D2	36x44	ALUM.	PT.	TEMP.	
167	ALUM.	PT.	D2	36x44	ALUM.	PT.	TEMP.	
168	ALUM.	PT.	D2	36x44	ALUM.	PT.	TEMP.	
169	ALUM.	PT.	D2	36x44	ALUM.	PT.	TEMP.	
170	ALUM.	PT.	D2	36x44	ALUM.	PT.	TEMP.	
171	ALUM.	PT.	D2	36x44	ALUM.	PT.	TEMP.	
172	ALUM.	PT.	D2	36x44	ALUM.	PT.	TEMP.	
173	ALUM.	PT.	D2	36x44	ALUM.	PT.	TEMP.	
174	ALUM.	PT.	D2	36x44	ALUM.	PT.	TEMP.	
175	ALUM.	PT.	D2	36x44	ALUM.	PT.	TEMP.	
176	ALUM.	PT.	D2	36x44	ALUM.	PT.	TEMP.	
177	ALUM.	PT.	D2	36x44	ALUM.	PT.	TEMP.	
178	ALUM.	PT.	D2	36x44	ALUM.	PT.	TEMP.	
179	ALUM.	PT.	D2	36x44	ALUM.	PT.	TEMP.	
180	ALUM.	PT.	D2	36x44	ALUM.	PT.	TEMP.	
181	ALUM.	PT.	D2	36x44	ALUM.	PT.	TEMP.	
182	ALUM.	PT.	D2	36x44	ALUM.	PT.	TEMP.	
183	ALUM.	PT.	D2	36x44	ALUM.	PT.	TEMP.	
184	ALUM.	PT.	D2	36x44	ALUM.	PT.	TEMP.	
185	ALUM.	PT.	D2	36x44	ALUM.	PT.	TEMP.	
186	ALUM.	PT.	D2	36x44	ALUM.	PT.	TEMP.	
187	ALUM.	PT.	D2	36x44	ALUM.	PT.	TEMP.	
188	ALUM.	PT.	D2	36x44	ALUM.	PT.	TEMP.	
189	ALUM.	PT.	D2	36x44	ALUM.	PT.	TEMP.	
190	ALUM.	PT.	D2	36x44	ALUM.	PT.	TEMP.	
191	ALUM.	PT.	D2	36x44	ALUM.	PT.	TEMP.	
192	ALUM.	PT.	D2	36x44	ALUM.	PT.	TEMP.	
193	ALUM.	PT.	D2	36x44	ALUM.	PT.	TEMP.	
194	ALUM.	PT.	D2	36x44	ALUM.	PT.	TEMP.	
195	ALUM.	PT.	D2	36x44	ALUM.	PT.	TEMP.	
196	ALUM.	PT.	D2	36x44	ALUM.	PT.	TEMP.	
197	ALUM.	PT.	D2	36x44	ALUM.	PT.	TEMP.	
198	ALUM.	PT.	D2	36x44	ALUM.	PT.	TEMP.	
199	ALUM.	PT.	D2	36x44	ALUM.	PT.	TEMP.	
200	ALUM.	PT.	D2	36x44	ALUM.	PT.	TEMP.	
201	ALUM.	PT.	D2	36x44	ALUM.	PT.	TEMP.	
202	ALUM.	PT.	D2	36x44	ALUM.	PT.	TEMP.	

**RONEY ENGINEERING LIMITED**  
 CONSULTING STRUCTURAL ENGINEERS  
 KINGSTON ONTARIO  
 8-45-3082

1	17A104	RAISED FOR FINISH	1/4"
2	17A104	RAISED FOR FINISH	1/4"
3	17A104	RAISED FOR FINISH	1/4"
4	17A104	RAISED FOR FINISH	1/4"
5	17A104	RAISED FOR FINISH	1/4"

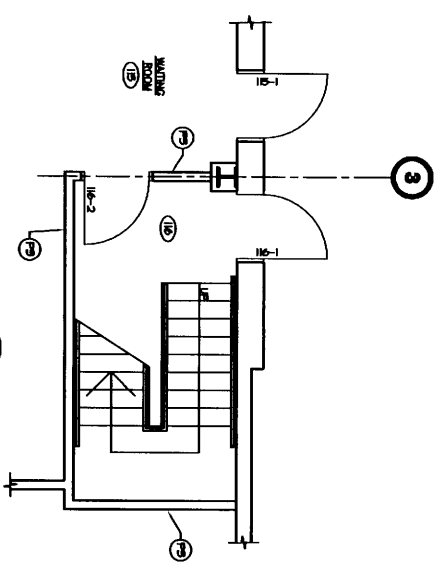


**NEW STRUCTURE FOR INTERNATIONAL TRUCKS**  
 DALTON, AVE.  
 KINGSTON, ONTARIO  
 LAYOUT PLAN

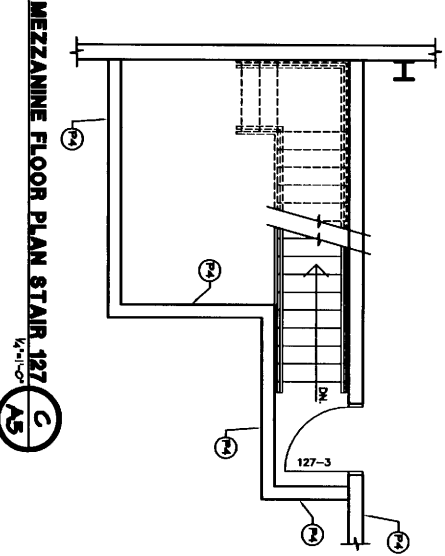
**DAMONS & MITCHELL CONSTRUCTION**  
 1000...  
 KINGSTON, ONTARIO  
 548-1111

**A4**

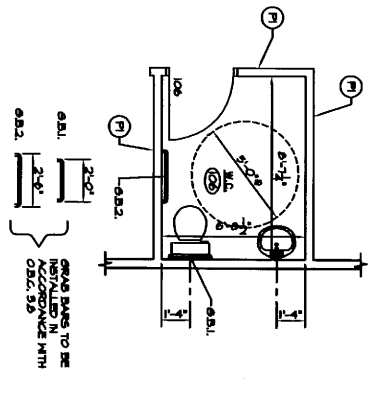
THIS DRAWING IS THE PROPERTY OF RONNEY ENGINEERING LIMITED. IT IS TO BE USED ONLY FOR THE PROJECT AND SITE SPECIFICALLY IDENTIFIED HEREON. IT IS NOT TO BE REPRODUCED, COPIED, EITHER WHOLLY OR IN PART, OR TRANSMITTED IN ANY FORM OR BY ANY MEANS, ELECTRONIC OR MECHANICAL, INCLUDING PHOTOCOPYING, RECORDING, OR BY ANY INFORMATION STORAGE AND RETRIEVAL SYSTEM, WITHOUT THE WRITTEN PERMISSION OF RONNEY ENGINEERING LIMITED.



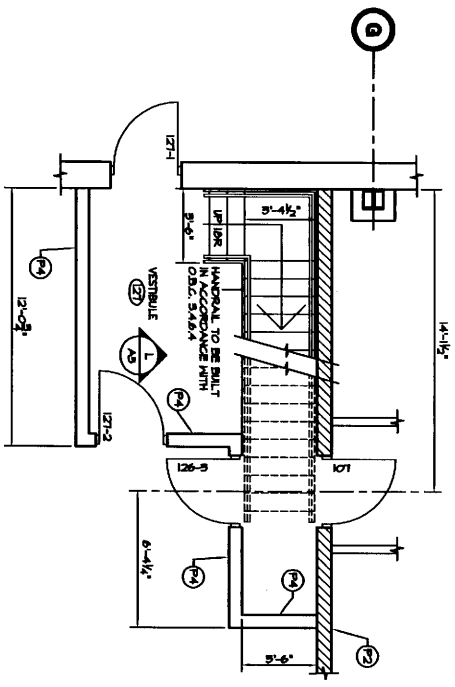
**PLAN STAIR 116 B AS**



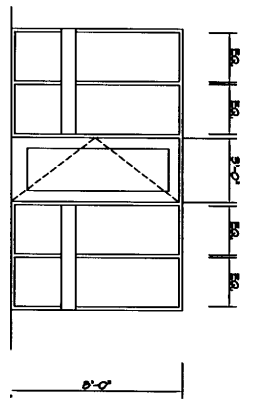
**MEZZANINE FLOOR PLAN STAIR 127 C AS**



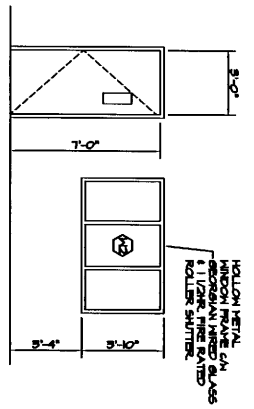
**PLAN DETAIL E AS**



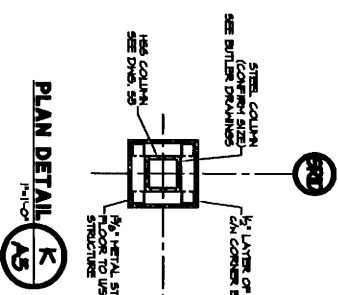
**GROUND FLOOR PLAN STAIR 127 C AS**



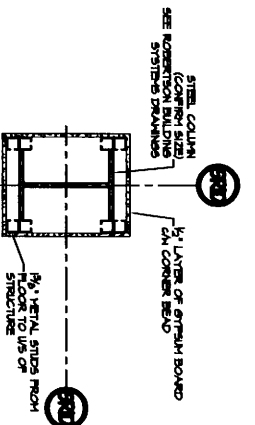
**ELEVATION H AS**



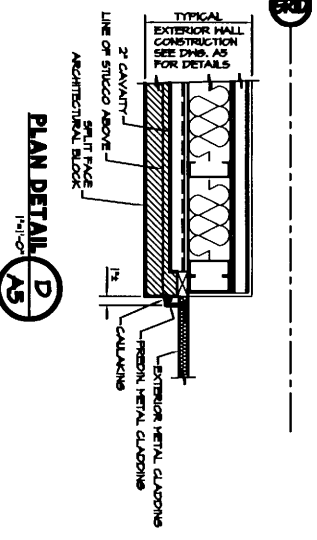
**ELEVATION J AS**



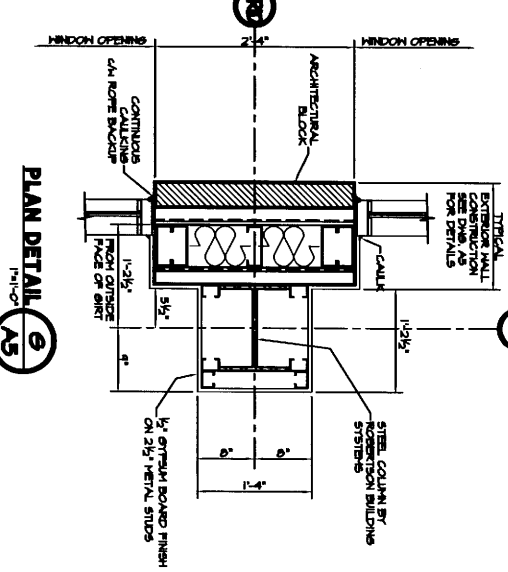
**PLAN DETAIL K AS**



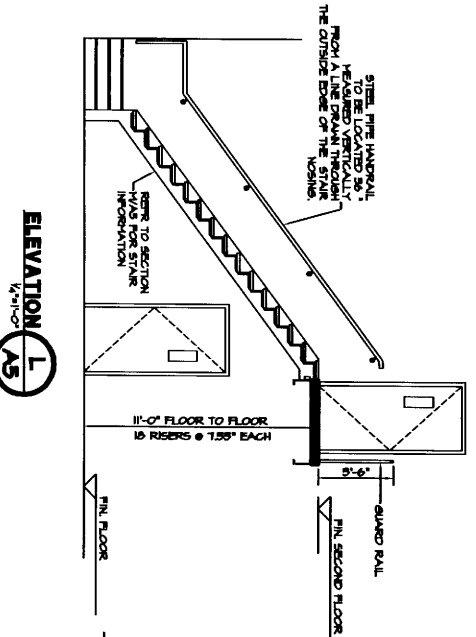
**PLAN DETAIL F AS**



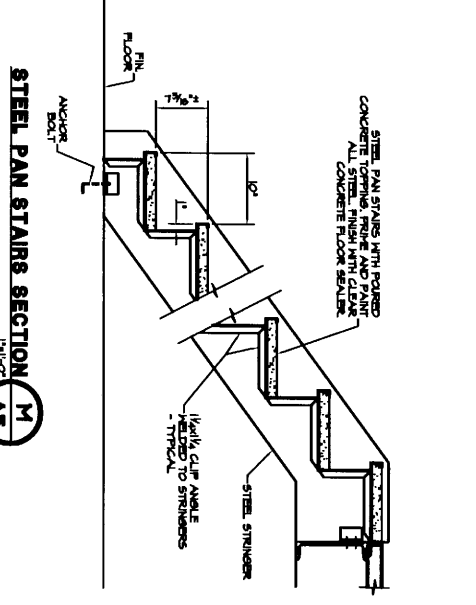
**PLAN DETAIL D AS**



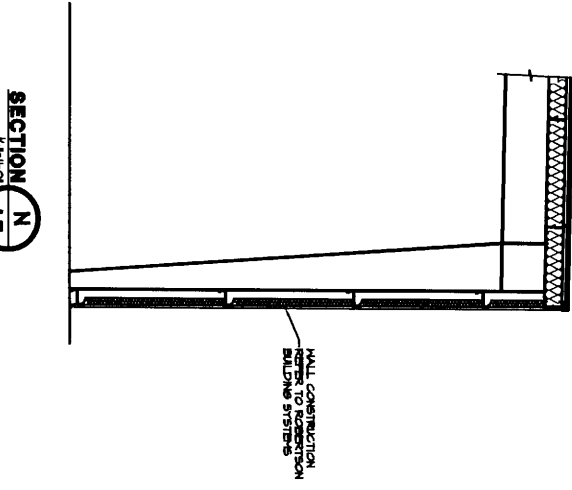
**PLAN DETAIL G AS**



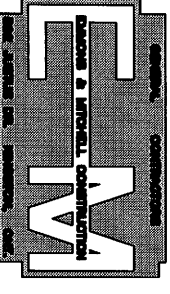
**ELEVATION L AS**



**STEEL PAN STAIRS SECTION M AS**



**SECTION N AS**



**NEW STRUCTURE FOR INTERNATIONAL TRUCKS DALTON, AVE. HENNINGTON, ONTARIO**

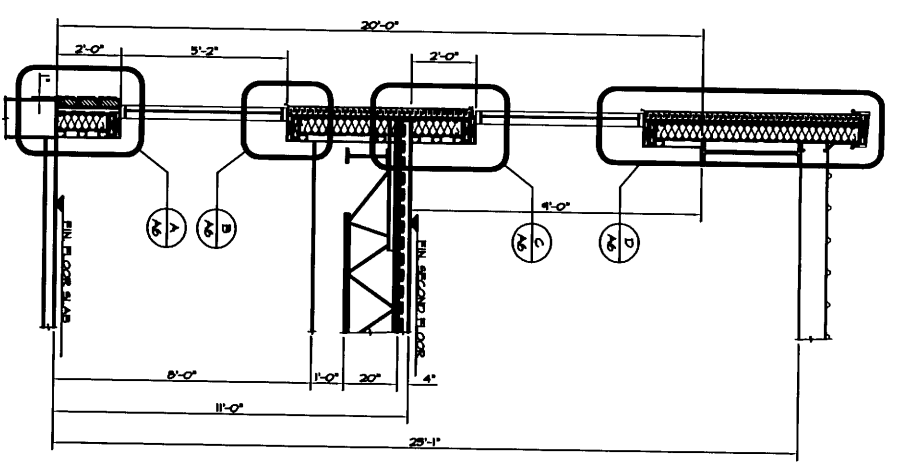
**SECTIONS & DETAILS**

**DALONG & MITCHELL CONSTRUCTION**

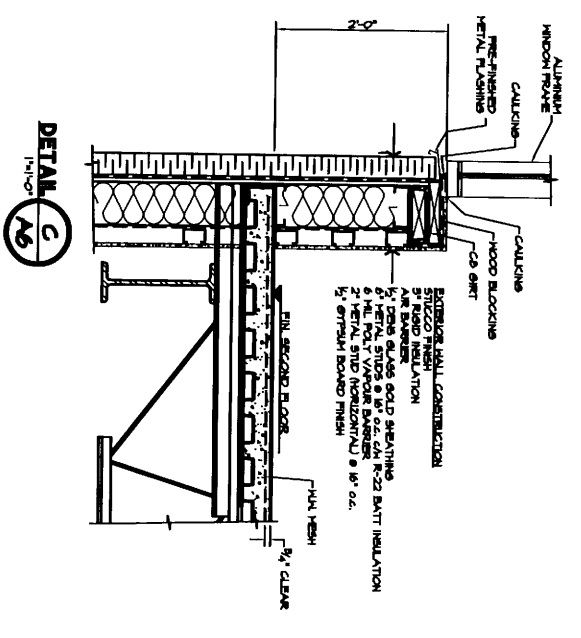
3	T23104	ISSUED FOR PERMIT	MMH
5	8/7/04	ISSUED FOR BIDDING	MMH
2	4/8/04	ISSUED FOR CLIENT REVIEW	MMH
1	8/6/04	ISSUED FOR CLIENT REVIEW	MMH
NA	NA	NA	NA

**AS**

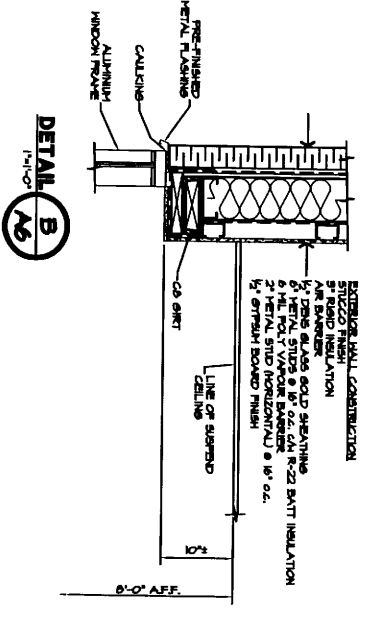
**CONSULTING STRUCTURAL ENGINEERS**  
 1000 EASTERN AVE. TORONTO, ONTARIO M4M 1B7  
 416-593-5082  
 1000 EASTERN AVE. TORONTO, ONTARIO M4M 1B7  
 416-593-5082



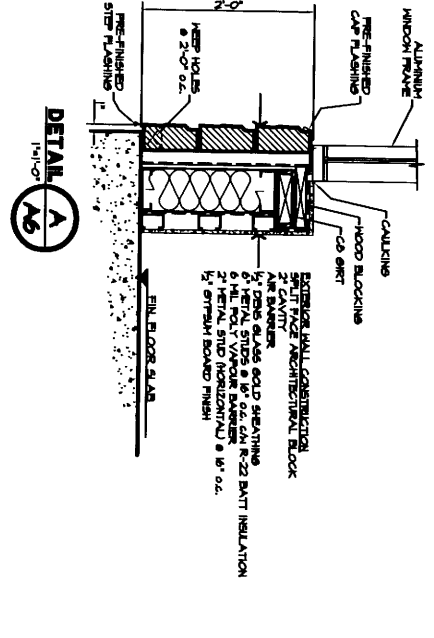
**SECTION 1**  
 3/8" = 1'-0"



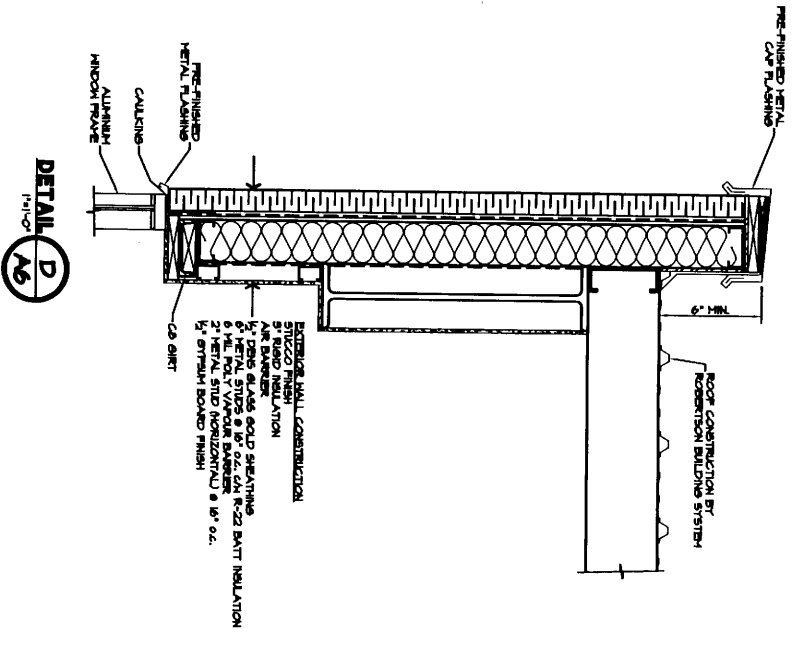
**DETAIL C**  
 1/4" = 1'-0"



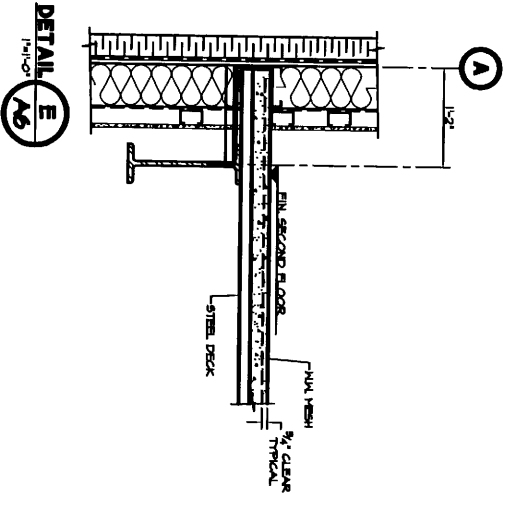
**DETAIL B**  
 1/4" = 1'-0"



**DETAIL A**  
 1/4" = 1'-0"

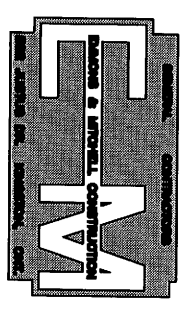


**DETAIL D**  
 1/4" = 1'-0"



**DETAIL E**  
 1/4" = 1'-0"

NO.	DATE	REVISION
5	7/20/04	ISSUED FOR PERMIT
3	6/7/04	ISSUED FOR BIDDING
2	4/8/04	ISSUED FOR CLIENT REVIEW
1	1/16/04	ISSUED FOR CLIENT REVIEW
NO.	DATE	REVISION



**NEW STRUCTURE FOR INTERNATIONAL TRUCKS**  
 DALTON, AVE.  
 KINGSTON, ONTARIO

**SECTIONS & DETAILS**

**DAVIDSON & MITCHELL CONSTRUCTION**

**A6**

