

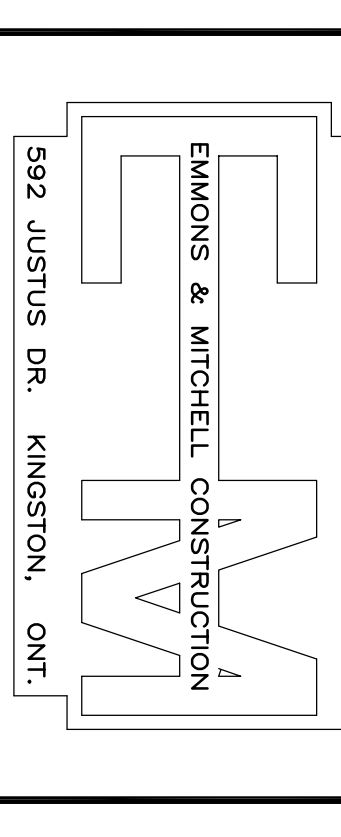
COPYRIGHT

This drawing and design is the property of Atria Engineering and shall not be reproduced, stored in a retrieval system, or transmitted in any form or by any means, electronic, mechanical, photocopying, recording, or by any information storage and retrieval system, without the express written consent of Atria Engineering. Do NOT SCALE DRAWINGS. Design may have been adapted or reduced from original. Check against paper for any discrepancies. Discrepancies to Consultant before proceeding with work. IF IN DOUBT, ASK...

RONNEY ENGINEERING LIMITED
CONSULTING
KINGSTON
ONTARIO
ENGINEERS
542-5092

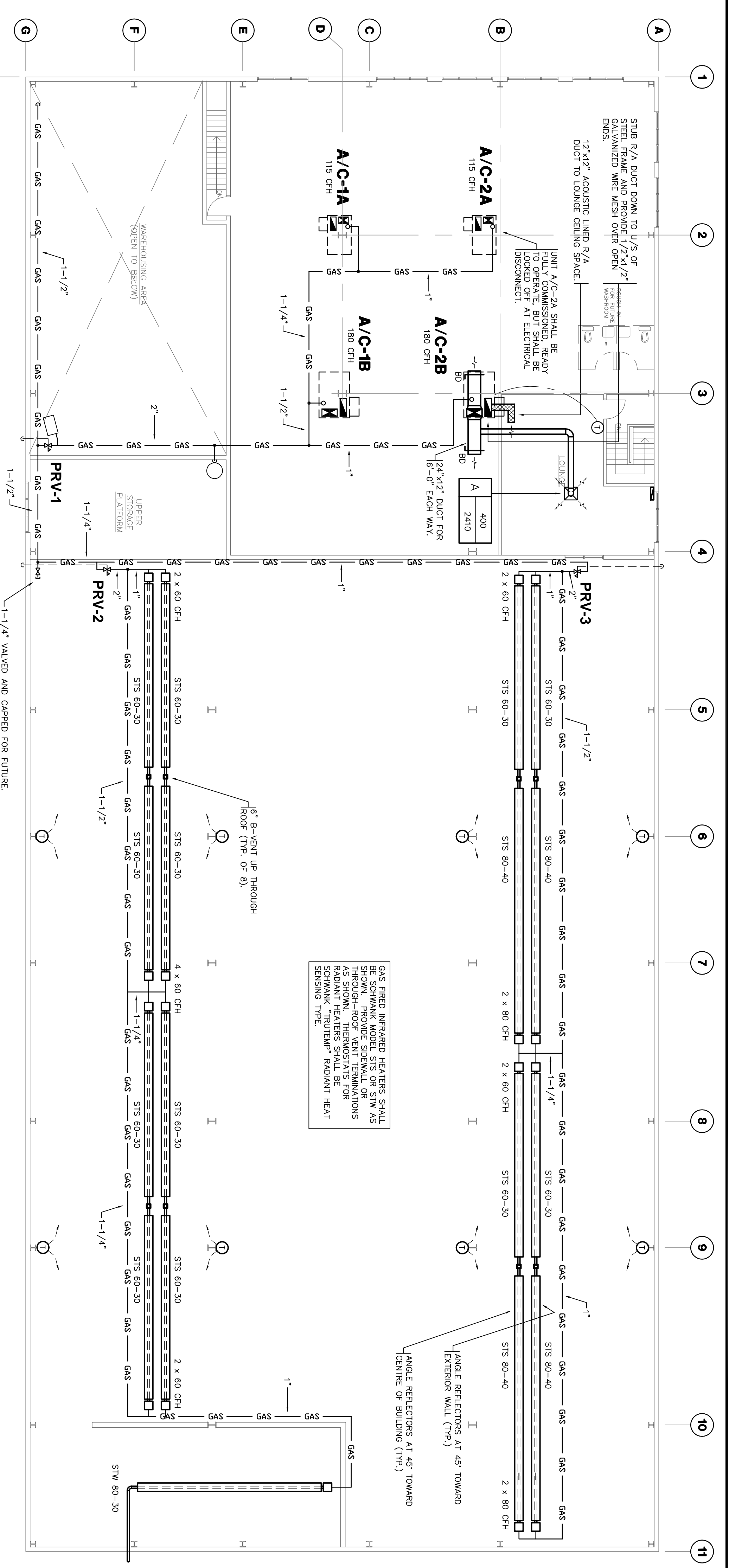
OWNER: 592 JUSTUS DR. KINGSTON, ONT.

GENERAL CONTRACTORS
EMMONS & MITCHELL CONSTRUCTION



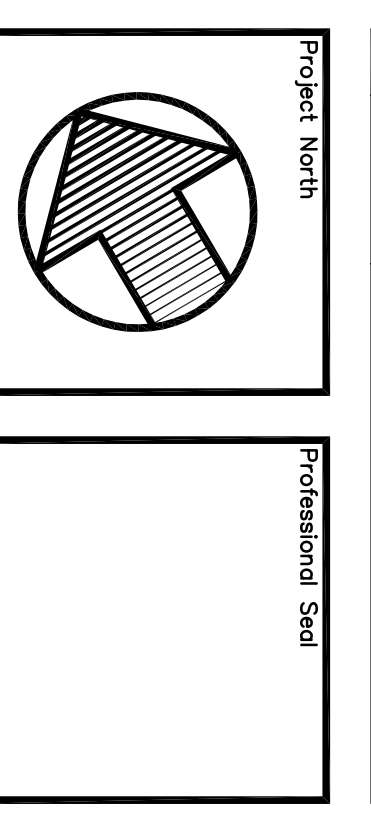
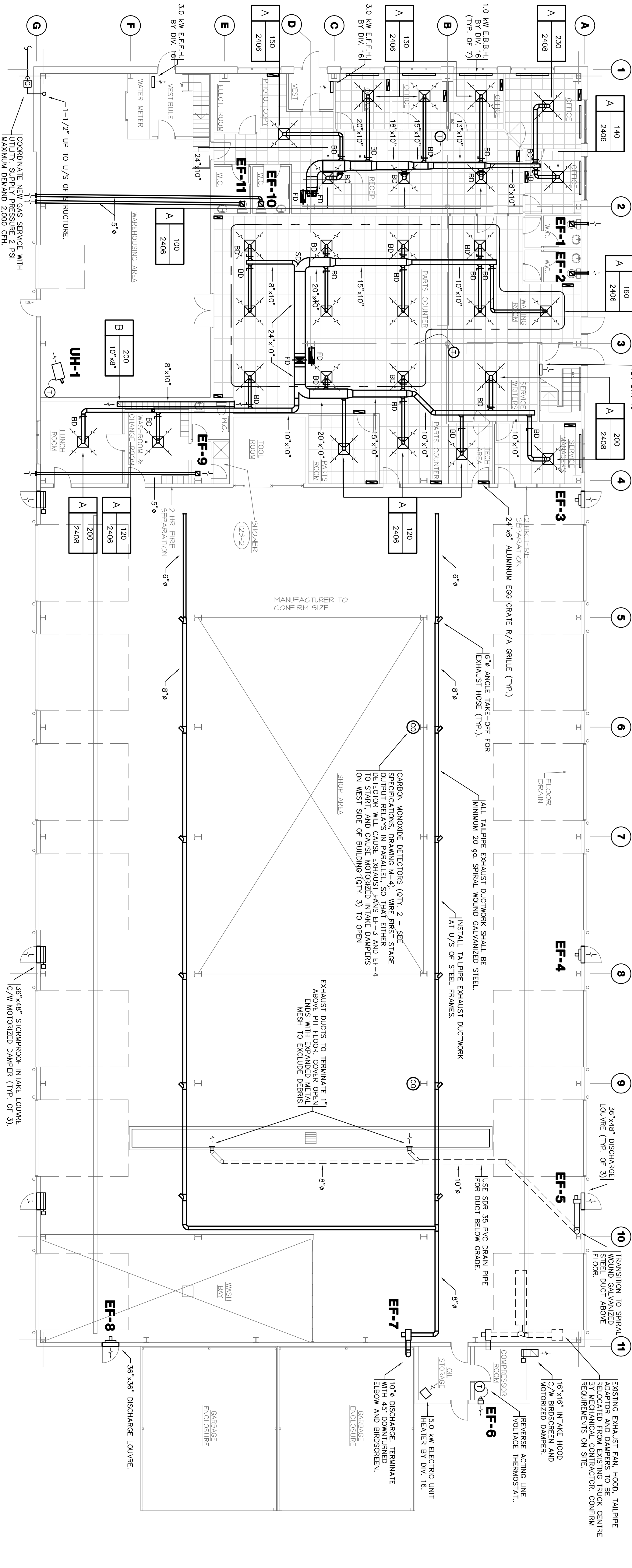
MEZZANINE PLAN

SCALE: 3/32"=1'-0"



FLOOR PLAN

SCALE: 3/32"=1'-0"



Atria ENGINEERING
A Division of Trizec Group Limited
700 Dalton Avenue
Kingston, Ontario
K7M 6R8
Tel: 613-348-7440
Fax: 613-346-6633
www.atria-eng.com

Project: INTERNATIONAL TRUCKS
DALTON, AVENUE
KINGSTON
ONTARIO

Drawing: HVAC

Scale: AS SHOWN
Designed By: D.J.
Drawn By: M.R.
Project No.: 0406
Revision No.: 2

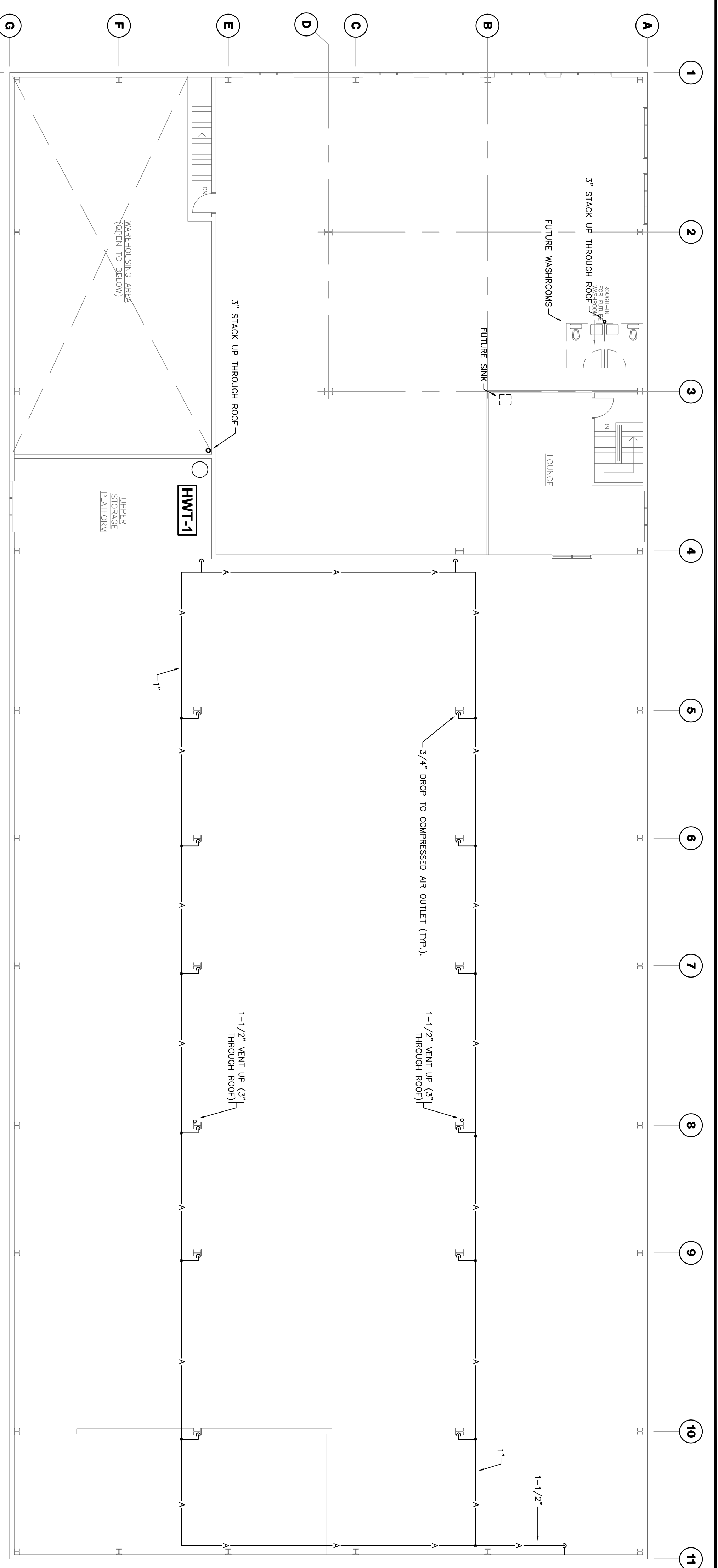
Drawing No: M-1
Revision Date: 07 JUNE 04
Revision No.: 2

COPYRIGHT
 This drawing and design is the property of Atira Engineering and shall not be reproduced, stored in a retrieval system, or transmitted in any form or by any means, electronic, mechanical, photocopying, recording, or by any information storage and retrieval system, without the express written consent of Atira Engineering.
DO NOT SCALE DRAWINGS
 Drawings may have been enlarged or reduced from original. Check against original drawings for accuracy. Do not rely on dimensions or details shown on drawings if they do not agree with the original drawings. Discrepancies to Consultant before proceeding with work. If in doubt, ask...

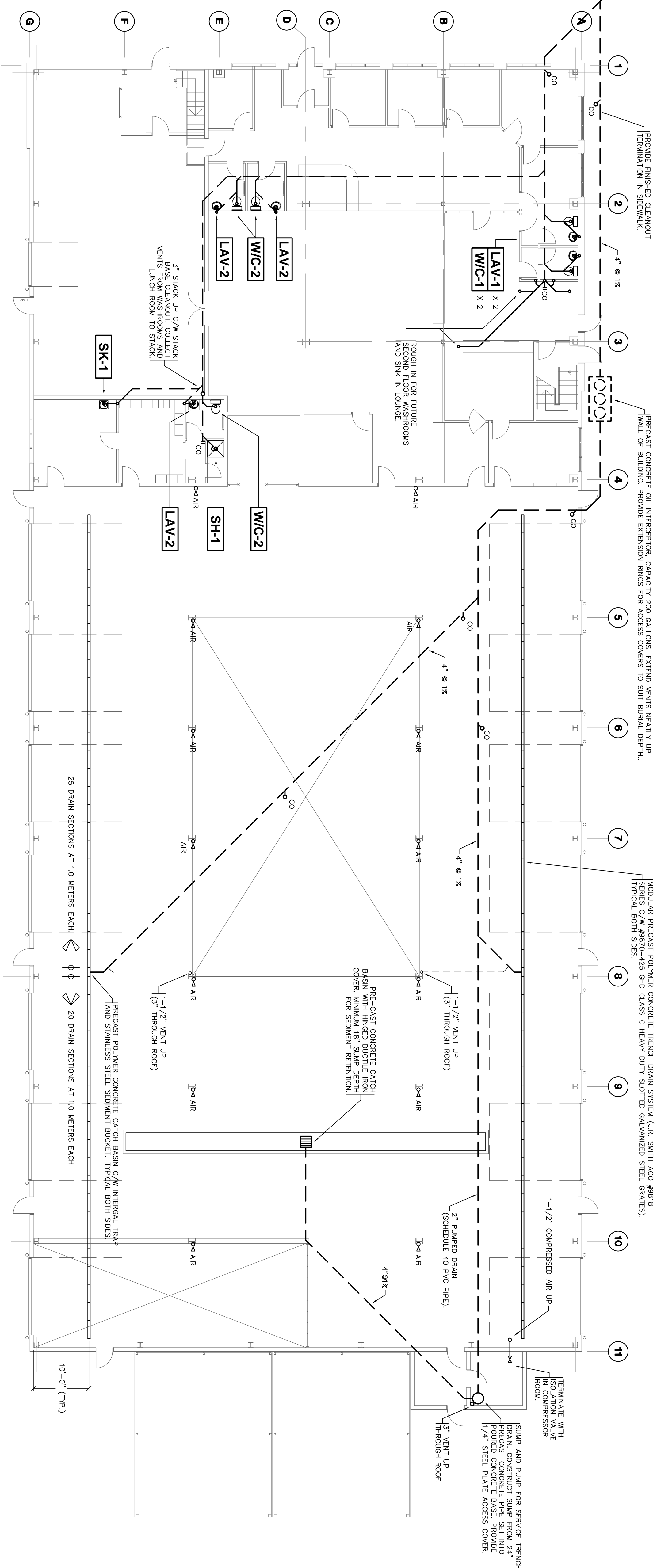
RONNEY ENGINEERING LIMITED
 CONSULTING
 KINGSTON
 ONTARIO
 ENGINERS
 542-5092

GENERAL CONTRACTORS
 EMMONS & MITCHELL CONSTRUCTION
 592 JUSTUS DR. KINGSTON, ONT.

TYPICAL COMPRESSED AIR DROP
 SCALE: N.T.S.



MEZZANINE PLAN
 SCALE: 3/32"=1'-0"



FLOOR PLAN
 SCALE: 3/32"=1'-0"

Atira ENGINEERING
 A Division of TETRA TECH ENGINEERING Limited
 700 Dalton Avenue
 Kingston, Ontario
 K7M 6R8
 Tel: 613-548-7440
 Fax: 613-548-7440
 www.atira-engineering.com

Project
 INTERNATIONAL TRUCKS
 DALTON, AVENUE
 KINGSTON
 ONTARIO

Drawing
 SANITARY
 &
 COMPRESSED AIR

Scale
 AS SHOWN

Designed By
 D.J.

Project Date
 MAR. 2004

Drawn By
 M.R.

Project No.
 0406

Drawing No.
 M-2

Revision No.
 2

Revision Date
 07 JUNE 04

COPYRIGHT
 This drawing and design is the property of Atira Engineering and shall not be reproduced, stored in a retrieval system, or transmitted in any form or by any means, electronic, mechanical, photocopying, recording, or by any information storage and retrieval system, without the express written consent of Atira Engineering.
DO NOT SCALE DRAWINGS
 Drawings may have been enlarged or reduced from original. Check against original drawings for accuracy. Do not rely on dimensions shown on drawings. Any discrepancies to be corrected before proceeding with work. If in doubt, ASK...

RONNEY ENGINEERING LIMITED
 CONSULTING
 KINGSTON
 ONTARIO
 ENGINERS
 542-5092

GENERAL CONTRACTORS
EMMONS & MITCHELL CONSTRUCTION
 592 JUSTUS DR. KINGSTON, ONT.

Project North
 Professional Seal

REV.	DATE:	ISSUED FOR:	DESCRIPTION
2	07 JUNE 2004	ISSUED FOR TENDERS	
1	07 MAY 04	ISSUED FOR REVIEW BY OWNER	

Atira ENGINEERING
 A Division of TETTER ENGINEERING Limited
 700 Dalton Avenue
 Kingston, Ontario
 K7M 6N8
 Tel: 613-548-7440
 Fax: 613-535-9600
 www.atira-eng.com

Project
INTERNATIONAL TRUCKS
 DALTON, AVENUE
 KINGSTON
 ONTARIO

Drawing
DOMESTIC WATER

Scale
AS SHOWN

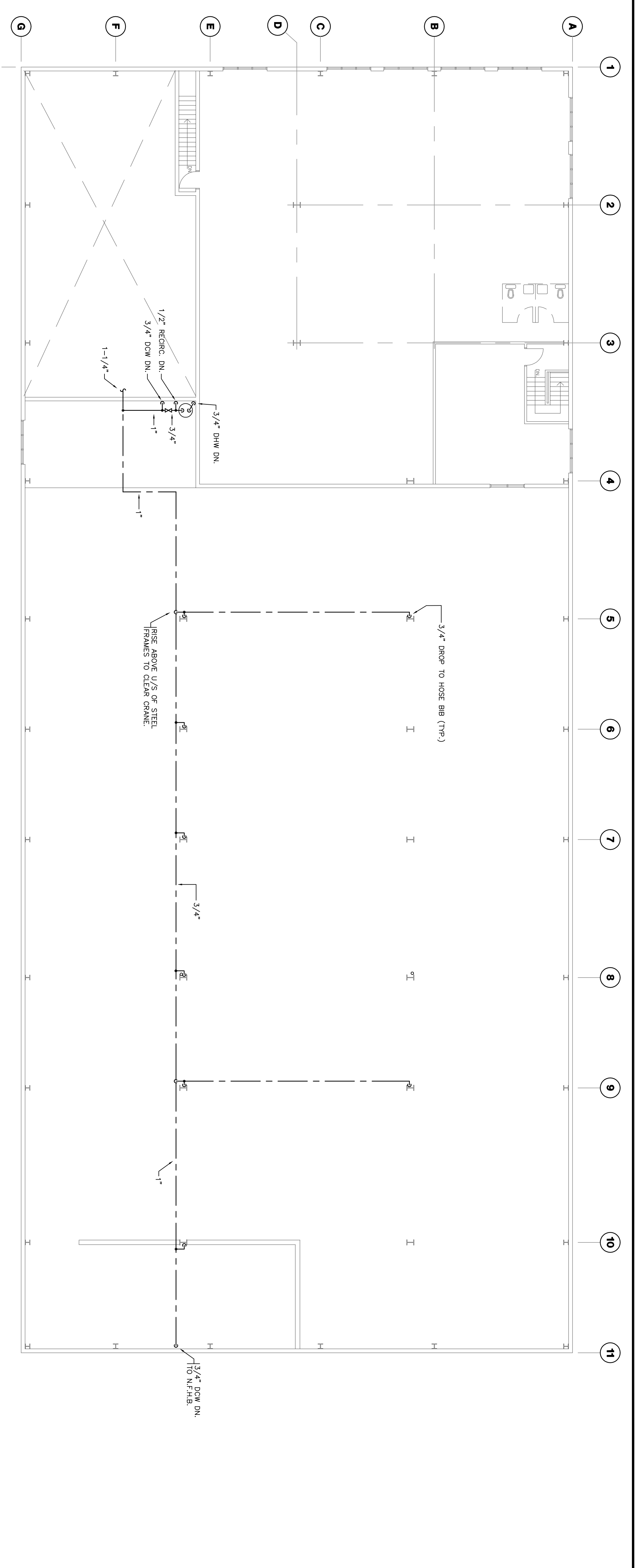
Designed By
 D.J.
 Project Date
 MAR. 2004

Drawn By
 M.R.
 Project No.
 0406

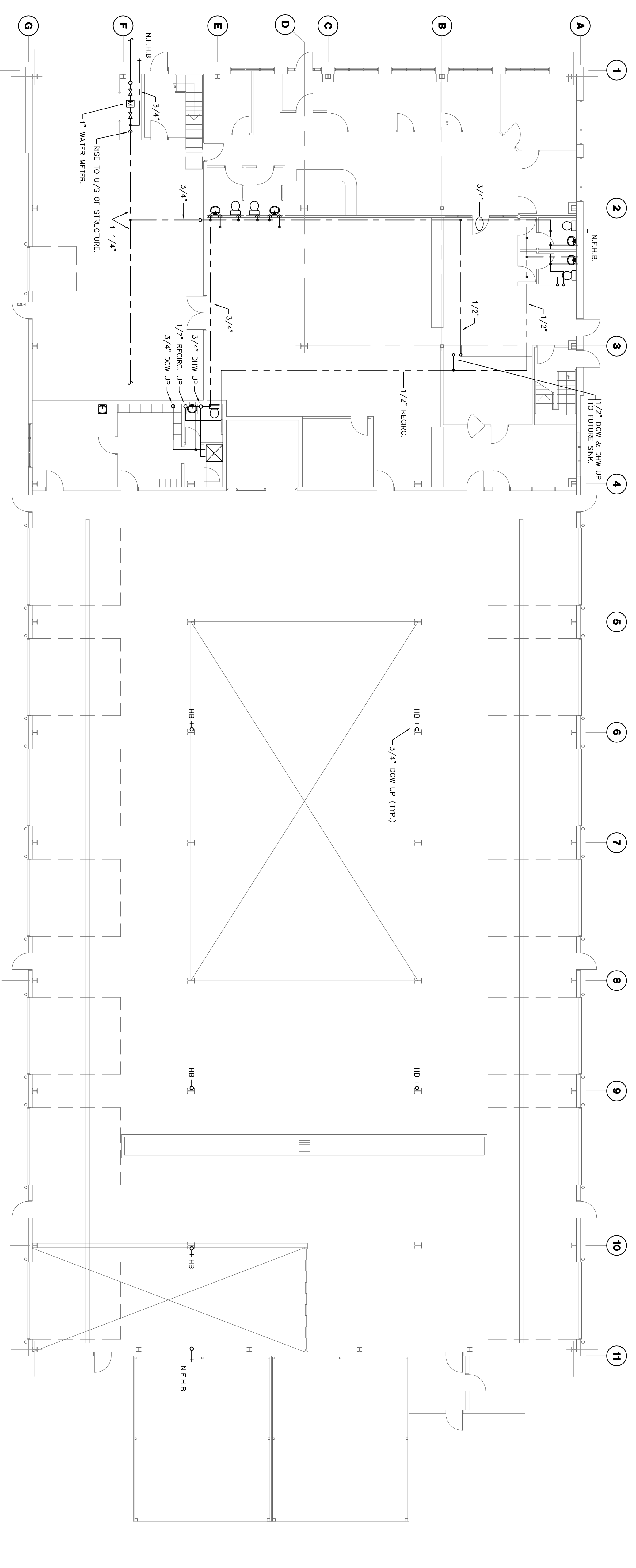
Drawing No.
M-3

Revision Date
 07 JUNE 04

Revision No.
 2



MEZZANINE PLAN
 SCALE: 3/32"=1'-0"



FLOOR PLAN
 SCALE: 3/32"=1'-0"

This drawing and design is the property of Atira Engineering, and shall not be reproduced or distributed, in whole or in part, for any purpose other than the intended professional use. All rights reserved.
DO NOT SCALE DRAWINGS
 Drawings may have been enlarged or reduced from original. Check against graphic scale below. Check and verify all dimensions, and report any discrepancies to the design office.
IF IN DOUBT, ASK...

Project North	Professional Seal								
<table border="1"> <tr> <th>REV.</th> <th>DATE</th> <th>ISSUED FOR BALANCE PERMIT</th> <th>DESCRIPTION</th> </tr> <tr> <td>0</td> <td>OCT. 15/09</td> <td>ISSUED FOR BALANCE PERMIT</td> <td></td> </tr> </table>		REV.	DATE	ISSUED FOR BALANCE PERMIT	DESCRIPTION	0	OCT. 15/09	ISSUED FOR BALANCE PERMIT	
REV.	DATE	ISSUED FOR BALANCE PERMIT	DESCRIPTION						
0	OCT. 15/09	ISSUED FOR BALANCE PERMIT							

Atira ENGINEERING
 A Division of T&E Engineering Limited
 141A Hickson Avenue
 Kingston, Ontario
 K7K 2N7
 Tel: 613-548-7440
 Fax: 613-548-3793
 www.atira-eng.com

Project
KINGSTON TRUCKING CENTRE
 750 DALTON AVE.
 KINGSTON, ONTARIO

Drawing
SECOND FLOOR RENOVATIONS
 HVAC

Scale
AS SHOWN

Designed By
F.K.

Drawn By
M.R.

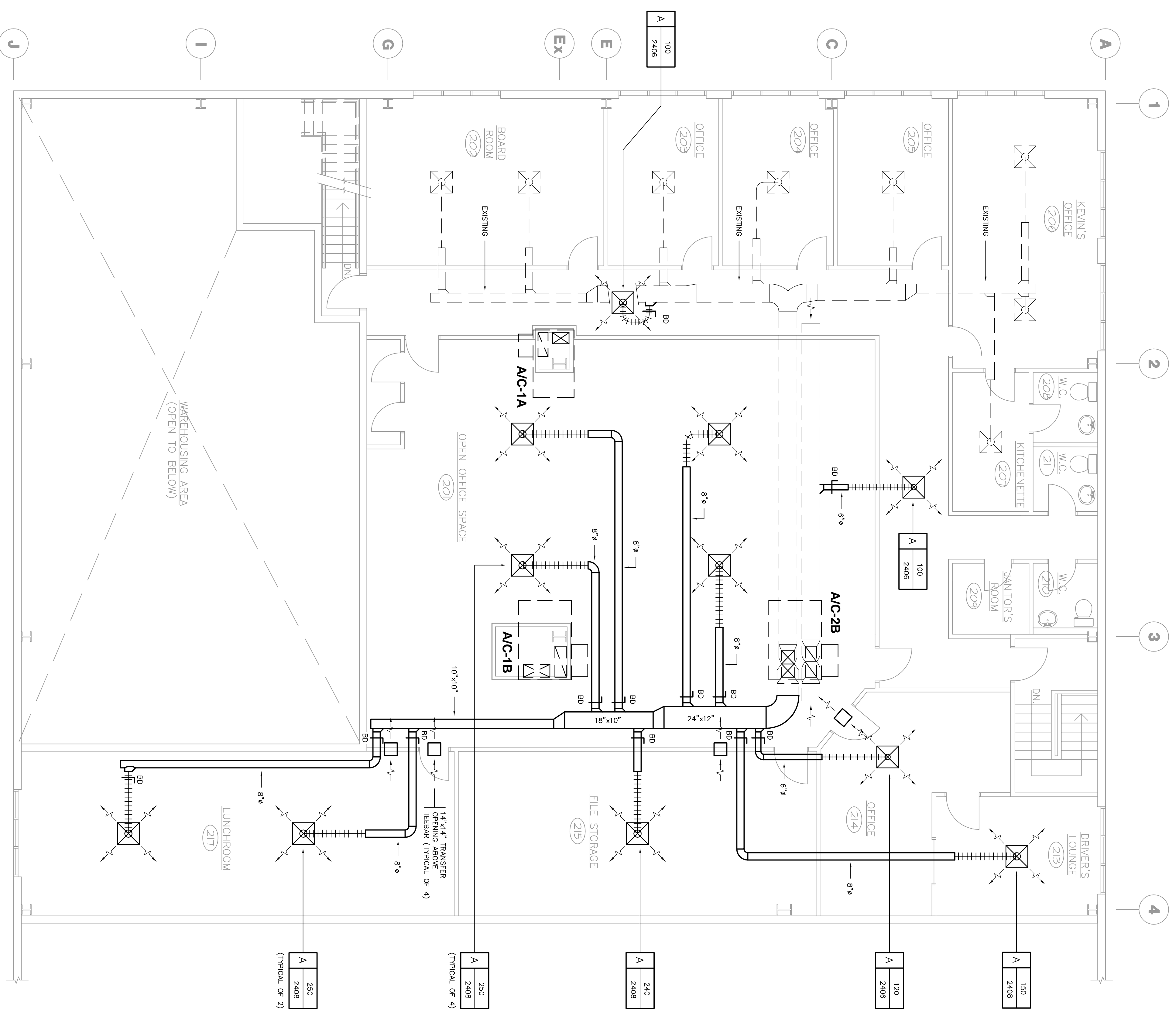
Project Date
OCT. 2009

Project No.
0924

Drawing No.
M-1

Revision Date
OCT. 15/09

Revision No.
0



SPECIFICATIONS:

COOSES AND STANDARDS:
 ALL HVAC WORK SHALL BE IN ACCORDANCE WITH THE ONTARIO BUILDING CODE.
 ALL DUCTWORK SHALL BE FABRICATED AND INSTALLED IN ACCORDANCE WITH ASHRAE AND SMACNA STANDARDS.

DUCTWORK:
 GALVANIZED SHEET STEEL (G90 TO ASTM A525) WITH METAL GAUGES IN ACCORDANCE WITH SMACNA HVAC DUCT CONSTRUCTION STANDARDS. METAL AND FLEXIBLE TO SUIT DUCT SIZE AND PRESSURE CLASSIFICATION. SEAL TRANSVERSE JOINTS WITH SYNTHETIC LATEX DUCT SEALER.
 SPIRALLY WOUND GALVANIZED STEEL DUCTWORK WITH FACTORY MADE FITTINGS.
 SPIRALLY WOUND, CONTINUOUS LOCK SEAM, FLEXIBLE CORRUGATED ALUMINUM DUCT FOR FINAL CONNECTION TO DIFFUSERS. MAXIMUM LENGTH 8'-0".
 CONSTRUCT DUCTWORK WITH FULL RADIUS FITTINGS WHERE SPACE PERMITS. WHERE SPACE IS INADEQUATE USE SQUARE ELBOWS WITH TURNING VANES.
 PROVIDE TAKE-OFFS COMPLETE WITH BALANCING DAMPERS FOR RUN-OUTS TO DIFFUSERS WHERE INDICATED.

AIR BALANCING:
 ADJUST AIR DELIVERY AT ALL TERMINALS TO WITHIN 5% OF QUANTITIES SHOWN. INCLUDE COPIES OF AIR BALANCING REPORT IN OPERATING AND MAINTENANCE MANUALS.
SHIP DRAWINGS:
 SUBMIT SHOP DRAWINGS FOR:
 - GRILLES AND DIFFUSERS

CLOSE-OUT DOCUMENTATION:
 SUBMIT TWO (2) COPIES OF MECHANICAL OPERATING AND MAINTENANCE MANUALS AT COMPLETION OF WORK. MANUALS SHALL BE ASSEMBLED IN HARD COVERED J-RING BINDERS AND SHALL INCLUDE THE FOLLOWING:
 - STATEMENT OF WARRANTY
 - STATEMENT OF WORK PERFORMED
 - INSTALLATION AND MAINTENANCE INFORMATION FOR ALL EQUIPMENT
 - AIR BALANCING REPORT
 SUBMIT ONE SET OF WHITE PRINTS CAREFULLY MARKED UP IN RED PEN TO SHOW ALL DEVIATIONS IN CONSTRUCTION FROM WORKING DRAWINGS.

NOTE:

FOR EACH SUPPLY DIFFUSER PROVIDE 24"x6" EGGRATE RETURN GRILLE. EXACT LOCATION TO BE DETERMINED ON CEILING T-BANK LAYOUT.

GRILLE & DIFFUSER SCHEDULE

TYPE	DESCRIPTION	MANUFACTURER	MODEL No.	BORDER & FRAME	REMARKS
A	CEILING DIFFUSER	E.H. PRICE	S2D	T-BARK	

TYPE	AIR FLOW, CFM	SIZE, INCHES
A	200	
A	2408	

- NOTES:**
- ALL GRILLES AND DIFFUSERS IN ACCORDANCE WITH FINAL ARCHITECTURAL REFLECTED CEILING PLANS AND DETAILED ELEVATIONS.
 - CONTROL FRAME STYLES AND FINISHES PRIOR TO ORDERING.
 - ACCEPTABLE MANUFACTURERS ARE E.H. PRICE, NAJORK, CARNES AND ANEMOSTATI.