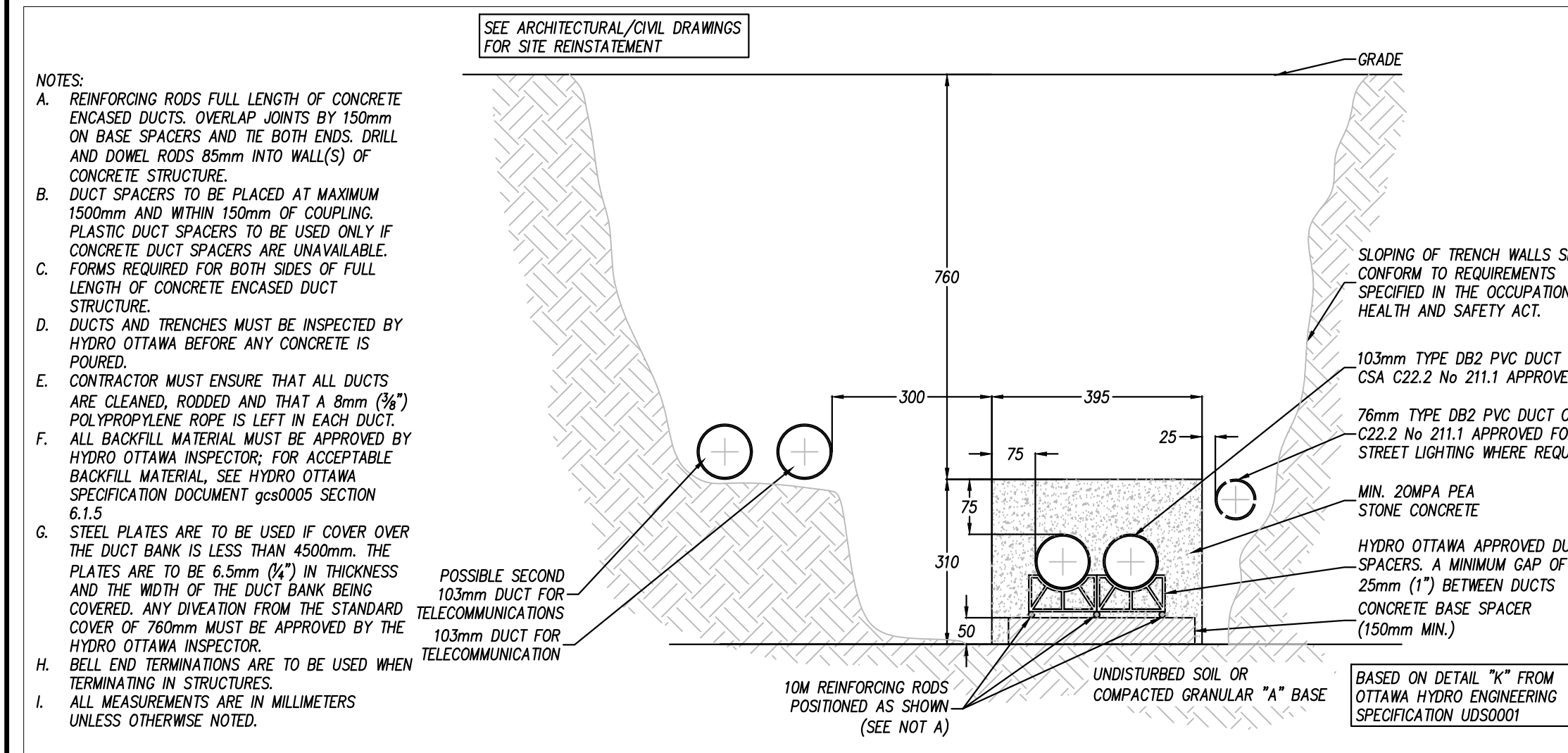


CONSTRUCTION DATA TABLE					
WORK LOCATION #	NOMENCLATURE ID#	TABLE OF UG OR OH STRUCTURE OR DEVICE	CIVIL STANDARDS	ELECTRICAL STANDARDS	INSTRUCTIONS
L1	X283708HH S27895	POLE LATERAL	UDS0023	OGS0001	CIVIL UDS0023 - DETAIL B + E NEW GROUND ROD TO BE INSTALLED (IF REQUIRED)
L2		1H X 2W CONCRETE ENCASED DUCT STRUCTURE	UDS0001 UDS0032 UDC0032		CIVIL UDS0001 - DETAIL K 1.5m LARGE RADIUS BEND ELECTRICAL UDS0032 INSTALL 1/0 AL 15kV CABLE FROM S27895 TO TP11968
L3		1H X 2W DIRECT BURIED DUCT STRUCTURE			CIVIL DIRECT BURIED DUCT STRUCTURE TO BE ABANDONED ELECTRICAL EXISTING PRIMARY CABLE TO BE REMOVED

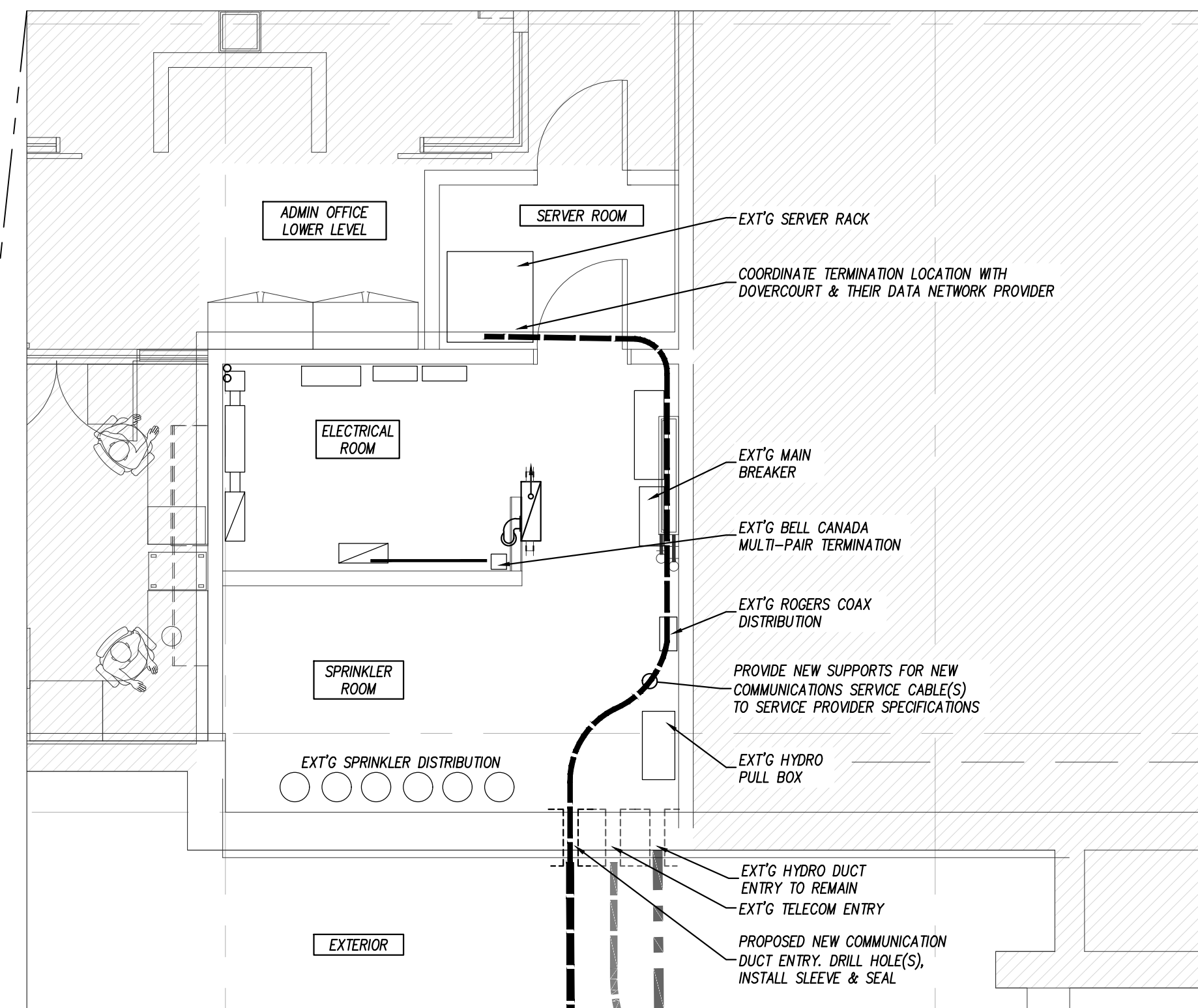
- NOTES:
- Hydro Ottawa will hire an approved contractor to complete all civil work within 2.0m of energized equipment.
  - Hydro Ottawa will be responsible for installing the bollards and grounding around the existing padmount transformer. Reinstatement completed by owner's (project) contractor.
  - Hydro Ottawa will be responsible for the concrete pole lateral and 2.0m of concrete encased duct structure around the existing pole.
  - Hydro Ottawa Qualified Contractor to complete the scope of civil work from existing duct structure located 2.0m from transformer to within 2.0m of the existing service pole.
  - All duct structure work, including backfill to be carried out by Hydro Ottawa approved contractor.

INFORMATION PROVIDED BY HYDRO OTTAWA

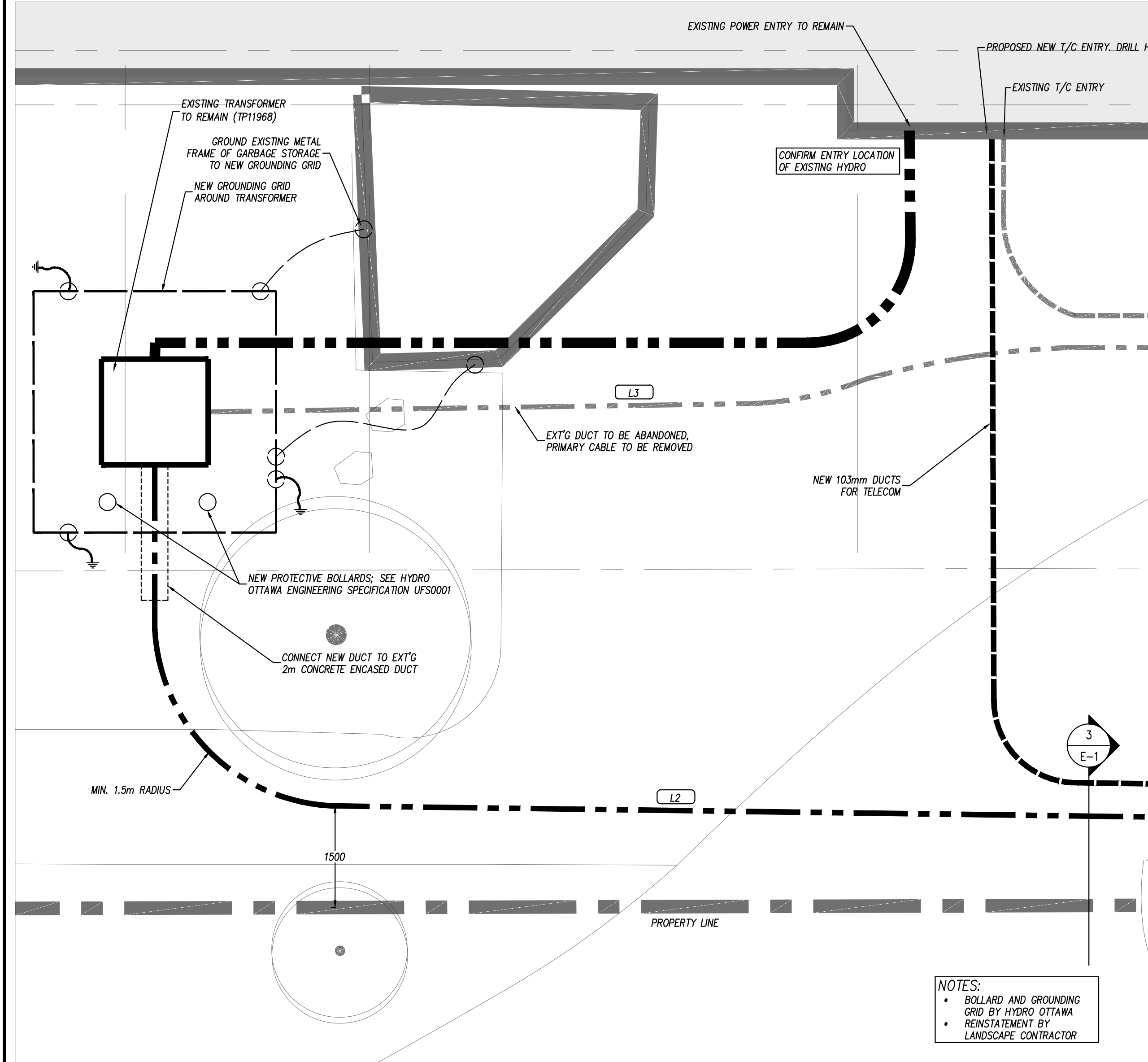


3 POWER DUCT SECTION DETAIL 1:10

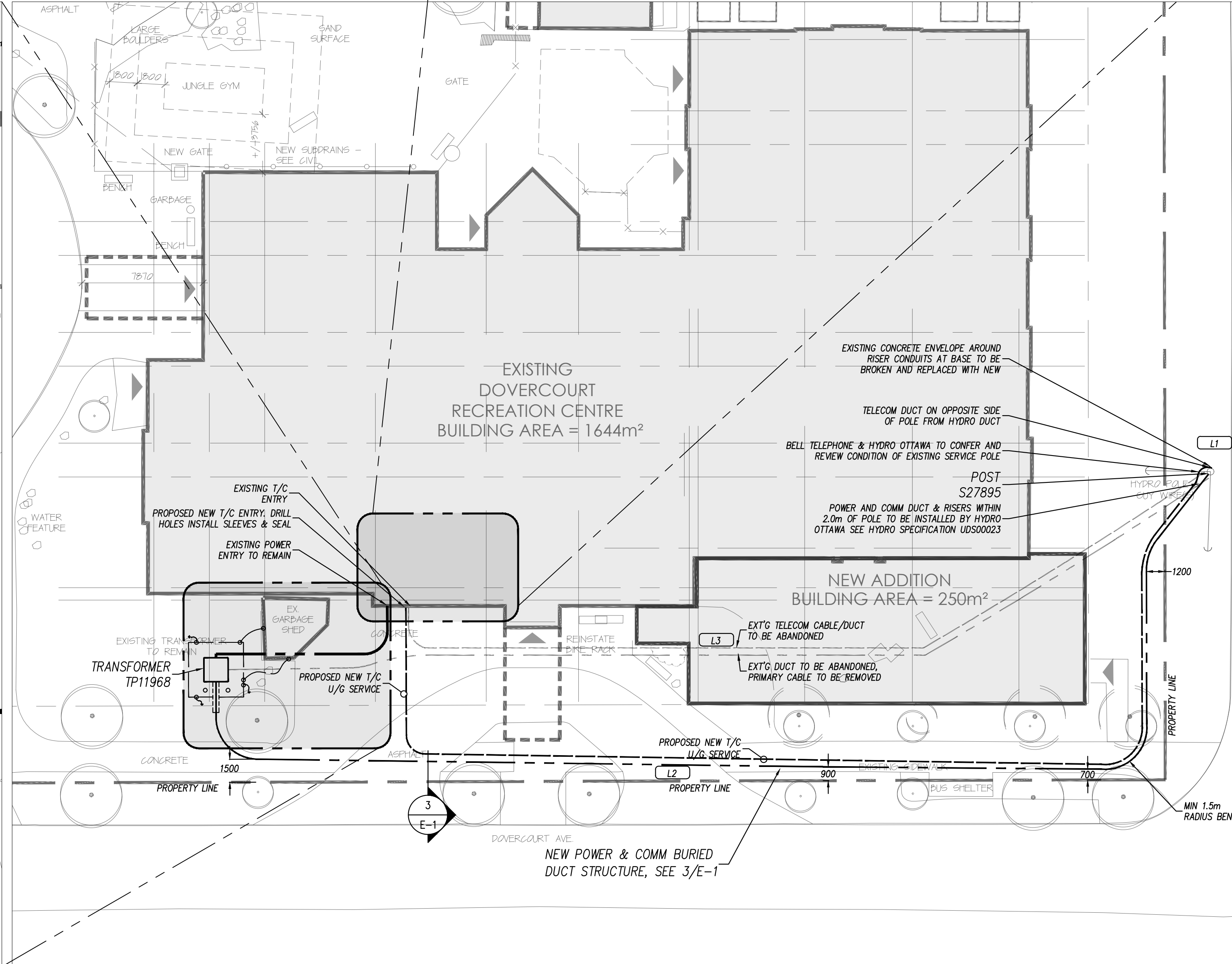
- GENERAL NOTES
- All construction shall be completed using approved Hydro Ottawa construction standards (latest edition) and/or details specified in the project drawing(s).
  - External workforces may obtain the latest edition of applicable Hydro Ottawa standards and/or design specifications at [www.hydroottawa.com](http://www.hydroottawa.com).
  - Prior to undertaking work within the safe limits of approach to Hydro Ottawa overhead plant (as defined in the Occupational Health and Safety Act), contact the designated Hydro Ottawa project manager or Hydro Ottawa Service Desk at 613-738-6400, Option 4.
  - Obtain utility locates prior to commencement of any excavation.
  - Where excavation within 1.5 metres of Hydro Ottawa underground plant, contact the designated Hydro Ottawa project manager or Hydro Ottawa Service Desk at 613-738-6400, Option 4.
- PROJECT NOTES
- Where existing grades are greater or less than 150mm of final grade, grade stakes indicating final grade shall be provided at, or along each installation as required by Hydro Ottawa.
  - As-Built drawing(s) shall be completed for this project. Each drawing issued for construction shall be marked "As-Built" with the appropriate Hydro Ottawa Construction Verification Program (CVP) sign-offs completed.
  - All secondary service cables on private sites shall be installed, owned and maintained by the Developer unless otherwise noted by Hydro Ottawa.
  - The Developer shall supply all cable lugs and terminate all Customer-owned cables at the transformer.
  - Primary cable shall be installed in accordance with Hydro Ottawa specification GCS0004 unless otherwise noted.
  - Connection to existing concrete duct banks shall be completed by an approved Hydro Ottawa contractor. All work on existing Hydro Ottawa plant shall be completed in the presence of a Hydro Ottawa inspector and in accordance with the Occupational Health and Safety Act.
  - Civil work shall be installed in accordance with Hydro Ottawa specification GCS0005 unless otherwise noted.
  - Completed ducts shall be rodded by the site contractor in the presence of a Hydro Ottawa inspector and shall be clear of all extraneous material. A mandrel to nominal diameter of the duct and approved by Hydro Ottawa will be passed through each duct. One (1) 3mm polypropylene rope shall be left in each duct.
  - Underground secondary cable terminations and testing shall be in accordance with Hydro Ottawa guideline GCS0001, by others.



4 ELECTRICAL ROOM DUCT ENTRY DETAIL 1:50



2 DUCTS TRANSFORMER & ENTRY 1:50



1 POWER & COMMUNICATIONS DUCT SITE PLAN 1:200

**Ottawa**  
 DEPARTMENT OF CORPORATE SERVICES / SERVICES GÉNÉRAUX  
 REAL PROPERTY ASSET MANAGEMENT BRANCH /  
 DIRECTION DE LA GESTION DES ACTIFS ET DES BIENS IMMOBILIERS  
 DESIGN AND CONSTRUCTION DIVISION /  
 DIVISION DE LA CONCEPTION ET DE LA CONSTRUCTION  
 GREG GEDDES CHIEF CORPORATE SERVICES OFFICER /  
 CHEF DES SERVICES GÉNÉRAUX  
 S.A. FINNAMORE, O.A.A. DIRECTOR / DIRECTEUR, O.A.O.  
 ROBERT VAILLANCOURT, O.A.A. MANAGER / GESTIONNAIRE, O.A.O.  
 FOR / POUR  
**CORPORATE SERVICES**  
**REAL PROPERTY ASSET MANAGEMENT**  
**DESIGN & CONSTRUCTION**

**Dovercourt**  
 RECREATION CENTRE

**Hobin Architecture**  
 Incorporated  
 63 Pamela Street  
 Ottawa, Ontario  
 Canada K1S 3K7  
 T: 613-238-7200  
 F: 613-235-9005  
 E: [info@hobinarc.com](mailto:info@hobinarc.com)  
[hobinarc.com](http://hobinarc.com)  
**HOBIN**  
 ARCHITECTURE

NO.	REVISIONS	DATE
10.		
9.		
8.		
7.		
6.		
5.		
4.		
3.	ISSUED FOR ELECTRICAL ADDENDUM EA-01	2017-08-11
2.	ISSUED FOR BUILDING PERMIT	2017-07-27
1.	ISSUED FOR COORDINATION	2017-07-14

USE OF THESE DRAWINGS IS RESTRICTED SOLELY TO THE CONSTRUCTION FOR WHICH THEY WERE DEVELOPED. BEKOLAY AND ASSOCIATES LTD. ASSUME NO RESPONSIBILITY FOR ANY SUBSEQUENT USE. DO NOT SCALE THE DRAWINGS BUT RESPECT ANY DIMENSIONS SPECIFICALLY IDENTIFIED IN NOTES OR TEXT. ALL CONTRACTORS MUST VISIT THE SITE AND ARE RESPONSIBLE FOR VERIFYING ANY AND ALL DIMENSIONS THAT RELATE TO THEIR WORK. REPORT ANY DISCREPANCIES IMMEDIATELY TO THE CONSULTANT.

**BEKOLAY & Associates Ltd.**  
 Consulting Engineers  
 200 1617 WOODWARD DR. OTTAWA  
 ON K1S 2G4  
 TEL: 613-723-0474 FAX: 613-723-0864  
 email: [jbekolay@bekolay.ca](mailto:jbekolay@bekolay.ca)

16-Aug-17

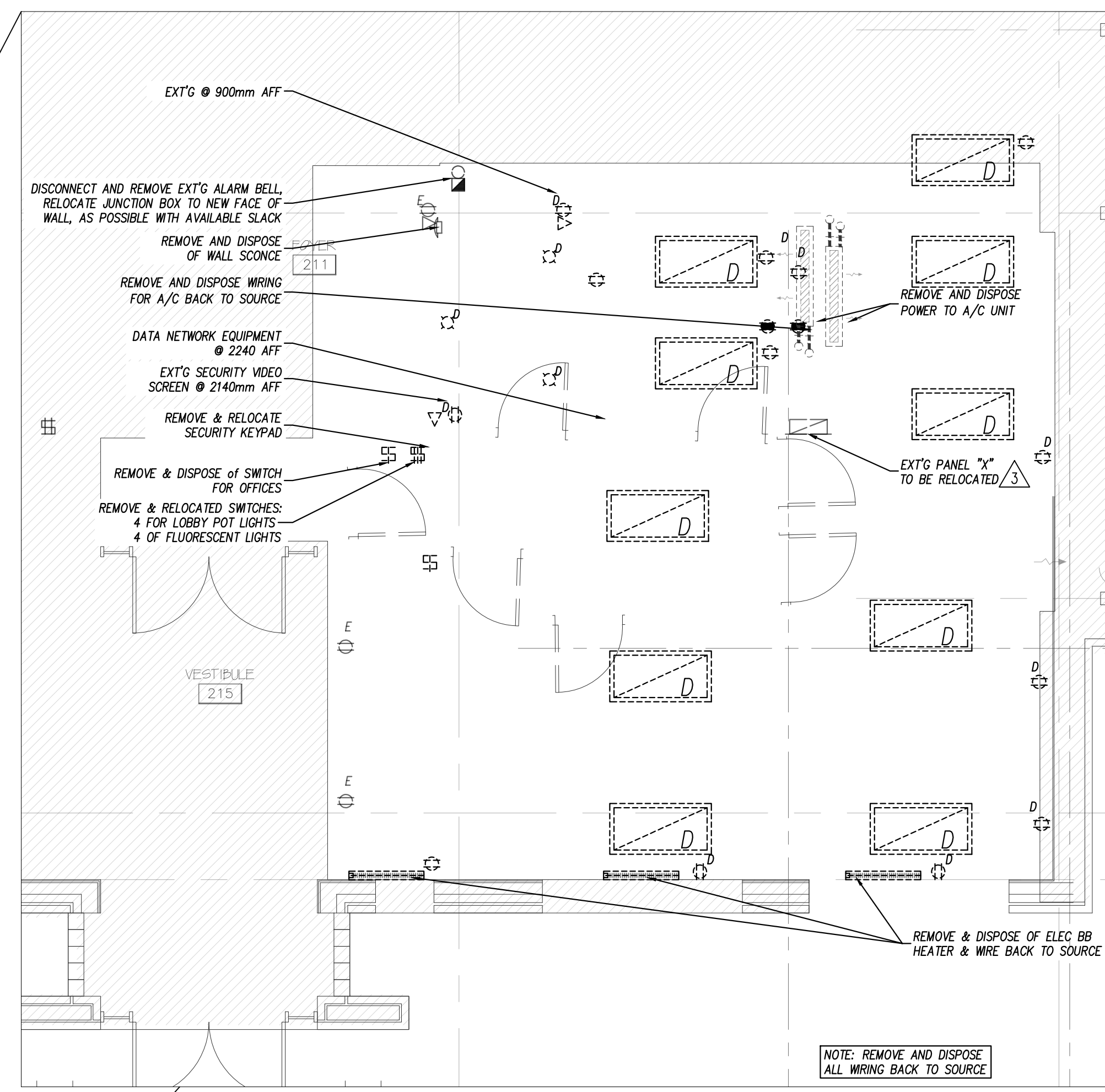
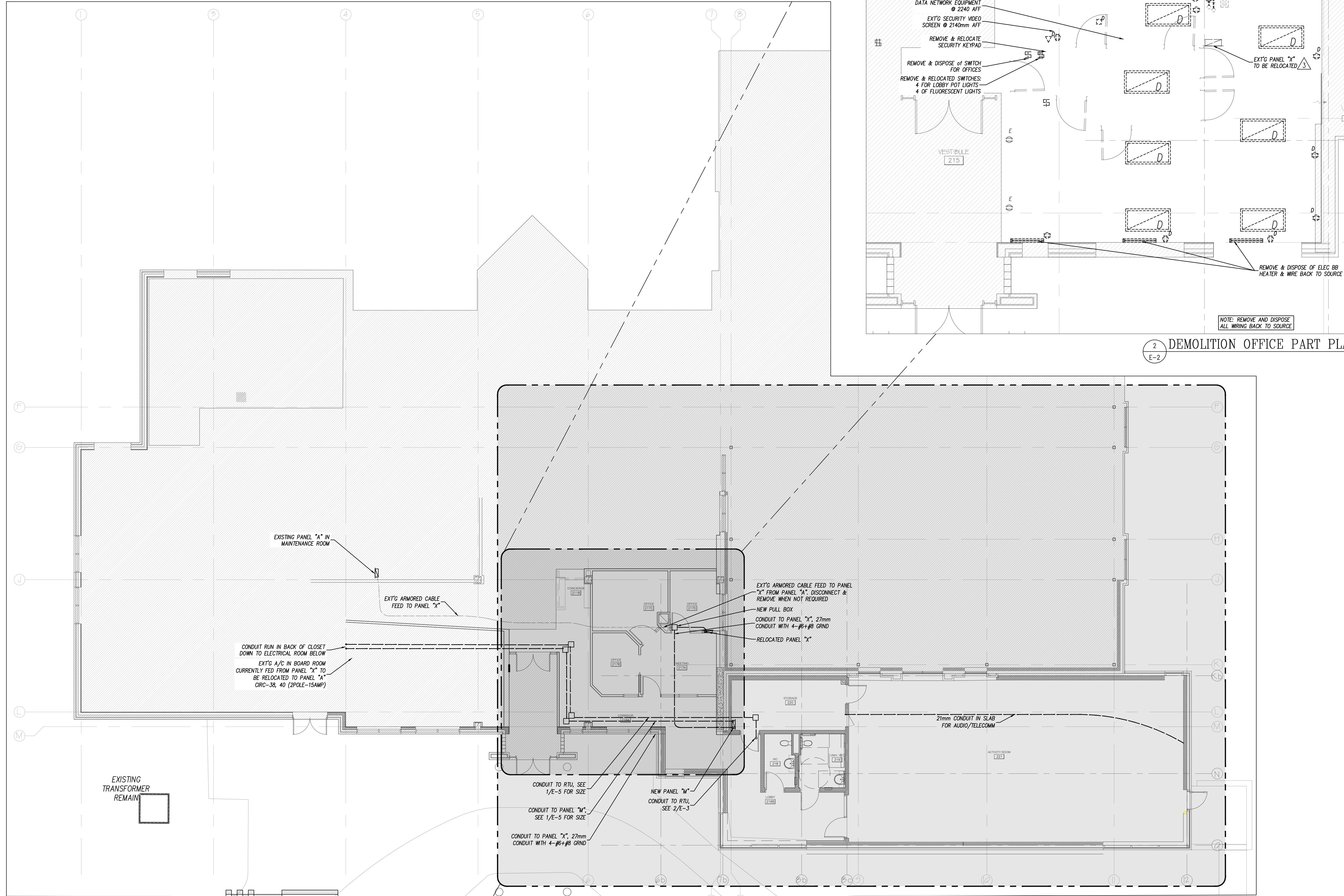
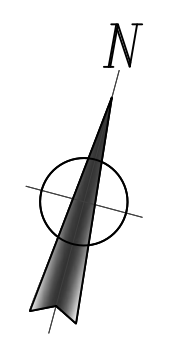
PROJECT **Dovercourt 2017 Phase 2**  
 DRAWING **Service Feed Site Plan**

DATE	SCALE
16-Aug-17	AS NOTED
DRAWN BY <b>MAG</b>	DESIGNED BY <b>CLW</b>
JOB NO. <b>2017-009</b>	CHECKED BY <b>CLW</b>
DRAWING NO.	



Hobin Architecture Incorporated

63 Pamela Street  
 Ottawa, Ontario  
 Canada K1S 3K7  
 T: 613-239-7209  
 F: 613-235-8065  
 E: ma@hobin.com



2 DEMOLITION OFFICE PART PLAN  
 E-2 1:50

1 KEY PLAN  
 E-3 E-4 1:100

10.		
9.		
8.		
7.		
6.		
5.		
4.		
3.	ISSUED FOR ELECTRICAL ADDENDUM EA-01	2017-08-11
2.	ISSUED FOR BUILDING PERMIT	2017-07-27
1.	ISSUED FOR COORDINATION	2017-07-14
NO.	REVISIONS	DATE

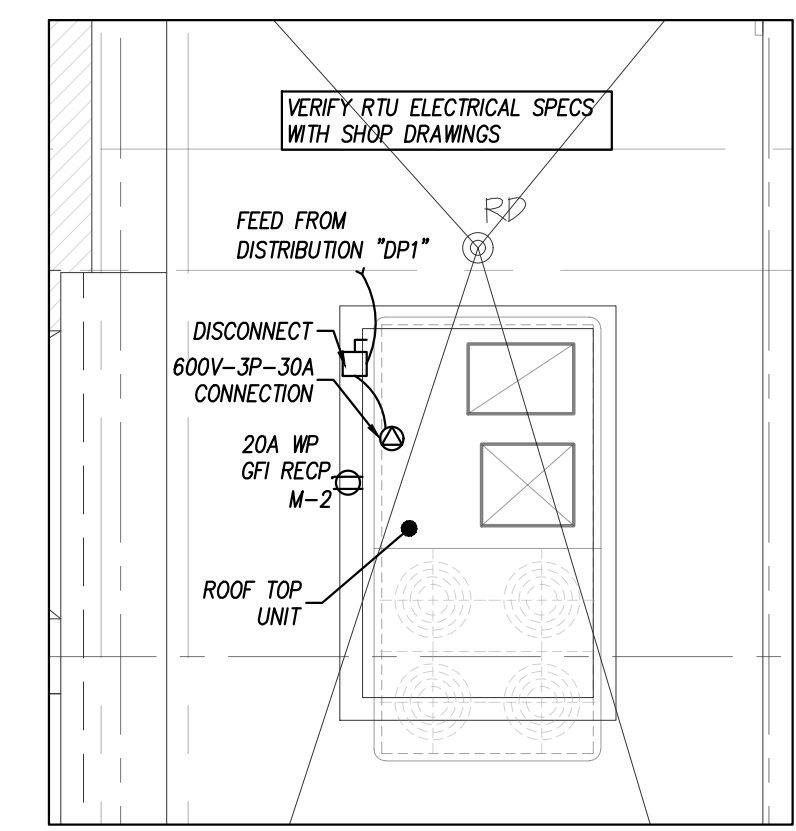
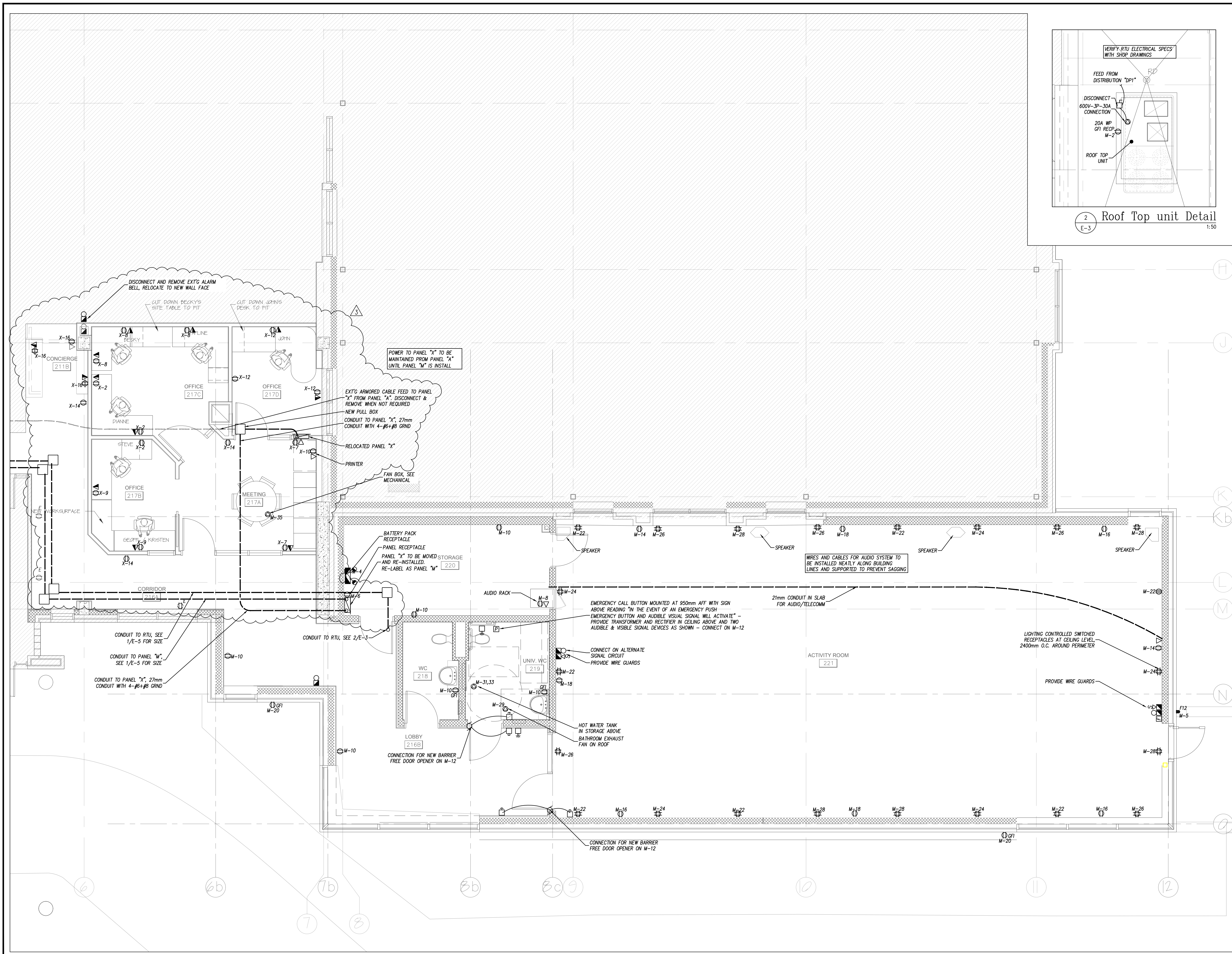
USE OF THESE DRAWINGS IS RESTRICTED SOLELY TO THE CONSTRUCTION FOR WHICH THEY WERE DEVELOPED. BEKOLAY AND ASSOCIATES LTD. ASSUME NO RESPONSIBILITY FOR ANY SUBSEQUENT USE. DO NOT SCALE THE DRAWINGS BUT RESPECT ANY DIMENSIONS SPECIFICALLY IDENTIFIED IN NOTES OR TEXT. ALL CONTRACTORS MUST VISIT THE SITE AND ARE RESPONSIBLE FOR VERIFYING ANY AND ALL DIMENSIONS THAT RELATE TO THEIR WORK. REPORT ANY DISCREPANCIES IMMEDIATELY TO THE CONSULTANT.

**BEKOLAY & Associates Ltd.**  
 Consulting Engineers  
 200-1827 MONROE DR., OTTAWA  
 ON K1H 8S4  
 PH: 613-723-0474 FAX: 613-723-0884  
 EMAIL: bekolay@bega.ca

16-Aug-17

PROJECT: Dovercourt 2017 Phase 2  
 DRAWING: CONDUIT (KEY) PLAN DEMOLITION PART PLAN

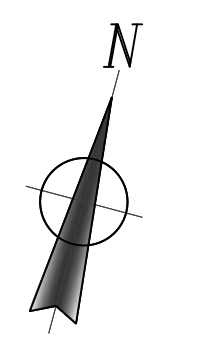
DATE:	16-Aug-17	SCALE:	AS NOTED
DRAWN BY:	MAG	DESIGNED BY:	CLW
JOB NO.:	2017-009	CHECKED BY:	CLW
DRAWING NO.:			



2 Roof Top unit Detail  
E-3 1:50



**Hobin Architecture Incorporated**  
 63 Pamela Street  
 Ottawa, Ontario  
 Canada K1S 3K7  
 T: 613-239-7200  
 F: 613-235-8065  
 E: info@hobin.com  
 hobinarc.com



NO.	REVISIONS	DATE
10.		
9.		
8.		
7.		
6.		
5.		
4.		
3.	ISSUED FOR ELECTRICAL ADDENDUM EA-01	2017-08-11
2.	ISSUED FOR BUILDING PERMIT	2017-07-27
1.	ISSUED FOR COORDINATION	2017-07-14

USE OF THESE DRAWINGS IS RESTRICTED SOLELY TO THE CONSTRUCTION FOR WHICH THEY WERE DEVELOPED. BEKOLAY AND ASSOCIATES LTD. ASSUME NO RESPONSIBILITY FOR ANY SUBSEQUENT USE. DO NOT SCALE THE DRAWINGS BUT RESPECT ANY DIMENSIONS SPECIFICALLY IDENTIFIED IN NOTES OR TEXT. ALL CONTRACTORS MUST VISIT THE SITE AND ARE RESPONSIBLE FOR VERIFYING ANY AND ALL DIMENSIONS THAT RELATE TO THEIR WORK. REPORT ANY DISCREPANCIES IMMEDIATELY TO THE CONSULTANT.

**BEKOLAY & Associates. Ltd.**  
 Consulting Engineers  
 300-1877 WOODWARD DR., OTTAWA  
 ON K1S 3K7  
 TEL: 613-723-0474 FAX: 613-723-0884  
 EMAIL: info@bekolay.com

PROJECT: **Dovercourt 2017 Phase 2**  
 DRAWING: **Level 2 Power Plan**

DATE	SCALE
16-Aug-17	1:50
DRAWN BY: MAG	DESIGNED BY: CLW
JOB NO.: 2017-009	CHECKED BY: CLW
DRAWING NO.	

1 Power Addition Part plan  
E-3 1:50

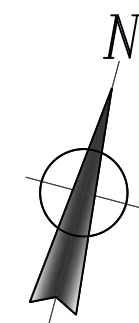


Hobin Architecture  
 Incorporated

63 Pennills Street  
 Ottawa, Ontario  
 Canada K1S 3K7  
 T: 613-238-7200  
 F: 613-235-8065  
 E: info@hobin.com



**HOBIN**  
 ARCHITECTURE



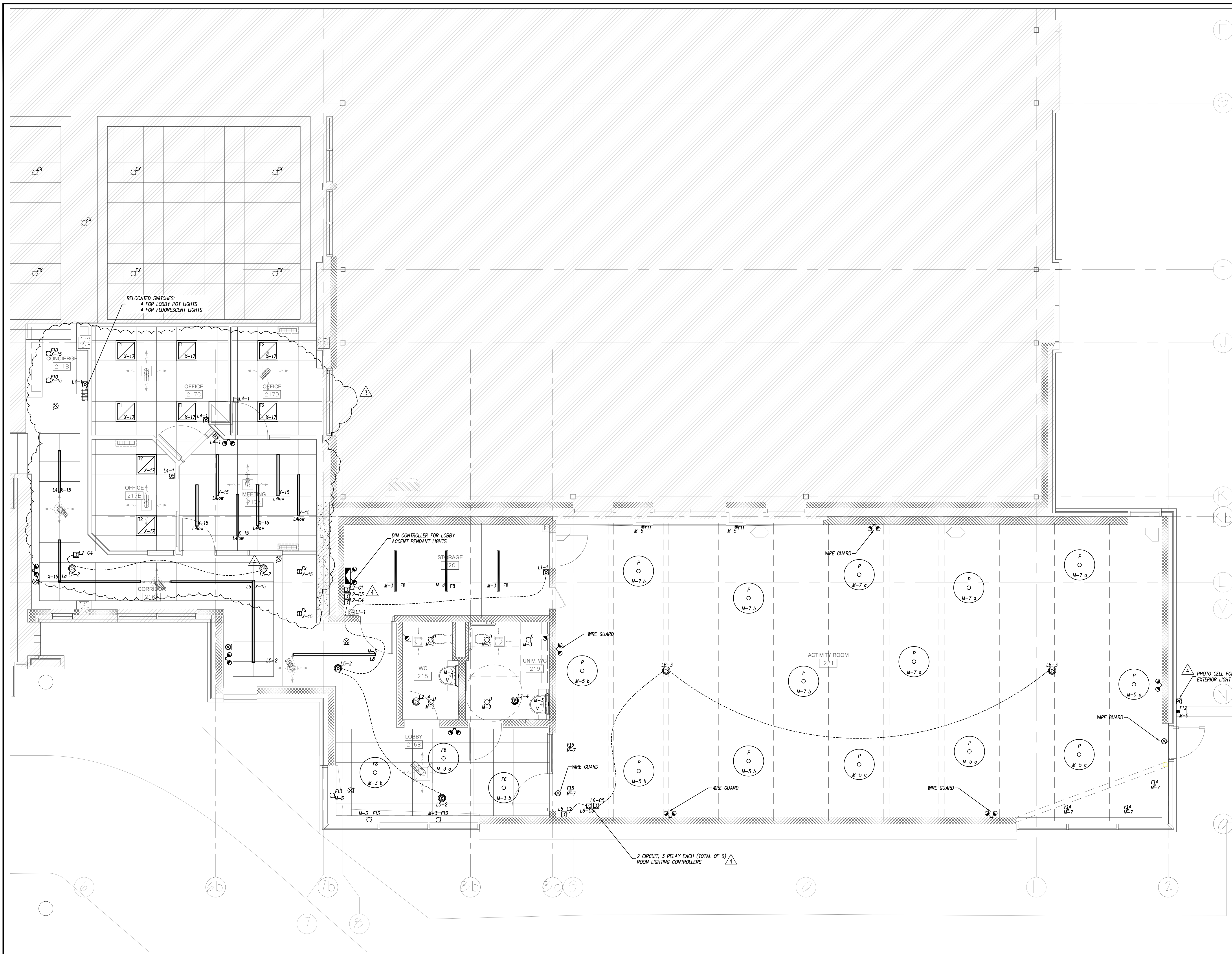
NO.	REVISIONS	DATE
10.		
9.		
8.		
7.		
6.		
5.		
4.	ISSUED FOR ELECTRICAL ADDENDUM EA-02	2017-08-16
3.	ISSUED FOR ELECTRICAL ADDENDUM EA-01	2017-08-11
2.	ISSUED FOR BUILDING PERMIT	2017-07-27
1.	ISSUED FOR COORDINATION	2017-07-14

USE OF THESE DRAWINGS IS RESTRICTED SOLELY TO THE CONSTRUCTION FOR WHICH THEY WERE DEVELOPED. BEKOLAY AND ASSOCIATES LTD. ASSUME NO RESPONSIBILITY FOR ANY SUBSEQUENT USE. DO NOT SCALE THE DRAWINGS BUT RESPECT ANY DIMENSIONS SPECIFICALLY IDENTIFIED IN NOTES OR TEXT. ALL CONTRACTORS MUST VISIT THE SITE AND ARE RESPONSIBLE FOR VERIFYING ANY AND ALL DIMENSIONS THAT RELATE TO THEIR WORK. REPORT ANY DISCREPANCIES IMMEDIATELY TO THE CONSULTANT.



PROJECT **Dovercourt 2017**  
**Phase 2**  
 DRAWING **Lighting Addition Part Plan**

DATE	SCALE
16-Aug-17	AS NOTED
DRAWN BY MAG	DESIGNED BY CLW
JOB NO. 2017-009	CHECKED BY CLW
DRAWING NO.	



1 Lighting Addition Part plan  
 E-4 1:50

