



| TAL-CO SUPPLEMENTAL INSTRUCTION #54 REV01 | | | |
|--|--|----------------|------------------------|
| Project Name: | RW TOMLINSON - NEW HEAD OFFICE | | |
| Project Location: | 100 CitiGate Drive, Ottawa, Ontario | | |
| ARCH. SI #: | ASK 163 | Issued By: | Chris Simpson |
| STRUC. SI #: | SSI 21 - Reviewed | Date Issued: | August 24, 2017 |
| MECH. SI #: | N/A | Revision #: | N/A |
| ELEC. SI #: | N/A | Revision Date: | N/A |

Supplemental Instructions are issued by the Construction Manager to record a clarification or revision to the previously issued Contract Documentation as reflected by the attached information prepared by the identified Professionals.

The Construction Manager shall review the Supplemental Instruction and the attached information and issue to the affected Trade Contractors identifying the following course of action by the Trade Contractor.

Notify TAL-CO within 5 days of receipt, if the attached documents will require a change to Contract Price or Schedule.

Title: Operable Office Partition at Ground Floor Training Rooms

Reference:

Architectural Construction Update - Issued July 28th, 2017

Attachments:

ASK 163

SSI 21 - Reviewed

Operable Partition Shop Drawing

Description of the Work:

Detail provided for Operable Door Partition at Ground Floor Training Rooms 128A & 129A. Review for ceiling detail, clearance, structural beam requirement and drywall bulkhead placement.

Reason:

To provide clarification of detail & dimensions for Operable Partition System between training rooms 128A & 129A.

STRUCTURAL SITE INSTRUCTION



Cleland Jardine Engineering Ltd., 580 Terry Fox Drive, Suite 200, Kanata, Ontario, K2L 4B9, FAX (613) 591-1703, Tel. (613) 591-1533

TO: TALCO Building Innovations DATE: July 20, 2017

ATTENTION: Chris Simpson EMAIL: csimpson@tal-co.com

PROJECT: Tomlinson – New Building PROJECT No.: 15-0179

ISSUED BY: Nas Torabi PAGES (Incl this one): 2

STRUCTURAL SITE INSTRUCTION No.: 21

Affected Drawings

References: S004

Information to be clarified:

GC to revise the Screen Support Beam to W200x21 and delete details Q and N and maintain the L-76x76 kickers. (See attached sketch for clarification)

- NOT REVIEWED
- REVIEWED
- REVIEWED AS NOTED
- REVISE AND RE-SUBMIT



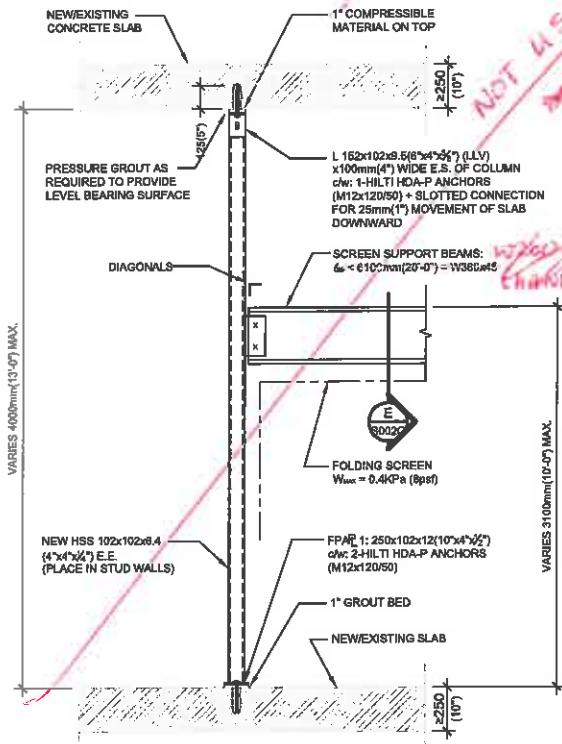
This review is for the sole purpose of ascertaining conformance with the general design concept of the contract documents. The Contractor shall retain all responsibility for the detailed design, fabrication or construction techniques, conformance with dimensions and job site conditions, and any errors or omissions in the shop drawings.

Date: **Aug 18, 2017** By: **MBH**

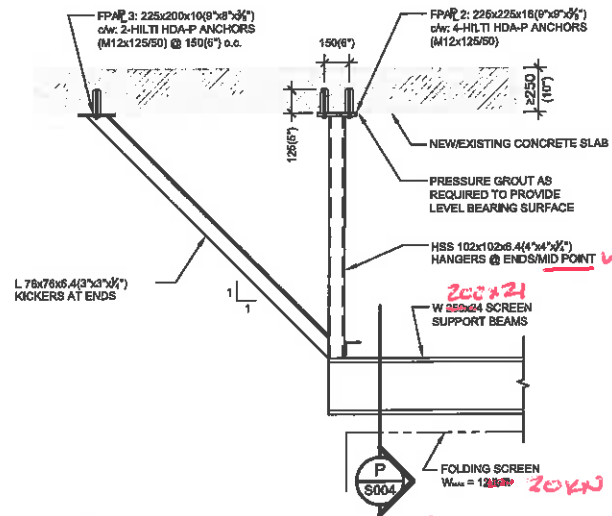
Christopher Simmonds Architect
 The Annex, 45 Eccles Street
 Ottawa, ON K1R6S3
 Ph: 613-567-7888 Fax: 613-567-7528

TYPICAL DETAILS: FOLDING PARTITION SCREENS

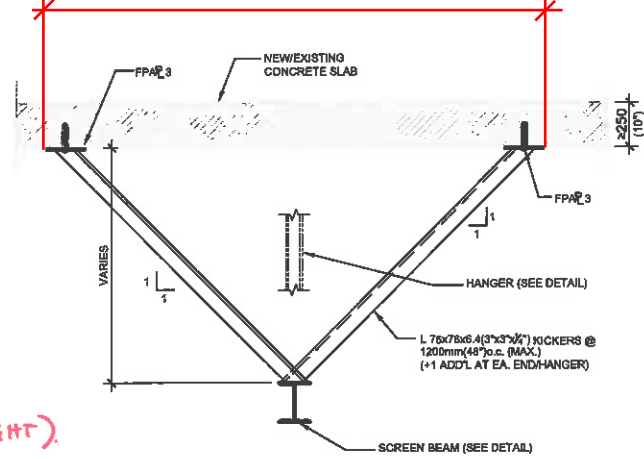
NOTE:
 STEEL SHOP DRAWING SUBMISSIONS TO BE SUBMITTED WITH SCREEN REQUIREMENTS. SCREEN DATA TO INCLUDE WEIGHTS AND DEFLECTION CRITERIA.



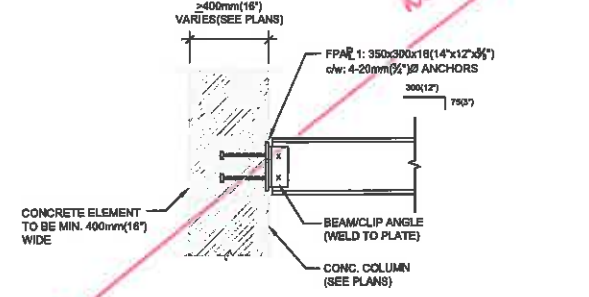
N DETAIL: TYPICAL SCREEN BEAM SUPPORT AT END
 S004 SCALE: 1:25



O DETAIL: SCREEN BEAM SUPPORT: ALTERNATE
 S004 SCALE: 1:25 (MAX ONLY BE USED IF END POST NOT PERMITTED)



P DETAIL: SCREEN BEAM SUPPORT: LATERAL SUPPORTS
 S004 SCALE: 1:25 PROVIDE @ ENDS (SPACING NOTE)



Q DETAIL: SCREEN BEAM SUPPORT @ CONC. COLUMN/WALL
 S004 SCALE: 1:25

NOT USED

Dimension cannot exceed 1677mm

STILL NEED 1400x1400

NOT USED

20x21 20kN (TOTAL WEIGHT)

5500 SERIES

STC .52

- PAIRED PANELS
- ANODIZED ALUMINIUM TRACK
- MANUAL OPERATION
- RETRACTABLE SEALS AT TOP
- RETRACTABLE SEALS AT BOTTOM

ALL DIMENSIONS ARE BASED ON OPENING WIDTH. CORFLEX MUST BE NOTIFIED OF ANY VARIATION OF THE OPENING DIMENSIONS PRIOR TO INSTALLING THE STRUCTURAL SUPPORT SINCE THIS WILL LEAD TO A CHANGE IN STEEL LAYOUT. STEEL MUST BE DRILLED AND INSTALLED AS PER OUR APPROVED SHOP DRAWINGS

PRE-DRILLED STEEL STRUCTURE BY OTHERS (SEE HANGER ROD LAYOUT)

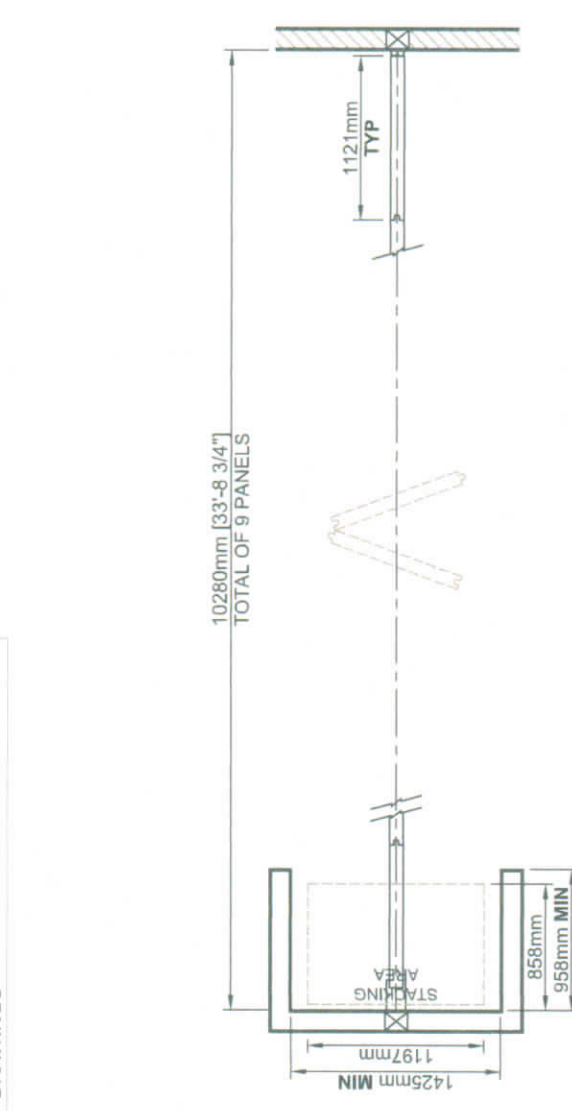
Ø3/8" THREADED RODS BY CORFLEX

SUGGESTION: GYPSUM & ACOUSTICAL INSULATION BY OTHERS

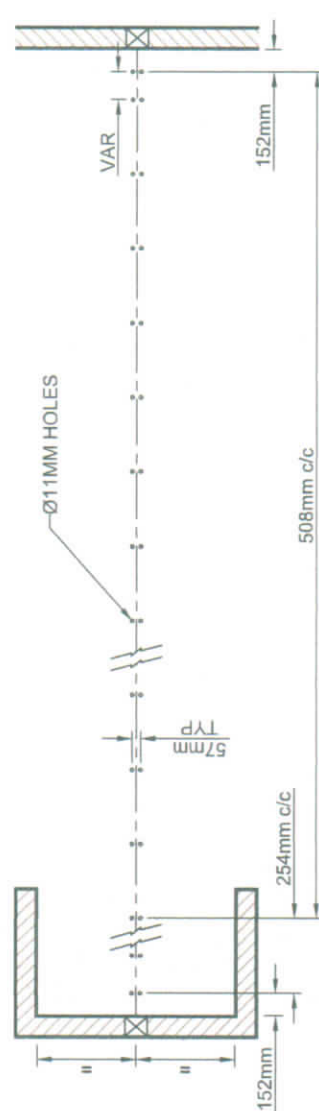
TRACK #38 DO NOT FASTEN TO TRACK

1/2" GYPSUM BOARD + STEEL SHEET
STANDARD FABRIC
ACOUSTICAL INSULATION

Steel Beam 200mm
Heepers 400mm
157mm MAX
20mm



PLAN VIEW
NOT TO SCALE



HANGER ROD LAYOUT
NOT TO SCALE

Note: CSA has reviewed this submission for pocket dimension only.

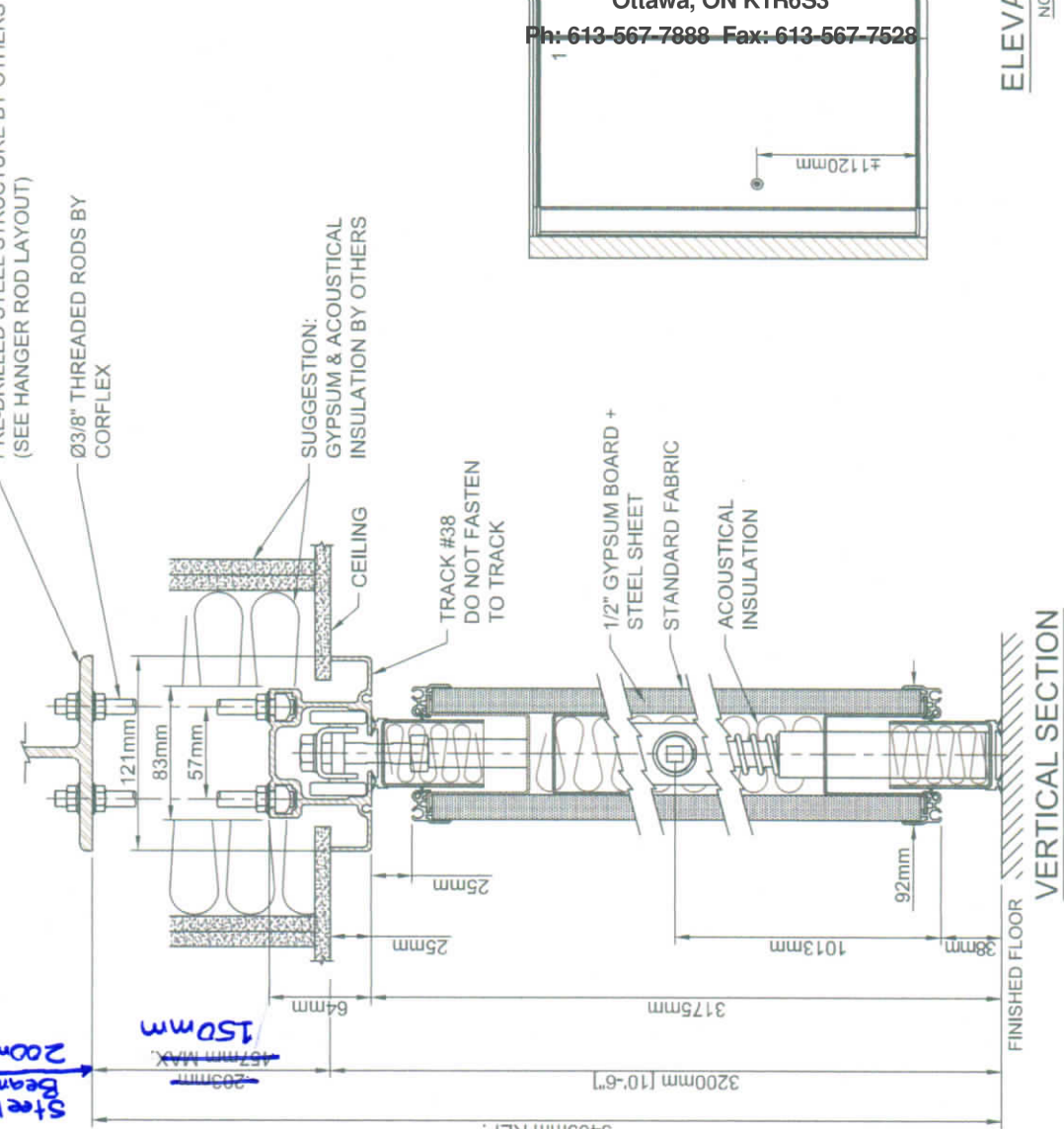
- NOT REVIEWED
- REVIEWED
- REVIEWED AS NOTED
- REVISE AND RE-SUBMIT



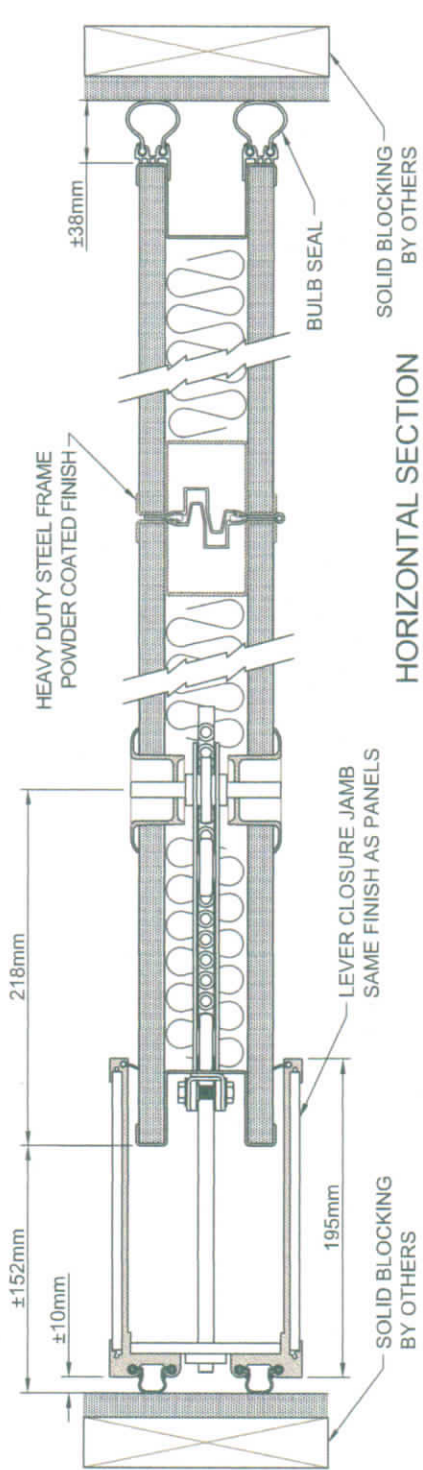
This review is for the sole purpose of ascertaining conformance with the general design concept of the contract documents. The Contractor shall retain all responsibility for the detailed design, fabrication or construction techniques, conformance with dimensions and job site conditions, and any errors or omissions in the shop drawings.

Date: Aug 22, 2017 By: JK

Christopher Simmonds Architect
The Annex, 45 Eccles Street
Ottawa, ON K1R6S3
Ph: 613-567-7888 Fax: 613-567-7528



VERTICAL SECTION
NOT TO SCALE



HORIZONTAL SECTION

| LOCATION | WEIGHT | PANEL FINISH |
|----------|-----------|-----------------|
| | ± 1835 kg | STANDARD FABRIC |

PANEL FACE COLOUR: -

TRIM COLOUR: WHITE GREY BLACK BEIGE

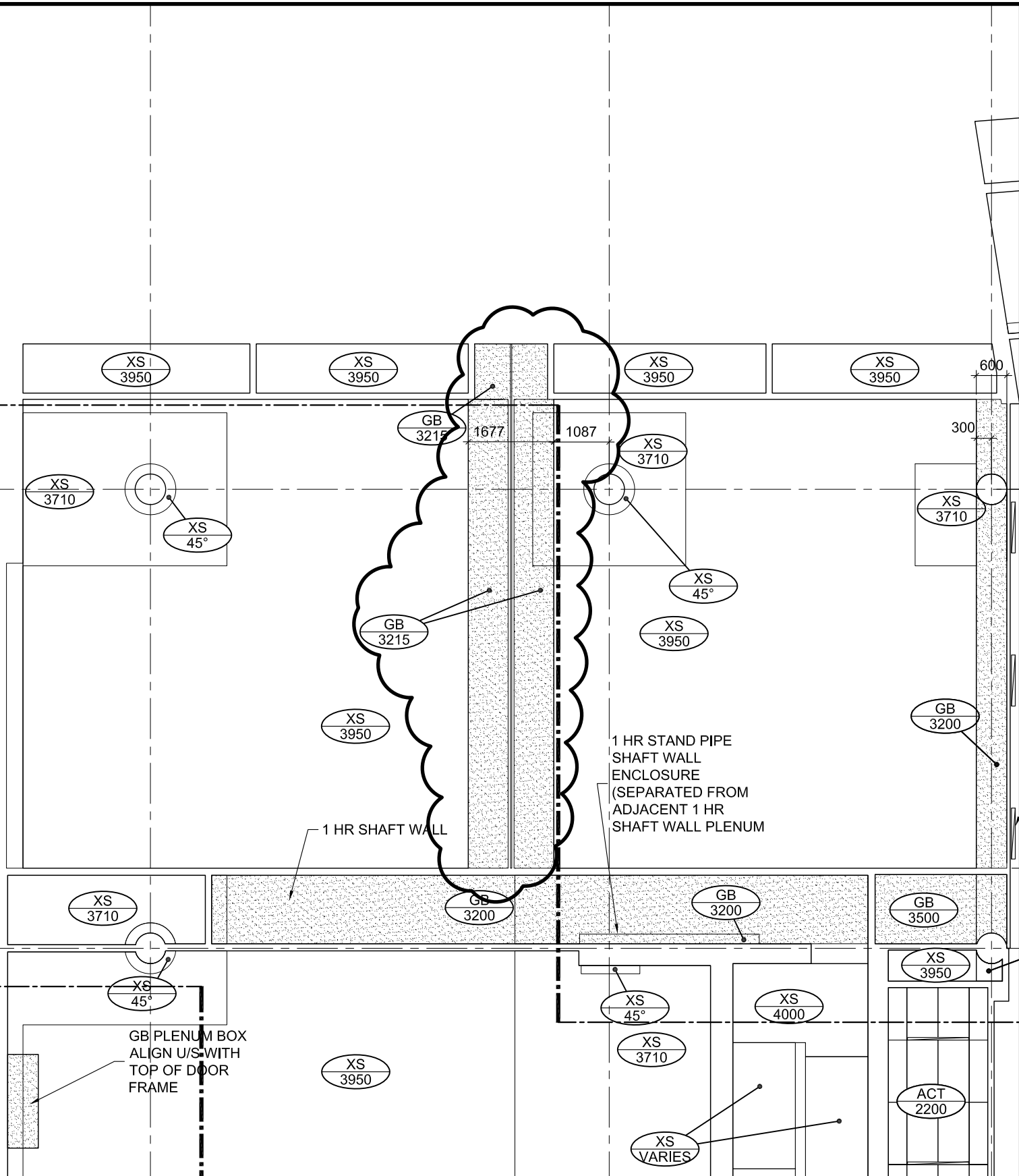
GASKET COLOUR: GREY BLACK BEIGE

GENERAL NOTES:

- SOLID BLOCKING IS REQUIRED AT JAMBS BY OTHERS.
- ANY STRUCTURAL DEFLECTION AND VARIATION OF THE FLOOR LEVELNESS SHOULD NOT EXCEED A COMBINED TOTAL OF 19mm.
- THERE MUST BE A CLEARANCE OF AT LEAST 750mm ON EACH SIDE OF CENTER LINE AT CEILING, WALLS AND FLOOR.
- CORFLEX IS NOT RESPONSIBLE FOR SOUND BARRIERS ABOVE THE CEILING.
- UNLESS OTHERWISE NOTED, OVERHEAD STRUCTURAL SUPPORTS TO BE SUPPLIED AND PRE-PUNCHED BY OTHERS.
- CORFLEX RECOMMENDS THAT ALL SUSPENSION ELEMENTS BE ACCESSIBLE FOR FUTURE ADJUSTMENTS.
- ALL DIMENSIONS ARE TO BE FIELD VERIFIED.

| | | | | |
|--|------------------|----------------------------|---------------------------|------------------|
| PROJECT: TOMLINSON BUILDING | ARCH/DESIGNER: | CONTRACTOR: TAL-CO LIMITED | DIST./AGENT: FRANK DUPÉRÉ | LOCATION: OTTAWA |
| Corflex | | | | |
| 10 Poissant Street Delson QC, J5B 2J1 Tel.: (450) 444-2422 Fax: (450) 444-2441 www.corflex.ca | | | | |
| Licensee of HUFOR Worldwide | | | | |
| DRAW. BY: AM | DATE: 2017-08-10 | REV. NO.: 1 | DRAWING NO.: | C17-11060-1 |
| | | | | 1/1 |

Rec'd: Aug 21, 2017.



Christopher Simmonds Architect

THE ANNEX / 45 ECCLES ST. OTTAWA ON K1R 6S3
 613.567.7888 PHONE / 613.567.7528 FAX
 csarchitect.com

ONTARIO ASSOCIATION OF ARCHITECTS

C. SIMMONDS
 LICENCE 4650

PROJECT:
TOMLINSON NEW BUILDING

DRAWING TITLE:
REFERENCE REV. CEILING PL. 1/A121

DATE: 07/21/2017

SCALE: 1:100

DRAWN BY: JK

JOB No: 574-15

DRAWING No: **ASK-163**