



TAL-CO SUPPLEMENTAL INSTRUCTION #58			
KITCHEN CORRIDOR HEIGHTS			
Project Name:	RW TOMLINSON - NEW HEAD OFFICE		
Project Location:	100 CitiGate Drive, Ottawa, Ontario		
ARCH. SI #:	N/A	Issued By:	Chris Simpson
STRUC. SI #:	N/A	Date Issued:	September 7, 2017
MECH. SI #:	SKM-46 & SKM-47	Revision #:	N/A
ELEC. SI #:	N/A	Revision Date:	N/A

Supplemental Instructions are issued by the Construction Manager to record a clarification or revision to the previously issued Contract Documentation as reflected by the attached information prepared by the identified Professionals.

The Construction Manager shall review the Supplemental Instruction and the attached information and issue to the affected Trade Contractors identifying the following course of action by the Trade Contractor.

Notify TAL-CO within 5 days of receipt, if the attached documents will require a change to Contract Price or Schedule.

Title: KITCHEN CORRIDOR HEIGHTS

Reference:

- Architectural Construction Update 28-Jul-2017
- Mechanical Drawing Re-Issued for Construction 16-Feb-2017

Attachments:

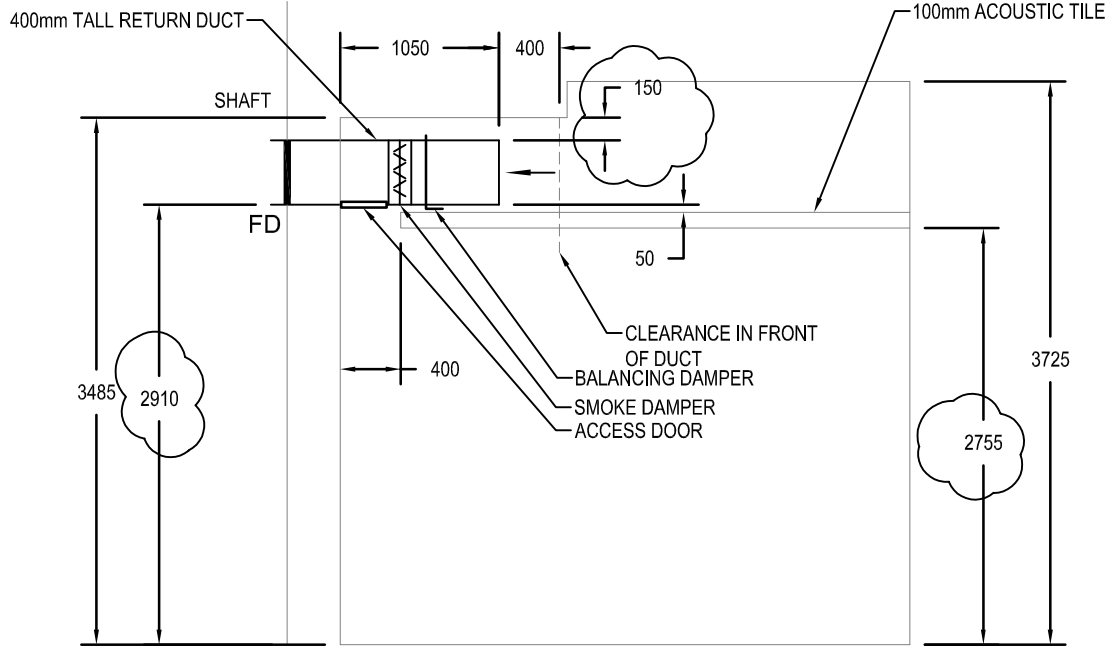
- SKM-46-R2
- SKM-47-R1
- Sketch - Kitchen Corridors

Description of the Work:

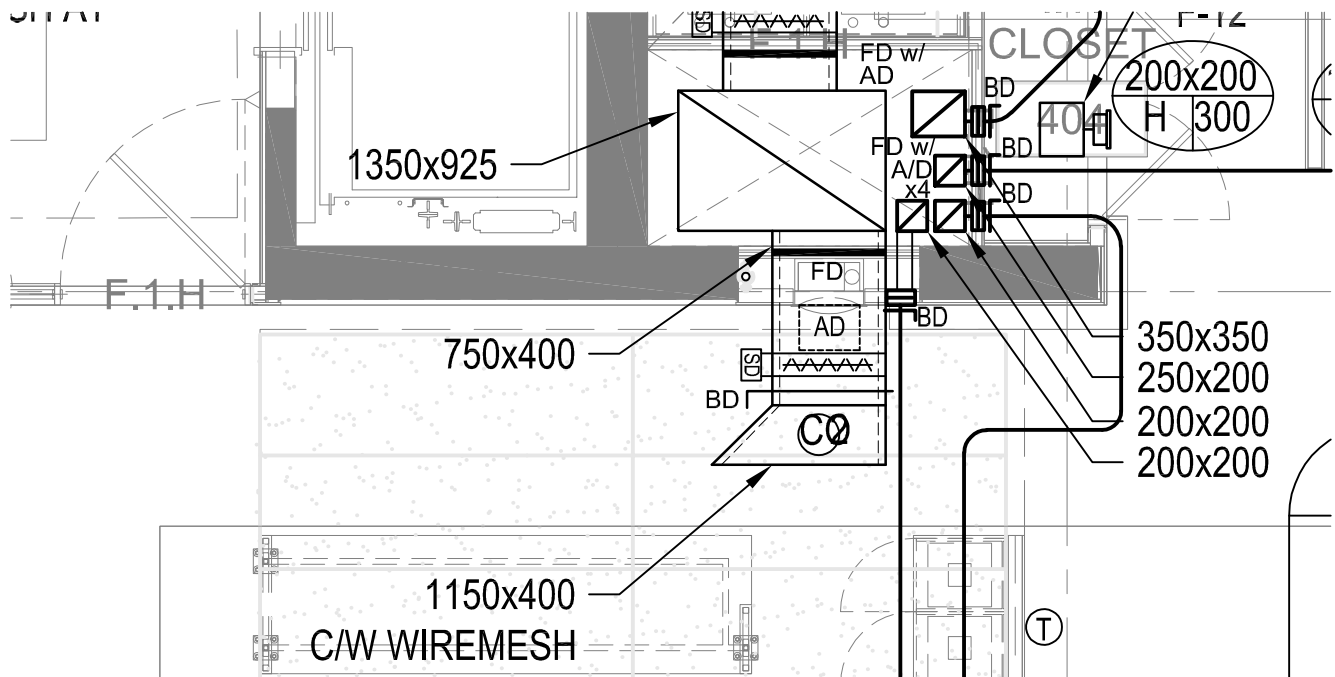
Ceiling Height lowered at Kitchen Corridors on Floors 2, 3 and 4.


Reason:

Ceiling height lowered for HVAC ducts; for fire damper installation in the return ducts, as per code requirements.



5 SECTION - COORIDOR AT KITCHEN 403
M124 1:50



project TOMLINSON NEW BUILDING CITIGATE, OTTAWA	Designed By C.L.M. Date 2017/05/19	 Optimum Mechanical Solutions Inc. 84 Bentley Avenue Ottawa, Ontario, K2E 6T9 Tel: 613-228-9500 Fax: 613-228-9218 www.optimummech.com
	Drawn By C.L.M. Date 2017/05/19	
title FLOOR 4 KITCHENETTE SECTION COORDINATION	Reviewed By T.N. Date 2017/05/19	Project no. 15-1570
	Scale 1 : 100	Sketch no. SKM-47-R1

