

Notes:

1. THE COPYRIGHT OF THIS DRAWING IS VESTED IN NOOGA CONSULTING INC. AND IT MAY NOT BE REPRODUCED IN WHOLE OR PART OR USED FOR THE MANUFACTURE OF ANY ARTICLE WITHOUT THE EXPRESS PERMISSION OF THE COPYRIGHT HOLDERS.
2. WORK TO FIGURED DIMENSIONS ONLY.
3. THIS DRAWING IS TO BE READ IN CONJUNCTION WITH ALL RELEVANT ARCHITECTS, SERVICE ENGINEER'S AND NOOGA CONSULTING DRAWINGS AND SPECIFICATIONS.

2	DESIGN MODIFICATIONS	RB	8/31/16
1	TENDER	RB	8/21/16
REV:	DESCRIPTION:	BY:	DATE:
STATUS: FOR CONSTRUCTION			

NOOGA CONSULTING INC.
 671 Norwood Rd.
 RR#1 Salmon River
 Hectanooga, Nova Scotia
 514.984.2376
www.noogaconsulting.com

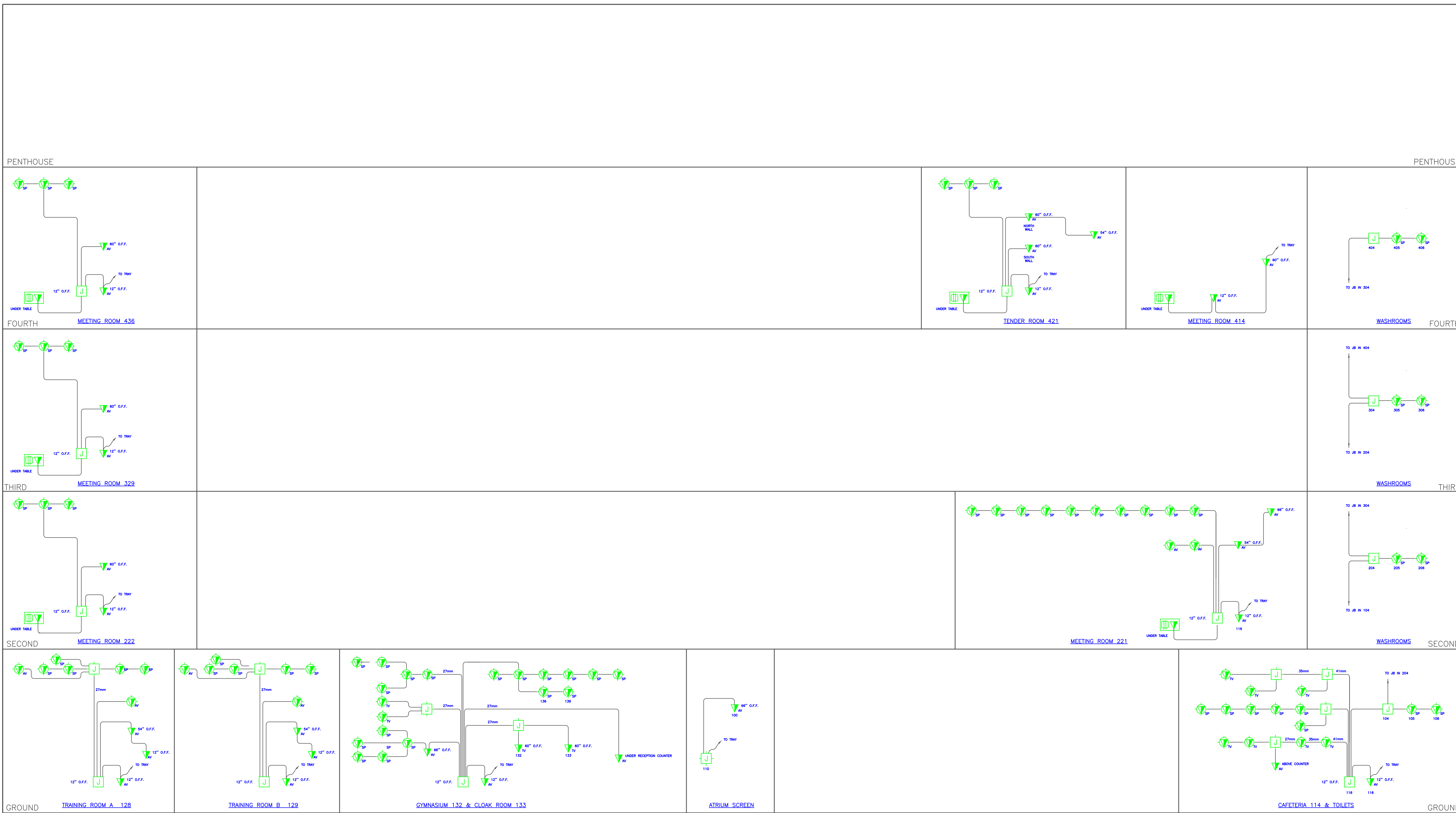
CLIENT: **R.W Tomlinson Limited**

ARCHITECT: **CHRISTOPHER SIMMONDS**
 THE ANNEX / 45 ECCLES ST.
 OTTAWA, ONT.

SITE: **NEW OFFICE BUILDING**
 OTTAWA, ONT.

TITLE: **A/V CONDUIT RISER DIAGRAMS**

SCALE AT A1:	DATE:	DRAWN:	CHECKED:
NTS	8/31/16	RB	GF
PROJECT NO:	DRAWING NO:	REVISION:	
25567	AV 000C	2	



NORTH

SOUTH

NOTES:

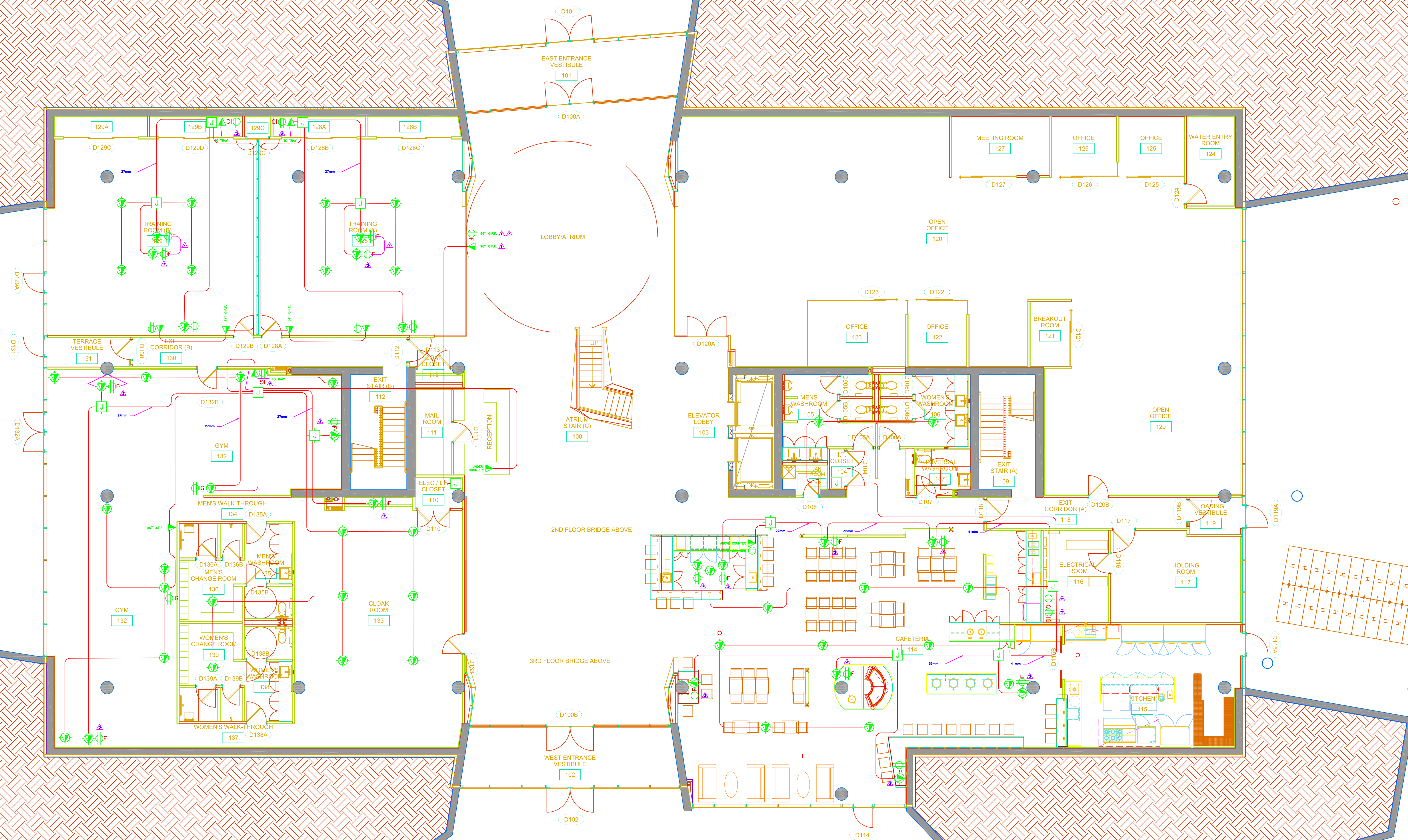
- WALL MOUNTED JUNCTION BOX
- CEILING MOUNTED JUNCTION BOX
- ONE CEILING MOUNT BACKBOX C/W ONE 3/4" CONDUIT STUBBED INTO CEILING SPACE UNLESS SHOWN OTHERWISE. C/W TWO CONNECTORS WITH HELIX BUSHINGS AND PULL STRINGS FOR USE BY COMMUNICATIONS CONTRACTOR.
- ONE WALL MOUNT BACKBOX C/W ONE 3/4" CONDUIT STUBBED INTO CEILING SPACE UNLESS SHOWN OTHERWISE. C/W TWO CONNECTORS WITH HELIX BUSHINGS AND PULL STRINGS FOR USE BY COMMUNICATIONS CONTRACTOR.
- FLOOR BOX C/W CSA 5-15R AND OPENING FOR USE BY COMMUNICATIONS CONTRACTOR

— ALL CONDUIT 21MM UNLESS NOTED OTHERWISE.
 — JUNCTION BOXES TO BE SIZED ACCORDING TO CONDUIT COUNT & DIA.
 — ALL CONDUIT ENTERING WALL MOUNT JUNCTION BOXES WILL ENTER FROM THE TOP, UNLESS IT'S SLAB CONDUIT, IN WHICH CASE IT WILL ENTER FROM THE BOTTOM.



Notes:

1. THE COPYRIGHT OF THIS DRAWING IS VESTED IN NOOGA CONSULTING INC. AND IT MAY NOT BE REPRODUCED IN WHOLE OR PART OR USED FOR THE MANUFACTURE OF ANY ARTICLE WITHOUT THE EXPRESS PERMISSION OF THE COPYRIGHT HOLDERS.
2. WORK TO FIGURED DIMENSIONS ONLY.
3. THIS DRAWING IS TO BE READ IN CONJUNCTION WITH ALL RELEVANT ARCHITECT'S, SERVICE ENGINEER'S AND NOOGA CONSULTING DRAWINGS AND SPECIFICATIONS.



- NOTES:**
- ▲ OUTLETS TO BE INSTALLED ON HAMILTON 11113 BOX. COORDINATE WITH 40' FOR 1" PLUMBING BACKING 24" HIGH CENTERED ON BOXED WORKING HEIGHT.
 - ▲ ISOLATED SMOKING OUTLET TO BE ON SEPARATE CIRCUIT.
 - ▲ FILTERED OUTLET TO BE HUBBELL 50000A.
 - ▲ OUTLETS TO BE ON SAME CIRCUIT.
 - ▲ ONE CEILING MOUNT BACKBOX 6/4" ONE 3/4" CONDUIT STUBBED INTO CEILING SPACE. CEILING CONNECTOR WITH STRAIN BUSHING AND DIAL STRING FOR USE BY COMMUNICATIONS CONTRACTOR. ONE CONDUIT PER BOX.
 - ▲ CEILING MOUNTED SURFACE RECEPTACLE 120 VOLT, 15 AMP, CSA 5-15R. SEE NOTES ABOVE WHEN APPLICABLE.
 - ▲ ONE WALL MOUNT BACKBOX 6/4" ONE 3/4" CONDUIT STUBBED INTO CEILING SPACE. CEILING CONNECTOR WITH STRAIN BUSHING AND DIAL STRING FOR USE BY COMMUNICATIONS CONTRACTOR. ONE CONDUIT PER BOX.
 - ▲ WALL MOUNTED SURFACE RECEPTACLE 120 VOLT, 15 AMP, CSA 5-15R. SEE NOTES ABOVE WHEN APPLICABLE.
 - ▲ FLOOR BOX 6/4" CSA 5-15R AND SPACING FOR USE BY COMMUNICATIONS CONTRACTOR.
- ALL CONDUIT 21MM UNLESS NOTED OTHERWISE.
 - JUNCTION BOXES TO BE SIZED ACCORDING TO CONDUIT COUNT & SIZE.
 - ALL CONDUIT ENTERING WALL MOUNT JUNCTION BOXES WILL ENTER FROM THE TOP, UNLESS ITS FLAT CONDUIT, IN WHICH CASE IT WILL ENTER FROM THE BOTTOM.

2	MODIFICATIONS	RB	8/31/16
1	TENDER	RB	8/23/16
REV:	DESCRIPTION:	BY:	DATE:
STATUS: FOR CONSTRUCTION			

NOOGA CONSULTING INC.
 671 Norwood Rd.
 RR#1 Salmon River
 Hectanooga, Nova Scotia
 514.984.2376
www.noogaconsulting.com

CLIENT: **R.W Tomlinson Limited**

ARCHITECT: **CHRISTOPHER SIMMONDS**
 THE ANNEX / 45 ECCLES ST.
 OTTAWA, ONT.

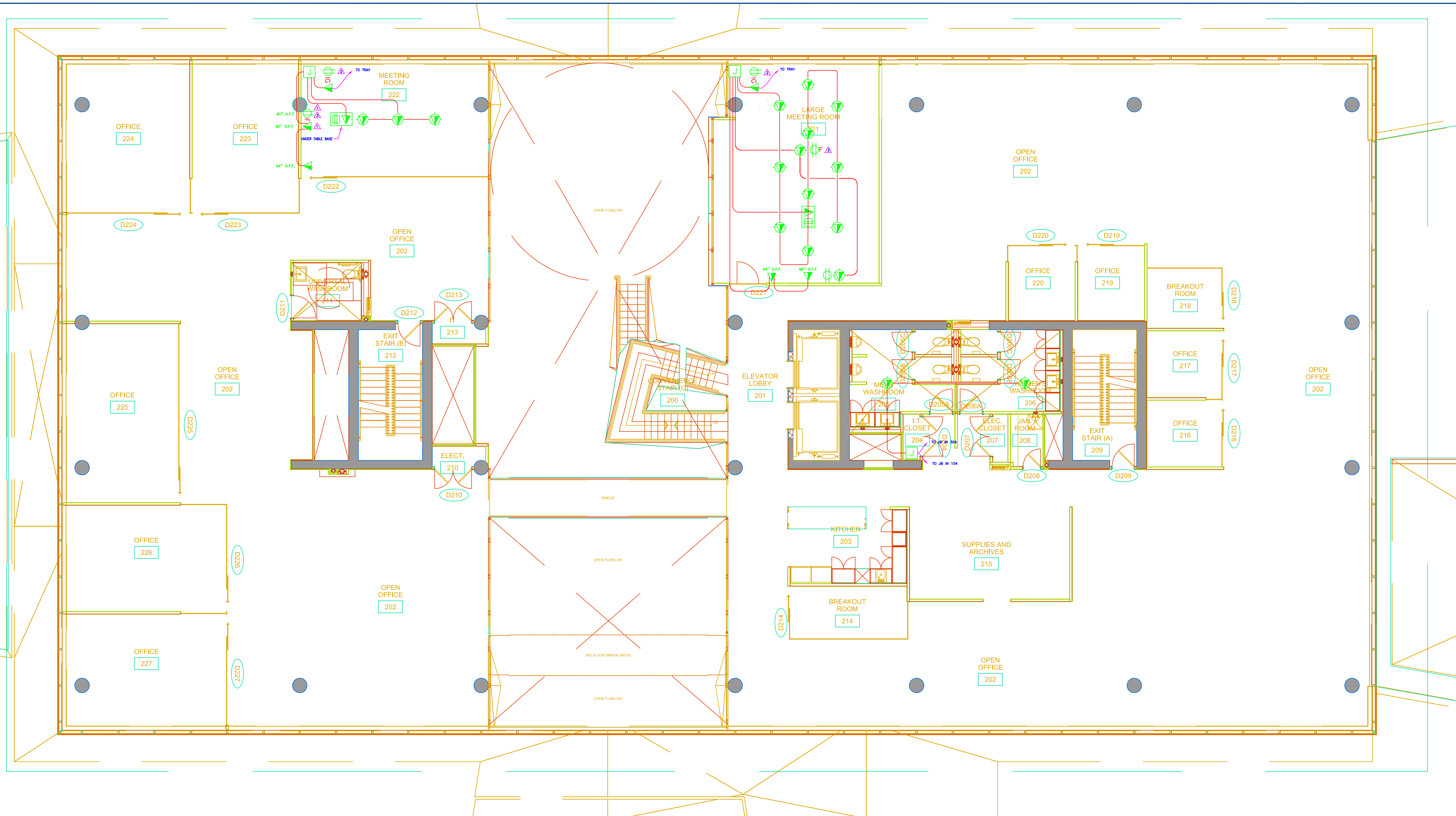
SITE: **NEW OFFICE BUILDING**
OTTAWA, ONT.

TITLE: **A/V GROUND FLOOR**

SCALE AT A1:	DATE:	DRAWN:	CHECKED:
NTS	8/18/16	RB	GF
PROJECT NO:	DRAWING NO:	REVISION:	
25567	AV 003C	2	

Notes:

1. THE COPYRIGHT OF THIS DRAWING IS VESTED IN NOOGA CONSULTING INC. AND IT MAY NOT BE REPRODUCED IN WHOLE OR PART OR USED FOR THE MANUFACTURE OF ANY ARTICLE WITHOUT THE EXPRESS PERMISSION OF THE COPYRIGHT HOLDERS.
2. WORK TO FIGURED DIMENSIONS ONLY.
3. THIS DRAWING IS TO BE READ IN CONJUNCTION WITH ALL RELEVANT ARCHITECT'S, SERVICE ENGINEER'S AND NOOGA CONSULTING DRAWINGS AND SPECIFICATIONS.



- NOTES -**
- ▲ OUTLETS TO BE INSTALLED ON ARLINGTON TMB13 BOX. COORDINATE WITH 'G' FOR 8" FLYWOOD BRACING. 24" HIGH CENTERED ON INDICATED MOUNTING HEIGHT. SPANNING 3 STRESS CHAIRS.
 - ▲ ISOLATED GROUND OUTLET, TO BE ON INDIVIDUAL CIRCUIT.
 - ▲ FILTERED OUTLET, TO BE HARBELL 52805A.
 - ▲ ONE CEILING MOUNT BACKBOX C/W ONE 3/4" CONDUIT STUBBED INTO CEILING SPACE C/W TWO CONDUCTORS WITH TIE-ROPS AND PULL STRINGS FOR USE BY COMMUNICATIONS CONTRACTOR. ONE CONDUIT PER BOX.
 - ▲ CEILING MOUNTED DUPLEX RECEPTACLE 120 VOLT, 15 AMP, CSA 5-15R. SEE NOTE ABOVE WHEN APPLICABLE.
 - ▲ ONE WALL MOUNT BACKBOX C/W ONE 3/4" CONDUIT STUBBED INTO CEILING SPACE C/W TWO CONDUCTORS WITH TIE-ROPS AND PULL STRINGS FOR USE BY COMMUNICATIONS CONTRACTOR. ONE CONDUIT PER BOX.
 - ▲ WALL MOUNTED DUPLEX RECEPTACLE 120 VOLT, 15 AMP, CSA 5-15R. SEE NOTES ABOVE WHEN APPLICABLE.
 - ▲ FLOOR BOX C/W CSA 5-15R AND OPENING FOR USE BY COMMUNICATION CONTRACTOR.
- ALL CONDUIT 21MM UNLESS NOTED OTHERWISE.
 - JUNCTION BOXES TO BE SIZED ACCORDING TO CONDUIT COUNT & DMS.
 - ALL CONDUIT ENTERING WALL MOUNT JUNCTION BOXES WILL ENTER FROM THE TOP, UNLESS IT'S SLAB CONDUIT, IN WHICH CASE IT WILL ENTER FROM THE BOTTOM.

2	MODIFICATIONS	RB	8/31/16
1	TENDER	RB	8/23/16
REV:	DESCRIPTION:	BY:	DATE:
STATUS: FOR CONSTRUCTION			

NOOGA CONSULTING INC.
 671 Norwood Rd.
 RR#1 Salmon River
 Hectanooga, Nova Scotia
 514.984.2376
www.noogaconsulting.com

CLIENT: **R.W Tomlinson Limited**

ARCHITECT: **CHRISTOPHER SIMMONDS**
 THE ANNEX / 45 ECCLES ST.
 OTTAWA, ONT.

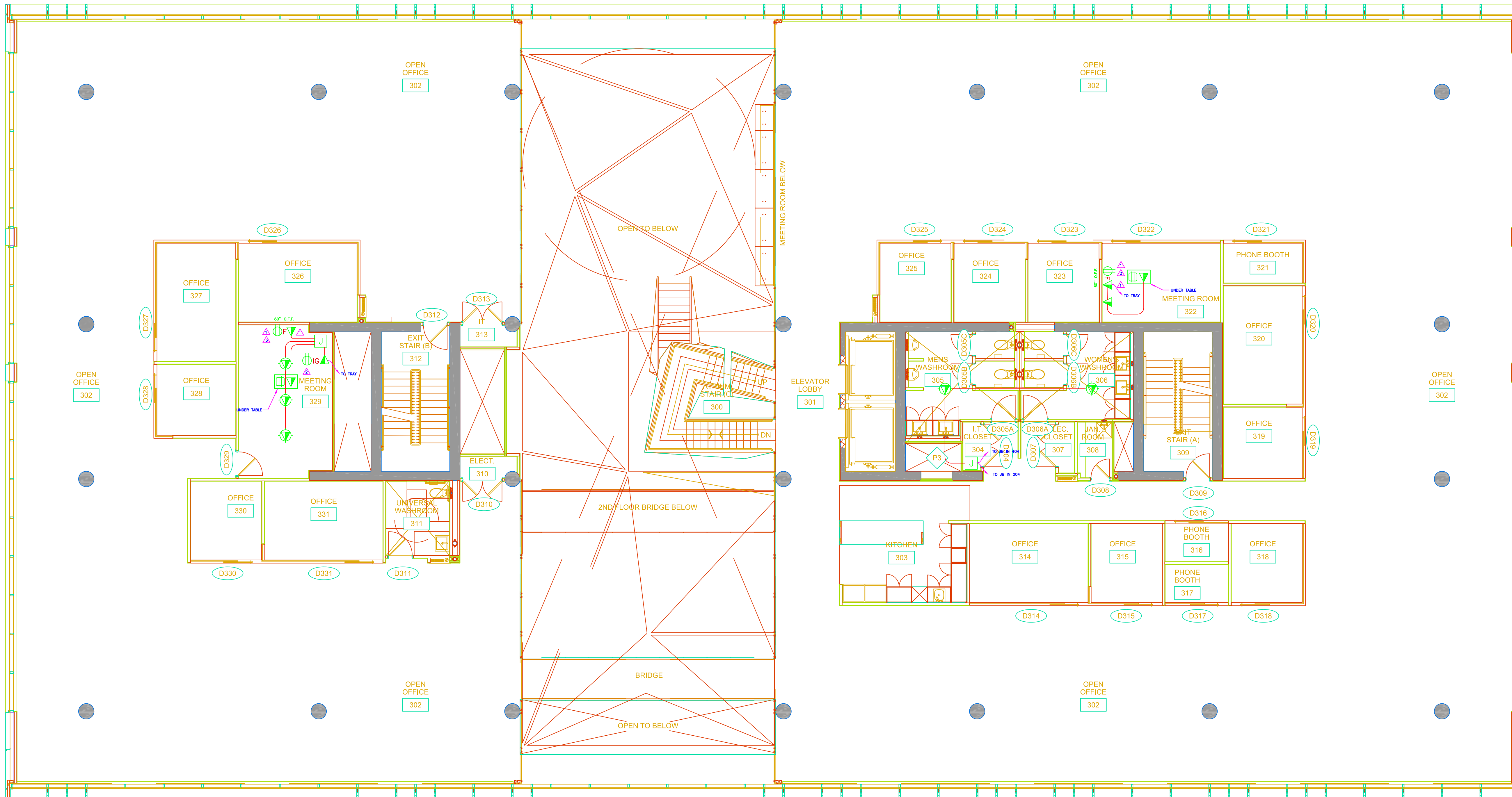
SITE: **NEW OFFICE BUILDING**
OTTAWA, ONT.

TITLE: **A/V SECOND FLOOR**

SCALE AT A1:	DATE:	DRAWN:	CHECKED:
NTS	8/18/16	RB	GF
PROJECT NO:	DRAWING NO:	REVISION:	
25567	AV 005C	2	

Notes:

1. THE COPYRIGHT OF THIS DRAWING IS VESTED IN NOOGA CONSULTING INC. AND IT MAY NOT BE REPRODUCED IN WHOLE OR PART OR USED FOR THE MANUFACTURE OF ANY ARTICLE WITHOUT THE EXPRESS PERMISSION OF THE COPYRIGHT HOLDERS.
2. WORK TO FIGURED DIMENSIONS ONLY.
3. THIS DRAWING IS TO BE READ IN CONJUNCTION WITH ALL RELEVANT ARCHITECT'S, SERVICE ENGINEER'S AND NOOGA CONSULTING DRAWINGS AND SPECIFICATIONS.



NOTES:

- ▲ OUTLETS TO BE INSTALLED ON ARLINGTON 1M713 BOX. COORDINATE WITH GC FOR 8" PLUMBING BACKING 24" HIGH CENTERED ON INDICATED MOUNTING HEIGHT. SPACING 3 STUDS CENTER.
- ▲ ISOLATED GROUND OUTLET, TO BE ON INDIVIDUAL CIRCUIT.
- ▲ FILTERED OUTLET, TO BE HUBBELL 52805A.
- ▲ ONE CEILING MOUNT BACKBOX C/W ONE 3/4" CONDUIT STUBBED INTO CEILING SPACE C/W TWO CONNECTORS WITH NYLON BUSHINGS AND PULL STRINGS FOR USE BY COMMUNICATIONS CONTRACTOR. ONE CONDUIT PER BOX.
- ▲ CEILING MOUNTED DUPLEX RECEPTACLE 120 VOLT, 15 AMP, CSA 5-15R. SEE NOTES ABOVE WHEN APPLICABLE.
- ▲ ONE WALL MOUNT BACKBOX C/W ONE 3/4" CONDUIT STUBBED INTO CEILING SPACE C/W TWO CONNECTORS WITH NYLON BUSHINGS AND PULL STRINGS FOR USE BY COMMUNICATIONS CONTRACTOR. ONE CONDUIT PER BOX.
- ▲ WALL MOUNTED DUPLEX RECEPTACLE 120 VOLT, 15 AMP, CSA 5-15R. SEE NOTES ABOVE WHEN APPLICABLE.
- ▲ FLOOR BOX C/W CSA 5-15R AND OPENING FOR USE BY COMMUNICATION CONTRACTOR

- ALL CONDUIT 21MM UNLESS NOTED OTHERWISE.
- JUNCTION BOXES TO BE SIZED ACCORDING TO CONDUIT COUNT & DIMS.
- ALL CONDUIT ENTERING WALL MOUNT JUNCTION BOXES WILL ENTER FROM THE TOP, UNLESS IT'S SLAB CONDUIT, IN WHICH CASE IT WILL ENTER FROM THE BOTTOM.

2	MODIFICATIONS	RB	8/31/16
1	TENDER	RB	8/23/16
REV:	DESCRIPTION:	BY:	DATE:
STATUS: FOR CONSTRUCTION			

NOOGA CONSULTING INC.
 671 Norwood Rd.
 RR#1 Salmon River
 Hectanooga, Nova Scotia
 514.984.2376
www.noogaconsulting.com

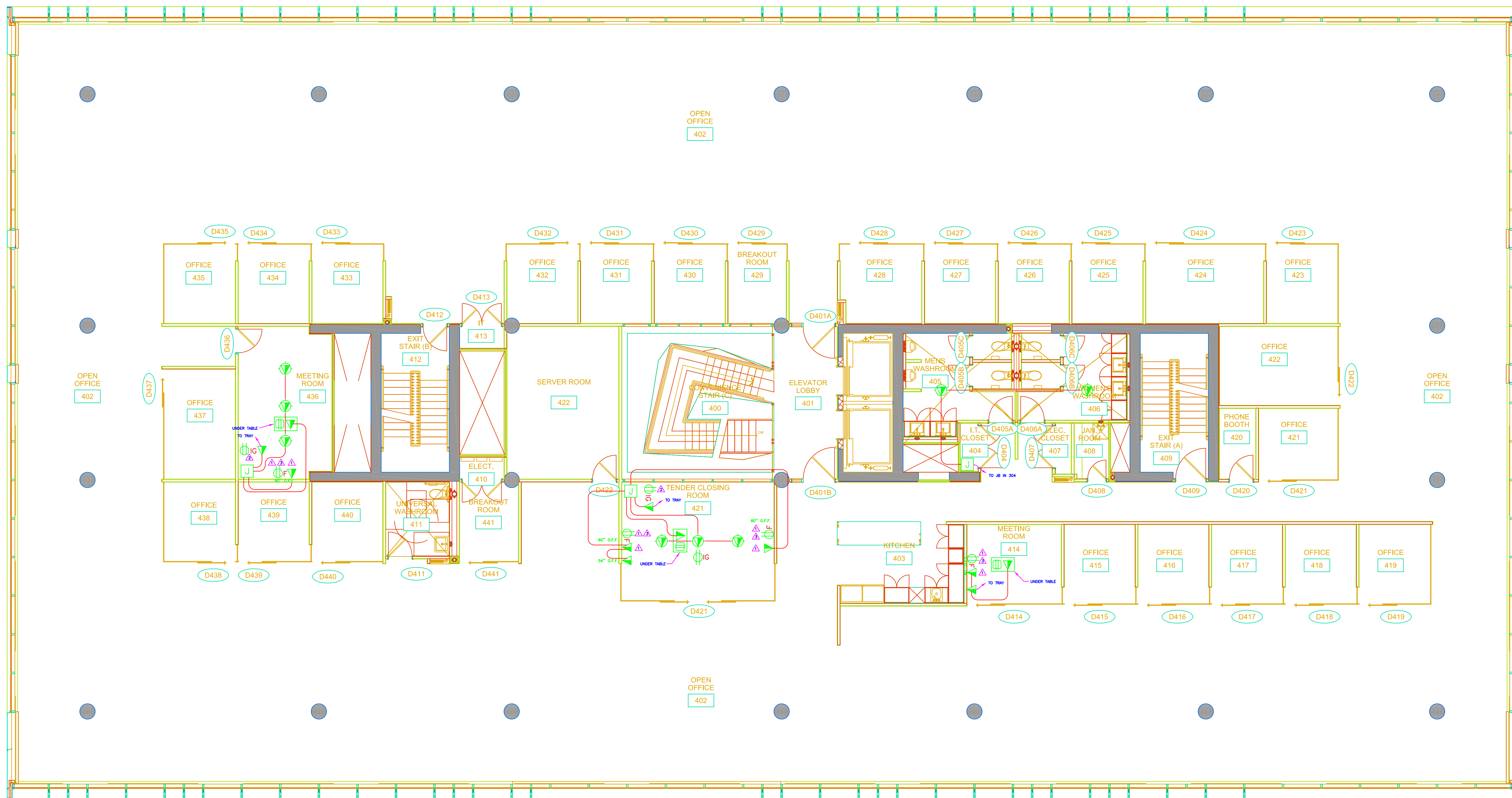
CLIENT: **R.W Tomlinson Limited**

ARCHITECT: **CHRISTOPHER SIMMONDS**
 THE ANNEX / 45 ECCLES ST.
 OTTAWA, ONT.

SITE: **NEW OFFICE BUILDING**
OTTAWA, ONT.

TITLE: **A/V THIRD FLOOR**

SCALE AT A1:	DATE:	DRAWN:	CHECKED:
NTS	8/18/16	RB	GF
PROJECT NO:	DRAWING NO:	REVISION:	
25567	AV 006C	2	



- NOTES:**
- ▲ OUTLETS TO BE INSTALLED ON ARLINGTON T8713 BOX. COORDINATE WITH 60" F.O.B. PLYWOOD BACKING 24" HIGH LOCATED ON BRACKET. MOUNTING HEIGHT: SPACING 3' SLUGS SPACED.
 - ▲ ISOLATED GROUND OUTLET, TO BE ON INDIVIDUAL CIRCUIT.
 - ▲ FILTERED OUTLET, TO BE HUBBELL S2020A.
 - ▲ ONE CEILING MOUNT BACKBOX C/W ONE 3/4" CONDUIT STUBBED INTO CEILING SPACE C/W TWO CONNECTORS WITH W/LOE BEZELS AND PULL STRINGS FOR USE BY COMMUNICATIONS CONTRACTOR. ONE CONDUIT PER BOX.
 - ▲ CEILING MOUNTED DUPLEX RECEPTACLE 120 VOLT, 15 AMP, CSA 5-15R. SEE NOTES ABOVE WHEN APPLICABLE.
 - ▲ ONE WALL MOUNT BACKBOX C/W ONE 3/4" CONDUIT STUBBED INTO CEILING SPACE C/W TWO CONNECTORS WITH W/LOE BEZELS AND PULL STRINGS FOR USE BY COMMUNICATIONS CONTRACTOR. ONE CONDUIT PER BOX.
 - ▲ WALL MOUNTED DUPLEX RECEPTACLE 120 VOLT, 15 AMP, CSA 5-15R. SEE NOTES ABOVE WHEN APPLICABLE.
 - ▲ FLOOR BOX C/W CSA 5-15R AND OPENING FOR USE BY COMMUNICATION CONTRACTOR.
- ALL CONDUIT 21MM UNLESS NOTED OTHERWISE.
 - JUNCTION BOXES TO BE SIZED ACCORDING TO CONDUIT COUNT & DWS.
 - ALL CONDUIT ENTERING WALL MOUNT JUNCTION BOXES WILL ENTER FROM THE TOP, UNLESS IT'S SLAB CONDUIT, IN WHICH CASE IT WILL ENTER FROM THE BOTTOM.

Notes:

1. THE COPYRIGHT OF THIS DRAWING IS VESTED IN NOOGA CONSULTING INC. AND IT MAY NOT BE REPRODUCED IN WHOLE OR PART OR USED FOR THE MANUFACTURE OF ANY ARTICLE WITHOUT THE EXPRESS PERMISSION OF THE COPYRIGHT HOLDERS.
2. WORK TO FIGURED DIMENSIONS ONLY.
3. THIS DRAWING IS TO BE READ IN CONJUNCTION WITH ALL RELEVANT ARCHITECT'S, SERVICE ENGINEER'S AND NOOGA CONSULTING DRAWINGS AND SPECIFICATIONS.

1	MODIFICATIONS	RB	8/31/16
1	TENDER	RB	8/23/16
REV:	DESCRIPTION:	BY:	DATE:
STATUS: FOR CONSTRUCTION			

NOOGA CONSULTING INC.

 671 Norwood Rd.
 RR#1 Salmon River
 Hectanooga, Nova Scotia
 514.984.2376
www.noogaconsulting.com

CLIENT: **R.W Tomlinson Limited**

ARCHITECT: **CHRISTOPHER SIMMONDS**
 THE ANNEX / 45 ECCLES ST.
 OTTAWA, ONT.

SITE: **NEW OFFICE BUILDING**
OTTAWA, ONT.

TITLE: **A/V FOURTH FLOOR**

SCALE AT A1:	DATE:	DRAWN:	CHECKED:
NTS	8/18/16	RB	GF
PROJECT NO:	DRAWING NO:	REVISION:	
25567	AV 007C	2	