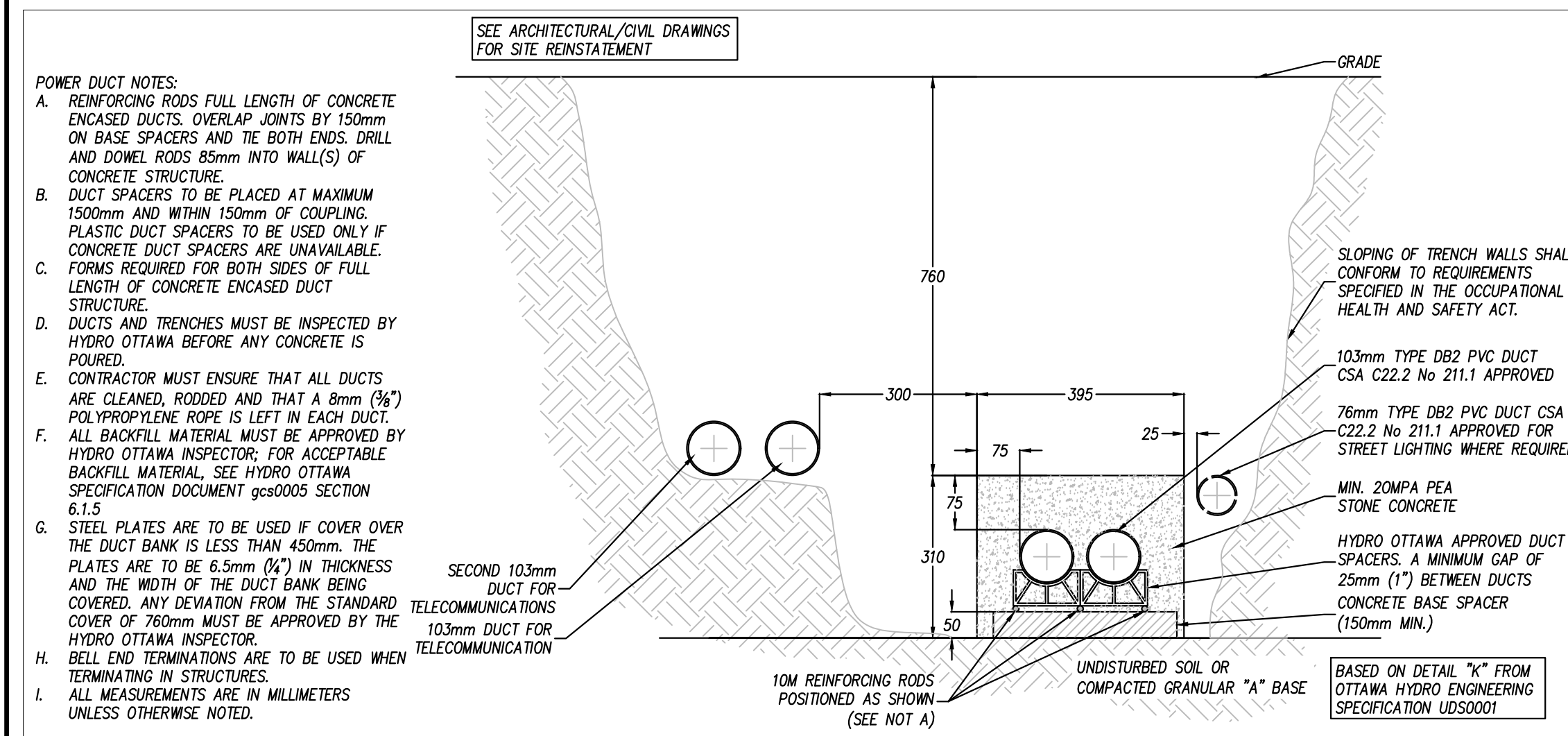


CONSTRUCTION DATA TABLE					
WORK LOCATION #	NOMENCLATURE ID#	TABLE OF UG OR OH STRUCTURE OR DEVICE	CIVIL STANDARDS	ELECTRICAL STANDARDS	INSTRUCTIONS
L1	X283708HH S27895	POLE LATERAL	UDS0023	OGS0001	CIVIL UDS0023 - DETAIL B + E NEW GROUND ROD TO BE INSTALLED (IF REQUIRED)
L2		1H X 2W CONCRETE ENCASED DUCT STRUCTURE	UDS0001 UDS0032 UDC0032		CIVIL UDS0001 - DETAIL K 1.5m LARGE RADIUS BEND ELECTRICAL INSTALL 1/0 AL 15kV CABLE FROM S27895 TO TP11968
L3		1H X 2W DIRECT BURIED DUCT STRUCTURE			CIVIL DIRECT BURIED DUCT STRUCTURE TO BE ABANDONED ELECTRICAL EXISTING PRIMARY CABLE TO BE REMOVED

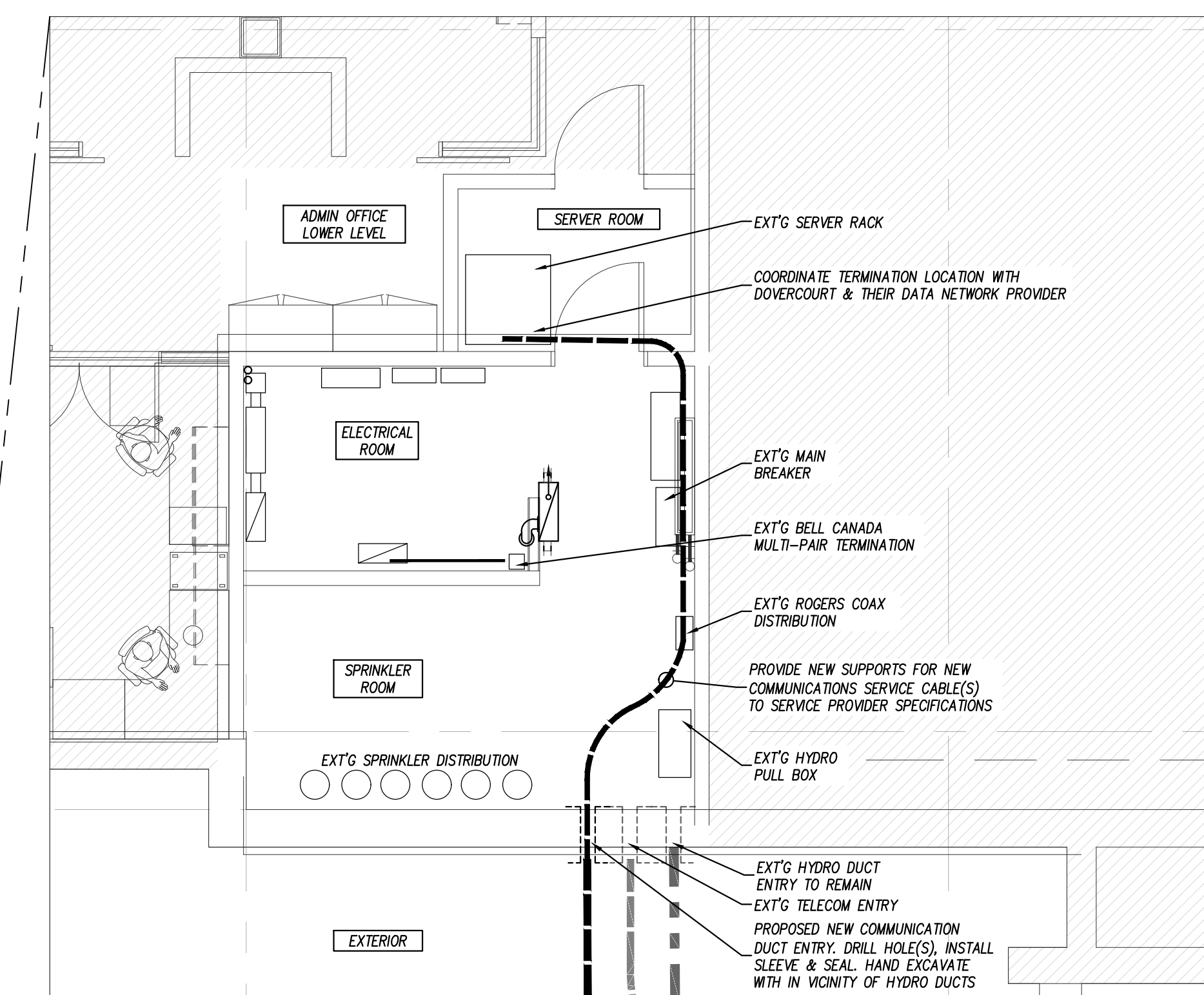
- NOTES:
- Hydro Ottawa will hire an approved contractor to complete all civil work within 2.0m of energized equipment.
  - Reinstatement completed by owner's (project) contractor.
  - Hydro Ottawa will be responsible for the concrete pole lateral and 2.0m of concrete encased duct structure around the existing pole.
  - Hydro Ottawa Qualified Contractor to complete the scope of civil work from existing duct structure located 2.0m from transformer to within 2.0m of the existing service pole.
  - All duct structure work, including backfill to be carried out by Hydro Ottawa approved contractor.
  - Open main secondary service breaker during hydro Ottawa primary connection at transformer.
  - This work was completed by Hydro Ottawa.

INFORMATION PROVIDED BY HYDRO OTTAWA

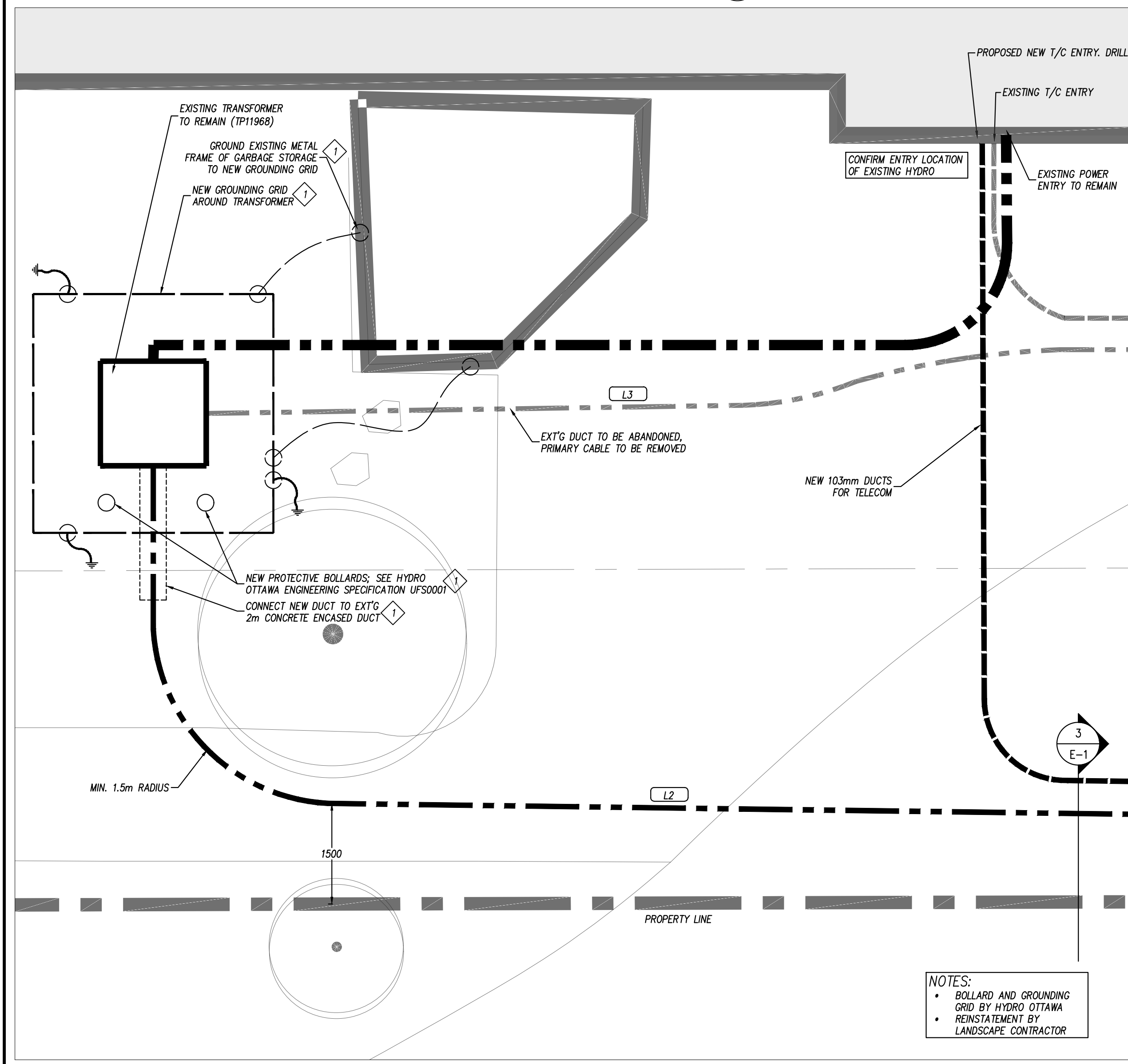


3 POWER DUCT SECTION DETAIL 1:10

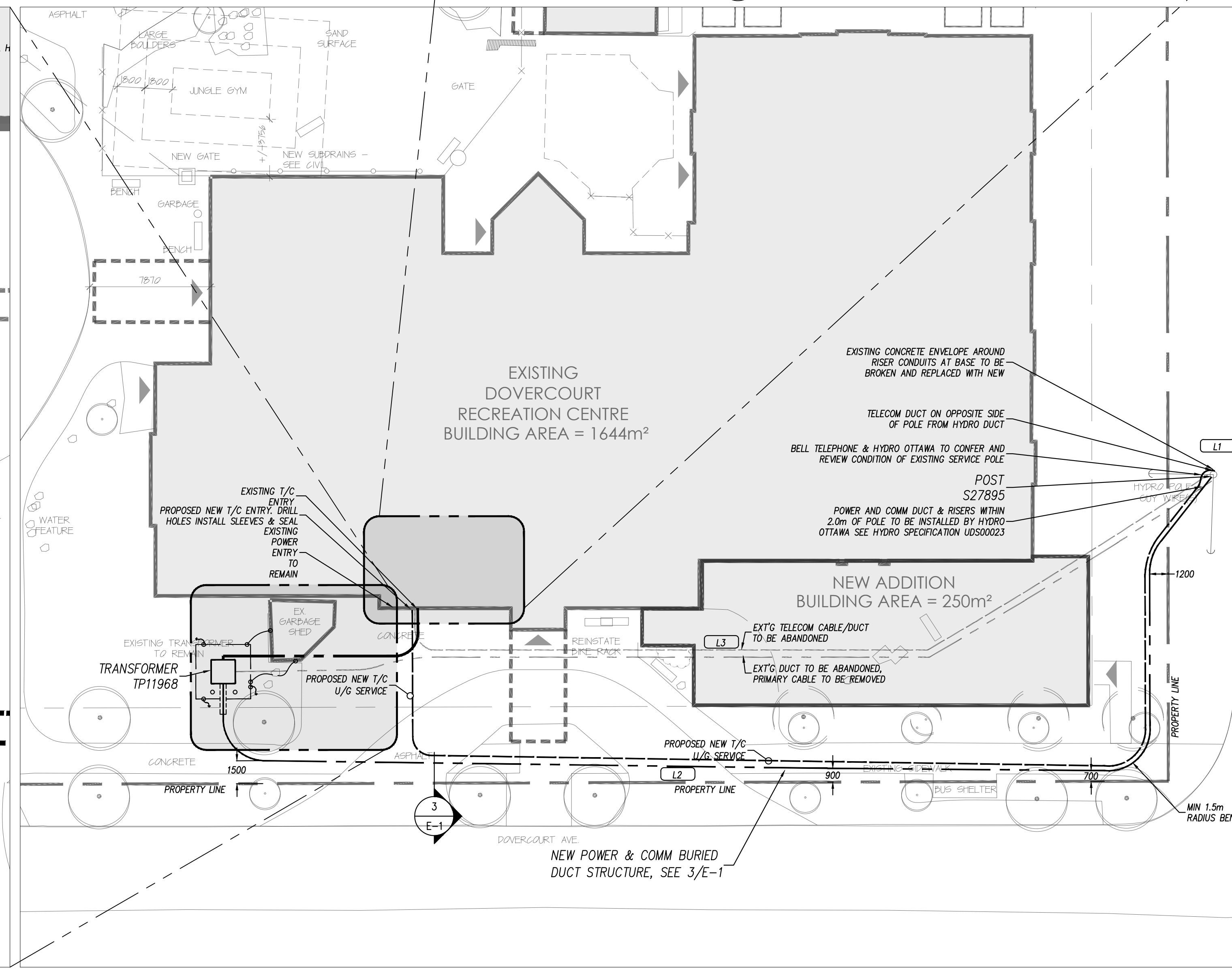
- GENERAL NOTES
- All construction shall be completed using approved Hydro Ottawa construction standards (latest edition) and/or details specified in the project drawing(s).
  - External workforces may obtain the latest edition of applicable Hydro Ottawa standards and/or design specifications at [www.hydroottawa.com](http://www.hydroottawa.com).
  - Prior to undertaking work within the safe limits of approach to Hydro Ottawa overhead plant (as defined in the Occupational Health and Safety Act), contact the designated Hydro Ottawa project manager or Hydro Ottawa Service Desk at 613-738-6400, Option 4.
  - Obtain utility locates prior to commencement of any excavation.
  - Where excavation within 1.5 metres of Hydro Ottawa underground plant, contact the designated Hydro Ottawa project manager or Hydro Ottawa Service Desk at 613-738-6400, Option 4.
- PROJECT NOTES
- Where existing grades are greater or less than 150mm of final grade, grade stakes indicating final grade shall be provided at, or along each installation as required by Hydro Ottawa.
  - As-built drawing(s) shall be completed for this project. Each drawing issued for construction shall be marked "As-Built" with the appropriate Hydro Ottawa Construction Verification Program (CVP) sign-offs completed.
  - All secondary service cables on private sites shall be installed, owned and maintained by the Developer unless otherwise noted by Hydro Ottawa.
  - The Developer shall supply all cable lugs and terminate all Customer-owned cables at the transformer.
  - Primary cable shall be installed in accordance with Hydro Ottawa specification GCS0004 unless otherwise noted.
  - Connection to existing concrete duct banks shall be completed by an approved Hydro Ottawa contractor. All work on existing Hydro Ottawa plant shall be completed in the presence of a Hydro Ottawa inspector and in accordance with the Occupational Health and Safety Act.
  - Civil work shall be installed in accordance with Hydro Ottawa specification GCS0005 unless otherwise noted.
  - Completed ducts shall be rodded by the site contractor in the presence of a Hydro Ottawa inspector and shall be clear of all extraneous material. A mandrel to nominal diameter of the duct and approved by Hydro Ottawa will be passed through each duct. One (1) 3mm polypropylene rope shall be left in each duct.
  - Underground secondary cable terminations and testing shall be in accordance with Hydro Ottawa guideline GCG0001, by others.



4 ELECTRICAL ROOM DUCT ENTRY DETAIL 1:50



2 DUCTS TRANSFORMER & ENTRY 1:50



1 POWER & COMMUNICATIONS DUCT SITE PLAN 1:200

- NOTES:
- BOLLARD AND GROUNDING GRID BY HYDRO OTTAWA
  - REINSTATEMENT BY LANDSCAPE CONTRACTOR

**Ottawa**  
 DEPARTMENT OF CORPORATE SERVICES / SERVICES GÉNÉRAUX  
 REAL PROPERTY ASSET MANAGEMENT BRANCH /  
 DIRECTION DE LA GESTION DES ACTIFS ET DES BIENS IMMOBILIERS  
 DESIGN AND CONSTRUCTION DIVISION /  
 DIVISION DE LA CONCEPTION ET DE LA CONSTRUCTION

GREG GEDDES CHIEF CORPORATE SERVICES OFFICER /  
 CHEF DES SERVICES GÉNÉRAUX  
 S.A. FINNAMORE, O.A.A. DIRECTOR / DIRECTEUR, O.A.O.  
 ROBERT VALLANCOURT, O.A.A. MANAGER / GESTIONNAIRE, O.A.O.

FOR / POUR  
**CORPORATE SERVICES**  
**REAL PROPERTY ASSET MANAGEMENT**  
**DESIGN & CONSTRUCTION**



**Hobin Architecture**  
 Incorporated  
 43 Pamela Street  
 Ottawa, Ontario  
 Canada K1S 3K7  
 T: 613-238-7200  
 F: 613-235-9065  
 E: [info@hobin.com](mailto:info@hobin.com)  
[hobinarc.com](http://hobinarc.com)

**HOBIN**  
 ARCHITECTURE

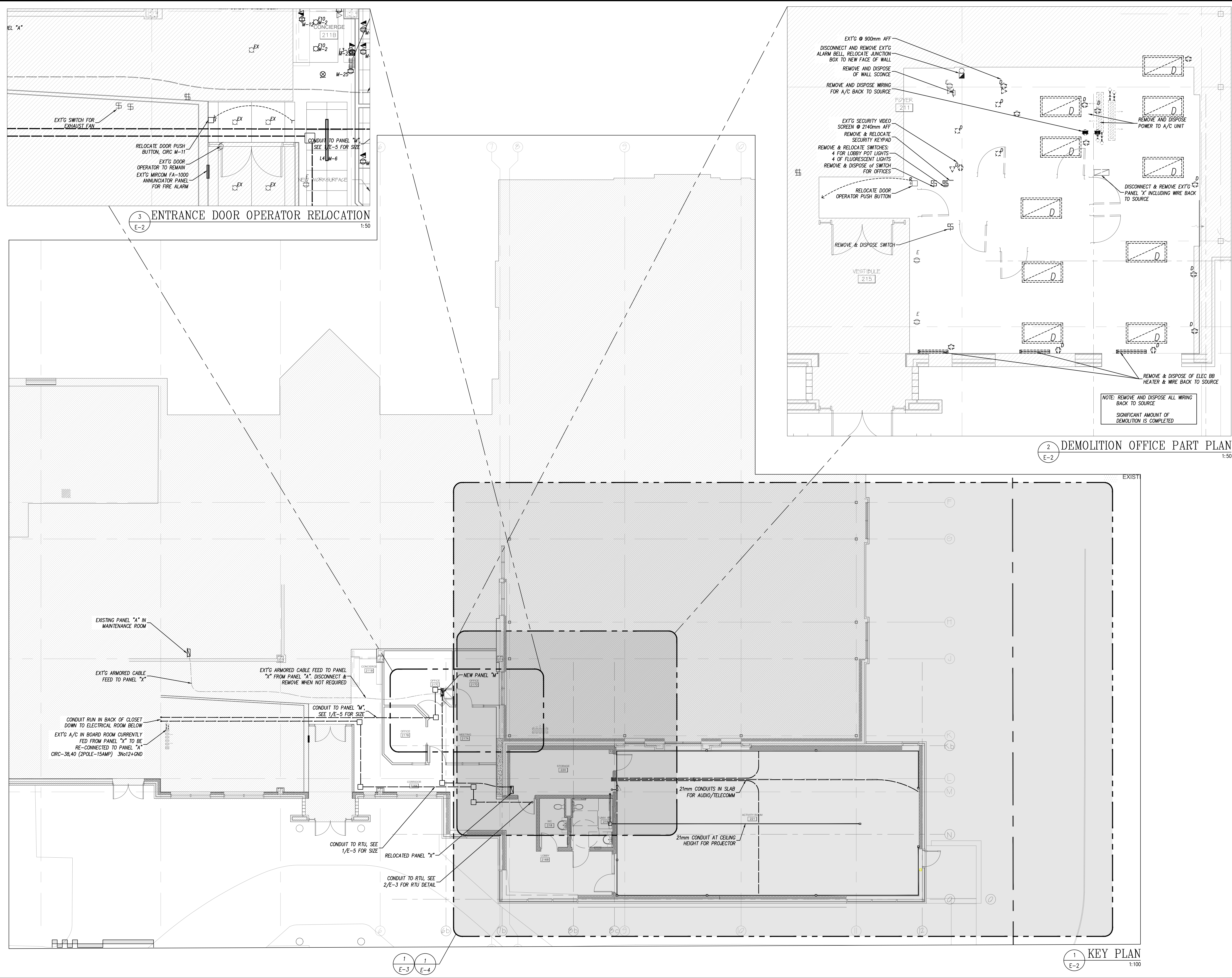
NO.	REVISIONS	DATE
10.		
9.		
8.		
7.		
6.		
5.		
4.	ISSUED FOR CONSTRUCTION	2017-10-11
3.	ISSUED FOR ELECTRICAL ADDENDUM EA-01	2017-08-11
2.	ISSUED FOR BUILDING PERMIT	2017-07-27
1.	ISSUED FOR COORDINATION	2017-07-14

USE OF THESE DRAWINGS IS RESTRICTED SOLELY TO THE CONSTRUCTION FOR WHICH THEY WERE DEVELOPED. BEKOLAY AND ASSOCIATES LTD. ASSUME NO RESPONSIBILITY FOR ANY SUBSEQUENT USE. DO NOT SCALE THE DRAWINGS BUT RESPECT ANY DIMENSIONS SPECIFICALLY IDENTIFIED IN NOTES OR TEXT. ALL CONTRACTORS MUST VISIT THE SITE AND ARE RESPONSIBLE FOR VERIFYING ANY AND ALL DIMENSIONS THAT RELATE TO THEIR WORK. REPORT ANY DISCREPANCIES IMMEDIATELY TO THE CONSULTANT.

**BEKOLAY & Associates Ltd.**  
 Consulting Engineers  
 200 1617 WOODWARD DR. OTTAWA  
 ON K1H 8L4  
 TEL: 613-723-0474 FAX: 613-723-0864  
 email: [info@bekolay.com](mailto:info@bekolay.com)

PROJECT: Dovercourt 2017 Phase 2  
 DRAWING: Service Feed Site Plan

DATE: 11-Oct-17 SCALE: AS NOTED  
 DRAWN BY: MAG DESIGNED BY: CLW  
 JOB NO.: 2017-009 CHECKED BY: CLW  
 DRAWING NO.:  
  
 E-1 of 5



**Hobin Architecture**  
Incorporated

63 Parnilla Street  
Ottawa, Ontario  
Canada K1S 3K7

T: 613-239-7209  
F: 613-235-8065  
E: m@hobin.com  
hobin.com

**HOBIN**  
ARCHITECTURE

NO.	REVISIONS	DATE
10.		
9.		
8.		
7.		
6.		
5.		
4.	ISSUED FOR CONSTRUCTION	2017-10-11
3.	ISSUED FOR ELECTRICAL ADDENDUM EA-01	2017-08-11
2.	ISSUED FOR BUILDING PERMIT	2017-07-27
1.	ISSUED FOR COORDINATION	2017-07-14

USE OF THESE DRAWINGS IS RESTRICTED SOLELY TO THE CONSTRUCTION FOR WHICH THEY WERE DEVELOPED. BEKOLY AND ASSOCIATES LTD. ASSUME NO RESPONSIBILITY FOR ANY SUBSEQUENT USE. DO NOT SCALE THE DRAWINGS BUT RESPECT ANY DIMENSIONS SPECIFICALLY IDENTIFIED IN NOTES OR TEXT. ALL CONTRACTORS MUST VISIT THE SITE AND ARE RESPONSIBLE FOR VERIFYING ANY AND ALL DIMENSIONS THAT RELATE TO THEIR WORK. REPORT ANY DISCREPANCIES IMMEDIATELY TO THE CONSULTANT.

**BEKOLY & Associates Ltd.**  
Consulting Engineers

200-187 WOODWARD DR., OTTAWA  
PH 613-723-0474, FAX 613-723-0884  
email: bekoly@bega.ca

11-Oct-17

PROJECT **Dovercourt 2017**  
**Phase 2**

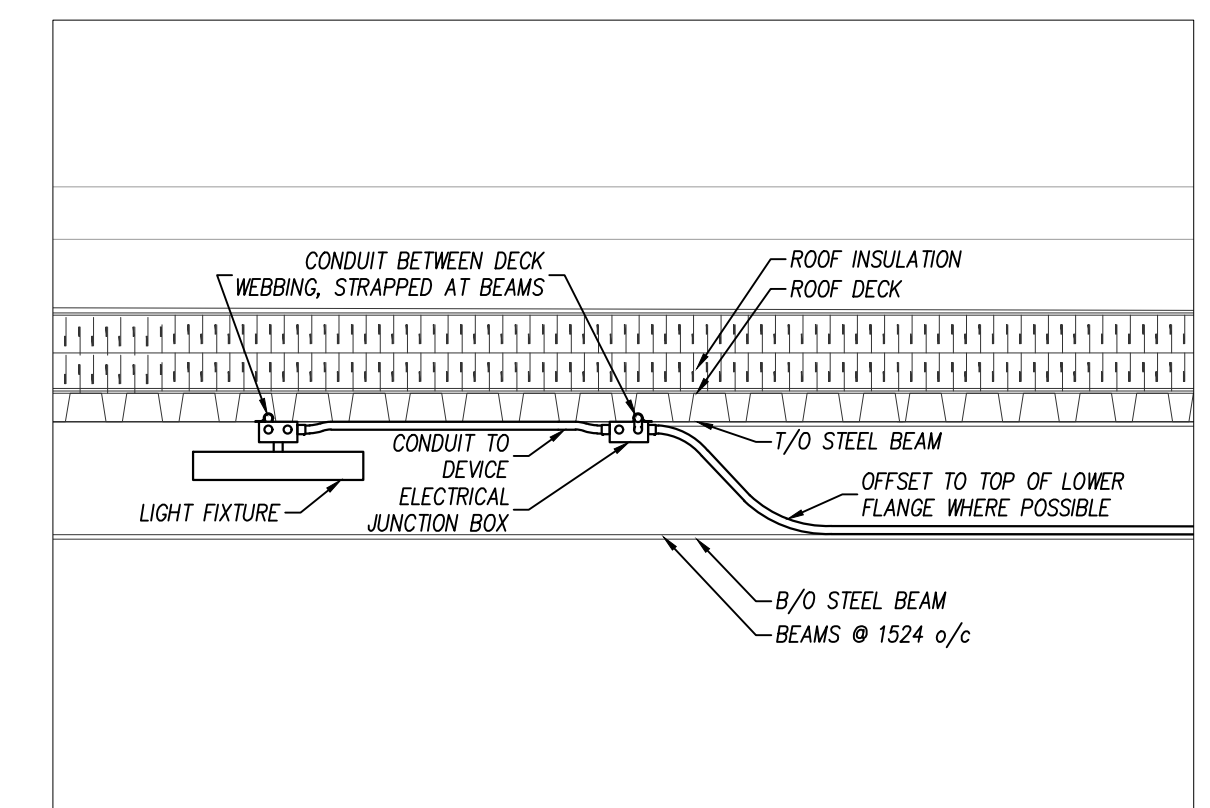
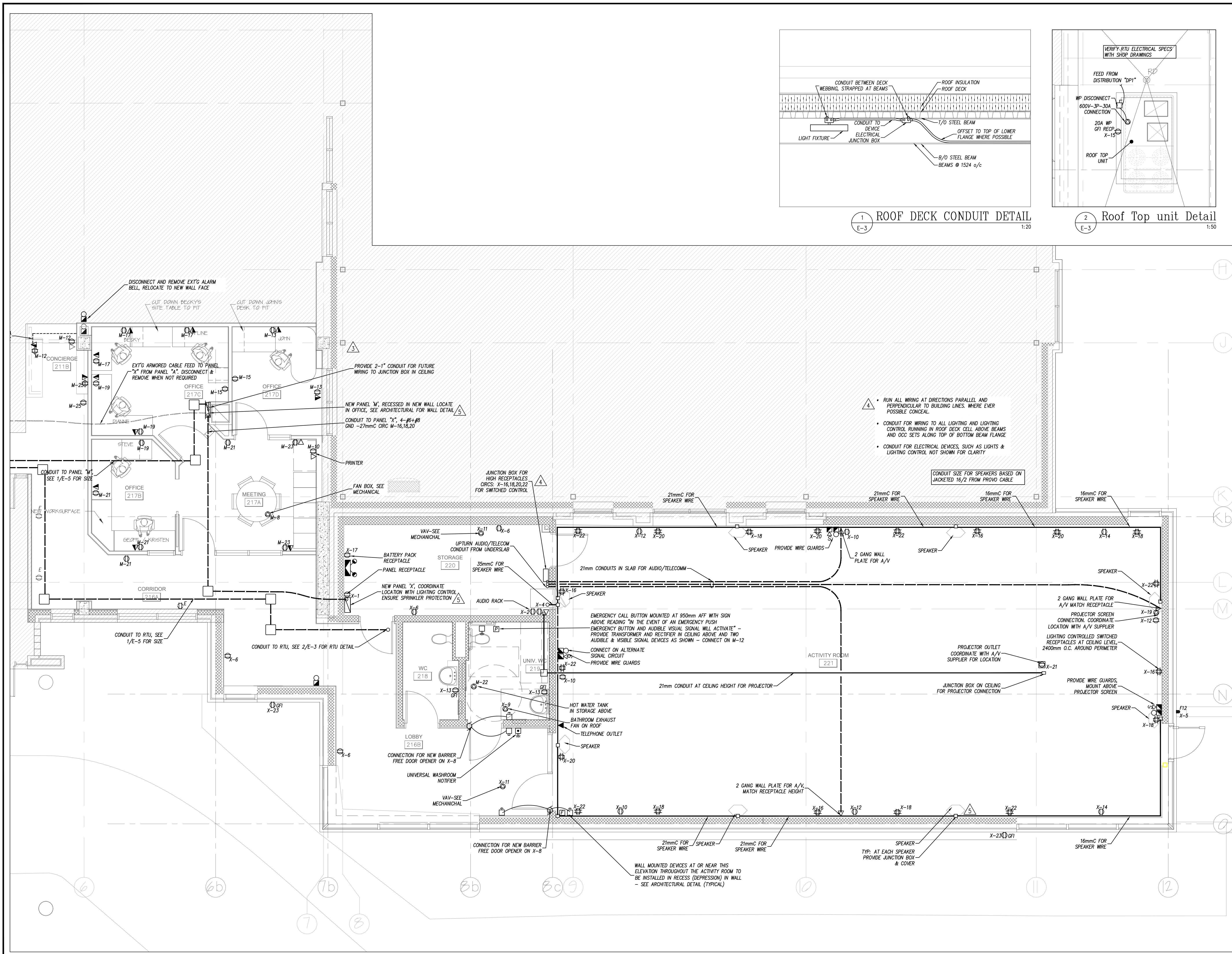
DRAWING **CONDUIT (KEY) PLAN**  
**DEMOLITION PART PLAN**

DATE: 11-Oct-17 SCALE: AS NOTED

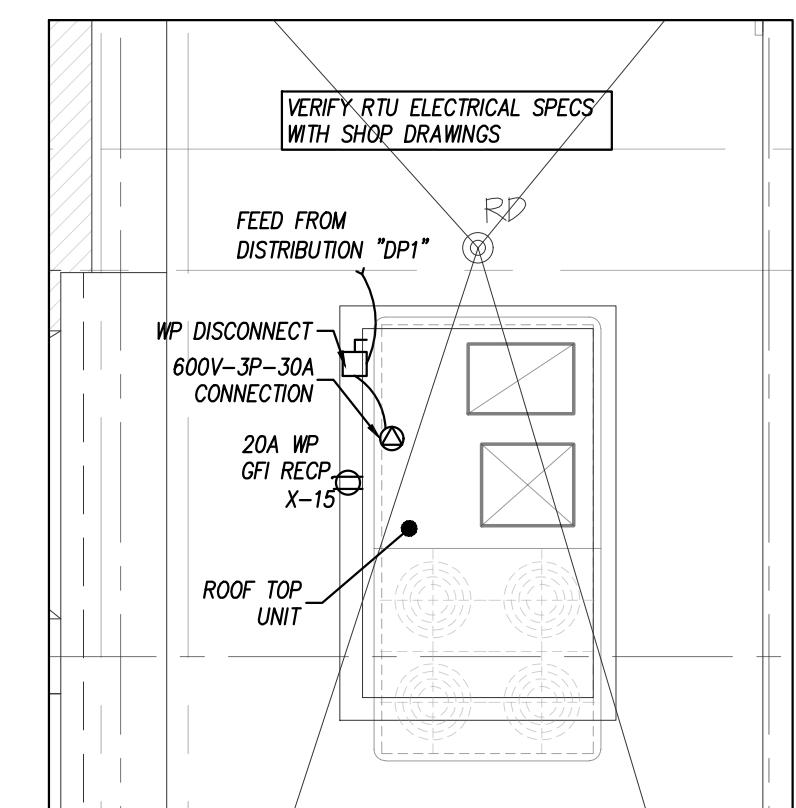
DRAWN BY: MAG DESIGNED BY: CLW

JOB NO.: 2017-009 CHECKED BY: CLW

DRAWING NO.: E-2 of 5



1 ROOF DECK CONDUIT DETAIL  
E-3 1:20

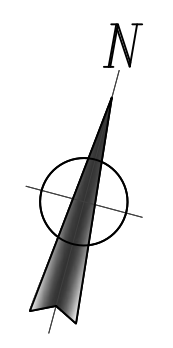


2 Roof Top unit Detail  
E-3 1:50

- RUN ALL WIRING AT DIRECTIONS PARALLEL AND PERPENDICULAR TO BUILDING LINES, WHERE EVER POSSIBLE CONCEAL.
- CONDUIT FOR WIRING TO ALL LIGHTING AND LIGHTING CONTROL RUNNING IN ROOF DECK CELL ABOVE BEAMS AND OCC SETS ALONG TOP OF BOTTOM BEAM FLANGE
- CONDUIT FOR ELECTRICAL DEVICES, SUCH AS LIGHTS & LIGHTING CONTROL NOT SHOWN FOR CLARITY



**Hobin Architecture Incorporated**  
 63 Pamela Street  
 Ottawa, Ontario  
 Canada K1S 3K7  
 T: 613-238-7209  
 F: 613-235-8065  
 E: info@hobin.com  
 hobin.com  
**HOBIN**  
 ARCHITECTURE



NO.	REVISIONS	DATE
10.		
9.		
8.		
7.		
6.		
5.		
4.	ISSUED FOR CONSTRUCTION	2017-10-11
3.	ISSUED FOR ELECTRICAL ADDENDUM EA-01	2017-08-11
2.	ISSUED FOR BUILDING PERMIT	2017-07-27
1.	ISSUED FOR COORDINATION	2017-07-14

USE OF THESE DRAWINGS IS RESTRICTED SOLELY TO THE CONSTRUCTION FOR WHICH THEY WERE DEVELOPED. BEKOLAY AND ASSOCIATES LTD. ASSUME NO RESPONSIBILITY FOR ANY SUBSEQUENT USE. DO NOT SCALE THE DRAWINGS BUT RESPECT ANY DIMENSIONS SPECIFICALLY IDENTIFIED IN NOTES OR TEXT. ALL CONTRACTORS MUST VISIT THE SITE AND ARE RESPONSIBLE FOR VERIFYING ANY AND ALL DIMENSIONS THAT RELATE TO THEIR WORK. REPORT ANY DISCREPANCIES IMMEDIATELY TO THE CONSULTANT.

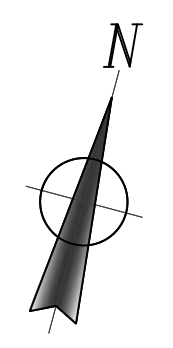
**BEKOLAY & Associates Ltd.**  
 Consulting Engineers  
 300-1877 WOODBINE DR., OTTAWA  
 ON N1Y 2N1  
 PH: 613-723-0474, FAX: 613-723-0864  
 email: bekolay@bep.ca  
 11-Oct-17

PROJECT: **Dovercourt 2017 Phase 2**  
 DRAWING: **Level 2 Power Plan**

DATE: 11-Oct-17 SCALE: 1:50  
 DRAWN BY: MAG DESIGNED BY: CLW  
 JOB NO.: 2017-009 CHECKED BY: CLW  
 DRAWING NO.:  
**C. L. WOOD**  
 OCT 11, 2017  
 LICENSED PROFESSIONAL ENGINEER  
 PROVINCE OF ONTARIO  
 E-3 of 5



**Hobin Architecture**  
 Incorporated  
 63 Pamela Street  
 Ottawa, Ontario  
 Canada K1S 3K7  
 T: 613-238-7200  
 F: 613-235-8065  
 E: info@hobin.com  
 hobinarc.com



10.		
9.		
8.		
7.		
6.		
5.	ISSUED FOR CONSTRUCTION	2017-10-11
4.	ISSUED FOR ELECTRICAL ADDENDUM EA-02	2017-08-16
3.	ISSUED FOR ELECTRICAL ADDENDUM EA-01	2017-08-11
2.	ISSUED FOR BUILDING PERMIT	2017-07-27
1.	ISSUED FOR COORDINATION	2017-07-14

NO. REVISIONS DATE

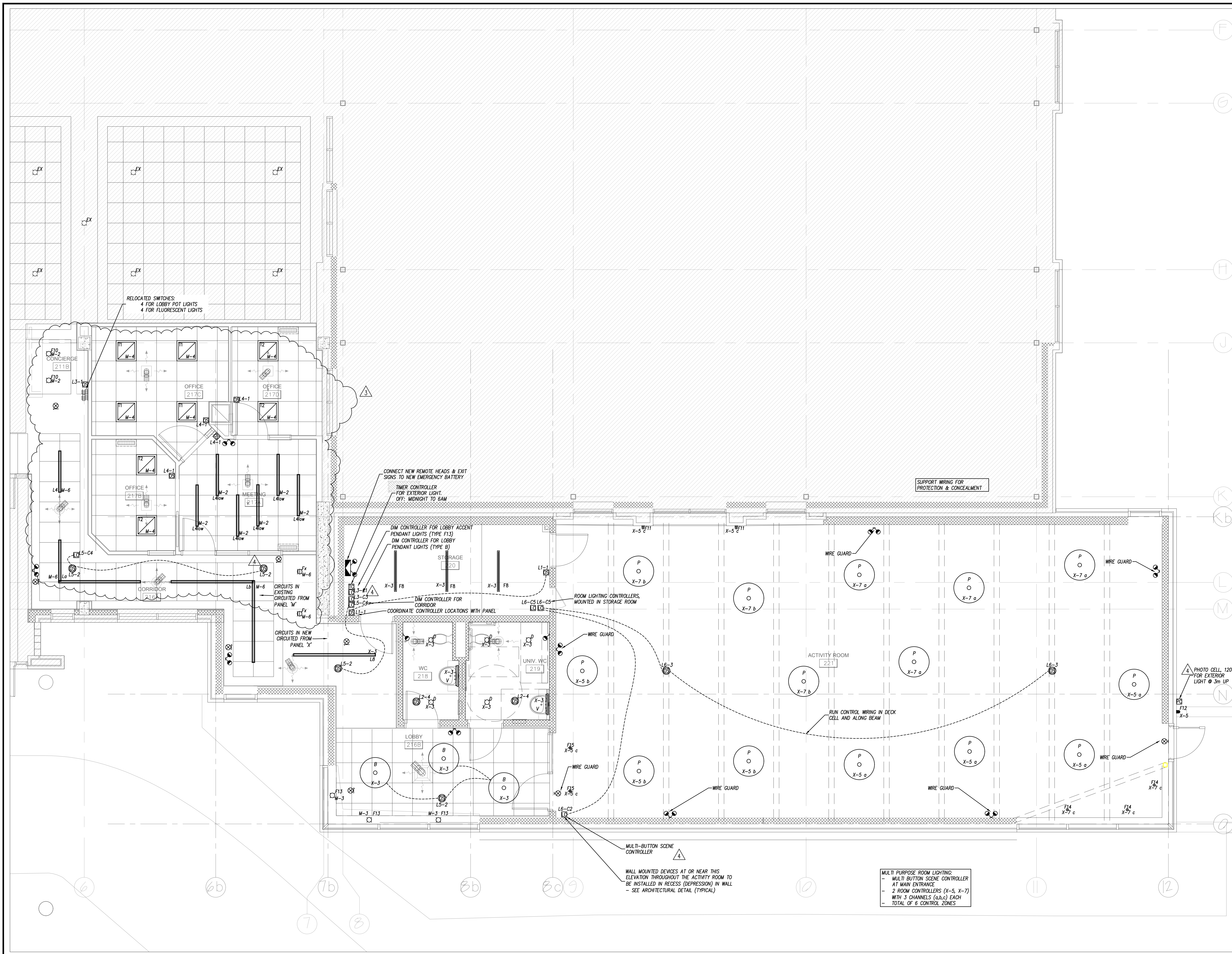
USE OF THESE DRAWINGS IS RESTRICTED SOLELY TO THE CONSTRUCTION FOR WHICH THEY WERE DEVELOPED. BEKOLAY AND ASSOCIATES LTD. ASSUME NO RESPONSIBILITY FOR ANY SUBSEQUENT USE. DO NOT SCALE THE DRAWINGS BUT RESPECT ANY DIMENSIONS SPECIFICALLY IDENTIFIED IN NOTES OR TEXT. ALL CONTRACTORS MUST VISIT THE SITE AND ARE RESPONSIBLE FOR VERIFYING ANY AND ALL DIMENSIONS THAT RELATE TO THEIR WORK. REPORT ANY DISCREPANCIES IMMEDIATELY TO THE CONSULTANT.

**BEKOLAY & Associates Ltd.**  
 Consulting Engineers  
 200-1827 WOODWARD DR., OTTAWA  
 ON K1N 6L5  
 PH: 613-723-0474, FAX: 613-723-0884  
 EMAIL: bekolay@bep.ca

PROJECT **Dovercourt 2017 Phase 2**  
 DRAWING **Lighting Addition Part Plan**

DATE	11-Oct-17	SCALE	AS NOTED
DRAWN BY	MAG	DESIGNED BY	CLW
JOB NO.	2017-009	CHECKED BY	CLW
DRAWING NO.			

**C. L. WOOD**  
 OCT 11, 2017  
 PROVINCE OF ONTARIO



1 Lighting Addition Part plan  
 E-4 1:50

