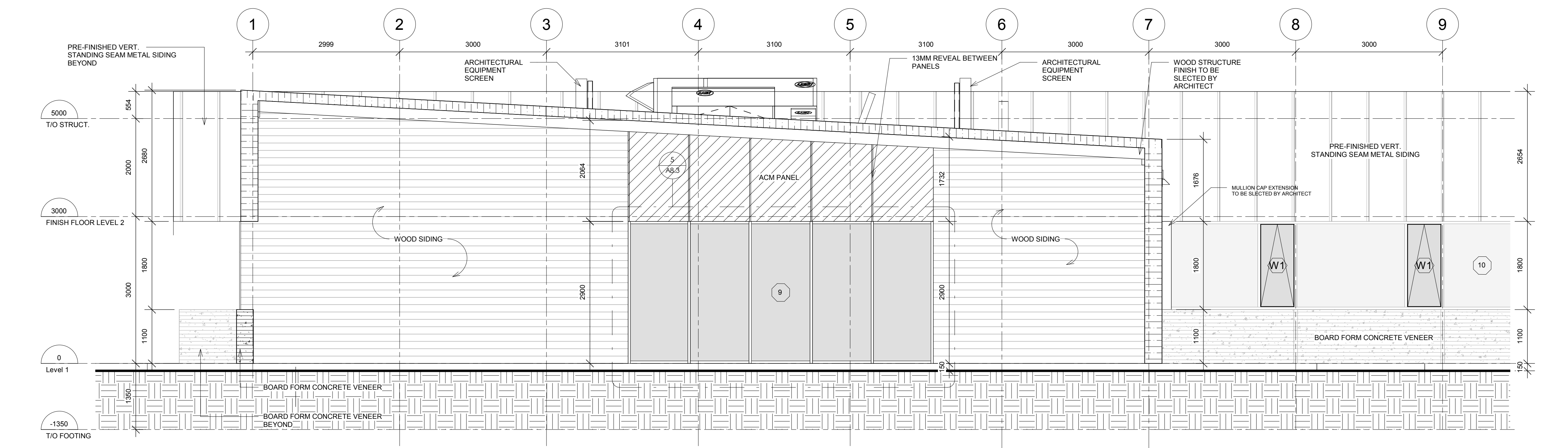
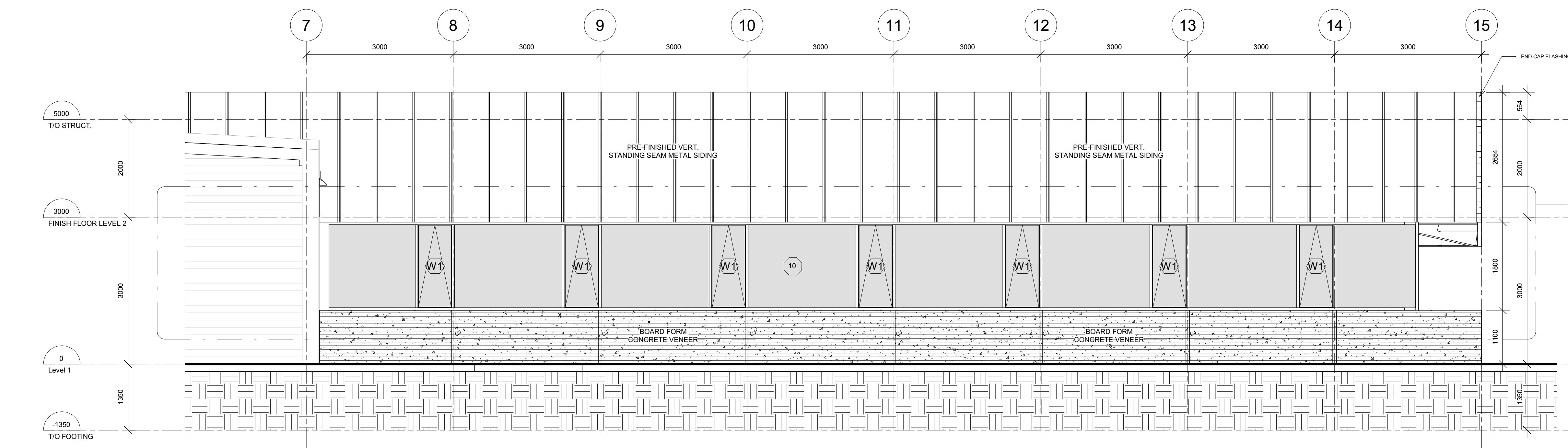


Revision Schedule		
No.	Date	Particular
1	2017.10.11	ISSUE FOR BUILDING PERMIT & TENDER
2	2017.08.22	ISSUE FOR CLIENT REVIEW
3	2017.10.06	ISSUE FOR CLIENT REVIEW
4	2017.10.12	ISSUE FOR TENDER

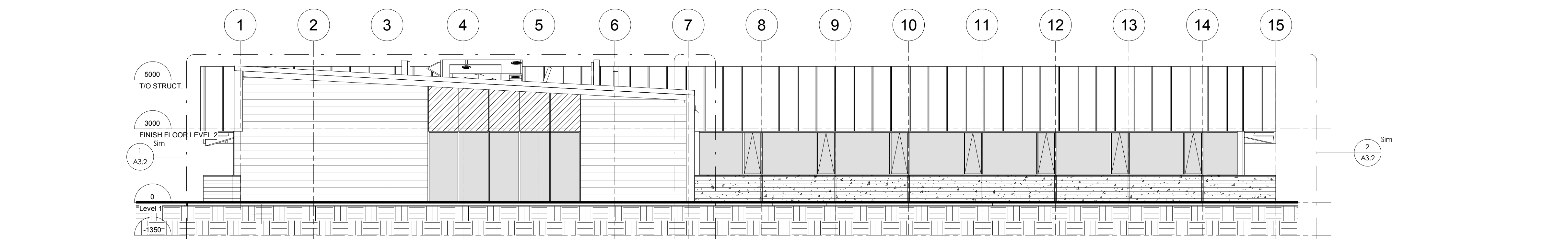
All dimensions and measurements must be checked and verified by the General Contractor. Reproduction of drawings and related documents in whole or in part is forbidden without written permission of The Ventin Group.



**1 EAST 1**  
A3.2  
1:50



**2 EAST 2**  
A3.2  
1:50



**3 EAST KEY PLAN**  
A3.2  
1:100

- EXT. ELEVATION LEGEND**
- ELEVATION REFERENCE
  - DETAIL REFERENCE
  - WALL SECTION REFERENCE
  - BUILDING SECTION REFERENCE
  - DATUM
  - GRID LINE
  - DOOR TYPE (COORD. W/ DOOR SCHED.)
  - WINDOW # (ABOVE FINISHED FLOOR)
  - WINDOW # & FROSTED VINYL FILM (W/ VINYL FILM APPLICATION ON #4 SURFACE)
  - METAL MATCHING EXTERIOR JAMB / SILL / HEAD ON EX. OPENINGS WHERE WALL SYSTEM IS CHECKED BY NEW W.F. FINISH
  - FINISH & MATERIAL OF EXTENSIONS TO MATCH EX. MAKE GOOD WHERE DISTURBED, PROVIDE CLEAN TRANSITIONS TYP.
  - CURTAIN WALL #
  - SCREEN #
  - LIGHT FIXTURES
  - PERSONAL ADDRESS SYSTEM
  - PUSH BUTTON FOR POWER DOOR OPERATOR (95mm TO CENTER OF BUTTON A/F/TYP.)
  - SHAMES CONNECTION
  - FIRE FIGHTERS CONNECTION (800mm A/F GRADE)
  - HOSE BIB
  - MECHANICAL LOUVERS (TO BE F.I. AND/OR COLOUR)
  - SCUPPER DRAIN LOCATION (SCUPPER DRAIN ARE LOCATED IN THE GENERAL LOCATION ON THE ROOF PLAN (COORD. W/ R.A.# (COORD. W/ R.A.# (MAX. DISTANCE 7.5 - 9m (25 - 30FT)) (SUBMIT SHOP DWG. S))
  - CONTROL JOINT LOCATION (BOARD FORM CONCRETE VENEER CONTROL JOINT TO BE 100mm REVEAL WITH CONTROL JOINT CENTER)
  - COMPARTMENTALIZATION OF CAVITY JOINT LOCATION (COORD. W/ R.A.# #FOR TYP. DETAIL OF JOINTS) (COORD. W/ MASONRY MODULE) (MAX. DISTANCE 20m (SUBMIT SHOP DWG. S))
  - BRICK TYPE
  - CAPLESS MULLIONS
  - CAP MULLION

- GENERAL NOTES**
- COLOUR OF DURANAR PAINT FOR OPERATORS, GLAZING STOPS TO BE SELECTED BY ARCHITECT FROM MANUF. FULL RANGE INCLUDING CUSTOM.
  - ALL GLAZING LOWER THAN 1070mm TO BE DESIGNED TO WITHSTAND THE LOADING ON GUARDS AS PER CBC S8.13 WHERE THE DIFFERENCE IN ELEV. BETWEEN THE ADJACENT GROUND OR F.I.R. LEVEL IS MORE THAN 600mm TYP. (COORD. W/ GLASS & GLAZING 8800 SECTION)
  - SHOP DWG. S TO BE IN DIMENSION UNITS AS ILLUSTRATED ON THIS DWG. OR THEY WILL BE SELECTED. IMPERIAL & METRIC BOTH SHOWN IS ACCEPTABLE.
- HATCH IDENTIFICATION MARKER LEGEND**
- VISION GLAZING (DOUBLE INSUL. UNIT)
  - VISION GLAZING (DOUBLE INSUL. UNIT) (W/ VINYL FILM APPLICATION ON #4 SURFACE)
  - VISION GLAZING (SINGLE PANEL)
  - VISION GLAZING (SINGLE PANEL) (W/ VINYL FILM APPLICATION ON #2 SURFACE)
  - SPANDELS GLAZING W/ INSUL. METAL BACKPAN (COLOUR: BLACK - TO BE SELECTED BY ARCHITECT)
  - PRE-FINISHED HORIZ. WOOD SIDING (COLOUR: TO BE SELECTED BY ARCHITECT)
  - BOARD FORMED CONCRETE VENEER (COLOUR / VENEER: TO BE SELECTED BY ARCHITECT)
  - CERAMIC TILES (COLOUR: BLACK - TO BE SELECTED BY ARCHITECT)
  - PRE-FINISHED ALUM. SOLID/COMPOSITE PANEL (COLOUR: BLACK - TO BE SELECTED BY ARCHITECT)
  - PRE-FINISHED METAL FLASHING
  - PRE-FINISHED VERT. STANDING SEAM METAL SIDING / ROOFING (COLOUR: BLACK - TO BE SELECTED BY ARCHITECT)



**Client:**  
Township of McNab Braeside

**Project:**  
21688  
McNab / Braeside Municipal Building  
2473 RUSSETT DRIVE, ARNPRIOR, ONTARIO K7S 3G8

**VG ARCHITECTS**  
THE VENTIN GROUP LTD

**A3.2**