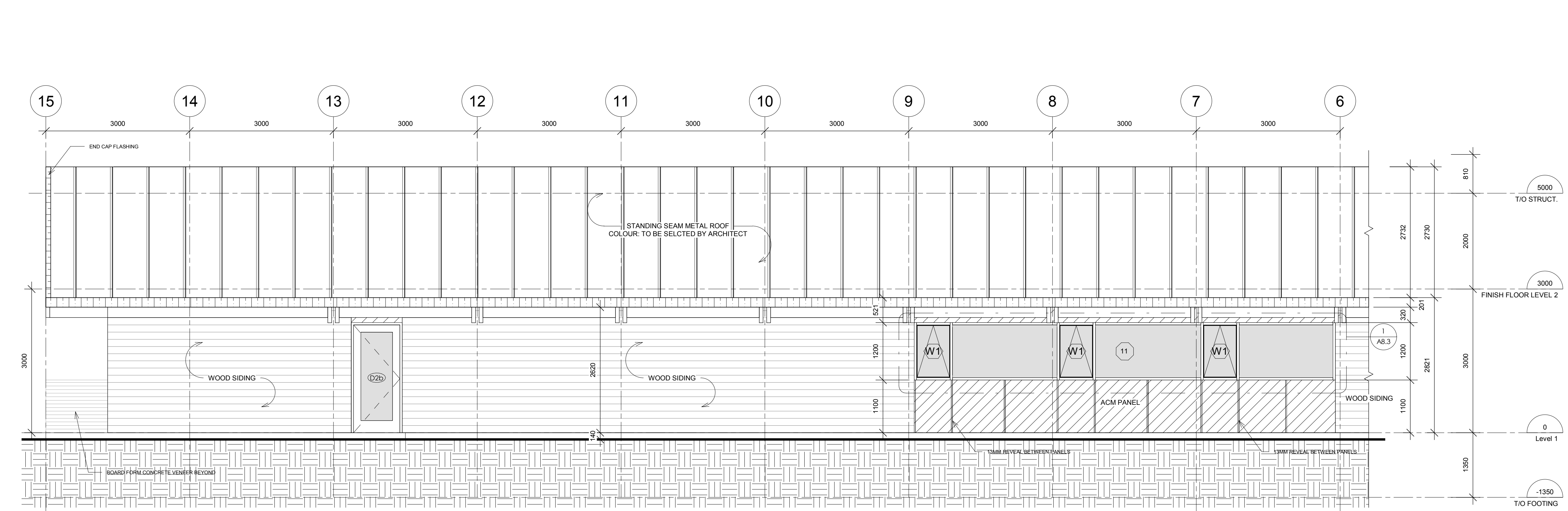


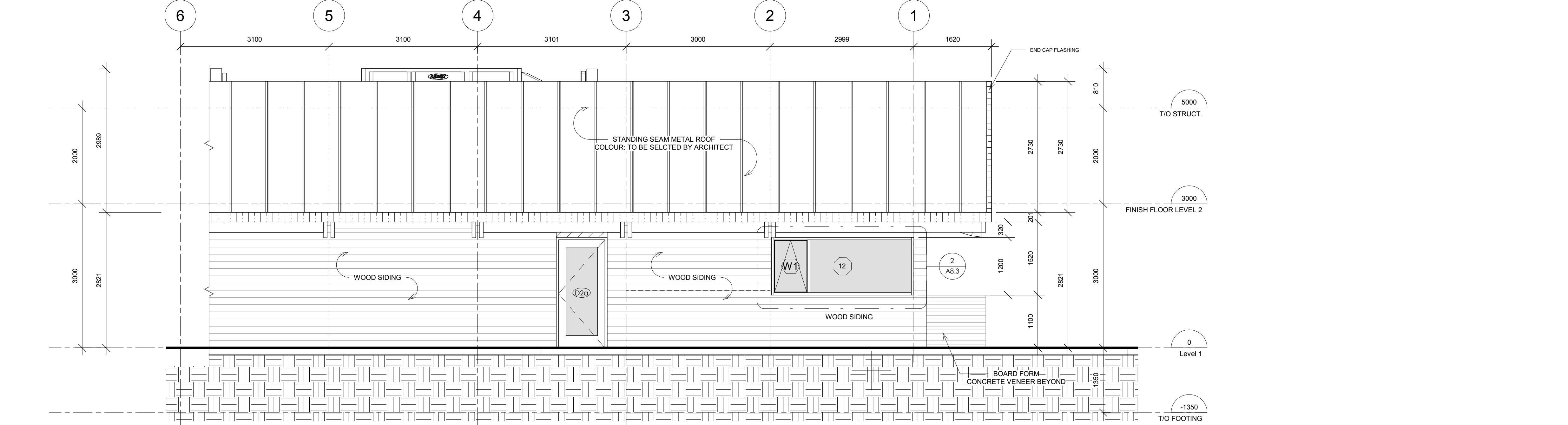
Revision Schedule

No.	Date	Particular
1	2017.10.11	ISSUE FOR BUILDING PERMIT & TENDER
2	2017.08.22	ISSUE FOR CLIENT REVIEW
3	2017.10.06	ISSUE FOR CLIENT REVIEW
4	2017.10.12	ISSUE FOR TENDER

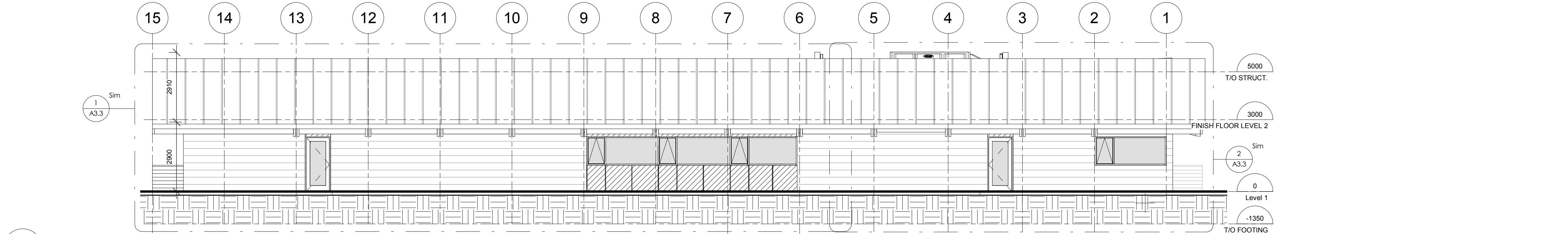
All dimensions and measurements must be checked and verified by the General Contractor. Reproduction of drawings and related documents in whole or in part is forbidden without written permission of The Ventin Group.



1 WEST
A3.3
1:50
500 1000 2000mm

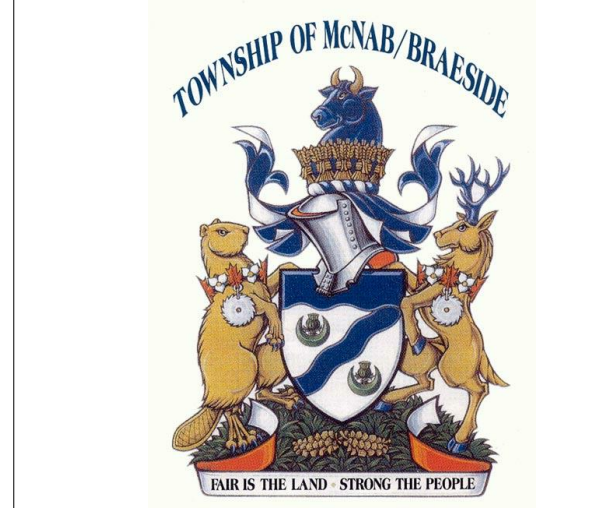


2 WEST 2
A3.3
1:50
500 1000 2000mm



3 WEST KEY PLAN
A3.3
1:100
1 2 5m

- EXT. ELEVATION LEGEND**
- ELEVATION REFERENCE
 - DETAIL REFERENCE
 - WALL SECTION REFERENCE
 - BUILDING SECTION REFERENCE
 - DATUM
 - GRID LINE
 - DOOR TYPE (COORD. W/ DOOR SCH.'S)
A/F/F LEVEL (ABOVE FINISHED FLOOR)
 - WINDOW # & FROSTED VINYL FILM (W/ VINYL FILM APPLICATION ON #4 SURFACE)
 - FILM
 - EXTENSION
 - SCREEN #
 - LIGHT FIXTURES
 - PERSONAL ADDRESS SYSTEM
 - PUSH BUTTON FOR POWER DOOR
 - CIRCUIT BREAKER (925mm TO CENTER OF BUTTON A/F/F TYP.)
 - SAME-SIDE CONNECTION
 - FIRE FINGERS CONNECTION (800mm A/F GRADE)
 - HOSE REEL
 - MECHANICAL LOUVER (TO BE FID. / ANNOU. COLOUR)
 - SCUPPER DRAIN LOCATION (SCUPPER DRAINS ARE LOCATED IN THE GENERAL LOCATION ON THE ROOF PLAN (COORD. W/ RA.F.# (MAX. DISTANCE 7.5 - 9m (25 - 30FT.) SHIRT SHOP DWG. 3)
 - CONTROL JOINT LOCATION (BOARD FORM CONCRETE VENEER CONTROL JOINT TO BE 100mm REVEAL WITH CONTROL JOINT CENTER)
 - COMPARTMENTALIZATION OF CAVITY JOINT LOCATION (COORD. W/ RA.F.# FOR TYP. DETAIL OF JOINTS) (COORD. W/ MAXIMUM MODULE) (MAX. DISTANCE 20m (SUBMIT SHOP DWG. 3)
 - BRICK TYPE
 - CAPLESS MULLION
 - CAP MULLION
- GENERAL NOTES**
- COLOUR OF DURAMAR PAINT FOR OPERATORS, GLAZING STOPS TO BE SELECTED BY ARCHITECT FROM MANUF. FULL RANGE INCLUDING CUSTOM
 - ALL GLAZING LOWER THAN 1070mm TO BE DESIGNED TO WITHSTAND THE LOADING ON GUARDS AS PER CBC 26.13. WHERE THE DIFFERENCE IN ELEV. BETWEEN THE ADJACENT GROUND OR FLR. LEVEL IS MORE THAN 600mm TYP. COORD. W/ GLASS & GLAZING SHOP SECTION
 - SHOP DWG. 3 TO BE IN DIMENSION UNITS AS ILLUSTRATED ON THIS DWG. OR THEY WILL BE REJECTED (IMPERIAL & METRIC BOTH SHOWN & ACCEPTABLE)
- HATCH IDENTIFICATION-MARKER LEGEND**
- VISION GLAZING (DOUBLE INSUL. UNIT)
 - VISION GLAZING (DOUBLE INSUL. UNIT) (W/ VINYL FILM APPLICATION ON #4 SURFACE)
 - VISION GLAZING (SINGLE PANEL)
 - VISION GLAZING (SINGLE PANEL) (W/ VINYL FILM APPLICATION ON #2 SURFACE)
 - SPANDBEL GLAZING W/ INSUL. METAL BACKPAN (COLOUR: TO BE SELECTED BY ARCHITECT)
 - PRE-FINISHED HORIZ. WOOD SIDING (COLOUR: TO BE SELECTED BY ARCHITECT)
 - BOARD FORMED CONCRETE VENEER (COLOUR / VENEER: TO BE SELECTED BY ARCHITECT)
 - CEMENTITIOUS PANEL (COLOUR: BLACK - TO BE SELECTED BY ARCHITECT)
 - PRE-FINISHED ALUM. SOLID/COMPOSITE PANEL (COLOUR: BLACK - TO BE SELECTED BY ARCHITECT)
 - PRE-FINISHED METAL FLASHING
 - PRE-FINISHED VERT. STANDING SEAM METAL SIDING / ROOFING (COLOUR: BLACK - TO BE SELECTED BY ARCHITECT)



Client:
Township of McNab Braeside

Project:
21688
McNab / Braeside Municipal Building
2473 RUSSETT DRIVE, ARNPRIOR, ONTARIO K7S 3G8

VG ARCHITECTS
THE VENTIN GROUP LTD

A3.3

EXTERIOR ELEVATIONS

10/12/2017 12:43:37 PM