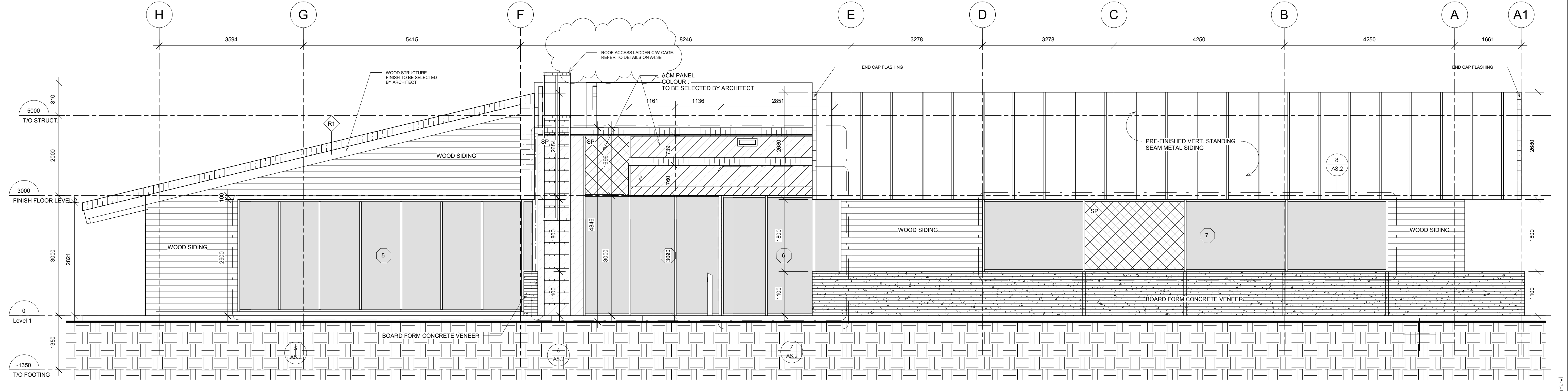


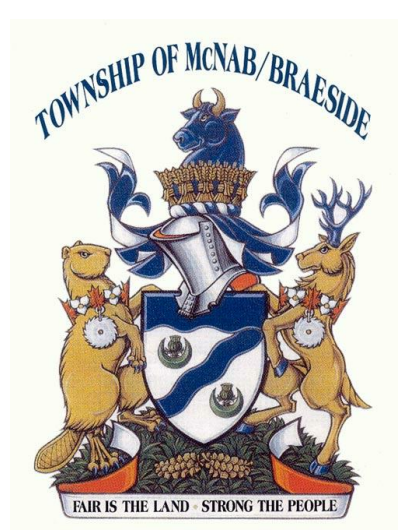
1 NORTH  
A3.1  
1:50  
500 1000 2000mm



2 SOUTH  
A3.1  
1:50  
500 1000 2000mm

- EXT. ELEVATION LEGEND**
- ELEVATION REFERENCE
  - DETAIL REFERENCE
  - WALL SECTION REFERENCE
  - BUILDING SECTION REFERENCE
  - DATUM
  - GRID LINE
  - DOOR TYPE (COORD. W/ DOOR SCHEDULE)
  - WINDOW # & FROSTED VINYL FILM (W/ VINYL FILM APPLICATION ON #4 SURFACE)
  - WINDOW # & FILM (W/ FILM APPLICATION ON #4 SURFACE)
  - WINDOW # & FILM (W/ FILM APPLICATION ON #2 SURFACE)
  - WINDOW # & FILM (W/ FILM APPLICATION ON #1 SURFACE)
  - WINDOW # & FILM (W/ FILM APPLICATION ON #3 SURFACE)
  - WINDOW # & FILM (W/ FILM APPLICATION ON #5 SURFACE)
  - WINDOW # & FILM (W/ FILM APPLICATION ON #6 SURFACE)
  - WINDOW # & FILM (W/ FILM APPLICATION ON #7 SURFACE)
  - WINDOW # & FILM (W/ FILM APPLICATION ON #8 SURFACE)
  - WINDOW # & FILM (W/ FILM APPLICATION ON #9 SURFACE)
  - WINDOW # & FILM (W/ FILM APPLICATION ON #10 SURFACE)
  - WINDOW # & FILM (W/ FILM APPLICATION ON #11 SURFACE)
  - WINDOW # & FILM (W/ FILM APPLICATION ON #12 SURFACE)
  - WINDOW # & FILM (W/ FILM APPLICATION ON #13 SURFACE)
  - WINDOW # & FILM (W/ FILM APPLICATION ON #14 SURFACE)
  - WINDOW # & FILM (W/ FILM APPLICATION ON #15 SURFACE)
  - WINDOW # & FILM (W/ FILM APPLICATION ON #16 SURFACE)
  - WINDOW # & FILM (W/ FILM APPLICATION ON #17 SURFACE)
  - WINDOW # & FILM (W/ FILM APPLICATION ON #18 SURFACE)
  - WINDOW # & FILM (W/ FILM APPLICATION ON #19 SURFACE)
  - WINDOW # & FILM (W/ FILM APPLICATION ON #20 SURFACE)
  - WINDOW # & FILM (W/ FILM APPLICATION ON #21 SURFACE)
  - WINDOW # & FILM (W/ FILM APPLICATION ON #22 SURFACE)
  - WINDOW # & FILM (W/ FILM APPLICATION ON #23 SURFACE)
  - WINDOW # & FILM (W/ FILM APPLICATION ON #24 SURFACE)
  - WINDOW # & FILM (W/ FILM APPLICATION ON #25 SURFACE)
  - WINDOW # & FILM (W/ FILM APPLICATION ON #26 SURFACE)
  - WINDOW # & FILM (W/ FILM APPLICATION ON #27 SURFACE)
  - WINDOW # & FILM (W/ FILM APPLICATION ON #28 SURFACE)
  - WINDOW # & FILM (W/ FILM APPLICATION ON #29 SURFACE)
  - WINDOW # & FILM (W/ FILM APPLICATION ON #30 SURFACE)
  - WINDOW # & FILM (W/ FILM APPLICATION ON #31 SURFACE)
  - WINDOW # & FILM (W/ FILM APPLICATION ON #32 SURFACE)
  - WINDOW # & FILM (W/ FILM APPLICATION ON #33 SURFACE)
  - WINDOW # & FILM (W/ FILM APPLICATION ON #34 SURFACE)
  - WINDOW # & FILM (W/ FILM APPLICATION ON #35 SURFACE)
  - WINDOW # & FILM (W/ FILM APPLICATION ON #36 SURFACE)
  - WINDOW # & FILM (W/ FILM APPLICATION ON #37 SURFACE)
  - WINDOW # & FILM (W/ FILM APPLICATION ON #38 SURFACE)
  - WINDOW # & FILM (W/ FILM APPLICATION ON #39 SURFACE)
  - WINDOW # & FILM (W/ FILM APPLICATION ON #40 SURFACE)
  - WINDOW # & FILM (W/ FILM APPLICATION ON #41 SURFACE)
  - WINDOW # & FILM (W/ FILM APPLICATION ON #42 SURFACE)
  - WINDOW # & FILM (W/ FILM APPLICATION ON #43 SURFACE)
  - WINDOW # & FILM (W/ FILM APPLICATION ON #44 SURFACE)
  - WINDOW # & FILM (W/ FILM APPLICATION ON #45 SURFACE)
  - WINDOW # & FILM (W/ FILM APPLICATION ON #46 SURFACE)
  - WINDOW # & FILM (W/ FILM APPLICATION ON #47 SURFACE)
  - WINDOW # & FILM (W/ FILM APPLICATION ON #48 SURFACE)
  - WINDOW # & FILM (W/ FILM APPLICATION ON #49 SURFACE)
  - WINDOW # & FILM (W/ FILM APPLICATION ON #50 SURFACE)
  - WINDOW # & FILM (W/ FILM APPLICATION ON #51 SURFACE)
  - WINDOW # & FILM (W/ FILM APPLICATION ON #52 SURFACE)
  - WINDOW # & FILM (W/ FILM APPLICATION ON #53 SURFACE)
  - WINDOW # & FILM (W/ FILM APPLICATION ON #54 SURFACE)
  - WINDOW # & FILM (W/ FILM APPLICATION ON #55 SURFACE)
  - WINDOW # & FILM (W/ FILM APPLICATION ON #56 SURFACE)
  - WINDOW # & FILM (W/ FILM APPLICATION ON #57 SURFACE)
  - WINDOW # & FILM (W/ FILM APPLICATION ON #58 SURFACE)
  - WINDOW # & FILM (W/ FILM APPLICATION ON #59 SURFACE)
  - WINDOW # & FILM (W/ FILM APPLICATION ON #60 SURFACE)
  - WINDOW # & FILM (W/ FILM APPLICATION ON #61 SURFACE)
  - WINDOW # & FILM (W/ FILM APPLICATION ON #62 SURFACE)
  - WINDOW # & FILM (W/ FILM APPLICATION ON #63 SURFACE)
  - WINDOW # & FILM (W/ FILM APPLICATION ON #64 SURFACE)
  - WINDOW # & FILM (W/ FILM APPLICATION ON #65 SURFACE)
  - WINDOW # & FILM (W/ FILM APPLICATION ON #66 SURFACE)
  - WINDOW # & FILM (W/ FILM APPLICATION ON #67 SURFACE)
  - WINDOW # & FILM (W/ FILM APPLICATION ON #68 SURFACE)
  - WINDOW # & FILM (W/ FILM APPLICATION ON #69 SURFACE)
  - WINDOW # & FILM (W/ FILM APPLICATION ON #70 SURFACE)
  - WINDOW # & FILM (W/ FILM APPLICATION ON #71 SURFACE)
  - WINDOW # & FILM (W/ FILM APPLICATION ON #72 SURFACE)
  - WINDOW # & FILM (W/ FILM APPLICATION ON #73 SURFACE)
  - WINDOW # & FILM (W/ FILM APPLICATION ON #74 SURFACE)
  - WINDOW # & FILM (W/ FILM APPLICATION ON #75 SURFACE)
  - WINDOW # & FILM (W/ FILM APPLICATION ON #76 SURFACE)
  - WINDOW # & FILM (W/ FILM APPLICATION ON #77 SURFACE)
  - WINDOW # & FILM (W/ FILM APPLICATION ON #78 SURFACE)
  - WINDOW # & FILM (W/ FILM APPLICATION ON #79 SURFACE)
  - WINDOW # & FILM (W/ FILM APPLICATION ON #80 SURFACE)
  - WINDOW # & FILM (W/ FILM APPLICATION ON #81 SURFACE)
  - WINDOW # & FILM (W/ FILM APPLICATION ON #82 SURFACE)
  - WINDOW # & FILM (W/ FILM APPLICATION ON #83 SURFACE)
  - WINDOW # & FILM (W/ FILM APPLICATION ON #84 SURFACE)
  - WINDOW # & FILM (W/ FILM APPLICATION ON #85 SURFACE)
  - WINDOW # & FILM (W/ FILM APPLICATION ON #86 SURFACE)
  - WINDOW # & FILM (W/ FILM APPLICATION ON #87 SURFACE)
  - WINDOW # & FILM (W/ FILM APPLICATION ON #88 SURFACE)
  - WINDOW # & FILM (W/ FILM APPLICATION ON #89 SURFACE)
  - WINDOW # & FILM (W/ FILM APPLICATION ON #90 SURFACE)
  - WINDOW # & FILM (W/ FILM APPLICATION ON #91 SURFACE)
  - WINDOW # & FILM (W/ FILM APPLICATION ON #92 SURFACE)
  - WINDOW # & FILM (W/ FILM APPLICATION ON #93 SURFACE)
  - WINDOW # & FILM (W/ FILM APPLICATION ON #94 SURFACE)
  - WINDOW # & FILM (W/ FILM APPLICATION ON #95 SURFACE)
  - WINDOW # & FILM (W/ FILM APPLICATION ON #96 SURFACE)
  - WINDOW # & FILM (W/ FILM APPLICATION ON #97 SURFACE)
  - WINDOW # & FILM (W/ FILM APPLICATION ON #98 SURFACE)
  - WINDOW # & FILM (W/ FILM APPLICATION ON #99 SURFACE)
  - WINDOW # & FILM (W/ FILM APPLICATION ON #100 SURFACE)
- GENERAL NOTES**
- COLOUR OF DURANAR PAINT FOR OPERATORS, GLAZING STOPS TO BE SELECTED BY ARCHITECT FROM MANUF. FULL RANGE INCLUDING CUSTOM.
  - ALL GLAZING LOWER THAN 1075mm TO BE DESIGNED TO WITHSTAND THE LOADING ON GUARDS AS PER ORC S8-13, WHERE THE DIFFERENCE IN ELEV. BETWEEN THE ADJACENT GROUND ON FLR. LEVEL IS MORE THAN 400mm TYP. COORD. W/ GLASS & GLAZING 8800 SECTION.
  - SHOP DWG'S TO BE IN DIMENSION UNITS AS ILLUSTRATED ON THIS DWG. OR THEY WILL BE REJECTED IMPERIAL & METRIC BOTH SHOWN IS ACCEPTABLE.
- MATCH IDENTIFICATION MARKER LEGEND**
- VISION GLAZING (DOUBLE INSUL. UNIT)
  - VISION GLAZING (DOUBLE INSUL. UNIT) (W/ VINYL FILM APPLICATION ON #4 SURFACE)
  - VISION GLAZING (SINGLE PANEL)
  - VISION GLAZING (SINGLE PANEL) (W/ VINYL FILM APPLICATION ON #2 SURFACE)
  - SPANDREL GLAZING W/ INSUL. METAL BACKPAN (COLOUR TO BE SELECTED BY ARCHITECT)
  - PRE-FINISHED HORIZ. WOOD SIDING (COLOUR TO BE SELECTED BY ARCHITECT)
  - BOARD FORMED CONCRETE VENEER (COLOUR / VENEER TO BE SELECTED BY ARCHITECT)
  - PRE-FINISHED ALUM. SOLID/COMPOSITE PANEL (COLOUR: BLACK - TO BE SELECTED BY ARCHITECT)
  - PRE-FINISHED METAL FLASHING
  - PRE-FINISHED VERT. STANDING SEAM METAL SIDING / ROOFING (COLOUR: BLACK - TO BE SELECTED BY ARCHITECT)
- PERSONAL ADDRESS SYSTEM**
- PUSH BUTTON FOR POWER DOOR OPERATOR (Ø25mm TO CENTER OF BUTTON A/F/TYP.)
  - FIRE FIGHTERS CONNECTION (Ø80mm A/F GRADE)
  - HOSE REEL
  - MECHANICAL (COVER) TO BE PROVIDED - COLOUR TO BE SELECTED BY ARCHITECT
  - SCUPPER DRAIN LOCATION (SCUPPER DRAINS ARE LOCATED IN THE GENERAL LOCATION ON THE ROOF PLAN (COORD. W/ A/A # (COORD. W/ A/A # (MAX. DISTANCE 7.5 - 9m (Ø5 - 30FT.)) (SUBMIT SHOP DWG. 3))
  - CONTROL JOINT LOCATION (COORD. W/ A/A # ELEVATIONS FOR TYP. DETAIL) (COORD. W/ MASONRY MODULE) (MAX. DISTANCE 7.5 - 9m (Ø5 - 30FT.)) (SUBMIT SHOP DWG. 3))
  - COMPARTMENTALIZATION OF CAVITY JOINT LOCATION (COORD. W/ A/A # FOR TYP. DETAIL OF JOINTS) (COORD. W/ MASONRY MODULE) (MAX. DISTANCE 20m (SUBMIT SHOP DWG. 3))
  - BRICK TYPE
  - CAPLESS MULLIONS
  - CAP MULLION

Revision Schedule		
No.	Date	Particular
1	2017.10.11	ISSUE FOR BUILDING PERMIT & TENDER
2	2017.08.22	ISSUE FOR CLIENT REVIEW
3	2017.10.06	ISSUE FOR CLIENT REVIEW
4	2017.10.12	ISSUE FOR TENDER
5	2017.10.23	ISSUE FOR ADDENDUM #1
6	2017.10.23	ISSUE FOR ADDENDUM #3



**Client:**  
Township of McNab Braeside

**Project:**  
21688  
McNab / Braeside Municipal Building  
2473 RUSSETT DRIVE, ARNPRIOR, ONTARIO K7S 3G8

**VG ARCHITECTS**  
THE VENTIN GROUP LTD

**A3.1**

10/26/2017 7:09:35 PM