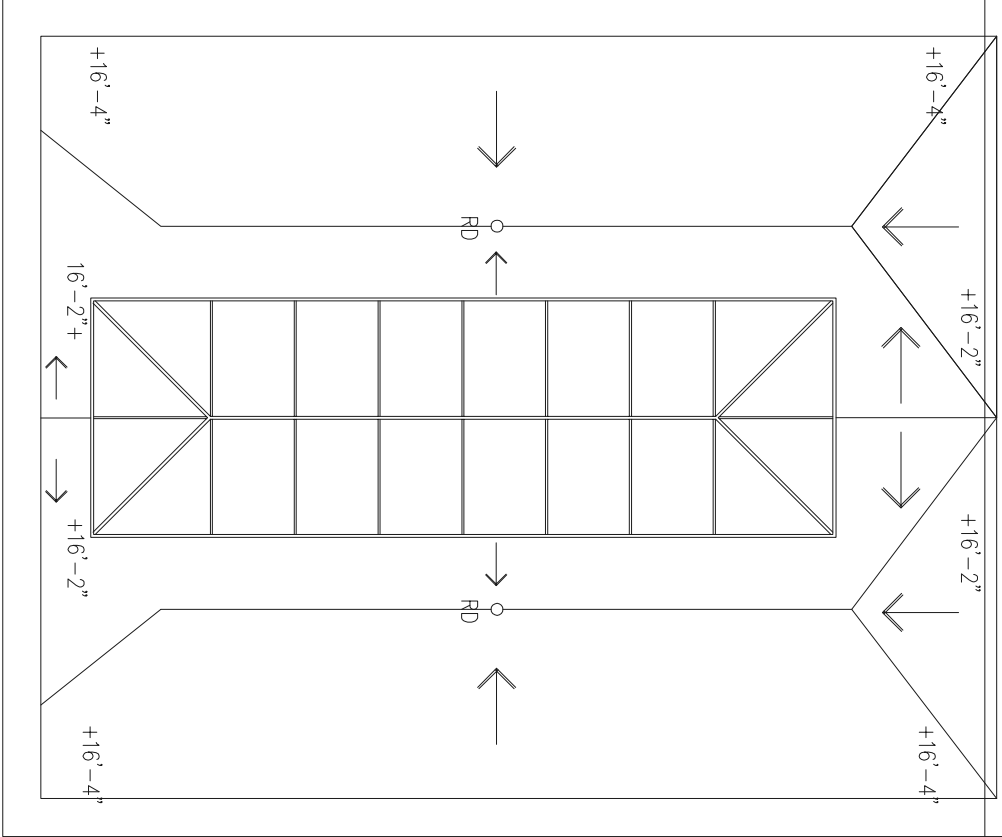


SECOND FLOOR TOWER  
1/8" = 1'-0"

NOTE  
1. EXISTING ADDRESSABLE FIRE ALARM DEVICES & SYSTEMS TO REMAIN. ALL PULL STATIONS ONLY ARE TO BE CHANGED TO TWO STAGE.

2. EXISTING EXIT SIGNS IN PUBLIC CORRIDORS OF SECOND FLOOR TOWER TO REMAIN - EXIT SIGNS ARE ON 120V EMERGENCY POWER.

3. EXISTING CORRIDOR LIGHTING IN PUBLIC CORRIDORS OF SECOND FLOOR TOWER TO REMAIN - CORRIDOR LIGHTING, USED FOR EMERGENCY POWER.



ALL LIGHT SWITCHES TO BE MOUNTED 1100mm AFF - TAKEN FROM TOP OF FINISH FLOOR LEVEL, 146" TO CENTER OF OUTLET BOX.  
ALL F/A PULL STATIONS TO BE MOUNTED 1200mm AFF - TAKEN FROM TOP OF FINISH FLOOR LEVEL, 147" TO CENTER OF OUTLET BOX.  
EXACT LOCATION OF EQUIPMENT TO BE DETERMINED TO COORDINATION WITH MECHANICAL.  
ALL PARTY CONDUIT TO BE C/W FULL ROPS.

GENERAL NOTES:

**QUADRANT**  
ELECTRICAL CONSULTING ENGINEERS  
11000 W. 11TH AVE., SUITE 200, DENVER, CO 80202  
TEL: (303) 555-1465 FAX: (303) 555-1463  
E-MAIL: info@quadrantelectrical.com

NO.	DATE	REVISION
01	07/15/15	ISSUED FOR PERMIT
02	08/10/15	RE-ISSUED FOR PERMIT
03	08/10/15	ISSUED FOR REVIEW
04	08/10/15	PROGRESS ISSUE
05	08/10/15	PROGRESS ISSUE
06	08/10/15	ISSUED FOR PERMIT
07	08/23/14	ISSUED FOR PERMIT

**S.J.L.**  
**S. J. LAWRENCE**  
ARCHITECT INCORPORATED  
218 Washington, Suite 200, Denver, CO 80202  
TEL: (303) 733-7777 FAX: (303) 733-7777  
E-MAIL: sjlawrence@sjlarchitect.com

DATE	BY	REVISION
MAR 14	AL	PROGRESS ISSUE
1/8/14	AL	PROGRESS ISSUE
1/8/14	AL	PROGRESS ISSUE

**SOUTHWAY INN**  
**RETRO-FIT**  
**RETIREMENT HOME**

JOB NO. 02114-021

**ELECTRICAL**  
**PARTIAL SECOND**  
**FLOOR PLAN LIGHTING**

E10