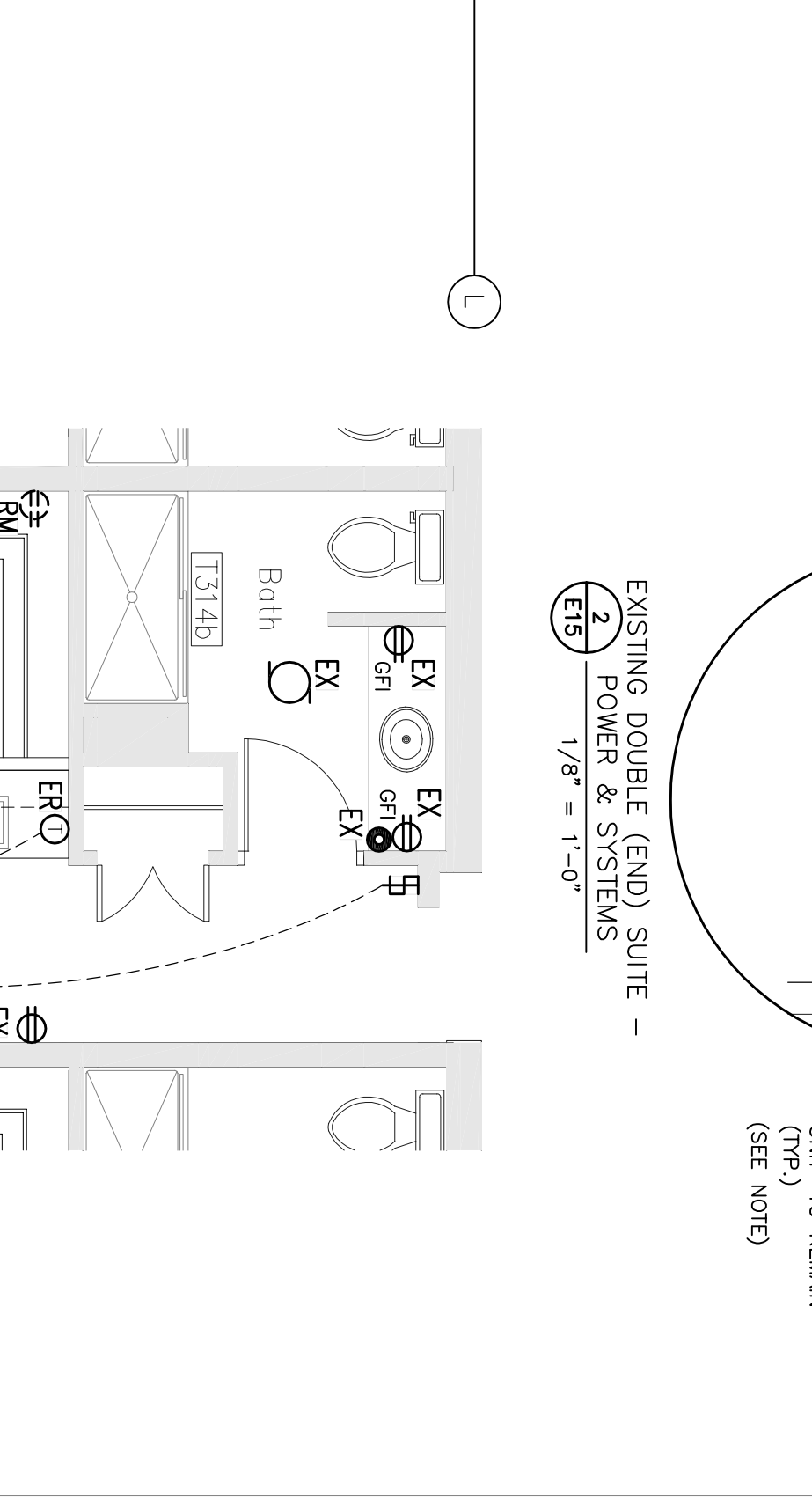
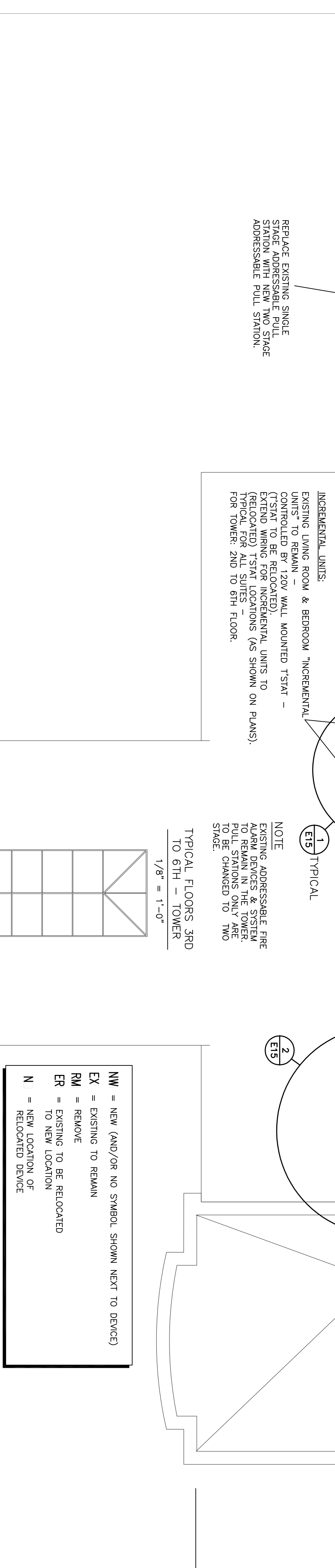
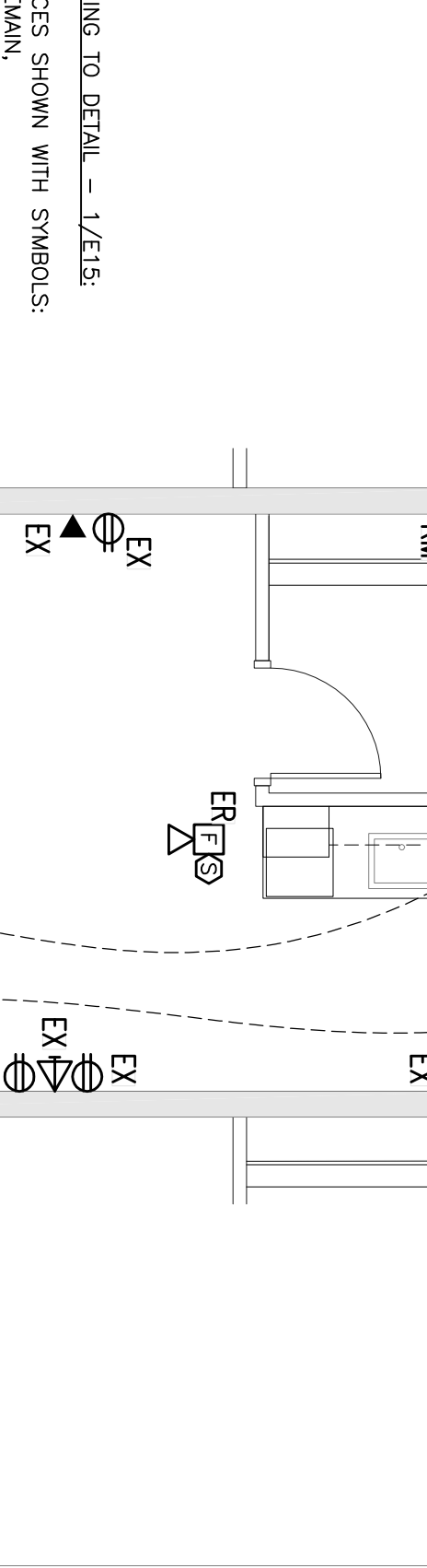
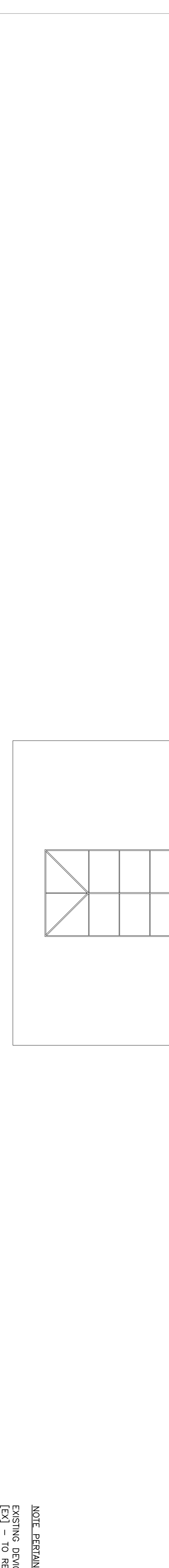


ALL LIGHT SWITCHES TO BE MOUNTED 1100mm AFT - TAKEN FROM TOP OF FINISH FLOOR LEVEL, 1467 TO CENTER OF OUTLET BOX.	
ALL F/A PULL STATIONS TO BE MOUNTED 1200mm AFT - TAKEN FROM TOP OF FINISH FLOOR LEVEL, 1467 TO CENTER OF OUTLET BOX.	
EXACT LOCATION OF EQUIPMENT WITH MECHANICAL TO COORDINATION WITH ALL PARTY CONDUIT TO BE C/W FULL ROPS.	
GENERAL NOTES:	
QUADRANT ELECTRICAL LIMITED, CONSULTING ENGINEERS 1700 BROADVIEW AVE., SUITE 200, OAKVILLE, ONT. L4H 3R7 TEL: (905) 305-1467 FAX: (905) 305-1463 E-Mail: info@quadrantelectrical.ca	
S. J. LAWRENCE ARCHITECT INCORPORATED 28 BROADVIEW AVE., SUITE 200, OAKVILLE, ONT. L4H 3R7 TEL: (905) 305-1467 FAX: (905) 305-1463 E-Mail: info@sjlawrence.ca	
JOB NO.: 001-14-021	
SOUTHWAY INN RETRO-FIT RETIREMENT HOME	
ELECTRICAL PARTIAL THIRD FLOOR PLAN POWER (TYP. 3RD TO 6TH)	
E17	



S. J. LAWRENCE ARCHITECT INCORPORATED 28 BROADVIEW AVE., SUITE 200, OAKVILLE, ONT. L4H 3R7 TEL: (905) 305-1467 FAX: (905) 305-1463 E-Mail: info@sjlawrence.ca	
JOB NO.: 001-14-021	
SOUTHWAY INN RETRO-FIT RETIREMENT HOME	
ELECTRICAL PARTIAL THIRD FLOOR PLAN POWER (TYP. 3RD TO 6TH)	
E17	



S. J. LAWRENCE ARCHITECT INCORPORATED 28 BROADVIEW AVE., SUITE 200, OAKVILLE, ONT. L4H 3R7 TEL: (905) 305-1467 FAX: (905) 305-1463 E-Mail: info@sjlawrence.ca	
JOB NO.: 001-14-021	
SOUTHWAY INN RETRO-FIT RETIREMENT HOME	
ELECTRICAL PARTIAL THIRD FLOOR PLAN POWER (TYP. 3RD TO 6TH)	
E17	