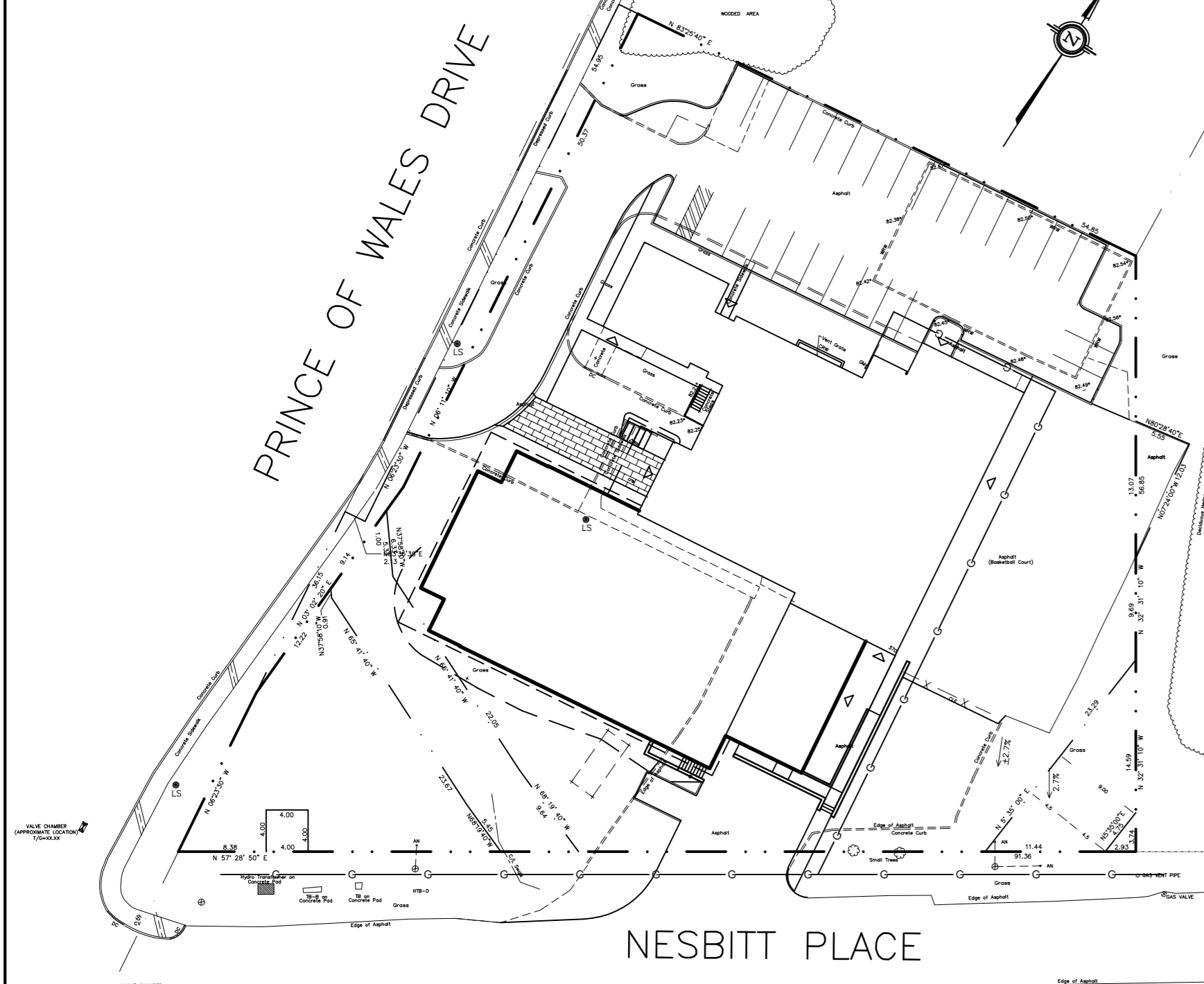


MEADOWLANDS DR

HOG'S BACK ROAD

EXISTING FH  
(APPROXIMATE  
LOCATION)

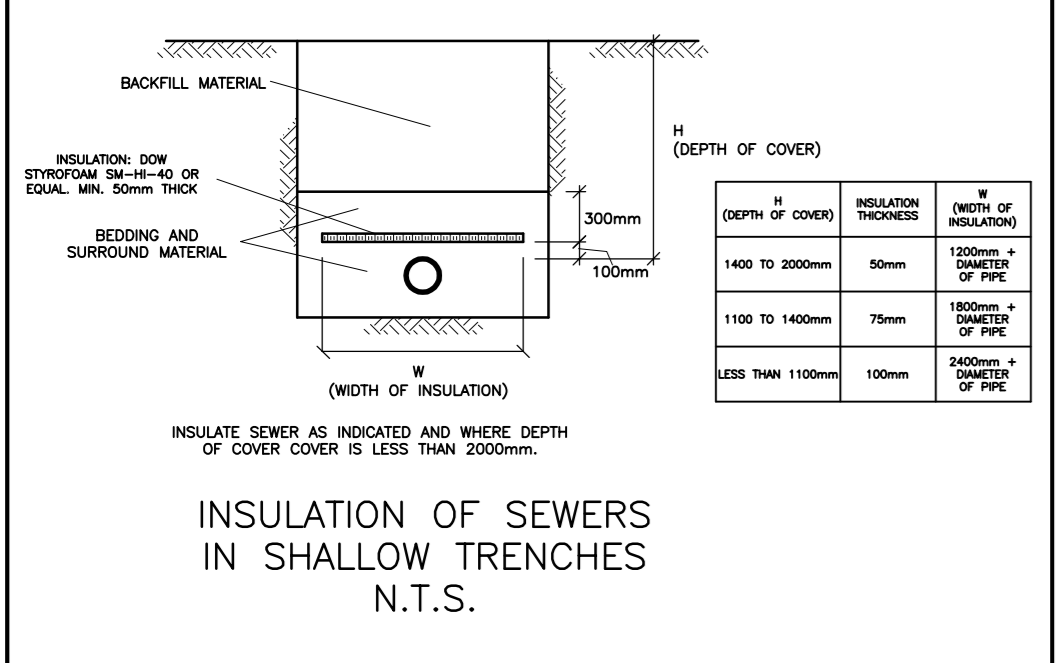
1:500



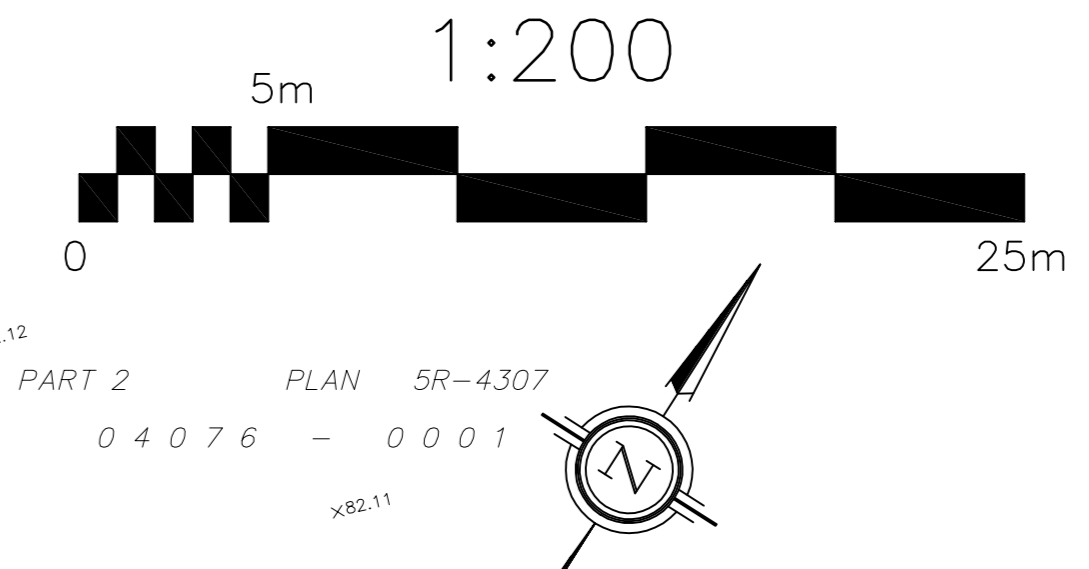
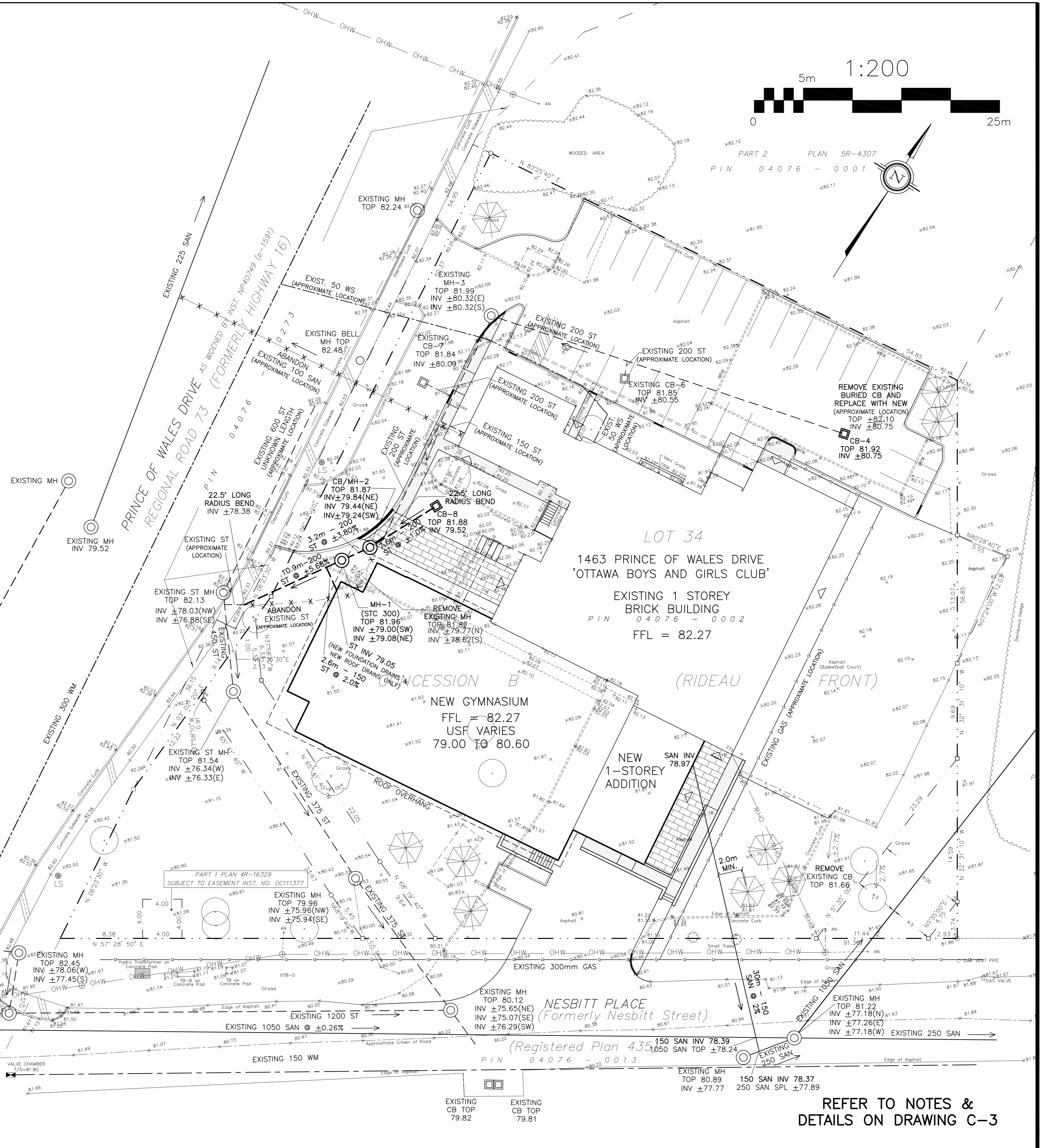
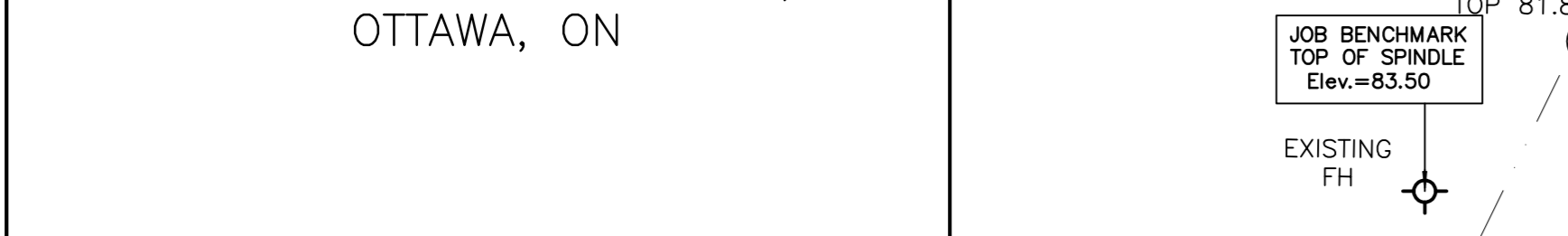
EXISTING FH  
(JOB BENCHMARK  
TOP OF SPINDLE  
ELEV.=83.50)

**CATCHBASIN & MANHOLE SCHEDULE**

REF	TOP	SIZE	TYPE	INVERT AT INLET	INVERT AT OUTLET	NOTES
<b>STORM SEWER</b>						
MH-1	81.96	STORMCEPTOR STC 300	PRE-CAST CONCRETE MANHOLE	±79.08(N)	±79.00(S)	TO OPED 701.010 & CITY OF OTTAWA STORMCEPTOR EXCEPT WITH A DEEP SLAB AS REQUIRED BY STORMCEPTOR
CB/MH-2	81.87	1200mm	PRE-CAST CONCRETE CATCH BASIN/ MANHOLE	±79.84(N)	±79.24(S)	TO OPED 701.010 & CITY OF OTTAWA STORMCEPTOR - FRAMES & COVERS CITY DING NO. 525 & 528 OR OPED 401.015
CB-4	81.92	600 x 600mm	PRE-CAST CONCRETE CATCH BASIN	-	80.75	TO OPED 705.010 & CITY OF OTTAWA STORMCEPTOR - FRAMES & COVERS CITY DING NO. 519.1 OR OPED 401.010
CB-8	81.88	600 x 600mm	PRE-CAST CONCRETE CATCH BASIN	-	79.52	TO OPED 705.010 & CITY OF OTTAWA STORMCEPTOR - FRAMES & COVERS CITY DING NO. 519.1 OR OPED 401.010



OWNER  
BOYS & GIRLS CLUBS OF OTTAWA  
2825 DUMAURIER AVENUE,  
OTTAWA, ON



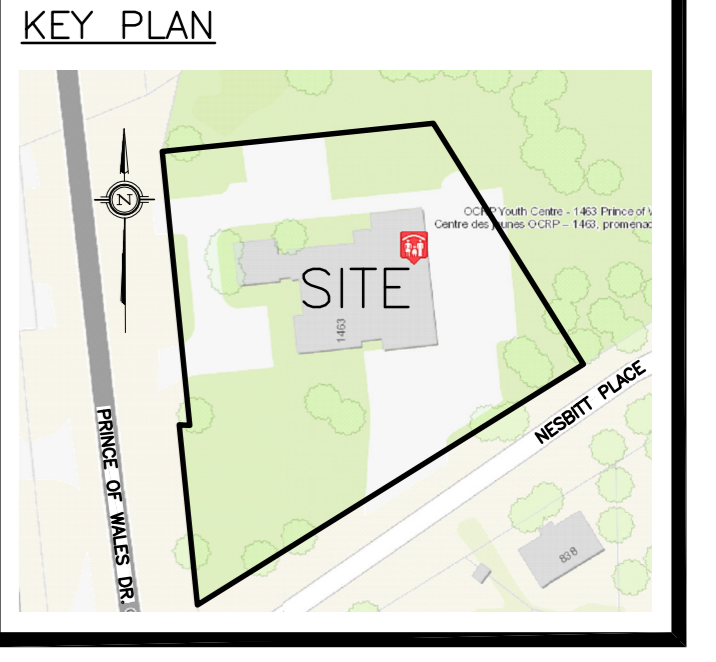
PART 2 PLAN 5R-4307  
PIN 04076 - 0001

**DRAWING LEGEND**

- CB CATCH BASIN
- MH MANHOLE
- CB/MH CATCH BASIN/MANHOLE
- WS / W WATER SERVICE / WATERMAIN
- SAN SANITARY SEWER
- ST STORM SEWER
- VB VALVE & VALVE BOX
- FH FIRE HYDRANT
- UP UTILITY POLE
- EXISTING GRADE ELEVATION
- + 83.79 PROPOSED GRADE ELEVATION
- ASPHALT PAVEMENT
- HEAVY DUTY PAVEMENT
- 0.5% SLOPE OF GRADE
- EMERGENCY OVERLAND FLOW
- SWALE/DITCH (CENTERLINE)
- 150mm CURB / DEPRESSED CURB
- TOP OF SLOPE (T.O.S)
- BOTTOM OF SLOPE (B.O.S)
- SILT FENCE BARRIER
- PROPERTY LINE
- FFL FIRST FLOOR ELEVATION
- USF UNDERSIDE OF FOOTING ELEVATION

APPROVED  REFUSED   
THIS \_\_\_ DAY OF \_\_\_, 20\_\_

DON HERWEYER, MCIP, RPP  
MANAGER, DEVELOPMENT REVIEW - SOUTH  
PLANNING, INFRASTRUCTURE & ECONOMIC  
DEVELOPMENT DEPARTMENT, CITY OF OTTAWA



**REVISIONS**

No.	Date	REVISION
4	NOV 17-17	RE-ISSUED FOR APPROVAL
3	OCT 18-17	RE-ISSUED FOR APPROVAL
2	JUN 6-17	ISSUED FOR APPROVAL
1	MAY 12-17	ISSUED FOR REVIEW AND COORDINATION

D. B. GRAY ENGINEERING INC.  
700 Long Point Circle  
Ottawa, Ontario K1T 4E9  
Tel: 613-425-8044  
dbgray@rogers.com

Project  
**PROPOSED  
BOYS AND GIRLS  
RENOVATION**  
1463 PRINCE OF WALES DR  
OTTAWA, ONTARIO

Drawing Title  
**SITE SERVICING  
PLAN**

Engineer's Seal

Drawn D.B.G.  
Horz. Scale  
Vert. Scale  
Date MAR 31-17  
Job 16087

Drawing No.  
**C-1  
of 4**

REFER TO NOTES &  
DETAILS ON DRAWING C-3

D07-12-17-0073

17521