

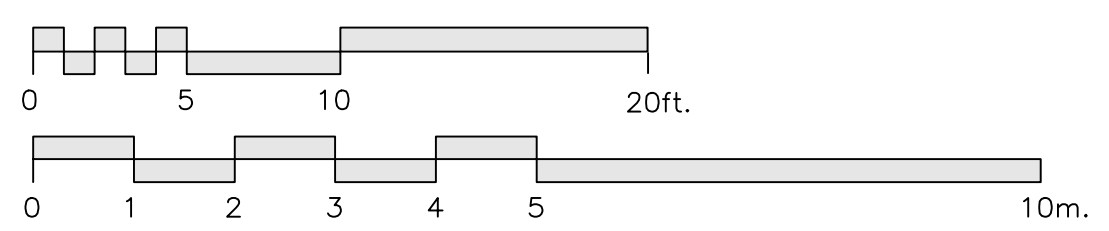
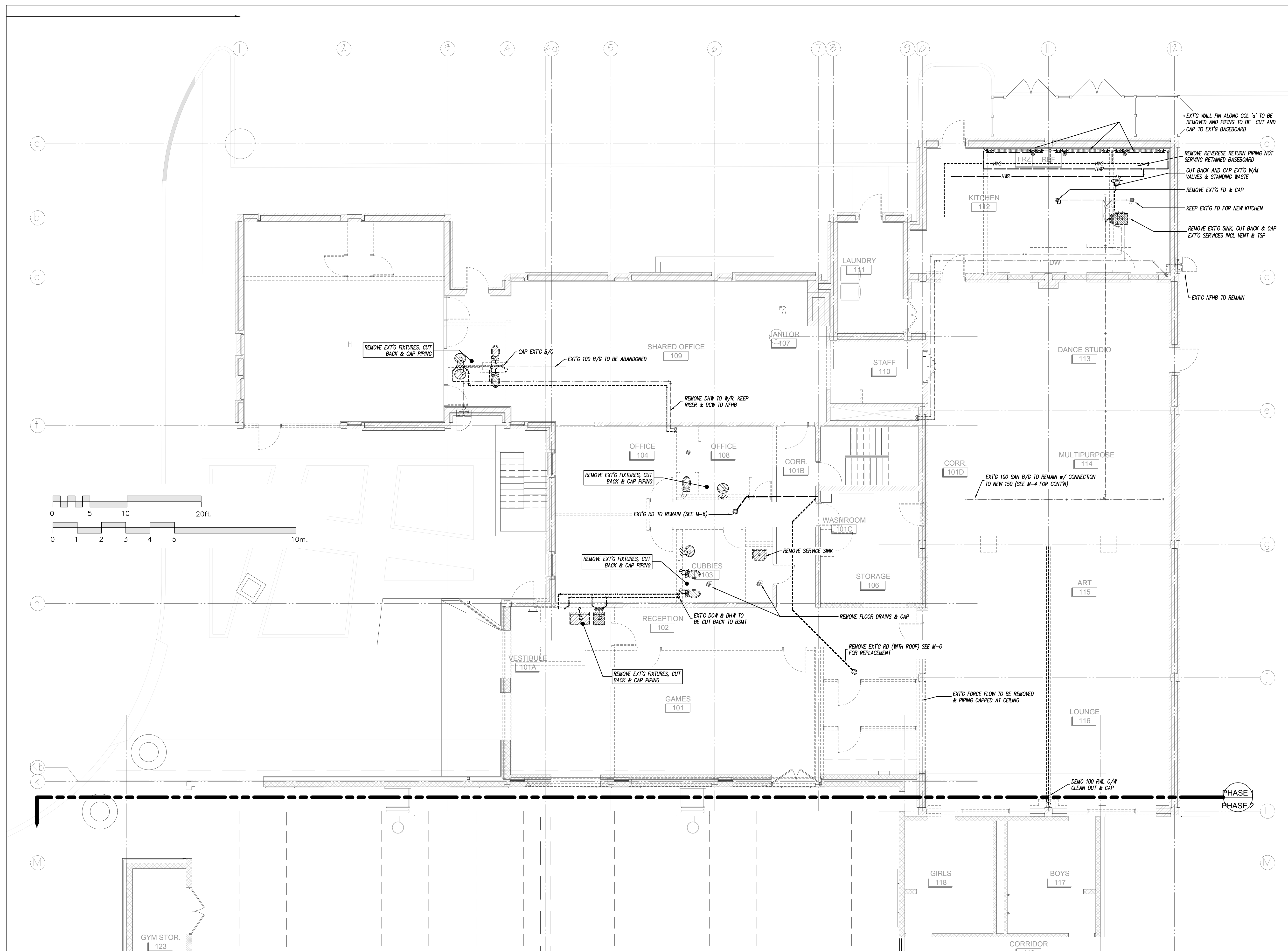
10.		
9.		
8.		
7.		
6.		
5.		
4.	ISSUED FOR TENDER	01-FEB-2018
3.	ISSUED FOR PRICING	22-DEC-2017
2.	ISSUED FOR PHASE II PERMIT	27-OCT-2017
1.	ISSUED FOR PERMIT	2-FEB-18
	(CITY PERMIT NUMBER: ??)	
NO.	REVISIONS	DATE

USE OF THESE DRAWINGS IS RESTRICTED SOLELY TO THE CONSTRUCTION FOR WHICH THEY WERE DEVELOPED. BEKOLAY AND ASSOCIATES LTD. ASSUME NO RESPONSIBILITY FOR ANY SUBSEQUENT USE. DO NOT SCALE THE DRAWINGS BUT RESPECT ANY DIMENSIONS SPECIFICALLY IDENTIFIED IN NOTES OR TEXT. ALL CONTRACTORS MUST VISIT THE SITE AND ARE RESPONSIBLE FOR VERIFYING ANY AND ALL DIMENSIONS THAT RELATE TO THEIR WORK. REPORT ANY DISCREPANCIES IMMEDIATELY TO THE CONSULTANT.

**BEKOLAY & Associates, Ltd.**  
 Consulting Engineers  
 200-1827 WOODWARD DR. OTTAWA  
 ON K1H 3T6 CANADA  
 TEL: 613-735-5400 FAX: 613-735-0884  
 EMAIL: jbe@bekolay.com

7-Oct-14  
 PROJECT: BOYS & GIRLS CLUB RENOVATION  
 Prince of Wales  
 DRAWING: BASEMENT  
 PLUMBING DEMOLITION

DATE: ###  
 SCALE: 1:75  
 DRAWN BY: Staff  
 DESIGNED BY: JRB  
 JOB NO.: 2017-17  
 CHECKED BY:  
 DRAWING NO.: M-2 of 6



10.		
9.		
8.		
7.		
6.		
5.		
4.	ISSUED FOR TENDER	01-FEB-2018
3.	ISSUED FOR PRICING	22-DEC-2017
2.	ISSUED FOR PHASE II PERMIT	27-OCT-2017
1.	ISSUED FOR PERMIT (CITY PERMIT NUMBER: ??)	2-FEB-18
NO.	REVISIONS	DATE

USE OF THESE DRAWINGS IS RESTRICTED SOLELY TO THE CONSTRUCTION FOR WHICH THEY WERE DEVELOPED. BEKOLAY AND ASSOCIATES LTD. ASSUME NO RESPONSIBILITY FOR ANY SUBSEQUENT USE. DO NOT SCALE THE DRAWINGS BUT RESPECT ANY DIMENSIONS SPECIFICALLY IDENTIFIED IN NOTES OR TEXT. ALL CONTRACTORS MUST VISIT THE SITE AND ARE RESPONSIBLE FOR VERIFYING ANY AND ALL DIMENSIONS THAT RELATE TO THEIR WORK. REPORT ANY DISCREPANCIES IMMEDIATELY TO THE CONSULTANT.

**BEKOLAY & Associates. Ltd.**  
 Consulting Engineers  
 200 1627 WOODBINE DR. UTTARA  
 ONTARIO M3J 1K4  
 TEL: 416-291-6676 FAX: 416-291-6684  
 email: jbekolay@beka.com

7-Oct-14

PROJECT **BOYS & GIRLS CLUB RENOVATION**  
 Prince of Wales

DRAWING **GROUND PLUMBING DEMOLITION**

	DATE	###	SCALE	1:75
	DRAWN BY	Staff	DESIGNED BY	JRB
	JOB NO.	2017-17	CHECKED BY	
	DRAWING NO.			

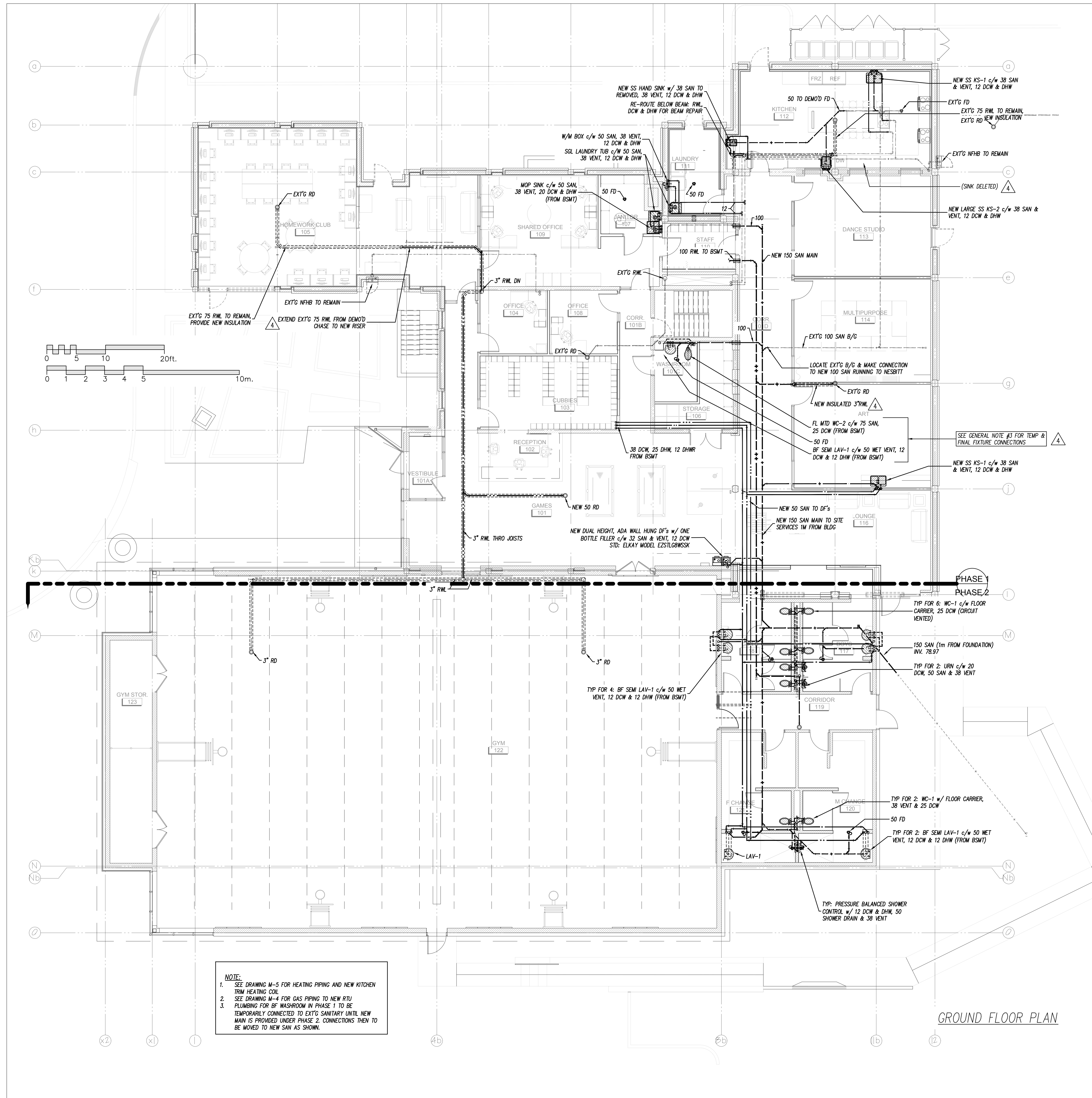




**SPECIFICATIONS CONT'D:**

**Plumbing & Piping:**

23. Plumbing Fixtures:
- 1. Lavatories L-1:
    - (a) Semi-counter vitreous china, universal design, wall-hung sink meeting the requirements for barrier free design c/w insulated trap or knee guard.
    - i Std: American Std. Mezzo
    - (b) Trim: 1.9 L/min chrome plated, battery operated electronic faucet, single faucet, adjustable sensor set point, 90 second max run time and aerator. Provide chrome plated waste strainer, trap with cleanout.
    - i Std: Delta Model HDF commercial DEMD 111F Series or Wattec Moen equivalents
  - 2. SS Sinks
    - (a) KS-1
      - i Double bowl 18-8 stainless steel, 840x560x180mm (33"x22 1/4"x7"), ledge back, kitchen sink with overflow partition, 380x430 (15x17) bowls, basket strainers, rim seal, brass trap with cleanout
      - ii Std: Kindred, Steel Queen EDL2233
    - (b) KS-2
      - i Single bowl, 400x350x180mm (16"x14"x7") stainless steel, ledge back, kitchen sinks with strainer, trap and single lever kitchen faucet
      - ii Std: Kindred, Steel Queen LBS4607
    - (c) Hand Sink
      - i Single bowl (bar sink) 285x235x152mm (11.625x9.25"x6") stainless steel, ledge back, kitchen sinks complete with strainer, trap
      - ii Std: Kindred, Steel Queen LBS9106 with Chicago Faucet 2300-8 Trim
    - (d) Trim: Single lever (barrier free compliant), stainless steel and brass construction chrome finish, pressure balanced replaceable cartridge with integral pull out spray head, high arching spout equal to Delta model 472
  - 3. Water closets
    - (a) Seat: white, open front, molded plastic (with slow close cover for handicapped) and stainless steel check hinge and insert post. Centoco 500 (or 820) or equivalent.
    - (b) 1/2" Chrome plated angle ball valve with chrome nipple & wall escutcheon, braided stainless steel flexible supply.
    - (c) WC-1:
      - i ADA compliant wall hung vitreous china elongated bowl with 4.2 Lpf, with floor carrier
      - ii Std: American Std: Afiwall "FluWise"
    - (d) WC-2
      - i ADA compliant floor mounted vitreous china elongated bowl with 4.2 Lpf
      - ii Std: American Std.
    - (e) Flush Valve:
      - i 4.2 Lpf hard wired A/C powered dual flush with hands free sensor & electronics and manual flush c/w 120 V transformer, wall flange, angle stop w/ BFP, vandal resistant covers, chrome finish
      - ii Std: American Std: Electronic FluWise Exposed
  - 4. Service Sink:
    - (a) Crane 6-296 enamelled steel single compartment Laundry Tub
    - (b) Baked enamel stand
    - (c) C-5040 rough brass trim and trap
  - 5. Map Sink:
    - (a) Moulded stone, 550x450x300mm deep complete with cast brass outlet strainer, stainless steel rim guard, continuous on three sides, bolted to the rim
    - (b) Std: American Std. AB-7692-0230, Crane 7-525, Fiat TSB-100
    - (c) Trim:
      - i Built-in elevated vacuum breaker, cast brass spout, 400mm long rubber hose, indexed cross handles, escutcheons, union inlets, heavy cast brass spout with pull hook, braced to the wall, integral stop valves
      - ii Std: Cambridge Brass S314333, Crane CH-8560, Emco 390 XXBE, Fiat 830 AA, Chicago Faucet
  - 6. Floor drains:
    - (a) General duty, round cast iron body, adjustable head and nickel bronze strainer.
    - (b) Std: Ancon FD-100 or equal
24. DHW Re-Circulation Pump
- 1. Stainless steel body, cartridge type pump with, built in check
  - 2. Capacity: 5 GPM @ 20ft
  - 3. Electrical: 120V/60 w/ 24 hour timer/aquastat combination, and plug in cord.
  - 4. Std: Taco 009-IFC w/ Timer Aquastat.
25. Natural Gas Piping
- 1. Provide natural gas piping from Enbridge meter to building gas fired equipment.
  - 2. Conform to Ontario gas Utilization Code B149. (current version) including installation and testing.
3. Piping:
- (a) Schedule 40 black iron
    - i complete with lubricated isolating valves and malleable iron fittings for exposed installation and welded fittings for ceiling or concealed installation.
    - ii Painting: Clean and epoxy prime paint bare piping followed by two coats of enamel.
4. Roof pipe supports:
- (a) UV resistant injection moulded polypropylene impact copolymer shell and type 3 extruded polyethylene non-marring base pipe supports.
  - (b) Clear gravel below support and securely fasten pipe with non ferrous hardware.
  - (c) Std: E-2 Sleeper/Quick Block
26. Heating:
- 1. Piping: Sch. 40 black with M screwed fittings
  - 2. Coil:
    - (a) 2 row copper tube, aluminum fin
    - (b) Cap. = 75F, LAT= 125 F, APD= 0.15" Wg  
20 MBH, EW=175F. LWT= 155F
  - 3. Control: low voltage wall mounted t'stat with 2-way control valve
27. Unit Heaters:
- 1. Direct drive, propeller, horizontal unit heater with copper tube, aluminum fin coils, line voltage thermostats
  - 2. Capacity: 18 MBH w/ 15TDT, 2.5 GPM EWT 180F, 0.04 Ft WPD
  - 3. Electrical: totally enclosed motors -1/20 HP, 110V w/ line voltage t'stat
  - 4. Std: Trand 36S
28. Fire Extinguishers
- 1. Recessed, prime coated steel cabinet with 25mm return, glass window in the latched door at each fire exit.
  - 2. Extinguisher ABC-5
  - 3. Std: National Fire Equipment Ltd. Model 102
30. Unit Heaters:
- 1. Direct drive, propeller, horizontal unit heater with copper tube, aluminum fin coils, line voltage thermostats
  - 2. Capacity: 20 MBH w/ 16 GPM 50-50 glycol, EWT 140F, 4 Ft Pressure drop
  - 3. Electrical: totally enclosed motors -1/20 HP, 110V
  - 4. Std: Trand 80S



**NOTE:**

1. SEE DRAWING M-5 FOR HEATING PIPING AND NEW KITCHEN TRIM HEATING COIL
2. SEE DRAWING M-4 FOR GAS PIPING TO NEW RTU
3. PLUMBING FOR BF WASHROOM IN PHASE 1 TO BE TEMPORARILY CONNECTED TO EXT'G SANITARY UNTIL NEW MAIN IS PROVIDED UNDER PHASE 2. CONNECTIONS THEN TO BE MOVED TO NEW SAN AS SHOWN.

GROUND FLOOR PLAN

NO.	REVISIONS	DATE
10.		
9.		
8.		
7.		
6.		
5.		
4.	ISSUED FOR TENDER	01-FEB-2018
3.	ISSUED FOR PRICING	22-DEC-2017
2.	ISSUED FOR PHASE II PERMIT	27-OCT-2017
1.	ISSUED FOR PERMIT	2-FEB-18
	(CITY PERMIT NUMBER: ??)	

USE OF THESE DRAWINGS IS RESTRICTED SOLELY TO THE CONSTRUCTION FOR WHICH THEY WERE DEVELOPED. BEKOLAY AND ASSOCIATES LTD. ASSUME NO RESPONSIBILITY FOR ANY SUBSEQUENT USE. DO NOT SCALE THE DRAWINGS BUT RESPECT ANY DIMENSIONS SPECIFICALLY IDENTIFIED IN NOTES OR TEXT. ALL CONTRACTORS MUST VISIT THE SITE AND ARE RESPONSIBLE FOR VERIFYING ANY AND ALL DIMENSIONS THAT RELATE TO THEIR WORK. REPORT ANY DISCREPANCIES IMMEDIATELY TO THE CONSULTANT.

**BEKOLAY & Associates Ltd.**  
 Consulting Engineers  
 200-187 WOODBINE DR. OTTAWA  
 ON K1H 3S7 CANADA TEL: 613-238-0866  
 email: bekolay@beka.com

7-Oct-14

PROJECT: **BOYS & GIRLS CLUB RENOVATION**  
 Prince of Wales

DRAWING: **GROUND PLUMBING MODIFICATIONS**

DATE	###	SCALE
2-Feb-18	J.R. BEKOLAY	1:100
2017-17	Staff	DESIGNED BY: JRB
		CHECKED BY:
		DRAWING NO.