



SUPPLEMENTAL INSTRUCTION

CONTRACTOR:
Tal-co Building Innovations
Address:
Suite 2, 1341 Coker Street
Greely, Ontario, K4P 1A1

PROJ.: **Boys and Girls Club Prince of Wales**
PROJ. No.: **1716**
DATE: **Mar 23, 2018**
S.I. No. **S.I. - 020**

Supplemental Instructions are issued to the Construction Manager to record a clarification or revision to the previously issued Contract Documentation as reflected by the attached Information Bulletin prepared by the identified Consultant.

The Construction Manager shall review the Supplemental Instruction and the attached Information Bulletin and issue to the effected Trade Contractors identifying the following course of action by the trade contractor:

- Proceed with Instruction. Issued for general information, no change to Contract price or schedule. (Site Instruction)
- Proceed with Instruction and provide a quotation within 10 days, identifying change to Contract price and schedule (Change Directive)
- Do not proceed. Provide quotation identifying change to Contract price and schedule within 10 days. (CCO)

Partners

Barry J. Hobin
OAA, FRAIC, Hon. Fellow AIA

William A. Davis
OAA, MRAIC, Associate AIA

Gordon Lorimer
OAA, FRAIC, Associate AIA

Wendy Brawley
OAA, MRAIC, Associate AIA

Douglas Brooks
Senior Arch. Tech.

Associates

Bryan Bonell
OAA, MRAIC, Associate AIA

Marc Thivierge
OAA, MRAIC

William Ritcey
MRAIC

Reinhard Vogel
Senior Arch. Tech.

1.1 TITLE

Adjustment to Roof Drains on new roof areas

1.2 DESCRIPTION OF THE WORK

.1 Provide flow controlled roof drains on Gymnasium and Changeroom roofs as per attached Mechanical Instruction.

1.3 ATTACHMENTS

B&G SI-01 RWL 2018-03-23 including revised mechanical drawing M-6

1.4 REASON

To provide clarification on locations and specification of flow controlled roof drains.

Hobin Architecture Incorporated

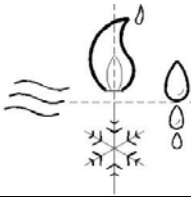
63 Pamilla Street
Ottawa, Ontario
Canada K1S 3K7

t 613-238-7200
f 613-235-2005

hobinarc.com

Distribution:

- | | | | | |
|--|--|---|----------------------------------|--------------------------------------|
| <input checked="" type="checkbox"/> Owner | <input type="checkbox"/> City Authority | <input type="checkbox"/> Electrical | <input type="checkbox"/> Struct. | <input type="checkbox"/> Landscaping |
| <input checked="" type="checkbox"/> Contractor | <input checked="" type="checkbox"/> File | <input checked="" type="checkbox"/> Mech. | <input type="checkbox"/> Civil | <input type="checkbox"/> Other |



Site Instruction

Project: **Boys & Girls Club P.O.W.**
1463 Prince of Wales

Project No.: **2017-17**
Issued By: **M. Grondin**

Desc.: **Rain Water Leaders – Change room/ games room**

SI No.: **MSI-01**

To: **Barry J. Hobin & Associates Architects**
63 Pamilla St. Ottawa On. K1S 3K7

Att: **Doug van den Ham**
Sandy Davis

Date: **2018-03-23**

The following instruction(s) is issued as a clarification to the contract or as required based on site conditions. Comply with performance standards of the contract documents.

The following is issued due to site conditions

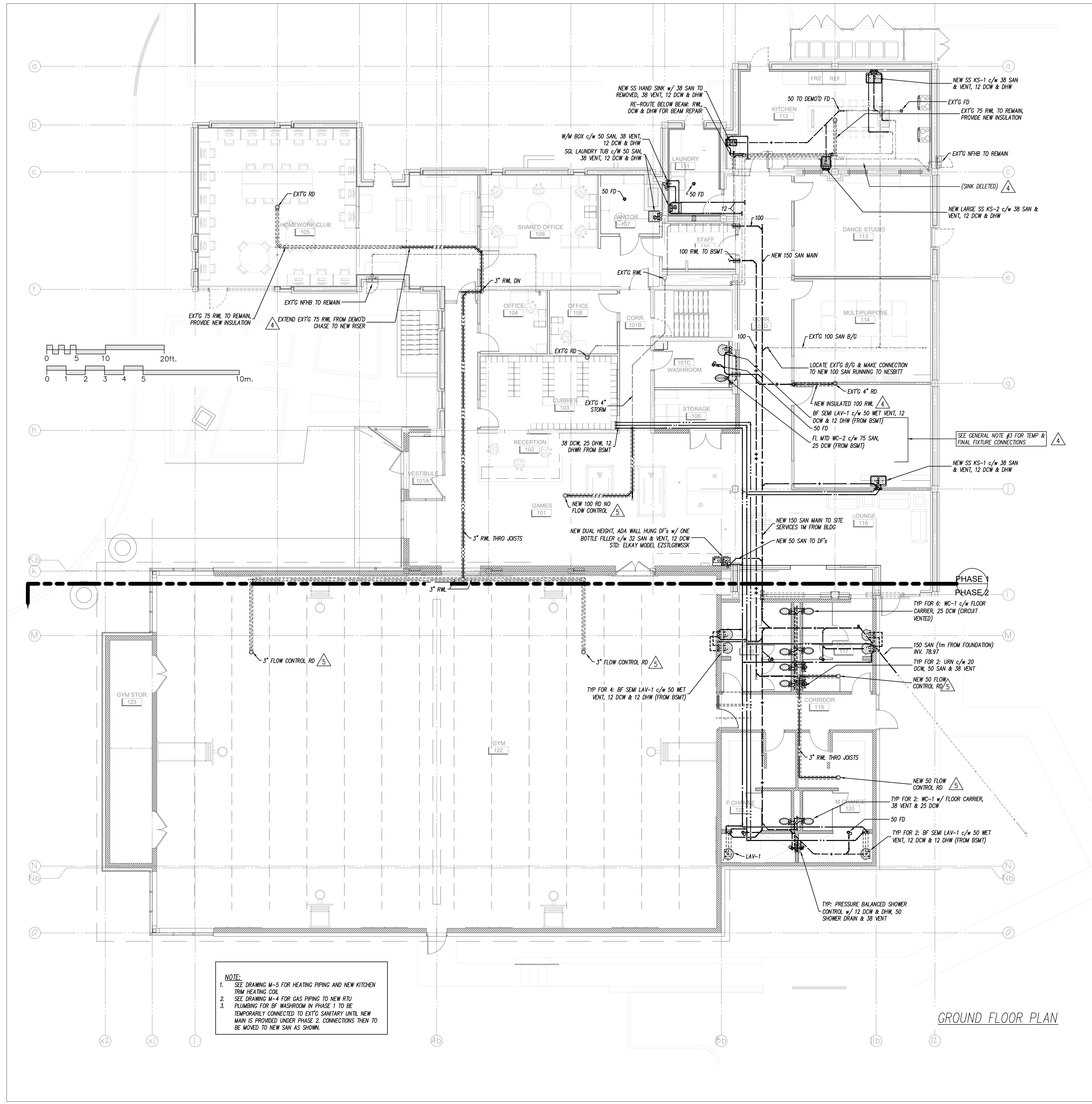
M-6 of 6 Rev 5, 23-MARC-2018

1. Change room Roof Drains
 - a. Provide 1 additional 50mm (2") roof drain for a total of 2
 - b. Roof Drains to be Flow control
2. Gym Roof Drains
 - a. As designed, 2- 75mm (3") roof drains
 - b. Roof Drains to be Flow Control
3. Games Room Roof Drain
 - a. Provide 100mm (4")
 - b. Roof Drain not to be Flow Controlled
 - c. Connect to existing storm drain above corridor 101B

SPECIFICATIONS CONT'D:

Plumbing & Piping:

23. Plumbing Fixtures:
1. Lavatories L-1:
 - (a) Semi-counter vitreous china, universal design, wall-hung sink meeting the requirements for barrier free design c/w insulated trap or knee guard.
 - i Std: American Std. Mezzo
 - (b) Trim: 1.9 L/min chrome plated, battery operated electronic faucet, single faucet, adjustable sensor set point, 90 second max run time and aerator. Provide chrome plated waste strainer, trap with cleanout.
 - i Std: Delta Model HDF commercial DEMD 111F Series or Wallec Moen equivalents
 2. SS Sinks
 - (a) KS-1
 - i Double bowl 18-8 stainless steel, 840x560x180mm (33"x22 1/4"x7"), ledge back, kitchen sink with overflow partition, 380x430 (15x17) bowls, basket strainers, rim seal, brass trap with cleanout
 - ii Std: Kindred, Steel Queen EDL2233
 - (b) KS-2
 - i Single bowl, 400x350x180mm (16"x14"x7") stainless steel, ledge back, kitchen sinks with strainer, trap and single lever kitchen faucet
 - ii Std: Kindred, Steel Queen LBS4607
 - (c) Hand Sink:
 - i Single bowl (bar sink) 285x235x152mm (11.625x9.25"x6") stainless steel, ledge back, kitchen sinks complete with strainer, trap
 - ii Std: Kindred, Steel Queen LBS9106 with Chicago Faucet 2300-8 Trim
 - (d) Trim: Single lever (barrier free compliant), stainless steel and brass construction chrome finish, pressure balanced replaceable cartridge with integral pull out spray head, high arching spout equal to Delta model 472
 3. Water closets
 - (a) Seat: white, open front, molded plastic (with slow close cover for handicapped) and stainless steel check hinge and insert post. Centoco 500 (or 820) or equivalent.
 - (b) 1/2" Chrome plated angle ball valve with chrome nipple & wall escutcheon, braided stainless steel flexible supply.
 - (c) WC-1:
 - i ADA compliant wall hung vitreous china elongated bowl with 4.2 Lpf, with floor carrier
 - ii Std: American Std: AfaWall "Flowise"
 - (d) WC-2
 - i ADA compliant floor mounted vitreous china elongated bowl with 4.2 Lpf
 - ii Std: American Std.
 - (e) Flush Valve:
 - i 4.2 Lpf hard wired A/C powered dual flush with hands free sensor & electronics and manual flush c/w 120 V transformer, wall flange, angle stop w/ BFP, vandal resistant covers, chrome finish
 - ii Std: American Std: Electronic Flowise Exposed
 4. Service Sink:
 - (a) Crane 6-296 enamelled steel single compartment Laundry Tub
 - (b) Baked enamel stand
 - (c) C-5040 rough brass trim and trap
 5. Map Sink:
 - (a) Moulded stone, 550x450x300mm deep complete with cast brass outlet strainer, stainless steel rim guard, continuous on three sides, bolted to the rim
 - (b) Std: American Std. AB-7692-0230, Crane 7-525, Fiat TSB-100
 - (c) Trim:
 - i Built-in elevated vacuum breaker, cast brass spout, 400mm long rubber hose, indexed cross handles, escutcheons, union inlets, heavy cast brass spout with pull hook, braided to the wall, integral stop valves
 - ii Std: Cambridge Brass S314333, Crane CH-8560, Emco 390 XXBE, Fiat 830 AA, Chicago Faucet
 6. Floor drains:
 - (a) General duty, round cast iron body, adjustable head and nickel bronze strainer.
 - (b) Std: Ancan FD-100 or equal
24. DHW Re-Circulation Pump
1. Stainless steel body, cartridge type pump with, built in check
 2. Capacity: 5 GPM @ 20ft
 3. Electrical: 120V/1/60 w/ 24 hour timer/aquastat combination, and plug in cord.
 4. Std: Taco 009-IFC w/ Timer Aquastat.
25. Natural Gas Piping
1. Provide natural gas piping from Enbridge meter to building gas fired equipment.
 2. Conform to Ontario gas Utilization Code B149. (current version) including installation and testing.
3. Piping:
- (a) Schedule 40 black iron
 - i complete with lubricated isolating valves and malleable iron fittings for exposed installation and welded fittings for ceiling or concealed installation.
 - ii Painting: Clean and epoxy prime paint bare piping followed by two coats of enamel.
 4. Roof pipe supports:
 - (a) UV resistant injection moulded polypropylene impact copolymer shell and type 3 extruded polystyrene non-marring base pipe supports.
 - (b) Clear gravel below support and securely fasten pipe with non ferrous hardware.
 - (c) Std: E-2 Sleeper/Quick Block
26. Heating:
1. Piping: Sch. 40 black with M screwed fittings
 2. Coil:
 - (a) 2 row copper tube, aluminum fin
 - (b) Cap. = 75F, LAT= 125 F, APD= 0.15" Wg
20 MBH, EWT=175F, LWT= 155F
 3. Control: low voltage wall mounted tstat with 2-way control valve
27. Unit Heaters:
1. Direct drive, propeller, horizontal unit heater with copper tube, aluminum fin coils, line voltage thermostats
 2. Capacity: 18 MBH w/ 15TDT, 2.5 GPM EWT 180F, 0.04 Ft WPD
 3. Electrical: totally enclosed motors -1/20 HP, 110V w/ line voltage t'stat
 4. Std: Trand 365
28. Fire Extinguishers
1. Recessed, prime coated steel cabinet with 25mm return, glass window in the latched door at each fire exit.
 2. Extinguisher ABC-5
 3. Std: National Fire Equipment Ltd. Model 102
30. Unit Heaters:
1. Direct drive, propeller, horizontal unit heater with copper tube, aluminum fin coils, line voltage thermostats
 2. Capacity: 30 MBH w/ 16 GPM 50-50 glycol, EWT 140F, 4 Ft Pressure drop
 3. Electrical: totally enclosed motors -1/20 HP, 110V
 4. Std: Trand 605



NOTE:

1. SEE DRAWING M-5 FOR HEATING PIPING AND NEW KITCHEN FROM HEATING COIL
2. SEE DRAWING M-4 FOR GAS PIPING TO NEW RTU
3. PLUMBING FOR BF WASHROOM IN PHASE 1 TO BE TEMPORARILY CONNECTED TO EXT'G SANITARY UNTIL NEW MAIN IS PROVIDED UNDER PHASE 2. CONNECTIONS THEN TO BE MOVED TO NEW SAN AS SHOWN.

GROUND FLOOR PLAN

| NO. | REVISIONS | DATE |
|-----|---|-------------|
| 10. | | |
| 9. | | |
| 8. | | |
| 7. | | |
| 6. | | |
| 5. | ISSUED FOR MSI-01 | 23-MAR-2018 |
| 4. | ISSUED FOR TENDER | 01-FEB-2018 |
| 3. | ISSUED FOR PRICING | 22-DEC-2017 |
| 2. | ISSUED FOR PHASE II PERMIT | 27-OCT-2017 |
| 1. | ISSUED FOR PERMIT (CITY PERMIT NUMBER: ??) | 23-MAR-18 |

USE OF THESE DRAWINGS IS RESTRICTED SOLELY TO THE CONSTRUCTION FOR WHICH THEY WERE DEVELOPED. BEKOLAY AND ASSOCIATES LTD. ASSUME NO RESPONSIBILITY FOR ANY SUBSEQUENT USE. DO NOT SCALE THE DRAWINGS BUT RESPECT ANY DIMENSIONS SPECIFICALLY IDENTIFIED IN NOTES OR TEXT. ALL CONTRACTORS MUST VISIT THE SITE AND ARE RESPONSIBLE FOR VERIFYING ANY AND ALL DIMENSIONS THAT RELATE TO THEIR WORK. REPORT ANY DISCREPANCIES IMMEDIATELY TO THE CONSULTANT.

BEKOLAY & Associates Ltd.
 Consulting Engineers
 200-187 WOODBINE DR., OTTAWA
 ON K2H 1P7 CANADA TEL: 613-238-0866
 email: bekolay@bga.ca

7-Oct-14

PROJECT: **BOYS & GIRLS CLUB RENOVATION**
 Prince of Wales

DRAWING: **GROUND PLUMBING MODIFICATIONS**

| DATE | SCALE |
|-----------------|------------------|
| 2018-03-23 | 1:100 |
| DRAWN BY: Staff | DESIGNED BY: JRB |
| JOB NO: 2017-17 | CHECKED BY: |
| DRAWING NO. | |

