

GENERAL NOTES:

- ALL PRODUCTS PROVIDED BY CANAM GROUP Inc. IN CONNECTION WITH THIS DRAWING ARE SUBJECT TO CANAM GROUP Inc. STANDARD TERMS AND CONDITIONS FOR JOIST SALES. BY ACCEPTING THE PRODUCT, THE PURCHASER ACKNOWLEDGES THAT THEY HAVE RECEIVED AND REVIEWED THESE TERMS AND CONDITIONS.
- MINIMUM DESIGN REQUIREMENTS TO BE PER CAN/CSA S16.0 STANDARD (AND CSSBI SPECIFICATION WHEN DECK IS SUPPLIED BY CANAM GROUP Inc.) LATEST EDITION, UNLESS OTHERWISE NOTED HEREIN.
- PAINT: GREY PRIMER U.N.O. ON PLAN (SPECIFICATIONS PROVIDED UPON REQUEST)
- THE ISSUANCE OF THIS DRAWING DOES NOT CONSTITUTE THE ACCEPTANCE OF A CUSTOMER'S ORDER.
- THE DESIGN IS BASED UPON LOAD INFORMATION SPECIFICALLY SUBMITTED TO CANAM GROUP Inc. NO SPECIAL LOADS OR OTHER FORCES HAVE BEEN PROVIDED FOR UNLESS PURCHASER HAS REQUESTED THEM IN WRITING. SUCH SPECIAL LOADS OR OTHER FORCES SHALL INCLUDE, WITHOUT LIMITATION: UPLIFT, CONCENTRATED LOADS FROM ROOF TOP UNITS, AXIAL LOADS FROM KICKER ANGLES, ETC.
- CANAM GROUP Inc. ERECTION DRAWINGS HEREIN WERE PREPARED USING THE STRUCTURAL PORTION OF THE CONTRACT DRAWINGS AS ITS PRIMARY GUIDE USING THE ARCHITECTURAL DRAWINGS (WHEN PROVIDED) ONLY FOR MISSING INFORMATION OR FOR CLARIFICATION. CANAM GROUP Inc. DOES NOT ACCEPT ANY RESPONSIBILITY FOR DISCREPANCIES BETWEEN THE STRUCTURAL AND ARCHITECTURAL DRAWINGS.

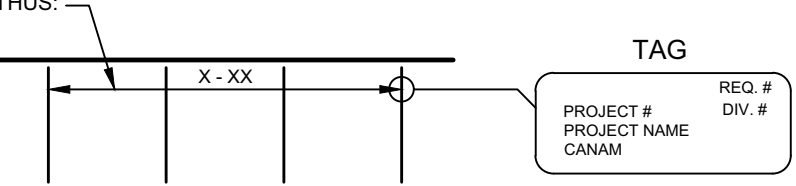
CONTRACTOR NOTES:

- OWSJ TOP CHORDS AND SEAT WIDTHS MAY VARY.
- FOR A COMPLETE PACKAGE OF CANAM GROUP Inc. STANDARDS & CONNECTION DETAILS GO TO www.canamgroupinc.com OR CONTACT YOUR CANAM GROUP Inc. OFFICE.
- CONFIRM ALL JOIST SHOE DEPTHS WITH CANAM GROUP Inc. PRIOR TO DETAILING OF SUPPORTING STEEL.
- REVIEW ENCLOSED LAYOUT FOR CONFORMANCE AND CONNECTION METHODS. INFORM CANAM GROUP Inc. OF ANY UNEXPECTED CONNECTION DETAILS OR DIMENSIONAL DISCREPANCIES TO ENSURE AS BUILT CONDITIONS ARE SATISFIED.
- CONTRACTOR TO CONFIRM OR SUPPLY ALL CLOUDED INFORMATION WHERE SHOWN ON PLAN.

APPROVAL NOTES: (IF APPLICABLE)

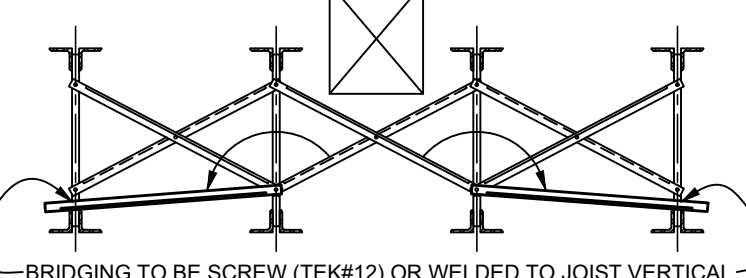
- PLEASE REVIEW THESE DRAWINGS CAREFULLY, IT REPRESENTS OUR INTERPRETATION OF THE CONTRACT DOCUMENTS.
- THE GENERAL CONTRACTOR IS TO INFORM CANAM GROUP Inc. OF ANY INTERFERENCE BETWEEN MECHANICAL UNITS, DUCTWORK AND JOIST BRIDGING.
- SUBSEQUENT CHANGES TO INFORMATION SHOWN ON THESE DRAWINGS AFTER FIRST SUBMISSION COULD BE CONSIDERED AS CONTRACT CHANGES. IF CONSIDERED A CONTRACT CHANGE THE ARCHITECT / ENGINEER SHOULD BE INFORMED IN WRITING.
- UNLESS NOTED TO THE CONTRARY ON THESE DRAWINGS WHEN RETURNED FROM APPROVAL, IT WILL BE CONSIDERED THAT THE INFORMATION SHOWN HEREIN HAS BEEN ACCEPTED BY ALL PARTIES.
- TO MEET DELIVERY REQUIREMENTS THIS PROJECT WILL BE ISSUED FOR FABRICATION WITH THIS RETURNED APPROVAL. JOIST REINFORCING OR ADDITIONAL MATERIAL REQUIRED DUE TO MISSING LOADS SUCH AS MECHANICAL UNITS AND SPRINKLER INFORMATION RECEIVED AFTER ISSUE FOR FABRICATIONS WILL BE CONSIDERED AT OWNERS EXPENSE.
- APPROVER TO CONFIRM OR SUPPLY ALL CLOUDED INFORMATION WHERE SHOWN ON PLAN.
- ESFR SPRINKLER SYSTEMS - DOCUMENTS INCLUDING DIMENSIONED LOCATIONS OF ALL SPRINKLER LINES TO BE PROVIDED TO CANAM GROUP Inc. TO ENSURE INTERFERENCE REQUIREMENTS ARE RESPECTED. IF THIS CANNOT BE PROVIDED WHEN FABRICATION COMMENCES, CANAM GROUP Inc. WILL PROVIDE THE REQUIRED DOCUMENTS SHOWING THE EXACT LOCATIONS OF ALL MEMBERS INCLUDED.

ERECTOR NOTES:

- THIS DRAWING IS TO BE USED ONLY FOR THE ERECTION OF PRODUCTS SUPPLIED BY CANAM GROUP Inc. AS INDICATED BY AN ERECTION MARK ON THE PLANS AND/OR SECTIONS.
- CANAM GROUP Inc. IS NOT RESPONSIBLE FOR THE HANDLING AND ERECTION OF MATERIALS IT SUPPLIES. THE DESIGN AND MANUFACTURE OF THE MATERIALS ASSUMES THAT THEY ARE HANDLED IN ACCORDANCE WITH ALL APPLICABLE LAWS AND REGULATIONS. CANAM GROUP Inc. IS NOT RESPONSIBLE FOR ANY MISHANDLING OR FAILURE TO PROPERLY ERECT THE MATERIALS.
- CANAM GROUP Inc. HAS NOT EXAMINED ANY FIELD CONDITIONS AND ASSUMES NO RESPONSIBILITY FOR ANY SITE CONDITIONS. THE PURCHASER MUST NOTIFY CANAM GROUP Inc. OF ANY DISCREPANCIES BETWEEN THE FIELD CONDITIONS AND CANAM GROUP Inc. FILE AND FIELD USE DRAWINGS.
- ANY MODIFICATION OF MATERIAL SUPPLIED BY CANAM GROUP Inc. WITHOUT PRIOR WRITTEN CONSENT WILL AUTOMATICALLY RELEASE CANAM GROUP Inc. FROM ALL LIABILITY WITH RESPECT TO SUCH MATERIAL.
- OWSJ MUST BE PERMANENTLY FASTENED IN PLACE AND BRIDGING ATTACHED BY WELDING OR BOLTING AS SHOWN BEFORE ANY CONSTRUCTION LOADS ARE APPLIED. ALL FIELD WELDING TO BE CARRIED OUT BY WELDERS APPROVED BY C.W.B. TO THE REQUIREMENTS OF C.S.A. W47 AND W59
- BOLTED CONNECTIONS (BRIDGING AND JOISTS) SHALL BE "SNUG TIGHT". THE 2004 RCSC SPECIFICATION DEFINES IT AS A JOINT IN WHICH THE BOLTS HAVE BEEN INSTALLED IN ACCORDANCE WITH SECTION 8.1. NOTE THAT NO SPECIFIC LEVEL OF INSTALLED TENSION IS REQUIRED TO ACHIEVE THIS CONDITION, WHICH IS COMMONLY ATTAINED AFTER A FEW IMPACTS OF AN IMPACT WRENCH OR THE FULL EFFORT OF AN IRONWORKER WITH AN ORDINARY SPUD WRENCH. THE PLIES SHOULD BE IN FIRM CONTACT, A CONDITION THAT MEANS THE PLIES ARE SOLIDLY SEATED AGAINST EACH OTHER, BUT NOT NECESSARILY IN CONTINUOUS CONTACT.
- BACK CHARGES FOR REPAIRS OR ALTERATION TO CANAM GROUP Inc. PRODUCTS WILL NOT BE ACCEPTED UNLESS APPROVED PRIOR BY CANAM GROUP Inc.
- JOISTS TO BE ERECTED SO THAT THE METAL TAG AT ONE END CORRESPONDS WITH THE END OF THE JOIST WHERE THE MARK IS LOCATED ON THE PLAN THUS: 

BRIDGING INTERFERENCE/REMOVAL

- REMOVE BRIDGING FROM LOCATION OF DESIRED OPENING.
- RELOCATE REMOVED BRIDGING MEMBERS AS SHOWN BELOW.
- BOLT BRIDGING @ JOIST BOTTOM CHORD NEAR OPENING AND FIX THE OTHER END TO ADJACENT JOIST AS PER PICTURE BELOW.



MAX. JOIST SPACING	MIN. HORIZ. BRIDGING SIZE
≤ 1720 / 5' - 7"	L 1 1/4" x 1 1/4"
≤ 2240 / 7' - 4"	L 1 1/2" x 1 1/2"
≤ 2620 / 8' - 7"	L 1 3/4" x 1 3/4"
≤ 2970 / 9' - 9"	L 2" x 2"

- IF SPACING IS GREATER THAN SHOWN, CONTACT CANAM GROUP Inc.
- SIMILAR CONCEPT TO BE APPLIED FOR WELDED BRIDGING

GENERAL JOIST/GIRDER SHOE INFORMATION:

NOTE: ALL ENCLOSED DETAILS AND INFORMATION MUST BE VERIFIED ON PLAN IF NOTED OTHERWISE. DETAILS ARE INTENDED AS STANDARD BUT MAY VARY WITH SPECIFIC CONTRACTOR, PROJECTS AND/OR CONDITIONS. ANY DISCREPANCIES BETWEEN GENERAL INFORMATION AND THE PLAN, THE PLAN WILL BE CONSIDERED AS CORRECT.

CANAM STANDARD CONNECTION DETAILS

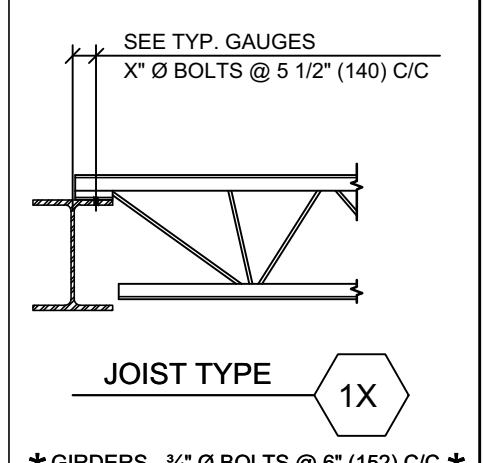
TO ACCESS THE CANAM STANDARD CONNECTION DETAILS, CLICK ON THE FOLLOWING INTERNET LINK OR SCAN THE QR CODE



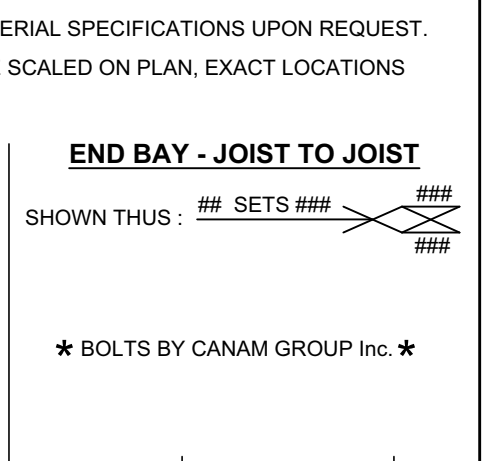
STANDARD GAUGES - CANAM

- WHEN ONE JOIST BEARS AT THE JUNCTION OF TWO DIFFERENT BEAMS, THE SMALLER GAUGE IS TO BE USED.
- DESIGN CONDITIONS CAN DICTATE VARIANCES FOR THESE CONNECTIONS. FOR COORDINATION CONTACT CANAM GROUP Inc.
- USE A325 3/4" Ø BOLTS TYP. U.N.O.

STANDARD WELDED SHOE



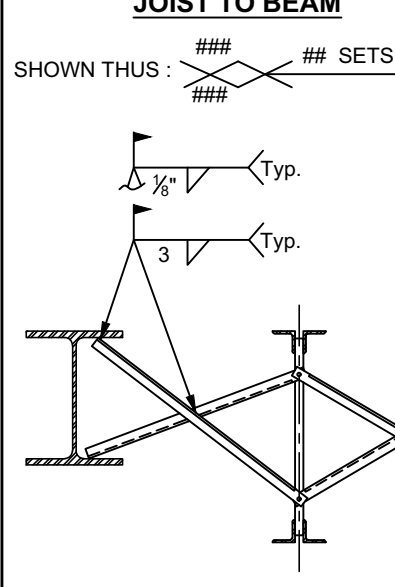
STANDARD BOLTED SHOE



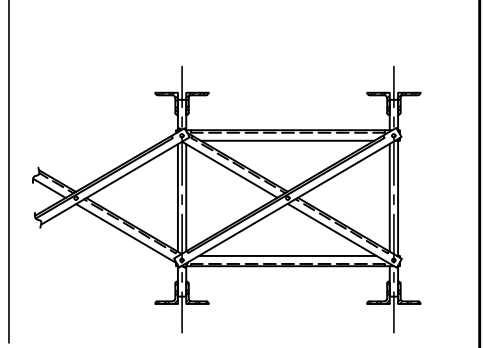
STANDARD BRIDGING DETAILS:

IMPORTANT NOTE: SEE PLAN FOR ADDITIONAL BRIDGING/BRACING DETAILS AND INSTRUCTIONS IF APPLICABLE.

TYP. BOLTED BRIDGING



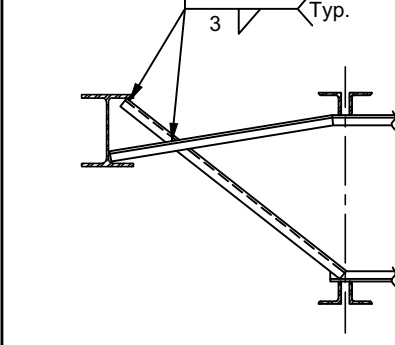
END BAY - JOIST TO JOIST



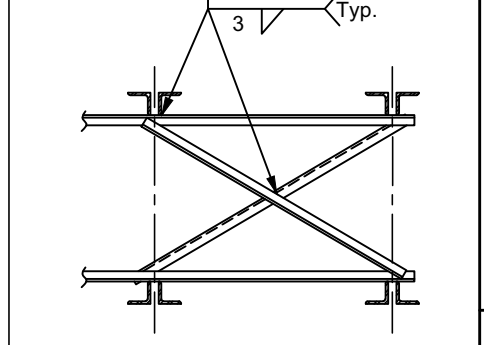
TYP. WELDED HORIZONTAL BRIDGING

- SEE PLAN FOR MATERIAL SIZES AND SPECIFICATIONS.
- SEE PLAN FOR LOCATIONS OF WELDED HORIZONTAL BRIDGING. DO NOT SCALE THE PLAN.
- HORIZONTAL BRIDGING CAN BE REQUIRED ON THE TOP AND/OR BOTTOM CHORDS. SEE PLAN SHOWN THUS: T & B
- BRIDGING SPLICE/LAP TO BE MAXIMUM 100 mm (4").
- QUANTITIES OF HORIZONTAL BRIDGING DETERMINED USING (O/A LENGTH (x) # ROWS) (+ 4%)

JOIST TO BEAM

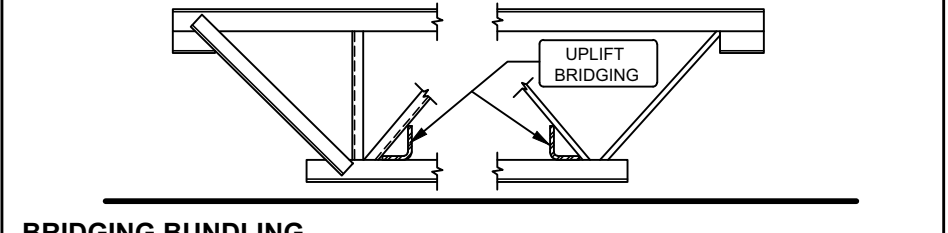


END BAY - JOIST TO JOIST

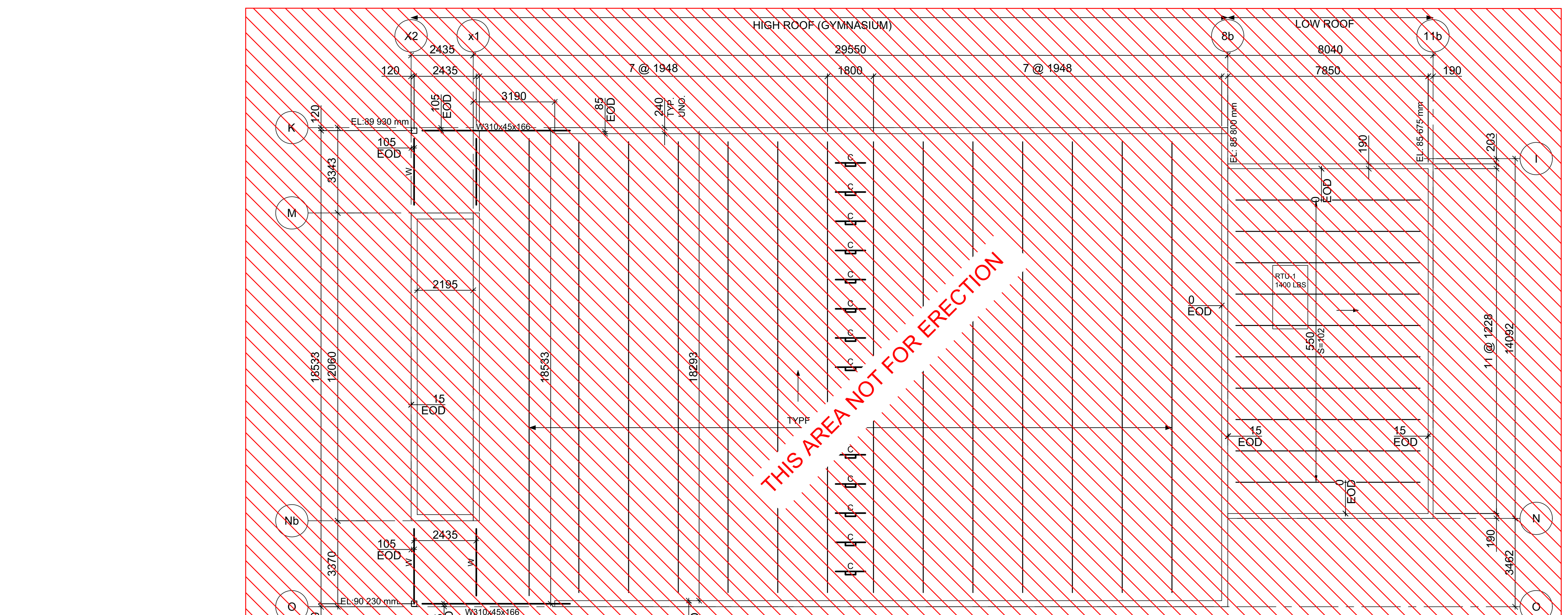
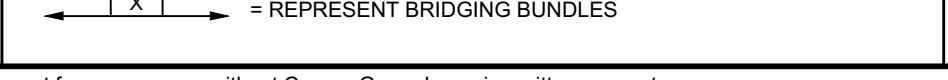


TYP. WELDED HORIZONTAL UPLIFT BRIDGING

- SEE PLAN FOR MATERIAL SIZES AND SPECIFICATIONS.
- SEE PLAN FOR LOCATIONS OF WELDED HORIZONTAL UPLIFT BRIDGING. LOCATED AT FIRST AND LAST PANEL POINTS TYP. U.N.O. ON PLAN.
- FOR INSTALLATION PROCEDURE SEE "TYP. WELDED HORIZONTAL BRIDGING" DETAILS ABOVE AND SUBTRACT TOP ROW EXCEPT AT JOIST TO JOIST END BAYS.

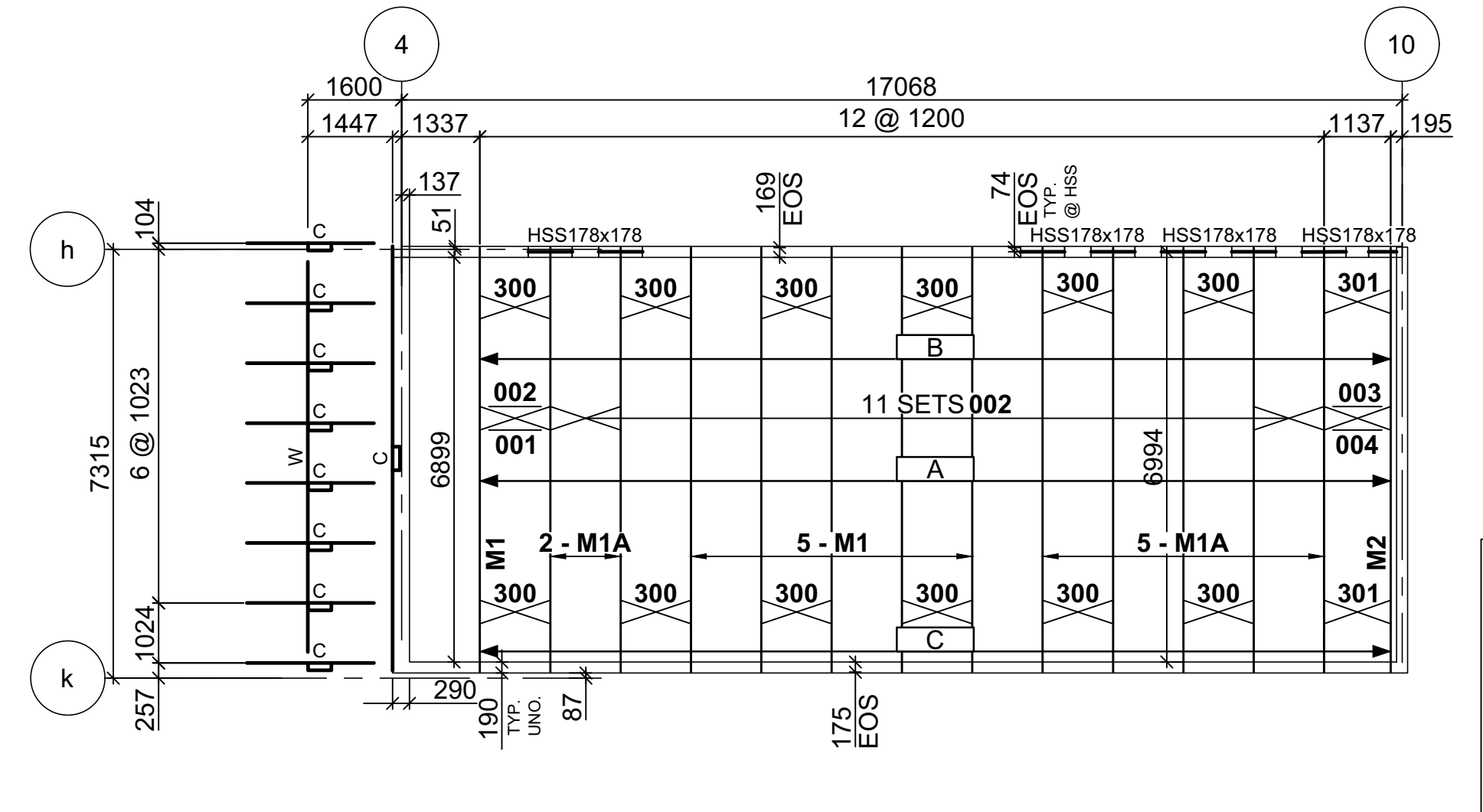
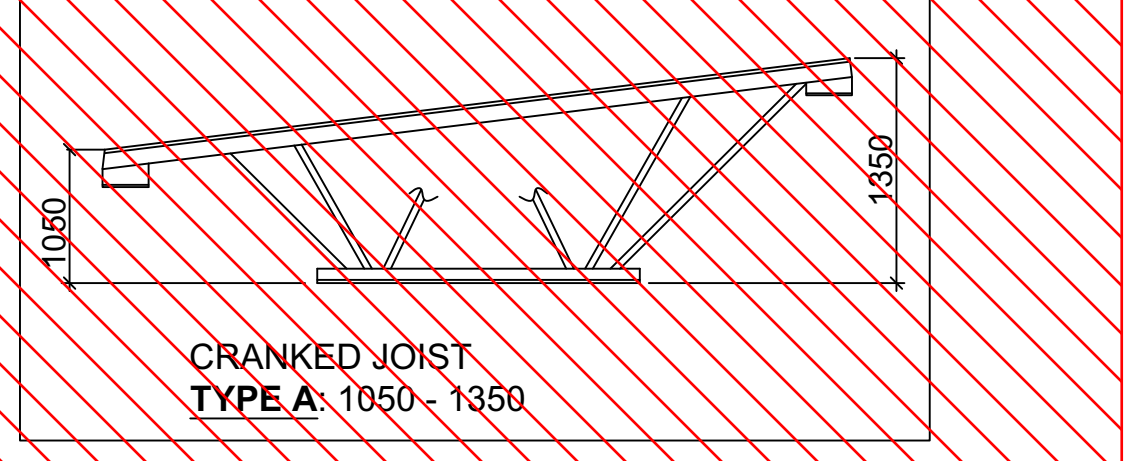


BRIDGING BUNDLING



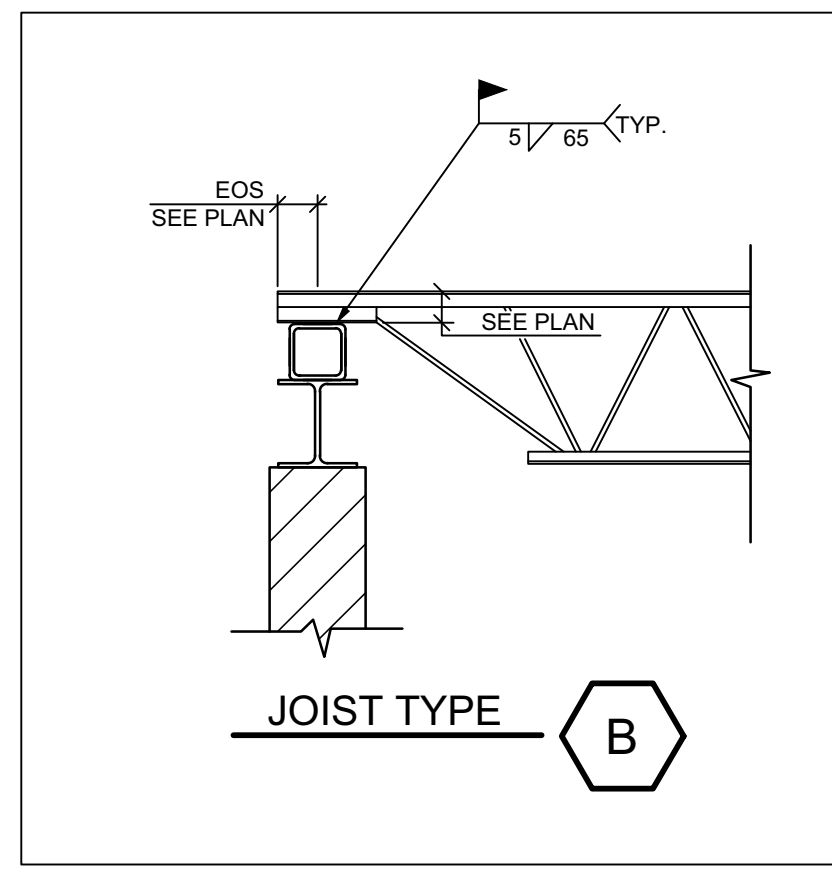
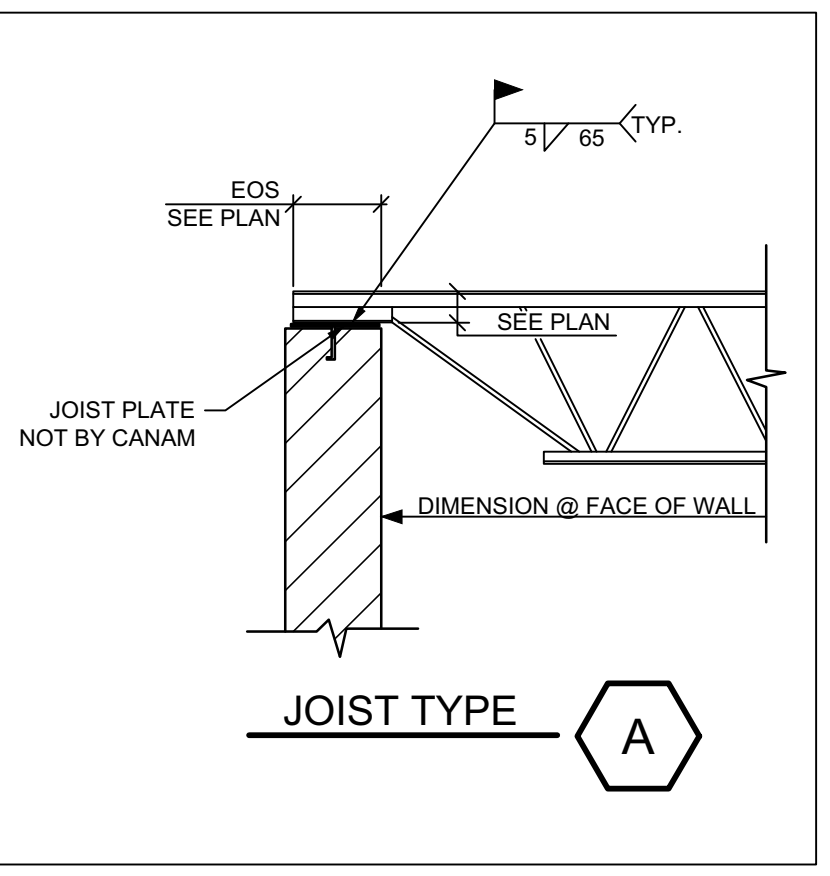
GYM ROOF JOIST FRAMING PLAN (DIV. 02)

- REFERENCE DWG: S102 REV. 2 & E12 REV.0
- U/S DECK ELEVATION: SEE PLAN
 - STANDARD SHOE DEPTH IS 152mm U.N.O.
 - SEE PLAN FOR JOIST DEPTH.
 - JOIST CONNECTION @ WALL IS TYPE (A) TYP.
 - JOIST CONNECTION ON BEAMS IS TYPE (1X) TYP.
 - JOIST CONNECTIONS SHOWN ARE CANAM GROUP Inc. STANDARDS U.N.O.
 - REGULAR BRIDGING TO BE - BOLTED CROSS
 - UPLIFT BRIDGING TO BE - BOLTED CROSS



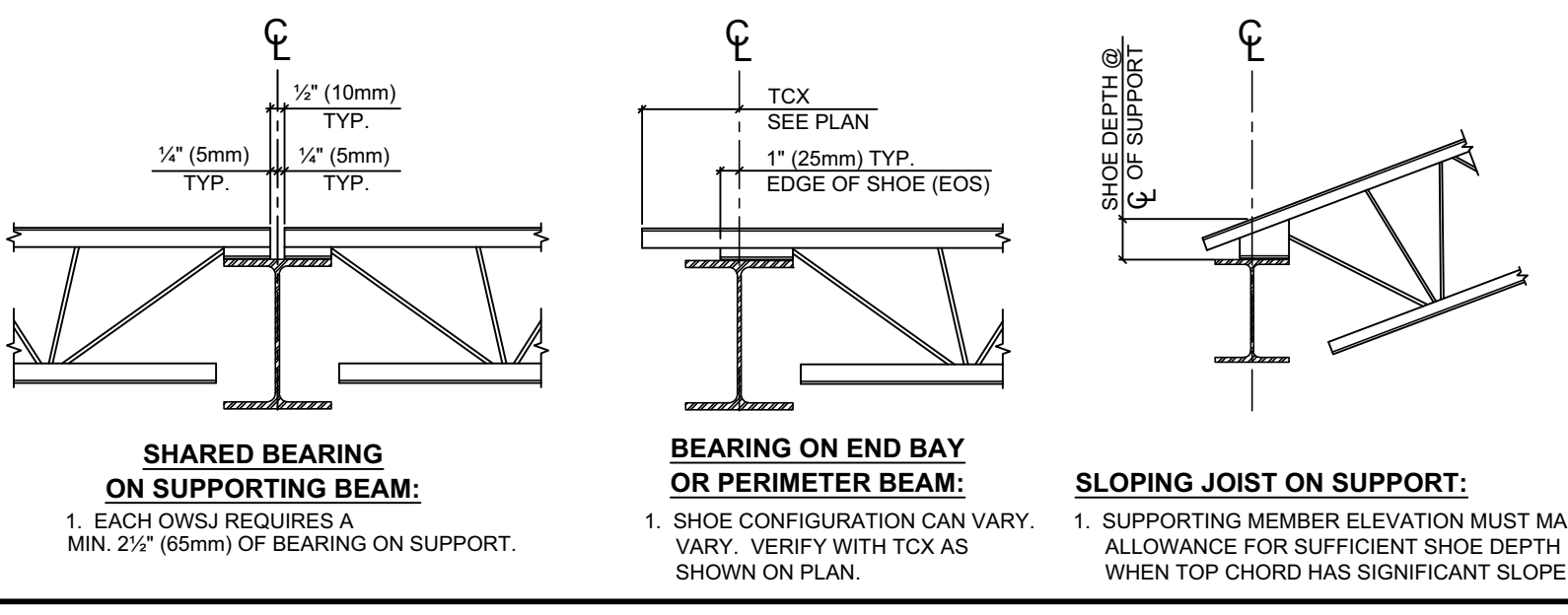
ROOF JOIST FRAMING PLAN (DIV. 01)

- REFERENCE DWG: SN3 REV. 3 & E5 REV. 1
- U/S DECK ELEVATION: DATUM '0'
 - STANDARD SHOE DEPTH IS 102 TYP.
 - 500 DEEP O.W.S.J. TYP.
 - JOIST CONNECTION @ WALL IS TYPE (A) TYP.
 - JOIST CONNECTION @ HSS IS TYPE (B) TYP.
 - REGULAR BRIDGING TO BE - BOLTED CROSS
 - UPLIFT BRIDGING TO BE - BOLTED CROSS
 - ROOF SLOPE ACHIEVED WITH SLOPED INSULATION.




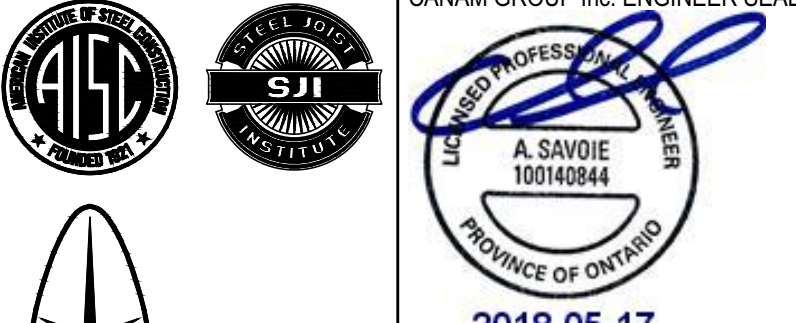
STANDARD TYPICAL OWSJ BEARING CONDITIONS

NOTE: TYPICAL UNLESS NOTED OTHERWISE ON PLAN OR SECTION DETAILS.



LEGEND

- BC --- BOTTOM CHORD
- BCX --- BOTTOM CHORD EXTENSION
- T --- BRIDGING @ TOP ONLY
- B --- BRIDGING @ BOTTOM ONLY
- T & B --- BRIDGING @ TOP & BOTTOM
- C/C --- CENTER TO CENTER
- (A)X --- CHANGE IN ELEVATION
- EOD --- EDGE OF DECK
- EOS --- EDGE OF SHOE
- FW --- FACE OF WALL
- F/S --- FAR SIDE
- (X) --- JOIST CONNECTION TYPES
- KB --- KNEE BRACE
- LBCX --- LOOSE BOTTOM CHORD EXT.
- N/S --- NEAR SIDE
- O/A --- OVER ALL
- (S-X) --- SHOE DEPTHS
- SIM --- SIMILAR
- TJ --- THE JOIST
- TC --- TOP CHORD
- TCX --- TOP CHORD EXTENSION
- TOS --- TOP OF STEEL
- TYP --- TYPICAL
- U/S --- UNDER SIDE
- U/N --- UNLESS NOTED OTHERWISE
- VFO --- VERIFY IN FIELD

0		17-May-2018	ISSUED FOR ERECTION / DIV. #01
REVISION NO:	DATE:	DESCRIPTION	
CANAM GROUP Inc. ENGINEER SEAL:			
		PROJECT NAME: BOYS & GIRLS CLUB OF OTTAWA LOCATION: OTTAWA, ON TITLE: ROOF JOIST FRAMING PLAN CUSTOMER: ABSOLUTE STRUCTURAL STEEL LTD ENGINEER: DRAWN BY: RO/BB PLANT: MONCTON DRAWING NO: JE1 DATE: 16-MAY-2018 PROJECT # U01574	

SHOP DRAWING REVIEW

REVIEWED X
 REVIEWED AS NOTED
 REVISE AND RESUBMIT

HOBIN ARCHITECTURE

This review is for the sole purpose of ascertaining conformance with the general design concept for architectural features only and does not in any way constitute a review of the design of engineering elements which form part of the Contract Documents prepared by others. This review shall not mean that the Architect approves the detail design inherent in the shop drawings. This responsibility shall remain with the Contractor submitting same, and such review shall not relieve the Contractor of his responsibility for errors or omissions in the shop drawings or of his responsibility for meeting all requirements of the Contract Documents. The Contractor is responsible for dimensions to be confirmed and corrected at the job site, for information that pertains solely to fabrication processes, or to techniques of construction and installation and for co-ordination for the work of all subtrades.

By: **Doug van den Ham** Date: **May 23, 2018**
 HOBIN ARCHITECTURE INCORPORATED

SHOP DRAWING REVIEW

CUNLIFFE & ASSOCIATES

This review is for the sole purpose of determining general conformance with the Structural Drawings. This review does not mean that Cunliffe & Associates approves the detail design inherent in the shop drawings. The responsibility for which remains with the Contractor submitting the shop drawings or meeting the requirements of the Contract Documents. The Contractor is responsible for dimensions to be confirmed and corrected at the job site and information that pertains solely to fabrication processes or to techniques of construction installation and for co-ordination of the work of all subtrades.

REVIEWED AS NOTED CHK'D BY **NH**
 REVIEWED DATE: **05/16/18**
 RESUBMIT