

ADDENDUM NO. 2

August 22, 2018

**MAISON DE LA FRANCOPHONIE D'OTTAWA
2720 Richmond Road, Ottawa, Ontario**

The following is provided to bidders as additional information and/or clarification and/or in response to questions.

This Addendum forms part of the Contract Documents and amends the original Specifications and Drawings. Ensure that all affected parties are aware of the items noted and include any and all cost impacts in the Tender submission.

GENERAL

Refer to attached "ADDENDUM PAGEAU MOREL NO.1"

ADDENDUM PAGEAU MOREL NO. 1**1 GENERAL**

- 1.1 This addendum is part of and shall be read jointly with the tender documents. In the case of contradiction, this document has precedence.

2 SCOPE

- 2.1 Modification to a section of drain on plan M-201
- 2.2 Modification to control specifications for energy monitoring integration and calculations
- 2.3 Electrical load has been separated by adding sub-panel with energy monitoring.

3 ELECTROMECHANICAL DESCRIPTION

- 3.1 Specification – Section 25 00 00

- 3.1.1 Article 2.6.7 is inserted as follows:

2.6.7 *Integrate the electrical monitoring panels (3 panels on 3rd floor, 3 panels on the 2nd floor, 10 panels on the ground floor and 4 panels in the basement) with Modubus or other appropriate network for totalizing energy use as per the sequences.*

Note that subtractive calculations are required to derive the HVAC usage from the electrical panel DP-B1.

- 3.2 Specification – Section 25 90 00

- 3.2.1 Article 3.1.9.4 is added as follows:

.4 *For energy monitoring systems:*

- .1 *Measurement devices shall monitor the electrical energy and power and use for each of the following separately: Total electrical energy.*
- .2 *HVAC systems.*
- .3 *Interior lighting.*
- .4 *Exterior lighting*

ADDENDUM PAGEAU MOREL NO. 1

.5 *Receptacle circuits*

.6 *The electrical energy usage for all loads specified above shall be recorded a minimum of every 15 minutes and reported at least hourly, daily, monthly, and annually. The data shall be kept for a minimum of 36 months.*

3.3 MECHANICAL Drawings

3.3.1 The drawings are revised as per drawing list transmitted with this addendum.

3.4 ELECTRICAL Drawings

3.4.1 The drawings are revised as per drawing list transmitted with this addendum.

DRAWING LIST

ISSUE	
DATE	2018-08-20
REASON	FOR ADDENDUM #1

PAGE	NUMBER	DRAWINGS TITLE	REVISION	DESCRIPTION
1 of 51	ME-001	COVER PAGE	0	
2 of 51	M-001	MECHANICAL LEGEND	0	
3 of 51	M-002	MECHANICAL SITE PLAN DEMOLITION / NEW LAYOUT	0	
4 of 51	M-003	MECHANICAL ROOF PLAN DEMOLITION / NEW LAYOUT	0	
5 of 51	MD-100	MECHANICAL FIRE PROTECTION BASEMENT DEMOLITION	0	
6 of 51	M-100	MECHANICAL FIRE PROTECTION BASEMENT NEW LAYOUT	0	
7 of 51	M-101	MECHANICAL FIRE PROTECTION GROUND FLOOR NEW LAYOUT	0	
8 of 51	M-102	MECHANICAL FIRE PROTECTION GROUND FLOOR NEW LAYOUT	0	
9 of 51	M-103	MECHANICAL FIRE PROTECTION SECOND FLOOR NEW LAYOUT	0	
10 of 51	M-104	MECHANICAL FIRE PROTECTION THIRD FLOOR NEW LAYOUT	0	
11 of 51	M-105	MECHANICAL FIRE PROTECTION ATTIC SPACE NEW LAYOUT	0	
12 of 51	M-110	MECHANICAL FIRE PROTECTION SCHEDULE & DETAILS	0	
13 of 51	MD-200	MECHANICAL PLUMBING BASEMENT DEMOLITION	0	
14 of 51	M-200	MECHANICAL PLUMBING BASEMENT NEW LAYOUT	0	
15 of 51	MD-201	MECHANICAL PLUMBING GROUND FLOOR DEMOLITION	0	
16 of 51	M-201	MECHANICAL PLUMBING GROUND FLOOR NEW LAYOUT	1	Issued
17 of 51	MD-202	MECHANICAL PLUMBING 2ND, 3TH AND ATTIC SPACE DEMO	0	
18 of 51	M-202	MECHANICAL PLUMBING GROUND FLOOR NEW LAYOUT	0	
19 of 51	M-203	MECHANICAL PLUMBING SECOND FLOOR NEW LAYOUT	0	
20 of 51	M-204	MECHANICAL PLUMBING THIRD FLOOR NEW LAYOUT	0	
21 of 51	M-205	MECHANICAL PLUMBING ATTIC SPACE NEW LAYOUT	0	
22 of 51	M-210	MECHANICAL PLUMBING	0	
23 of 51	M-211	MECHANICAL PLUMBING DIAGRAMS & DETAILS	0	
24 of 51	M-212	MECHANICAL PLUMBING SANITARY DIAGRAM	0	
25 of 51	MD-300	MECHANICAL HEATING & COOLING GROUND FLOOR DEMOLITION	0	
26 of 51	M-300	MECHANICAL HEATING & COOLING BASEMENT NEW LAYOUT	0	
27 of 51	MD-301	MECHANICAL HEATING & COOLING 2ND & 3RD FLOOR DEMOLITION	0	
28 of 51	M-301	MECHANICAL HEATING & COOLING GROUND FLOOR NEW LAYOUT	0	
29 of 51	M-302	MECHANICAL HEATING & COOLING GROUND FLOOR NEW LAYOUT	0	
30 of 51	M-303	MECHANICAL HEATING & COOLING SECOND FLOOR NEW LAYOUT	0	
31 of 51	M-304	MECHANICAL HEATING & COOLING THIRD FLOOR NEW LAYOUT	0	
32 of 51	M-310	MECHANICAL HEATING & COOLING SCHEDULES & DIAGRAM	0	
33 of 51	M-311	MECHANICAL HEATING & COOLING DETAILS	0	
34 of 51	MD-400	MECHANICAL VENTILATION BASEMENT & GROUND FLOOR DEMOLITION	0	
35 of 51	M-400	MECHANICAL VENTILATION BASEMENT NEW LAYOUT	0	
36 of 51	MD-401	MECHANICAL VENTILATION 2ND & 3RD FLOOR DEMOLITION	0	

DRAWING LIST

ISSUE	
DATE	2018-08-20
REASON	FOR ADDENDUM #1

PAGE	NUMBER	DRAWINGS TITLE	REVISION	DESCRIPTION
37 of 51	M-401	MECHANICAL VENTILATION GROUND FLOOR NEW LAYOUT	0	
38 of 51	M-402	MECHANICAL VENTILATION GROUND FLOOR NEW LAYOUT	0	
39 of 51	M-403	MECHANICAL VENTILATION SECOND FLOOR NEW LAYOUT	0	
40 of 51	M-404	MECHANICAL VENTILATION THIRD FLOOR NEW LAYOUT	0	
41 of 51	M-405	MECHANICAL VENTILATION ATTIC SPACE NEW LAYOUT	0	
42 of 51	M-410	MECHANICAL VENTILATION SCHEDULES & DETAILS	0	
43 of 51	M-411	MECHANICAL VENTILATION SCHEDULES & DETAILS	0	
44 of 51	M-500	MECHANICAL CONTROLS NEW LAYOUT	0	
45 of 51	M-501	MECHANICAL CONTROLS NEW LAYOUT	0	
46 of 51	M-900	MECHANICAL ROOF PLAN DEMOLITION / NEW LAYOUT - FOR SEQUENCE 3	0	
47 of 51	M-901	MECHANICAL FIRE PROTECTION GROUND FLOOR NEW LAYOUT - FOR SEQUENCE 3	0	
48 of 51	M-902	MECHANICAL PLUMBING GROUND FLOOR NEW LAYOUT - FOR SEQUENCE 3	0	
49 of 51	M-903	MECHANICAL PLUMBING SANITARY DIAGRAM - FOR SEQUENCE 3	0	
50 of 51	M-904	MECHANICAL HEATING & COOLING GROUND FLOOR NEW LAYOUT - FOR SEQUENCE 3	0	
51 of 51	M-905	MECHANICAL VENTILATION GROUND FLOOR NEW LAYOUT - FOR SEQUENCE 3	0	

DRAWING LIST

ISSUE	
DATE:	2018-08-17
REASON:	FOR ADDENDUM NO.1

PAGE	NUMBER	DRAWINGS TITLE	REVISION	DESCRIPTION
1 of 29	E-000	COVER PAGE	0	
2 of 29	E-001	LEGEND	0	
3 of 29	E-002	LEGEND	0	
4 of 29	E-003	ELECTRICAL SEQUENCE OF WORK	0	
5 of 29	ED-004	ELECTRICAL SITE PLAN - DEMOLITION	0	
6 of 29	E-004	ELECTRICAL SITE PLAN - NEW LAYOUT	0	
7 of 29	ED-010	ELECTRICAL SERVICES - SINGLE LINE DISTRIBUTION - DEMOLITION	0	
8 of 29	E-010	ELECTRICAL SERVICES - SINGLE LINE DISTRIBUTION	1	ISSUED
9 of 29	E-011	ELECTRICAL FIRE ALARM - SINGLE LINE DISTRIBUTION	0	
10 of 29	E-100	ELECTRICAL MULTIDISCIPLINARY - BASEMENT - NEW LAYOUT	1	ISSUED
11 of 29	E-101	ELECTRICAL MULTIDISCIPLINARY - GROUND FLOOR - NEW LAYOUT	1	ISSUED
12 of 29	E-102	ELECTRICAL MULTIDISCIPLINARY - GROUND FLOOR - NEW LAYOUT	1	ISSUED
13 of 29	E-103	ELECTRICAL MULTIDISCIPLINARY - SECOND FLOOR - NEW LAYOUT	1	ISSUED
14 of 29	E-104	ELECTRICAL MULTIDISCIPLINARY - THIRD FLOOR - NEW LAYOUT	1	ISSUED
15 of 29	E-105	ELECTRICAL MULTIDISCIPLINARY - ATTIC SPACE - NEW LAYOUT	1	ISSUED
16 of 29	ED-200	ELECTRICAL MULTIDISCIPLINARY - BASEMENT - DEMOLITION LAYOUT	0	
17 of 29	E-200	ELECTRICAL SERVICES - BASEMENT - NEW LAYOUT	1	ISSUED
18 of 29	ED-201	ELECTRICAL MULTIDISCIPLINARY - GROUND FLOOR & SECOND FLOOR - DEMOLITION LAYOUT	0	
19 of 29	E-201	ELECTRICAL SERVICES - GROUND FLOOR - NEW LAYOUT	1	ISSUED
20 of 29	E-202	ELECTRICAL SERVICES - GROUND FLOOR - NEW LAYOUT	1	ISSUED

DRAWING LIST

ISSUE	
DATE:	2018-08-17
REASON:	FOR ADDENDUM NO.1

PAGE	NUMBER	DRAWINGS TITLE	REVISION	DESCRIPTION
21 of 29	ED-202	ELECTRICAL MULTIDISCIPLINARY - THIRD FLOOR & ATTIC - DEMOLITION LAYOUT	0	
22 of 29	E-203	ELECTRICAL SERVICES - SECOND FLOOR - NEW LAYOUT	1	ISSUED
23 of 29	E-204	ELECTRICAL SERVICES - THIRD FLOOR - NEW LAYOUT	1	ISSUED
24 of 29	E-205	ELECTRICAL SERVICES -ATTIC SPACE - NEW LAYOUT	1	ISSUED
25 of 29	E-400	ELECTRICAL DETAILS	0	
26 of 29	E-401	ELECTRICAL PANELS	1	ISSUED
27 of 29	E-402	ELECTRICAL PANELS	1	NEW ISSUED
28 of 29	E-403	ELECTRICAL PANELS	1	NEW ISSUED
29 of 29	E-901	MULTIDISCIPLINARY - GROUND FLOOR - NEW LAYOUT FOR SEQUENCE 3	1	ISSUED

1. ALL EXISTING PIPING, THIS INCLUDES DCOW, DHM, VENTS, STORM AND SANITARY DRAINAGE AT CEILING LEVEL TO REMOVE, SOME SECTION WILL REQUIRE SOME REPLACEMENT, SEE NEW LAYOUT.
2. SOME REMOVAL WILL BE REQUIRED AS INDICATED ON DRAWING, SOME SECTIONS OF PIPING MAY BE DAMAGED OR HAVE BEEN PULLED DOWN, THESE SECTIONS ARE TO BE REMOVED.
3. ALL EXISTING PIPE SUPPORTS WILL HAVE TO BE VERIFIED AND REPLACED IF NECESSARY, SOME MAY HAVE BEEN RIPPED OUT, PROVIDE FOR 20% REPLACEMENT ON PIPING THAT REMAINS. ALL OTHER PIPE SUPPORTS NOT USED OR DAMAGED ARE TO BE REMOVED.
4. FOR INFORMATION ONLY, PIPING MATERIAL TO CONSIDER: DRAINAGE SHOWN ON DRAWING IS AS FOLLOWS, MAIN PIPING IS IN XFR PLASTIC PIPING AND SIDE BRANCHES ARE COPPER LINES.
5. FOR INFORMATION ONLY, PIPING MATERIAL FOR STORM AND SANITARY DRAINAGE SHOWN ON DRAWING IS AS FOLLOWS, ALL PIPING IS IN XFR PLASTIC PIPE, THIS INCLUDES SIDE BRANCHES UP TO CONNECTION, NO CONNECTIONS OR LENGTH FOR CONNECTION TO A FUTURE HAVE BEEN INSTALLED, IF ANY REMOVE AND REPLACE.
6. SEE DETAILS AND DIAGRAMS FOR ALL ACCESSORIES AND VALVES TO BE PROVIDED AND INSTALLED, DRAWINGS M-210 AND ABOVE.
7. NO DOMESTIC WATER LINES, DRAIN LINE OR VENTS ARE TO PASS IN THE OUTSIDE WALL, PIPING TO BE SURFACE MOUNTED, THIS INCLUDES MOST OF THE EXISTING WALLS OF EXISTING BUILDING.
8. CORES HAVE ALREADY BEEN MADE IN THE FLOOR AND WALLS FOR PAST FIT-UP, REUSE IF POSSIBLE OTHERWISE TO BE CAPPED OFF BY GENERAL CONTRACTOR AND NEW CORES TO BE MADE TO FIT WITH NEW SETUP.
9. FOR SANITARY PIPING (BRANCHES AND MAIN INCLUDING ALL VENTING) SEE DIAGRAM ON M-210 FOR SIZING.
10. COORDINATE THE LENGTH OF LOW VOLTAGE WIRE BETWEEN CONVERTER AND EQUIPMENT.

1. SEE MODIFICATIONS TO SANITARY UNDER SLAB ON DRAWING M-200.
2. PRESENTLY VENT. SANITARY OUTLET AND CONDUIT FOR ELEVATOR SUMP PIT FLOATS SYSTEM ARE COMING OUT OF THE SLAB AT THIS LOCATION AND ARE CAPPED AT 3' FROM THE GROUND. SEE CONTINUATION ON NEW LAYOUT.
3. EXISTING CONCRETE WALL. PROVIDE CORING THROUGH WALL FOR PASSAGE OF PIPING.
4. PUMP CONDENSATE FROM WALL MOUNTED A/C UNIT.
5. DRAIN CONDENSATE VIA OPEN DRAIN.
6. EXISTING STORM RISER IN CAST IRON TO REPLACE WITH THE SAME MATERIAL. AS HORIZONTAL SECTION. XFR PLASTIC PIPE FROM THIS LEVEL UP TO ROOF.
7. FLOOR SLAB TO BE OPEN (BY GENERAL CONTRACTOR). PREPARE GROUND FOR PLUMBING AND RE-BURY WHEN PLUMBING WORKS ARE COMPLETED. SLAB TO BE RE-DONE AS PER ARCHITECTURAL SPECIFICATIONS.
8. SEE DETAILS FOR DRAINAGE OF DISHWASHER. PROVIDE ALL NECESSARY EQUIPMENTS FOR HOT WATER CONNECTION TO DISHWASHER FROM KITCHEN SINK SERVICE, CW ISOLATION VALVE.
9. MOP SINK FAUCETS AND SERVICES ARE SURFACE MOUNTED. PROVIDE AND INSTALL STEEL BRACKETS.

Revision



TYPE	MANUFACTURER	SERIES	INSTALLATION	LENGHT	LUMEN OUTPUT	OPTIC	REFLECTOR	VOLTAGE	WATTS	TEMPERATURE (°K)	DRIVER TYPE	NUMBER OF DRIVER	OPTION	
D1A	EATON	SWLED	WALL MOUNTED / SUSPENDED CEILING	4'-0"	4800	FULL FROST LENS	N/A	120V	43.3	3500K	0-10V	1	NOTE: PROVIDE A TOTAL OF 4 REMOTES. OPTIONS: SVPD2 (MOTION SENSOR), ACCESSORIES: ISHH-01	
D1B	EATON	SWLED	WALL MOUNTED / SUSPENDED CEILING	4'-0"	4800	FULL FROST LENS	N/A	120V	43.3	3500K	0-10V	1		
D1C	EATON	SWLED	WALL MOUNTED / SUSPENDED CEILING	2'-0"	1600	FULL FROST LENS	N/A	120V	18.9	3500K	0-10V	1		
D1D	EATON	SWLED	WALL MOUNTED / SUSPENDED CEILING	2'-0"	1600	FULL FROST LENS	N/A	120V	15	3500K	0-10V	1		NOTE: PROVIDE A WIREGUARD
D1E	EATON	SWLED	WALL MOUNTED / SUSPENDED CEILING	4'-0"	3600	FULL FROST LENS	N/A	120V	30	3500K	0-10V	1	NOTE: PROVIDE A WIREGUARD	
D2A	EATON	24SR	SUSPENDED CEILING	4'-0"	2900	STD	CURVED	120V	22.7	3500K	0-10V	1	NOTE: PROVIDE A SURFACE MOUNT KIT AND STEMS TO SUSPEND FIXTURE	
D2B	EATON	24SR	GYPSUM CEILING	4'-0"	2900	STD	CURVED	120V	22.7	3500K	0-10V	1		
D2C	EATON	24SR	SUSPENDED CEILING	4'-0"	3900	STD	CURVED	120V	27.2	3500K	0-10V (1-100%)	1		
D2D	EATON	24SR	SUSPENDED CEILING	4'-0"	3900	STD	CURVED	120V	27.2	3500K	0-10V	1		
D3A	EATON	22SR	SUSPENDED CEILING	2'-0"	2000	STD	CURVED	120V	15.4	3500K	0-10V (1-100%)	1	NOTE: PROVIDE A SURFACE MOUNT KIT AND STEMS TO SUSPEND FIXTURE	
D3B	EATON	22SR	SUSPENDED CEILING	2'-0"	2900	STD	CURVED	120V	23.4	3500K	0-10V (1-100%)	1		
D3C	EATON	22SR	SUSPENDED CEILING	2'-0"	2900	STD	CURVED	120V	23.4	3500K	0-10V	1		
D3D	EATON	22SR	SUSPENDED CEILING	2'-0"	2000	STD	CURVED	120V	15.4	3500K	0-10V	1		
D4A	EATON	14SR	SUSPENDED CEILING	4'-0"	2000	STD	CURVED	120V	16.4	3500K	0-10V	1	NOTE: PROVIDE A SURFACE MOUNT KIT AND STEMS TO SUSPEND FIXTURE	
D4B	EATON	14SR	GYPSUM CEILING	4'-0"	2000	STD	CURVED	120V	16.4	3500K	0-10V	1		
D4C	EATON	14SR	SUSPENDED CEILING	4'-0"	2000	STD	CURVED	120V	16.4	3500K	0-10V	1		
D4D	EATON	14SR	SUSPENDED CEILING	4'-0"	2500	STD	CURVED	120V	20.9	3500K	0-10V	1		
D4E	EATON	14SR	GYPSUM CEILING	4'-0"	2500	STD	CURVED	120V	20.9	3500K	0-10V	1	NOTE: PROVIDE A SURFACE MOUNT KIT AND STEMS TO SUSPEND FIXTURE	
D5A	EATON	LD6B	SUSPENDED CEILING	6" Ø	2000	N/A	N/A	120V	21.2	3500K	0-10V (1-100%)	1		NOTE: WIDE DISTRIBUTION, WHITE FLANGE, SEMI-SPECULAR CLEAR FINISH
D5B	EATON	LD6B	SUSPENDED CEILING	6" Ø	1000	N/A	N/A	120V	11	3500K	0-10V (1-100%)	1		NOTE: WIDE DISTRIBUTION, WHITE FLANGE, SEMI-SPECULAR CLEAR FINISH
D5C	EATON	LD6B	GYPSUM CEILING	6" Ø	2000	N/A	N/A	120V	21.2	3500K	0-10V (1-100%)	1		NOTE: WIDE DISTRIBUTION, WHITE FLANGE, SEMI-SPECULAR CLEAR FINISH
D6A	EATON	LD4B	SUSPENDED CEILING	4" Ø	1000	N/A	N/A	120V	11	3500K	0-10V (1-100%)	1	NOTE: MEDIUM DISTRIBUTION, WHITE FLANGE, SPECULAR BLACK FINISH	
D6B	EATON	LD4B	SUSPENDED CEILING	4" Ø	1000	N/A	N/A	120V	11	3500K	0-10V (1-100%)	1	NOTE: WIDE DISTRIBUTION, WHITE FLANGE, SPECULAR BLACK FINISH	
D6C	EATON	LD4B	SUSPENDED CEILING	4" Ø	1500	N/A	N/A	120V	15.5	3500K	0-10V (1-100%)	1	NOTE: MEDIUM DISTRIBUTION, WHITE FLANGE, SPECULAR BLACK FINISH	
D6D	EATON	LD4B	SUSPENDED CEILING	4" Ø	1500	N/A	N/A	120V	15.5	3500K	0-10V (1-100%)	1	NOTE: WIDE DISTRIBUTION, WHITE FLANGE, SEMI-SPECULAR CLEAR FINISH	
D6E	EATON	LD4B	SUSPENDED CEILING	4" Ø	1000	N/A	N/A	120V	11	3500K	0-10V (1-100%)	1	NOTE: WIDE DISTRIBUTION, WHITE FLANGE, SEMI-SPECULAR CLEAR FINISH AND IP66 GASKET KIT	
D7	EATON	HALO RL56	SUSPENDED CEILING	4" Ø	690	N/A	N/A	120V	12	3500K	N/A	1	NOTE: WHITE TRIM. OPTIONS: 90 CRI	
D8A	EATON	VHB	CEILING	4'-0"	18 000	N/A	N/A	120V	160	4000K	0-10V	1	OPTIONS: PAINTED AFTER FABRICATION / WIREGUARD	
D8B	EATON	VHB	CEILING	4'-0"	12 000	N/A	N/A	120V	100	4000K	0-10V	1	OPTIONS: PAINTED AFTER FABRICATION / WIREGUARD	
D9	EATON	VAPORTITE			4 000	FROSTED LENS	N/A	120V	38	4000K	0-10V	1		
D10	EATON	BCLED	WALL MOUNTED	4'-0"	2800	FROSTED LENS	N/A	120V	29	3500K	0-10V	1		
D11	EATON	HVSL	WALL MOUNTED	4'-0"	4300	OPAL	N/A	120V</						

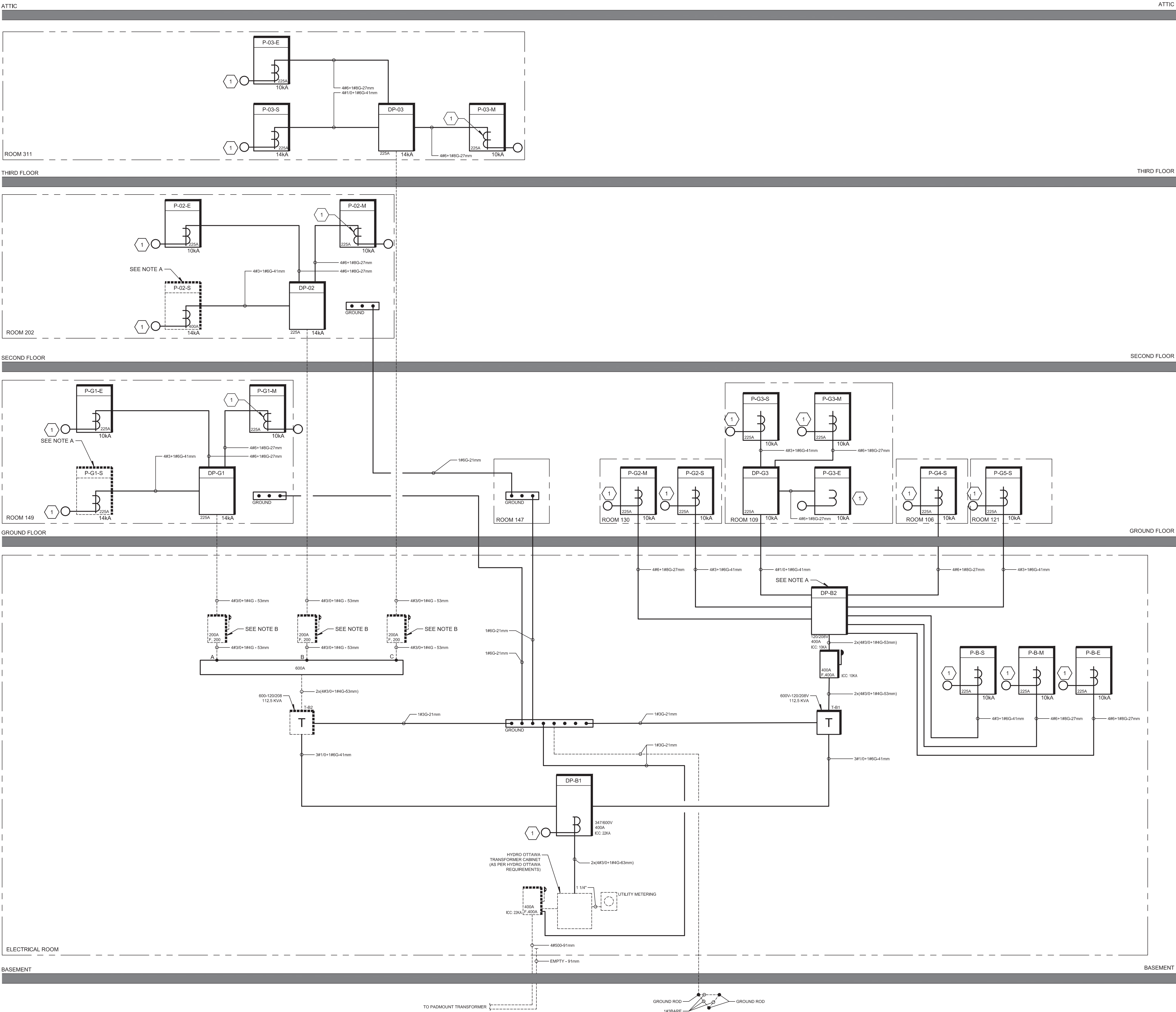
[illegible]

Seal

Title

ELECTRICAL
LEGEND

Drawing n°	Revision
E-002	1



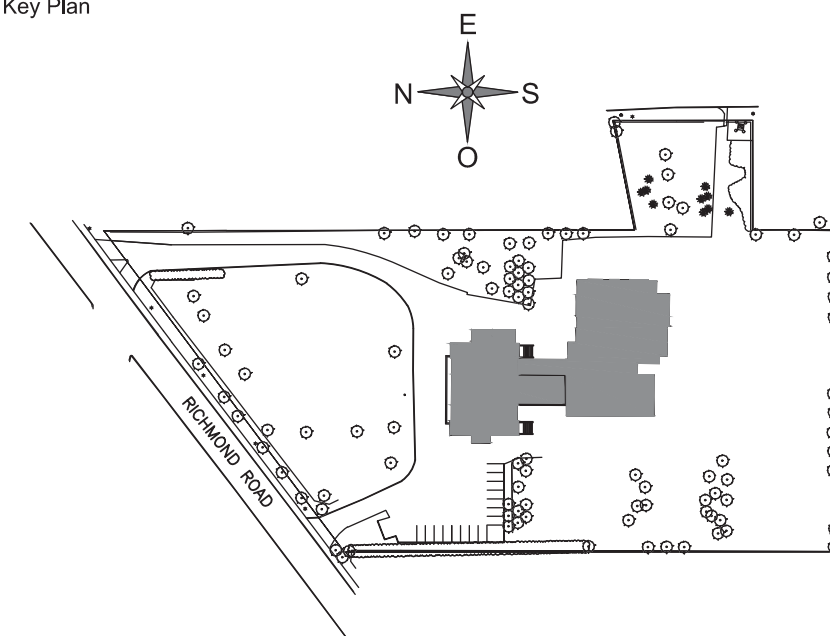
SPECIFIC NOTE(S):

- A- EXISTING PANEL TO BE RE-USED, CHANGE EXISTING BREAKERS ACCORDING TO NEW DISTRIBUTION.
- B- EXISTING TIME DELAY, FUSE TO BE REPLACED FOR NEW INSTANT FUSE (TYPE J).

IDENTIFICATION(S):

- 1 CUSTOMER METERING, MODEL SCHNEIDER ELECTRIC ION 6200 EP2 OR EQUIVALENT.

Key Plan



REVIEW

N°	Date	Description
0	2018-07-25	FOR TENDER
1	2018-08-20	FOR ADDENDUM #1

PAGEAU
MOREL
www.pageaumorel.com
Gatineau

Architect

J.R. J.L.Richards
ENGINEERS-ARCHITECTS-PLANNERS
www.jrichards.ca

Structure

Seal



Project

MAISON DE
DE LA FRANCOPHONIE D'OTTAWA
2720 RICHMOND ROAD, OTTAWA

Title

ELECTRICAL
SERVICES
SINGLE LINE DISTRIBUTION

Drawn by :

F.B.R.

Project n°:

7342-001-000

Design by :

J.Rt.

Date :

2018-07-06

Verified by :

M.L.E.

Scale :

N.T.S.

Drawing n°

E-010

Revision

1

THIS DRAWING SHALL NOT BE USED FOR
CONSTRUCTION OR INSTALLATION
PURPOSES.

MODIFIED

1- IN ALL ROOMS, LIGHTING IS CONTROLLED THROUGH A SWITCH AND AN OCCUPANCY SENSOR (MANUAL ON/AUTO OFF).

[illegible]

PAGEAU 
MOREL
www.pageaumorel.com
Gatineau

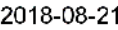
Architect



J.L. Richards
ENGINEERS • ARCHITECTS • PLANNERS
www.jlrichards.ca

Structure

Seal



Project

MAISON DE
DE LA FRANCOPHONIE D'OTTAWA
2720 RICHMOND ROAD, OTTAWA

Title

ELECTRICAL - MULTIDISCIPLINAR BASEMENT NEW LAYOUT

Drawn by : F.BR.

Design by : J.RI

Verified by : M.LE

Project n°: 7342-001-000

Date : 2018-07-06

Scale : $1/8" = 1'-0"$

Drawing n°

Revision

THIS DRAWING SHALL NOT BE USED FOR
CONSTRUCTION OR INSTALLATION
PURPOSES.

MODIFIED

E-100

1

1- LIGHTING CONTROL:
 - IN ROOMS WITH DAYLIGHT SENSOR, FIXTURE SHALL DIM ACCORDING TO AVAILABLE DAYLIGHT.
 - IN CORRIDORS, WASHROOMS AND STAIRS LIGHTING IS CONTROLLED THROUGH OCCUPANCY SENSOR.
 IN TECHNICAL ROOMS, STORAGE AND OTHER ROOM LIGHTING IS CONTROLLED THROUGH OCCUPANCY SENSOR, IN OTHER ROOMS, LIGHTING IS CONTROLLED THROUGH A SWITCH AND A OCCUPANCY SENSOR. (MANUAL ON/AUTO OFF)

- 2- ALL THE LIGHTING DEVICES UNDER THE HATCHED ZONE ARE SHOWN ON THE DRAWING E-102.

- 1 CEILING MOUNTED AND CENTERED.
- 2 TO BE INSTALLED IN THE ELEVATOR SHAFT.
- 3 PROVIDE LOCKABLE METAL BOX OVER THE DIMMERS.
- 4 FIRE ALARM TRANSMISSION EQUIPMENT.

[illegible]

J.L. Richards
ENGINEERS - ARCHITECTS - PLANNERS
www.jlrichards.ca

MAISON DE
DE LA FRANCOPHONIE D'OTTAWA
2720 RICHMOND ROAD, OTTAWA

Title

ELECTRICAL - MULTIDISCIPLINARY
GROUND FLOOR
NEW LAYOUT

Drawn by :	F.BR.	Project n°:	7342-001-000
Design by :	J.RI.	Date :	2018-07-06
Verified by :	M.L.E.	Scale :	1/8" = 1'-0"

Drawing n°

Revision

E-101

1



GROUND FLOOR - SOUTH

1 GENERAL REVISION

THIS DRAWING SHALL NOT BE USED FOR
CONSTRUCTION OR INSTALLATION
PURPOSES.

MODIFIED

E-101

- 1- ALL SERVICES IN THE GYMNASIUM SHALL BE PROTECTED WITH A WIREGUARD. FIRE ALARM COMPONENT SHALL BE PROTECTED WITH A SOLID COVER FROM STI.
- 2- LIGHTING CONTROL:
 - IN ROOMS WITH DAYLIGHT SENSOR, FIXTURE SHALL DIM ACCORDING TO AVAILABLE DAYLIGHT.
 - IN CORRIDORS, WASHROOMS, TECHNICAL ROOMS, STORAGE AND STAIRS LIGHTING IS CONTROLLED THROUGH OCCUPANCY SENSOR. IN OTHER ROOMS, LIGHTING IS CONTROLLED THROUGH A SWITCH AND A OCCUPANCY SENSOR. (MANUAL ON/AUTO OFF)
- 3- ALL THE LIGHTING DEVICES UNDER THE HATCHED ZONE ARE SHOWN ON THE DRAWING E-101.

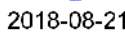
- 1 PROVIDE LOCKABLE PLASTIC COVER OVER THE LIGHT CONTROLS.
- 2 SEE GYMNASIUM LIGHTING DETAIL.
- 3 1 ON/OFF BUTTON WALL SWITCH (CONTROL ALL FIXTURES IN THE GYMNASIUM INCLUDING THE STAGE).
- 4 8 ON/OFF BUTTON WALL SWITCH. (1 BUTTON PER HORIZONTAL ROW TO POWER FULL ON AND TO POWER FULL OFF).
- 5 1 DIMMING SWITCH PER HORIZONTAL ROW AND FOR STAGE.
- 6 GYMNASIUM CONTROLLER.

[illegible]

Architect

JLR **J.L.Richards**
ENGINEERS • ARCHITECTS • PLANNERS
www.jlrichards.ca

Sea



MAISON DE
DE LA FRANCOPHONIE D'OTTAWA
2720 RICHMOND ROAD, OTTAWA

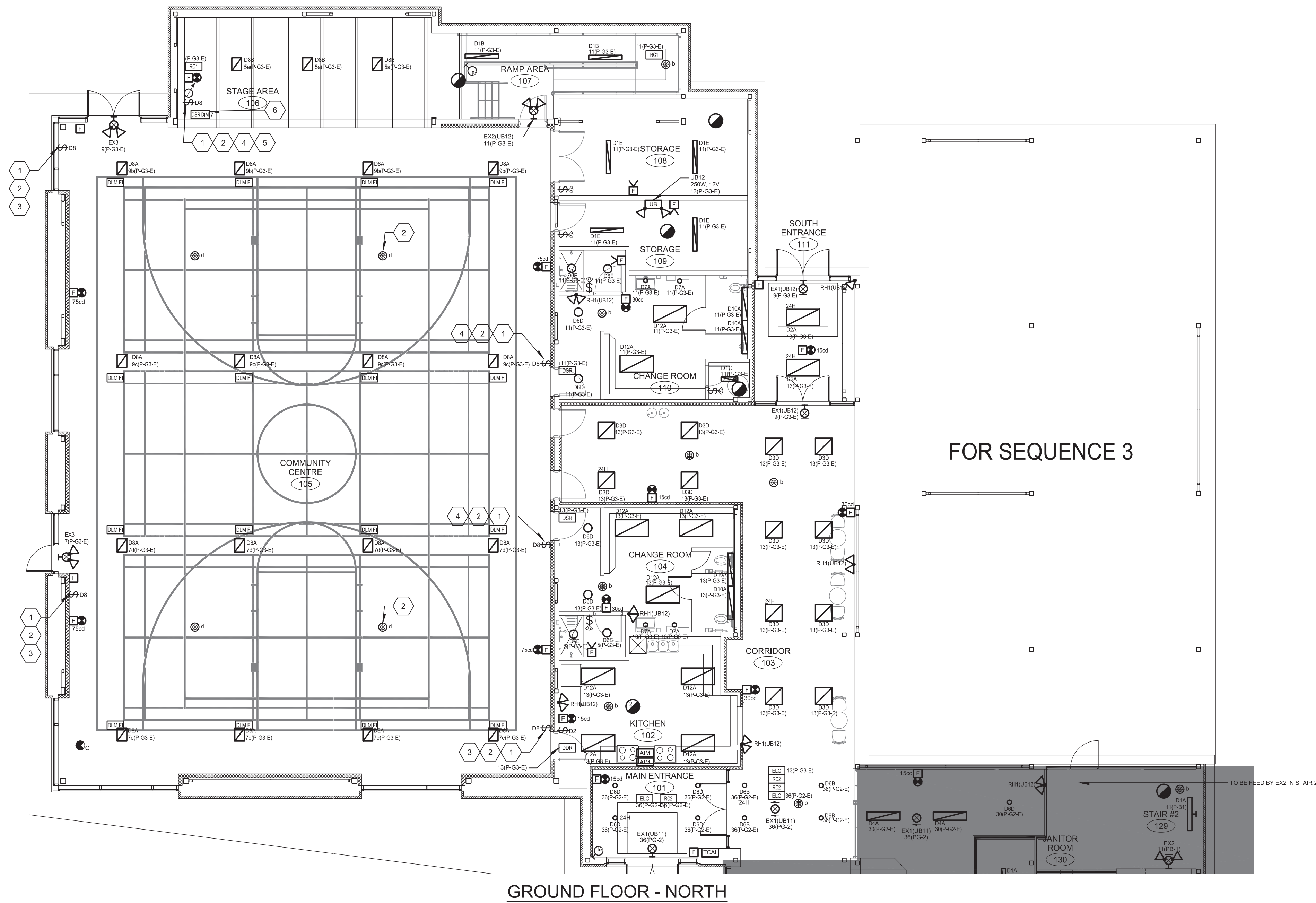
Drawn by :	F.BR	Project n°:	7342-001-000
Design by :	J.RI.	Date :	2018-07-06
Verified by :	M.L.E.	Scale :	1/8" = 1'-0"

Revision

MODIFIED

E-102

1



FOR SEQUENCE 3

— TO BE FEED BY EX2 IN STAIR 2

1 GENERAL REVISION

THIS DRAWING SHALL NOT BE USED FOR
CONSTRUCTION OR INSTALLATION
PURPOSES.

1- LIGHTING CONTROL:
 - IN ROOMS WITH DAYLIGHT SENSOR, FIXTURE SHALL DIM ACCORDING TO AVAILABLE DAYLIGHT.
 - IN CORRIDORS, WASHROOMS AND STAIRS LIGHTING IS CONTROLLED THROUGH OCCUPANCY SENSOR.
 IN OTHERS ROOMS LIGHTING IS CONTROLLED THROUGH A SWITCH AND A OCCUPANCY SENSOR. (MANUAL ON/AUTO OFF)

Key Plan

The Key Plan shows the building footprint, parking lot, and surrounding roads. The plan includes a north arrow pointing towards the top of the page. The building is located on the right side of the plan, with a parking lot to its left. A road labeled 'ROUND RD' runs along the bottom left. The site is bounded by a road on the top and a road on the right.

[illegible]

Architect

JLR **J.L.Richards**
ENGINEERS • ARCHITECTS • PLANNERS
www.jlrichards.ca

Seal

Title
ELECTRICAL - MULTIDISCIPLINAR
SECOND FLOOR
NEW LAYOUT

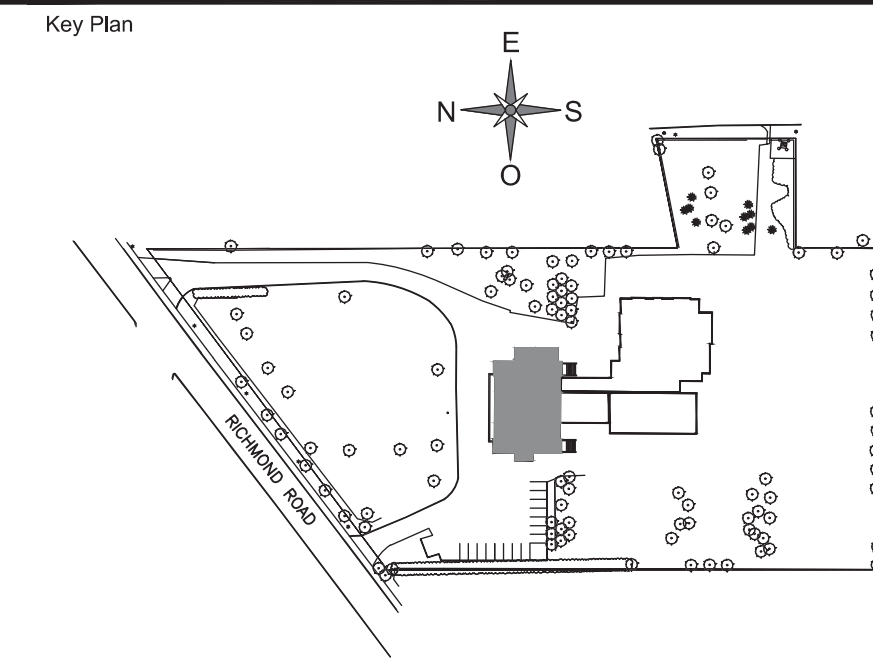
Drawing n°	Revision
------------	----------

MODIFIED	E-103	1
-----------------	-------	---

1 GENERAL REVISION

1- LIGHTING CONTROL:
- IN ROOMS WITH DAYLIGHT SENSOR, FIXTURE SHALL DIM ACCORDING TO AVAILABLE DAYLIGHT.
- IN CORRIDORS, WASHROOMS AND STAIRS LIGHTING IS CONTROLLED TROUGH OCCUPANCY SENSOR.
IN TECHNICAL ROOMS, STORAGE AND OTHER ROOM LIGHTING IS CONTROLLED TROUGH OCCUPANCY SENSOR. IN OTHER ROOMS LIGHTING IS CONTROLLED TROUGH A SWITCH AND A OCCUPANCY SENSOR. (MANUAL ON/AUTO OFF)


- 1 SWITCH FOR ATTIC LIGHTING INSTALLED NEAR LADDER.
- 2 LOCATED IN THE TOP OF ELEVATOR SHAFT. INSTALL A REMOTE TEST CONNECTION IN THE LOBBY NEAR THE ROOF.
- 3 FOR DRY PIPE SYSTEM.
- 4 LOW TEMPERATURE MODULE POTTER "RTS".

[illegible]

Architect

 **J.L. Richards**
ENGINEERS • ARCHITECTS • PLANNERS
www.jlrichards.ca

Seal



The seal is circular with a double-lined border. The outer ring contains the text "LICENSED PROFESSIONAL ENGINEER" at the top and "STATE OF TEXAS" at the bottom. The center of the seal features a stylized "E" shape. Inside the "E", the text "M. A. J. LEDERG" is written in a serif font, with "NO. 19336-05" below it. A blue ink signature is written across the bottom half of the seal.

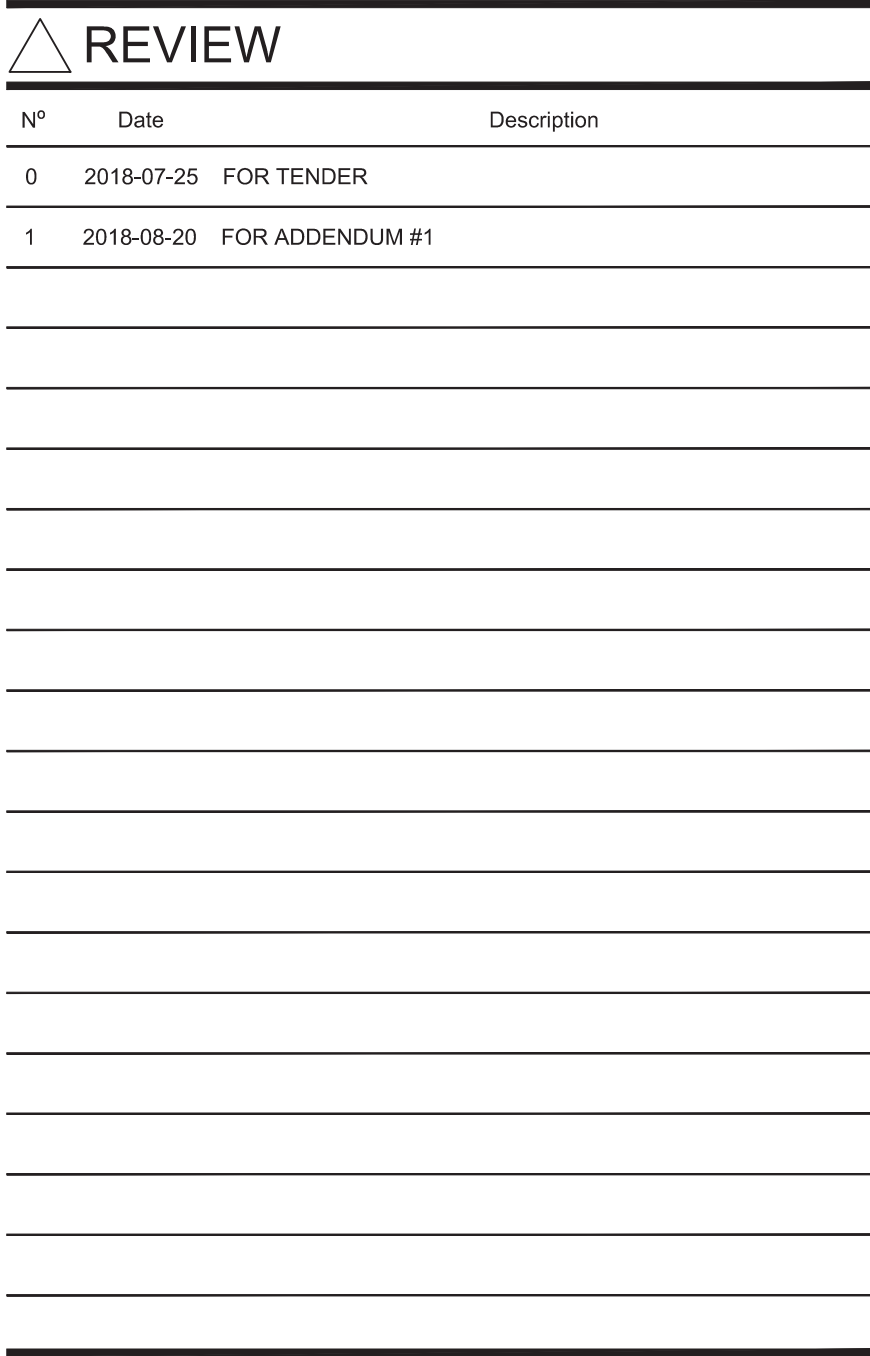
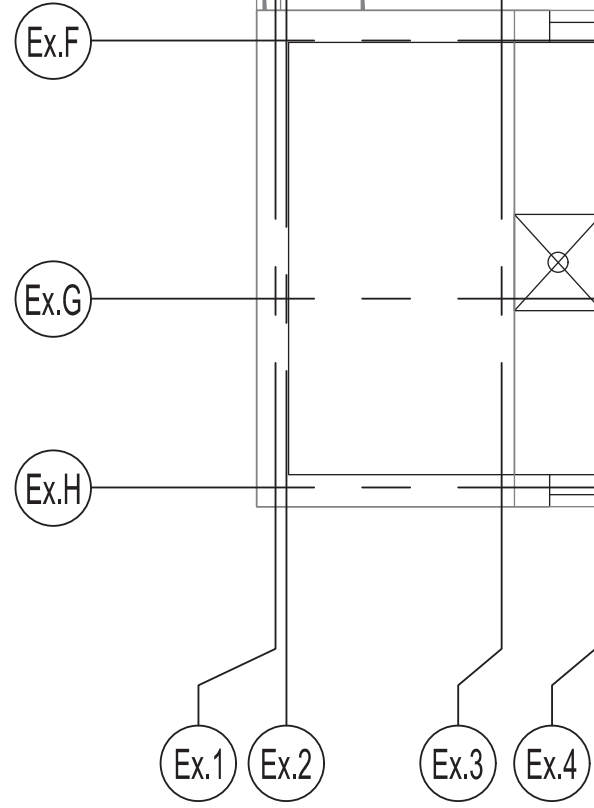
2018-08-21

Title
ELECTRICAL - MULTIDISCIPLINAR
THIRD FLOOR
NEW LAYOUT

Drawing n°	Revision
------------	----------

MODIFIED

1



Architect

JLR **J.L.Richards**
ENGINEERS • ARCHITECTS • PLANNERS
www.jlrichards.ca

Seal

2018-08-21

Title

ELECTRICAL - MULTIDISCIPLINARY
ATTIC SPACE
NEW LAYOUT

Drawing n°	Revision
------------	----------

E-105

1

THIS DRAWING SHALL NOT BE USED FOR
CONSTRUCTION OR INSTALLATION
PURPOSES.

A- JUNCTION BOX IN CEILING SPACE FOR AUTOMATIC DOOR SYSTEM C/W CONDUIT AND PUSH BUTTONS. INSTALL A TEMPORIZED RELAY ON AUTOMATIC DOORS. COORDINATE EXACT LOCATION OF THE PUSH BUTTONS WITH ARCHITECT.

B- FUSED DISCONNECT WITH AUXILIARY CONTACT FOR HANDICAP LIFT CONNECTION. COORDINATE EXACT LOCATION ON SITE. PROVIDE TWO(2) #14 AWG CONDUCTORS AND A GROUND CONDUCTOR BETWEEN THE FUSED DISCONNECT CONTACT AND THE CONNECTION BOX.

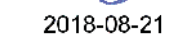
- 1 COORDINATE EXACT HEIGHT AND LOCATION WITH OWNER.
- 2 FOR PUMP PUMP 1 (SP.1), ONE OUTLET FOR SP.1 AND ONE FOR ALARM PANEL.
- 3 CONNECT CABLE TRAY TO THE GROUND BAR WITH A 12 AWG GREEN CONDUCTOR.
- 4 INSTALL AN ELECTRICAL OUTLET FOR WATER FOUNTAIN AT 16'(400mm) AFF.
- 5 TWO (2) NEW CABLE TRAYS MODEL CF 150/150 FROM LEGRAND. INSTALL THE CABLE TRAYS ONE OVER THE OTHER.
- 6 OUTLET TO BE INSTALLED IN ELEVATOR PIT. COORDINATE EXACT LOCATION WITH ELEVATOR CONTRACTOR FOR EASY ACCES.
- 7 TWO (2) 4" SLEEVES.
- 8 EQUIPMENTS INSTALLED ON ROOF.
- 9 CIRCUIT IN CEILING SPACE RESERVED FOR CONTROL EQUIPMENT. COORDINATE CONNECTIONS AND LOCATION ON SITE WITH DIVISION 25.
- 10 CIRCUITS RESERVED FOR TELECOM EQUIPMENT.
- 11 CONNECT THE EVAPORATOR TO OUTSIDE CONDENSER CD-005 WITH 2#12(PPOWER) AND 4#12 (CONTROL).
- 12 TELEPHONE LINE FOR ELEVATOR.
- 13 FOR CUSTOMER MEASURING.
- 14 PLUG LOAD ROOM CONTROLLER TO CONTROL CIRCUIT #27.
- 15 PLUG LOAD ROOM CONTROLLER TWO(2) MODULE TO CONTROL CIRCUIT #19 AND #21.

[illegible]

Architect

Structure

Seal



Project

Title

Drawn by : F.B.R.

Project n°: 7342-001-000

y : J.RI. Date : 2018-07-06

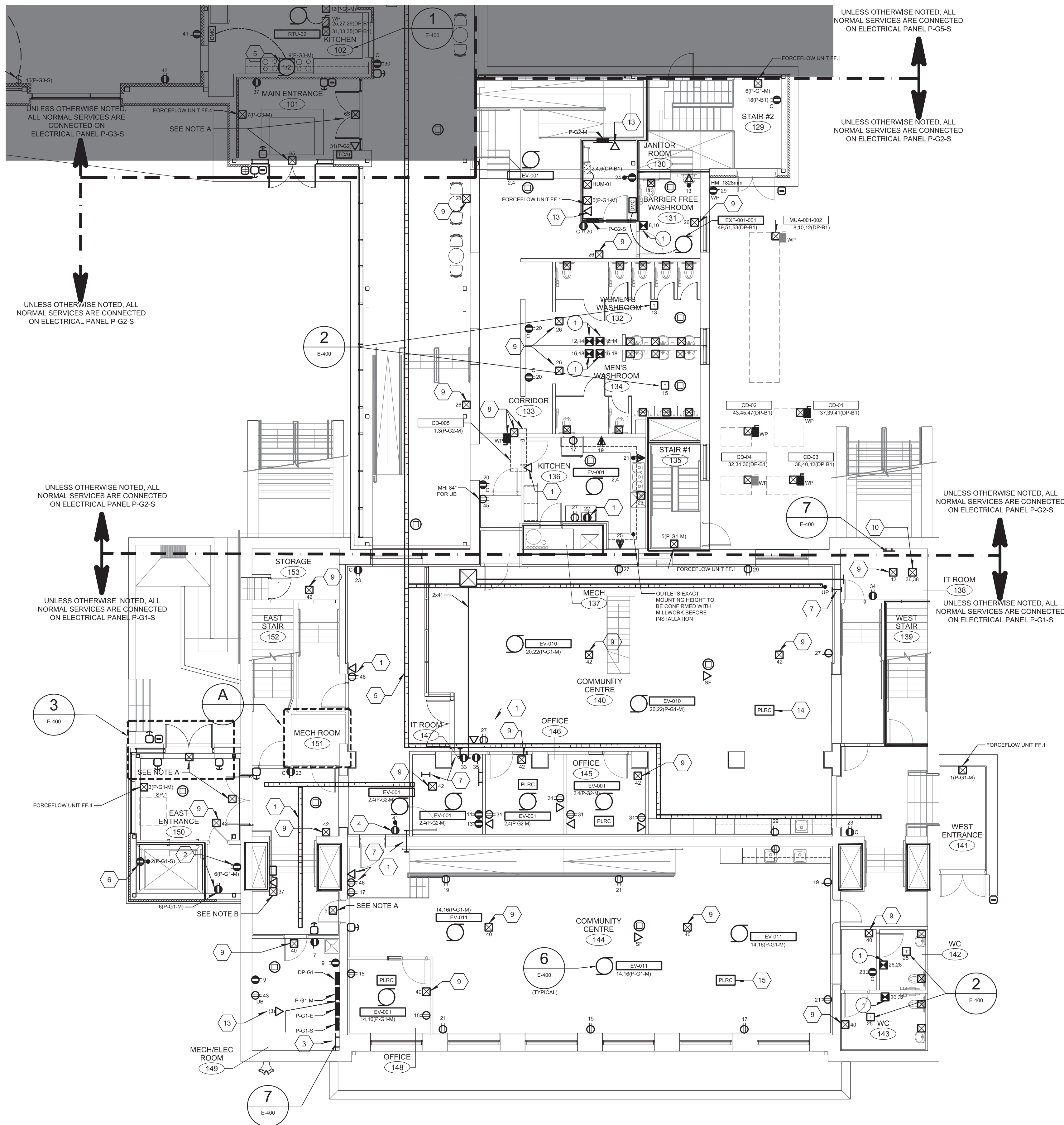
Verified by : M.LE.

Scale : $1/8" = 1'-0"$

Drawing n°

Revision

1

MODIFIED

A ENLARGED VIEW
SCALE = 1/4"=1'-0"

2x21mm
FEEDER: 3#8-1#10G
CONTROL: 2#10-1#12G

ELEVATOR SAFETY SWITCH
60A/4-40A(WITH AUXILIARY
CONTACT)
31/33/35 (DP-B1)

ELEVATOR ROOM SAFETY SWITCH
15A/1-15A
10 (P-G1)

ELEVATOR ROOM LIGHTS
15A/1-15A
12 (P-G1)

ELEVATOR CONTROL
PANEL
(BY OTHERS)

MECH ROOM
151

DEM

2#12x1#12G-21mm

A ENLARGED VIEW
SCALE = 1/4" = 1'-0"

1 GENERAL REVISION

Drawn by : F.BR.

Project n°: 7342-001-000

Design by : J.R.I.

Date : 2018-07-06

Verified by : M.LE.

Scale : $1/8" = 1'-0"$

Drawing n°

Revision

1

m:\reson-angles-4121\018 9-15- C-07342 2720 Richmond\011009 Emission officielle\04 Addenda\01 Addenda No. 1_20180817\DWG\E-201 & E-202\ES-A-GRO_001.dwg

UNLESS OTHERWISE NOTED, ALL
NORMAL SERVICES ARE CONNECTED
ON ELECTRICAL PANEL P-G3-S

UNLESS OTHERWISE NOTED, ALL
NORMAL SERVICES ARE CONNECTED
ON ELECTRICAL PANEL P-G4-S

UNLESS OTHERWISE NOTED, ALL
NORMAL SERVICES ARE CONNECTED
ON ELECTRICAL PANEL P-G4-S

GROUND FLOOR - NORTH

UNLESS OTHERWISE NOTED, ALL
NORMAL SERVICES ARE CONNECTED
ON ELECTRICAL PANEL P-G5-S

UNLESS OTHERWISE NOTED, ALL
NORMAL SERVICES ARE CONNECTED
ON ELECTRICAL PANEL P-G2-S

GENERAL NOTE(S):

- 1- ALL CONDUITS TO BE CONCEALED UNLESS OTHERWISE SPECIFIED.
- 2- EXISTING RECESSED ELECTRICAL COMPONENTS (SWITCHES AND RECEPTACLES) TO BE REPLACED AND REWIRED UP TO SOURCE.
- 3- PROVIDE TAMPER RESISTANT PLUGS IN THE DAYCARE AREAS.
- 4- ALL THE ELECTRICAL SERVICES IN THE HATCHED ZONE ARE SHOWN ON THE DRAWING E-201.

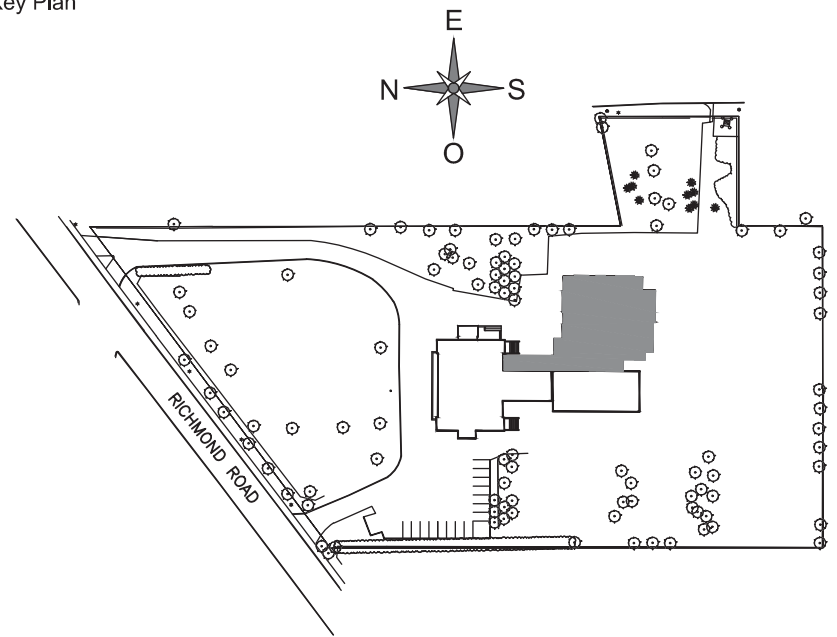
SPECIFIC NOTE(S):

- A- JUNCTION BOX IN CEILING SPACE FOR AUTOMATIC DOOR SYSTEM C/W CONDUIT AND PUSH BUTTONS. INSTALL A TEMPORIZED RELAY ON AUTOMATIC DOORS. COORDINATE EXACT LOCATION OF THE PUSH BUTTONS WITH ARCHITECT.

IDENTIFICATIONS(S):

- 1 TWO(2) NEW CABLE TRAYS CF 150/150 FROM LEGRAND. INSTALL CABLES TRAY ONE OVER THE OTHER.
- 2 PROVIDE POWER TO KEY OPERATED BASKET LIFT MOTOR, (120V)
- 3 PROVIDE POWER TO KEY OPERATED DIVIDER (120V) AND A LOCKABLE PLASTIC COVER.
- 4 INSTALL OUTSIDE RECEPTACLE FOR FUTURE SIGN. HEIGHT TO BE DETERMINED ON SITE.
- 5 ELECTRICAL CONNECTION FOR FAN ON THE ROOF.
- 6 COORDINATE EXACT HEIGHT AND LOCATION WITH OWNER. PLUG IS APPROXIMATIVELY AT 72" AND DATA AT 60" FROM THE FLOOR.
- 7 SEE KITCHEN DETAIL.
- 8 FOR CUSTOMER MESURING.

Key Plan



REVIEW

N°	Date	Description
0	2018-07-25	FOR TENDER
1	2018-08-20	FOR ADDENDUM #1

**PAGEAU
MOREL**
www.pageaumorel.com
Gatineau

Architect

J.R. J.L.Richards
ENGINEERS - ARCHITECTS - PLANNERS
www.jrichards.ca

Structure

Seal



Project

**MAISON DE
DE LA FRANCOPHONIE D'OTTAWA**
2720 RICHMOND ROAD, OTTAWA

Title

**ELECTRICAL - SERVICES
GROUND FLOOR
NEW LAYOUT**

Drawn by :

F.B.R.

Project n°:

7342-001-000

Design by :

J.Rt.

Date :

2018-07-06

Verified by :

M.L.E.

Scale :

1/8" = 1'-0"

Drawing n°

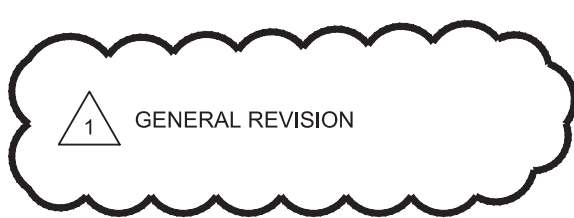
E-202

Revision

1

THIS DRAWING SHALL NOT BE USED FOR
CONSTRUCTION OR INSTALLATION
PURPOSES.

MODIFIED





- 1- UNLESS NOTED OTHERWISE, ALL NORMAL SERVICES ARE CONNECTED ON ELECTRICAL PANEL P-03-S.
- 2- SEE ELECTRICAL PANEL FOR ALL MECHANICAL EQUIPMENT CIRCUIT INFORMATION.
- 3- INSTALL A SAFETY SWITCHES FOR ALL EV UNITS IN CEILING SPACE.
- 4- ALL WIRING DEVICES INSTALLED ON EXISTING WALL TO BE SURFACE MOUNTED UNLESS OTHERWISE SPECIFIED.

- A- NEW 6"x6"x2" BOX BEHIND THE TV. EXACT LOCATION TO BE DETERMINED ON SITE. PROVIDE ONE 27mm CONDUIT TO THE FLOOR BOX AND ONE 41mm CONDUIT TO ANOTHER NEW 6"x6"x2" WALL BOX 6" FROM FLOOR. PROVIDE AN ACCESS DOOR TO COVER IT (EXAMPLE AND FROM CENDREX). EXACT LOCATION OF THAT BOX TO BE DETERMINED ON SITE.
- B- NEW POKE THROUGH FLOOR BOXES WITH TWO REGULAR DUPLO PLUGS AND TWO DECORA COMMUNICATION OPENINGS. #476-6-8-33-XX FROM WELLMARK.
- C- JUNCTION BOX IN CEILING SPACE FOR AUTOMATIC DOOR SYSTEM C/W CONDUIT AND PUSH BUTTONS. FOR REQUIRED ACCESSIBILITY COORDINATE EXACT LOCATION WITH ARCHITECT. MOUNTED HEIGHT OF PUSH BUTTONS IS 40" ABOVE FLOOR.

1. INSTALL THE PLUG BEHIND THE TV. EXACT LOCATION TO BE DETERMINED ON SITE.
2. INSTALL AN ELECTRICAL OUTLET FOR WATER FOUNTAIN AT 16"(400mm) AFF.
3. CIRCUIT IN CEILING SPACE RESERVED FOR CONTROL EQUIPMENT. COORDINATE CONNECTIONS AND LOCATION ON SITE WITH DIVISION 25.
4. 4" FIRESTOP SLEEVE.
5. TWO(2) NEW CABLE TRAYS MODEL CF 150/150 FROM LEGRAND. INSTALL CABLE TRAYS ONE OVER THE OTHER.
6. COORDINATE EXACT HEIGHT AND LOCATION WITH OWNER.
7. CONNECT THE CABLE TRAY TO THE GROUND BAR WITH A 12 AWG GREEN CONDUCTOR.
8. COORDINATE EXACT HEIGHT AND LOCATION WITH OWNER. PLUG IS APPROXIMATIVELY AT 72" FROM THE FLOOR AND DATA AT 60".
9. 2" SLEEVE.
10. FOR CUSTOMER MESURING.
11. PLUG LOAD ROOM CONTROLLER TO CONTROL CIRCUIT #37.
12. PLUG LOAD ROOM CONTROLLER TO CONTROL CIRCUIT #43.
13. PLUG LOAD ROOM CONTROLLER FIVE MODULE TO CONTROL CIRCUIT #26,28,30,34,36.
14. PLUG LOAD ROOM CONTROLLER SIX MODULE TO CONTROL CIRCUIT #44,46,48,55,57,65.

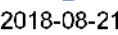


**PAGEAU
MOREL**
www.pageaumorel.com
Gatineau



J.L. Richards
ENGINEERS - ARCHITECTS - PLANNERS
www.jlrichards.ca

Seal



MAISON DE
DE LA FRANCOPHONIE D'OTTAWA
2720 RICHMOND ROAD, OTTAWA

ELECTRICAL - SERVICES

THIRD FLOOR

NEW LAYOUT

Drawing n°

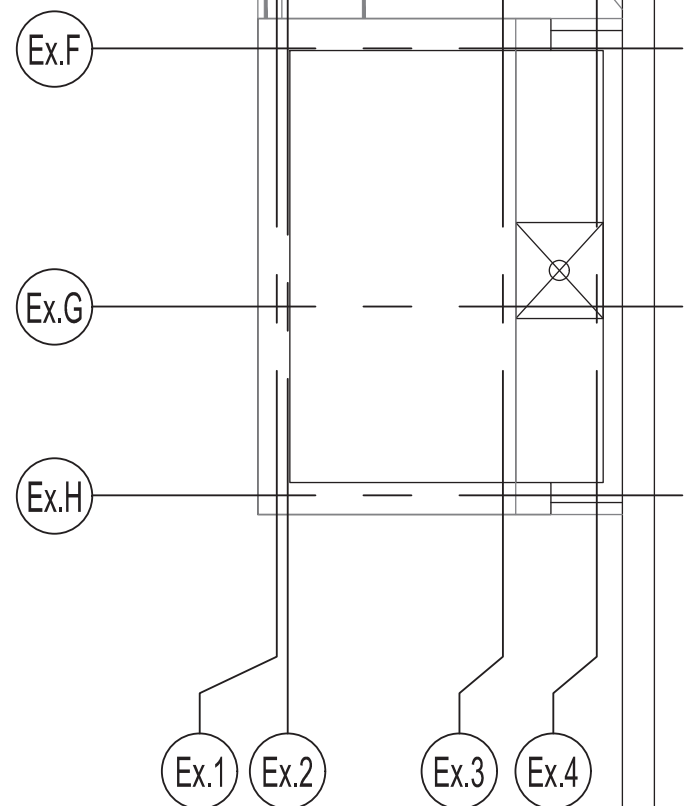
Revision

THIS DRAWING SHALL NOT BE USED FOR
CONSTRUCTION OR INSTALLATION
PURPOSES.

MODIFIED

E-204

1



MODIFIED

1

REV.	WATTS	ROOM: 4	VOLTAGE: 347.600_VOLTS	3 Ø 4 F.	WATTS	REV.
		PANNEAU NO: DP-B1				
2806		1	1	2	10000	
		2	2	3		
		3	3	4		
		4	4	5		
10000		5	5	6	12456	
		6	6	7		
		7	7	8		
		8	8	9		
2806		9	9	10		
		10	10	11		
		11	11	12		
		12	12	13		
		13	13	14		
		14	14	15		
28000		15	15	16	53976	
		16	16	17		
		17	17	18		
		18	18	19		
10069		19	19	20	8346	
		20	20	21		
		21	21	22		
		22	22	23		
4567		23	23	24	19203	
		24	24	25		
		25	25	26		
14532		26	26	27	19203	
		27	27	28		
		28	28	29		
19203		29	29	30	16089	
		30	30	31		
		31	31	32		
		32	32	33		
860		33	33	34	4567	
		34	34	35		
95337		35	35	36	105525	
		36	36	37		
		37	37	38		
2806		38	38	39	2806	
		39	39	40		
		40	40	41		
		41	41	42		
		42	42	43		
		43	43	44		
		44	44	45		
		45	45	46		
		46	46	47		
		47	47	48		
		48	48	49		
		49	49	50		
		50	50	51		
		51	51	52		
		52	52	53		
		53	53	54		
		54	54	55		
		55	55	56		
		56	56	57		
		57	57	58		
		58	58	59		
		59	59	60		
		60	60	61		
		61	61	62		
		62	62	63		
		63	63	64		
		64	64	65		
		65	65	66		
		66	66	67		
		67	67	68		
		68	68	69		
		69	69	70		
		70	70	71		
		71	71	72		
		72	72	73		
		73	73	74		
		74	74	75		
		75	75	76		
		76	76	77		
		77	77	78		
		78	78	79		
		79	79	80		
		80	80	81		
		81	81	82		
		82	82	83		
		83	83	84		
		84	84	85		
		85	85	86		
		86	86	87		
		87	87	88		
		88	88	89		
		89	89	90		
		90	90	91		
		91	91	92		
		92	92	93		
		93	93	94		
		94	94	95		
		95	95	96		
		96	96	97		
		97	97	98		
		98	98	99		
		99	99	100		
		100	100	101		
		101	101	102		
		102	102	103		
		103	103	104		
		104	104	105		
		105	105	106		
		106	106	107		
		107	107	108		
		108	108	109		
		109	109	110		
		110	110	111		
		111	111	112		
		112	112	113		
		113	113	114		
		114	114	115		
		115	115	116		
		116	116	117		
		117	117	118		
		118	118	119		
		119	119	120		
		120	120	121		
		121	121	122		
		122	122	123		
		123	123	124		
		124	124	125		
		125	125	126		
		126	126	127		
		127	127	128		
		128	128	129		
		129	129	130		
		130	130	131		
		131	131	132		
		132	132	133		
		133	133	134		
		134	134	135		
		135	135	136		
		136	136	137		
		137	137	138		
		138	138	139		
		139	139	140		
		140	140	141		
		141	141	142		
		142	142	143		
		143	143	144		
		144	144	145		
		145	145	146		
		146	146	147		
		147	147	148		
		148	148	149		
		149	149	150		
		150	150	151		
		151	151	152		
		152	152	153		
		153	153	154		
		154	154	155		
		155	155	156		
		156	156	157		
		157	157	158		
		158	158	159		
		159	159	160		
		160	160	161		
		161	161	162		
		162	162	163		
		163	163	164		
		164	164	165		
		165	165	166		
		166	166	167		
		167	167	168		
		168	168	169		
		169	169	170		
		170	170	171		
		171	171	172		
		172	172	173		
		173	173	174		
		174	174	175		
		175	175	176		
		176	176	177		
		177	177	178		
		178	178	179		
		179	179	180		
		180	180	181		
		181	181	182		
		182	182	183		
		183	183	184		
		184	184	185		
		185	185	186		
		186	186	187		
		187	187	188		
		188	188	189		
		189	189	190		
		190	190	191		
		191	191	192		
		192	192	193		
		193	193	194		
		194	194	195		
		195	195	196		
		196	196	197		
		197	197	198		
		198	198	199		
		199	199	200		
		200	200	201		
		201	201	202		
		202	202	203		
		203	203	204		
		204	204	205		
		205	205	206		
		206	206	207		
		207	207	208		
		208	208	209		
		209	209	210		
		210	210	211		
		211	211	212		
		212	212	213		
		213	213	214		
		214	214	215		
		215	215	216		
		216	216	217		
		217	217	218		
		218	218	219		
		219	219	220		
		220	220	221		
		221	221	222		
		222	222	223		
		223	223	224		
		224	224	225		
		225	225	226		
		226	226	227		
		227	227	228		
		228	228	229		
		229	229	230		
		230	230	231		
		231	231	232		
		232	232	233		
		233	233	234		
		234	234	235		
		235	235	236		
		236	236	237		
		237	237	238		
		238	238	239		
		239	239	240		
		240	240	241		
		241	241	242		
		242	242	243		
		243	243	244		
		244	244	245		
		245	245	246		
		246	246	247		
		247	247	248		
		248	248	249		
		249	249	250		
		250	250	251		
		251	251	252		
		252	252	253		
		253	253	254		
		254	254	255		
		255	255	256		
		256	256	257		
		257	257	258		
		258	258	259		
		259	259	260		
		260	260	261		
		261	261	262		
		262	262	263		
		263	263	264		
		264	264	265		
		265	265	266		
		266	266	267		
		267	267	268		
		268	268	269		
		269	269	270		
		270	270	271		
		271	271	272		
		272	272	273		
		273	273	274		
		274	274	275		
		275	275	276		
		276	276	277		
		277	277	278		
		278	278	279		
		279	279	280		
		280	280	281		
		281	281	282		
		282	282	283		
		283	283	284		

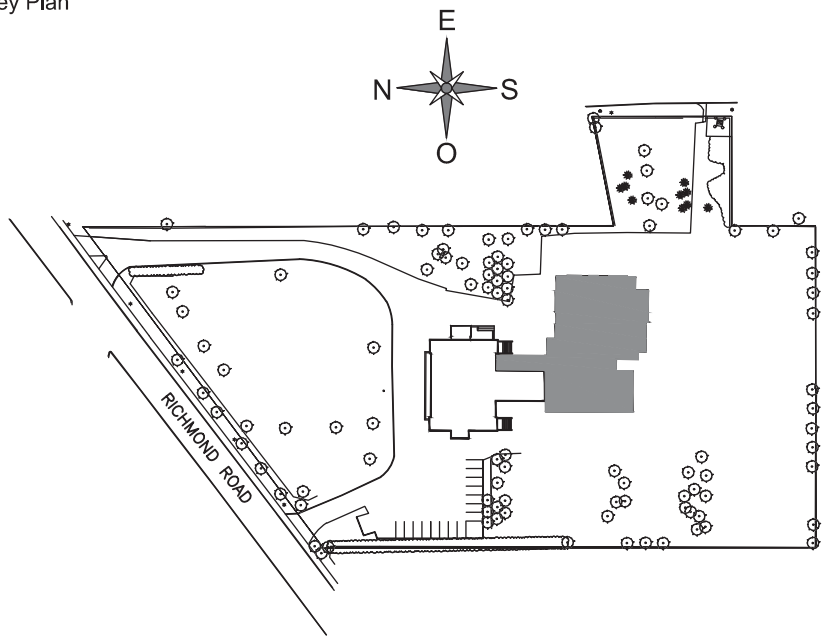
GENERAL NOTE(S):

- 1- UNLESS NOTED OTHERWISE, ALL NORMAL SERVICES ARE CONNECTED ON ELECTRICAL PANEL P-G3-E.

GENERAL NOTE(S):

- 1- ALL CONDUITS TO BE CONCEALED UNLESS OTHERWISE SPECIFIED.
2- PROVIDE TEMPER RESISTANT PLUGS IN THE TWO (2) DAYCARE AREA.
3- LIGHTING CONTROL:
- IN ROOMS WITH DAYLIGHT SENSOR, FIXTURE NEAR WINDOW SHALL DIM ACCORDING TO AVAILABLE DAYLIGHT.
- IN CORRIDORS, WASHROOMS AND STAIRS LIGHTING IS CONTROLLED TROUGHT OCCUPANCY SENSOR.
IN TECHNICAL ROOMS, STORAGE AND OTHER ROOM LIGHTING IS CONTROLLED TROUGHT OCCUPANCY SENSOR. IN OTHER ROOMS, LIGHTS ARE CONTROLLED TROUGHT A SWITCH ANS A OCCUPANCY SENSOR, (MANUAL ON/AUTO OFF)
4- UNLESS NOTED OTHERWISE, ALL LIGHTING IS CONNECTED ON ELECTRICAL PANEL P-G5, CCT 23
5- UNLESS NOTED OTHERWISE, ALL NORMAL SERVICES ARE CONNECTED ON ELECTRICAL PANEL P-G5-S.

Key Plan



SPECIFIC NOTE(S):

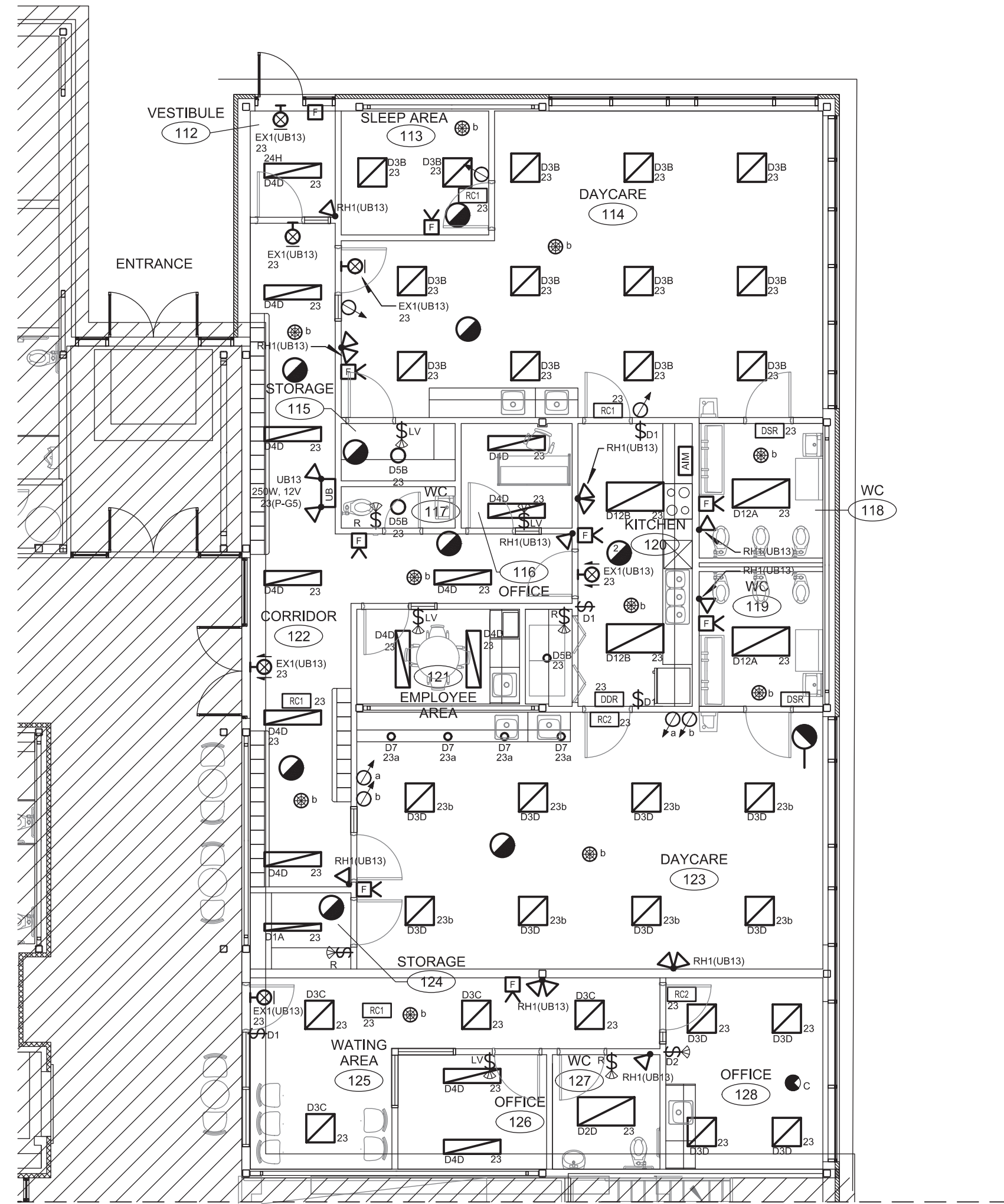
- A- JUNCTION BOX IN CEILING SPACE FOR AUTOMATIC DOOR SYSTEM C/W CONDUIT AND PUSH BUTTONS. INSTALL A TEMPORIZED RELAY ON AUTOMATIC DOORS. COORDINATE EXACT LOCATION OF THE PUSH BUTTONS WITH ARCHITECT.

IDENTIFICATION(S):

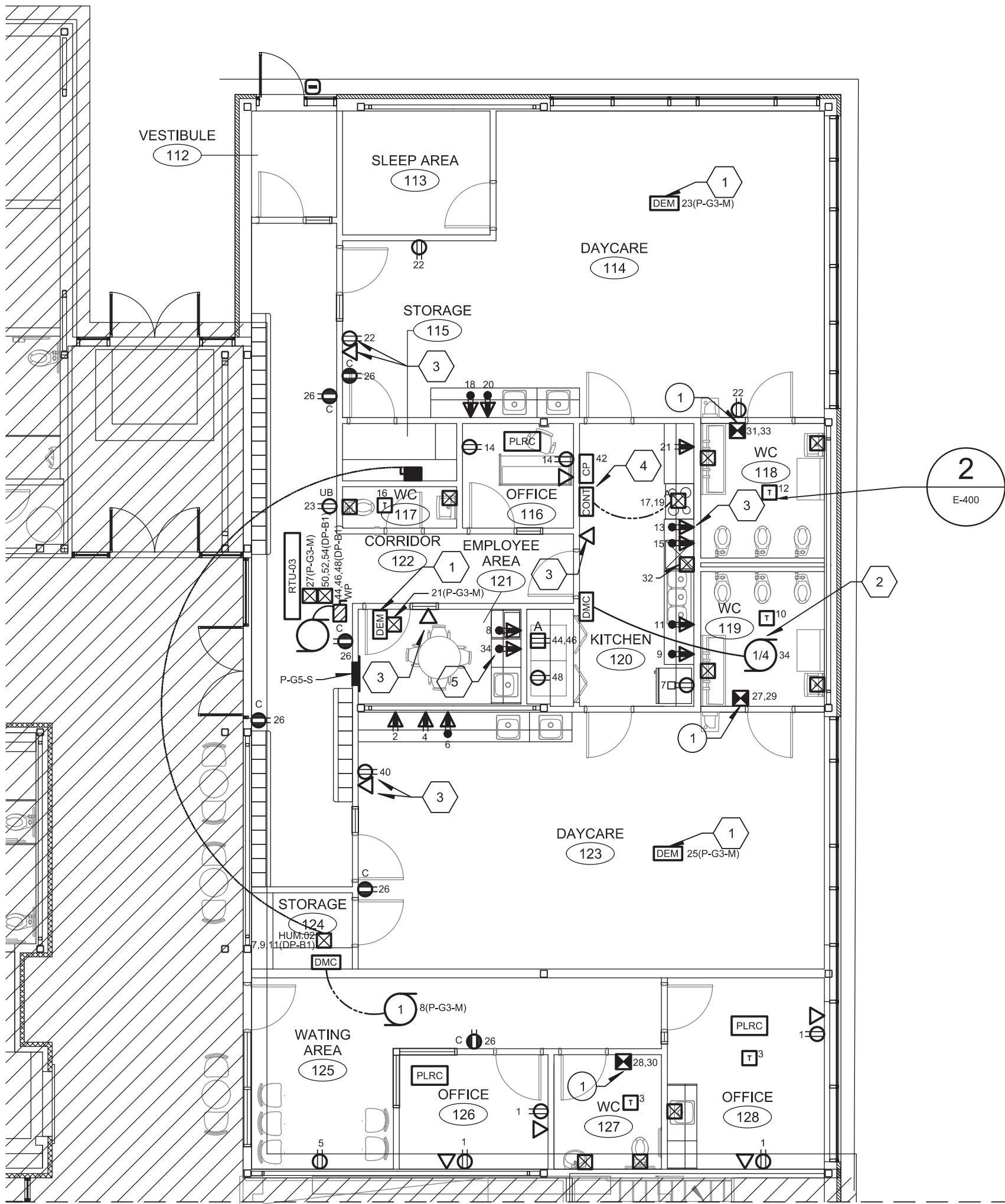
- 1 TO BE INSTALLED IN THE CEILING.
2 ELECTRICAL CONNECTION FOR FAN ON THE ROOF.
3 COORDINATE EXACT HEIGHT AND LOCATION WITH OWNER. PLUG IS APPROXIMATIVELY AT 72" AND DATA AT 60" FROM THE FLOOR.
4 SEE KITCHEN DETAIL.
5 COORDINATE EXACT HEIGHT AND LOCATION WITH OWNER.

REVIEW

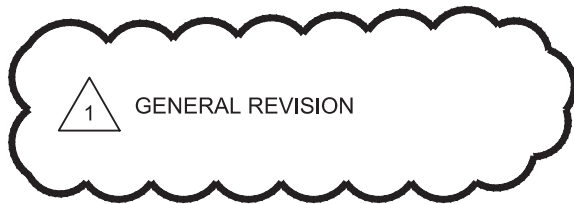
Nº	Date	Description
0	2018-07-25	FOR TENDER
1	2018-08-20	FOR ADDENDUM #1



LIGHTING



SERVICES



THIS DRAWING SHALL NOT BE USED FOR CONSTRUCTION OR INSTALLATION PURPOSES.

MODIFIED

PAGEAU
MOREL
www.pageaumorel.com
Gatineau

Architect

J.R. J.L. Richards
ENGINEERS-ARCHITECTS-PLANNERS
www.jlrichards.ca

Structure

Seal



Project

MAISON DE
DE LA FRANCOPHONIE D'OTTAWA
2720 RICHMOND ROAD, OTTAWA

Title

ELECTRICAL - MULTIDISCIPLINARY
GROUND FLOOR
NEW LAYOUT FOR SEQUENCE 3

Drawn by :

F.BR

Project n°:

7342-001-000

Design by :

J.Rt.

Date :

2018-07-06

Verified by :

M.L.E.

Scale :

1/8" = 1'-0"

Drawing n°

E-901

Revision

1