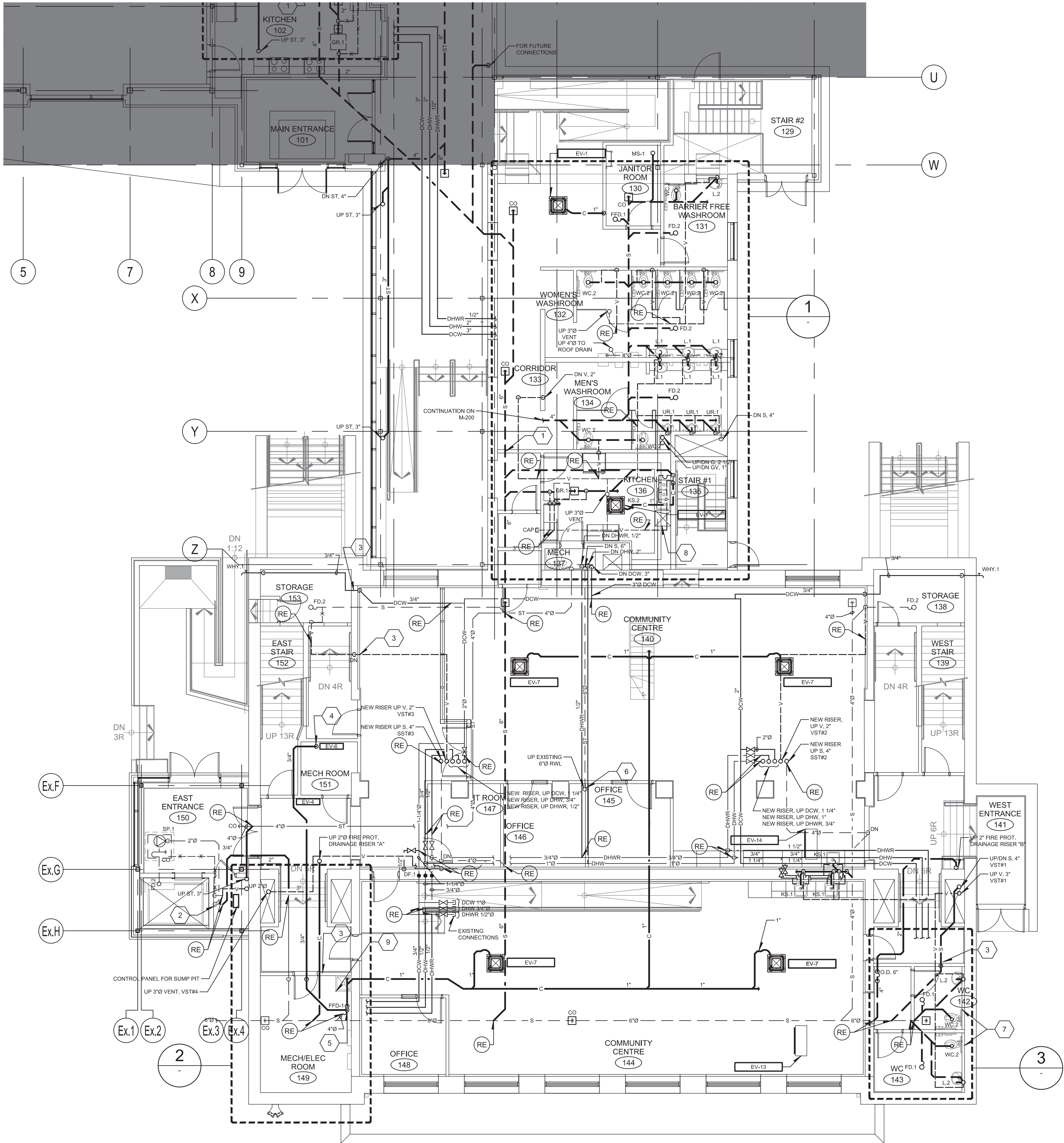
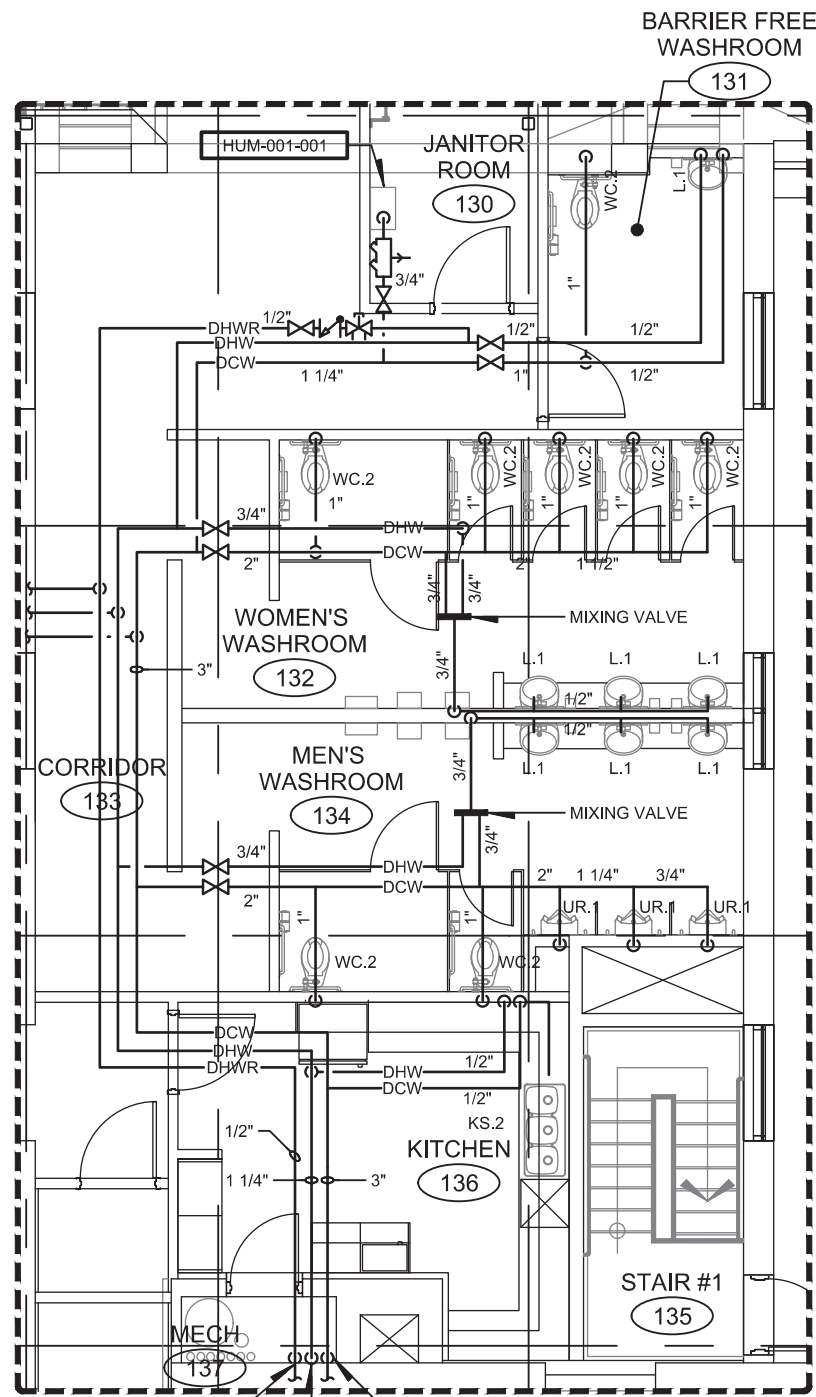


l:\architectes - 5/12/2016 14:44 - 0173412-2720 planmech001\0000M-201 & 202\MP-A4_GFD_1000.dwg

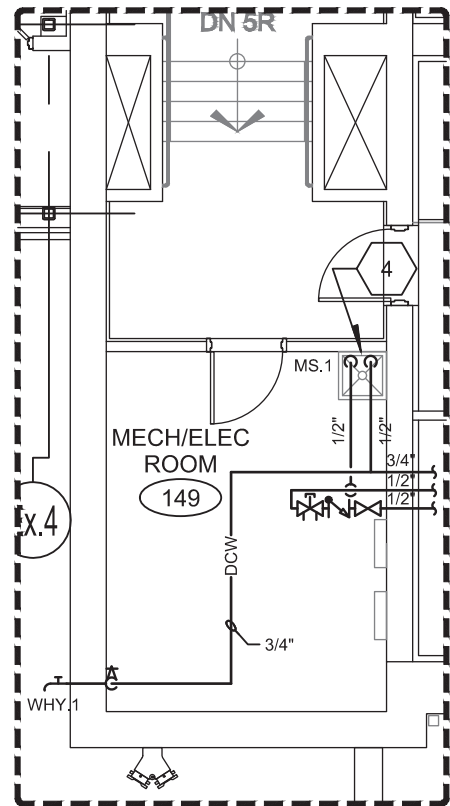


GROUND FLOOR - NORTH



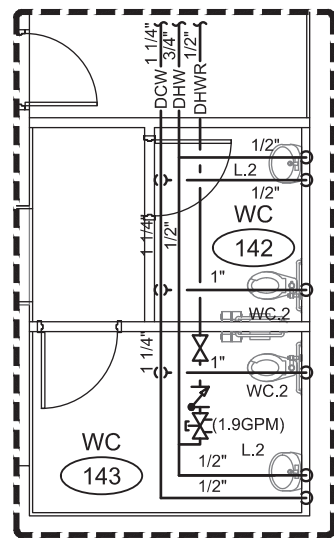
DCW / DHW / DHWR DISTRIBUTION

1 PARTIAL PLAN
SCALE : 1/8"=1'-0"



DCW / DHW / DHWR DISTRIBUTION

2 PARTIAL PLAN
SCALE : 1/8"=1'-0"



DCW / DHW / DHWR DISTRIBUTION

3 PARTIAL PLAN
SCALE : 1/8"=1'-0"

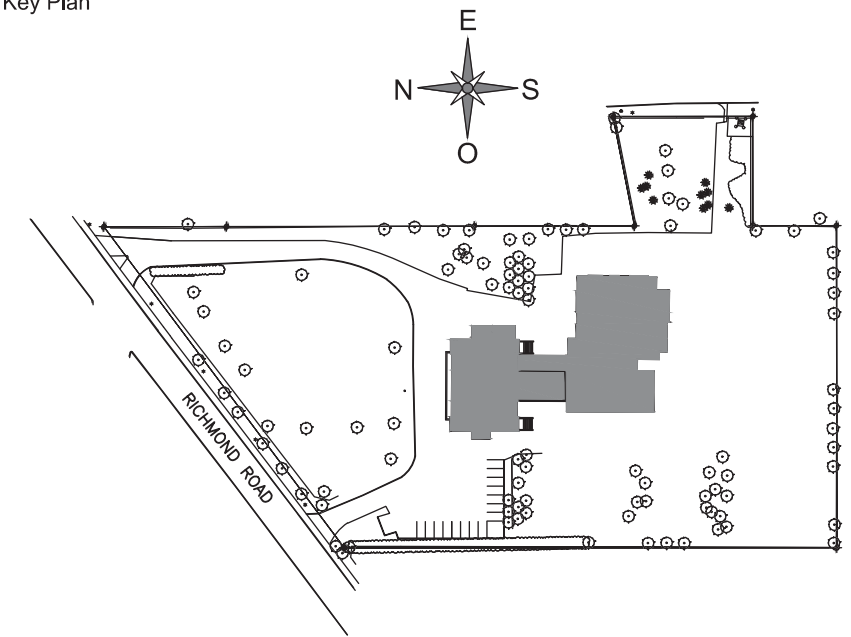
GENERAL NOTE(S):

- 1- ALL EXISTING PIPING, THIS INCLUDES DCW, DHW, VENTS, STORM AND SANITARY DRAINAGE AT CEILING LEVEL TO REMAIN. SOME SECTION WILL REQUIRE SOME REPLACEMENT, SEE NEW LAYOUT.
- 2- SOME REMOVAL WILL BE REQUIRED AS INDICATED ON DRAWING. SOME SECTIONS OF PIPING ARE DAMAGED OR HAVE BEEN PULLED DOWN, THESE SECTIONS ARE TO BE REMOVED.
- 3- ALL EXISTING PIPE SUPPORTS WILL HAVE TO BE VERIFIED AND REPLACED IF NECESSARY. SOME MAY HAVE BEEN RIPPED OUT, PROVIDE FOR 20% REPLACEMENT ON PIPING THAT REMAINS. ALL OTHER PIPE SUPPORTS NOT USED OR DAMAGED ARE TO BE REMOVED COMPLETELY.
- 4- FOR INFORMATION ONLY, PIPING MATERIAL FOR CONDENSATE DRAINAGE SHOWN ON DRAWING IS AS FOLLOWS. MAIN PIPING IS IN XFR PLASTIC PIPING AND SIDE BRANCHES ARE COPPER LINES.
- 5- FOR INFORMATION ONLY, PIPING MATERIAL FOR STORM AND SANITARY DRAINAGE SHOWN ON DRAWING IS AS FOLLOWS. ALL PIPING IS IN XFR PLASTIC PIPE, THIS INCLUDES SIDE BRANCHES UP TO CONNECTION. NO CONNECTIONS OR FLANGE FOR CONNECTION TO A FIXTURE HAVE BEEN INSTALLED, IF ANY REMOVE AND REPLACE.
- 6- SEE DETAILS AND DIAGRAMS FOR ALL ACCESSORIES AND VALVES TO BE PROVIDED AND INSTALLED. DRAWINGS M-210 AND ABOVE.
- 7- NO DOMESTIC WATER LINES, DRAIN LINE OR VENTS ARE TO PASS IN THE OUTSIDE WALL, PIPING TO BE SURFACE MOUNTED. THIS INCLUDES MOST OF THE EXISTING WALLS IN THE EXISTING BUILDING.
- 8- CORES HAVE ALREADY BEEN MADE IN THE FLOOR AND WALLS FOR PAST FIT-UP. REUSE IF POSSIBLE OTHERWISE TO BE CAPPED OFF BY GENERAL CONTRACTOR AND NEW CORES TO BE MADE TO FIT WITH NEW SET-UP.
- 9- FOR SANITARY PIPING (BRANCHES AND MAIN INCLUDING ALL VENTING) SEE DIAGRAM ON M-210 FOR SIZING.
- 10- COORDINATE THE LENGTH OF LOW VOLTAGE WIRE BETWEEN CONVERTER AND EQUIPMENT.

IDENTIFICATION(S):

- 1 SEE MODIFICATIONS TO SANITARY UNDER SLAB ON DRAWING M-200.
- 2 PRESENTLY VENT, SANITARY OUTLET AND CONDUIT FOR ELEVATOR SUMP PIT FLOATS SYSTEM ARE COMING OUT OF THE SLAB AT THIS LOCATION AND ARE CAPPED AT 3' FROM THE GROUND. SEE CONTINUATION ON NEW LAYOUT.
- 3 EXISTING CONCRETE WALL, PROVIDE CORING THROUGH WALL FOR PASSAGE OF PIPING.
- 4 PUMP CONDENSATE FROM WALL MOUNTED A/C UNIT.
- 5 DRAIN CONDENSATE VIA OPEN DRAIN.
- 6 EXISTING STORM RISER IN CAST IRON TO REPLACE WITH THE SAME MATERIAL AS HORIZONTAL SECTION. XFR PLASTIC PIPE FROM THIS LEVEL UP TO ROOF.
- 7 FLOOR SLAB TO BE OPEN (BY GENERAL CONTRACTOR), PREPARE GROUND FOR PLUMBING AND RE-BURY WHEN PLUMBING WORKS ARE COMPLETED. SLAB TO BE RE-DONE AS PER ARCHITECTURAL SPECIFICATIONS.
- 8 SEE DETAILS FOR DRAINAGE OF DISHWASHER, PROVIDE ALL NECESSARY EQUIPMENTS FOR HOT WATER CONNECTION TO DISHWASHER FROM KITCHEN SINK SERVICE. CWV ISOLATION VALVE.
- 9 MOP SINK FAUCETS AND SERVICES ARE SURFACE MOUNTED, PROVIDE AND INSTALL STEEL BRACKETS.

Key Plan



REVIEW

Nº	Date	Description
0	2018-06-01	FOR TENDER

PAGEAU
MOREL
www.pageaumorel.com
Gatineau

Architect

J.R. J.L.Richards
ENGINEERS-ARCHITECTS-PLANNERS
www.jrichards.ca

Structure

Seal



Project

MAISON DE
DE LA FRANCOPHONIE D'OTTAWA
2720 RICHMOND ROAD, OTTAWA

Title

MECHANICAL
PLUMBING
GROUND FLOOR NEW LAYOUT

Drawn by : B. TREMBLAY Project n°: 7342-001-000
Design by : B. TREMBLAY Date : 2018-06-01
Verified by : F. DIONNE Scale : 1/8" = 1'-0"

Drawing n°

M-201

Revision

0