

- 1- ALL BRANCH PIPING TO HEATING ELEMENT IS MIN. 3/4"Ø UNLESS OTHERWISE INDICATED ON DRAWINGS.
- 2- FOR EQUIPMENT DESCRIPTION, SEE SCHEDULE ON DRAWING M-310.

- 3- FOR HWS AND HWR BRANCH PIPING DIMENSIONS, SEE INSTALLATION DETAIL OF HEATING CABINETS ON DRAWING M-310 & 311 AND DIAGRAM FOR BOILER AND PUMPS ACCESSORIES TO BE SUPPLIED AND INSTALLED INCLUDING SIZING.

1 NEW RADIANT HEATING FLOOR. SEE EQUIPMENT SCHEDULE FOR CAPACITIE.

2 IN-WALL PIPING CABINET FOR RADIANT HEATING FLOOR. SEE SHEET M-312 FOR INSTALLATION DETAILS.

- 3 > RADIANT FLOOR. SEE TABLE FOR DETAILS.

[illegible]

**PAGEAU
MOREL**
www.pageaumorel.com
Gatineau

ROOM #	# OF ZONES	# OF CIRCUITS	FLOW RATE (USGPM)	HEAD LOSS (ft. wg.)	SUPPLIED TEMP. (F)	TEMP. DROP
114	1	4	2.20	4.1	120	20
123	1	3	1.73	4.1	120	20



J.L. Richards
ENGINEERS - ARCHITECTS - PLANNERS
www.jlrichards.ca

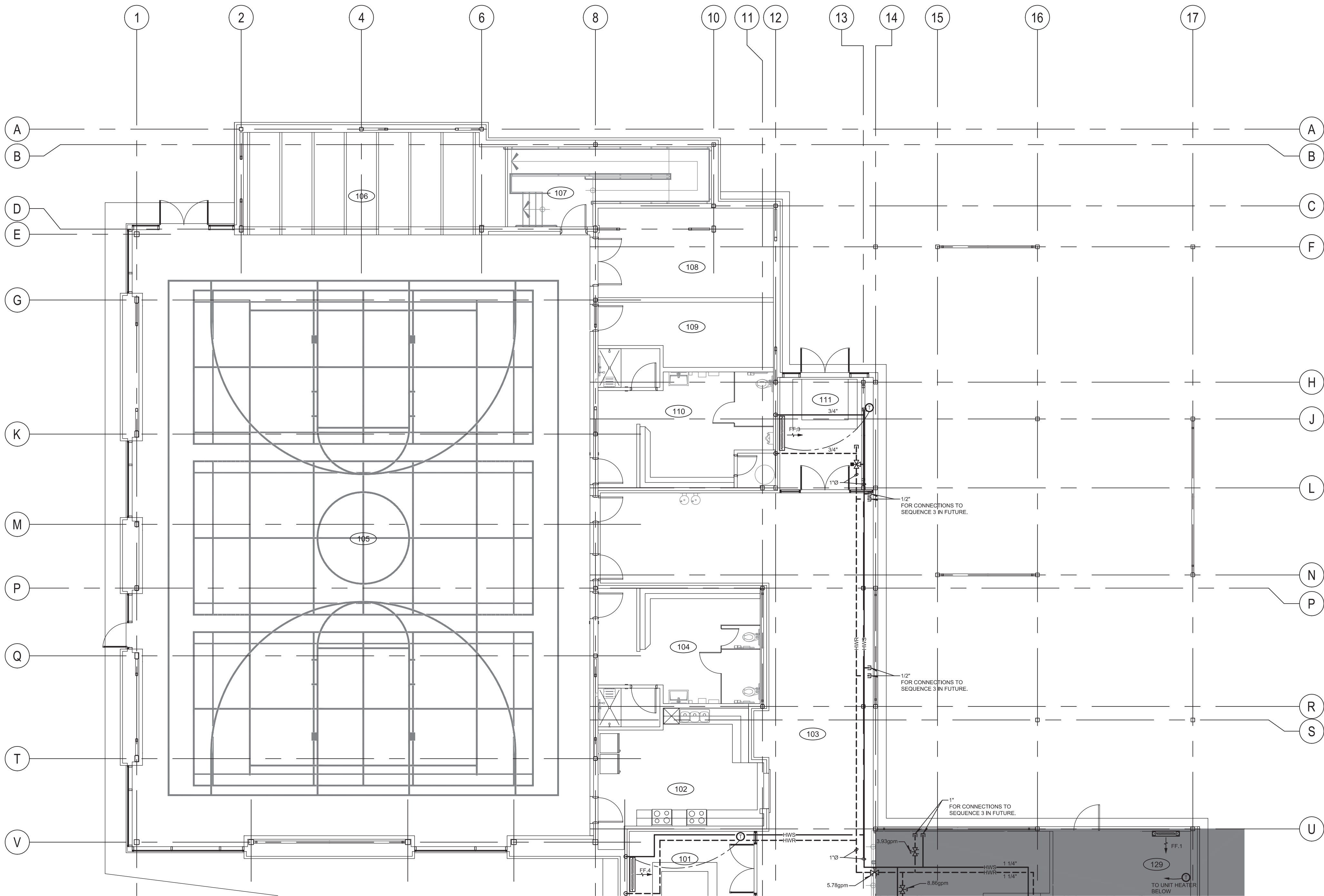
MAISON DE
DE LA FRANCOPHONIE D'OTTAWA
2720 RICHMOND ROAD, OTTAWA

Title

MECHANICAL
HEATING AND COOLING
GROUND FLOOR NEW LAYOUT

Drawn by :	B. TREMBLAY	Project n°:	7342-001-000
Design by :	B. TREMBLAY	Date :	2018-06-01
Verified by :	F. DIONNE	Scale :	1/8" = 1'-0"

Revision



GROUND FLOOR - SOUTH