

- 1- PROVIDE FOR AND INSTALL ACOUSTIC INSULATION IN ALL CONDUITS AFTER V.V.B. BOXES, ON M-410 AND RETURN AIR CONDUITS, TYPICAL FOR ALL FLOORS.
- 2- SEE SCHEDULES ON M-410 FOR EQUIPMENT DESCRIPTION, DETAILS ON M-411.
- 3- PROVIDE AND INSTALL HARD TRANSPARENT COVERS OVER SENSORS (X3) IN THE GYMNASIUM.
- 4- 1" ACOUSTIC INSULATION ON THE RETURN OF ALL RTU UNITS. FOR A LENGTH OF AT LEAST 20 FEET, AS WELL AS AFTER VAV BOXES. DUCT DIMENSIONS ARE ALL FOR THE FREE AREA, AND DO NOT ACCOUNT FOR THE INSULATION, WHERE REQUIRED.

- 1 EXISTING CONCRETE OR BLOCK WALL TO BE PIERCED FOR PASSAGE OF DUCTS AND CONDUITS.
- 2 MAIN CONTROL PANEL FOR ALL EVAPORATORS, SEE DIAGRAM ON M-501. FINAL POSITION TO BE COORDINATED ON SITE WITH OTHER TRADES.
- 3 MAIN CONTROL PANEL FOR MAKE UP AIR UNIT MUA-001-002. FINAL POSITION TO BE COORDINATED ON SITE WITH OTHER TRADES.
- 4 GRILLE TO BE INSTALLED 305mm FROM FINISHED FLOOR.
- 5 PROVIDE A SECTION OF THERMALLY INSULATED CONDUIT C/W INSULATED MOTORIZED DAMPER AND ACTUATOR. (SEE CONTROL DIAGRAM ON M-500)
- 6 PROVIDE AND INSTALL A FIRE DAMPER TYPE "B".
- 7 PROVIDE A NEW WALL OPENING 24"x24" AT THE BOTTOM OF THE EXISTING CONCRETE WALL. MAINTAIN A MINIMUM OF 6" FROM THE FLOOR TO THE SIDE OF THE FRAME. SUPPLY AND INSTALL A BIRD SCREEN C/W "F" FRAME ON BOTH SIDES OF THE WALL.
- 8 EXISTING EQUIPMENT ALREADY INSTALLED ON NEW 6" HIGH HOUSEKEEPING PAD, SEE SPEC SHEET FOR EXISTING EQUIPMENT DETAILS.
- 9 NEW LOUVER AND BOTH CONDUITS (SUPPLY AND RETURN) TO BE LINED UP VERTICALLY. PASSAGE OF CONDUITS BELOW THE NEW LOUVER.
- 10 FIRE RATED INSULATION, SEE SPECIFICATIONS. INSULATE FROM EXHAUST FAN TO EXTERIOR OUTLET.
- 11 DRAIN PAN FOR STEAM DISTRIBUTOR. NO ACOUSTIC INSULATION IN THIS SECTION.

[illegible]

**PAGEAU
MOREL**
www.pageaumorel.com
Gatineau



J.L. Richards
ENGINEERS - ARCHITECTS - PLANNERS
www.jlrichards.ca

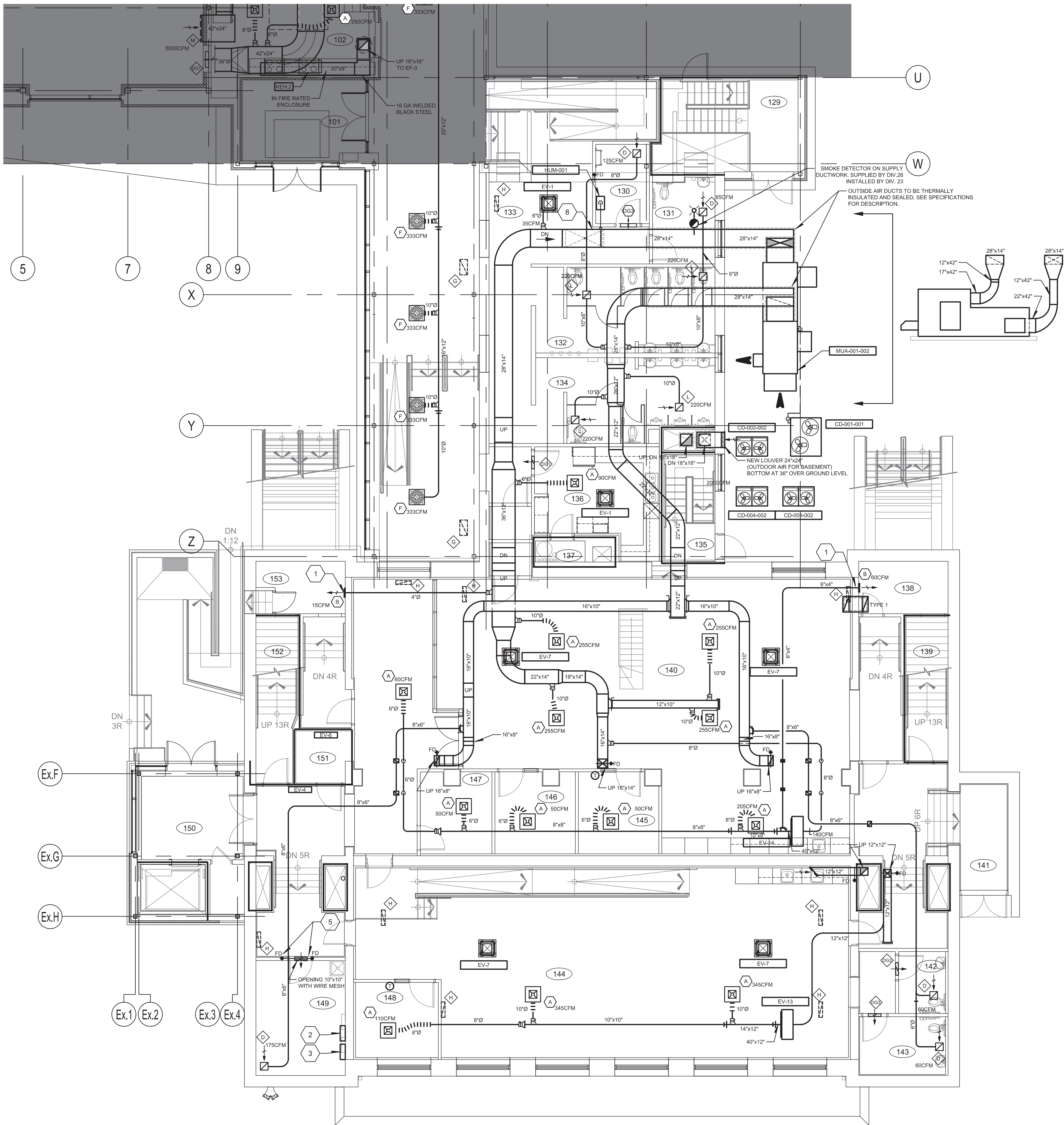
MAISON DE
DE LA FRANCOPHONIE D'OTTAWA
2720 RICHMOND ROAD, OTTAWA

Drawn by :	B. TREMBLAY	Project n°:	7342-001-000
Design by :	B. TREMBLAY	Date :	2018-06-01
Verified by :	F. DIONNE	Scale :	1/8" = 1'-0"

Revision

M-401

0



GROUND FLOOR - NORTH