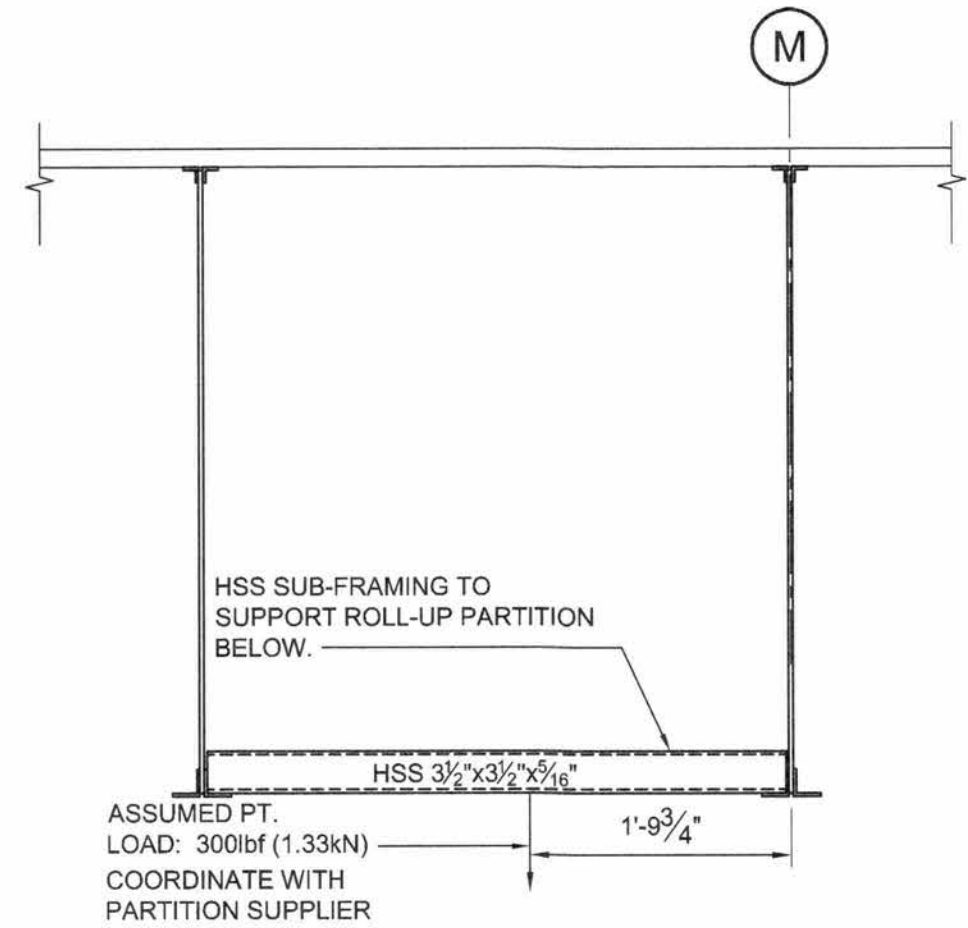
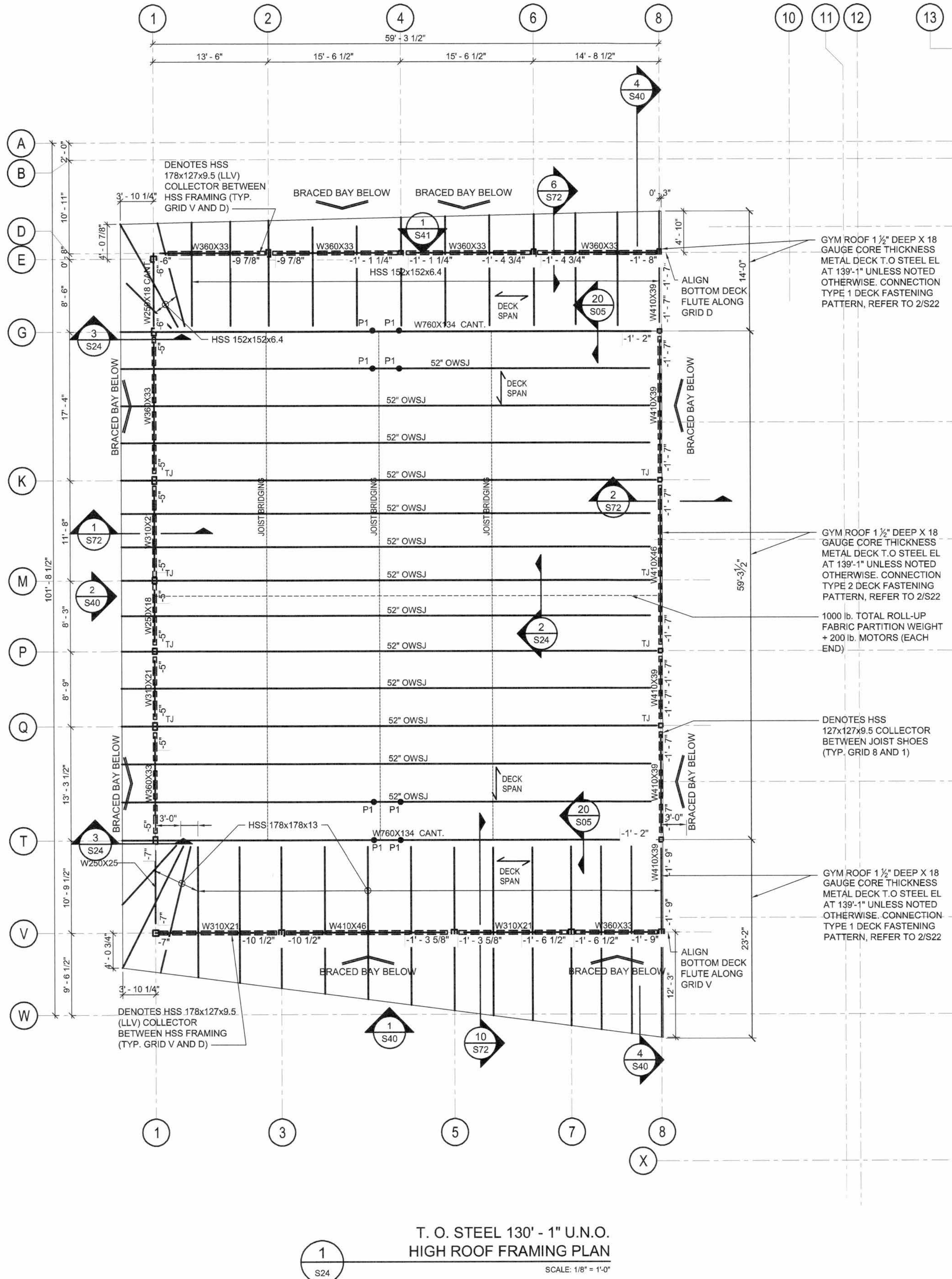
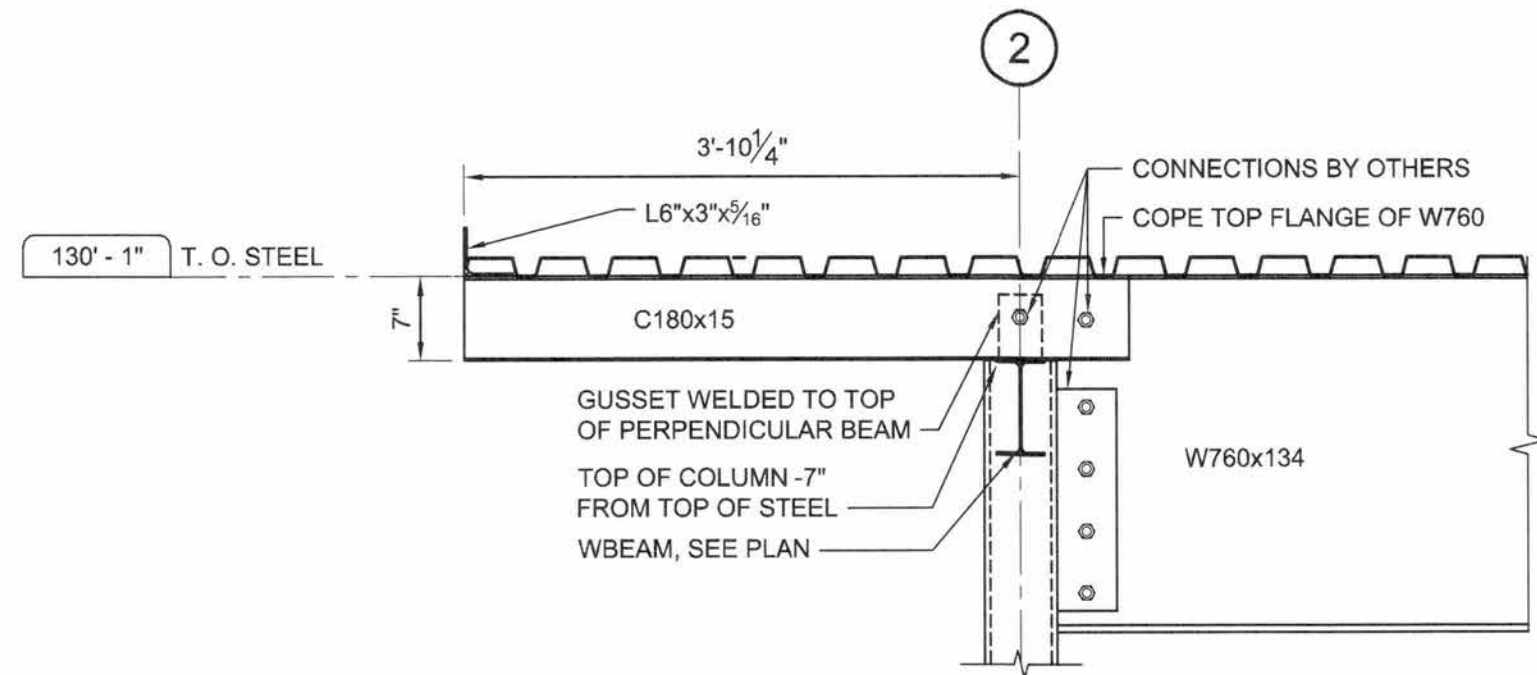


File Location: r:\27000\27672-000-1 - cspco - 2720 richmond road (info)\JLR DWG\Struct\27672 S24.dwg



NOTE: PROVIDE HSS @ MAX 15'-0" CRS. OR AS SPECIFIED BY ROLL-UP FABRIC PARTITION MANUFACTURER.



- NOTES:
- SEE DRAWING S01 FOR GENERAL NOTES.
 - SEE S04 FOR DESIGN ROOF LOADS.
 - PROVIDE CONTINUOUS L6x3x3/8" ANGLE AROUND ROOF PERIMETERS.
 - REFER TO GROUND FLOOR PLAN (S21) FOR COLUMN SIZES U.N.O.
 - ROOF AND 5" DEEP JOIST SHOE FOR THE GYM ROOF.
 - CONT. PERIMETER ANGLE TO BE SPliced WITH SUFFICIENT WELDING TO TRANSFER THE FULL TENSILE CAPACITY OF THE ANGLE.
 - PROVIDE CONCENTRATION OF WELD BETWEEN BRACED BAYS & PERIMETER ANGLE. WELD TO BE A MINIMUM OF 1/2" FILLET 12" LONG BOTH SIDES OF PERIMETER ANGLE.
 - BASKETBALL NET SUSPENDED FROM STEEL STRUCTURE WITH (4) ATTACHMENT POINTS TO BE USED BY BASKETBALL NET SUPPLIER. P1 DENOTES LOCATIONS OF POINT LOADS ON BOTTOM CHORD OF JOIST. PROVIDE STEEL STRUCTURE TO SUIT AND COORDINATE EXACT LOCATION OF ATTACHMENT POINTS WITH NET SUPPLIER.
- TOTAL BASKETBALL NET LIVE LOAD: 2000lb (9.0kN)
- PROVIDE HSS 127x127x9.5 COLLECTOR BETWEEN JOIST SHOES AS DENOTED ON PLAN. WELD HSS TO SUPPORTING STEEL WITH 1/2" FILLET WELD ON BOTH SIDES X 2" @ 3' CRS.

1	FOR TENDER	01/06/18
No.	ISSUE / REVISION	DDMMYY

This drawing is copyright protected and may not be reproduced or used for purposes other than execution of the described work without the express written consent of J.L. Richards & Associates Limited.

VERIFY SHEET SIZE AND SCALES. BAR TO THE RIGHT IS 1" IF THIS IS A FULL SIZE DRAWING.

SCALE: 0 1'

CLIENT: AS NOTED

 Conseil des écoles publiques de l'Est de l'Ontario

CONSULTANT:

 McIntosh Perry Consulting Engineers Ltd.


CONSULTANT: www.jlrichards.ca

 J.L. Richards ENGINEERS - ARCHITECTS - PLANNERS


CONSULTANT:

 PAGEAU MOREL
www.pageaumorel.com
Gatineau

PROFESSIONAL STAMP

 M.J. BURTT
100111392
PROVINCE OF ONTARIO

PROJECT NORTH



PROJECT:

MAISON DE LA FRANCOPHONIE D'OTTAWA

2720 RICHMOND ROAD, OTTAWA

DRAWING:

HIGH ROOF FRAMING PLANS (SOUTH)

DESIGN: SDB/VR	DRAWING #:
DRAWN: JPS	
CHECKED: MJB	
JLR #: 27672-001	S24

PLOT DATE: May 31, 2018 1:35:51 PM