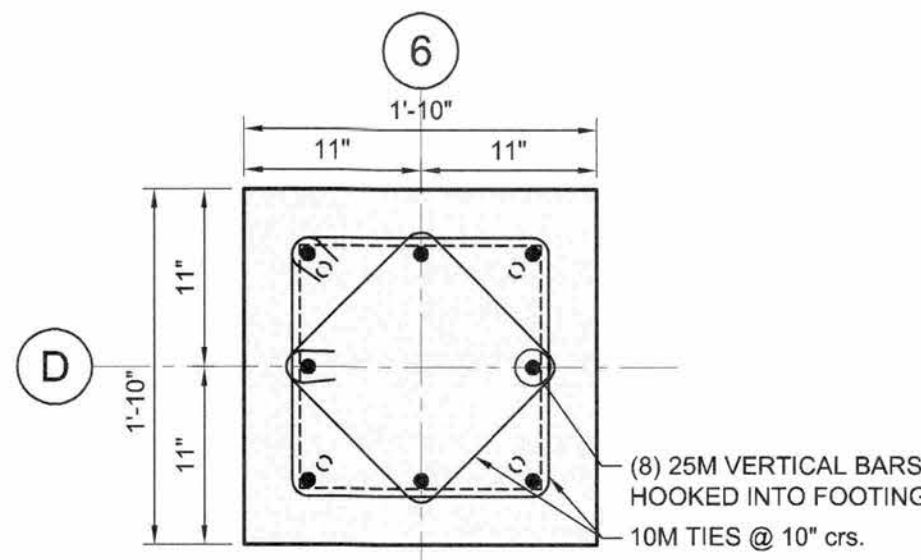
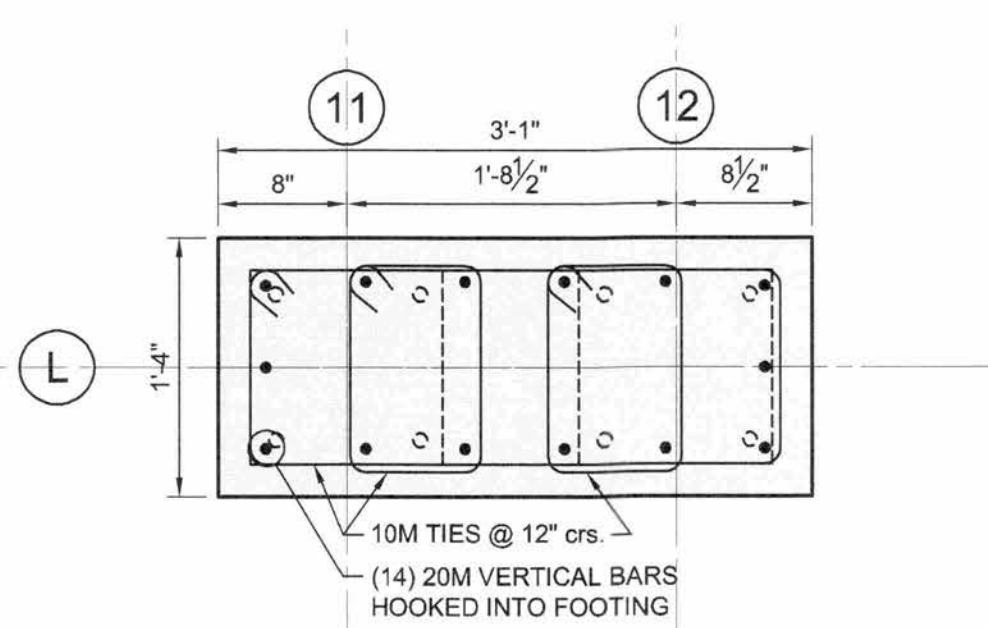


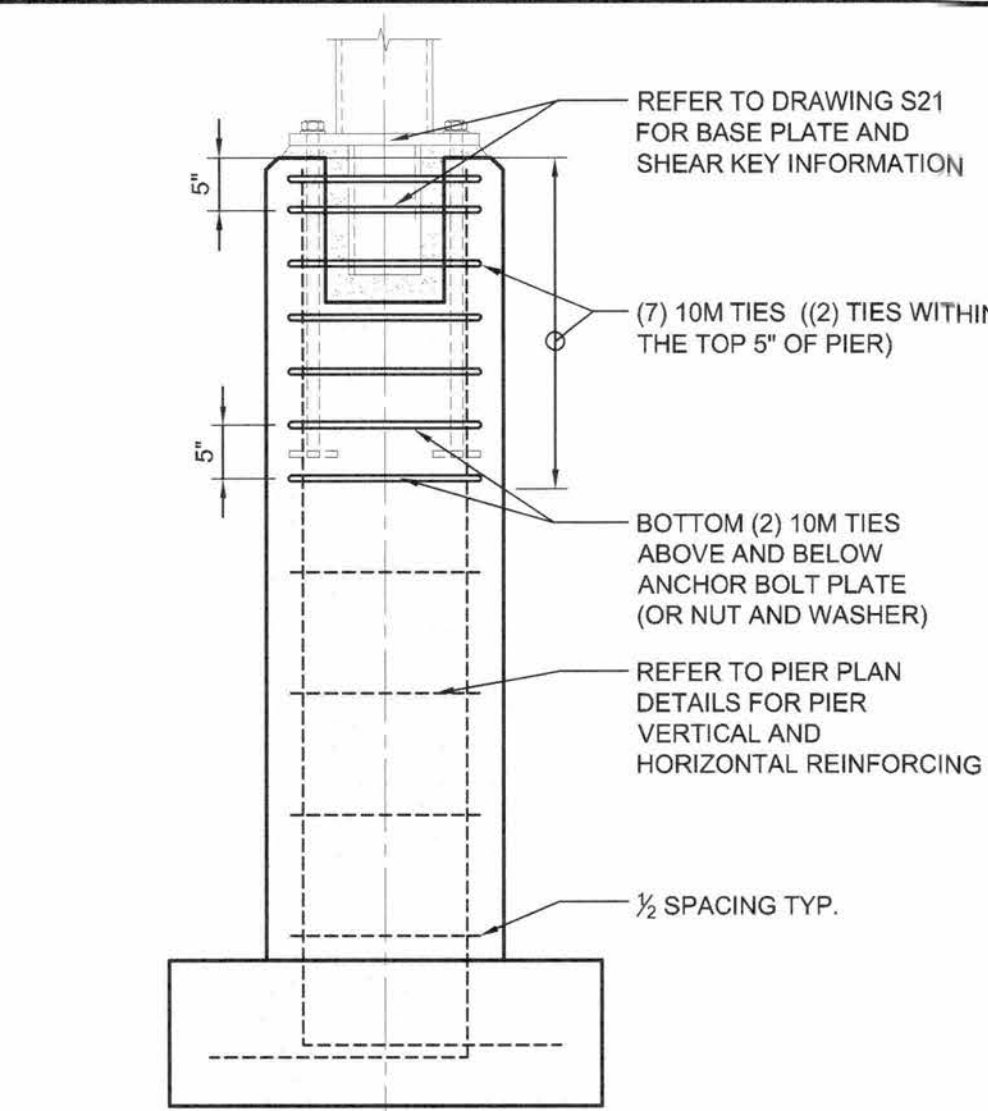
CONCRETE PIER - P1
SCALE: 1" = 1'-0"



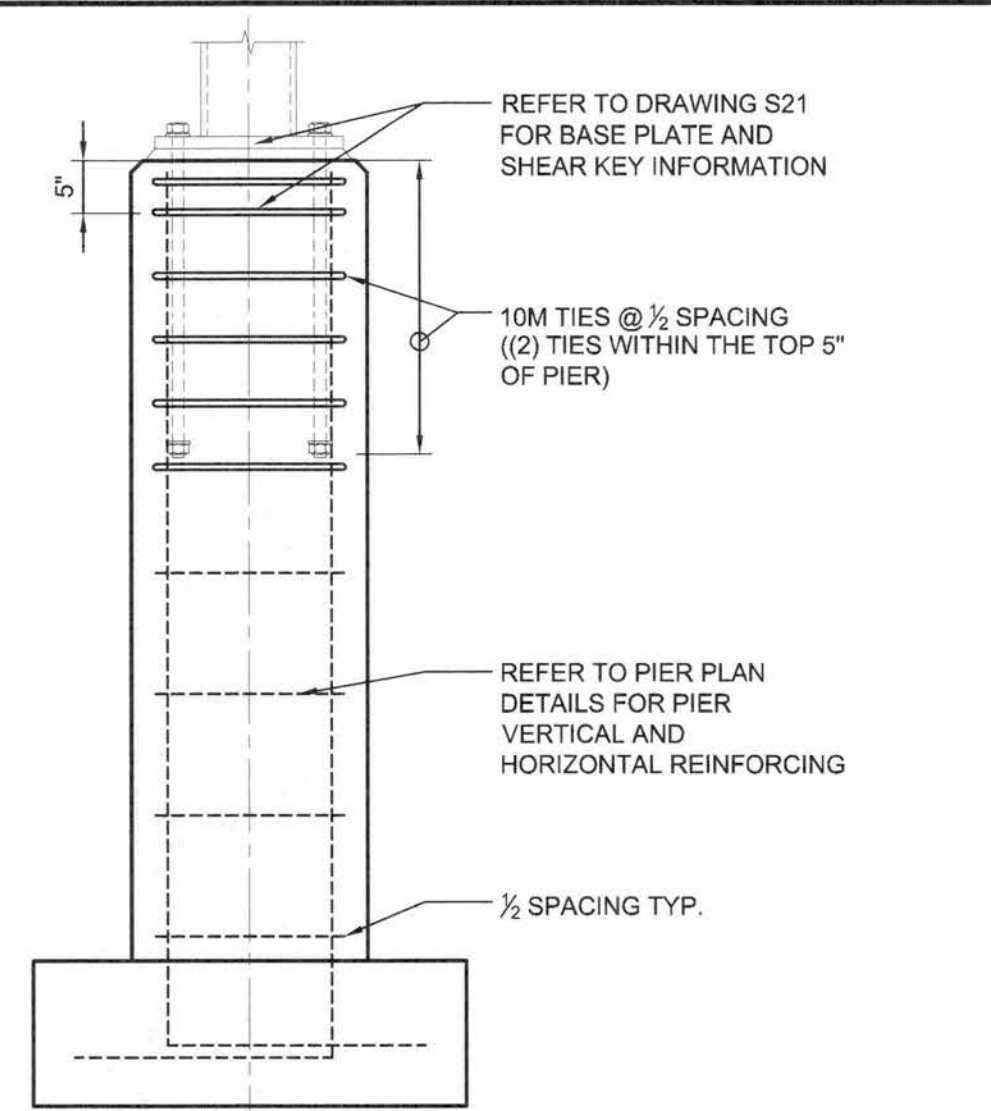
CONCRETE PIER - P2
SCALE: 1" = 1'-0"



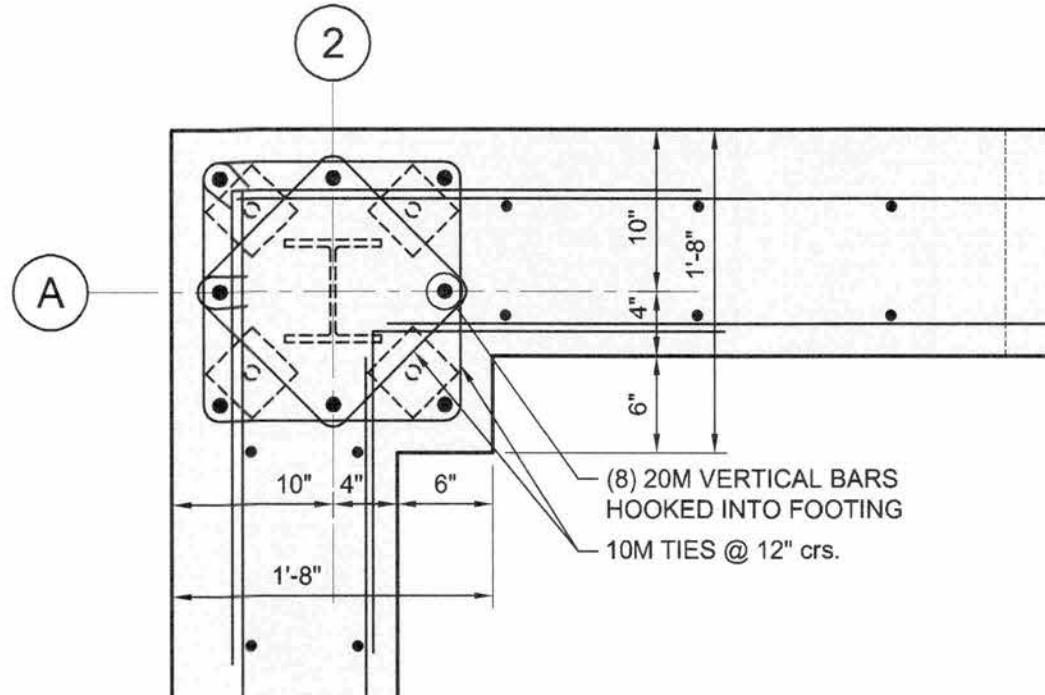
CONCRETE PIER - P3
SCALE: 1" = 1'-0"



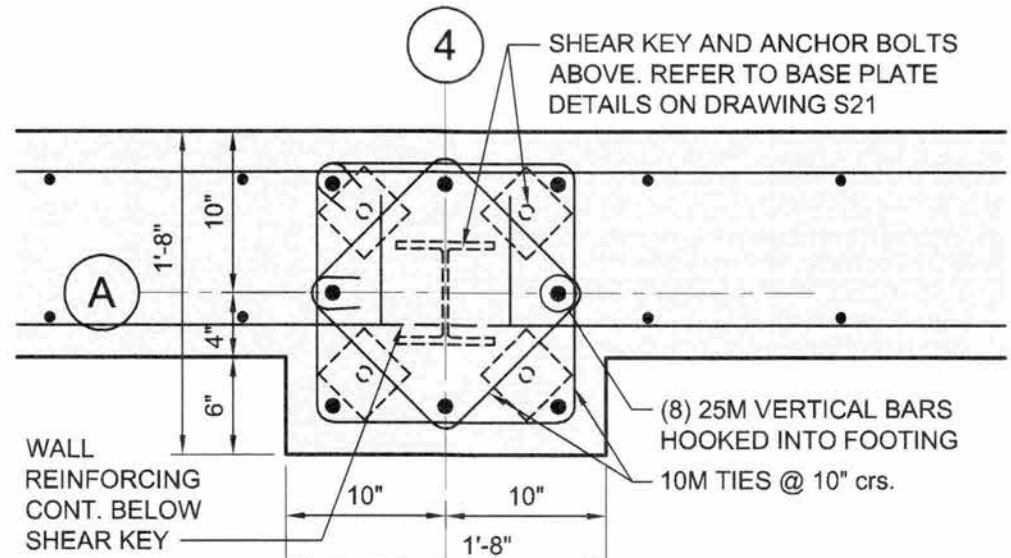
1 TYPICAL TIE DIAGRAM AT SHEAR KEY
SCALE: 3/4" = 1'-0"



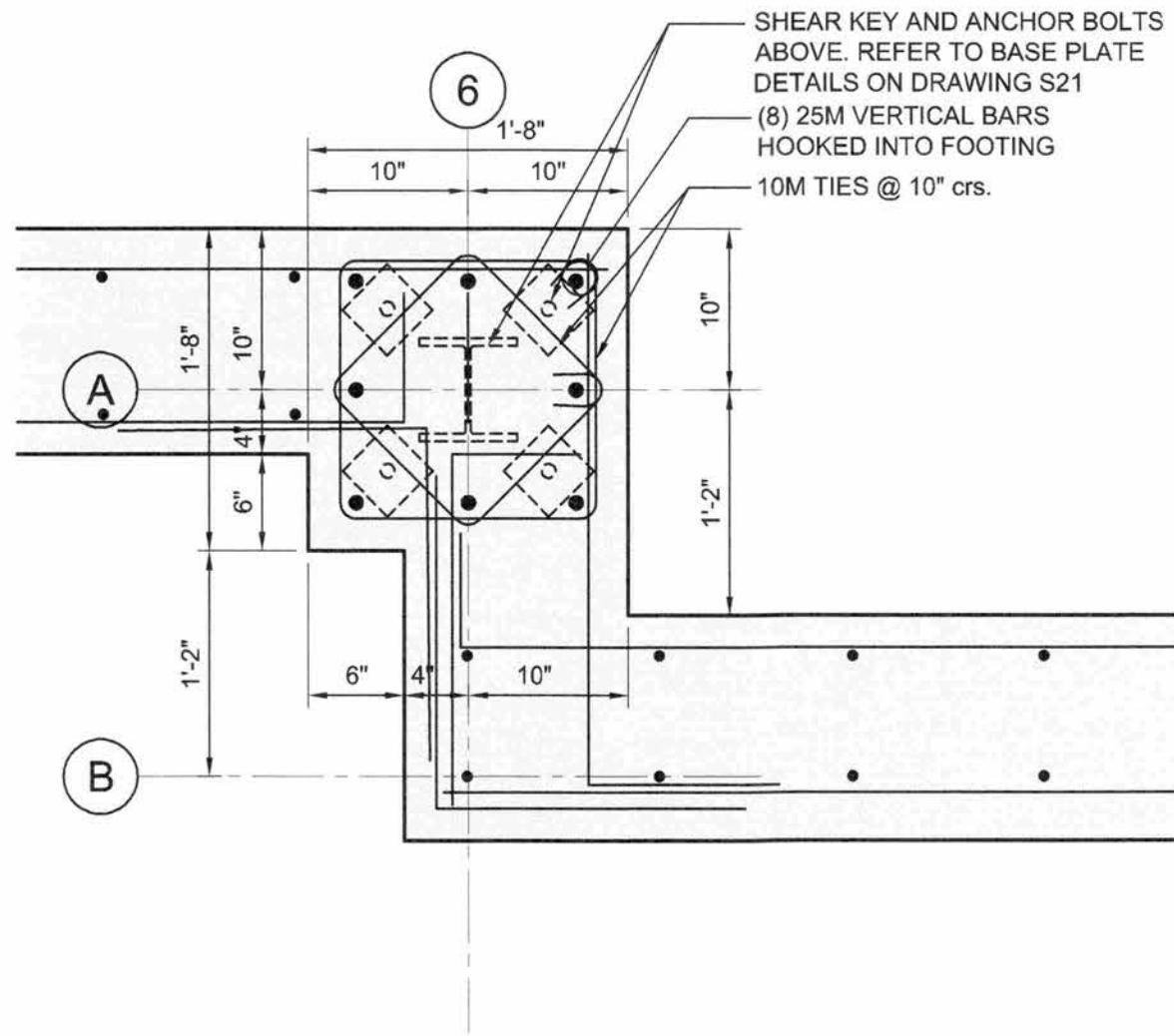
2 TYPICAL TIE DIAGRAM AT NON-SHEAR KEY
SCALE: 3/4" = 1'-0"



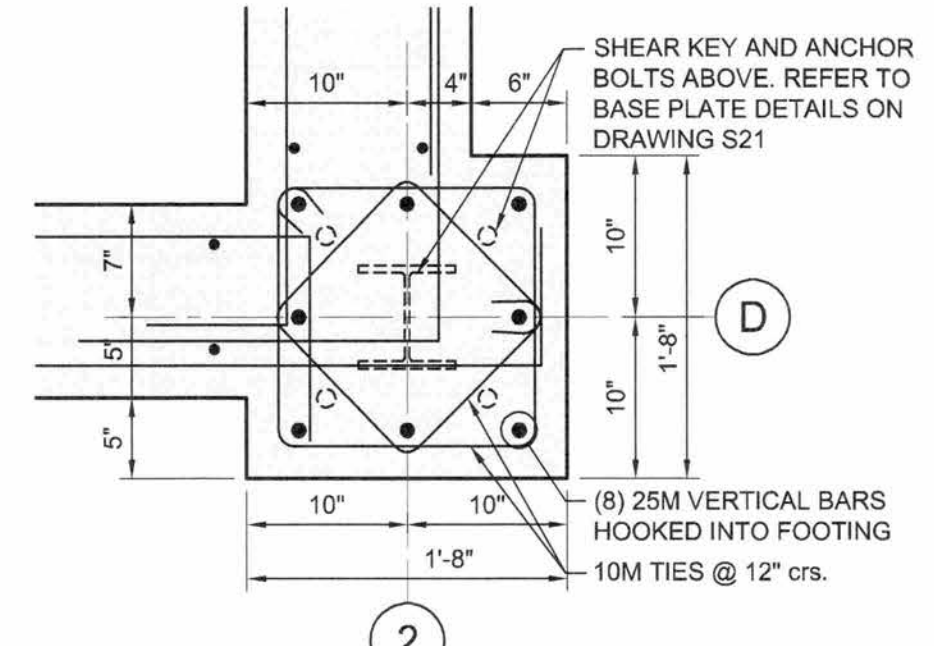
CONCRETE PIER - P4
SCALE: 1" = 1'-0"



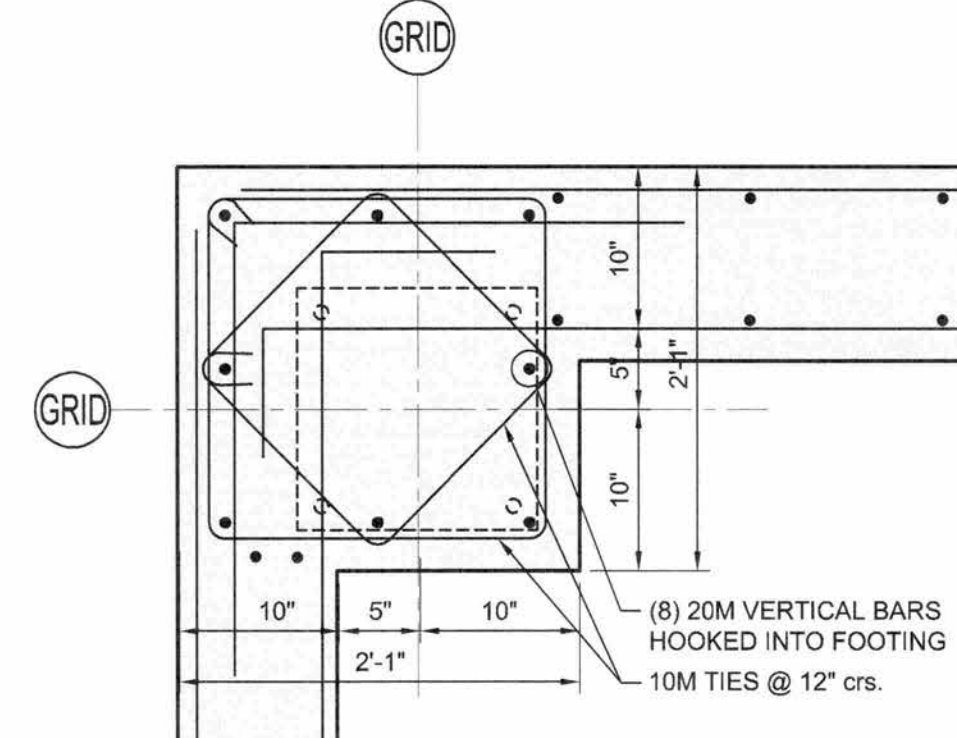
CONCRETE PIER - P5
SCALE: 1" = 1'-0"



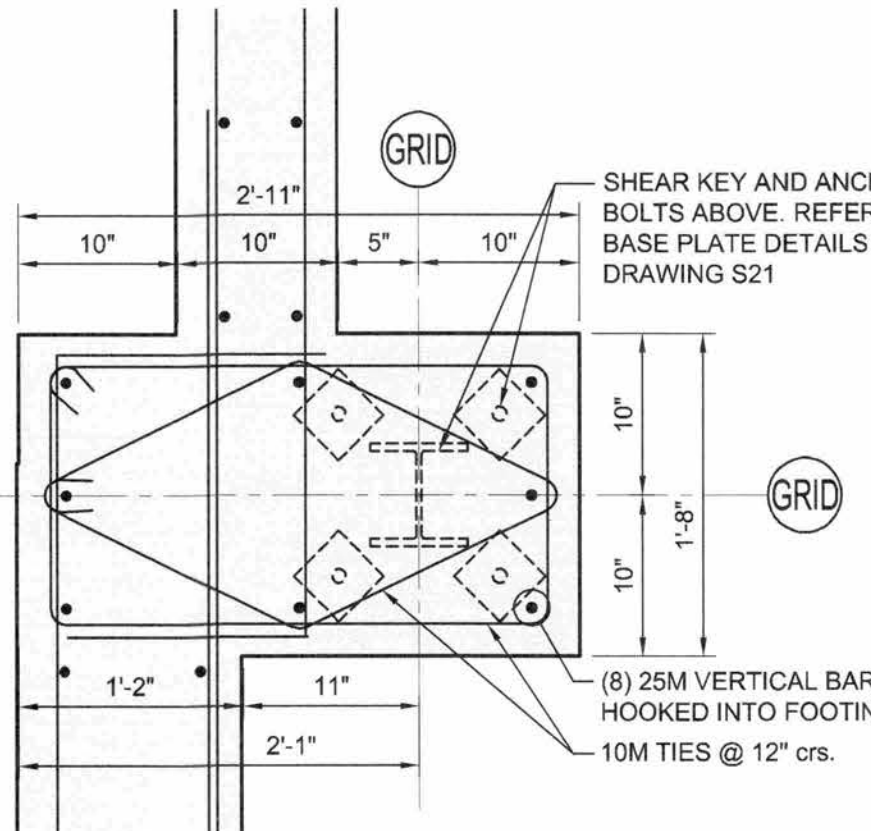
CONCRETE PIER - P6
SCALE: 1" = 1'-0"



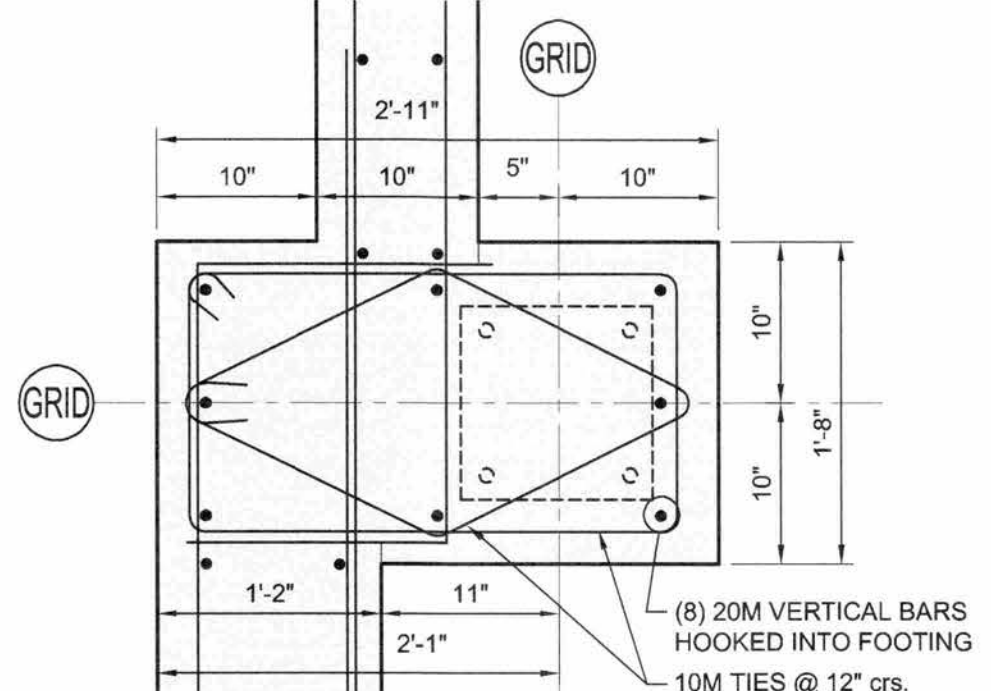
CONCRETE PIER - P7
SCALE: 1" = 1'-0"



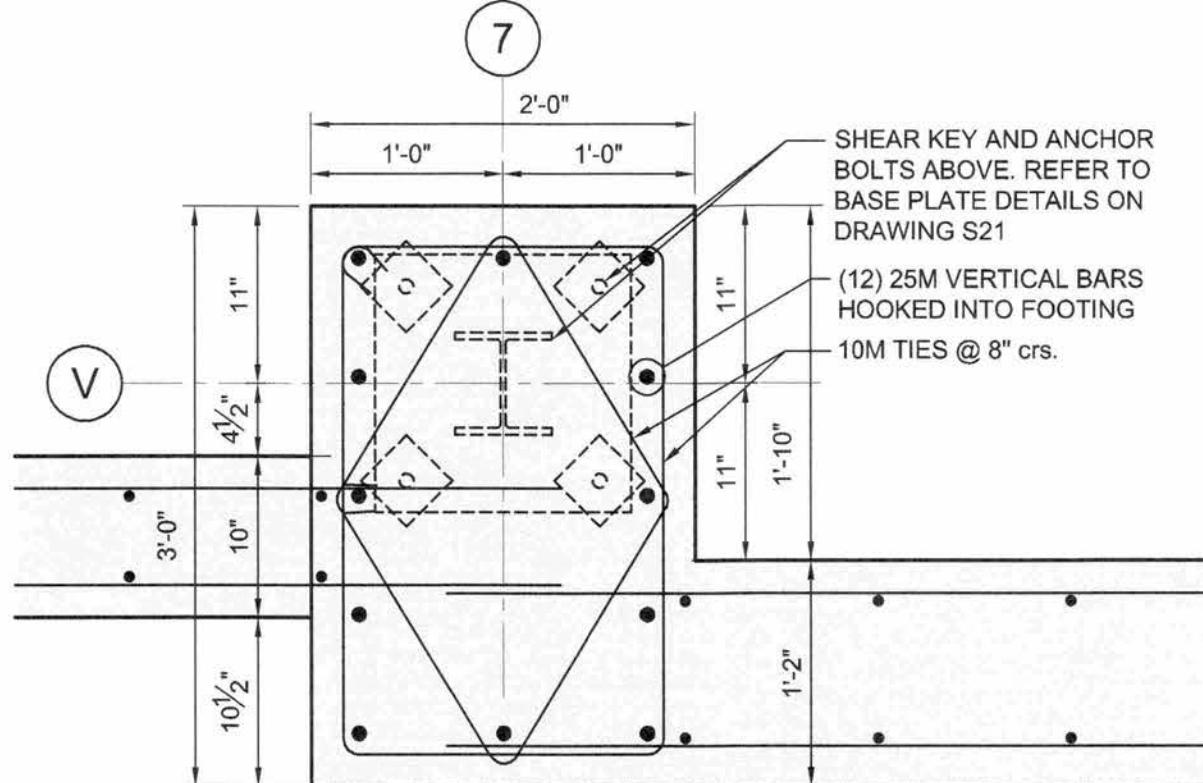
CONCRETE PIER - P8
SCALE: 1" = 1'-0"



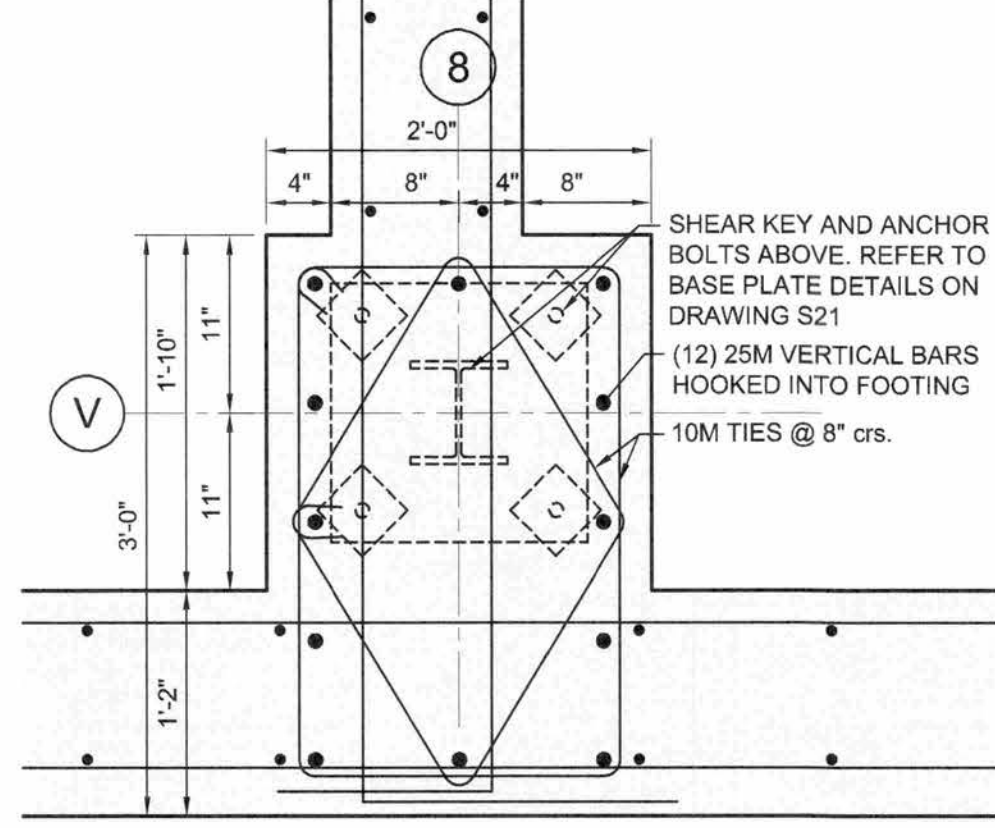
CONCRETE PIER - P9
SCALE: 1" = 1'-0"



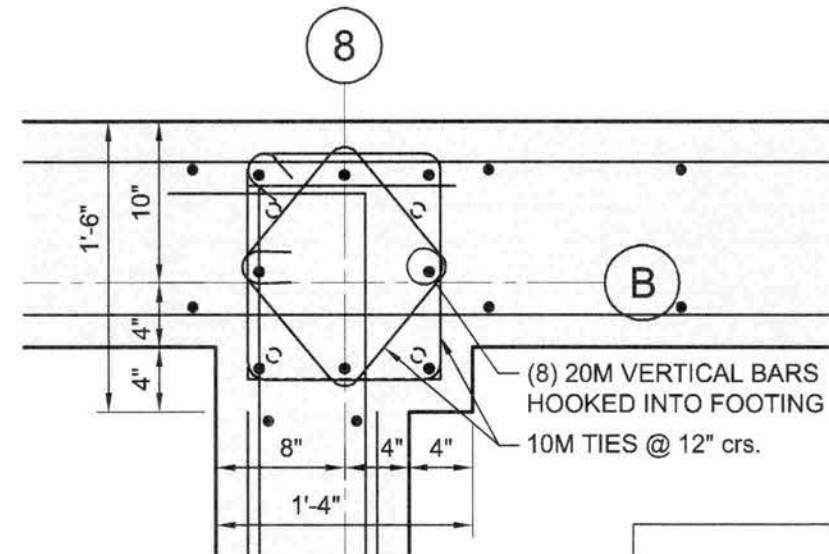
CONCRETE PIER - P10
SCALE: 1" = 1'-0"



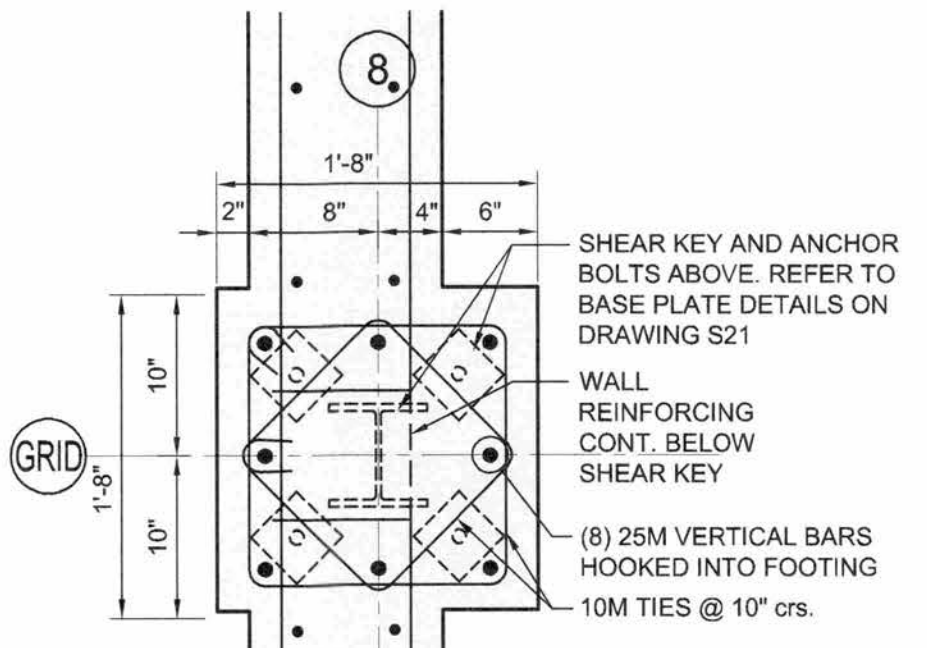
CONCRETE PIER - P11
SCALE: 1" = 1'-0"



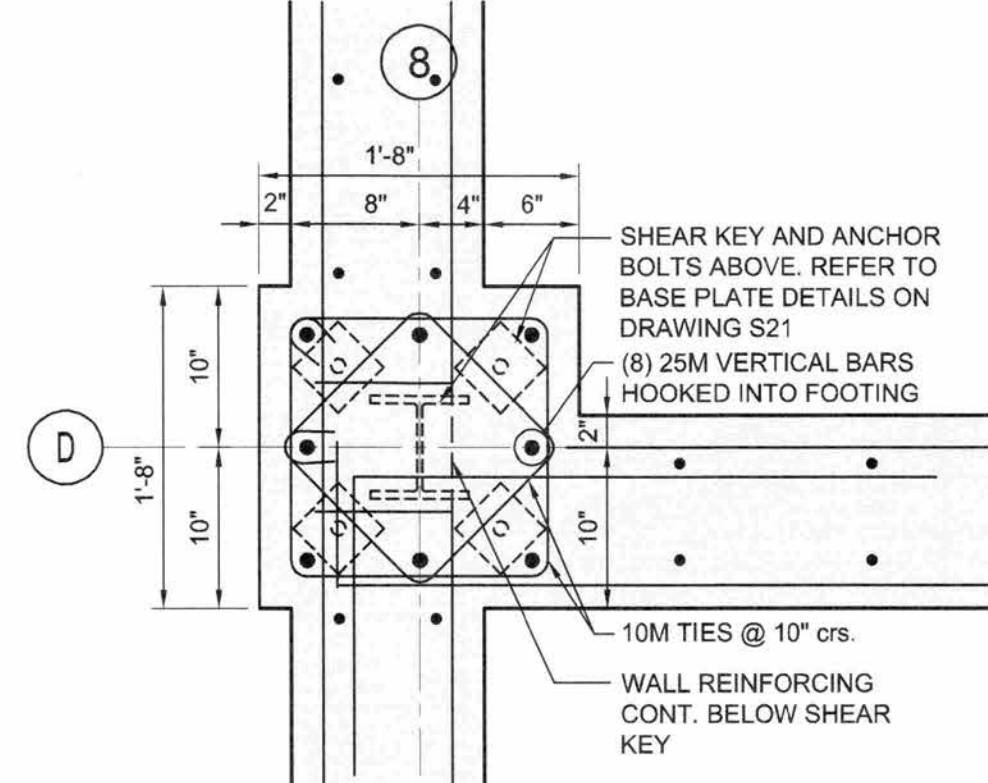
CONCRETE PIER - P12
SCALE: 1" = 1'-0"



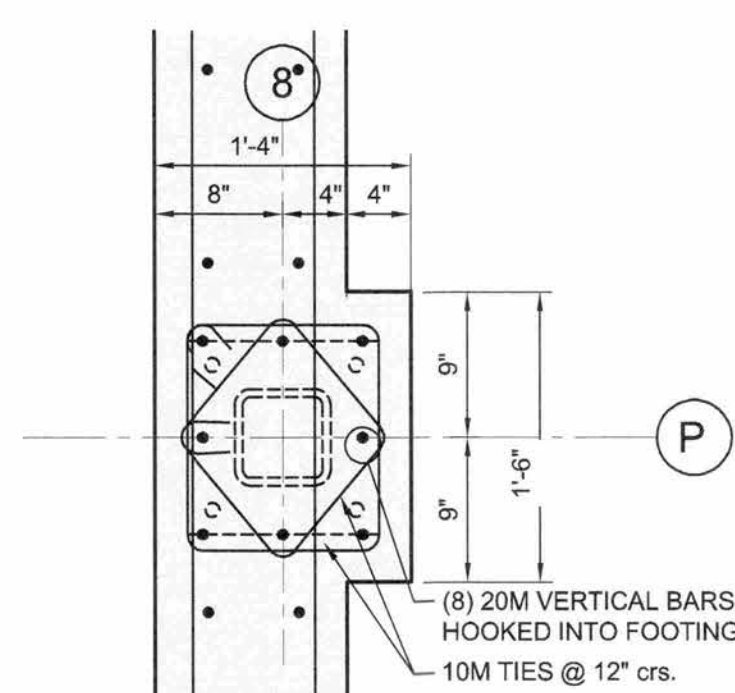
CONCRETE PIER - P13
SCALE: 1" = 1'-0"



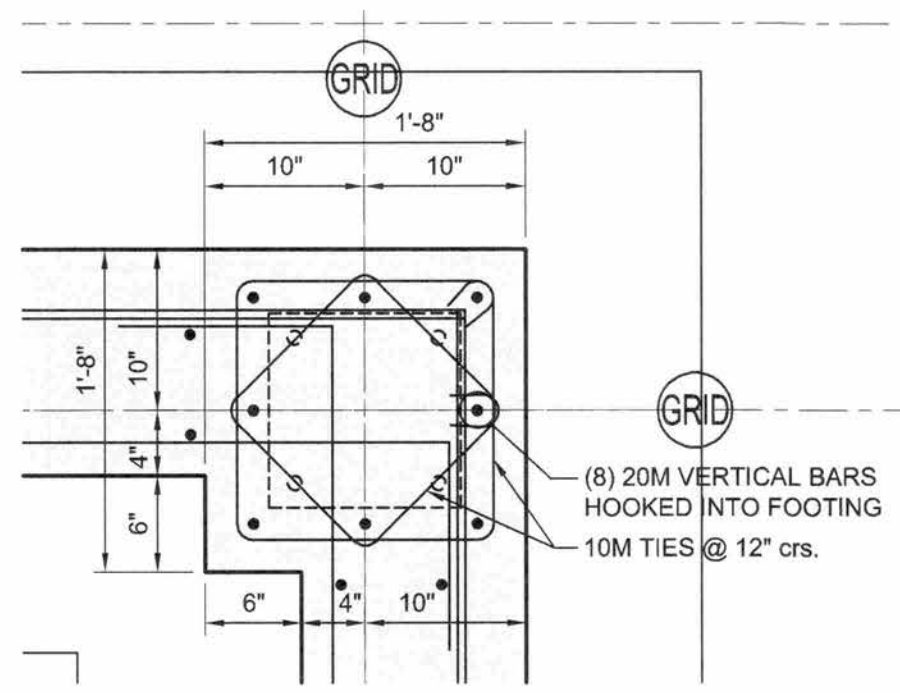
CONCRETE PIER - P14
SCALE: 1" = 1'-0"



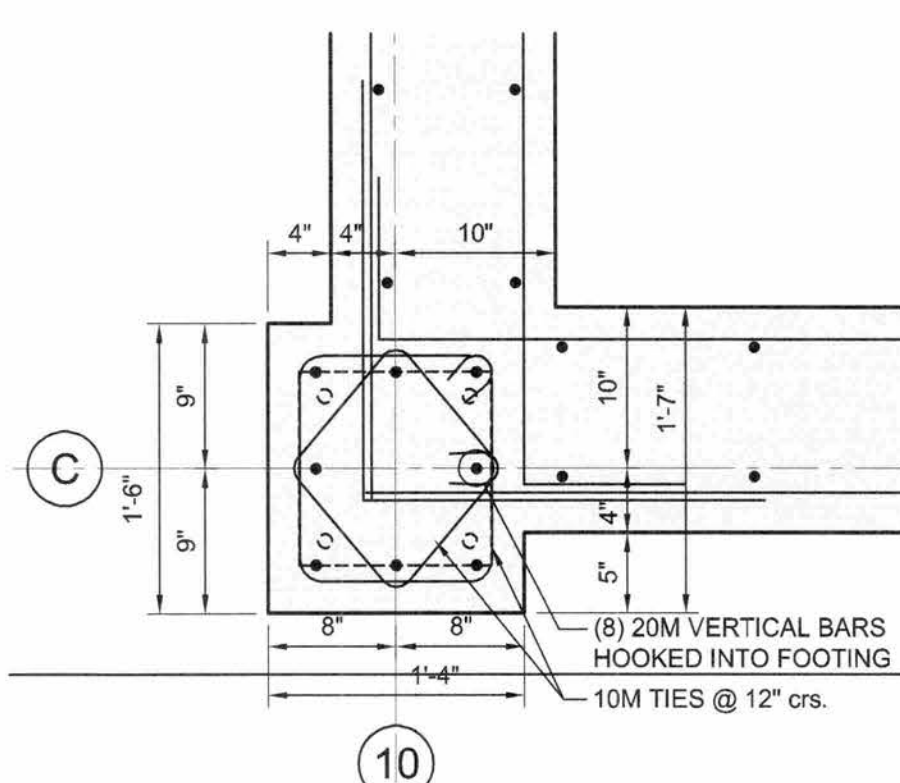
CONCRETE PIER - P14B
SCALE: 1" = 1'-0"



CONCRETE PIER - P15
SCALE: 1" = 1'-0"



CONCRETE PIER - P16
SCALE: 1" = 1'-0"



CONCRETE PIER - P17
SCALE: 1" = 1'-0"

1	FOR TENDER	01/06/18
No.	ISSUE / REVISION	DD/MM/YY

This drawing is copyright protected and may not be reproduced or used for purposes other than execution of the described work without the express written consent of J.L. Richards & Associates Limited.

VERIFY SHEET SIZE AND SCALES. BAR TO THE RIGHT IS 1" IF THIS IS A FULL SIZE DRAWING.

SCALE: AS NOTED

CLIENT:
 Conseil des écoles publiques de l'Est de l'Ontario

CONSULTANT:
 McIntosh Perry Consulting Engineers Ltd.

CONSULTANT:
 J.L. Richards ENGINEERS - ARCHITECTS - PLANNERS

CONSULTANT:
 PAGEAU MOREL
www.pageaumorel.com
Gatineau

PROFESSIONAL STAMP
 S. BERNARD 100205293 PROVINCE OF ONTARIO
 M. J. BURTT 10011392 PROVINCE OF ONTARIO

PROJECT:
MAISON DE LA FRANCOPHONIE D'OTTAWA
2720 RICHMOND ROAD, OTTAWA

DRAWING:
PIER DETAILS (SHEET 1)
DESIGN: SDB/VR
DRAWN: JPS
CHECKED: MJB
JLR# 27672-001
DRAWING #:
S30