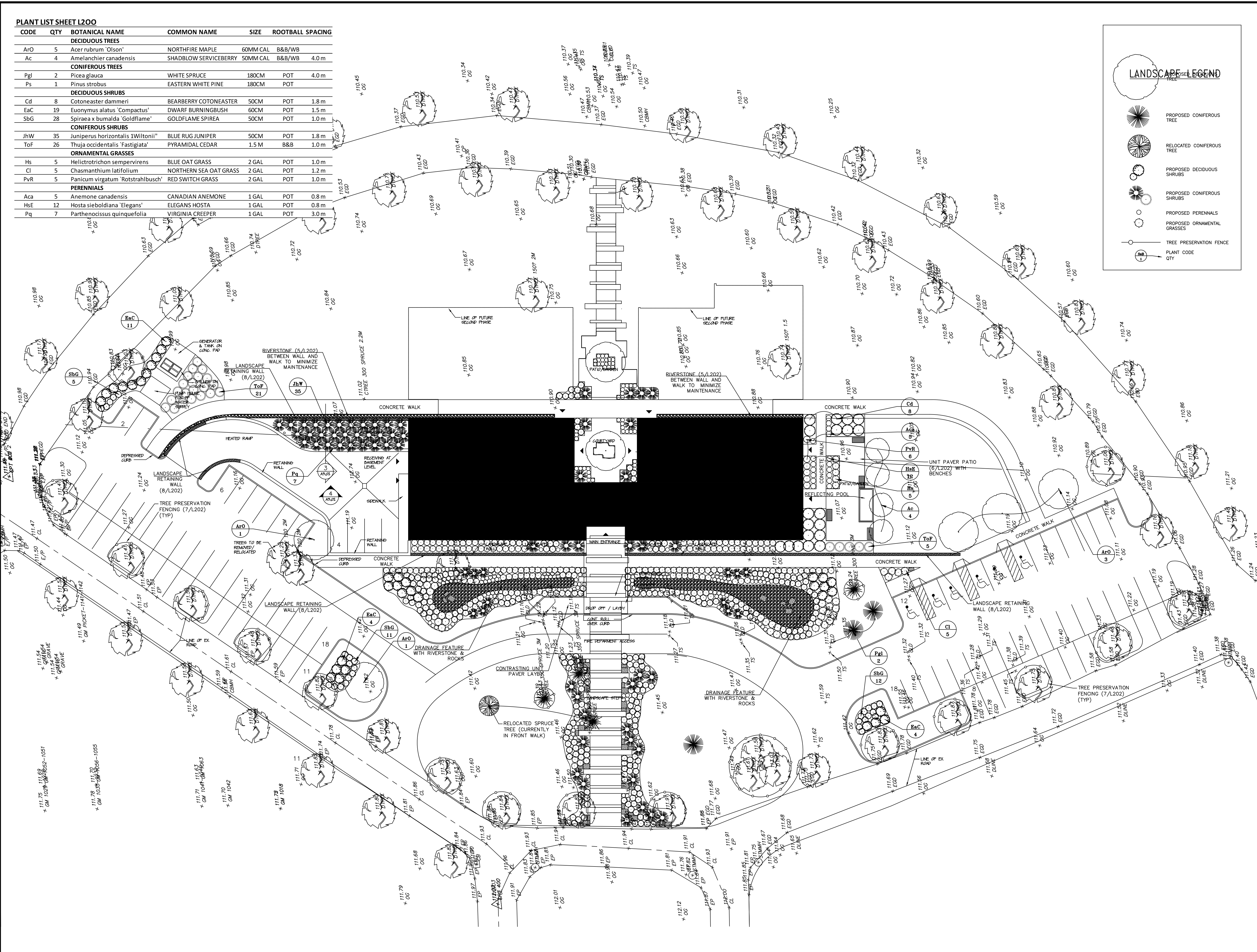
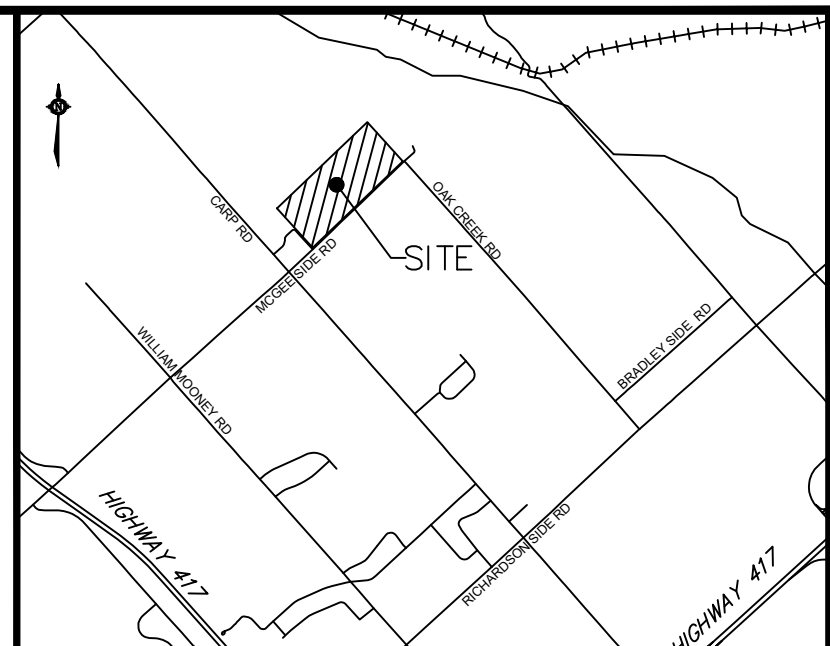
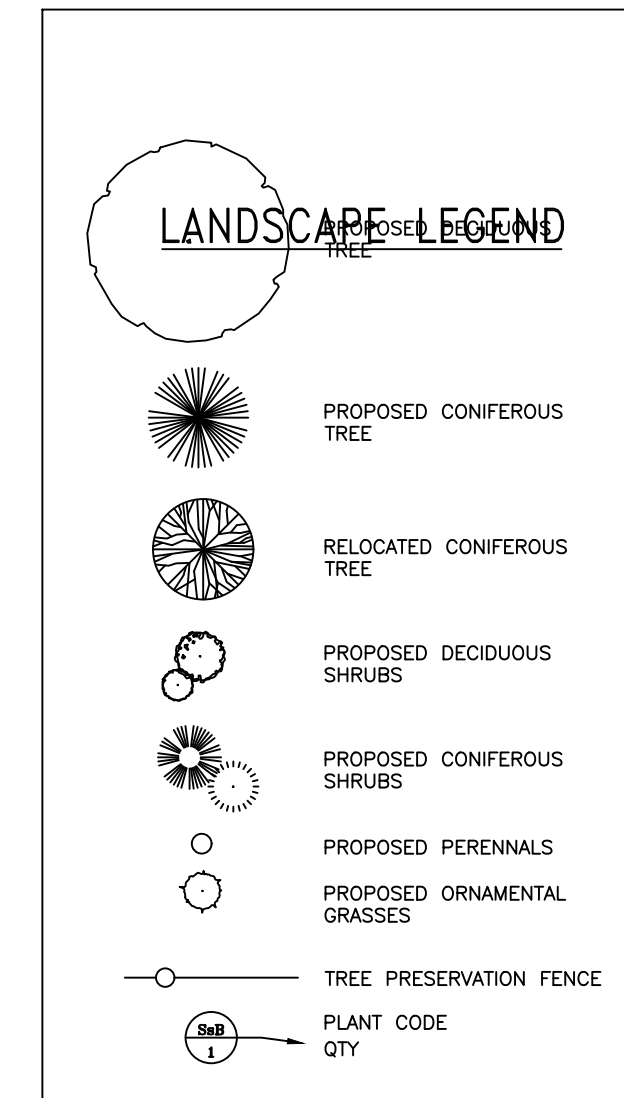


PLANT LIST SHEET L200

CODE	QTY	BOTANICAL NAME	COMMON NAME	SIZE	ROOTBALL SPACING
DECIDUOUS TREES					
Ao	5	Acer rubrum 'Olson'	NORTHFIRE MAPLE	60MM CAL	B&B/WB
Ac	4	Amelanchier canadensis	SHADBLow SERVICEBERRY	50MM CAL	B&B/WB 4.0m
CONIFEROUS TREES					
Pgl	2	Picea glauca	WHITE SPRUCE	180CM	POT 4.0m
Ps	1	Pinus strobus	EASTERN WHITE PINE	180CM	POT
DECIDUOUS SHRUBS					
Cd	8	Cotoneaster dammeri	BEARBERRY COTONEASTER	50CM	POT 1.8m
EaC	19	Euonymus alatus 'Compactus'	DWARF BURNINGBUSH	60CM	POT 1.5m
SbG	28	Spiraea x bumalda 'Goldflame'	GOLDFLAME SPIREA	50CM	POT 1.0m
CONIFEROUS SHRUBS					
JhW	35	Juniperus horizontalis 'Wiltonii'	BLUE RUG JUNIPER	50CM	POT 1.8m
ToF	26	Thuja occidentalis 'Fastigiata'	PYRAMIDAL CEDAR	1.5M	B&B 1.0m
ORNAMENTAL GRASSES					
Hs	5	Helictotrichon sempervirens	BLUE OAT GRASS	2 GAL	POT 1.0m
Cl	5	Chasmanthium latifolium	NORTHERN SEA OAT GRASS	2 GAL	POT 1.2m
PvR	5	Panicum virgatum 'Rotstrahlbusch'	RED SWITCH GRASS	2 GAL	POT 1.0m
PERENNIALS					
Aca	5	Anemone canadensis	CANADIAN ANEMONE	1 GAL	POT 0.8m
HsE	12	Hosta sieboldiana 'Elegans'	ELEGANS HOSTA	1 GAL	POT 0.8m
Pq	7	Parthenocissus quinquefolia	VIRGINIA CREEPER	1 GAL	POT 3.0m



No.	Date	Description
1	24 AUG 18	ISSUED FOR PRICING

Revisions:

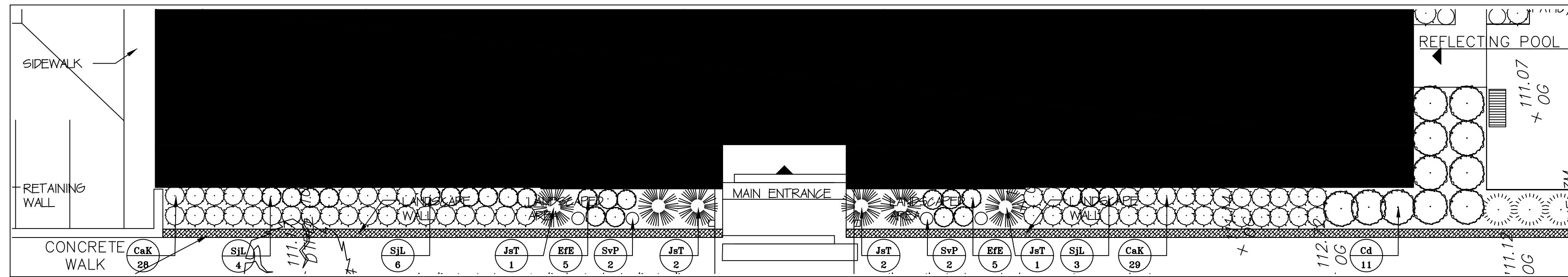
CATHERINE H. KIRK
Landscape Architect
1379 CONCESSION RD, FORMOSA, ONT. N0G 1W0
TEL: (519) 623-9324

Pinecrest Remembrance Services

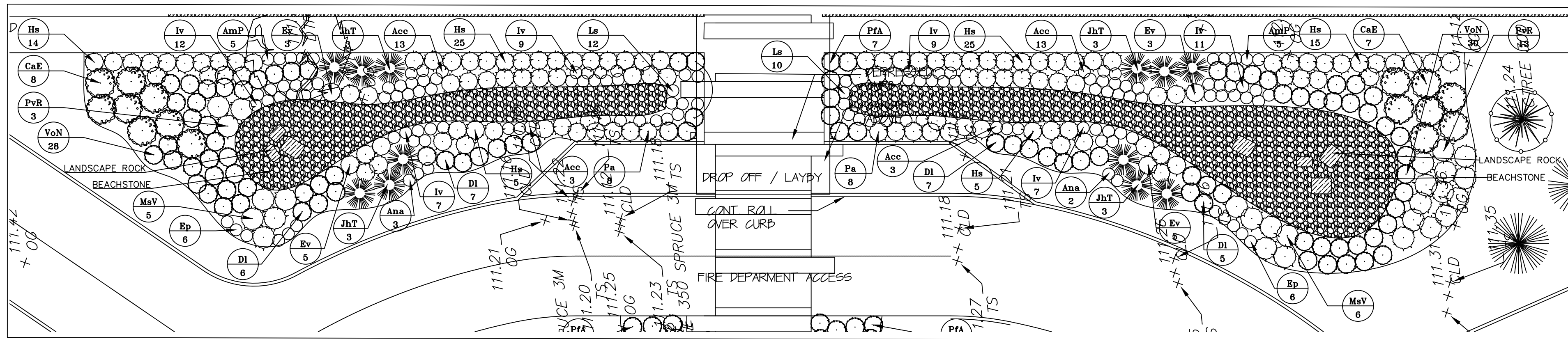
HIGHLAND PARK CEMETERY
2037 MCGEE SIDE ROAD
OTTAWA, ONTARIO

OVERALL LANDSCAPE PLAN

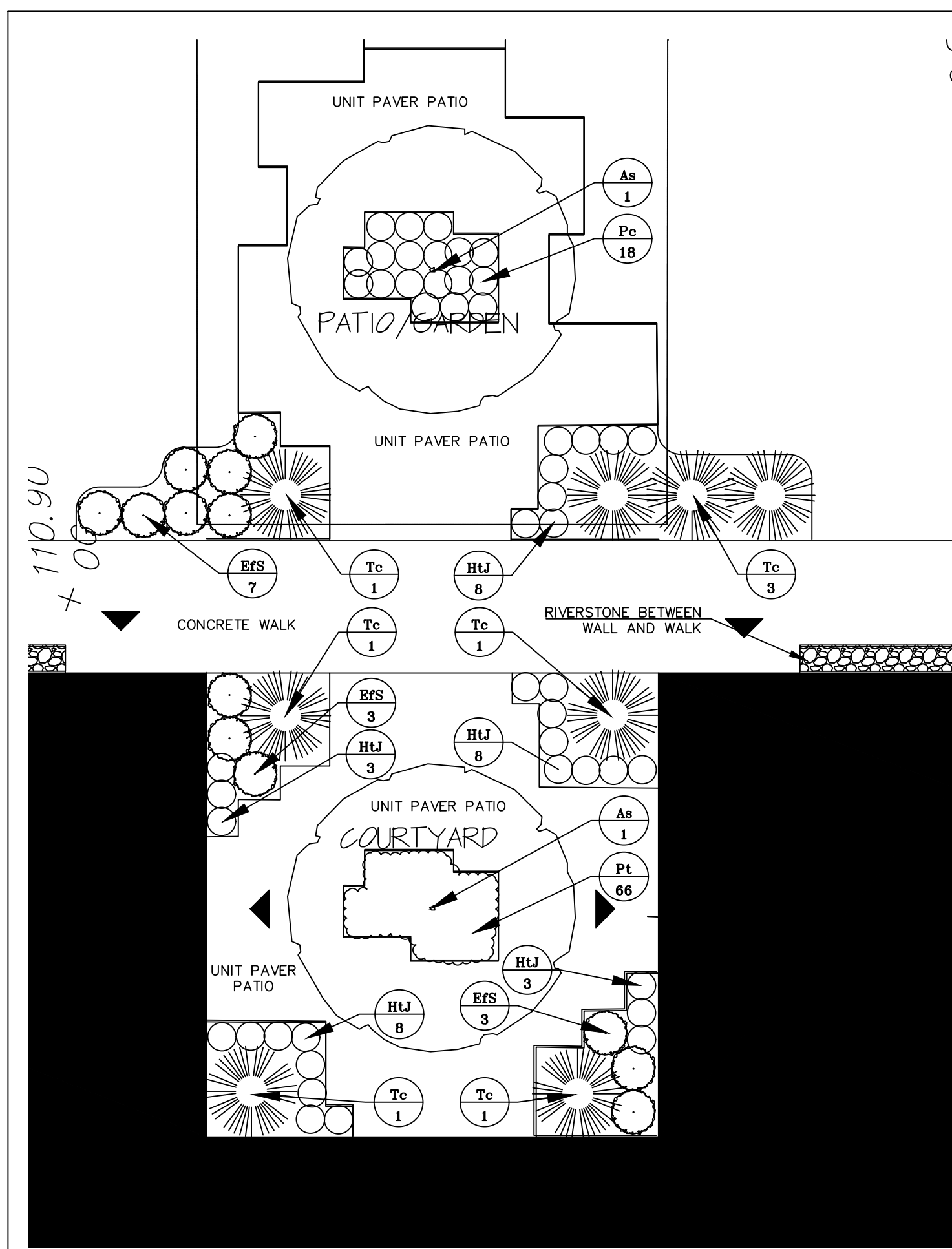
Scale: 1:250
Date: 13 MARCH 2018
Project No.: 201721
Drawing Number: **L200**



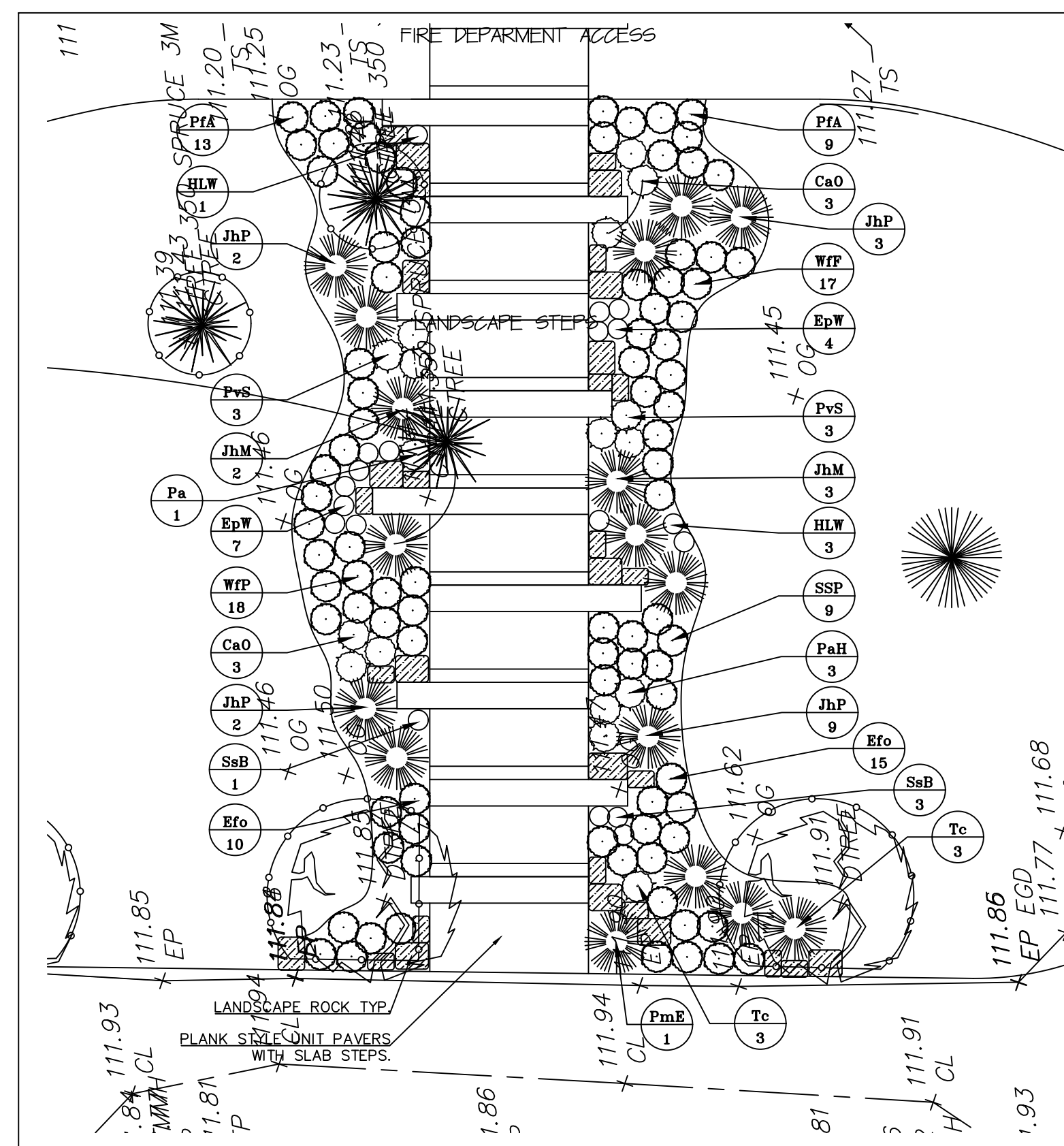
1 SOUTH SIDE BUILDING LANDSCAPE PLAN
L201 SCALE: 1:150



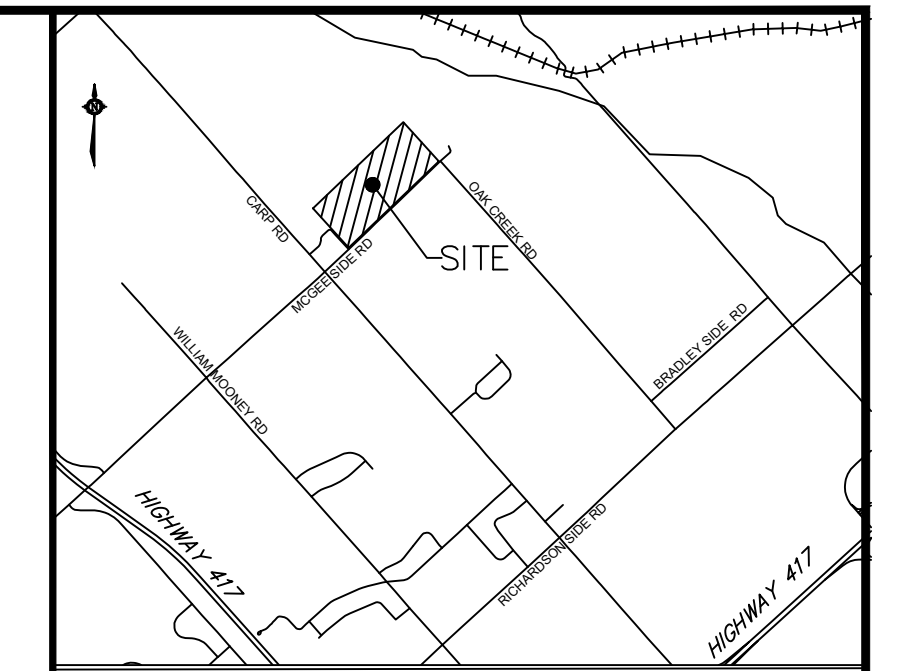
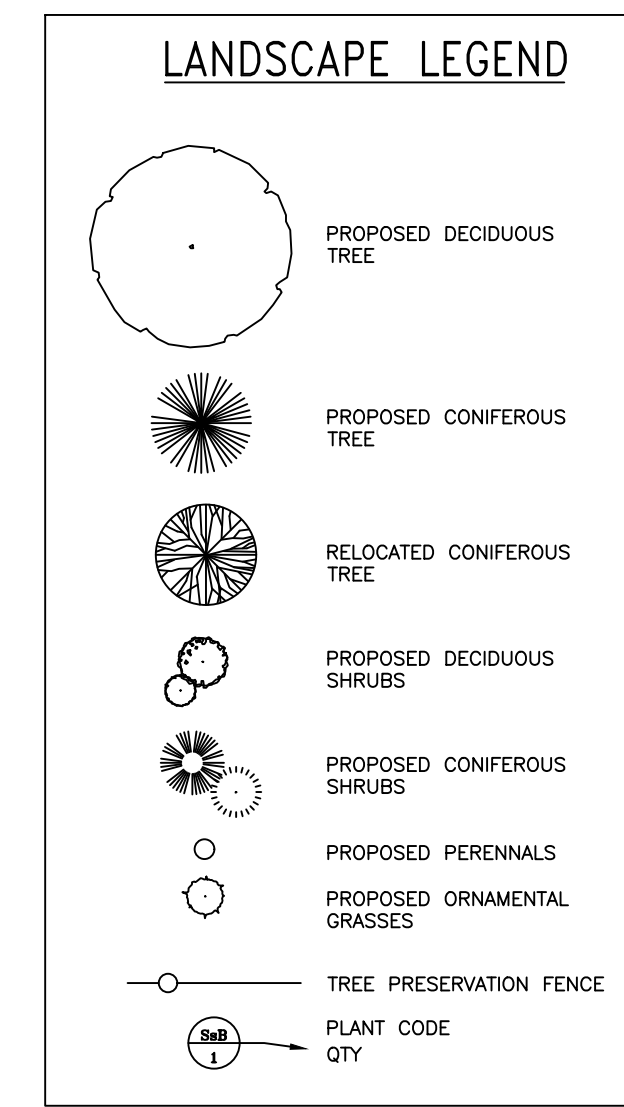
2 WATER/DRAINAGE FEATURES LANDSCAPE PLAN
L201 SCALE: 1:150



3 COURTYARD LANDSCAPE PLAN
L201 SCALE: 1:100



4 FRONT CENTRAL WALK LANDSCAPE PLAN
L201 SCALE: 1:150



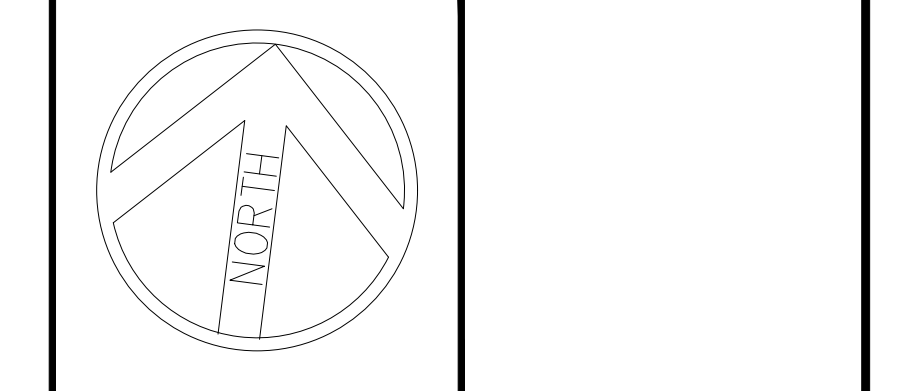
KEY PLAN Scale: n.t.s.

PLANT LIST SHEET L201

CODE	QTY	BOTANICAL NAME	COMMON NAME	SIZE	ROOTBALL	SPACING
DECIDUOUS TREES						
As	2	Acer saccharum	SUGAR MAPLE	80MM CAL	B&B/WB	
DECIDUOUS SHRUBS						
CaE	15	Cornus alba 'Elegantissima'	SILVEREDGE DOGWOOD	60CM	POT	1.5 m
Cd	11	Cotoneaster dammeri	BEARBERRY COTONEASTER	50CM	POT	1.8 m
DI	25	Diervilla lonicera	DWARF BUSH HONEYSUCKLE	60CM	POT	1.0 m
EFE	10	Euonymus fortunei 'Emerald Gaiety'	EMERALD GAIIETY EUONYMUS	50 CM	POT	1.0 m
Efo	25	Euonymus fortunei 'Sarcocoe'	SARCOXIE EUONYMUS	50 CM	POT	1.0 m
EFS	13	Euonymus fortunei 'Sunspot'	SUNSPOT EUONYMUS	50 CM	POT	1.0 m
Pc	18	Paxistima canbyi	CANBY PAXISTIMA	1 GAL	POT	0.6 m
PFA	34	Potentilla fruticosa 'Abbotswood'	ABBOTSWOOD CINQUEFOIL	50CM	POT	1.0 m
SIL	13	Spiraea japonica 'Little princess'	LITTLE PRINCESS SPIREA	50CM	POT	1.0 m
SSP	9	Symphoricarpos 'Scarlett Pearl'	SCARLETT PEARL SNOWBERRY	60CM	POT	1.0 m
VoN	58	Viburnum opulus 'Nanum'	HEDGE VIBURNUM	50CM	POT	1.0 m
WFF	35	Weigela florida 'Foliis Purpureis'	PURPLE WEIGELA	50CM	POT	1.0 m
CONIFEROUS SHRUBS						
JhM	5	Juniperus horizontalis 'Monbar'	ICEE BLUE JUNIPER	50CM	POT	1.8 m
JhP	8	Juniperus horizontalis 'Plumosa Compacta'	COMPACT ANDORRA JUNIPER	50CM	POT	1.8 m
JhT	12	Juniperus horizontalis 'Turquoise Spreader'	TURQUOISE JUNIPER	50CM	POT	1.5 m
JhT	6	Juniperus sabinna 'Tamariscifolia New Blue'	NEW BLUE TAMARISK JUNIPER	50CM	POT	1.8 m
PmE	1	Picea mariana 'Ericoides'	BLUE NEST SPRUCE	50CM	POT	1.8 m
Tc	11	Taxus canadensis	CANADIAN YEWS	60CM	POT	1.8 m
ORNAMENTAL GRASSES						
CaO	7	Calamagrostis arundinacea 'Overdam'	VARIEGATED REED GRASS	2 GAL	POT	0.9 m
CaK	57	Calamagrostis x acutiflora 'Farl Foerster'	FEATHER REED GRASS	2 GAL	POT	0.9 m
Ev	16	Elymus virginicus	VIRGINIA WILD RYE	2 GAL	POT	0.9 m
Hs	89	Helictotrichon sempervirens	BLUE OAT GRASS	2 GAL	POT	1.0 m
MsV	11	Miscanthus sinensis 'Variegatus'	VARIEGATED SILVER GRASS	2 GAL	POT	1.2 m
PvR	16	Panicum virgatum 'Rotstrahlbusch'	RED SWITCH GRASS	2 GAL	POT	1.2 m
PvS	6	Panicum virgatum 'Shenandoah'	SHENANDOAH SWITCH GRASS	2 GAL	POT	1.2 m
Pa	17	Pennisetum alopecuroides	CHINESE FOUNTAIN GRASS	2 GAL	POT	1.2 m
PaH	3	Pennisetum alopecuroides 'Hamlen'	DWARF FOUNTAIN GRASS	2 GAL	POT	1.0 m
PERENNIALS						
AmP	10	Achillea millefolium 'Paprika'	RED YARROW	1 GAL	POT	0.6 m
Acc	32	Acorus calamus	SWEET FLAG	1 GAL	POT	0.6 m
Ana	5	Aster novae-angliae	NEW ENGLAND ASTER	1 GAL	POT	0.6 m
Ep	11	Echinacea purpurea	PURPLE CONEFLOWER	1 GAL	POT	0.6 m
EpW	11	Echinacea purpurea 'White Swan'	WHITE SWAN CONEFLOWER	1 GAL	POT	0.6 m
HLW	4	Hemerocallis 'Little Winecup'	LITTLE WINECUP DAYLILY	1 GAL	POT	0.6 m
HU	27	Hosta tardiana 'June'	JUNE HOSTA	1 GAL	POT	0.6 m
Iv	55	Iris versicolor	BLUE FLAG IRIS	1 GAL	POT	0.6 m
Ls	22	Liatis spicata	BLAZING STAR	1 GAL	POT	0.6 m
Pt	66	Pachysandra terminalis	SPURGE	BR	BR	0.6 m
SvP	4	Salvia verticillata 'Purple Rain'	PURPLE RAIN SAGE	1 GAL	POT	0.6 m
SsB	4	Sedum spectabile 'Brilliant'	BRILLIANT STONECROP	1 GAL	POT	0.6 m

1 24 AUG 18 ISSUED FOR PRICING
No. Date Description

Revisions:



CATHERINE H. KIRK
Landscape Architect
1379 CONCESSION 10, FORMOSA, ONT. N0G 1W0
TEL: (519) 623-9324

**Pinecrest
Remembrance
Services**

HIGHLAND PARK
CEMETERY
2037 MCGEE SIDE ROAD
OTTAWA, ONTARIO

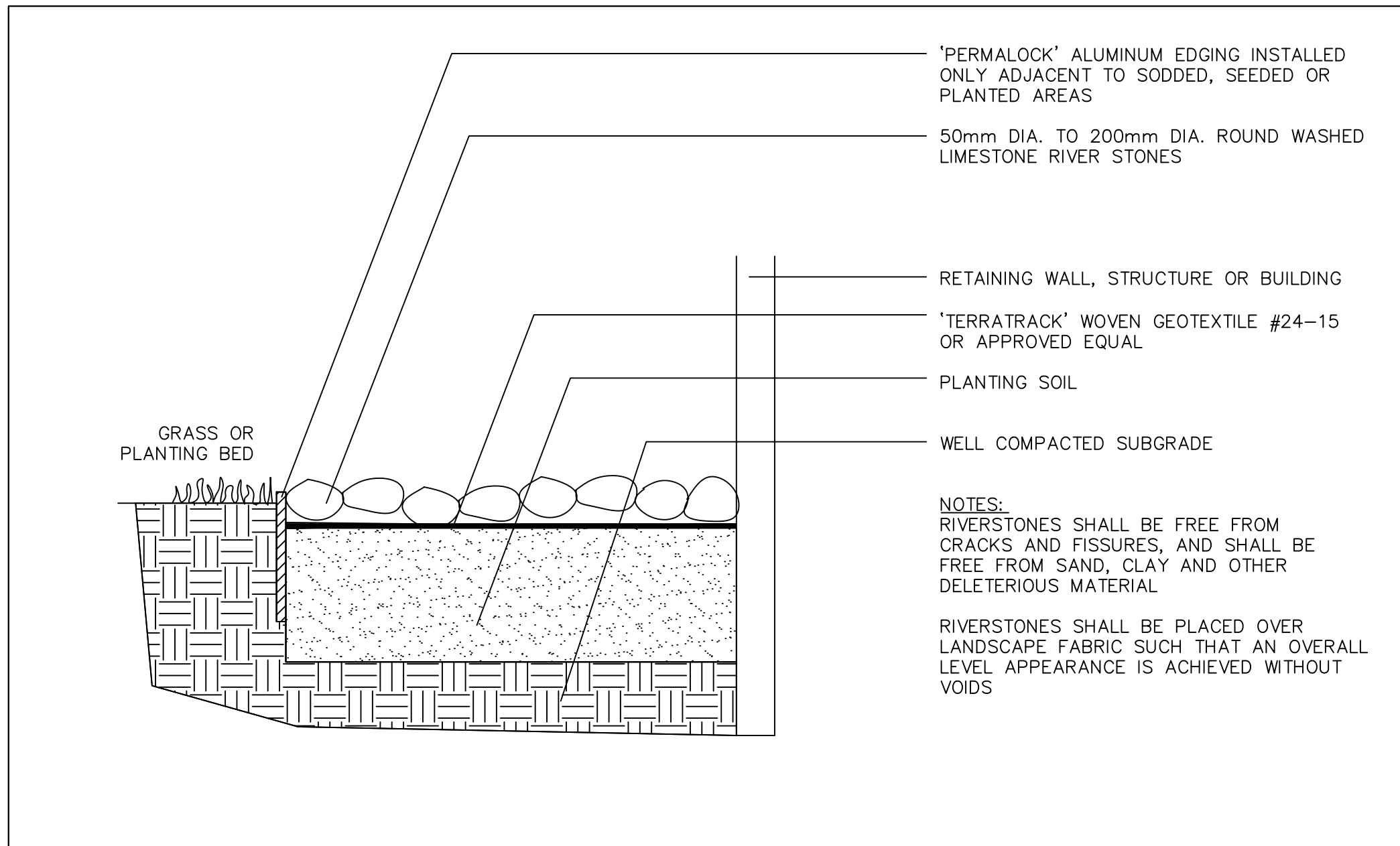
LANDSCAPE
ENLARGEMENT

Scale: AS NOTED

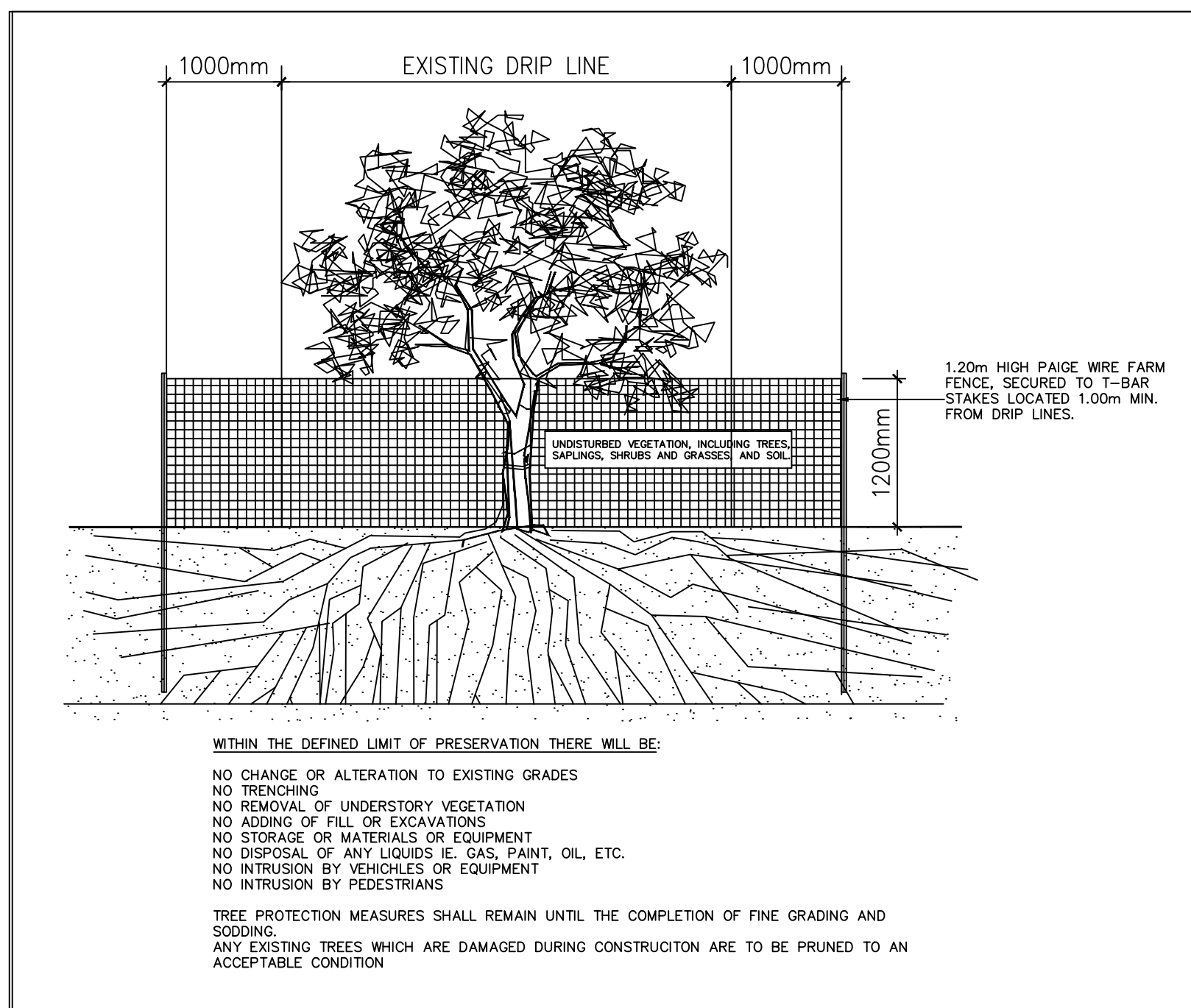
Date: 13 MARCH 2018

Project No.: 201721

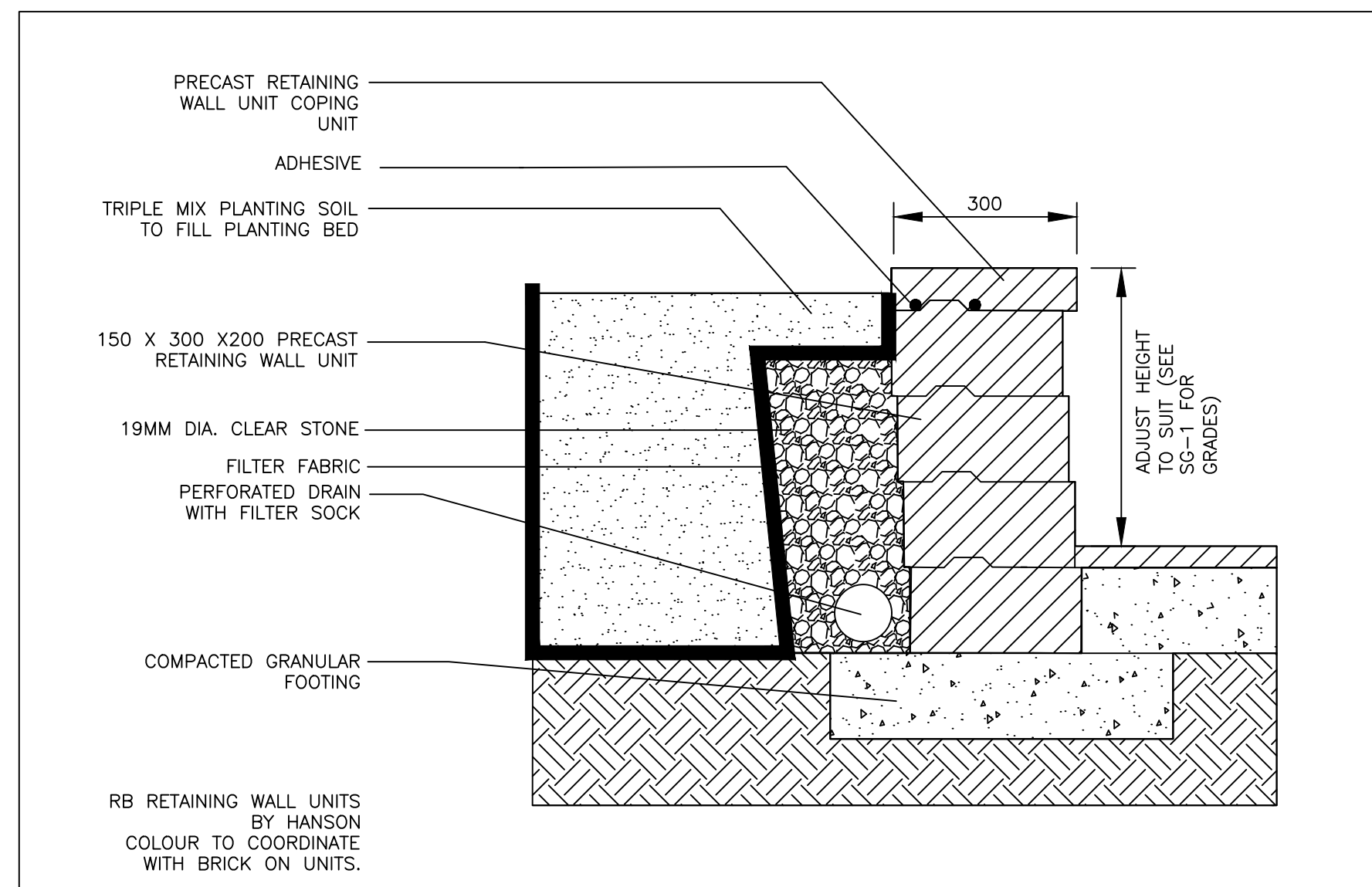
Drawing Number: L201



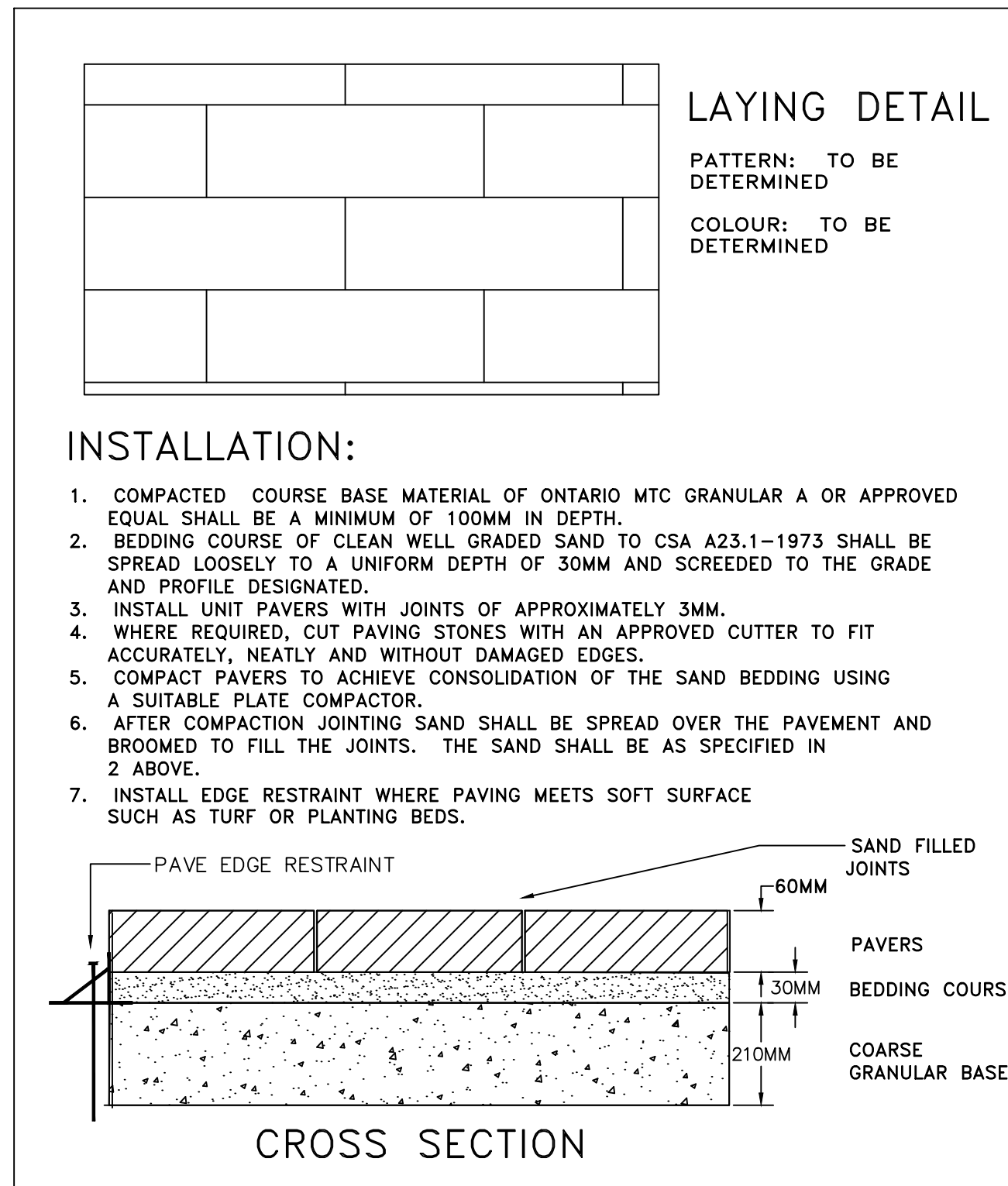
5 RIVERSTONE DETAIL
L202 SCALE: NTS



7 TREE PRESERVATION FENCING DETAIL
L202 SCALE: NTS



8 LANDSCAPE RETAINING WALL DETAIL
L202 SCALE: 1:10



6 UNIT PAVER DETAIL
L202 SCALE: NTS

LANDSCAPE NOTES
GENERAL NOTES:

- CONTRACTOR TO VERIFY ALL DIMENSIONS AND CONDITIONS ON SITE PRIOR TO THE COMMENCEMENT OF WORK.
- GRADES WITHIN THE SITE AND AT PROPERTY LINE SHALL NOT EXCEED A 3:1 SLOPE.
- THE CONTRACTOR IS RESPONSIBLE FOR HAVING ALL UNDERGROUND SERVICES AND UTILITIES STAKED OUT PRIOR TO PLANTING.
- PROTECTIVE FENCING IS TO BE ERECTED AROUND ALL EXISTING TREES TO BE PRESERVED WITHIN THE CONSTRUCTION AREA TO 1.0M BEYOND THE "DRIPLINE" AS NOTED ON THE OVERALL LANDSCAPE PLAN.
- ALL PROTECTIVE FENCING IS TO REMAIN IN PLACE AND IN GOOD REPAIR THROUGHOUT CONSTRUCTION.
- NO HEAVY EQUIPMENT IS TO BE OPERATED WITHIN THE PROTECTED AREA OF TREES TO BE SAVED.
- NO EXCAVATION SHOULD BE CARRIED OUT WITHIN THE DRIPLINES OF THE TREES TO BE SAVED.
- FLOODING WITHIN THE PROTECTED AREA IS TO BE AVOIDED.
- NO MATERIALS OR EQUIPMENT IS TO BE STORED WITHIN THE PROTECTIVE FENCING.
- NO CONTAMINANTS ARE TO BE DUMPED WITHIN THE PROTECTIVE FENCING.
- ANY LIMBS THAT ARE TO BE CUT OR REMOVED TO ACCOMMODATE CONSTRUCTION WORK WILL BE REMOVED CAREFULLY WITH PROPER PRUNING EQUIPMENT.
- IF ANY ROOT SYSTEMS OF PROTECTED TREES ARE EXPOSED OR DAMAGED BY CONSTRUCTION WORK, THEY SHALL BE TRIMMED NEATLY AND THEN BACKFILLED WITH TOPSOIL TO PREVENT DESICCATION.
- IF NECESSARY, THE TREES WILL BE GIVEN AN OVERALL PRUNING TO RESTORE THE BALANCE BETWEEN ROOTS AND CROWN OR TO RESTORE THE APPEARANCE OF THE TREE.
- ANY PRESERVED TREES THAT HAVE DIED OR HAVE BEEN DAMAGED BEYOND REPAIR, SHALL BE REPLACED BY THE CONTRACTOR AT HIS OWN EXPENSE WITH TREES OF A SIZE AND SPECIES AS APPROVED BY THE OWNER'S REPRESENTATIVE.

TOPSOIL & FINISH GRADING:

- ALL SOIL SHALL BE TESTED BY A ASTM/CSA ACCREDITED SOIL TESTING LABORATORY AT THE SOURCE BEFORE DELIVERY TO THE SITE.
- THE CONTRACTOR IS RESPONSIBLE FOR AMENDMENTS AS RECOMMENDED BY THE SOIL TESTING LABORATORY.
- TOPSOIL IS TO BE FREE OF SUBSOIL, STONES 50MM IN DIAMETER OF LARGER, ROOTS, WEEDS, DEBRIS AND TOXIC MATERIAL.
- CONTRACTOR TO VERIFY THAT GRADES ARE CORRECT PRIOR TO PLACEMENT OF TOPSOIL.
- CULTIVATE THE ENTIRE AREA TO RECEIVE TOPSOIL TO A MINIMUM DEPTH OF 100mm.
- GRADE SOIL, ELIMINATING UNEVEN AREAS AND LOW SPOTS TO ENSURE POSITIVE DRAINAGE.
- SPREAD TOPSOIL TO THE FOLLOWING MINIMUM DEPTHS AFTER SETTLEMENT:
150mm FOR SODDED AND SEEDED AREAS
450mm FOR SHRUB BEDS
900mm FOR TREE PLANTING AREAS
- TOPSOIL FOR SODDED AREAS AND PLANTING BEDS TO CONSIST OF:
50-60% SAND
6-10% CLAY
20-40% SILT
2-5% ORGANIC MATTER
PH OF 7.5 OR LESS
- THE DEPTH OF SUBSOIL WILL BE INSPECTED PRIOR TO SOD OR SEED APPLICATION.

PLANTING:

- THE QUANTITIES INDICATED ON THE PLAN SUPERSEDE THE TOTALS ON THE PLANT LIST.
- EXCAVATE AND PROVIDE PLANTING SOILS TO DEPTHS INDICATED BY PLANTING DETAILS.
- ALL PLANT MATERIAL TO CONFORM TO THE CANADIAN NURSERY TRADES ASSOCIATION METRIC SPECIFICATIONS AND STANDARDS.
- THE CONTRACTOR IS TO ENSURE THAT NO OPEN TREE PITS ARE LEFT UNATTENDED ON SITE.
- ALL EVERGREENS ARE TO BE WRAPPED THE FIRST WINTER AT THE EXPENSE OF THE CONTRACTOR.
- ALL TREES & SHRUBS ARE TO BE PLANTED AND STAKED IN ACCORDANCE WITH PLANTING DETAILS.
- OBTAIN APPROVAL FOR SUBSTITUTIONS FROM THE CONSULTANT.
- ALL TREE STAKES ARE TO BE REMOVED AT THE END OF THE WARRANTY PERIOD.
- ALL SHRUBS ARE TO BE INSTALLED IN CONTINUOUS PLANTING BEDS.

SEEDING:

- LAWN AREAS ARE TO BE SEEDDED WITH A LOW MAINTENANCE SEED MIX CONSISTING OF:
40% AUDUBON CREEPING RED FESCUE
20% SOUTHPORT CHEWING FESCUE
20% CASCADIA CHEWING FESCUE
20% FENWAY CREEPING RED FESCUE
HYDROSEED AT AT RATE OF 185kg PER HECTARE
- EROSION CONTROL FABRICS TO BE INSTALLED ON ALL SLOPES GREATER THAN OR EQUAL TO 4:1.

SODDING:

- SOD SHALL BE NO. 1 GRADE NURSERY GROWN CONFORMING TO THE CANADIAN NURSERY TRADES ASSOCIATION SPECIFICATIONS AND STANDARDS.
- ALL SOD IS TO BE PLACED OVER A MINIMUM OF 150mm OF TOPSOIL.
- BOULEVARD IS TO BE RESTORED WITH FINE GRADING AND SODDING BY CONTRACTOR.
- THE BOTTOM OF ALL DRAINAGE SWALES ARE TO BE SODDED A MIN. OF 1.0m WIDE.
- WHERE THERE IS ANY DELAY IN INSTALLATION, THE SOD SHALL BE KEPT MOIST, COOL AND PROTECTED AGAINST ADVERSE WEATHER CONDITIONS AT ALL TIMES UNTIL INSTALLATION.

MAINTENANCE:

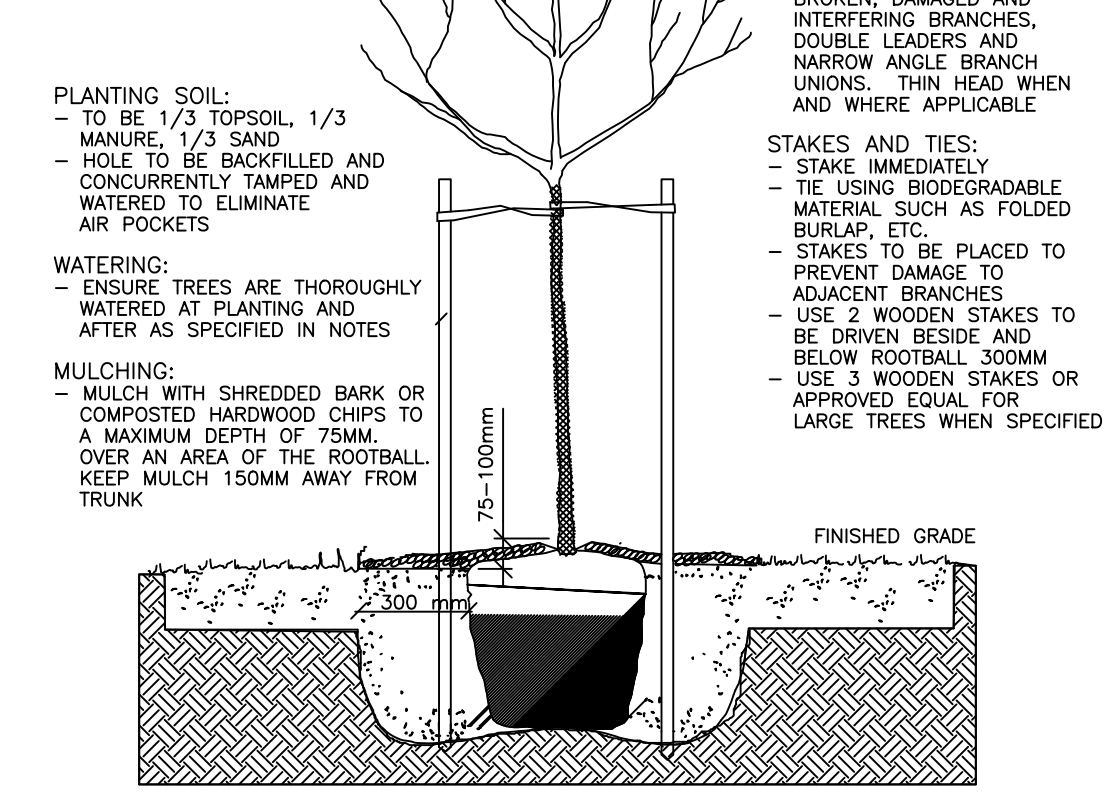
- WATER PLANT MATERIAL 3 TIMES A WEEK FOR FIRST 4 WEEKS AND THEN SUFFICIENTLY THEREAFTER TO MAINTAIN OPTIMUM GROWING CONDITIONS UNTIL FINAL ACCEPTANCE (ONE YEAR FROM INSTALLATION).
- KEEP SOIL WITHIN PLANTING SAUCER AND WITHIN PLANTING BEDS FREE FROM WEEDS UNTIL FINAL ACCEPTANCE.
- WATER SOD SUFFICIENTLY TO MAINTAIN SOIL UNDER SOD CONTINUALLY MOIST TO DEPTH OF 75mm (MIN OF THREE TIMES PER WEEK FOR FIRST 4 WEEKS).
- FERTILIZE SODDED AREAS ONE MONTH AFTER SODDING WITH 2:1:1 RATIO FERTILIZER SPREAD EVENLY AT RATE OF 1kg OF NITROGEN/100m² AND WATER IN WELL.
- MAINTAIN SODDED AND SEEDDED AREAS WEED FREE UNTIL FINAL ACCEPTANCE.

WARRANTY:

- ALL MATERIALS AND WORKMANSHIP TO BE GUARANTEED FOR ONE FULL YEAR FROM SUBSTANTIAL COMPLETION OF WORK.
- THE CONTRACTOR IS TO REMEDY ANY DEFECTS AND PAY FOR ANY DAMAGE TO OTHER WORK RESULTING THEREFROM, WITHIN A PERIOD OF ONE YEAR. ALL PLANT MATERIAL USED AS REPLACEMENTS SHALL BE OF THE SAME QUALITY AND REQUIREMENTS PRESCRIBED FOR ORIGINAL MATERIALS.

PLANTING NOTES

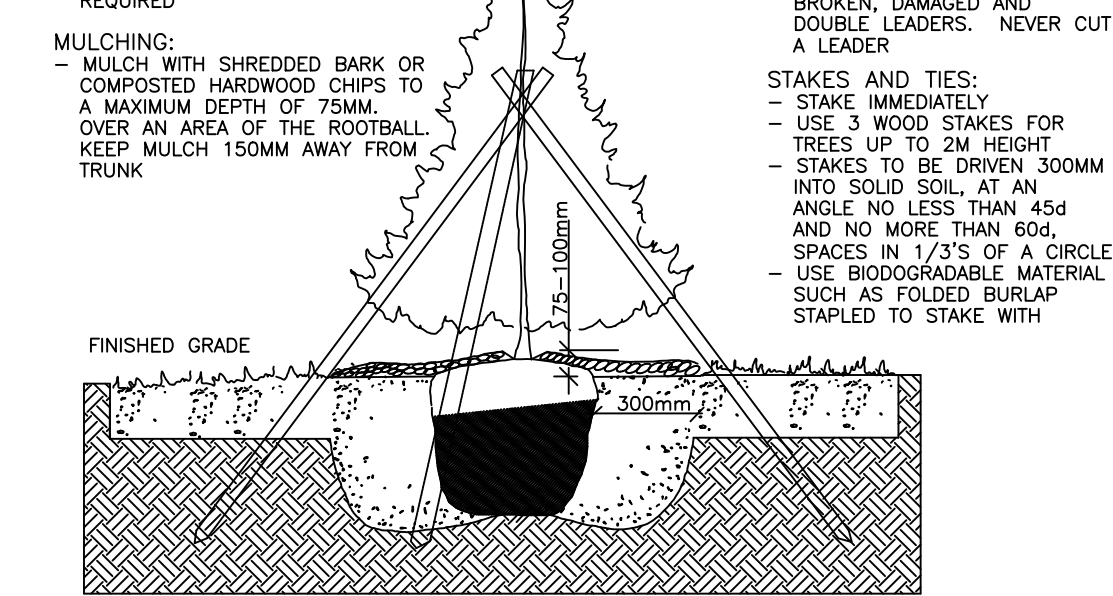
- CONTRACTOR IS RESPONSIBLE FOR OBTAINING WRITTEN CONFIRMATION OF UTILITY LOCATES PRIOR TO COMMENCING DIGGING
- TRUNK PROTECTION:
- TRUNK WRAPPING IN PLACE PRIOR TO PLANTING TO BE TOTALLY REMOVED FOR TRUNK INSPECTION
- WHEN REQUIRED USE ONLY APPROVED TREE WRAP MATERIAL AND INSTALL FROM THE GROUND UP TO ABOVE THE LOWEST BRANCHES
- WRAP WITH PLASTIC RODENT GUARDS TO FIRST BRANCHES
- PLANTING DEPTH:
- IN HEAVY CLAY OR POORLY DRAINED SOIL ALL WOODY PLANTS TO BE PLACED SO THAT THE ROOT COLLAR IS POSITIONED 75-100MM HIGHER THAN SURROUNDING GRADE
- CROWN PRUNING:
- PRUNE AT PLANTING TO CAREFULLY REMOVE DEAD, BROKEN, DAMAGED AND INTERFERING BRANCHES, DOUBLE LEADERS AND NARROW ANGLE BRANCH UNIONS, THIN HEAD WEENS AND WHERE APPLICABLE
- STAKES AND TIES:
- STAKE IMMEDIATELY
- USE BIODegradABLE MATERIAL SUCH AS FOLDED BURLAP, ETC.
- STAKES TO BE PLACED TO PREVENT DAMAGE TO ADJACENT BRANCHES
- USE 2 WOODEN STAKES TO BE DRIVEN BESIDE AND BELOW ROOTBALL 300MM
- USE 3 WOODEN STAKES OR APPROVED EQUAL FOR LARGE TREES WHEN SPECIFIED



DECIDUOUS TREE PLANTING DETAIL N.T.S.

PLANTING NOTES

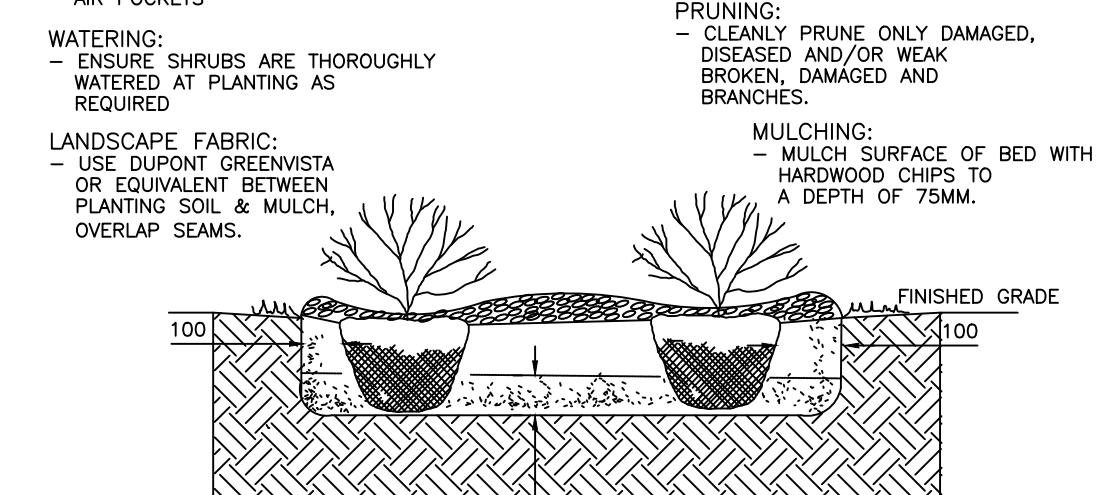
- CONTRACTOR IS RESPONSIBLE FOR OBTAINING WRITTEN CONFIRMATION OF UTILITY LOCATES PRIOR TO COMMENCING DIGGING
- PLANTING SOIL:
- IN HEAVY CLAY OR POORLY DRAINED SOIL ALL WOODY PLANTS TO BE PLACED SO THAT THE ROOT COLLAR IS POSITIONED 75-100MM HIGHER THAN SURROUNDING GRADE
- WATERING:
- ENSURE TREES ARE THOROUGHLY WATERED AT PLANTING AS REQUIRED
- MULCHING:
- MULCH WITH SHREDDED BARK OR COMPOSTED HARDWOOD CHIPS TO A MAXIMUM DEPTH OF 75MM OVER AN AREA OF THE ROOTBALL KEEP MULCH 150MM AWAY FROM TRUNK
- PLANTING AREA:
- ACTUAL HOLE TO BE 300MM WIDER AROUND THE PERIMETER OF THE ROOTBALL
- SOIL PREPARATION AREA TO BE SIX ROOTBALL DIAMETER
- SCARIFY SOIL PREPARATION AREA TO A DEPTH OF 300MM FOR AERATION
- ROOTBALL: BURLAP, TWINE:
- CUT AND REMOVE ALL WIRE, ROPE, BURLAP AND TWINE FROM AROUND TRUNK AND THE TOP 1/3 OF ROOTBALL



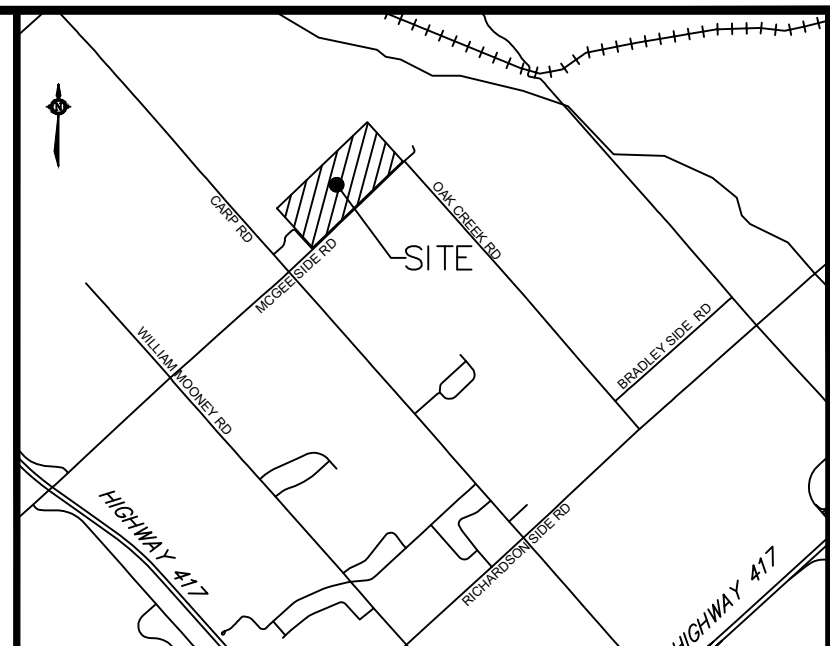
CONIFEROUS TREE PLANTING DETAIL N.T.S.

PLANTING NOTES

- CONTRACTOR IS RESPONSIBLE FOR OBTAINING WRITTEN CONFIRMATION OF UTILITY LOCATES PRIOR TO COMMENCING DIGGING
- PLANTING SOIL:
- TO BE 1/3 TOPSOIL 1/3 MANURE, 1/3 SAND
- HOLE TO BE BACKFILLED AND CONCURRENTLY TAMPED AND WATERED TO ELIMINATE AIR POCKETS
- WATERING:
- ENSURE SHRUBS ARE THOROUGHLY WATERED AT PLANTING AS REQUIRED
- LANDSCAPE FABRIC:
- USE DUPONT GREENWISTA OR EQUIVALENT BETWEEN PLANTING SOIL & MULCH, OVERLAP SEAMS.
- PLANTING AREA:
- ACTUAL PLANTING HOLE TO BE 3 TIMES WIDER THAN THE PERIMETER OF THE ROOTBALL
- TO A DEPTH OF 150MM FOR AERATION
- EXCAVATE ENTIRE SHRUB BED AREA
- ROOTBALL: BURLAP, TWINE:
- REMOVE TOP 1/3 OF BURLAP OR CONTAINER (IF CONTAINER IS NON-ORGANIC, REMOVE COMPLETELY)
- CUT SEVERAL SLITS IN ORGANIC CONTAINER TO FACILITATE ROOT PENETRATION, REMOVE BOTTOM COMPLETELY.



SHRUB PLANTING BALLED & BURLAPPED & CONTAINER GROWN N.T.S.



KEY PLAN Scale: n.t.s.

No.	Date	Description
124	AUG 18	ISSUED FOR PRICING

Revisions:

CATHERINE H. KIRK
Landscape Architect
1379 CONCESSION 10, FORMOSA, ONT. N0G 1W0
TEL: (519) 623-9324

Pinecrest Remembrance Services

HIGHLAND PARK CEMETERY
2037 MCGEE SIDE ROAD
OTTAWA, ONTARIO

LANDSCAPE NOTES & DETAILS

Scale: AS NOTED
Date: 13 MARCH 2018
Project No.: 201721
Drawing Number: L202